



## Full wwPDB EM Validation Report ⓘ

Mar 9, 2026 – 10:01 PM UTC

PDB ID : 9KZ7 / pdb\_00009kz7  
EMDB ID : EMD-62653  
Title : The cryo-EM structure of porcine serum MGAM bound with Acarviosyl-maltotriose.  
Authors : Tagami, T.; Kawasaki, M.; Adachi, N.  
Deposited on : 2024-12-10  
Resolution : 2.77 Å(reported)  
Based on initial model : .

This is a Full wwPDB EM Validation Report for a publicly released PDB entry.

We welcome your comments at [validation@mail.wwpdb.org](mailto:validation@mail.wwpdb.org)

A user guide is available at

<https://www.wwpdb.org/validation/2017/EMValidationReportHelp>

with specific help available everywhere you see the ⓘ symbol.

The types of validation reports are described at

<http://www.wwpdb.org/validation/2017/FAQs#types>.

---

The following versions of software and data (see [references ⓘ](#)) were used in the production of this report:

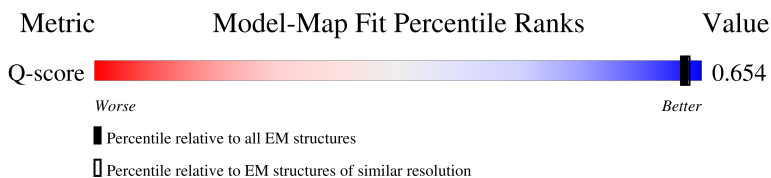
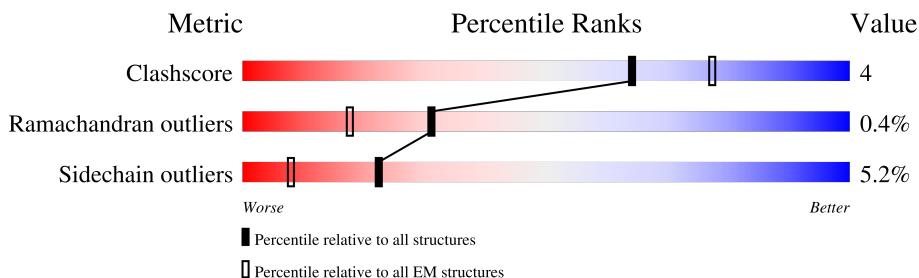
EMDB validation analysis : 0.0.1.dev132  
Mogul : 2022.3.0, CSD as543be (2022)  
MolProbity : 4-5-2 with Phenix2.0  
Percentile statistics : 20250101.v01 (using entries in the PDB archive January 1st 2025)  
EM percentile statistics : 202505.v01 (Using data in the EMDB archive up until May 2025)  
MapQ : 1.9.13  
Ideal geometry (proteins) : Engh & Huber (2001)  
Ideal geometry (DNA, RNA) : Parkinson et al. (1996)  
Validation Pipeline (wwPDB-VP) : 2.49

# 1 Overall quality at a glance i

The following experimental techniques were used to determine the structure:  
*ELECTRON MICROSCOPY*

The reported resolution of this entry is 2.77 Å.

Percentile scores (ranging between 0-100) for global validation metrics of the entry are shown in the following graphic. The table shows the number of entries on which the scores are based.



Metric	Whole archive (#Entries)	EM structures (#Entries)	Similar EM resolution (#Entries, resolution range(Å))
Clashscore	229148	23984	-
Ramachandran outliers	224038	23583	-
Sidechain outliers	223484	23102	-
Q-score	-	25397	10695 ( 2.27 - 3.27 )

The table below summarises the geometric issues observed across the polymeric chains and their fit to the map. The red, orange, yellow and green segments of the bar indicate the fraction of residues that contain outliers for  $\geq 3$ , 2, 1 and 0 types of geometric quality criteria respectively. A grey segment represents the fraction of residues that are not modelled. The numeric value for each fraction is indicated below the corresponding segment, with a dot representing fractions  $\leq 5\%$ . The upper red bar (where present) indicates the fraction of residues that have poor fit to the EM map (all-atom inclusion  $< 40\%$ ). The numeric value is given above the bar.

Mol	Chain	Length	Quality of chain
1	A	1795	<p>86% (Green), 12% (Yellow), 2% (Grey), 0% (Red)</p>
2	B	4	<p>25% (Red), 25% (Orange), 75% (Yellow)</p>
2	C	4	<p>50% (Red), 75% (Green), 25% (Yellow)</p>
3	D	2	<p>100% (Red), 50% (Orange), 50% (Yellow)</p>

Continued on next page...

*Continued from previous page...*

Mol	Chain	Length	Quality of chain
3	E	2	<p>100% 50% 50%</p>
3	F	2	<p>50% 100%</p>
3	H	2	<p>100%</p>
3	I	2	<p>50% 100%</p>
3	J	2	<p>50% 100%</p>
3	L	2	<p>100% 100%</p>
3	M	2	<p>100% 50% 50%</p>
4	G	3	<p>67% 100%</p>
4	K	3	<p>100% 33% 67%</p>

## 2 Entry composition [i](#)

There are 5 unique types of molecules in this entry. The entry contains 14659 atoms, of which 0 are hydrogens and 0 are deuteriums.

In the tables below, the AltConf column contains the number of residues with at least one atom in alternate conformation and the Trace column contains the number of residues modelled with at most 2 atoms.

- Molecule 1 is a protein called Maltase-glucoamylase.

Mol	Chain	Residues	Atoms					AltConf	Trace
			Total	C	N	O	S		
1	A	1771	14221	9104	2371	2688	58	2	0

- Molecule 2 is an oligosaccharide called 4,6-dideoxy-4-[[[(1S,4R,5S,6S)-4,5,6-trihydroxy-3-(hydroxymethyl)cyclohex-2-en-1-yl]amino}-alpha-D-glucopyranose-(1-4)-alpha-D-glucopyranose-(1-4)-alpha-D-glucopyranose-(1-4)-beta-D-glucopyranose.

Mol	Chain	Residues	Atoms				AltConf	Trace
			Total	C	N	O		
2	B	4	55	31	1	23	0	0
2	C	4	55	31	1	23	0	0

- Molecule 3 is an oligosaccharide called 2-acetamido-2-deoxy-beta-D-glucopyranose-(1-4)-2-acetamido-2-deoxy-beta-D-glucopyranose.



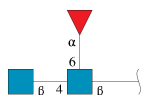
Mol	Chain	Residues	Atoms				AltConf	Trace
			Total	C	N	O		
3	D	2	28	16	2	10	0	0
3	E	2	28	16	2	10	0	0
3	F	2	28	16	2	10	0	0
3	H	2	28	16	2	10	0	0
3	I	2	28	16	2	10	0	0
3	J	2	28	16	2	10	0	0

*Continued on next page...*

Continued from previous page...

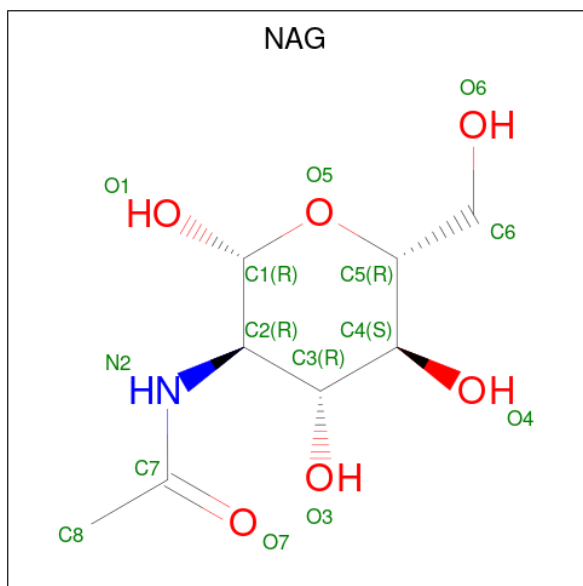
Mol	Chain	Residues	Atoms				AltConf	Trace
			Total	C	N	O		
3	L	2	Total 28	C 16	N 2	O 10	0	0
3	M	2	Total 28	C 16	N 2	O 10	0	0

- Molecule 4 is an oligosaccharide called 2-acetamido-2-deoxy-beta-D-glucopyranose-(1-4)-[alpha-L-fucopyranose-(1-6)]2-acetamido-2-deoxy-beta-D-glucopyranose.



Mol	Chain	Residues	Atoms				AltConf	Trace
			Total	C	N	O		
4	G	3	Total 38	C 22	N 2	O 14	0	0
4	K	3	Total 38	C 22	N 2	O 14	0	0

- Molecule 5 is 2-acetamido-2-deoxy-beta-D-glucopyranose (CCD ID: NAG) (formula: C<sub>8</sub>H<sub>15</sub>NO<sub>6</sub>).

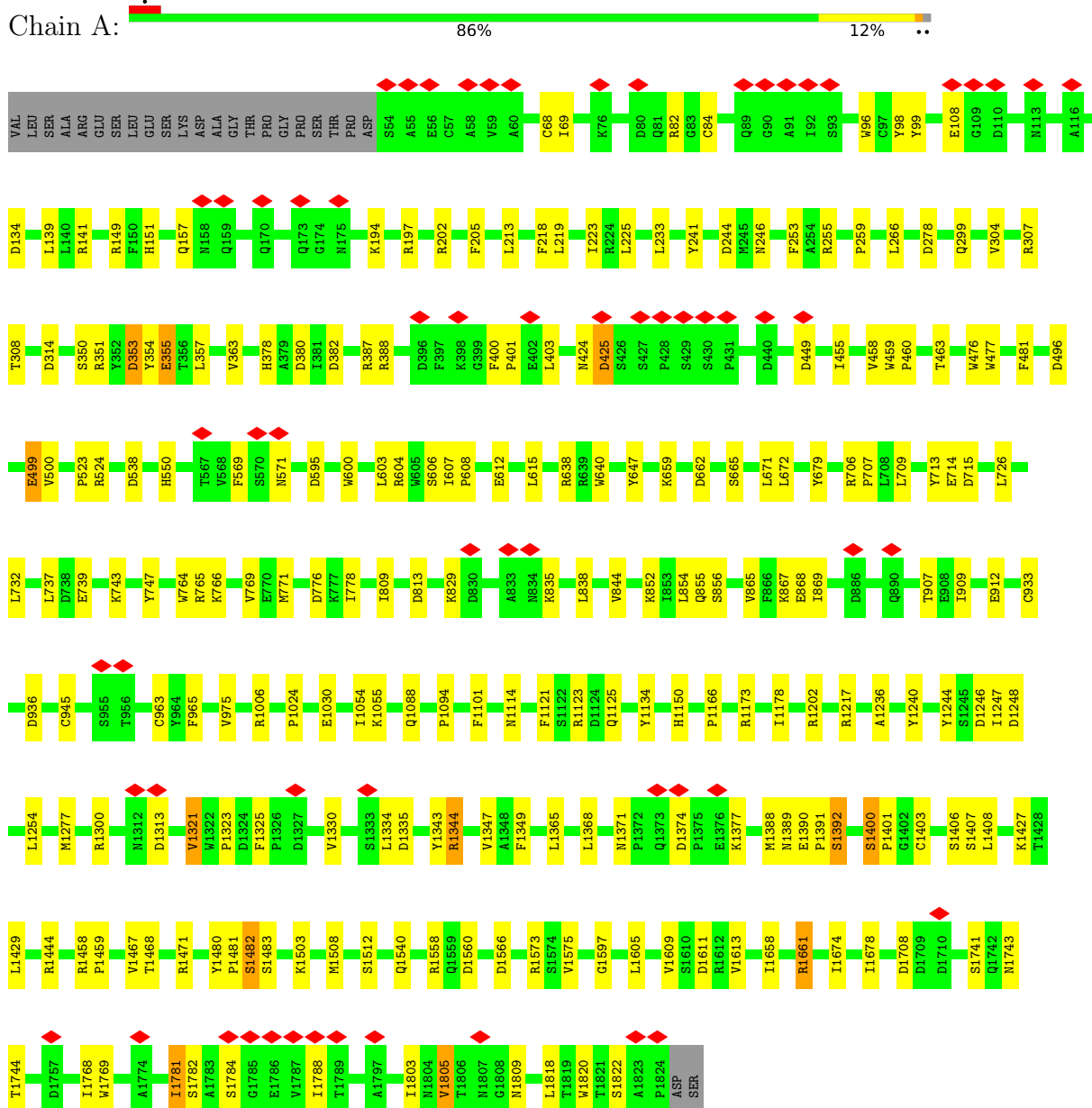


Mol	Chain	Residues	Atoms				AltConf
			Total	C	N	O	
5	A	1	Total 14	C 8	N 1	O 5	0
5	A	1	Total 14	C 8	N 1	O 5	0

### 3 Residue-property plots

These plots are drawn for all protein, RNA, DNA and oligosaccharide chains in the entry. The first graphic for a chain summarises the proportions of the various outlier classes displayed in the second graphic. The second graphic shows the sequence view annotated by issues in geometry and atom inclusion in map density. Residues are color-coded according to the number of geometric quality criteria for which they contain at least one outlier: green = 0, yellow = 1, orange = 2 and red = 3 or more. A red diamond above a residue indicates a poor fit to the EM map for this residue (all-atom inclusion < 40%). Stretches of 2 or more consecutive residues without any outlier are shown as a green connector. Residues present in the sample, but not in the model, are shown in grey.

#### • Molecule 1: Maltase-glucoamylase



- Molecule 2: 4,6-dideoxy-4-[[[(1S,4R,5S,6S)-4,5,6-trihydroxy-3-(hydroxymethyl)cyclohex-2-en-1-yl]amino}-alpha-D-glucopyranose-(1-4)-alpha-D-glucopyranose-(1-4)-alpha-D-glucopyranose-(1-4)-beta-D-glucopyranose



- Molecule 2: 4,6-dideoxy-4-[[[(1S,4R,5S,6S)-4,5,6-trihydroxy-3-(hydroxymethyl)cyclohex-2-en-1-yl]amino}-alpha-D-glucopyranose-(1-4)-alpha-D-glucopyranose-(1-4)-alpha-D-glucopyranose-(1-4)-beta-D-glucopyranose



- Molecule 3: 2-acetamido-2-deoxy-beta-D-glucopyranose-(1-4)-2-acetamido-2-deoxy-beta-D-glucopyranose



- Molecule 3: 2-acetamido-2-deoxy-beta-D-glucopyranose-(1-4)-2-acetamido-2-deoxy-beta-D-glucopyranose



- Molecule 3: 2-acetamido-2-deoxy-beta-D-glucopyranose-(1-4)-2-acetamido-2-deoxy-beta-D-glucopyranose



- Molecule 3: 2-acetamido-2-deoxy-beta-D-glucopyranose-(1-4)-2-acetamido-2-deoxy-beta-D-glucopyranose



MAG1  
MAG2

- Molecule 3: 2-acetamido-2-deoxy-beta-D-glucopyranose-(1-4)-2-acetamido-2-deoxy-beta-D-glucopyranose



MAG1  
MAG2

- Molecule 3: 2-acetamido-2-deoxy-beta-D-glucopyranose-(1-4)-2-acetamido-2-deoxy-beta-D-glucopyranose



MAG1  
MAG2

- Molecule 3: 2-acetamido-2-deoxy-beta-D-glucopyranose-(1-4)-2-acetamido-2-deoxy-beta-D-glucopyranose



MAG1  
MAG2

- Molecule 3: 2-acetamido-2-deoxy-beta-D-glucopyranose-(1-4)-2-acetamido-2-deoxy-beta-D-glucopyranose



MAG1  
MAG2

- Molecule 4: 2-acetamido-2-deoxy-beta-D-glucopyranose-(1-4)-[alpha-L-fucopyranose-(1-6)]2-acetamido-2-deoxy-beta-D-glucopyranose



MAG1  
MAG2  
FUC3

- Molecule 4: 2-acetamido-2-deoxy-beta-D-glucopyranose-(1-4)-[alpha-L-fucopyranose-(1-6)]2-acetamido-2-deoxy-beta-D-glucopyranose





## 4 Experimental information

Property	Value	Source
EM reconstruction method	SINGLE PARTICLE	Depositor
Imposed symmetry	POINT, C1	Depositor
Number of particles used	607435	Depositor
Resolution determination method	FSC 0.143 CUT-OFF	Depositor
CTF correction method	PHASE FLIPPING AND AMPLITUDE CORRECTION	Depositor
Microscope	TFS KRIOS	Depositor
Voltage (kV)	300	Depositor
Electron dose ( $e^-/\text{\AA}^2$ )	49	Depositor
Minimum defocus (nm)	1000	Depositor
Maximum defocus (nm)	1800	Depositor
Magnification	105000	Depositor
Image detector	GATAN K3 BIOQUANTUM (6k x 4k)	Depositor
Maximum map value	0.100	Depositor
Minimum map value	-0.048	Depositor
Average map value	0.000	Depositor
Map value standard deviation	0.004	Depositor
Recommended contour level	0.015	Depositor
Map size ( $\text{\AA}$ )	200.86, 200.86, 200.86	wwPDB
Map dimensions	242, 242, 242	wwPDB
Map angles ( $^\circ$ )	90.0, 90.0, 90.0	wwPDB
Pixel spacing ( $\text{\AA}$ )	0.83, 0.83, 0.83	Depositor

## 5 Model quality

### 5.1 Standard geometry

Bond lengths and bond angles in the following residue types are not validated in this section: AC1, NAG, BGC, FUC, GLC

The Z score for a bond length (or angle) is the number of standard deviations the observed value is removed from the expected value. A bond length (or angle) with  $|Z| > 5$  is considered an outlier worth inspection. RMSZ is the root-mean-square of all Z scores of the bond lengths (or angles).

Mol	Chain	Bond lengths		Bond angles	
		RMSZ	# Z  >5	RMSZ	# Z  >5
1	A	0.72	0/14643	1.04	16/19978 (0.1%)

Chiral center outliers are detected by calculating the chiral volume of a chiral center and verifying if the center is modelled as a planar moiety or with the opposite hand. A planarity outlier is detected by checking planarity of atoms in a peptide group, atoms in a mainchain group or atoms of a sidechain that are expected to be planar.

Mol	Chain	#Chirality outliers	#Planarity outliers
1	A	0	15

There are no bond length outliers.

All (16) bond angle outliers are listed below:

Mol	Chain	Res	Type	Atoms	Z	Observed(°)	Ideal(°)
1	A	523	PRO	CA-C-O	-9.56	114.02	121.38
1	A	424	ASN	CA-CB-CG	7.30	119.90	112.60
1	A	1134	TYR	CA-C-N	-6.91	116.02	122.17
1	A	1134	TYR	C-N-CA	-6.91	116.02	122.17
1	A	1240	TYR	CA-CB-CG	6.74	126.03	113.90
1	A	425	ASP	CA-CB-CG	6.26	118.86	112.60
1	A	449	ASP	CA-CB-CG	6.10	118.70	112.60
1	A	766	LYS	CB-CA-C	6.08	120.00	111.86
1	A	299	GLN	CB-CA-C	6.01	119.60	109.32
1	A	96	TRP	N-CA-C	-5.66	106.92	113.88
1	A	1368	LEU	N-CA-C	-5.58	105.20	112.23
1	A	1244	TYR	CB-CA-C	-5.14	100.58	110.24
1	A	499	GLU	CA-C-O	-5.08	115.49	120.82
1	A	569	PHE	CB-CA-C	5.04	118.12	109.51
1	A	854	LEU	N-CA-C	-5.02	107.71	113.88
1	A	1121	PHE	CA-CB-CG	5.02	118.82	113.80

There are no chirality outliers.

All (15) planarity outliers are listed below:

Mol	Chain	Res	Type	Group
1	A	1217	ARG	Sidechain
1	A	1300	ARG	Sidechain
1	A	1344	ARG	Sidechain
1	A	1400	SER	Peptide
1	A	141	ARG	Sidechain
1	A	1427[B]	LYS	Mainchain
1	A	1471	ARG	Sidechain
1	A	149	ARG	Sidechain
1	A	1661	ARG	Sidechain
1	A	197	ARG	Sidechain
1	A	351	ARG	Sidechain
1	A	387	ARG	Sidechain
1	A	388	ARG	Sidechain
1	A	524	ARG	Sidechain
1	A	765	ARG	Sidechain

## 5.2 Too-close contacts [i](#)

In the following table, the Non-H and H(model) columns list the number of non-hydrogen atoms and hydrogen atoms in the chain respectively. The H(added) column lists the number of hydrogen atoms added and optimized by MolProbity. The Clashes column lists the number of clashes within the asymmetric unit, whereas Symm-Clashes lists symmetry-related clashes.

Mol	Chain	Non-H	H(model)	H(added)	Clashes	Symm-Clashes
1	A	14221	0	13554	113	0
2	B	55	0	39	2	0
2	C	55	0	39	0	0
3	D	28	0	25	1	0
3	E	28	0	25	0	0
3	F	28	0	25	0	0
3	H	28	0	25	1	0
3	I	28	0	25	0	0
3	J	28	0	25	0	0
3	L	28	0	25	0	0
3	M	28	0	25	0	0
4	G	38	0	34	0	0
4	K	38	0	34	0	0
5	A	28	0	26	1	0
All	All	14659	0	13926	114	0

The all-atom clashscore is defined as the number of clashes found per 1000 atoms (including hydrogen atoms). The all-atom clashscore for this structure is 4.

All (114) close contacts within the same asymmetric unit are listed below, sorted by their clash magnitude.

Atom-1	Atom-2	Interatomic distance (Å)	Clash overlap (Å)
1:A:477:TRP:NE1	1:A:481:PHE:HE2	1.74	0.86
1:A:225:LEU:HD11	1:A:304:VAL:HG23	1.67	0.76
1:A:1803:ILE:HD13	1:A:1818:LEU:HD11	1.71	0.72
1:A:1743:ASN:HA	1:A:1820:TRP:CZ2	2.27	0.70
1:A:1391:PRO:HG2	1:A:1429:LEU:HD13	1.75	0.69
1:A:84:CYS:HB3	1:A:98:TYR:O	1.92	0.68
1:A:671:LEU:HD11	1:A:776:ASP:HB3	1.76	0.67
1:A:477:TRP:CE2	1:A:481:PHE:HE2	2.14	0.65
1:A:219:LEU:HB2	1:A:308:THR:HG22	1.79	0.62
1:A:726:LEU:HD23	1:A:732:LEU:HA	1.83	0.60
1:A:477:TRP:CE2	1:A:481:PHE:CE2	2.90	0.59
1:A:835:LYS:HD2	1:A:855:GLN:HE22	1.66	0.59
1:A:139:LEU:HB2	1:A:157:GLN:HG3	1.84	0.58
1:A:945:CYS:CB	1:A:963:CYS:HG	2.15	0.58
1:A:357:LEU:HD11	1:A:403:LEU:HD22	1.87	0.57
1:A:380:ASP:OD1	2:B:4:AC1:O6B	2.20	0.55
1:A:672:LEU:C	1:A:672:LEU:HD23	2.32	0.55
1:A:460:PRO:HG2	1:A:463:THR:CG2	2.38	0.54
1:A:607:ILE:HB	1:A:608:PRO:HD3	1.90	0.53
1:A:1114:ASN:HA	1:A:1166:PRO:HG3	1.90	0.53
1:A:1481:PRO:O	1:A:1482:SER:HB3	2.08	0.53
1:A:813:ASP:HB3	1:A:1055:LYS:HG2	1.91	0.53
1:A:1678:ILE:HD12	1:A:1769:TRP:CZ3	2.44	0.53
1:A:600:TRP:CZ2	1:A:739:GLU:HA	2.44	0.52
1:A:241:TYR:OH	1:A:615:LEU:HD11	2.10	0.52
1:A:499:GLU:N	1:A:500:VAL:HA	2.24	0.52
1:A:476:TRP:CZ3	1:A:477:TRP:HE3	2.28	0.52
1:A:835:LYS:HD2	1:A:855:GLN:NE2	2.25	0.52
1:A:662:ASP:OD1	1:A:665:SER:OG	2.27	0.52
1:A:354:TYR:O	1:A:355:GLU:HB2	2.08	0.52
1:A:353:ASP:HA	1:A:382:ASP:OD2	2.11	0.51
1:A:350:SER:HB2	1:A:378:HIS:HB2	1.91	0.51
1:A:1390:GLU:N	1:A:1391:PRO:HA	2.25	0.51
1:A:638:ARG:HG3	1:A:672:LEU:HA	1.93	0.50
1:A:865:VAL:HG12	1:A:912:GLU:HA	1.93	0.50
1:A:868:GLU:HG2	1:A:907:THR:HG22	1.94	0.50
1:A:1540:GLN:HA	1:A:1575:VAL:HG21	1.92	0.50

*Continued on next page...*

*Continued from previous page...*

Atom-1	Atom-2	Interatomic distance (Å)	Clash overlap (Å)
1:A:1325:PHE:CE1	3:H:1:NAG:H82	2.48	0.49
1:A:1330:VAL:HG13	1:A:1343:TYR:CD2	2.48	0.49
1:A:69:ILE:HA	1:A:82:ARG:NH1	2.27	0.49
1:A:151:HIS:NE2	1:A:314:ASP:OD1	2.44	0.49
1:A:354:TYR:HE1	1:A:363:VAL:HG21	1.77	0.49
1:A:852:LYS:HB3	1:A:852:LYS:HE3	1.44	0.49
1:A:1254:LEU:HD23	1:A:1323:PRO:HB3	1.95	0.48
1:A:244:ASP:OD1	1:A:246:ASN:ND2	2.46	0.48
1:A:425:ASP:O	1:A:425:ASP:OD1	2.31	0.48
1:A:205:PHE:CZ	1:A:223:ILE:HG12	2.49	0.47
1:A:219:LEU:HB2	1:A:308:THR:CG2	2.44	0.47
1:A:218:PHE:CE1	1:A:307:ARG:HG2	2.49	0.47
1:A:357:LEU:CD1	1:A:403:LEU:HD22	2.44	0.47
1:A:1611:ASP:OD2	1:A:1613:VAL:HB	2.15	0.47
1:A:1458:ARG:HB3	1:A:1459:PRO:HD3	1.97	0.46
1:A:1741:SER:O	1:A:1744:THR:HG22	2.15	0.46
1:A:743:LYS:HA	1:A:771:MET:O	2.16	0.46
1:A:1246:ASP:C	1:A:1248:ASP:H	2.24	0.46
1:A:259:PRO:HD2	1:A:595:ASP:O	2.15	0.46
1:A:1558:ARG:NH2	1:A:1560:ASP:OD1	2.49	0.46
1:A:659:LYS:HB3	1:A:659:LYS:HE3	1.64	0.46
1:A:202:ARG:NH2	1:A:278:ASP:OD2	2.48	0.46
1:A:1480:TYR:O	1:A:1481:PRO:C	2.60	0.45
1:A:538:ASP:OD1	1:A:538:ASP:N	2.48	0.45
1:A:1400:SER:HA	1:A:1401:PRO:C	2.42	0.45
1:A:571:ASN:HA	1:A:829:LYS:HE2	1.99	0.45
1:A:1006:ARG:HG2	1:A:1024:PRO:HG3	1.98	0.45
1:A:1236:ALA:O	1:A:1573:ARG:NH1	2.49	0.45
1:A:1030:GLU:HG2	1:A:1178:ILE:HG12	1.98	0.45
1:A:706:ARG:HA	1:A:707:PRO:HD3	1.89	0.45
1:A:1088:GLN:HG3	1:A:1173:ARG:HG2	1.98	0.45
1:A:194:LYS:HA	1:A:205:PHE:O	2.17	0.44
1:A:253:PHE:CE1	1:A:550:HIS:CD2	3.06	0.44
1:A:1321:VAL:HG23	1:A:1347:VAL:HG21	1.98	0.44
1:A:1390:GLU:OE1	1:A:1392:SER:OG	2.32	0.44
1:A:69:ILE:HG22	1:A:69:ILE:O	2.18	0.44
1:A:1371:ASN:HB3	1:A:1374:ASP:O	2.17	0.44
1:A:1480:TYR:CG	1:A:1481:PRO:HD2	2.52	0.44
1:A:764:TRP:CG	1:A:769:VAL:HG11	2.53	0.43
1:A:867:LYS:HA	1:A:909:ILE:O	2.18	0.43
1:A:1388:MET:HE3	1:A:1392:SER:HB2	2.00	0.43

*Continued on next page...*

*Continued from previous page...*

Atom-1	Atom-2	Interatomic distance (Å)	Clash overlap (Å)
1:A:400:PHE:HB3	1:A:401:PRO:HD3	2.01	0.43
1:A:1708:ASP:OD1	1:A:1708:ASP:C	2.60	0.43
1:A:1467:VAL:HG23	1:A:1468:THR:HG23	2.00	0.43
1:A:936:ASP:OD1	1:A:936:ASP:N	2.51	0.43
1:A:1408:LEU:HD11	1:A:1444:ARG:HD2	2.00	0.43
1:A:1389:ASN:OD1	1:A:1389:ASN:N	2.50	0.42
1:A:869:ILE:HG13	1:A:909:ILE:HD11	2.01	0.42
5:A:1901:NAG:H82	5:A:1901:NAG:H2	1.88	0.42
1:A:933:CYS:HA	1:A:965:PHE:CE2	2.54	0.42
1:A:455:ILE:HG21	3:D:1:NAG:H62	2.01	0.42
1:A:662:ASP:CG	1:A:665:SER:OG	2.63	0.42
1:A:1349:PHE:CE2	1:A:1429:LEU:HD11	2.55	0.42
1:A:603:LEU:HD13	1:A:640:TRP:CG	2.55	0.42
1:A:679:TYR:CZ	1:A:778:ILE:HG22	2.54	0.42
1:A:1094:PRO:HG3	1:A:1150:HIS:NE2	2.35	0.42
1:A:606:SER:OG	1:A:647:TYR:OH	2.36	0.42
1:A:255:ARG:N	1:A:266:LEU:O	2.47	0.42
1:A:496:ASP:OD2	2:B:4:AC1:HCB2	2.20	0.42
1:A:604:ARG:HG2	1:A:737:LEU:HB3	2.02	0.41
1:A:1202:ARG:NH1	1:A:1597:GLY:HA3	2.35	0.41
1:A:809:ILE:HD13	1:A:844:VAL:HG21	2.00	0.41
1:A:1781:ILE:HD12	1:A:1805:VAL:HG11	2.02	0.41
1:A:715:ASP:OD2	1:A:747:TYR:OH	2.24	0.41
1:A:459:TRP:N	1:A:460:PRO:HD2	2.35	0.41
1:A:1408:LEU:HD23	1:A:1408:LEU:HA	1.90	0.41
1:A:714:GLU:CD	1:A:714:GLU:H	2.27	0.41
1:A:838:LEU:HD23	1:A:856:SER:HA	2.02	0.41
1:A:1277:MET:HE3	1:A:1277:MET:HB3	1.73	0.41
1:A:354:TYR:CE1	1:A:363:VAL:HG21	2.56	0.41
1:A:1377:LYS:HB3	1:A:1377:LYS:HE3	1.67	0.41
1:A:709:LEU:O	1:A:713:TYR:HB3	2.20	0.41
1:A:975:VAL:HG13	1:A:1054:ILE:HD12	2.03	0.41
1:A:99:TYR:CE1	1:A:213:LEU:HD11	2.56	0.40
1:A:612:GLU:O	1:A:615:LEU:HB2	2.21	0.40
1:A:1123:ARG:HD3	1:A:1125:GLN:HB2	2.04	0.40
1:A:1344:ARG:HA	1:A:1344:ARG:HD2	1.87	0.40

There are no symmetry-related clashes.

## 5.3 Torsion angles [i](#)

### 5.3.1 Protein backbone [i](#)

In the following table, the Percentiles column shows the percent Ramachandran outliers of the chain as a percentile score with respect to all PDB entries followed by that with respect to all EM entries.

The Analysed column shows the number of residues for which the backbone conformation was analysed, and the total number of residues.

Mol	Chain	Analysed	Favoured	Allowed	Outliers	Percentiles
1	A	1771/1795 (99%)	1688 (95%)	76 (4%)	7 (0%)	30 57

All (7) Ramachandran outliers are listed below:

Mol	Chain	Res	Type
1	A	233	LEU
1	A	353	ASP
1	A	1247	ILE
1	A	1321	VAL
1	A	458	VAL
1	A	355	GLU
1	A	1101	PHE

### 5.3.2 Protein sidechains [i](#)

In the following table, the Percentiles column shows the percent sidechain outliers of the chain as a percentile score with respect to all PDB entries followed by that with respect to all EM entries.

The Analysed column shows the number of residues for which the sidechain conformation was analysed, and the total number of residues.

Mol	Chain	Analysed	Rotameric	Outliers	Percentiles
1	A	580/1569 (37%)	550 (95%)	30 (5%)	21 50

All (30) residues with a non-rotameric sidechain are listed below:

Mol	Chain	Res	Type
1	A	68	CYS
1	A	108	GLU
1	A	134	ASP
1	A	1313	ASP

*Continued on next page...*

*Continued from previous page...*

Mol	Chain	Res	Type
1	A	1334	LEU
1	A	1335	ASP
1	A	1365	LEU
1	A	1392	SER
1	A	1403	CYS
1	A	1406	SER
1	A	1407	SER
1	A	1482	SER
1	A	1483	SER
1	A	1503	LYS
1	A	1508	MET
1	A	1512	SER
1	A	1566	ASP
1	A	1605	LEU
1	A	1609	VAL
1	A	1658	ILE
1	A	1661	ARG
1	A	1674	ILE
1	A	1768	ILE
1	A	1781	ILE
1	A	1782	SER
1	A	1784	SER
1	A	1788	ILE
1	A	1805	VAL
1	A	1809	ASN
1	A	1822	SER

Sometimes sidechains can be flipped to improve hydrogen bonding and reduce clashes. All (3) such sidechains are listed below:

Mol	Chain	Res	Type
1	A	72	GLN
1	A	1465	GLN
1	A	1551	HIS

### 5.3.3 RNA [i](#)

There are no RNA molecules in this entry.

## 5.4 Non-standard residues in protein, DNA, RNA chains [i](#)

There are no non-standard protein/DNA/RNA residues in this entry.

## 5.5 Carbohydrates [i](#)

30 monosaccharides are modelled in this entry.

In the following table, the Counts columns list the number of bonds (or angles) for which Mogul statistics could be retrieved, the number of bonds (or angles) that are observed in the model and the number of bonds (or angles) that are defined in the Chemical Component Dictionary. The Link column lists molecule types, if any, to which the group is linked. The Z score for a bond length (or angle) is the number of standard deviations the observed value is removed from the expected value. A bond length (or angle) with  $|Z| > 2$  is considered an outlier worth inspection. RMSZ is the root-mean-square of all Z scores of the bond lengths (or angles).

Mol	Type	Chain	Res	Link	Bond lengths			Bond angles		
					Counts	RMSZ	# Z  > 2	Counts	RMSZ	# Z  > 2
2	BGC	B	1	2	12,12,12	0.96	0	17,17,17	0.77	0
2	GLC	B	2	2	11,11,12	1.14	1 (9%)	15,15,17	1.04	2 (13%)
2	GLC	B	3	2	11,11,12	0.83	0	15,15,17	1.29	1 (6%)
2	AC1	B	4	2	21,22,23	0.63	0	22,32,34	1.01	0
2	BGC	C	1	2	12,12,12	0.10	0	17,17,17	0.27	0
2	GLC	C	2	2	11,11,12	0.39	0	15,15,17	1.18	1 (6%)
2	GLC	C	3	2	11,11,12	0.25	0	15,15,17	0.58	0
2	AC1	C	4	2	21,22,23	0.20	0	22,32,34	0.64	0
3	NAG	D	1	1,3	14,14,15	0.43	0	17,19,21	1.37	3 (17%)
3	NAG	D	2	3	14,14,15	0.38	0	17,19,21	0.87	1 (5%)
3	NAG	E	1	1,3	14,14,15	0.45	0	17,19,21	0.91	1 (5%)
3	NAG	E	2	3	14,14,15	0.35	0	17,19,21	0.64	0
3	NAG	F	1	1,3	14,14,15	0.36	0	17,19,21	1.46	2 (11%)
3	NAG	F	2	3	14,14,15	0.34	0	17,19,21	1.04	2 (11%)
4	NAG	G	1	1,4	14,14,15	0.43	0	17,19,21	0.65	0
4	NAG	G	2	4	14,14,15	0.33	0	17,19,21	0.73	0
4	FUC	G	3	4	10,10,11	0.44	0	14,14,16	0.59	0
3	NAG	H	1	1,3	14,14,15	0.33	0	17,19,21	0.58	0
3	NAG	H	2	3	14,14,15	0.34	0	17,19,21	1.10	2 (11%)
3	NAG	I	1	1,3	14,14,15	0.38	0	17,19,21	0.45	0
3	NAG	I	2	3	14,14,15	0.41	0	17,19,21	0.34	0
3	NAG	J	1	1,3	14,14,15	0.39	0	17,19,21	0.52	0
3	NAG	J	2	3	14,14,15	0.40	0	17,19,21	0.50	0
4	NAG	K	1	1,4	14,14,15	0.41	0	17,19,21	0.92	1 (5%)
4	NAG	K	2	4	14,14,15	0.39	0	17,19,21	0.62	0

Mol	Type	Chain	Res	Link	Bond lengths			Bond angles		
					Counts	RMSZ	# Z  > 2	Counts	RMSZ	# Z  > 2
4	FUC	K	3	4	10,10,11	0.23	0	14,14,16	0.63	1 (7%)
3	NAG	L	1	1,3	14,14,15	0.41	0	17,19,21	0.65	0
3	NAG	L	2	3	14,14,15	0.40	0	17,19,21	0.37	0
3	NAG	M	1	1,3	14,14,15	0.40	0	17,19,21	0.45	0
3	NAG	M	2	3	14,14,15	0.41	0	17,19,21	0.73	1 (5%)

In the following table, the Chirals column lists the number of chiral outliers, the number of chiral centers analysed, the number of these observed in the model and the number defined in the Chemical Component Dictionary. Similar counts are reported in the Torsion and Rings columns. '-' means no outliers of that kind were identified.

Mol	Type	Chain	Res	Link	Chirals	Torsions	Rings
2	BGC	B	1	2	-	2/2/22/22	0/1/1/1
2	GLC	B	2	2	-	2/2/19/22	0/1/1/1
2	GLC	B	3	2	-	0/2/19/22	0/1/1/1
2	AC1	B	4	2	-	1/6/43/46	0/2/2/2
2	BGC	C	1	2	-	0/2/22/22	0/1/1/1
2	GLC	C	2	2	-	2/2/19/22	0/1/1/1
2	GLC	C	3	2	-	1/2/19/22	0/1/1/1
2	AC1	C	4	2	-	3/6/43/46	0/2/2/2
3	NAG	D	1	1,3	-	2/6/23/26	0/1/1/1
3	NAG	D	2	3	-	0/6/23/26	0/1/1/1
3	NAG	E	1	1,3	-	0/6/23/26	0/1/1/1
3	NAG	E	2	3	-	0/6/23/26	0/1/1/1
3	NAG	F	1	1,3	-	4/6/23/26	0/1/1/1
3	NAG	F	2	3	-	1/6/23/26	0/1/1/1
4	NAG	G	1	1,4	-	0/6/23/26	0/1/1/1
4	NAG	G	2	4	-	0/6/23/26	0/1/1/1
4	FUC	G	3	4	-	-	0/1/1/1
3	NAG	H	1	1,3	-	0/6/23/26	0/1/1/1
3	NAG	H	2	3	-	2/6/23/26	0/1/1/1
3	NAG	I	1	1,3	-	2/6/23/26	0/1/1/1
3	NAG	I	2	3	-	0/6/23/26	0/1/1/1
3	NAG	J	1	1,3	-	4/6/23/26	0/1/1/1
3	NAG	J	2	3	-	2/6/23/26	0/1/1/1
4	NAG	K	1	1,4	-	2/6/23/26	0/1/1/1
4	NAG	K	2	4	-	2/6/23/26	0/1/1/1
4	FUC	K	3	4	-	-	0/1/1/1
3	NAG	L	1	1,3	-	3/6/23/26	0/1/1/1

Continued on next page...

Continued from previous page...

Mol	Type	Chain	Res	Link	Chirals	Torsions	Rings
3	NAG	L	2	3	-	0/6/23/26	0/1/1/1
3	NAG	M	1	1,3	-	1/6/23/26	0/1/1/1
3	NAG	M	2	3	-	3/6/23/26	0/1/1/1

All (1) bond length outliers are listed below:

Mol	Chain	Res	Type	Atoms	Z	Observed(Å)	Ideal(Å)
2	B	2	GLC	C2-C3	-2.07	1.49	1.52

All (18) bond angle outliers are listed below:

Mol	Chain	Res	Type	Atoms	Z	Observed(°)	Ideal(°)
3	F	1	NAG	C2-N2-C7	4.90	129.47	122.90
2	C	2	GLC	C1-C2-C3	3.89	115.31	109.64
4	K	1	NAG	O5-C1-C2	3.22	116.27	111.29
2	B	3	GLC	C1-C2-C3	3.18	114.27	109.64
3	D	1	NAG	O5-C1-C2	-3.07	106.55	111.29
3	F	2	NAG	C2-N2-C7	2.82	126.68	122.90
3	D	1	NAG	C1-C2-N2	2.77	114.80	110.43
3	H	2	NAG	C1-C2-N2	2.76	114.79	110.43
3	E	1	NAG	C1-C2-N2	2.58	114.51	110.43
3	H	2	NAG	C2-N2-C7	2.46	126.20	122.90
3	D	1	NAG	C2-N2-C7	2.43	126.15	122.90
3	M	2	NAG	O5-C1-C2	-2.33	107.68	111.29
3	F	2	NAG	C1-C2-N2	2.25	113.98	110.43
2	B	2	GLC	C3-C4-C5	-2.17	106.29	110.23
4	K	3	FUC	C1-C2-C3	2.16	112.79	109.64
3	F	1	NAG	C1-O5-C5	2.08	114.97	112.19
2	B	2	GLC	O5-C5-C4	-2.04	105.86	110.83
3	D	2	NAG	C1-O5-C5	2.01	114.87	112.19

There are no chirality outliers.

All (39) torsion outliers are listed below:

Mol	Chain	Res	Type	Atoms
2	C	4	AC1	C7B-C5B-C6B-O6B
3	F	1	NAG	C8-C7-N2-C2
3	I	1	NAG	C8-C7-N2-C2
3	I	1	NAG	O7-C7-N2-C2
3	J	1	NAG	C8-C7-N2-C2
3	J	1	NAG	O7-C7-N2-C2

Continued on next page...

*Continued from previous page...*

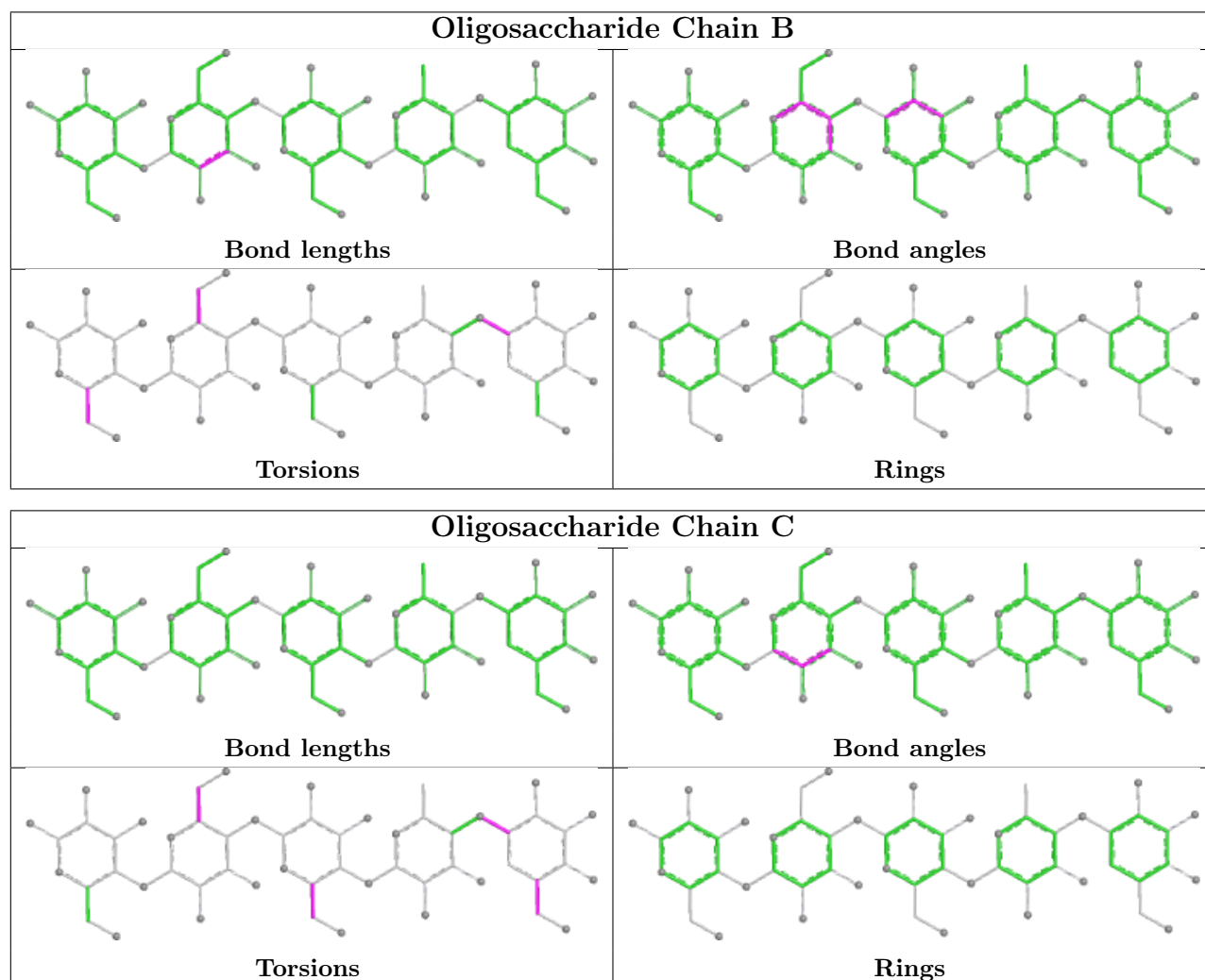
Mol	Chain	Res	Type	Atoms
3	J	2	NAG	C8-C7-N2-C2
3	L	1	NAG	C1-C2-N2-C7
3	L	1	NAG	C8-C7-N2-C2
3	L	1	NAG	O7-C7-N2-C2
2	B	1	BGC	O5-C5-C6-O6
2	C	2	GLC	O5-C5-C6-O6
4	K	2	NAG	C4-C5-C6-O6
3	F	1	NAG	O7-C7-N2-C2
3	J	2	NAG	O7-C7-N2-C2
2	C	2	GLC	C4-C5-C6-O6
2	B	1	BGC	C4-C5-C6-O6
2	B	2	GLC	C4-C5-C6-O6
2	B	2	GLC	O5-C5-C6-O6
4	K	2	NAG	O5-C5-C6-O6
3	D	1	NAG	C8-C7-N2-C2
3	D	1	NAG	O7-C7-N2-C2
3	H	2	NAG	C8-C7-N2-C2
3	H	2	NAG	O7-C7-N2-C2
3	J	1	NAG	O5-C5-C6-O6
3	J	1	NAG	C4-C5-C6-O6
4	K	1	NAG	C8-C7-N2-C2
3	M	2	NAG	C8-C7-N2-C2
4	K	1	NAG	O7-C7-N2-C2
3	F	1	NAG	C1-C2-N2-C7
2	C	4	AC1	C4A-C5B-C6B-O6B
2	B	4	AC1	C7B-C1B-N4A-C4
2	C	4	AC1	C7B-C1B-N4A-C4
3	M	2	NAG	O7-C7-N2-C2
3	F	1	NAG	C3-C2-N2-C7
3	F	2	NAG	C3-C2-N2-C7
2	C	3	GLC	O5-C5-C6-O6
3	M	2	NAG	C1-C2-N2-C7
3	M	1	NAG	C4-C5-C6-O6

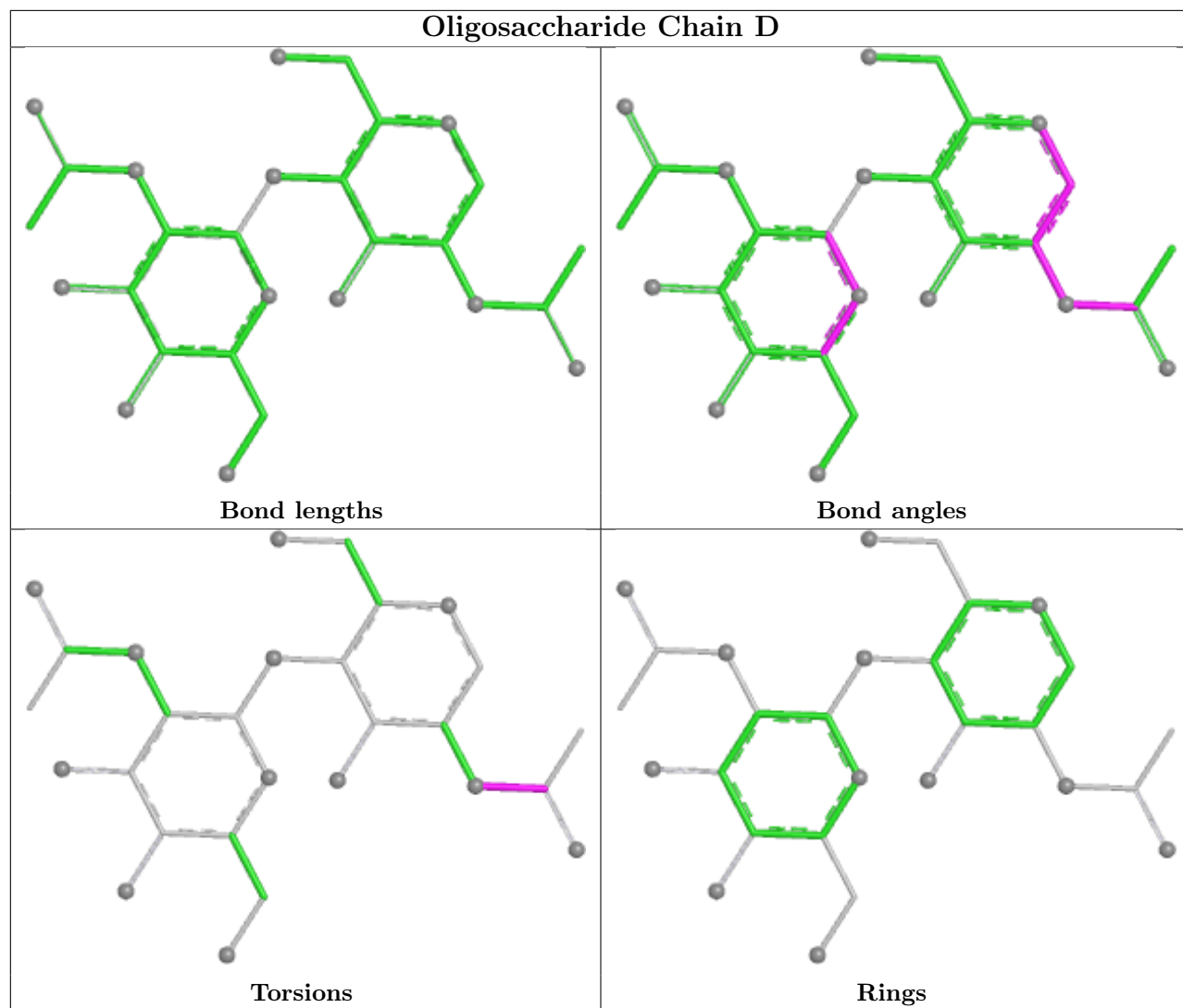
There are no ring outliers.

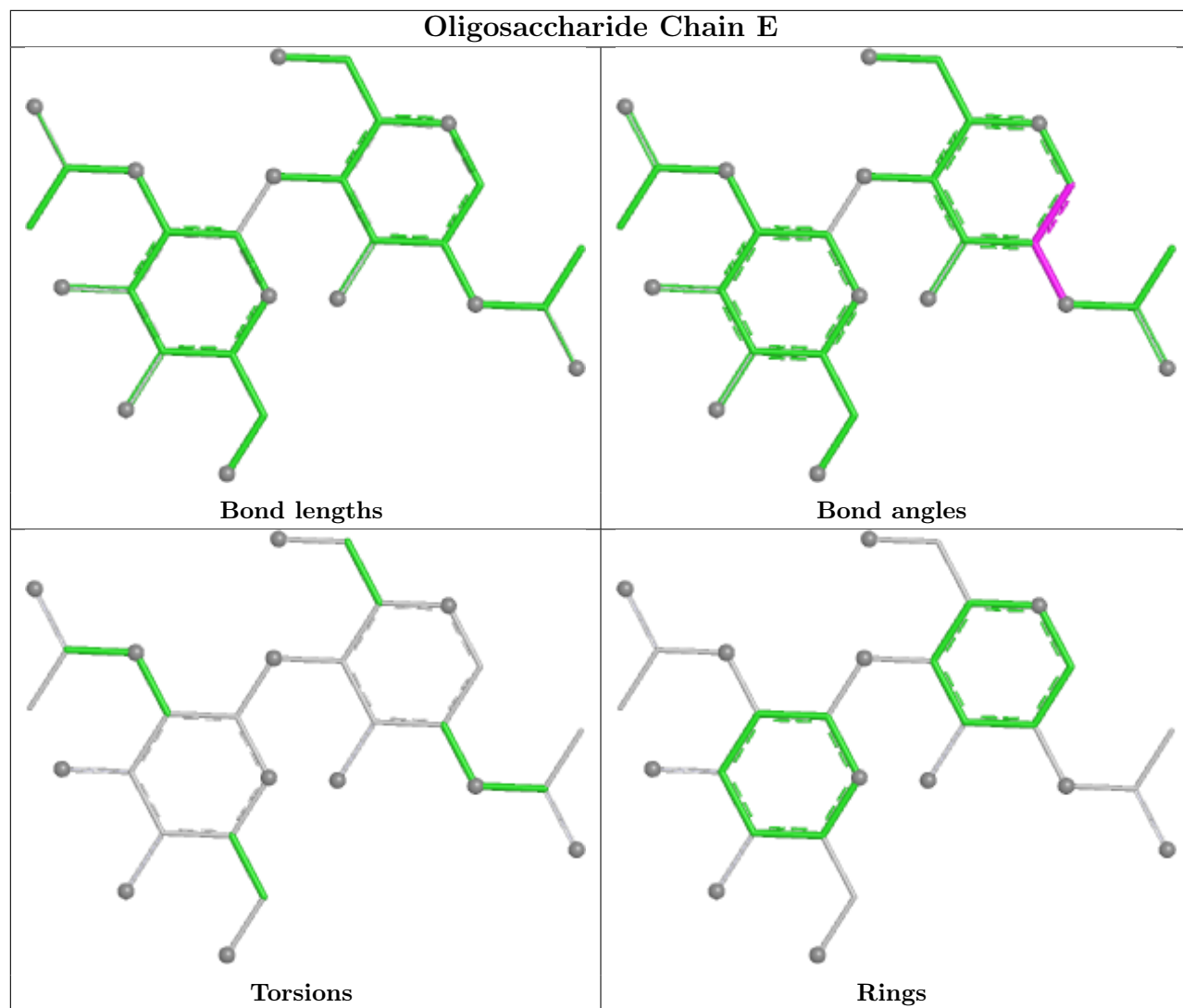
3 monomers are involved in 4 short contacts:

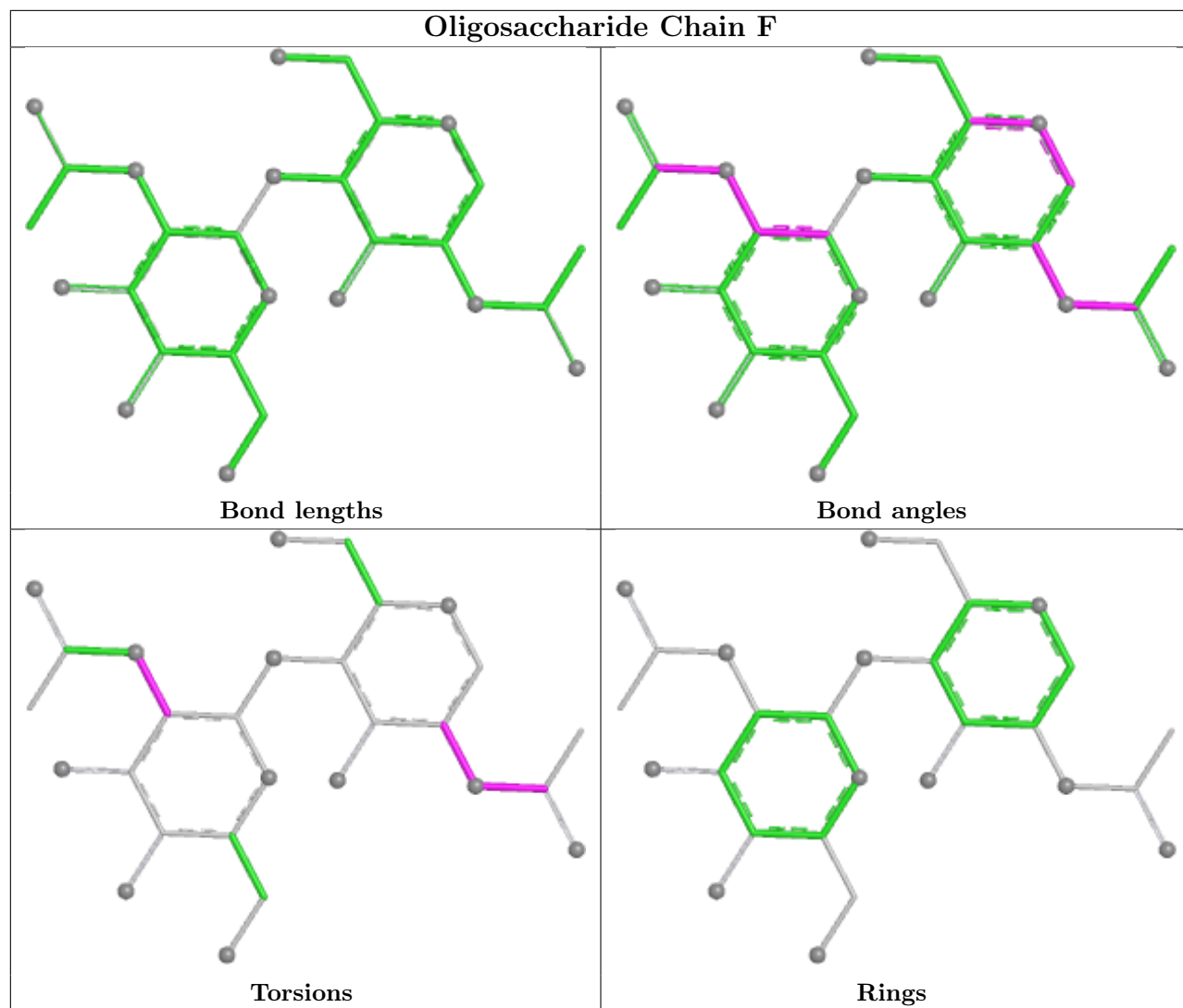
Mol	Chain	Res	Type	Clashes	Symm-Clashes
3	H	1	NAG	1	0
2	B	4	AC1	2	0
3	D	1	NAG	1	0

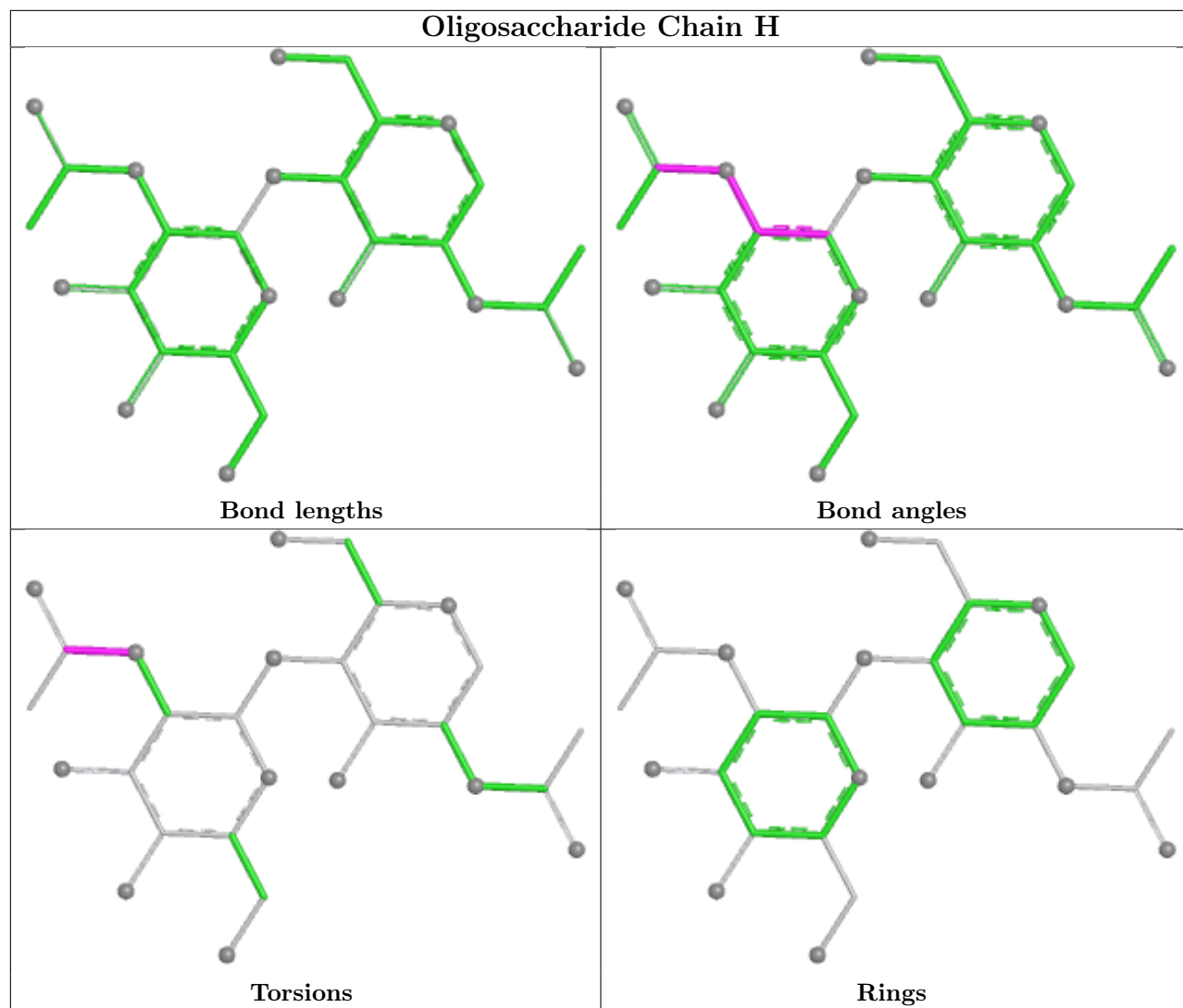
The following is a two-dimensional graphical depiction of Mogul quality analysis of bond lengths, bond angles, torsion angles, and ring geometry for oligosaccharide.

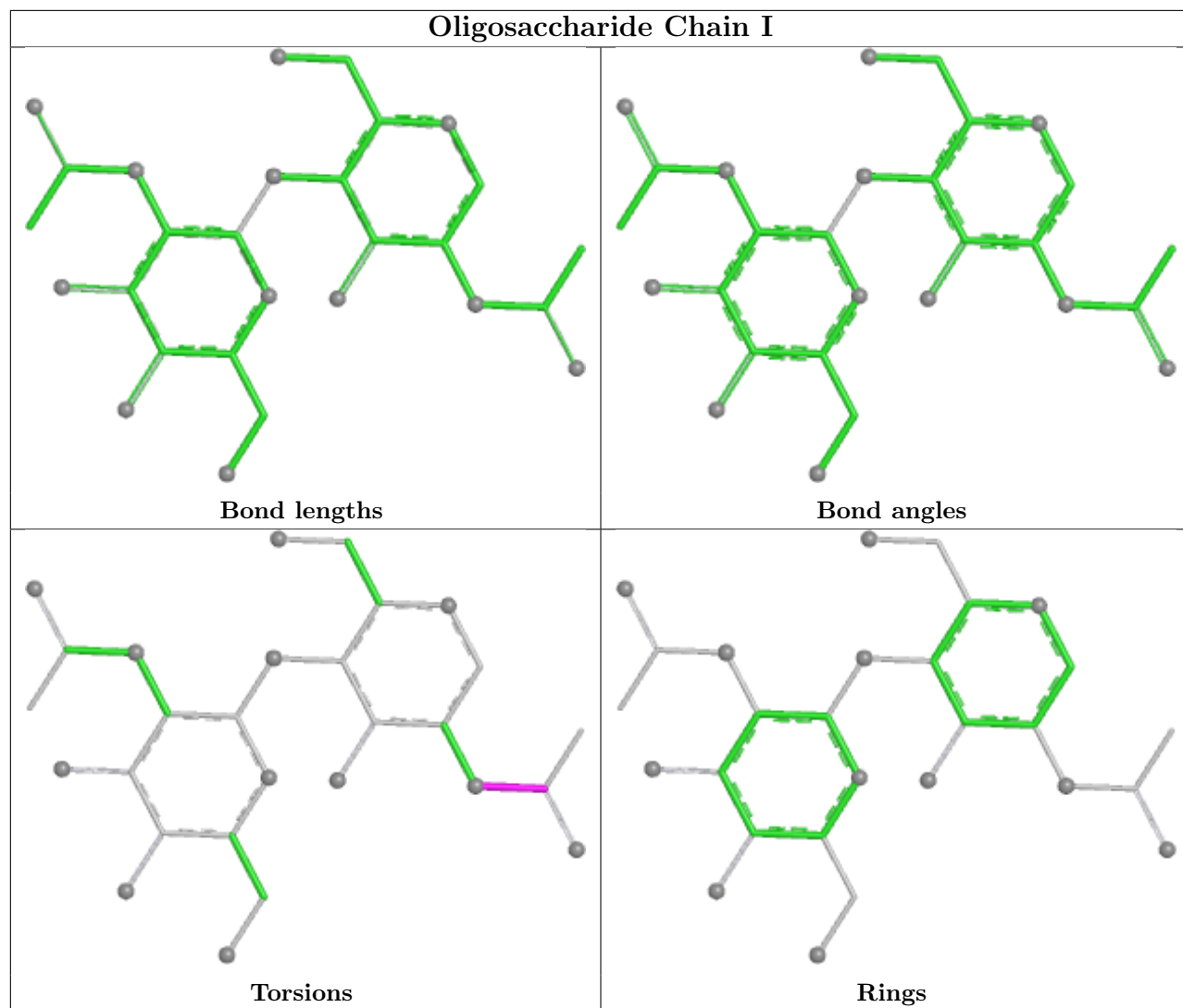


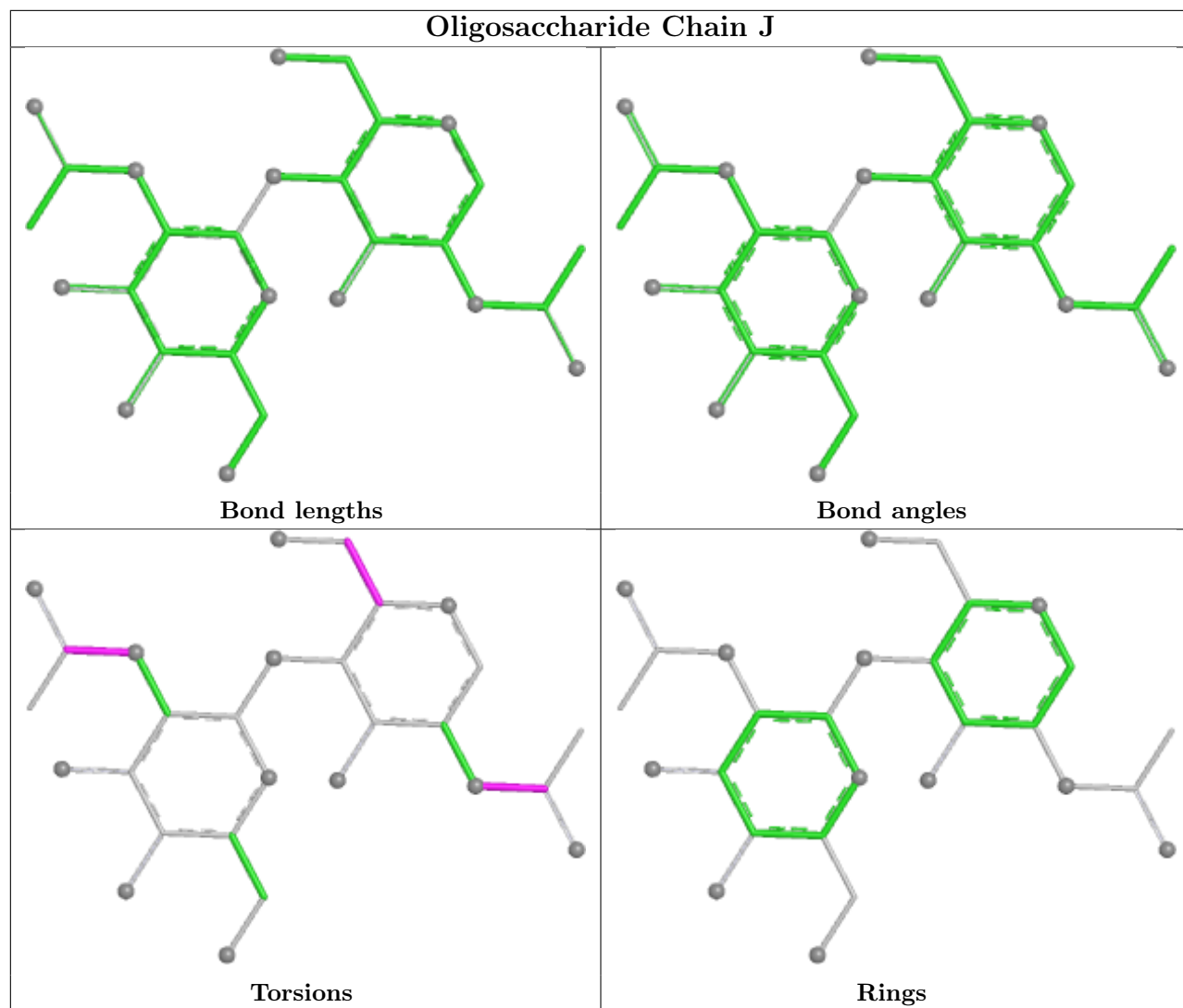


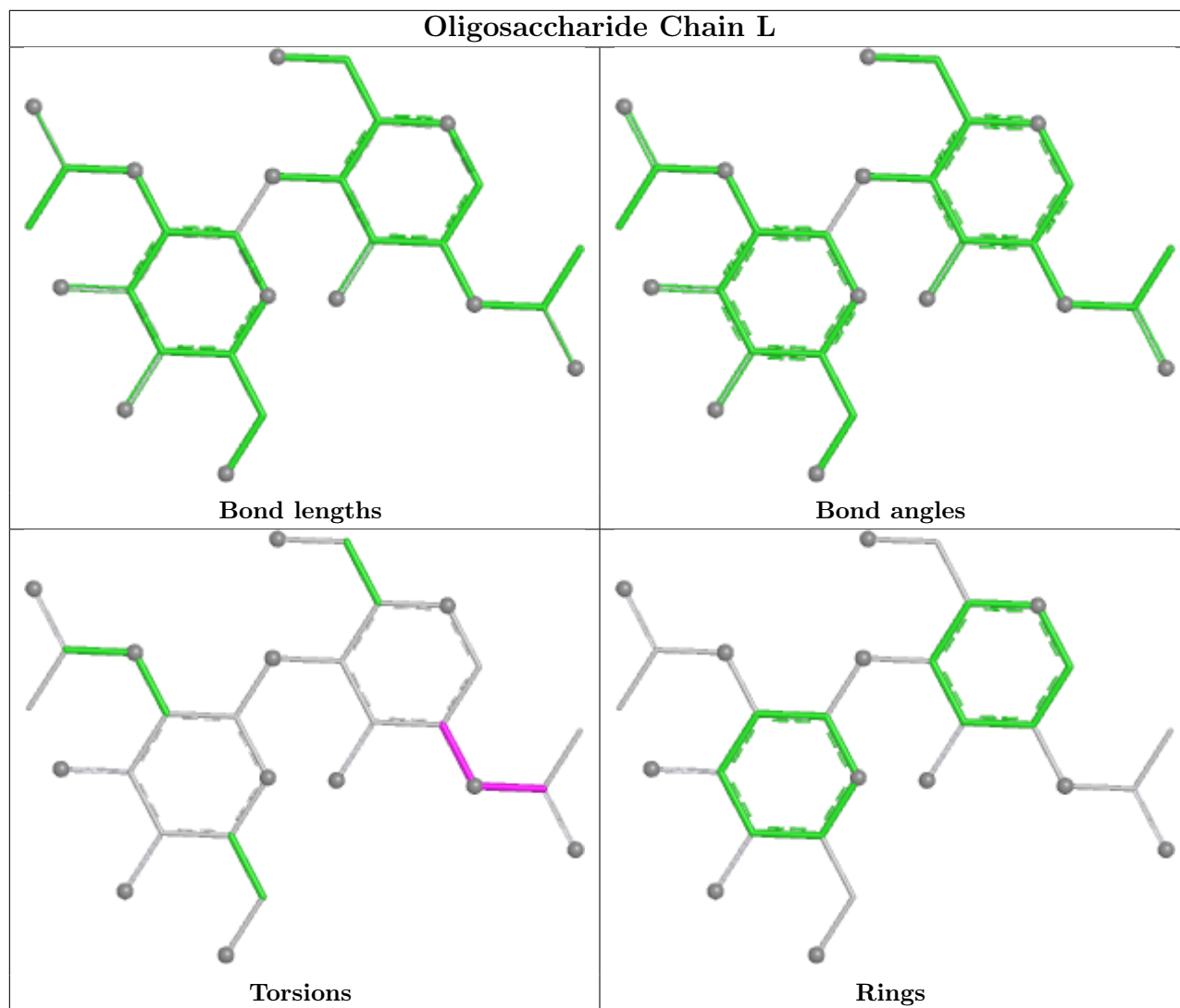


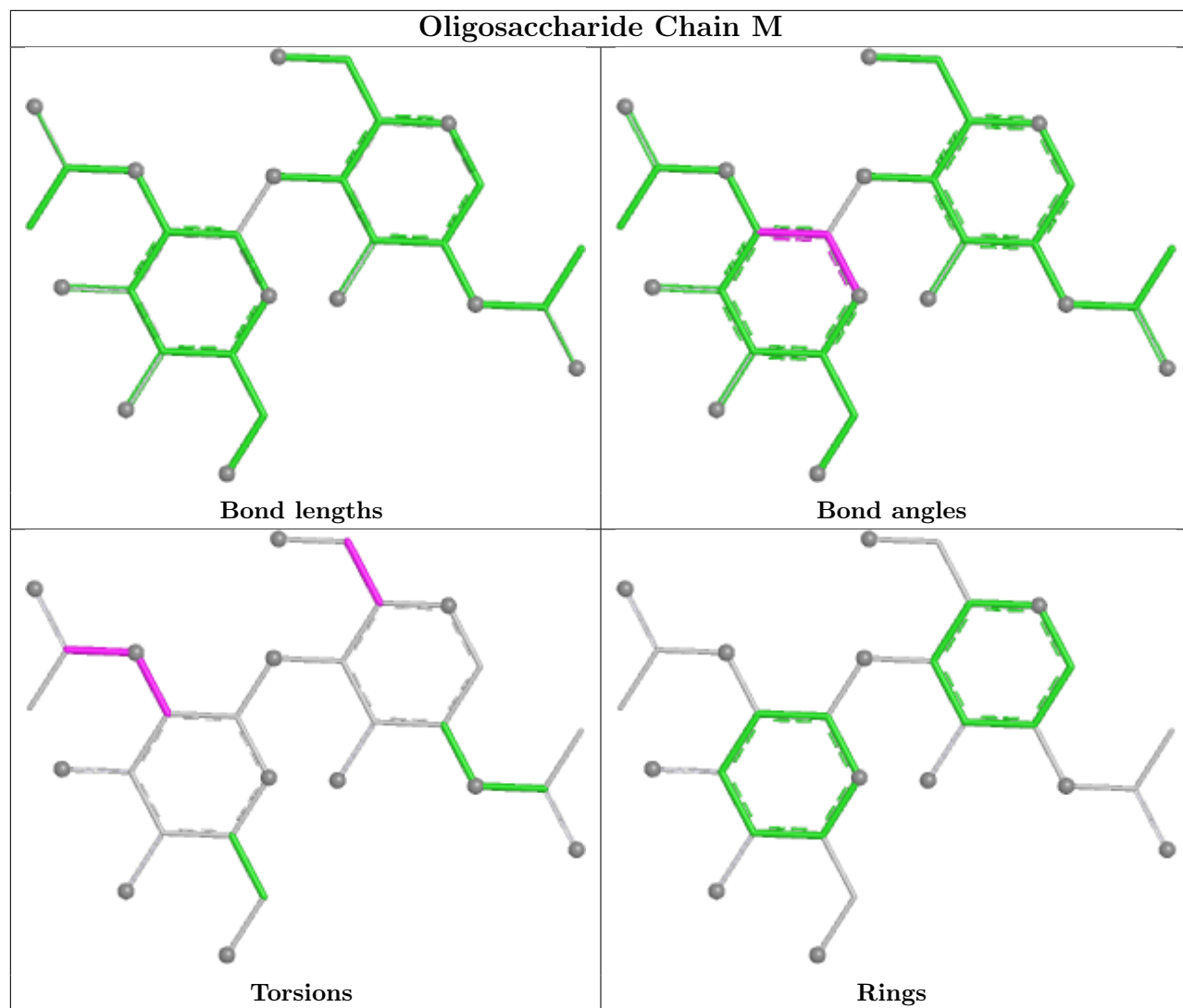


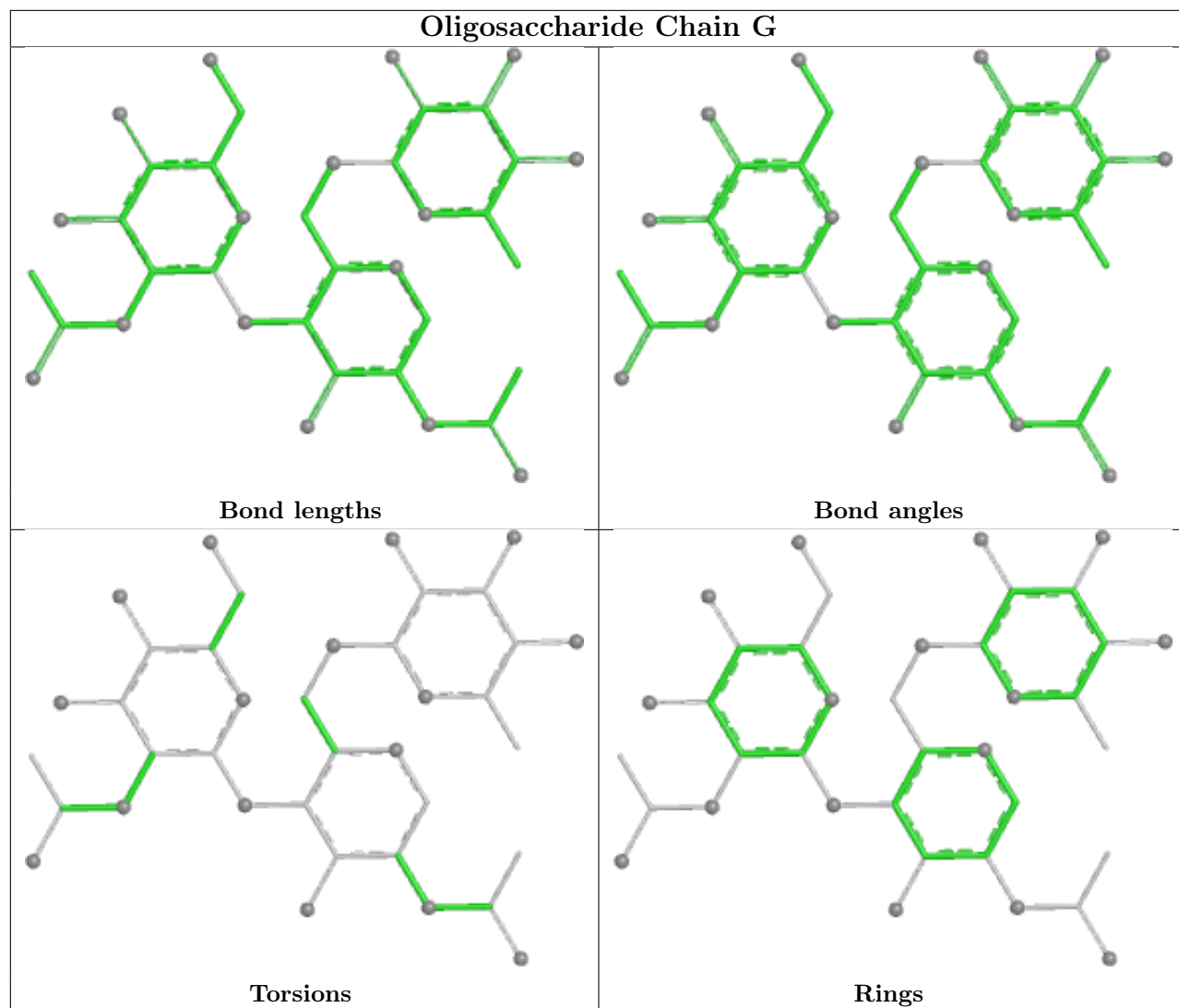


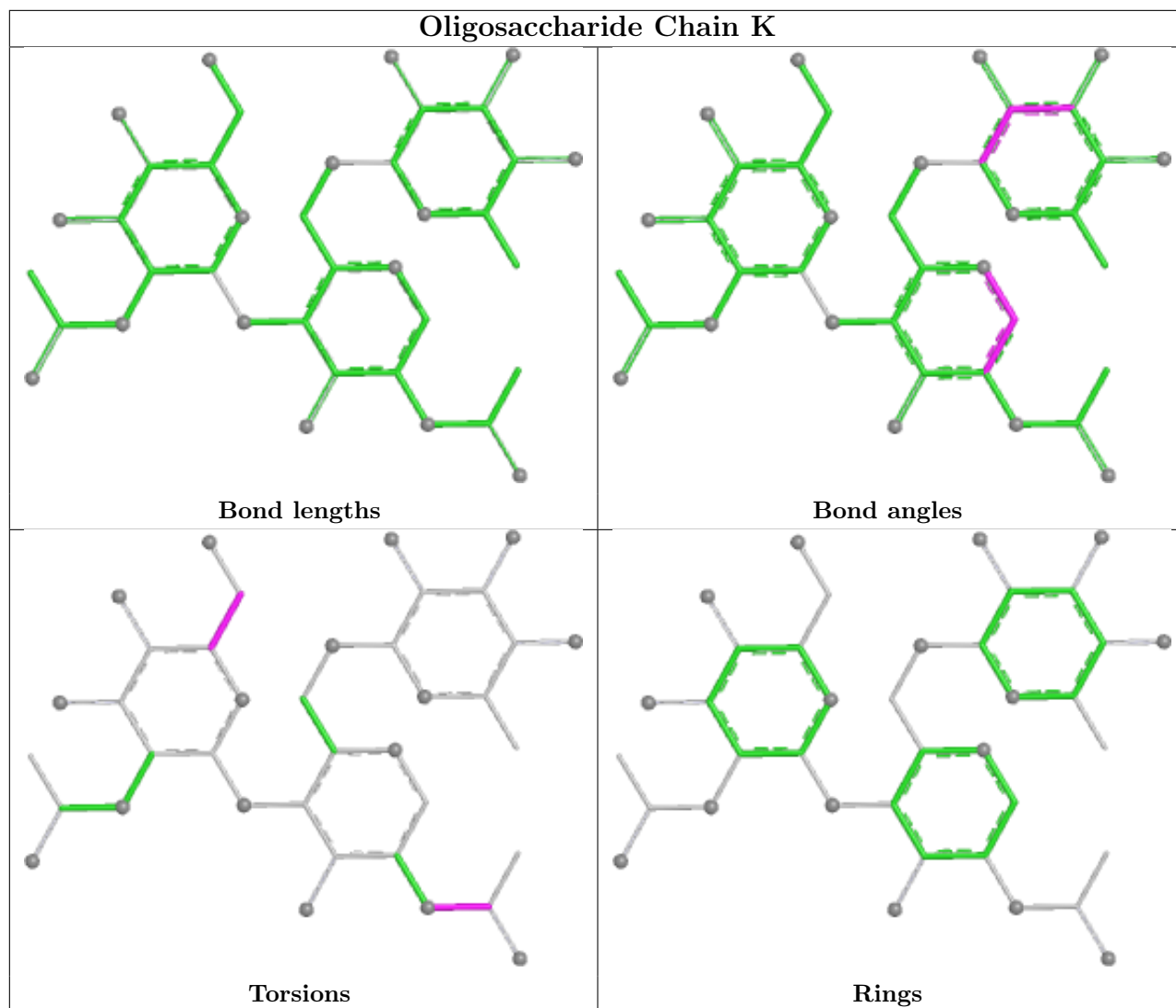












## 5.6 Ligand geometry [i](#)

2 ligands are modelled in this entry.

In the following table, the Counts columns list the number of bonds (or angles) for which Mogul statistics could be retrieved, the number of bonds (or angles) that are observed in the model and the number of bonds (or angles) that are defined in the Chemical Component Dictionary. The Link column lists molecule types, if any, to which the group is linked. The Z score for a bond length (or angle) is the number of standard deviations the observed value is removed from the expected value. A bond length (or angle) with  $|Z| > 2$  is considered an outlier worth inspection. RMSZ is the root-mean-square of all Z scores of the bond lengths (or angles).

Mol	Type	Chain	Res	Link	Bond lengths			Bond angles		
					Counts	RMSZ	$\# Z  > 2$	Counts	RMSZ	$\# Z  > 2$
5	NAG	A	1902	1	14,14,15	0.37	0	17,19,21	0.82	1 (5%)
5	NAG	A	1901	1	14,14,15	0.41	0	17,19,21	0.54	0

In the following table, the Chirals column lists the number of chiral outliers, the number of chiral centers analysed, the number of these observed in the model and the number defined in the Chemical Component Dictionary. Similar counts are reported in the Torsion and Rings columns. '-' means no outliers of that kind were identified.

Mol	Type	Chain	Res	Link	Chirals	Torsions	Rings
5	NAG	A	1902	1	-	2/6/23/26	0/1/1/1
5	NAG	A	1901	1	-	2/6/23/26	0/1/1/1

There are no bond length outliers.

All (1) bond angle outliers are listed below:

Mol	Chain	Res	Type	Atoms	Z	Observed(°)	Ideal(°)
5	A	1902	NAG	C2-N2-C7	2.16	125.80	122.90

There are no chirality outliers.

All (4) torsion outliers are listed below:

Mol	Chain	Res	Type	Atoms
5	A	1901	NAG	C8-C7-N2-C2
5	A	1901	NAG	O7-C7-N2-C2
5	A	1902	NAG	C1-C2-N2-C7
5	A	1902	NAG	C3-C2-N2-C7

There are no ring outliers.

1 monomer is involved in 1 short contact:

Mol	Chain	Res	Type	Clashes	Symm-Clashes
5	A	1901	NAG	1	0

## 5.7 Other polymers [i](#)

There are no such residues in this entry.

## 5.8 Polymer linkage issues [i](#)

There are no chain breaks in this entry.

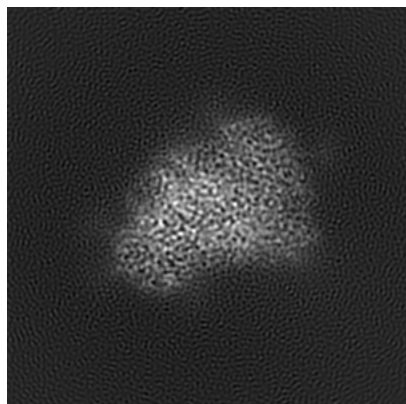
## 6 Map visualisation [i](#)

This section contains visualisations of the EMDB entry EMD-62653. These allow visual inspection of the internal detail of the map and identification of artifacts.

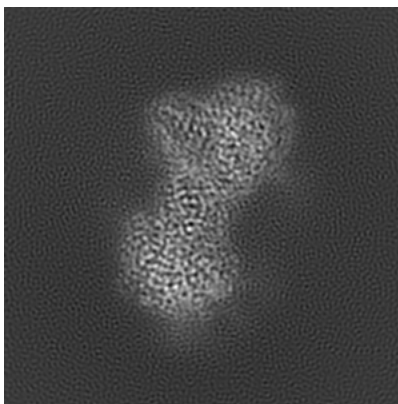
Images derived from a raw map, generated by summing the deposited half-maps, are presented below the corresponding image components of the primary map to allow further visual inspection and comparison with those of the primary map.

### 6.1 Orthogonal projections [i](#)

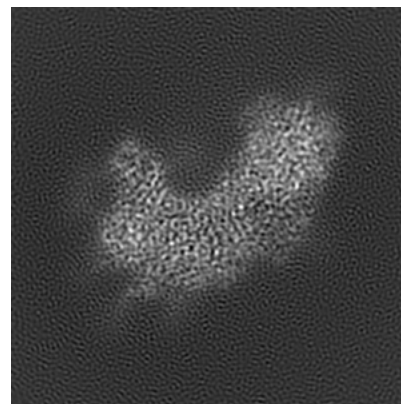
#### 6.1.1 Primary map



X

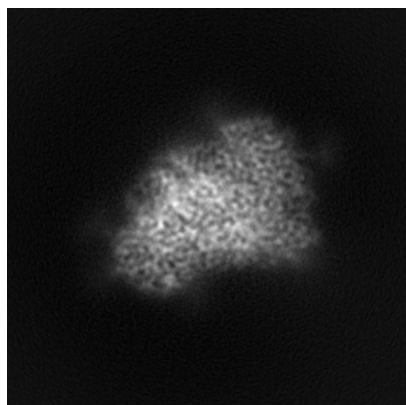


Y

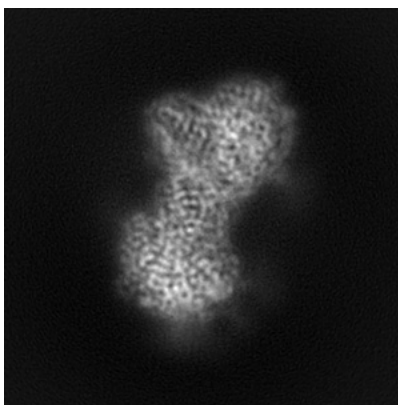


Z

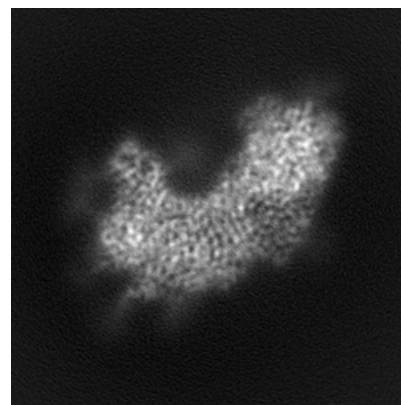
#### 6.1.2 Raw map



X



Y

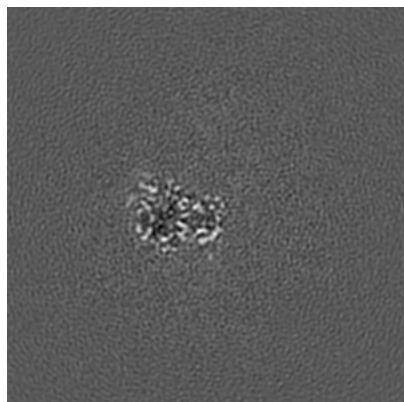


Z

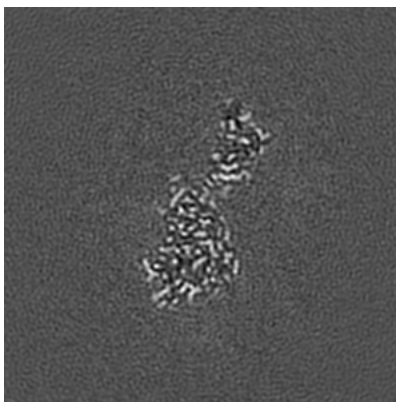
The images above show the map projected in three orthogonal directions.

## 6.2 Central slices [i](#)

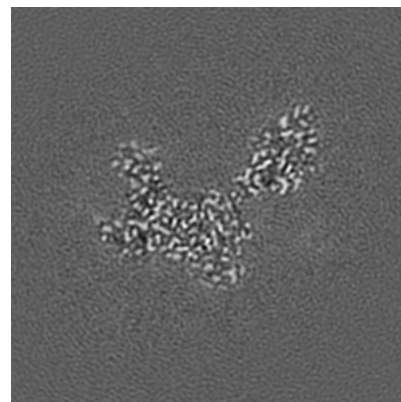
### 6.2.1 Primary map



X Index: 121

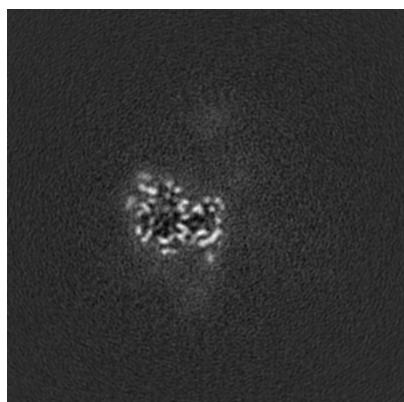


Y Index: 121

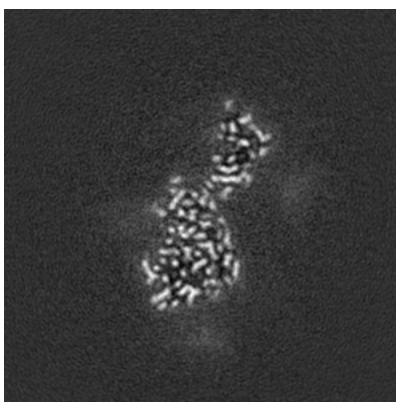


Z Index: 121

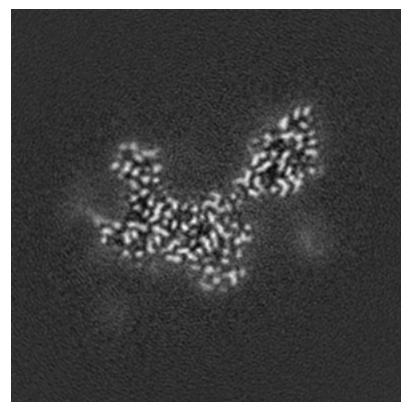
### 6.2.2 Raw map



X Index: 121



Y Index: 121

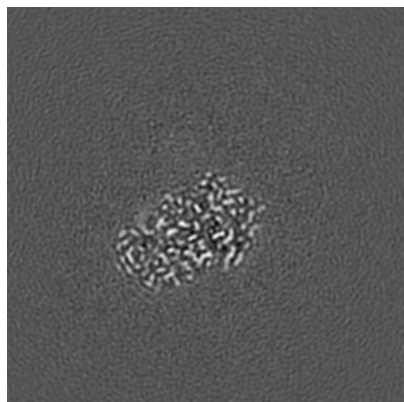


Z Index: 121

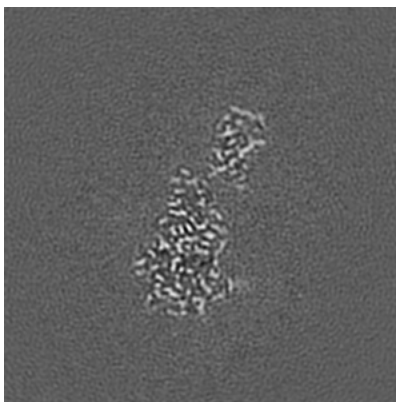
The images above show central slices of the map in three orthogonal directions.

## 6.3 Largest variance slices [i](#)

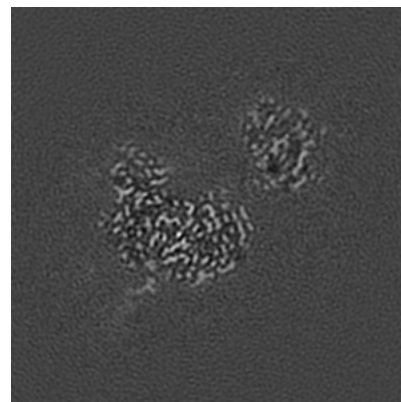
### 6.3.1 Primary map



X Index: 85

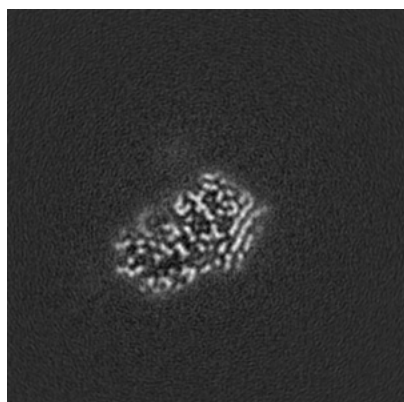


Y Index: 112

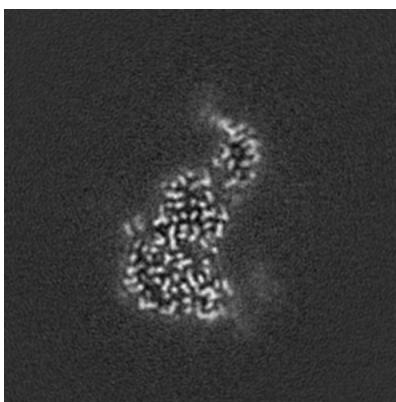


Z Index: 106

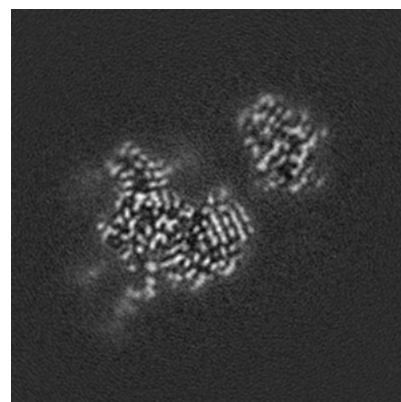
### 6.3.2 Raw map



X Index: 87



Y Index: 101

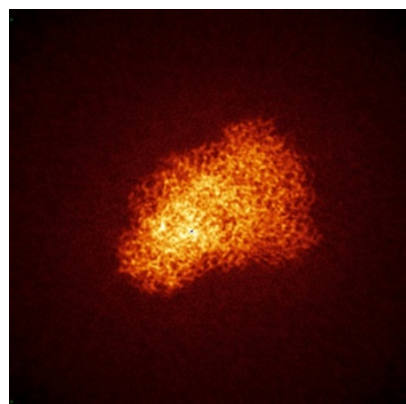


Z Index: 105

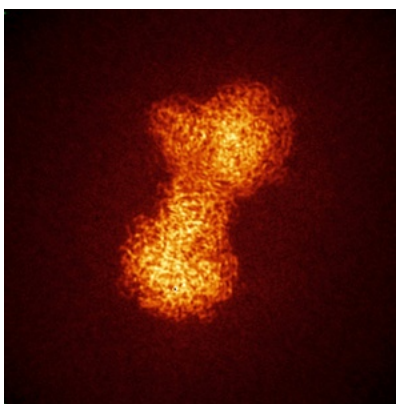
The images above show the largest variance slices of the map in three orthogonal directions.

## 6.4 Orthogonal standard-deviation projections (False-color) [i](#)

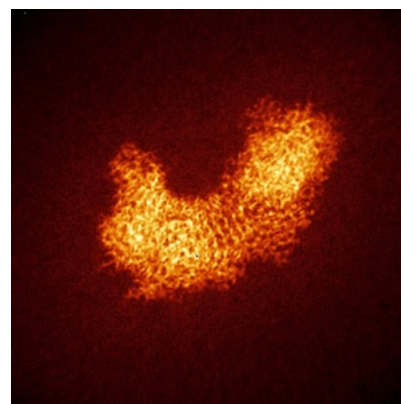
### 6.4.1 Primary map



X

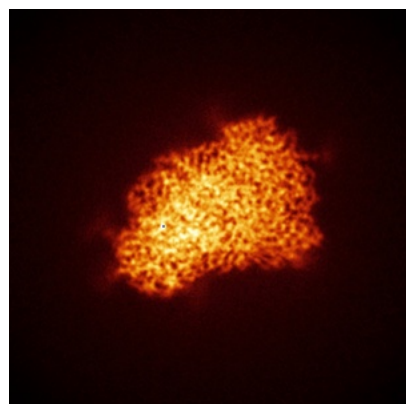


Y

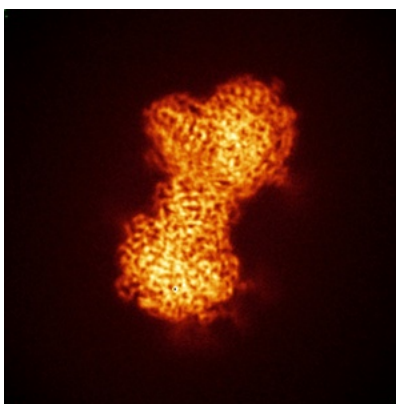


Z

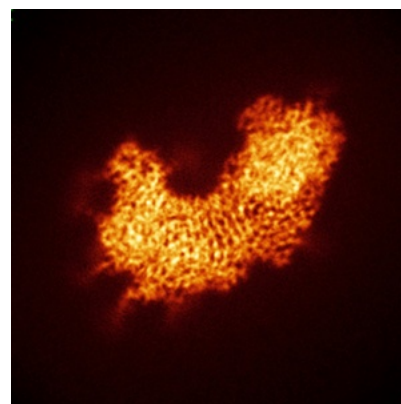
### 6.4.2 Raw map



X



Y



Z

The images above show the map standard deviation projections with false color in three orthogonal directions. Minimum values are shown in green, max in blue, and dark to light orange shades represent small to large values respectively.

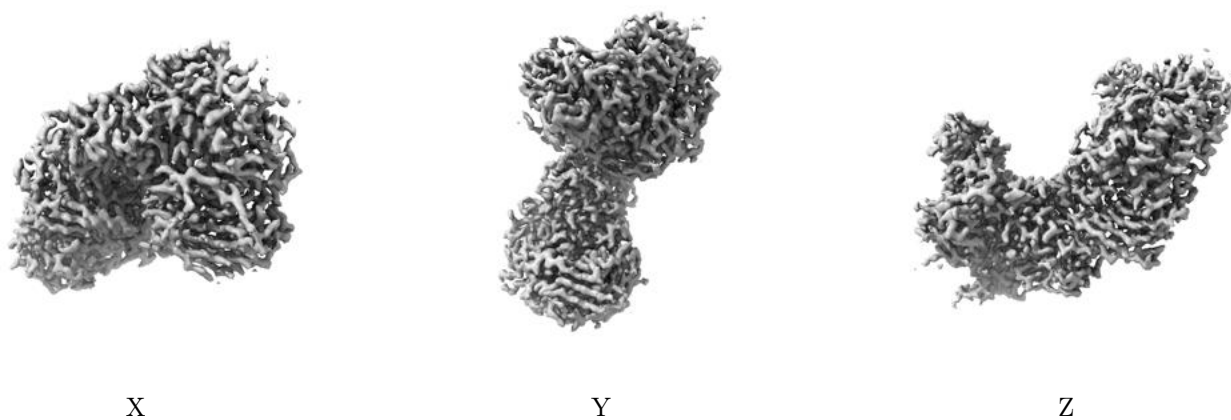
## 6.5 Orthogonal surface views [i](#)

### 6.5.1 Primary map



The images above show the 3D surface view of the map at the recommended contour level 0.015. These images, in conjunction with the slice images, may facilitate assessment of whether an appropriate contour level has been provided.

### 6.5.2 Raw map



These images show the 3D surface of the raw map. The raw map's contour level was selected so that its surface encloses the same volume as the primary map does at its recommended contour level.

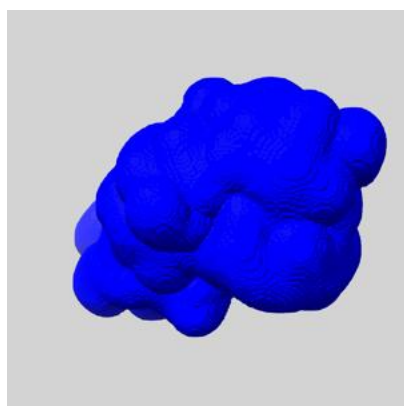
## 6.6 Mask visualisation [i](#)

This section shows the 3D surface view of the primary map at 50% transparency overlaid with the specified mask at 0% transparency

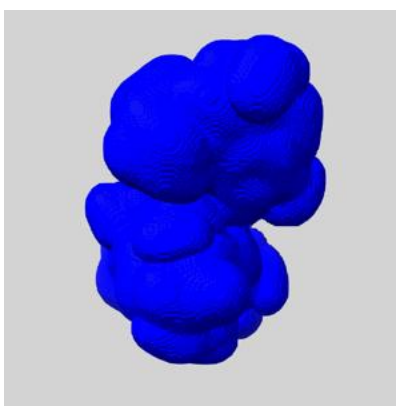
A mask typically either:

- Encompasses the whole structure
- Separates out a domain, a functional unit, a monomer or an area of interest from a larger structure

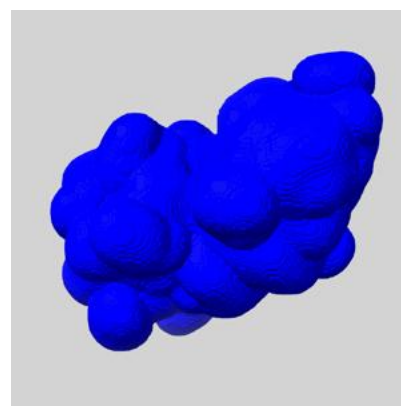
### 6.6.1 emd\_62653\_msk\_1.map [i](#)



X



Y

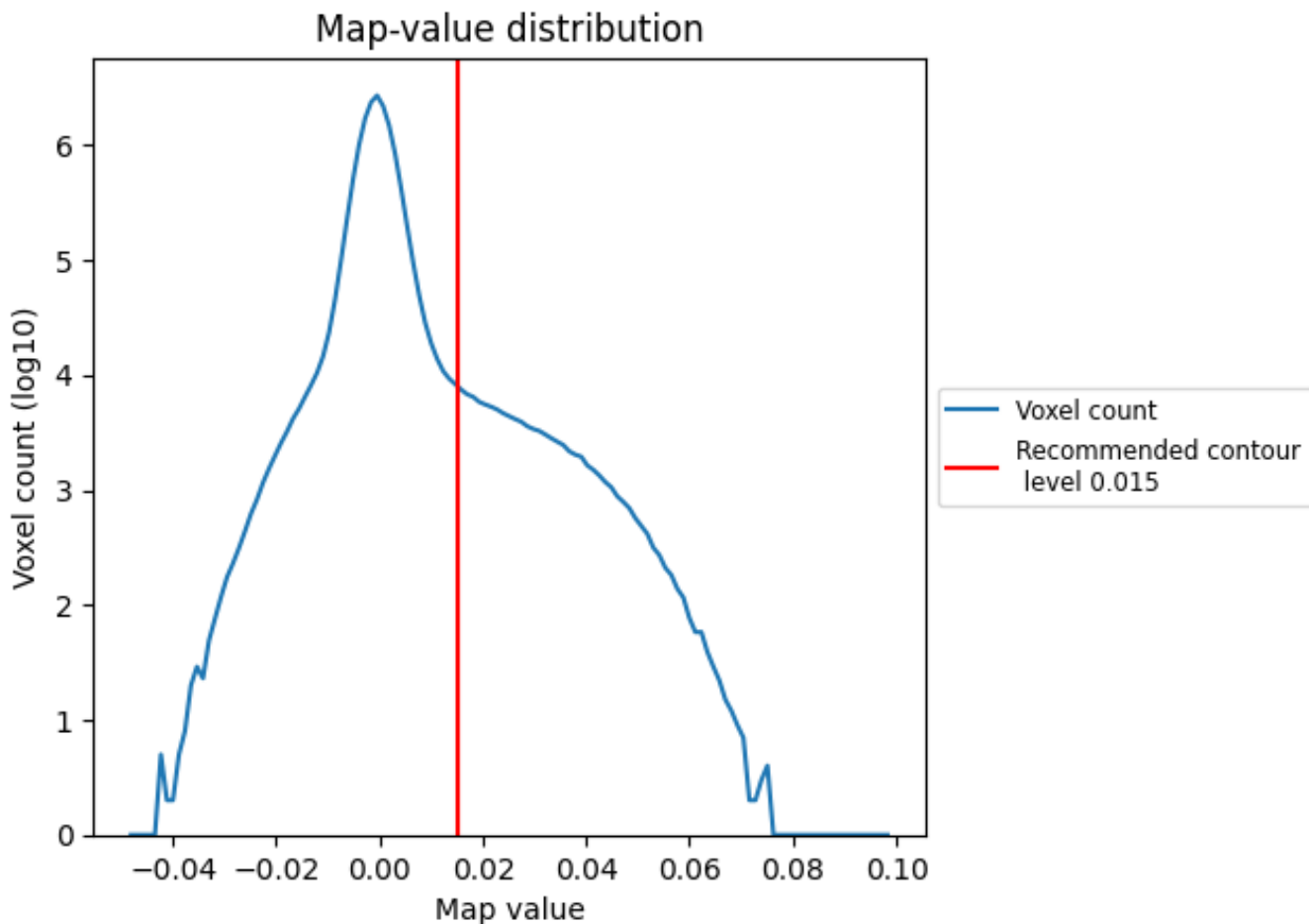


Z

## 7 Map analysis [i](#)

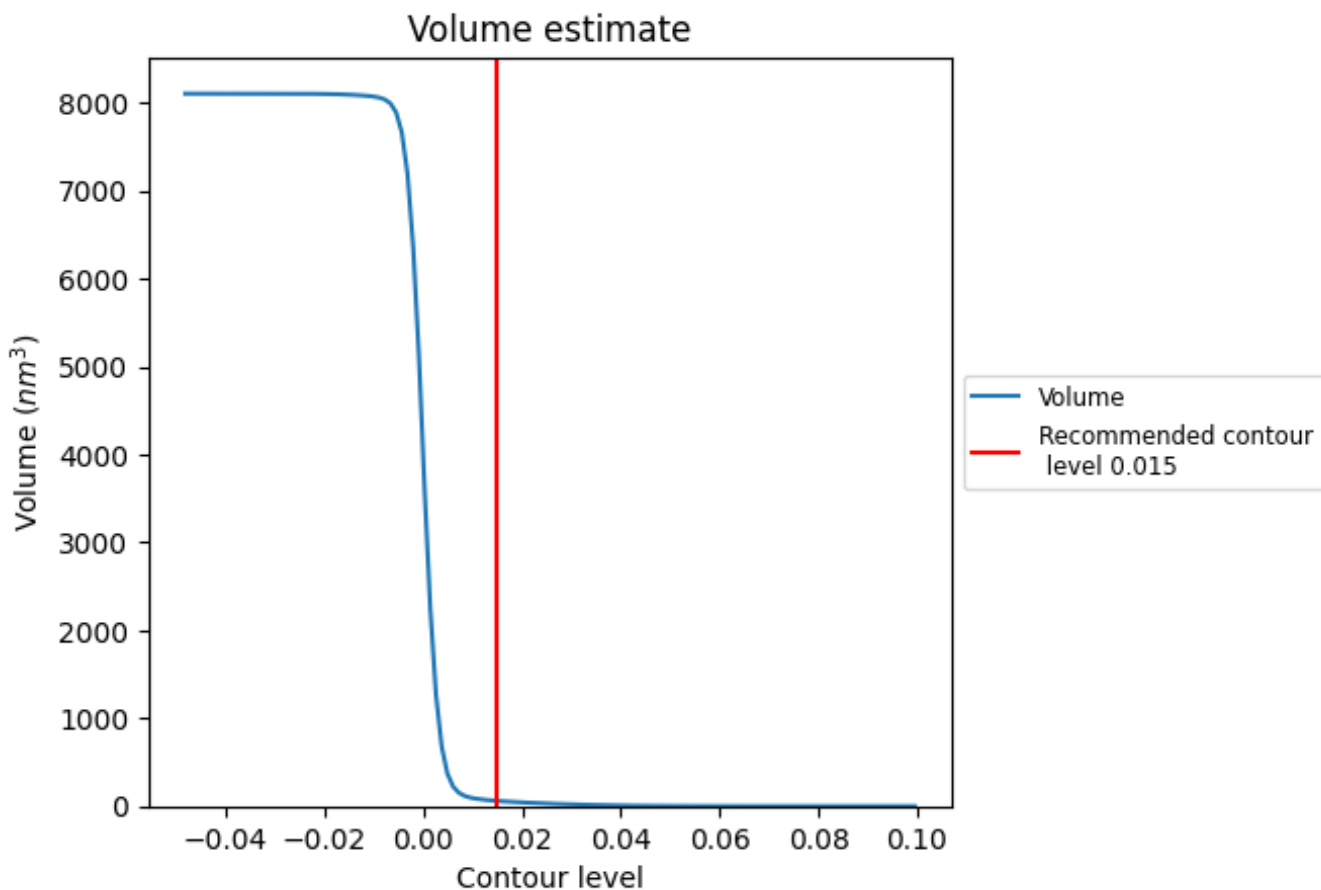
This section contains the results of statistical analysis of the map.

### 7.1 Map-value distribution [i](#)



The map-value distribution is plotted in 128 intervals along the x-axis. The y-axis is logarithmic. A spike in this graph at zero usually indicates that the volume has been masked.

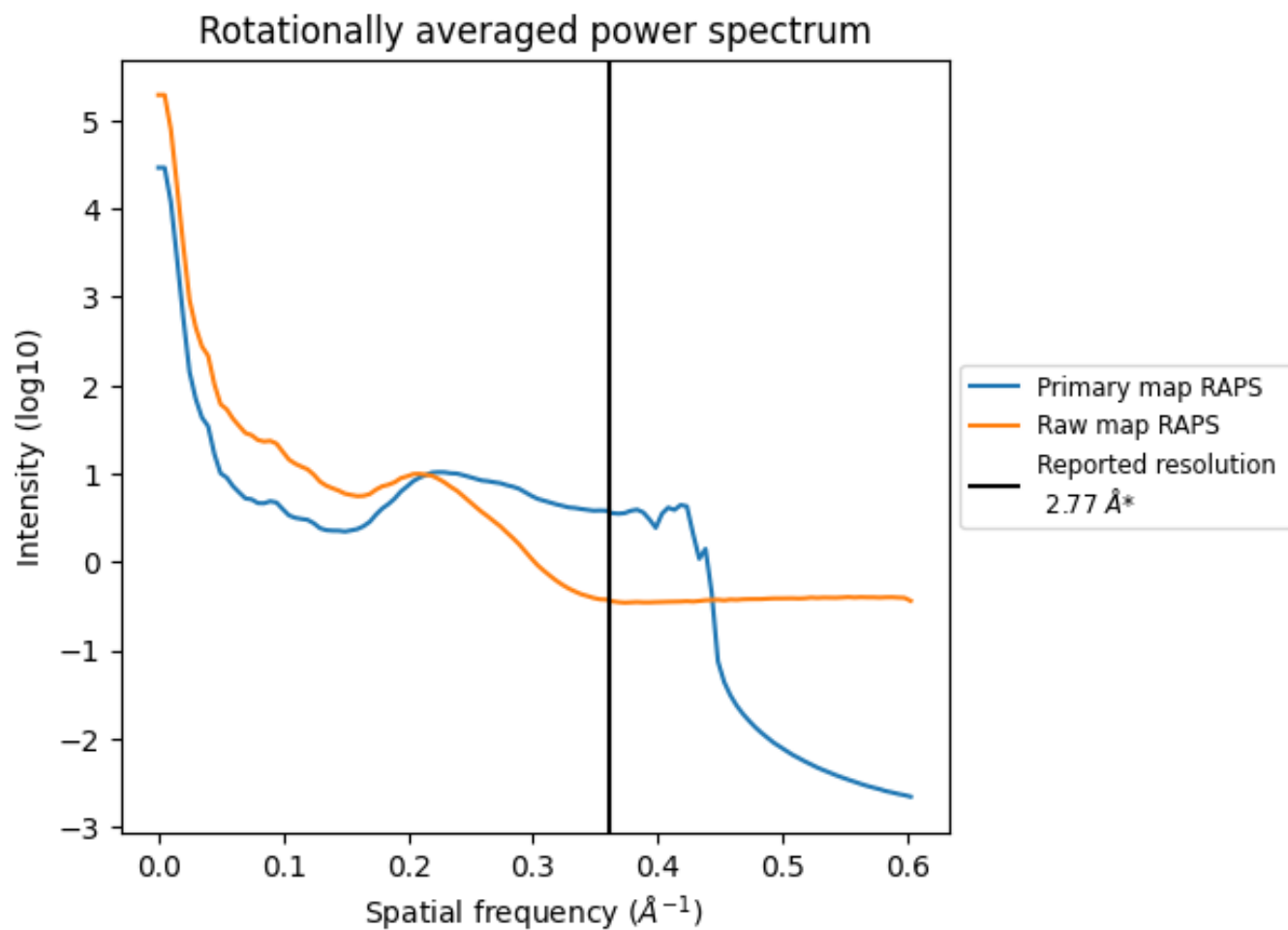
## 7.2 Volume estimate [i](#)



The volume at the recommended contour level is  $60 \text{ nm}^3$ ; this corresponds to an approximate mass of 54 kDa.

The volume estimate graph shows how the enclosed volume varies with the contour level. The recommended contour level is shown as a vertical line and the intersection between the line and the curve gives the volume of the enclosed surface at the given level.

### 7.3 Rotationally averaged power spectrum [i](#)

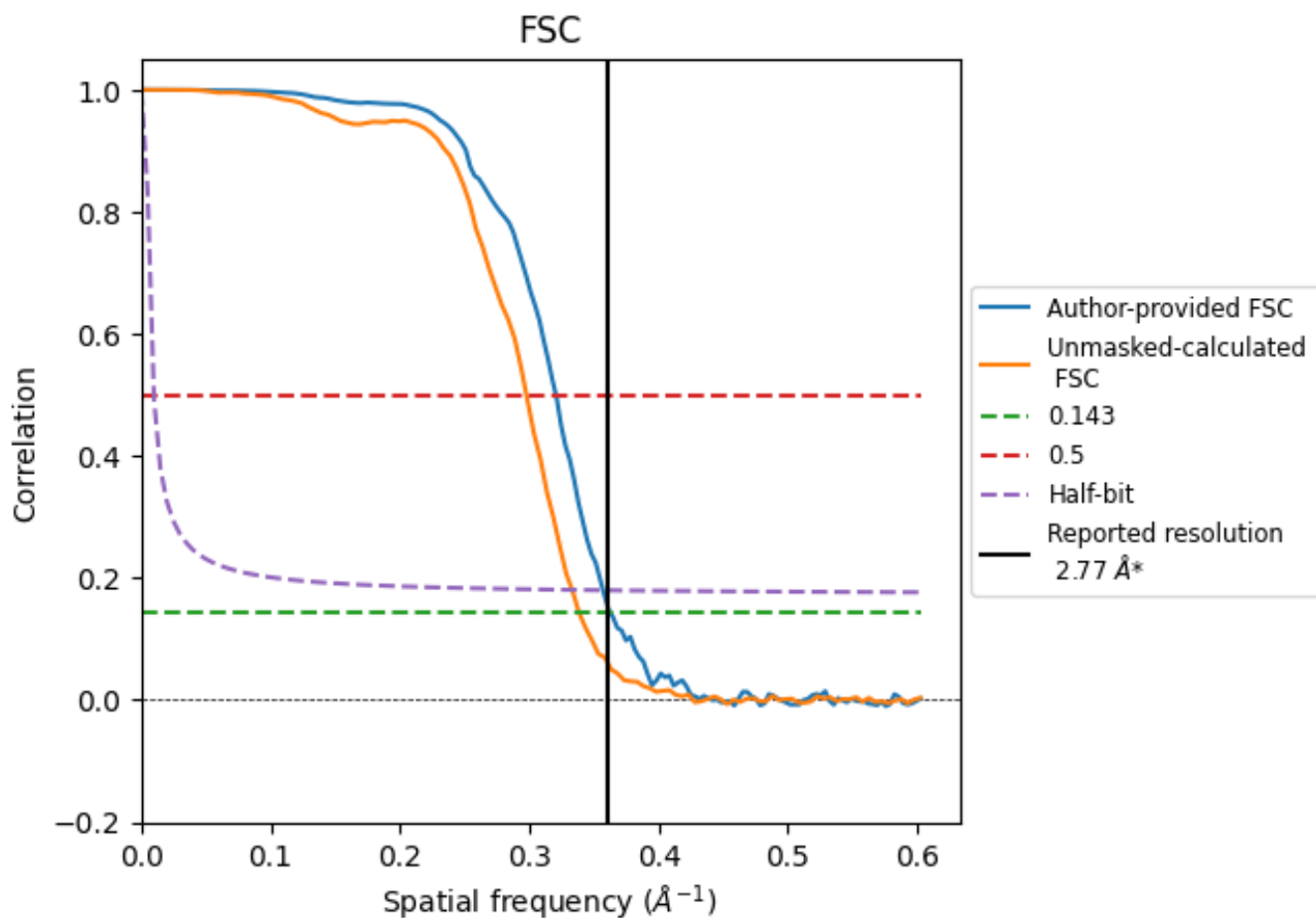


\*Reported resolution corresponds to spatial frequency of 0.361 Å<sup>-1</sup>

## 8 Fourier-Shell correlation [i](#)

Fourier-Shell Correlation (FSC) is the most commonly used method to estimate the resolution of single-particle and subtomogram-averaged maps. The shape of the curve depends on the imposed symmetry, mask and whether or not the two 3D reconstructions used were processed from a common reference. The reported resolution is shown as a black line. A curve is displayed for the half-bit criterion in addition to lines showing the 0.143 gold standard cut-off and 0.5 cut-off.

### 8.1 FSC [i](#)



\*Reported resolution corresponds to spatial frequency of 0.361 Å<sup>-1</sup>

## 8.2 Resolution estimates [i](#)

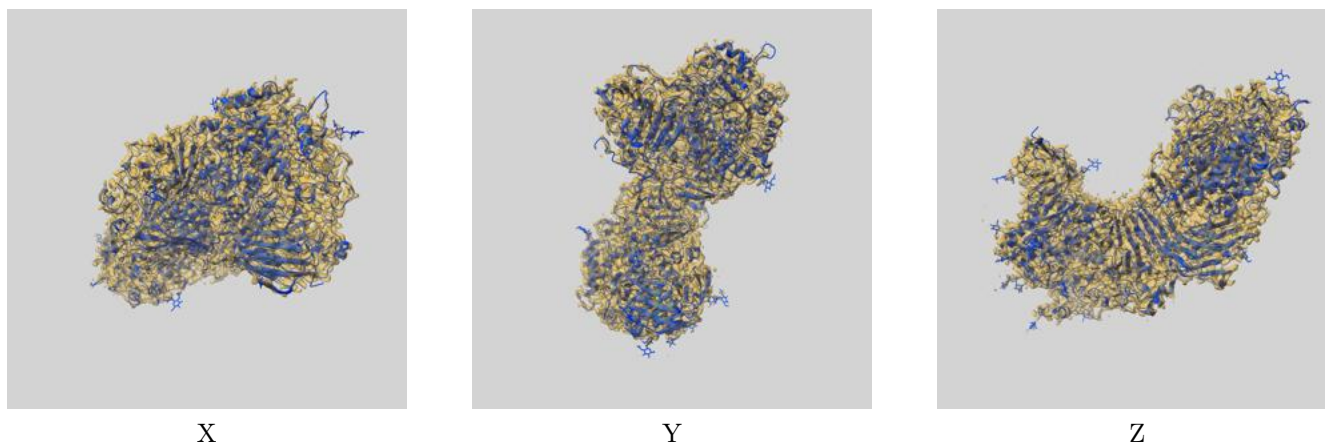
Resolution estimate (Å)	Estimation criterion (FSC cut-off)		
	0.143	0.5	Half-bit
Reported by author	2.77	-	-
Author-provided FSC curve	2.76	3.12	2.80
Unmasked-calculated*	2.95	3.36	3.00

\*Resolution estimate based on FSC curve calculated by comparison of deposited half-maps.

## 9 Map-model fit [i](#)

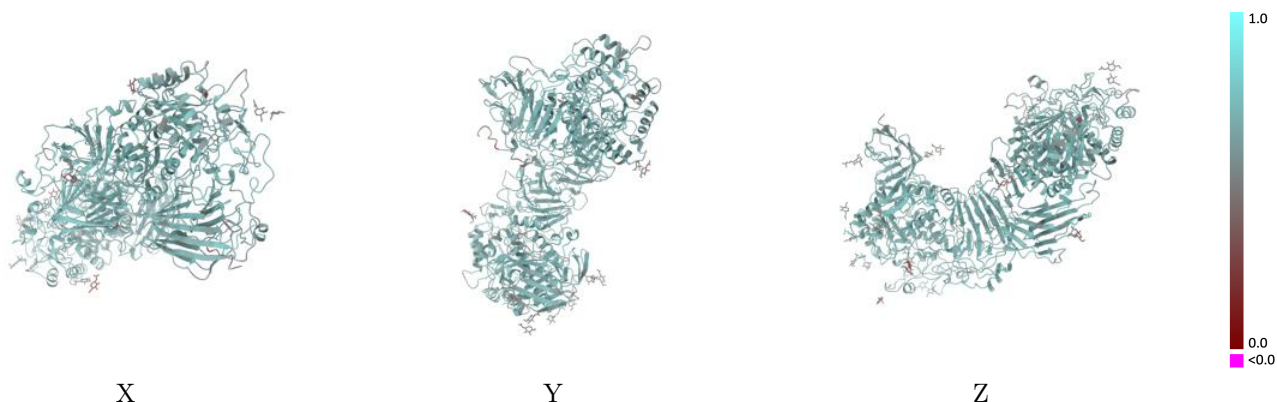
This section contains information regarding the fit between EMDB map EMD-62653 and PDB model 9KZ7. Per-residue inclusion information can be found in section 3 on page 6.

### 9.1 Map-model overlay [i](#)



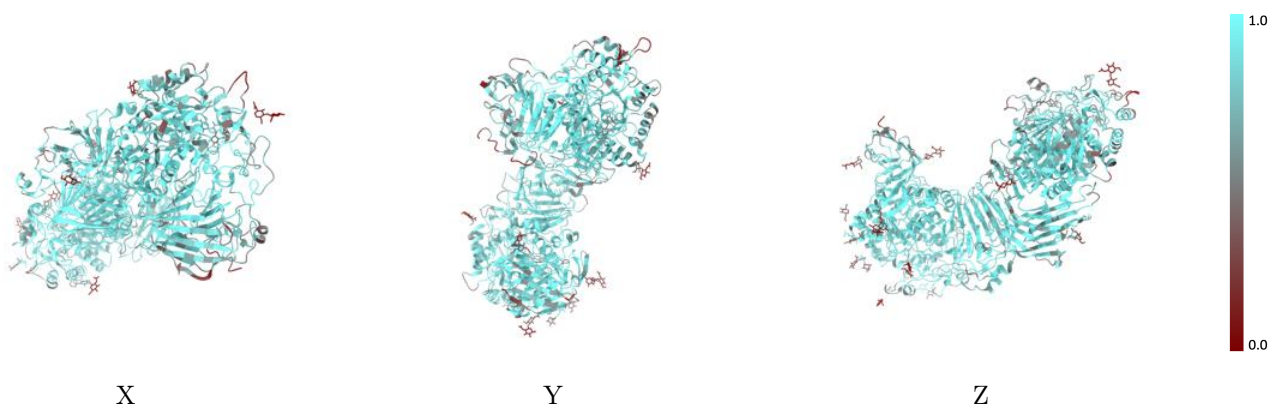
The images above show the 3D surface view of the map at the recommended contour level 0.015 at 50% transparency in yellow overlaid with a ribbon representation of the model coloured in blue. These images allow for the visual assessment of the quality of fit between the atomic model and the map.

## 9.2 Q-score mapped to coordinate model [i](#)



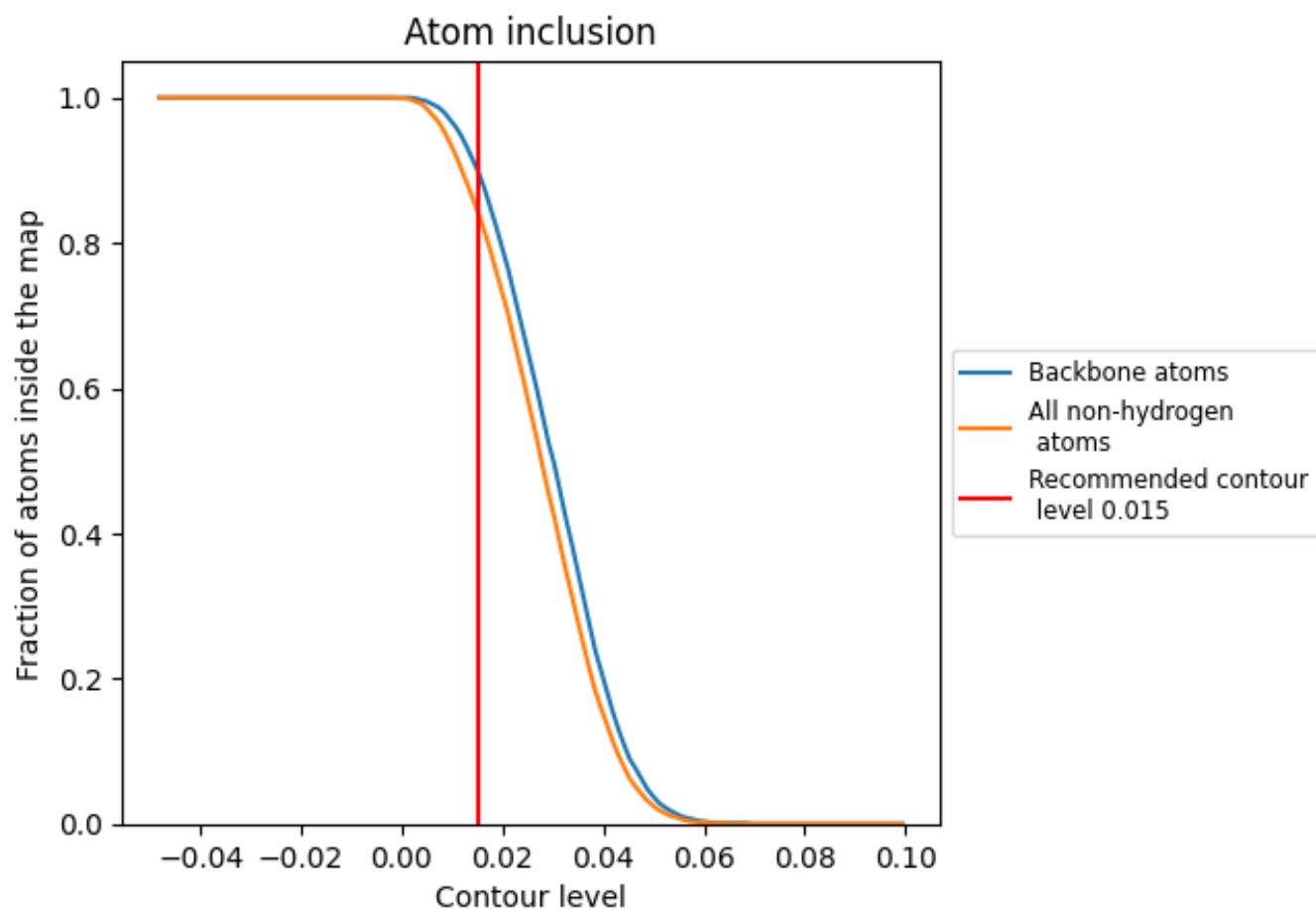
The images above show the model with each residue coloured according to its Q-score. This shows their resolvability in the map with higher Q-score values reflecting better resolvability. Please note: Q-score is calculating the resolvability of atoms, and thus high values are only expected at resolutions at which atoms can be resolved. Low Q-score values may therefore be expected for many entries.

## 9.3 Atom inclusion mapped to coordinate model [i](#)



The images above show the model with each residue coloured according to its atom inclusion. This shows to what extent they are inside the map at the recommended contour level (0.015).

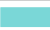

























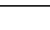
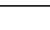
## 9.4 Atom inclusion [i](#)



At the recommended contour level, 90% of all backbone atoms, 84% of all non-hydrogen atoms, are inside the map.

## 9.5 Map-model fit summary

The table lists the average atom inclusion at the recommended contour level (0.015) and Q-score for the entire model and for each chain.

Chain	Atom inclusion	Q-score
All	 0.8440	 0.6540
A	 0.8580	 0.6590
B	 0.5820	 0.6170
C	 0.5270	 0.4850
D	 0.0710	 0.4820
E	 0.1790	 0.3980
F	 0.3210	 0.4110
G	 0.3950	 0.5480
H	 0.6790	 0.5800
I	 0.2860	 0.3880
J	 0.5710	 0.5590
K	 0.1050	 0.4800
L	 0.1430	 0.4660
M	 0.1790	 0.4370

