



Full wwPDB EM Validation Report ⓘ

Mar 25, 2026 – 11:28 AM UTC

PDB ID : 9KZ6 / pdb_00009kz6
EMDB ID : EMD-62652
Title : The cryo-EM structure of porcine serum MGAM
Authors : Tagami, T.; Kawasaki, M.; Adachi, N.
Deposited on : 2024-12-10
Resolution : 3.17 Å(reported)
Based on initial models : 3top, 2qmj

This is a Full wwPDB EM Validation Report for a publicly released PDB entry.

We welcome your comments at validation@mail.wwpdb.org

A user guide is available at

<https://www.wwpdb.org/validation/2017/EMValidationReportHelp>

with specific help available everywhere you see the ⓘ symbol.

The types of validation reports are described at

<http://www.wwpdb.org/validation/2017/FAQs#types>.

The following versions of software and data (see [references ⓘ](#)) were used in the production of this report:

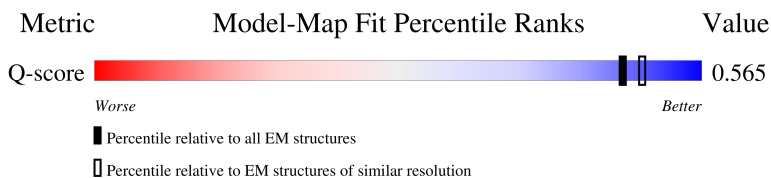
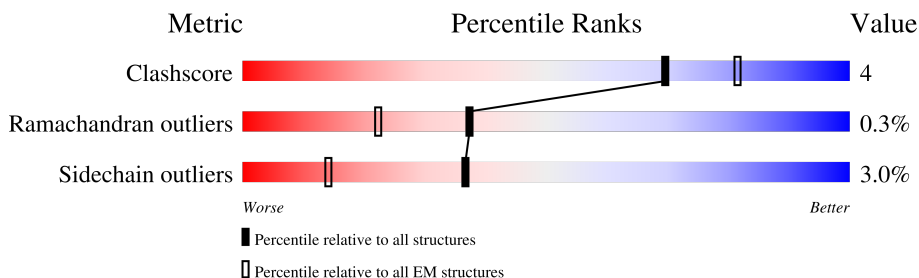
EMDB validation analysis : 0.0.1.dev132
Mogul : 2022.3.0, CSD as543be (2022)
MolProbity : 4-5-2 with Phenix2.0
Percentile statistics : 20250101.v01 (using entries in the PDB archive January 1st 2025)
EM percentile statistics : 202505.v01 (Using data in the EMDB archive up until May 2025)
MapQ : 1.9.13
Ideal geometry (proteins) : Engh & Huber (2001)
Ideal geometry (DNA, RNA) : Parkinson et al. (1996)
Validation Pipeline (wwPDB-VP) : 2.49

1 Overall quality at a glance

The following experimental techniques were used to determine the structure:
ELECTRON MICROSCOPY

The reported resolution of this entry is 3.17 Å.

Percentile scores (ranging between 0-100) for global validation metrics of the entry are shown in the following graphic. The table shows the number of entries on which the scores are based.



Metric	Whole archive (#Entries)	EM structures (#Entries)	Similar EM resolution (#Entries, resolution range(Å))
Clashscore	229148	23984	-
Ramachandran outliers	224038	23583	-
Sidechain outliers	223484	23102	-
Q-score	-	25397	14465 (2.67 - 3.67)

The table below summarises the geometric issues observed across the polymeric chains and their fit to the map. The red, orange, yellow and green segments of the bar indicate the fraction of residues that contain outliers for ≥ 3 , 2, 1 and 0 types of geometric quality criteria respectively. A grey segment represents the fraction of residues that are not modelled. The numeric value for each fraction is indicated below the corresponding segment, with a dot representing fractions $\leq 5\%$. The upper red bar (where present) indicates the fraction of residues that have poor fit to the EM map (all-atom inclusion $< 40\%$). The numeric value is given above the bar.

Mol	Chain	Length	Quality of chain
1	A	1795	<p>5% (red), 87% (green), 11% (yellow), .. (grey)</p>
2	B	2	<p>50% (red), 100% (yellow)</p>
2	D	2	<p>50% (red), 100% (yellow)</p>
2	E	2	<p>50% (red), 50% (red)</p>

Continued on next page...

Continued from previous page...

Mol	Chain	Length	Quality of chain
2	F	2	 50% 100%
2	G	2	 100%
2	H	2	 50% 50%
2	I	2	 100%
2	J	2	 100% 50% 50%
2	K	2	 100%
2	L	2	 100%
3	C	3	 67% 33% 33% 33%

2 Entry composition [i](#)

There are 4 unique types of molecules in this entry. The entry contains 14536 atoms, of which 0 are hydrogens and 0 are deuteriums.

In the tables below, the AltConf column contains the number of residues with at least one atom in alternate conformation and the Trace column contains the number of residues modelled with at most 2 atoms.

- Molecule 1 is a protein called Maltase-glucoamylase.

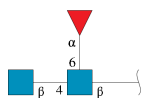
Mol	Chain	Residues	Atoms					AltConf	Trace
			Total	C	N	O	S		
1	A	1771	14204	9093	2368	2686	57	0	0

- Molecule 2 is an oligosaccharide called 2-acetamido-2-deoxy-beta-D-glucopyranose-(1-4)-2-acetamido-2-deoxy-beta-D-glucopyranose.



Mol	Chain	Residues	Atoms				AltConf	Trace
			Total	C	N	O		
2	B	2	28	16	2	10	0	0
2	D	2	28	16	2	10	0	0
2	E	2	28	16	2	10	0	0
2	F	2	28	16	2	10	0	0
2	G	2	28	16	2	10	0	0
2	H	2	28	16	2	10	0	0
2	I	2	28	16	2	10	0	0
2	J	2	28	16	2	10	0	0
2	K	2	28	16	2	10	0	0
2	L	2	28	16	2	10	0	0

- Molecule 3 is an oligosaccharide called 2-acetamido-2-deoxy-beta-D-glucopyranose-(1-4)-[alpha-L-fucopyranose-(1-6)]2-acetamido-2-deoxy-beta-D-glucopyranose.



Mol	Chain	Residues	Atoms			AltConf	Trace	
			Total	C	N			O
3	C	3	38	22	2	14	0	0

- Molecule 4 is 2-acetamido-2-deoxy-beta-D-glucopyranose (CCD ID: NAG) (formula: $C_8H_{15}NO_6$).

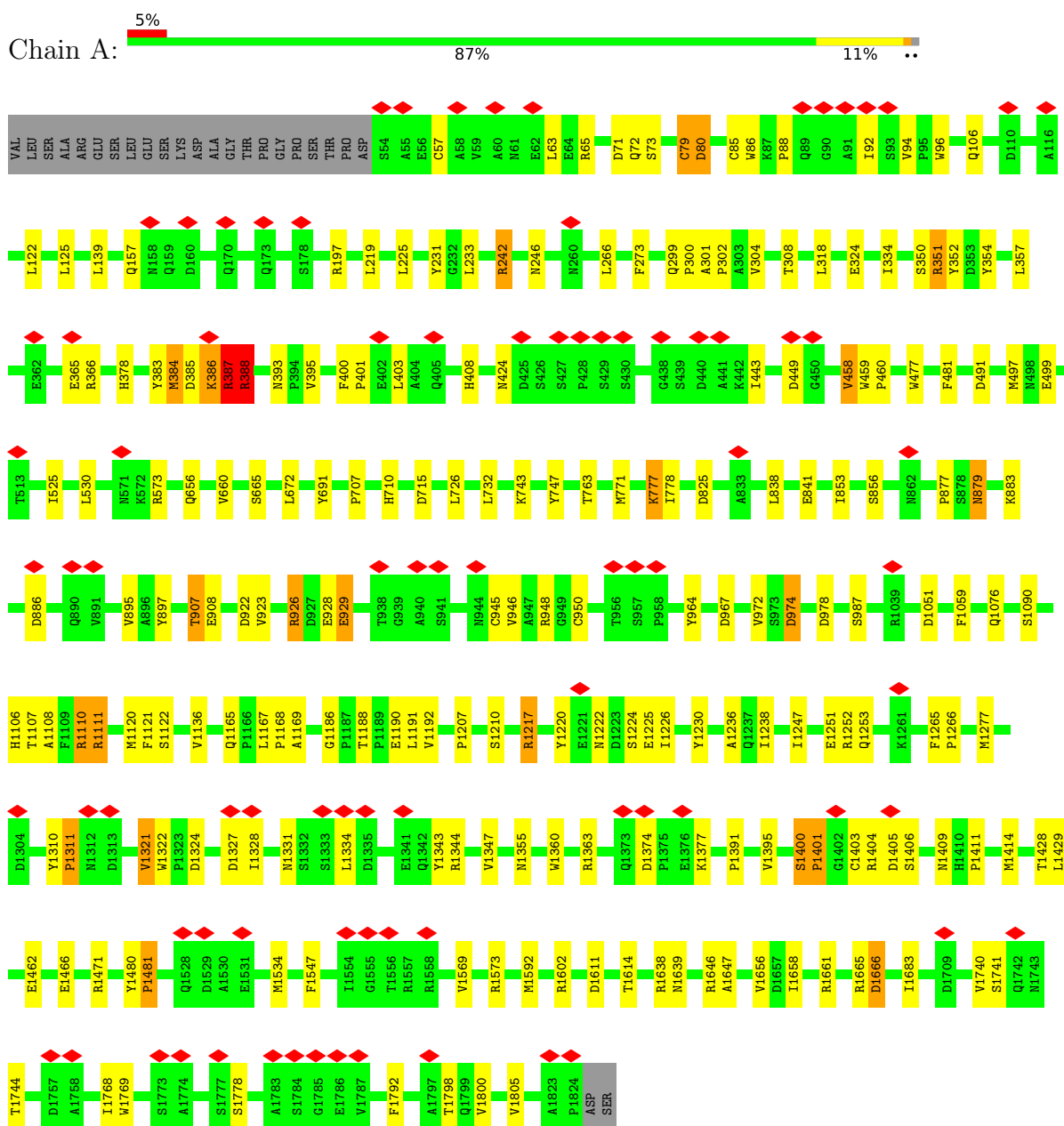


Mol	Chain	Residues	Atoms			AltConf	
			Total	C	N		O
4	A	1	14	8	1	5	0

3 Residue-property plots i

These plots are drawn for all protein, RNA, DNA and oligosaccharide chains in the entry. The first graphic for a chain summarises the proportions of the various outlier classes displayed in the second graphic. The second graphic shows the sequence view annotated by issues in geometry and atom inclusion in map density. Residues are color-coded according to the number of geometric quality criteria for which they contain at least one outlier: green = 0, yellow = 1, orange = 2 and red = 3 or more. A red diamond above a residue indicates a poor fit to the EM map for this residue (all-atom inclusion < 40%). Stretches of 2 or more consecutive residues without any outlier are shown as a green connector. Residues present in the sample, but not in the model, are shown in grey.

• Molecule 1: Maltase-glucoamylase



- Molecule 2: 2-acetamido-2-deoxy-beta-D-glucopyranose-(1-4)-2-acetamido-2-deoxy-beta-D-glucopyranose



- Molecule 2: 2-acetamido-2-deoxy-beta-D-glucopyranose-(1-4)-2-acetamido-2-deoxy-beta-D-glucopyranose



- Molecule 2: 2-acetamido-2-deoxy-beta-D-glucopyranose-(1-4)-2-acetamido-2-deoxy-beta-D-glucopyranose



- Molecule 2: 2-acetamido-2-deoxy-beta-D-glucopyranose-(1-4)-2-acetamido-2-deoxy-beta-D-glucopyranose



- Molecule 2: 2-acetamido-2-deoxy-beta-D-glucopyranose-(1-4)-2-acetamido-2-deoxy-beta-D-glucopyranose



- Molecule 2: 2-acetamido-2-deoxy-beta-D-glucopyranose-(1-4)-2-acetamido-2-deoxy-beta-D-glucopyranose





- Molecule 2: 2-acetamido-2-deoxy-beta-D-glucopyranose-(1-4)-2-acetamido-2-deoxy-beta-D-glucopyranose



- Molecule 2: 2-acetamido-2-deoxy-beta-D-glucopyranose-(1-4)-2-acetamido-2-deoxy-beta-D-glucopyranose



- Molecule 2: 2-acetamido-2-deoxy-beta-D-glucopyranose-(1-4)-2-acetamido-2-deoxy-beta-D-glucopyranose



- Molecule 2: 2-acetamido-2-deoxy-beta-D-glucopyranose-(1-4)-2-acetamido-2-deoxy-beta-D-glucopyranose



- Molecule 3: 2-acetamido-2-deoxy-beta-D-glucopyranose-(1-4)-[alpha-L-fucopyranose-(1-6)]2-acetamido-2-deoxy-beta-D-glucopyranose



4 Experimental information

Property	Value	Source
EM reconstruction method	SINGLE PARTICLE	Depositor
Imposed symmetry	POINT, C1	Depositor
Number of particles used	79313	Depositor
Resolution determination method	FSC 0.143 CUT-OFF	Depositor
CTF correction method	PHASE FLIPPING AND AMPLITUDE CORRECTION	Depositor
Microscope	FEI TALOS ARCTICA	Depositor
Voltage (kV)	200	Depositor
Electron dose ($e^-/\text{\AA}^2$)	50	Depositor
Minimum defocus (nm)	1000	Depositor
Maximum defocus (nm)	2500	Depositor
Magnification	120000	Depositor
Image detector	FEI FALCON III (4k x 4k)	Depositor
Maximum map value	0.260	Depositor
Minimum map value	-0.139	Depositor
Average map value	0.001	Depositor
Map value standard deviation	0.014	Depositor
Recommended contour level	0.055	Depositor
Map size (Å)	228.8, 228.8, 228.8	wwPDB
Map dimensions	260, 260, 260	wwPDB
Map angles (°)	90.0, 90.0, 90.0	wwPDB
Pixel spacing (Å)	0.88, 0.88, 0.88	Depositor

5 Model quality [i](#)

5.1 Standard geometry [i](#)

Bond lengths and bond angles in the following residue types are not validated in this section: NAG, FUC

The Z score for a bond length (or angle) is the number of standard deviations the observed value is removed from the expected value. A bond length (or angle) with $|Z| > 5$ is considered an outlier worth inspection. RMSZ is the root-mean-square of all Z scores of the bond lengths (or angles).

Mol	Chain	Bond lengths		Bond angles	
		RMSZ	# Z >5	RMSZ	# Z >5
1	A	0.82	2/14626 (0.0%)	1.07	18/19957 (0.1%)

Chiral center outliers are detected by calculating the chiral volume of a chiral center and verifying if the center is modelled as a planar moiety or with the opposite hand. A planarity outlier is detected by checking planarity of atoms in a peptide group, atoms in a mainchain group or atoms of a sidechain that are expected to be planar.

Mol	Chain	#Chirality outliers	#Planarity outliers
1	A	0	18

All (2) bond length outliers are listed below:

Mol	Chain	Res	Type	Atoms	Z	Observed(Å)	Ideal(Å)
1	A	122	LEU	C-N	-6.72	1.24	1.33
1	A	231	TYR	C-O	-5.23	1.17	1.23

All (18) bond angle outliers are listed below:

Mol	Chain	Res	Type	Atoms	Z	Observed(°)	Ideal(°)
1	A	1226	ILE	N-CA-C	-6.44	104.22	110.72
1	A	897	TYR	N-CA-CB	-6.04	100.54	110.68
1	A	231	TYR	CA-C-O	-6.01	113.75	120.66
1	A	231	TYR	N-CA-CB	-5.95	100.24	111.00
1	A	1792	PHE	CA-CB-CG	5.89	119.69	113.80
1	A	324	GLU	CB-CG-CD	5.70	122.28	112.60
1	A	449	ASP	CA-CB-CG	5.53	118.13	112.60
1	A	1222	ASN	CA-CB-CG	5.53	118.13	112.60
1	A	841	GLU	CB-CA-C	5.50	118.66	110.62
1	A	1547	PHE	CA-CB-CG	5.43	119.23	113.80
1	A	967	ASP	CA-CB-CG	5.38	117.98	112.60

Continued on next page...

Continued from previous page...

Mol	Chain	Res	Type	Atoms	Z	Observed(°)	Ideal(°)
1	A	354	TYR	N-CA-C	-5.31	106.80	113.28
1	A	1355	ASN	CA-CB-CG	5.20	117.80	112.60
1	A	974	ASP	CA-CB-CG	5.15	117.75	112.60
1	A	1051	ASP	CA-CB-CG	5.09	117.69	112.60
1	A	1327	ASP	CA-CB-CG	5.09	117.69	112.60
1	A	922	ASP	CA-CB-CG	5.04	117.64	112.60
1	A	424	ASN	OD1-CG-ND2	5.02	127.62	122.60

There are no chirality outliers.

All (18) planarity outliers are listed below:

Mol	Chain	Res	Type	Group
1	A	1110	ARG	Sidechain
1	A	1111	ARG	Sidechain
1	A	1217	ARG	Sidechain
1	A	1344	ARG	Sidechain
1	A	1400	SER	Peptide
1	A	1404	ARG	Sidechain
1	A	1471	ARG	Sidechain
1	A	1602	ARG	Sidechain
1	A	1638	ARG	Sidechain
1	A	1646	ARG	Sidechain
1	A	1665	ARG	Sidechain
1	A	197	ARG	Sidechain
1	A	242	ARG	Sidechain
1	A	351	ARG	Sidechain
1	A	387	ARG	Sidechain
1	A	388	ARG	Sidechain
1	A	499	GLU	Peptide
1	A	926	ARG	Sidechain

5.2 Too-close contacts [\(i\)](#)

In the following table, the Non-H and H(model) columns list the number of non-hydrogen atoms and hydrogen atoms in the chain respectively. The H(added) column lists the number of hydrogen atoms added and optimized by MolProbity. The Clashes column lists the number of clashes within the asymmetric unit, whereas Symm-Clashes lists symmetry-related clashes.

Mol	Chain	Non-H	H(model)	H(added)	Clashes	Symm-Clashes
1	A	14204	0	13532	99	0
2	B	28	0	25	0	0

Continued on next page...

Continued from previous page...

Mol	Chain	Non-H	H(model)	H(added)	Clashes	Symm-Clashes
2	D	28	0	25	0	0
2	E	28	0	25	2	0
2	F	28	0	25	0	0
2	G	28	0	25	0	0
2	H	28	0	25	0	0
2	I	28	0	25	0	0
2	J	28	0	25	2	0
2	K	28	0	25	0	0
2	L	28	0	25	0	0
3	C	38	0	34	1	0
4	A	14	0	13	0	0
All	All	14536	0	13829	102	0

The all-atom clashscore is defined as the number of clashes found per 1000 atoms (including hydrogen atoms). The all-atom clashscore for this structure is 4.

All (102) close contacts within the same asymmetric unit are listed below, sorted by their clash magnitude.

Atom-1	Atom-2	Interatomic distance (Å)	Clash overlap (Å)
1:A:1639:ASN:HD22	2:J:1:NAG:H83	1.28	0.96
1:A:366:ARG:NH1	1:A:665:SER:OG	2.27	0.68
1:A:1374:ASP:HB3	1:A:1377:LYS:HE2	1.78	0.65
1:A:1238:ILE:HD11	1:A:1569:VAL:HG13	1.80	0.64
1:A:972:VAL:CG2	1:A:1059:PHE:HB2	2.30	0.62
1:A:1188:THR:HG22	1:A:1191:LEU:HB2	1.79	0.62
1:A:88:PRO:HA	1:A:96:TRP:CG	2.36	0.60
1:A:477:TRP:NE1	1:A:481:PHE:HE2	2.01	0.59
1:A:139:LEU:HB2	1:A:157:GLN:HG3	1.85	0.58
1:A:57:CYS:HG	1:A:85:CYS:HG	1.51	0.58
1:A:1265:PHE:HB3	1:A:1266:PRO:HD3	1.88	0.56
1:A:1331:ASN:HB3	1:A:1334:LEU:HD13	1.88	0.56
1:A:853:ILE:HG21	1:A:856:SER:HB3	1.88	0.56
1:A:1236:ALA:O	1:A:1573:ARG:NH1	2.39	0.56
2:E:1:NAG:C1	2:E:1:NAG:H82	2.36	0.56
1:A:525:ILE:HD13	1:A:530:LEU:HD23	1.89	0.55
1:A:106:GLN:HB3	1:A:125:LEU:HD21	1.90	0.53
1:A:225:LEU:HD11	1:A:304:VAL:HG23	1.90	0.53
1:A:385:ASP:HB3	1:A:393:ASN:HA	1.91	0.53
1:A:459:TRP:HB2	1:A:460:PRO:HD3	1.92	0.52
1:A:1321:VAL:HG23	1:A:1347:VAL:HG21	1.92	0.52
1:A:386:LYS:HB2	1:A:388:ARG:HE	1.75	0.52

Continued on next page...

Continued from previous page...

Atom-1	Atom-2	Interatomic distance (Å)	Clash overlap (Å)
1:A:1165:GLN:HB2	1:A:1169:ALA:HB3	1.92	0.52
1:A:385:ASP:HB2	1:A:386:LYS:HZ2	1.75	0.51
1:A:1186:GLY:HA2	1:A:1192:VAL:HG22	1.92	0.51
1:A:350:SER:HB2	1:A:378:HIS:HB2	1.93	0.51
1:A:477:TRP:CE2	1:A:481:PHE:HE2	2.28	0.51
1:A:301:ALA:N	1:A:302:PRO:HA	2.27	0.50
1:A:1683:ILE:HD11	1:A:1740:VAL:HG23	1.94	0.50
1:A:1480:TYR:O	1:A:1481:PRO:C	2.55	0.49
1:A:1639:ASN:HD22	2:J:1:NAG:C8	2.12	0.49
1:A:1656:VAL:HG22	1:A:1798:THR:HB	1.94	0.49
1:A:1411:PRO:HD2	1:A:1414:MET:HG2	1.94	0.49
1:A:246:ASN:HA	1:A:300:PRO:HG3	1.95	0.48
1:A:1769:TRP:CD1	1:A:1800:VAL:HG13	2.48	0.48
3:C:2:NAG:O3	3:C:2:NAG:H82	2.13	0.48
1:A:1167:LEU:N	1:A:1168:PRO:HA	2.29	0.48
1:A:400:PHE:HB3	1:A:401:PRO:HD3	1.96	0.47
1:A:1188:THR:HG23	1:A:1190:GLU:H	1.80	0.47
1:A:573:ARG:NH2	1:A:691:TYR:OH	2.47	0.47
1:A:1769:TRP:HD1	1:A:1800:VAL:HG13	1.79	0.46
1:A:1120:MET:HB3	1:A:1136:VAL:HG13	1.97	0.46
1:A:1167:LEU:HB3	1:A:1168:PRO:C	2.40	0.46
1:A:1639:ASN:HB2	1:A:1666:ASP:OD2	2.14	0.46
1:A:715:ASP:OD2	1:A:747:TYR:OH	2.31	0.46
1:A:777:LYS:HB3	1:A:777:LYS:HE3	1.48	0.46
1:A:907:THR:HG22	1:A:908:GLU:H	1.81	0.45
1:A:71:ASP:OD1	1:A:71:ASP:N	2.48	0.45
1:A:707:PRO:HG2	1:A:710:HIS:CD2	2.52	0.45
1:A:1321:VAL:HG12	1:A:1322:TRP:CD1	2.52	0.45
1:A:352:TYR:CD2	1:A:656:GLN:HB2	2.52	0.45
1:A:838:LEU:HD23	1:A:856:SER:HA	1.98	0.45
1:A:972:VAL:HG23	1:A:1059:PHE:HB2	2.00	0.44
1:A:883:LYS:HD3	1:A:886:ASP:HA	1.99	0.44
1:A:743:LYS:HA	1:A:771:MET:O	2.17	0.44
1:A:1247:ILE:HD12	1:A:1253:GLN:HG2	1.99	0.44
1:A:79:CYS:SG	1:A:80:ASP:N	2.88	0.44
1:A:950:CYS:HB3	1:A:964:TYR:O	2.18	0.44
1:A:1462:GLU:O	1:A:1466:GLU:HG3	2.18	0.44
1:A:1647:ALA:HA	1:A:1661:ARG:HH21	1.81	0.44
1:A:929:GLU:H	1:A:929:GLU:HG3	1.66	0.44
1:A:672:LEU:C	1:A:672:LEU:HD23	2.42	0.43
1:A:88:PRO:HA	1:A:96:TRP:CD1	2.53	0.43

Continued on next page...

Continued from previous page...

Atom-1	Atom-2	Interatomic distance (Å)	Clash overlap (Å)
1:A:477:TRP:CE2	1:A:481:PHE:CE2	3.06	0.43
1:A:877:PRO:HD2	1:A:895:VAL:HG11	2.01	0.43
1:A:945:CYS:O	1:A:946:VAL:C	2.61	0.43
1:A:1592:MET:HE2	1:A:1592:MET:HA	2.00	0.43
1:A:86:TRP:CD1	1:A:88:PRO:HD3	2.54	0.43
1:A:65:ARG:O	1:A:299:GLN:NE2	2.51	0.43
1:A:383:TYR:O	1:A:393:ASN:N	2.47	0.43
1:A:1405:ASP:O	1:A:1409:ASN:ND2	2.51	0.43
1:A:1741:SER:O	1:A:1744:THR:HG22	2.19	0.43
1:A:386:LYS:O	1:A:387:ARG:C	2.62	0.43
1:A:1328:ILE:HD12	1:A:1343:TYR:CD1	2.54	0.42
1:A:63:LEU:O	1:A:299:GLN:NE2	2.47	0.42
1:A:92:ILE:C	1:A:94:VAL:H	2.27	0.42
1:A:301:ALA:H	1:A:302:PRO:HA	1.83	0.42
2:E:1:NAG:C1	2:E:1:NAG:C8	2.98	0.42
1:A:1310:TYR:O	1:A:1311:PRO:C	2.62	0.42
1:A:1534:MET:HE2	1:A:1534:MET:HB3	1.93	0.42
1:A:384:MET:HB3	1:A:388:ARG:O	2.19	0.42
1:A:1328:ILE:HD12	1:A:1343:TYR:HD1	1.84	0.42
1:A:497:MET:HE3	1:A:497:MET:HB3	1.92	0.41
1:A:1230:TYR:HE1	1:A:1277:MET:HE3	1.84	0.41
1:A:879:ASN:OD1	1:A:879:ASN:N	2.52	0.41
1:A:57:CYS:SG	1:A:85:CYS:SG	3.09	0.41
1:A:726:LEU:HD23	1:A:732:LEU:HA	2.03	0.41
1:A:1391:PRO:HG2	1:A:1429:LEU:HD13	2.02	0.41
1:A:1400:SER:HA	1:A:1401:PRO:C	2.45	0.41
1:A:233:LEU:HG	1:A:273:PHE:HB3	2.03	0.41
1:A:1360:TRP:CD1	1:A:1363:ARG:HH12	2.39	0.41
1:A:357:LEU:HD11	1:A:403:LEU:HD22	2.02	0.41
1:A:408:HIS:NE2	1:A:491:ASP:OD2	2.53	0.40
1:A:1106:HIS:HD2	1:A:1108:ALA:H	1.68	0.40
1:A:1207:PRO:HG2	1:A:1210:SER:HB3	2.03	0.40
1:A:266:LEU:HD23	1:A:266:LEU:HA	1.96	0.40
1:A:1428:THR:OG1	1:A:1429:LEU:N	2.55	0.40
1:A:1611:ASP:O	1:A:1614:THR:OG1	2.37	0.40
1:A:1121:PHE:O	1:A:1122:SER:C	2.63	0.40
1:A:219:LEU:HB2	1:A:308:THR:HG22	2.02	0.40
1:A:1217:ARG:HB3	1:A:1220:TYR:CZ	2.57	0.40
1:A:1251:GLU:O	1:A:1252:ARG:C	2.64	0.40

There are no symmetry-related clashes.

5.3 Torsion angles [i](#)

5.3.1 Protein backbone [i](#)

In the following table, the Percentiles column shows the percent Ramachandran outliers of the chain as a percentile score with respect to all PDB entries followed by that with respect to all EM entries.

The Analysed column shows the number of residues for which the backbone conformation was analysed, and the total number of residues.

Mol	Chain	Analysed	Favoured	Allowed	Outliers	Percentiles
1	A	1769/1795 (99%)	1676 (95%)	88 (5%)	5 (0%)	36 66

All (5) Ramachandran outliers are listed below:

Mol	Chain	Res	Type
1	A	458	VAL
1	A	1321	VAL
1	A	1401	PRO
1	A	1311	PRO
1	A	1481	PRO

5.3.2 Protein sidechains [i](#)

In the following table, the Percentiles column shows the percent sidechain outliers of the chain as a percentile score with respect to all PDB entries followed by that with respect to all EM entries.

The Analysed column shows the number of residues for which the sidechain conformation was analysed, and the total number of residues.

Mol	Chain	Analysed	Rotameric	Outliers	Percentiles
1	A	1549/1569 (99%)	1502 (97%)	47 (3%)	36 63

All (47) residues with a non-rotameric sidechain are listed below:

Mol	Chain	Res	Type
1	A	72	GLN
1	A	73	SER
1	A	79	CYS
1	A	80	ASP
1	A	242	ARG
1	A	318	LEU

Continued on next page...

Continued from previous page...

Mol	Chain	Res	Type
1	A	334	ILE
1	A	351	ARG
1	A	365	GLU
1	A	384	MET
1	A	386	LYS
1	A	387	ARG
1	A	388	ARG
1	A	395	VAL
1	A	443	ILE
1	A	458	VAL
1	A	660	VAL
1	A	763	THR
1	A	777	LYS
1	A	778	ILE
1	A	825	ASP
1	A	879	ASN
1	A	907	THR
1	A	923	VAL
1	A	926	ARG
1	A	928	GLU
1	A	929	GLU
1	A	948	ARG
1	A	974	ASP
1	A	978	ASP
1	A	987	SER
1	A	1076	GLN
1	A	1090	SER
1	A	1107	THR
1	A	1110	ARG
1	A	1111	ARG
1	A	1224	SER
1	A	1225	GLU
1	A	1324	ASP
1	A	1395	VAL
1	A	1403	CYS
1	A	1406	SER
1	A	1658	ILE
1	A	1666	ASP
1	A	1768	ILE
1	A	1778	SER
1	A	1805	VAL

Sometimes sidechains can be flipped to improve hydrogen bonding and reduce clashes. All (15)

such sidechains are listed below:

Mol	Chain	Res	Type
1	A	239	GLN
1	A	264	ASN
1	A	479	ASN
1	A	542	HIS
1	A	717	ASN
1	A	884	GLN
1	A	1003	ASN
1	A	1096	GLN
1	A	1106	HIS
1	A	1116	HIS
1	A	1125	GLN
1	A	1165	GLN
1	A	1243	GLN
1	A	1373	GLN
1	A	1591	HIS

5.3.3 RNA [i](#)

There are no RNA molecules in this entry.

5.4 Non-standard residues in protein, DNA, RNA chains [i](#)

There are no non-standard protein/DNA/RNA residues in this entry.

5.5 Carbohydrates [i](#)

23 monosaccharides are modelled in this entry.

In the following table, the Counts columns list the number of bonds (or angles) for which Mogul statistics could be retrieved, the number of bonds (or angles) that are observed in the model and the number of bonds (or angles) that are defined in the Chemical Component Dictionary. The Link column lists molecule types, if any, to which the group is linked. The Z score for a bond length (or angle) is the number of standard deviations the observed value is removed from the expected value. A bond length (or angle) with $|Z| > 2$ is considered an outlier worth inspection. RMSZ is the root-mean-square of all Z scores of the bond lengths (or angles).

Mol	Type	Chain	Res	Link	Bond lengths			Bond angles		
					Counts	RMSZ	$\# Z > 2$	Counts	RMSZ	$\# Z > 2$
2	NAG	B	1	1,2	14,14,15	0.42	0	17,19,21	1.23	2 (11%)
2	NAG	B	2	2	14,14,15	0.38	0	17,19,21	1.08	1 (5%)

Mol	Type	Chain	Res	Link	Bond lengths			Bond angles		
					Counts	RMSZ	# Z > 2	Counts	RMSZ	# Z > 2
3	NAG	C	1	1,3	14,14,15	0.50	0	17,19,21	1.06	2 (11%)
3	NAG	C	2	3	14,14,15	0.47	0	17,19,21	1.41	2 (11%)
3	FUC	C	3	3	10,10,11	0.46	0	14,14,16	0.64	0
2	NAG	D	1	1,2	14,14,15	0.34	0	17,19,21	0.88	1 (5%)
2	NAG	D	2	2	14,14,15	0.35	0	17,19,21	0.98	1 (5%)
2	NAG	E	1	1,2	14,14,15	0.41	0	17,19,21	2.08	5 (29%)
2	NAG	E	2	2	14,14,15	0.36	0	17,19,21	0.83	1 (5%)
2	NAG	F	1	1,2	14,14,15	0.31	0	17,19,21	0.92	1 (5%)
2	NAG	F	2	2	14,14,15	0.34	0	17,19,21	0.99	2 (11%)
2	NAG	G	1	1,2	14,14,15	0.42	0	17,19,21	1.10	1 (5%)
2	NAG	G	2	2	14,14,15	0.36	0	17,19,21	0.99	1 (5%)
2	NAG	H	1	1,2	14,14,15	0.42	0	17,19,21	1.46	2 (11%)
2	NAG	H	2	2	14,14,15	0.39	0	17,19,21	0.85	0
2	NAG	I	1	1,2	14,14,15	0.41	0	17,19,21	0.42	0
2	NAG	I	2	2	14,14,15	0.40	0	17,19,21	0.27	0
2	NAG	J	1	1,2	14,14,15	0.43	0	17,19,21	1.59	2 (11%)
2	NAG	J	2	2	14,14,15	0.34	0	17,19,21	0.55	0
2	NAG	K	1	1,2	14,14,15	0.39	0	17,19,21	0.85	2 (11%)
2	NAG	K	2	2	14,14,15	0.35	0	17,19,21	1.01	1 (5%)
2	NAG	L	1	1,2	14,14,15	0.44	0	17,19,21	0.90	1 (5%)
2	NAG	L	2	2	14,14,15	0.38	0	17,19,21	1.04	1 (5%)

In the following table, the Chirals column lists the number of chiral outliers, the number of chiral centers analysed, the number of these observed in the model and the number defined in the Chemical Component Dictionary. Similar counts are reported in the Torsion and Rings columns. '-' means no outliers of that kind were identified.

Mol	Type	Chain	Res	Link	Chirals	Torsions	Rings
2	NAG	B	1	1,2	-	2/6/23/26	0/1/1/1
2	NAG	B	2	2	-	2/6/23/26	0/1/1/1
3	NAG	C	1	1,3	-	0/6/23/26	0/1/1/1
3	NAG	C	2	3	-	2/6/23/26	0/1/1/1
3	FUC	C	3	3	-	-	0/1/1/1
2	NAG	D	1	1,2	-	2/6/23/26	0/1/1/1
2	NAG	D	2	2	-	3/6/23/26	0/1/1/1
2	NAG	E	1	1,2	-	3/6/23/26	0/1/1/1
2	NAG	E	2	2	-	0/6/23/26	0/1/1/1

Continued on next page...

Continued from previous page...

Mol	Type	Chain	Res	Link	Chirals	Torsions	Rings
2	NAG	F	1	1,2	-	2/6/23/26	0/1/1/1
2	NAG	F	2	2	-	0/6/23/26	0/1/1/1
2	NAG	G	1	1,2	-	2/6/23/26	0/1/1/1
2	NAG	G	2	2	-	3/6/23/26	0/1/1/1
2	NAG	H	1	1,2	-	2/6/23/26	0/1/1/1
2	NAG	H	2	2	-	0/6/23/26	0/1/1/1
2	NAG	I	1	1,2	-	0/6/23/26	0/1/1/1
2	NAG	I	2	2	-	0/6/23/26	0/1/1/1
2	NAG	J	1	1,2	-	2/6/23/26	0/1/1/1
2	NAG	J	2	2	-	1/6/23/26	0/1/1/1
2	NAG	K	1	1,2	-	0/6/23/26	0/1/1/1
2	NAG	K	2	2	-	2/6/23/26	0/1/1/1
2	NAG	L	1	1,2	-	0/6/23/26	0/1/1/1
2	NAG	L	2	2	-	0/6/23/26	0/1/1/1

There are no bond length outliers.

All (29) bond angle outliers are listed below:

Mol	Chain	Res	Type	Atoms	Z	Observed(°)	Ideal(°)
2	E	1	NAG	C2-N2-C7	6.00	130.94	122.90
2	J	1	NAG	C2-N2-C7	5.06	129.68	122.90
2	H	1	NAG	C1-C2-N2	4.98	118.27	110.43
3	C	2	NAG	C2-N2-C7	4.77	129.29	122.90
2	E	1	NAG	C1-C2-N2	4.19	117.04	110.43
2	B	2	NAG	C2-N2-C7	3.41	127.47	122.90
2	K	2	NAG	C2-N2-C7	3.29	127.31	122.90
2	G	2	NAG	C2-N2-C7	3.19	127.17	122.90
2	G	1	NAG	C2-N2-C7	3.01	126.93	122.90
2	B	1	NAG	C1-C2-N2	2.91	115.02	110.43
2	J	1	NAG	C1-C2-N2	2.90	115.01	110.43
2	F	2	NAG	C1-C2-N2	2.88	114.97	110.43
2	L	2	NAG	C1-C2-N2	2.88	114.97	110.43
2	D	2	NAG	C2-N2-C7	2.84	126.70	122.90
2	B	1	NAG	C1-O5-C5	2.77	115.90	112.19
2	F	1	NAG	C2-N2-C7	2.68	126.50	122.90
3	C	1	NAG	C4-C3-C2	2.57	114.78	111.02
2	L	1	NAG	C1-O5-C5	2.50	115.54	112.19
3	C	2	NAG	C1-O5-C5	2.20	115.13	112.19
2	H	1	NAG	C1-O5-C5	2.17	115.10	112.19
2	D	1	NAG	C2-N2-C7	2.16	125.79	122.90

Continued on next page...

Continued from previous page...

Mol	Chain	Res	Type	Atoms	Z	Observed(°)	Ideal(°)
2	E	2	NAG	O5-C1-C2	-2.15	107.97	111.29
2	K	1	NAG	C1-O5-C5	2.13	115.04	112.19
2	E	1	NAG	O4-C4-C3	-2.11	105.40	110.38
2	F	2	NAG	O5-C1-C2	-2.09	108.06	111.29
2	E	1	NAG	C1-O5-C5	2.07	114.96	112.19
2	E	1	NAG	O5-C5-C6	-2.07	103.64	107.66
3	C	1	NAG	O4-C4-C3	-2.03	105.58	110.38
2	K	1	NAG	C1-C2-N2	2.02	113.62	110.43

There are no chirality outliers.

All (28) torsion outliers are listed below:

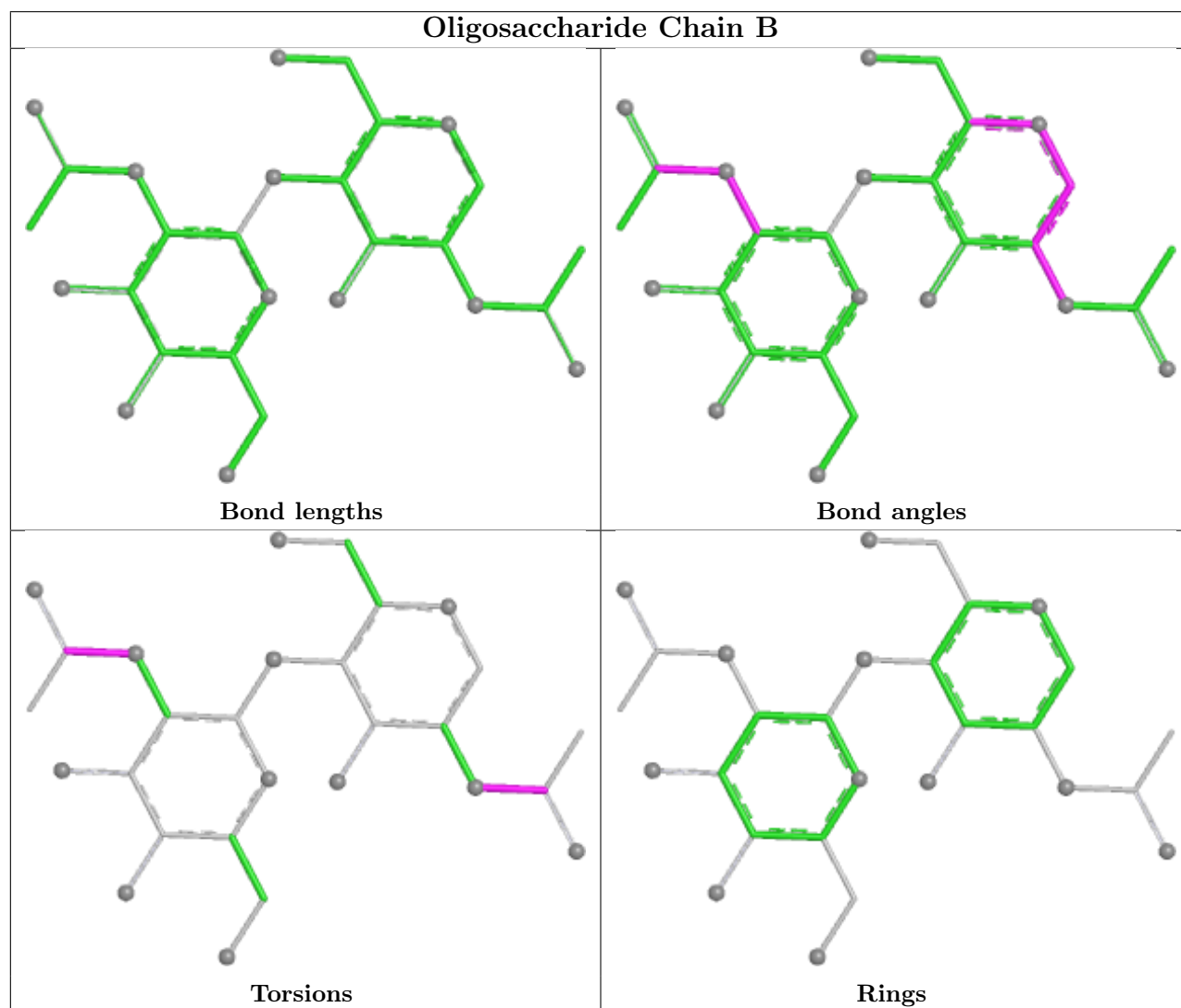
Mol	Chain	Res	Type	Atoms
2	E	1	NAG	C1-C2-N2-C7
2	E	1	NAG	C8-C7-N2-C2
2	E	1	NAG	O7-C7-N2-C2
2	B	1	NAG	C8-C7-N2-C2
2	B	1	NAG	O7-C7-N2-C2
2	B	2	NAG	C8-C7-N2-C2
2	B	2	NAG	O7-C7-N2-C2
2	D	1	NAG	C8-C7-N2-C2
2	D	1	NAG	O7-C7-N2-C2
2	F	1	NAG	C8-C7-N2-C2
2	F	1	NAG	O7-C7-N2-C2
2	G	1	NAG	C8-C7-N2-C2
2	G	1	NAG	O7-C7-N2-C2
2	J	1	NAG	C8-C7-N2-C2
2	J	1	NAG	O7-C7-N2-C2
2	K	2	NAG	C8-C7-N2-C2
2	K	2	NAG	O7-C7-N2-C2
3	C	2	NAG	C8-C7-N2-C2
3	C	2	NAG	O7-C7-N2-C2
2	D	2	NAG	O5-C5-C6-O6
2	J	2	NAG	O5-C5-C6-O6
2	G	2	NAG	O5-C5-C6-O6
2	H	1	NAG	O5-C5-C6-O6
2	D	2	NAG	C3-C2-N2-C7
2	G	2	NAG	C3-C2-N2-C7
2	D	2	NAG	C1-C2-N2-C7
2	G	2	NAG	C1-C2-N2-C7
2	H	1	NAG	C1-C2-N2-C7

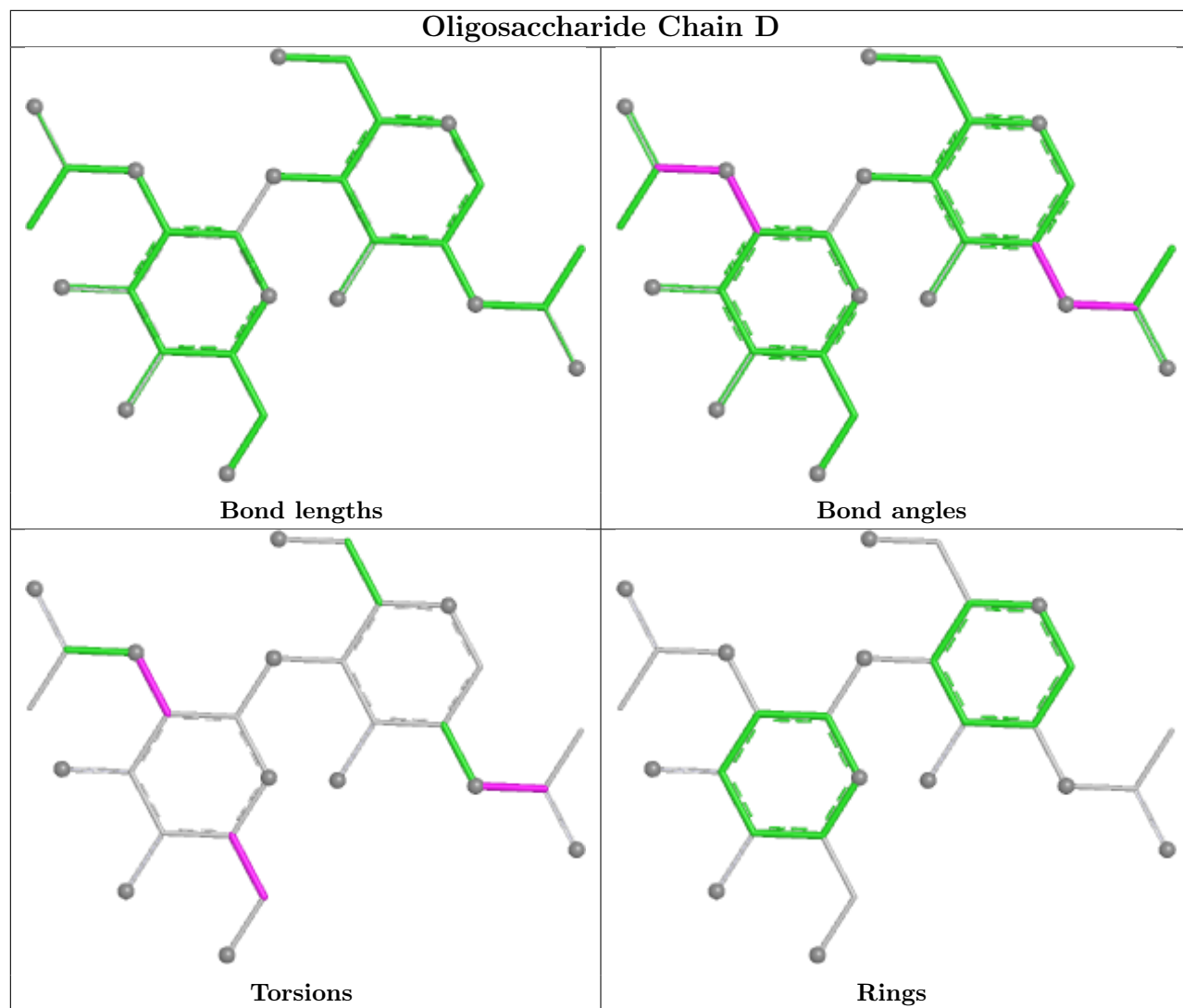
There are no ring outliers.

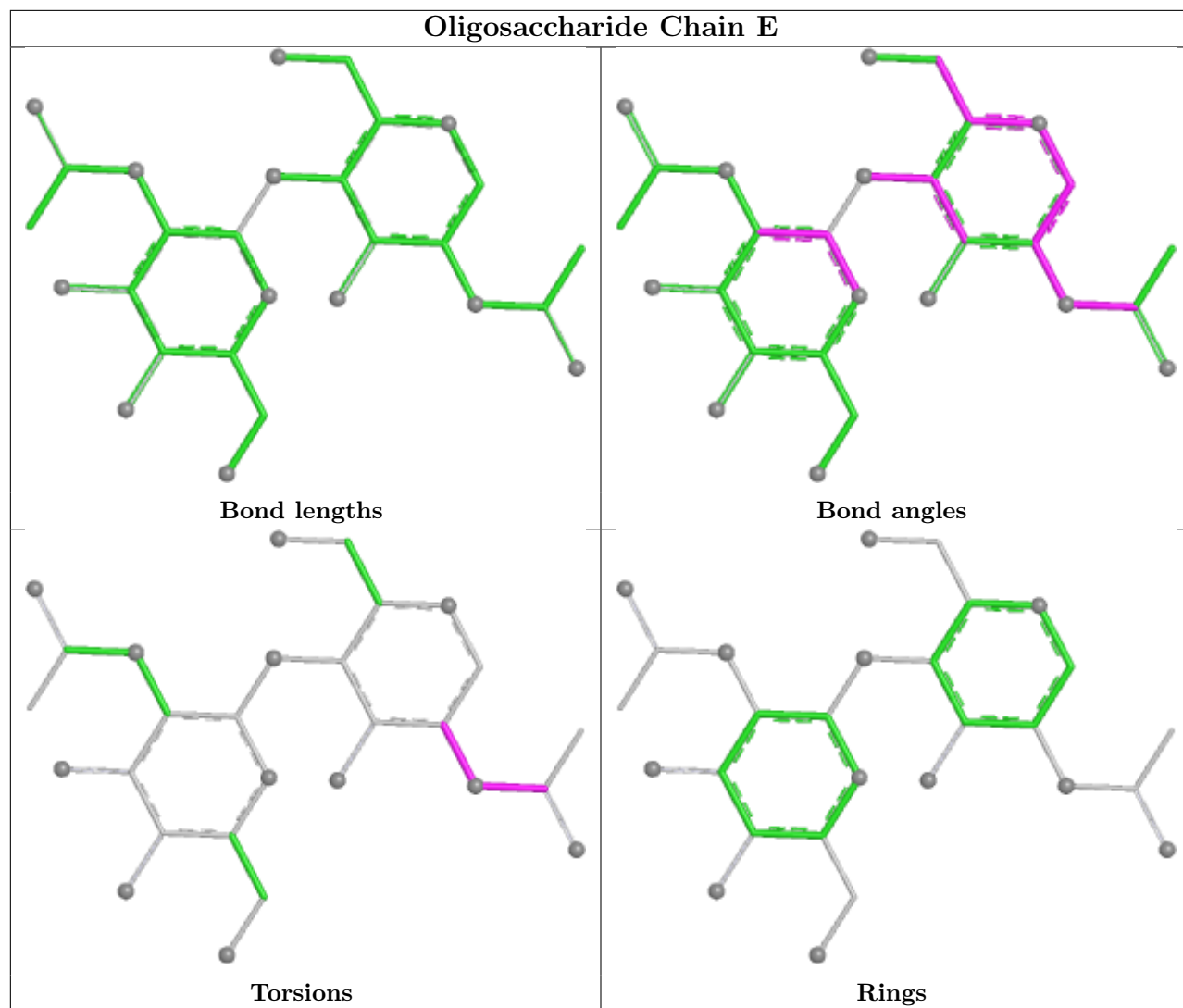
3 monomers are involved in 5 short contacts:

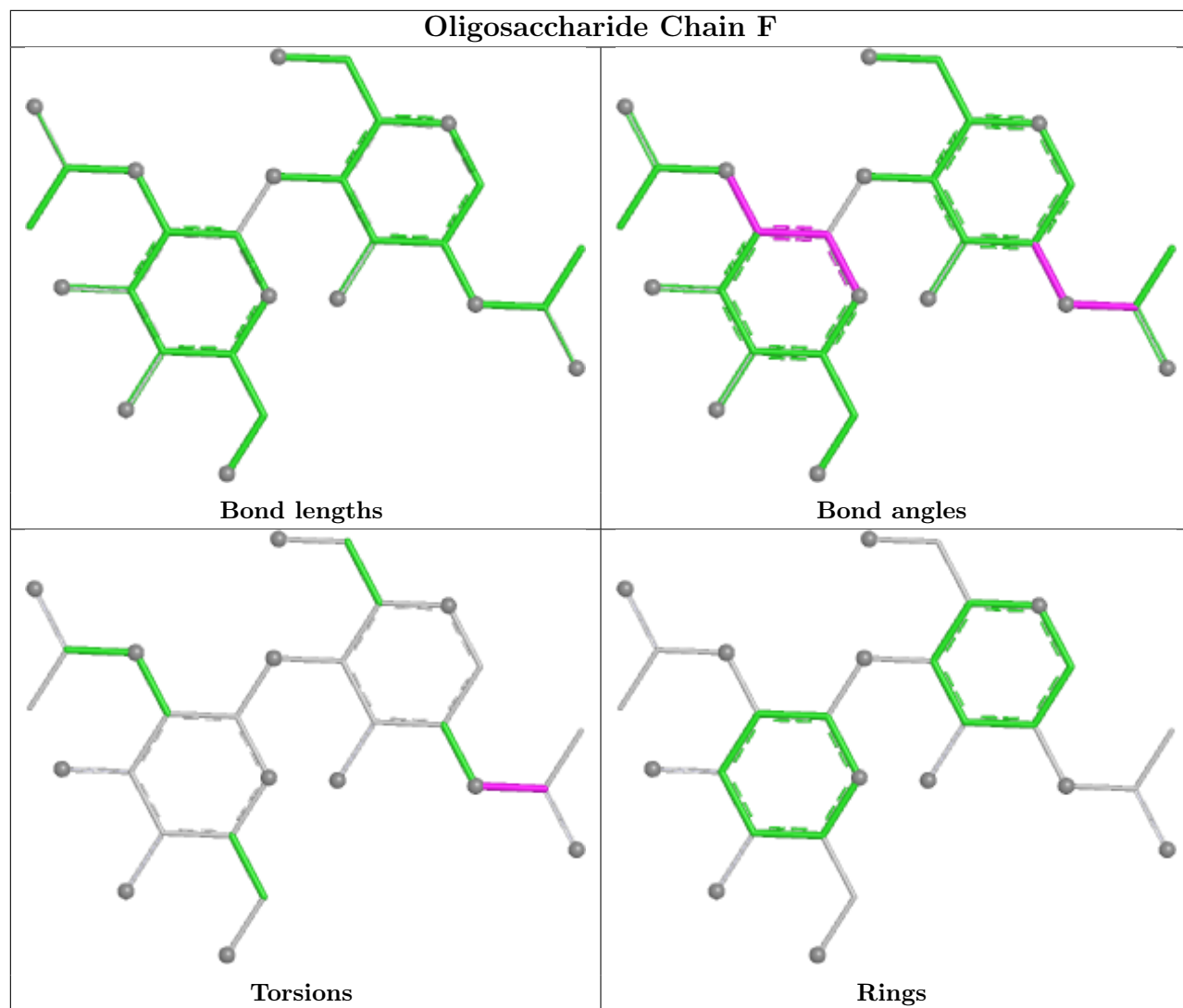
Mol	Chain	Res	Type	Clashes	Symm-Clashes
2	E	1	NAG	2	0
2	J	1	NAG	2	0
3	C	2	NAG	1	0

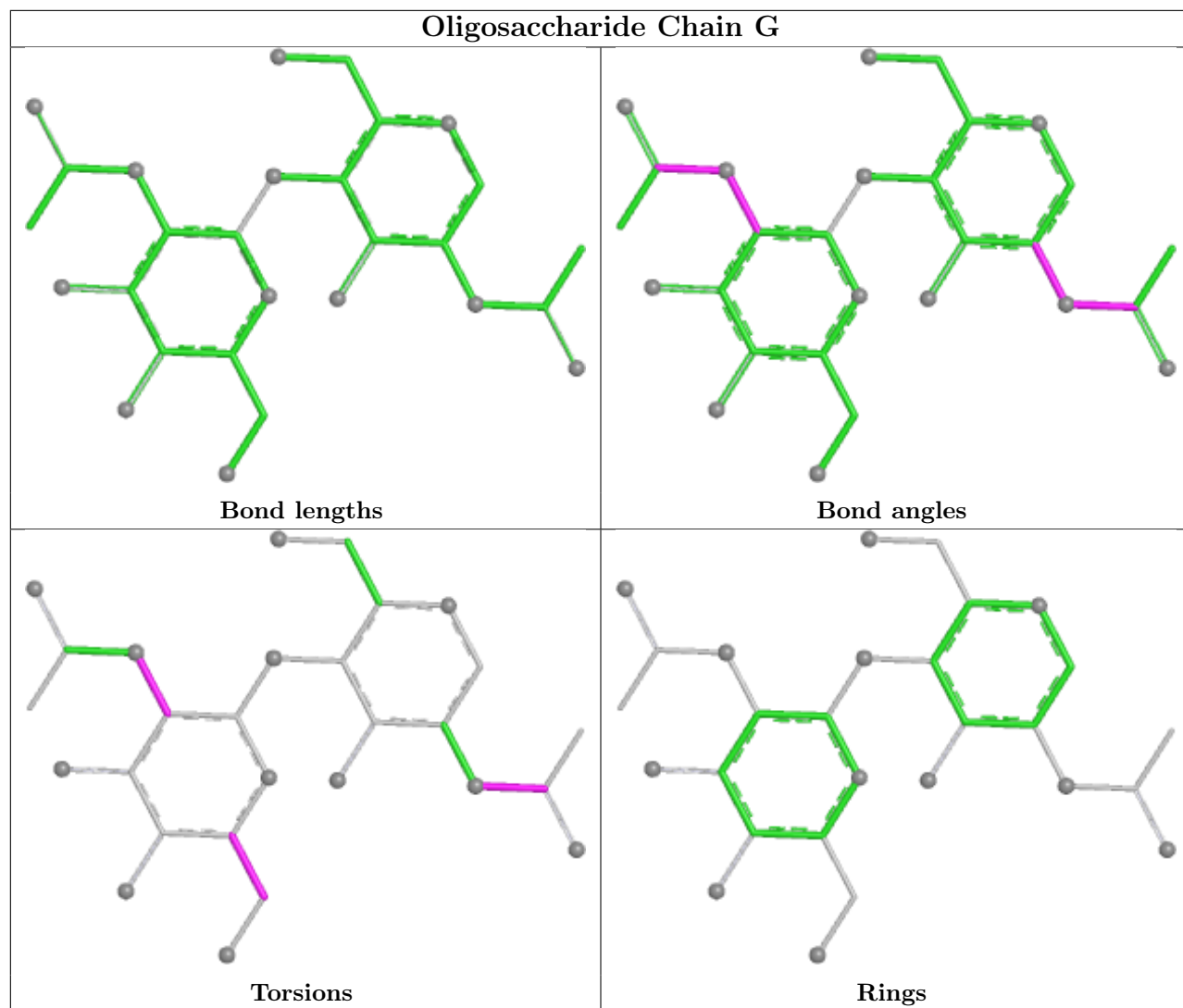
The following is a two-dimensional graphical depiction of Mogul quality analysis of bond lengths, bond angles, torsion angles, and ring geometry for oligosaccharide.

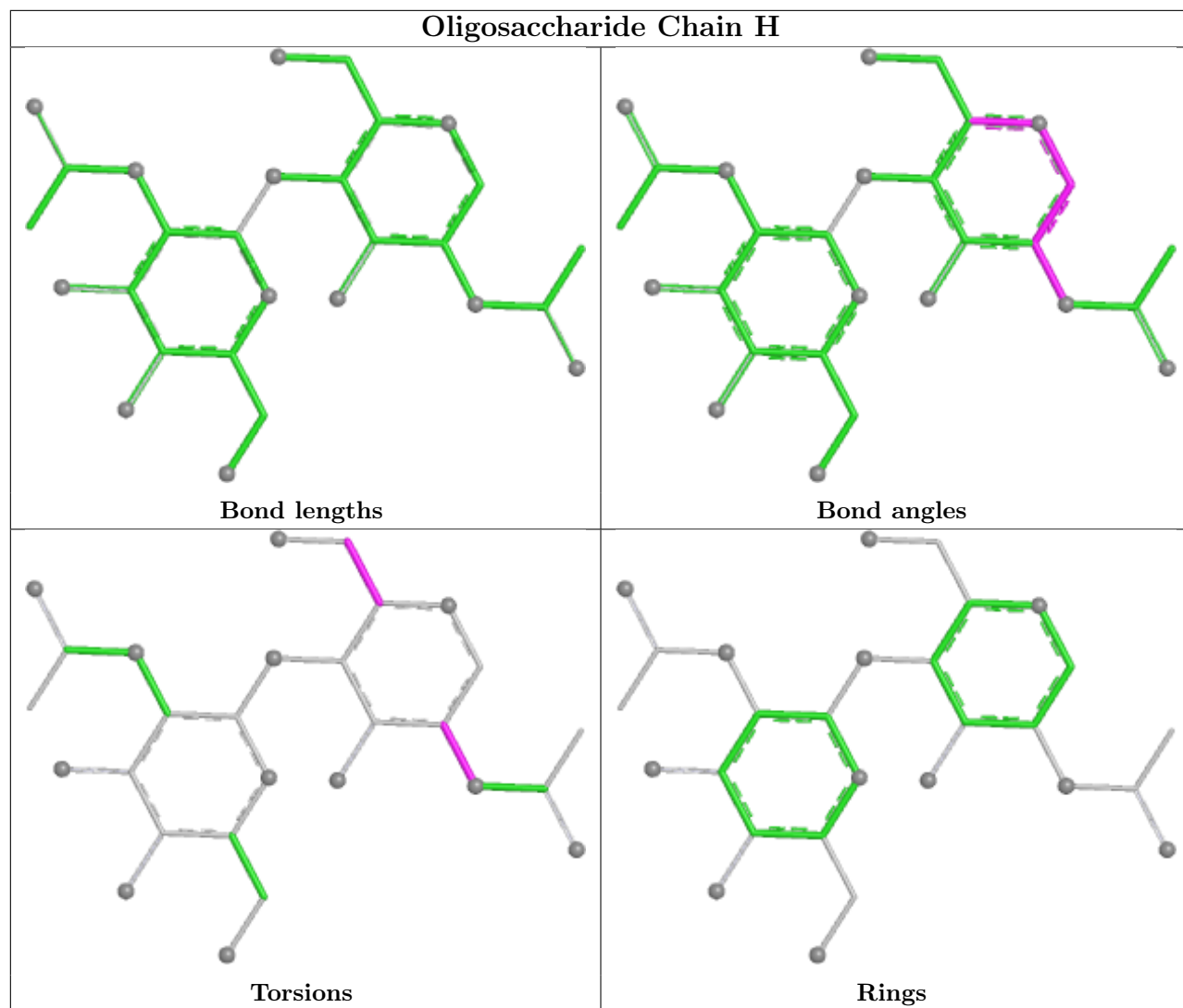


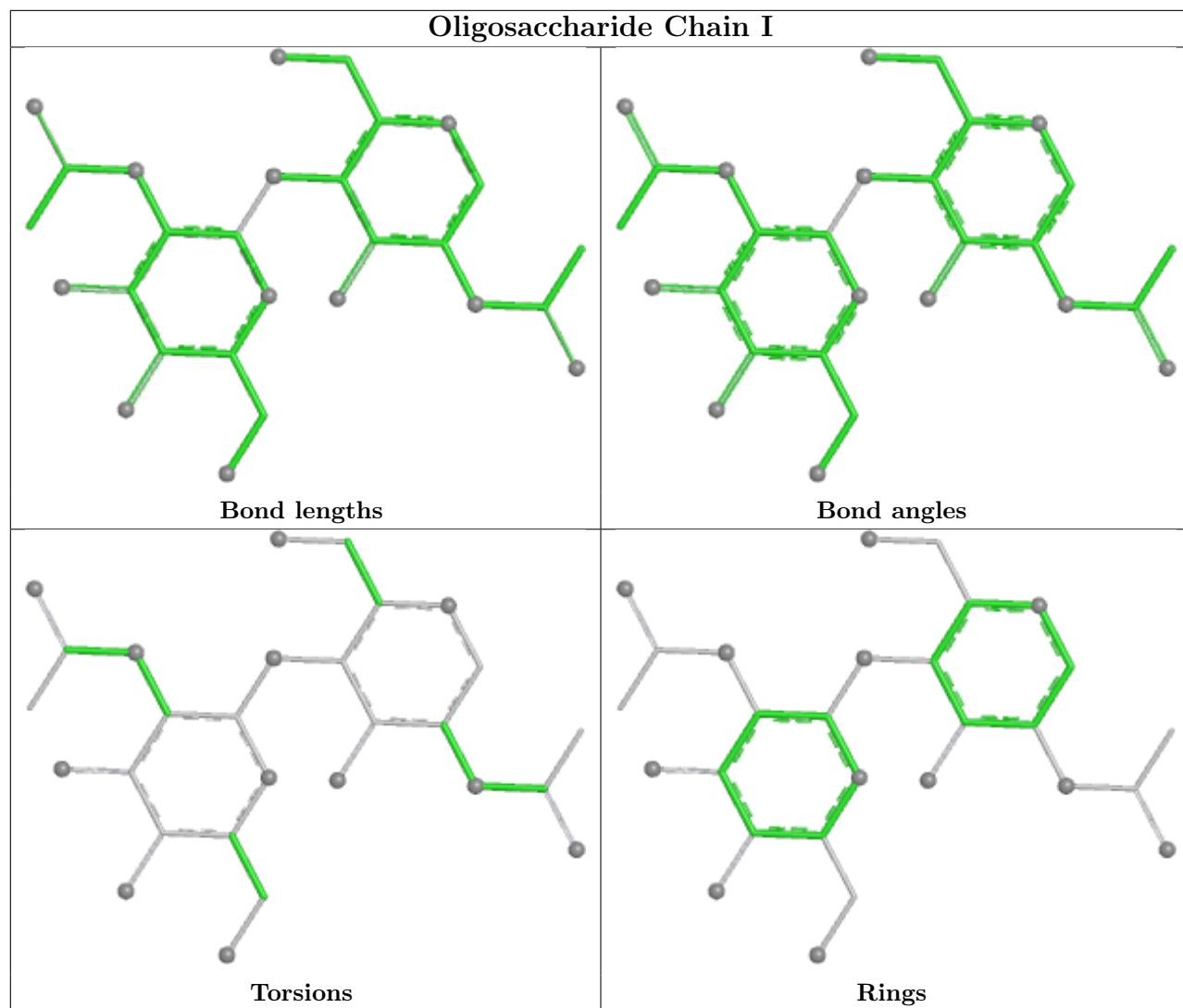


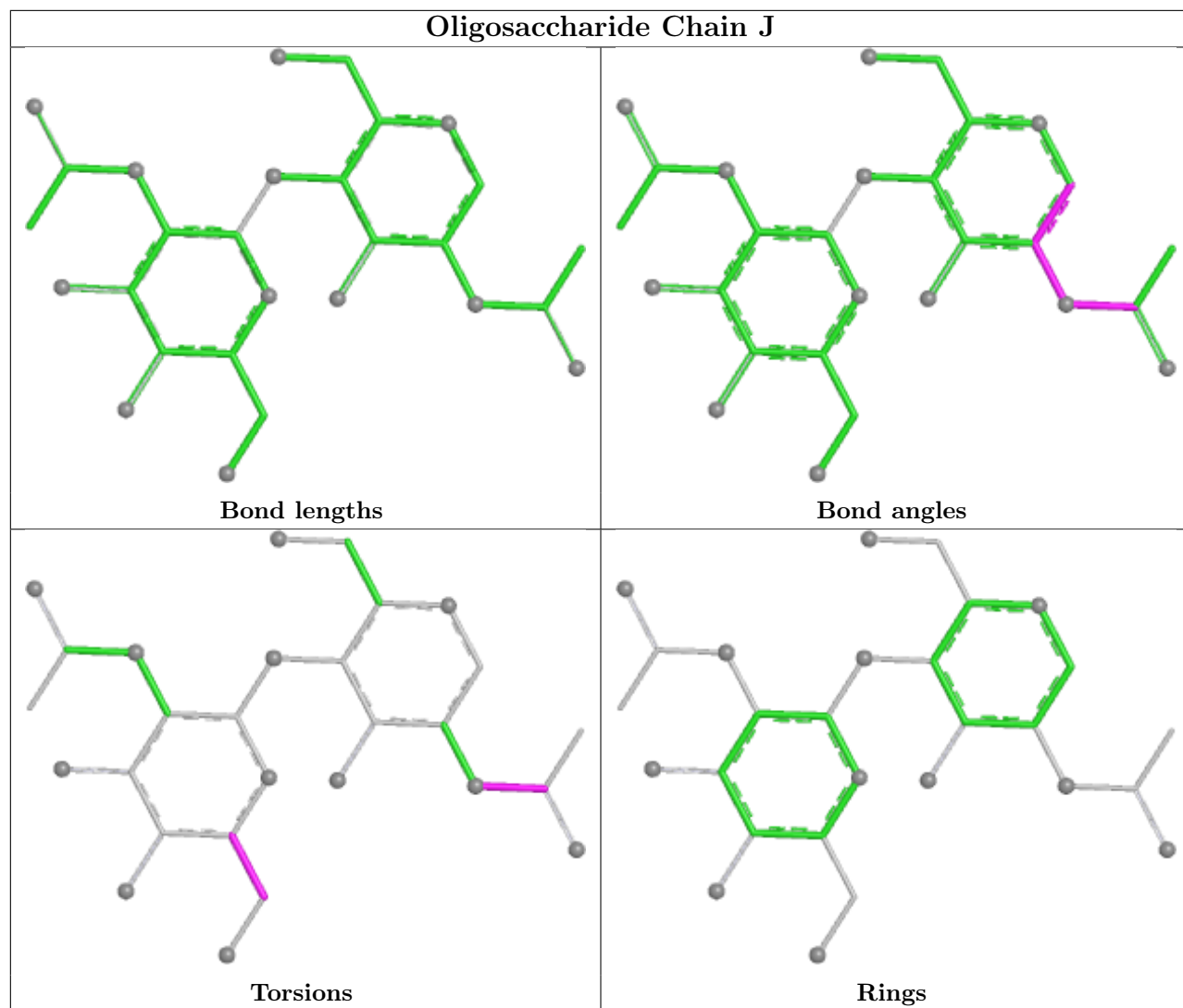


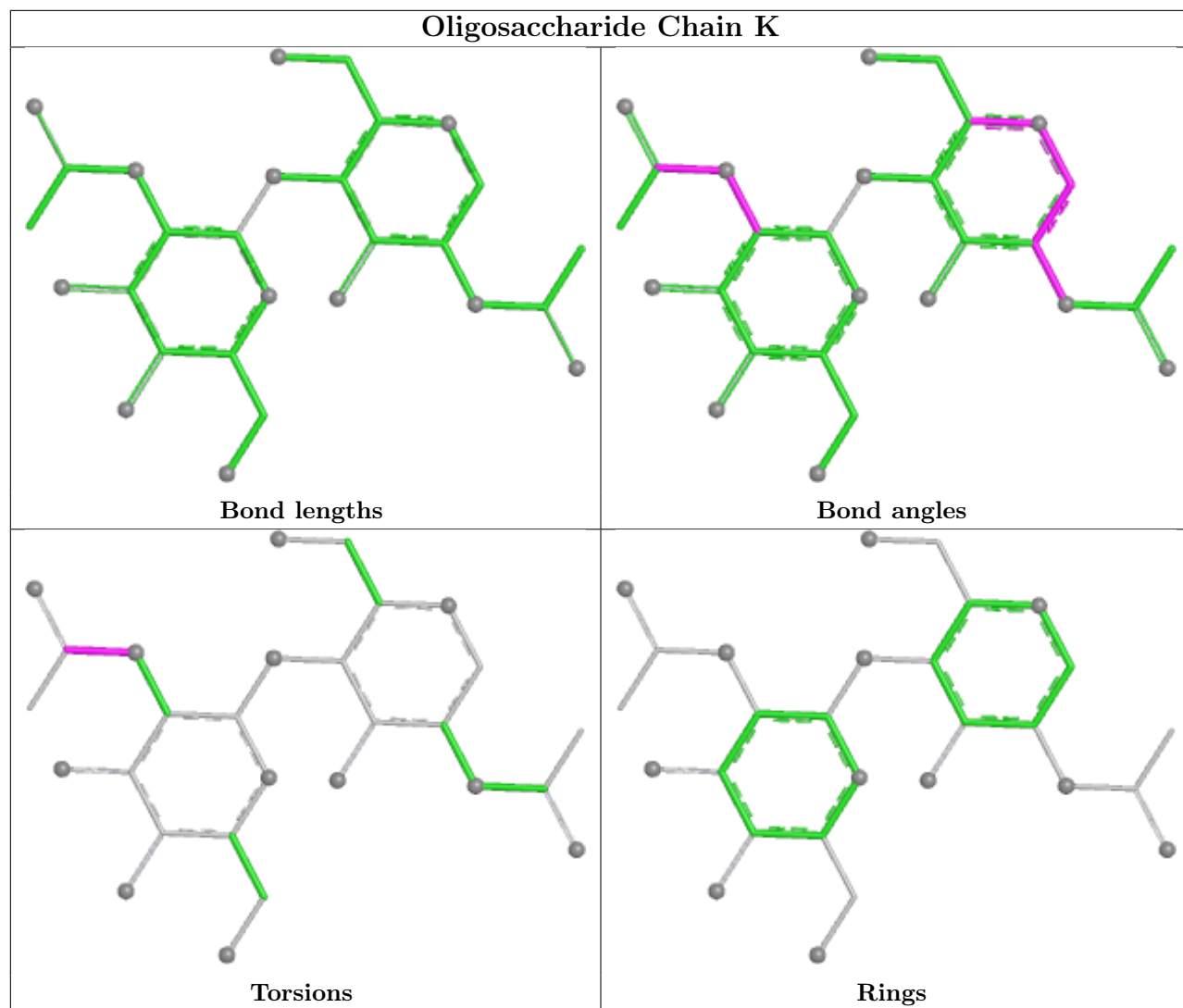


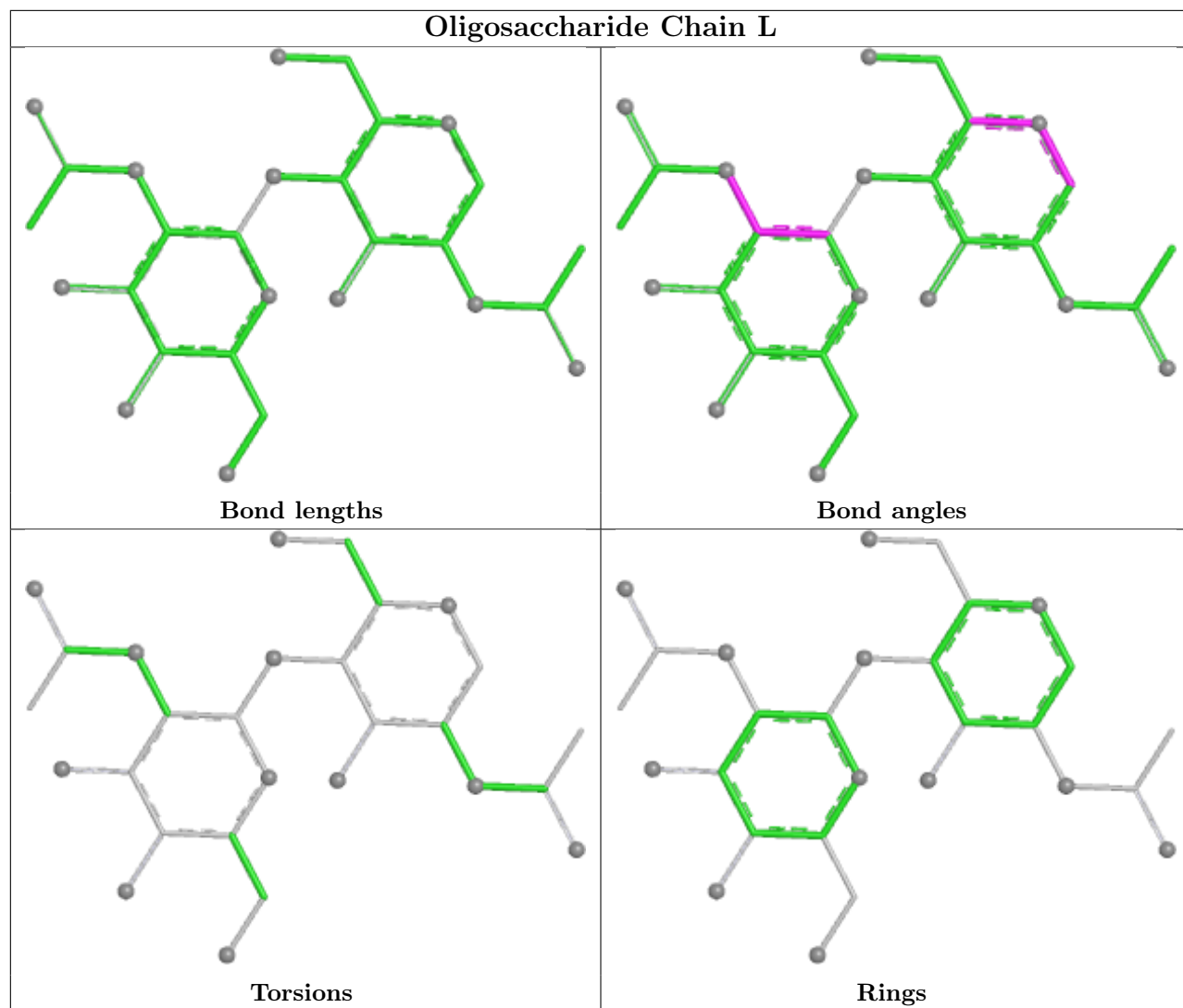


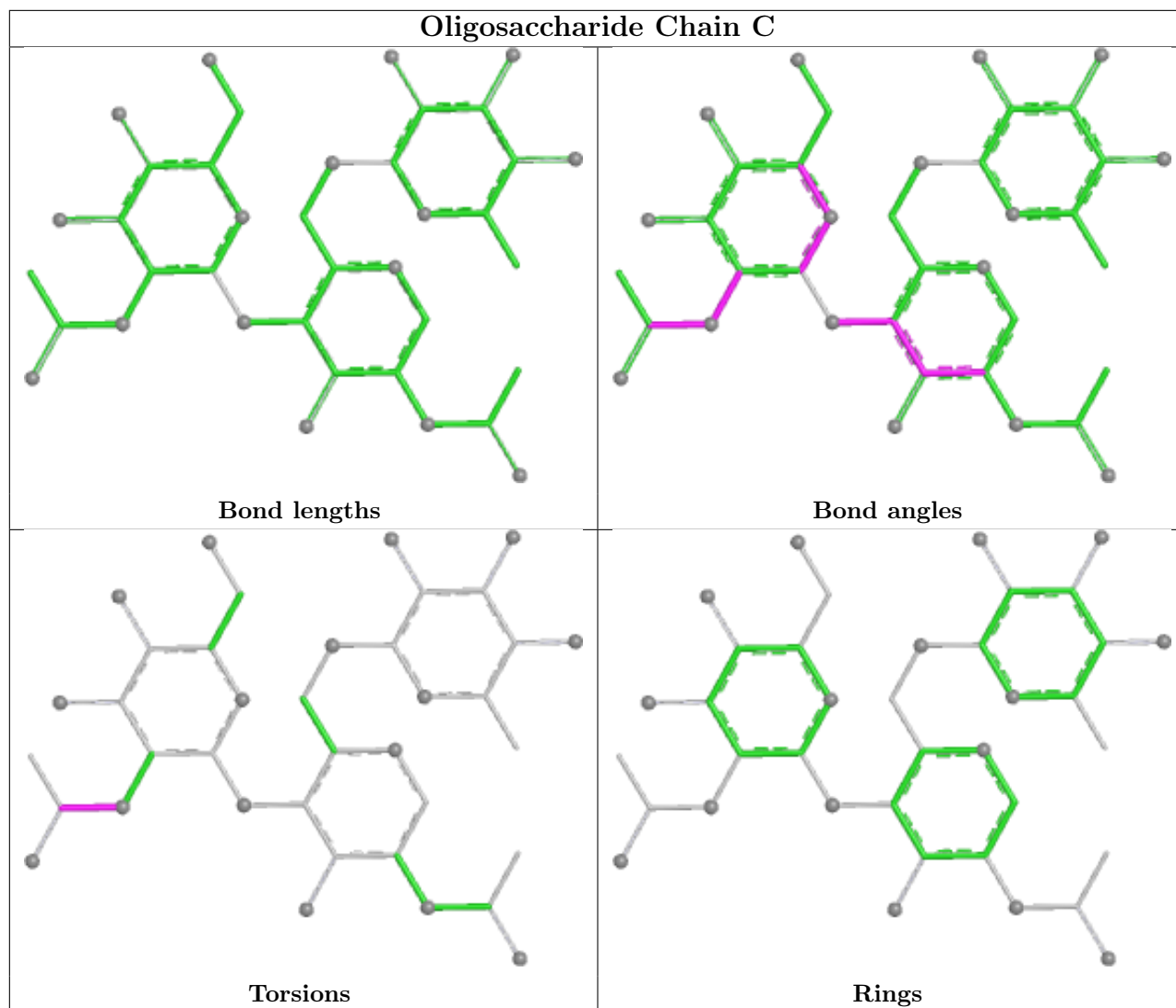












5.6 Ligand geometry [i](#)

1 ligand is modelled in this entry.

In the following table, the Counts columns list the number of bonds (or angles) for which Mogul statistics could be retrieved, the number of bonds (or angles) that are observed in the model and the number of bonds (or angles) that are defined in the Chemical Component Dictionary. The Link column lists molecule types, if any, to which the group is linked. The Z score for a bond length (or angle) is the number of standard deviations the observed value is removed from the expected value. A bond length (or angle) with $|Z| > 2$ is considered an outlier worth inspection. RMSZ is the root-mean-square of all Z scores of the bond lengths (or angles).

Mol	Type	Chain	Res	Link	Bond lengths			Bond angles		
					Counts	RMSZ	$\# Z > 2$	Counts	RMSZ	$\# Z > 2$
4	NAG	A	1901	1	14,14,15	0.38	0	17,19,21	0.87	1 (5%)

In the following table, the Chirals column lists the number of chiral outliers, the number of chiral

centers analysed, the number of these observed in the model and the number defined in the Chemical Component Dictionary. Similar counts are reported in the Torsion and Rings columns. '-' means no outliers of that kind were identified.

Mol	Type	Chain	Res	Link	Chirals	Torsions	Rings
4	NAG	A	1901	1	-	0/6/23/26	0/1/1/1

There are no bond length outliers.

All (1) bond angle outliers are listed below:

Mol	Chain	Res	Type	Atoms	Z	Observed(°)	Ideal(°)
4	A	1901	NAG	C1-O5-C5	2.41	115.41	112.19

There are no chirality outliers.

There are no torsion outliers.

There are no ring outliers.

No monomer is involved in short contacts.

5.7 Other polymers [i](#)

There are no such residues in this entry.

5.8 Polymer linkage issues [i](#)

There are no chain breaks in this entry.

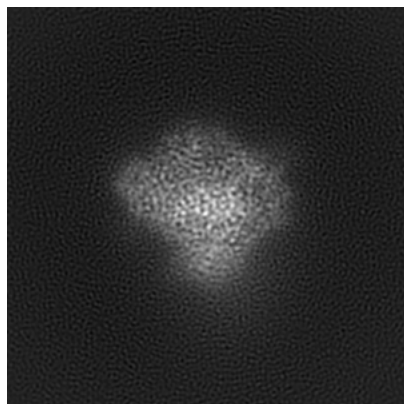
6 Map visualisation [i](#)

This section contains visualisations of the EMDB entry EMD-62652. These allow visual inspection of the internal detail of the map and identification of artifacts.

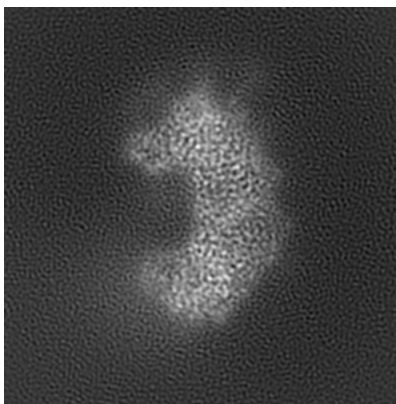
Images derived from a raw map, generated by summing the deposited half-maps, are presented below the corresponding image components of the primary map to allow further visual inspection and comparison with those of the primary map.

6.1 Orthogonal projections [i](#)

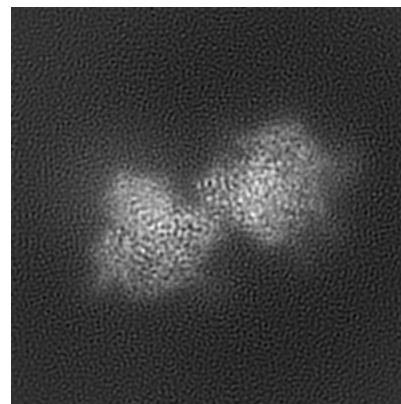
6.1.1 Primary map



X

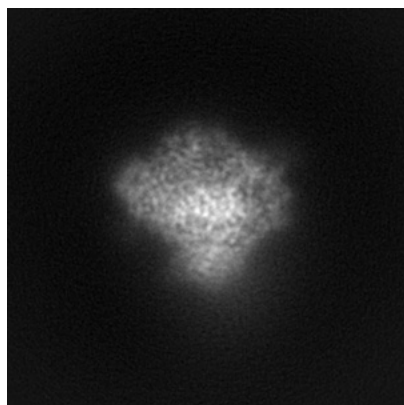


Y

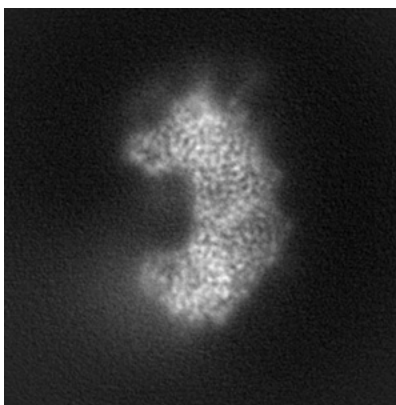


Z

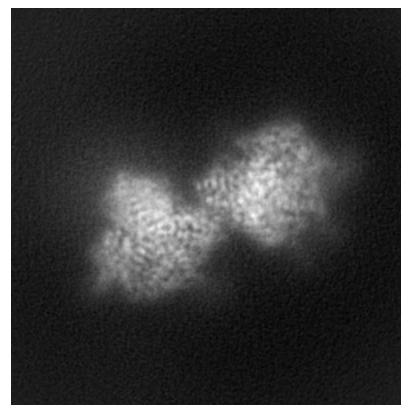
6.1.2 Raw map



X



Y

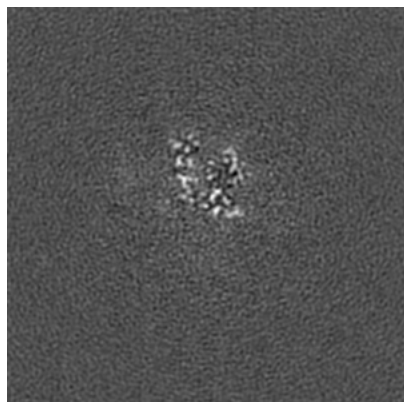


Z

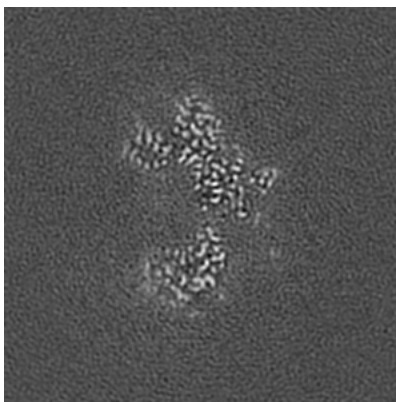
The images above show the map projected in three orthogonal directions.

6.2 Central slices [i](#)

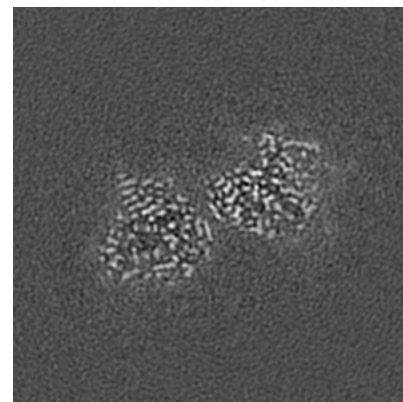
6.2.1 Primary map



X Index: 130

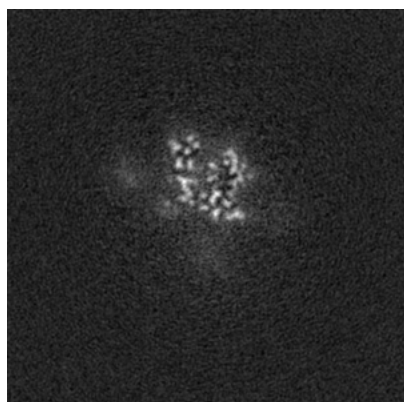


Y Index: 130

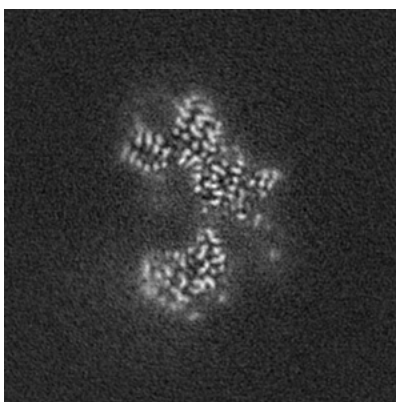


Z Index: 130

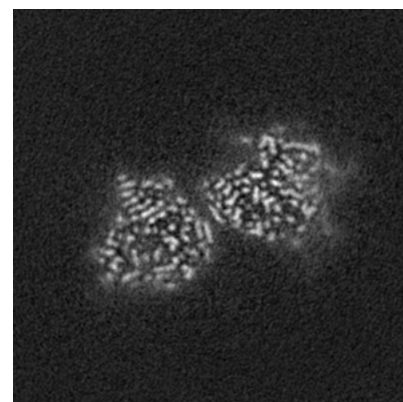
6.2.2 Raw map



X Index: 130



Y Index: 130

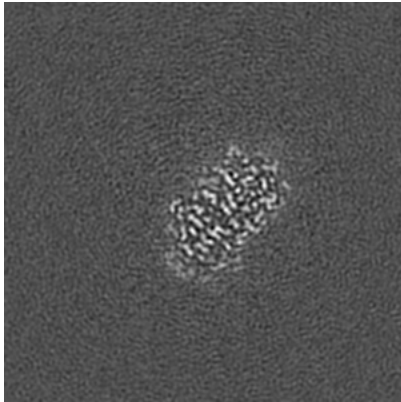


Z Index: 130

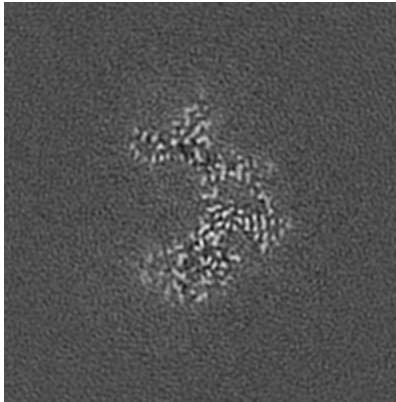
The images above show central slices of the map in three orthogonal directions.

6.3 Largest variance slices [i](#)

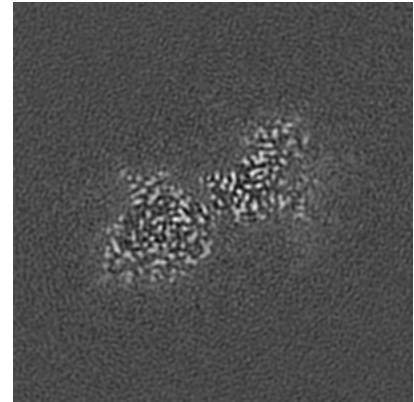
6.3.1 Primary map



X Index: 168

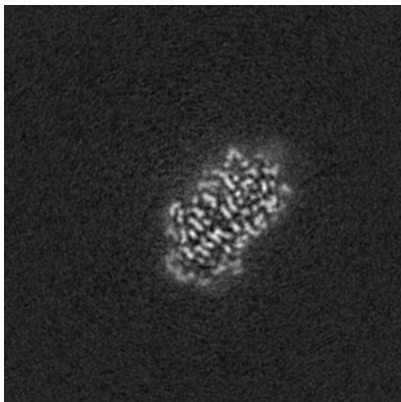


Y Index: 123

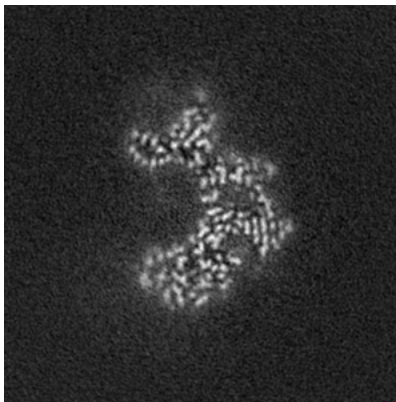


Z Index: 135

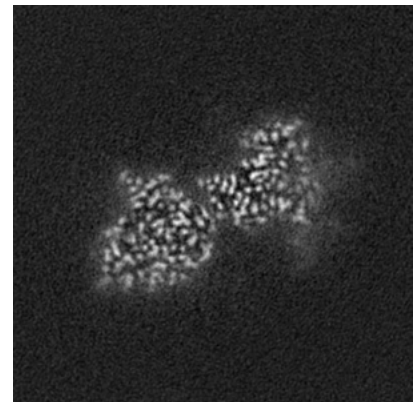
6.3.2 Raw map



X Index: 168



Y Index: 123

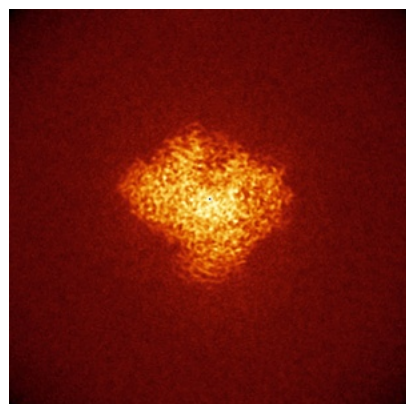


Z Index: 135

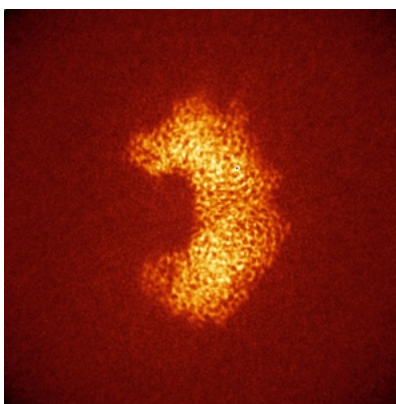
The images above show the largest variance slices of the map in three orthogonal directions.

6.4 Orthogonal standard-deviation projections (False-color) [i](#)

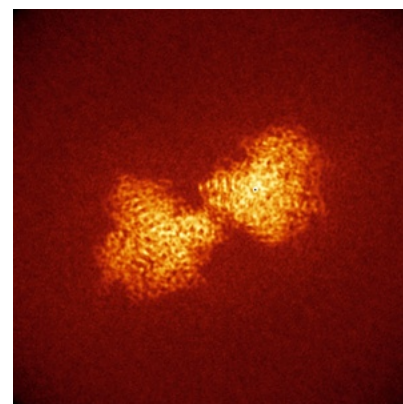
6.4.1 Primary map



X

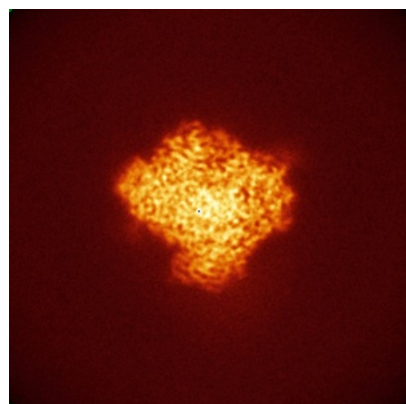


Y

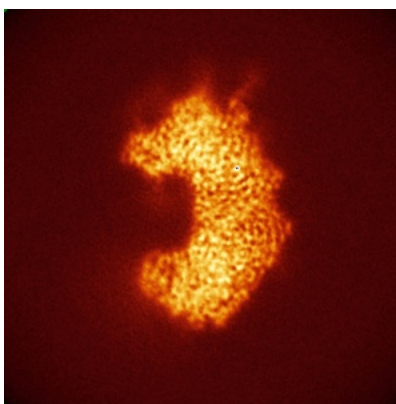


Z

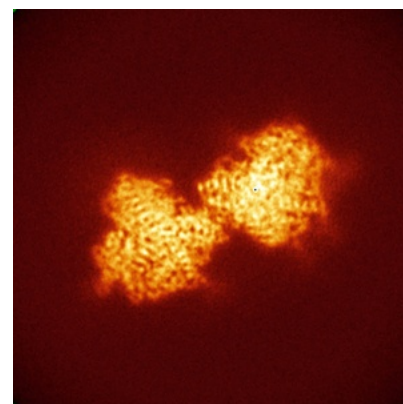
6.4.2 Raw map



X



Y



Z

The images above show the map standard deviation projections with false color in three orthogonal directions. Minimum values are shown in green, max in blue, and dark to light orange shades represent small to large values respectively.

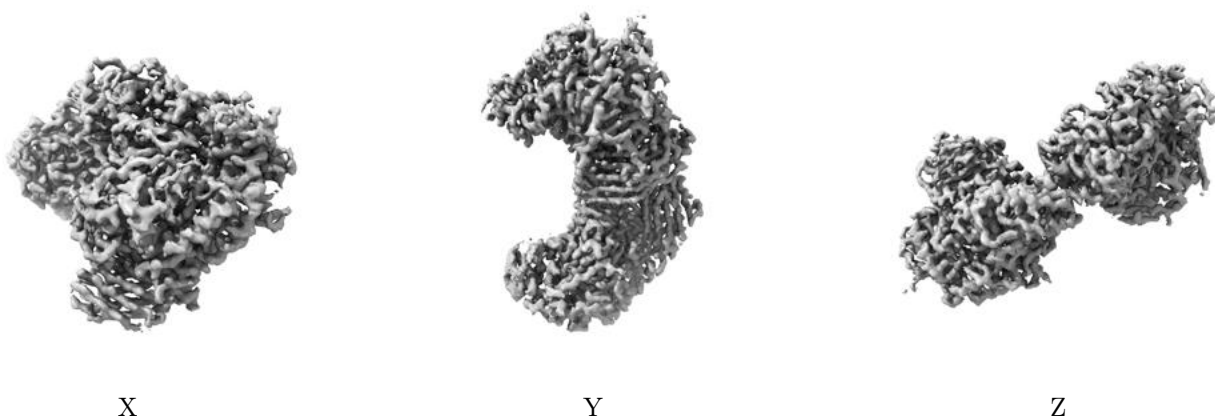
6.5 Orthogonal surface views [i](#)

6.5.1 Primary map



The images above show the 3D surface view of the map at the recommended contour level 0.055. These images, in conjunction with the slice images, may facilitate assessment of whether an appropriate contour level has been provided.

6.5.2 Raw map



These images show the 3D surface of the raw map. The raw map's contour level was selected so that its surface encloses the same volume as the primary map does at its recommended contour level.

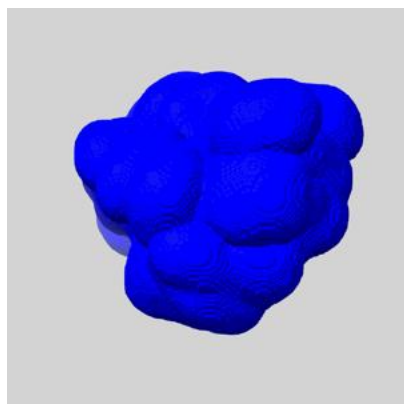
6.6 Mask visualisation [i](#)

This section shows the 3D surface view of the primary map at 50% transparency overlaid with the specified mask at 0% transparency

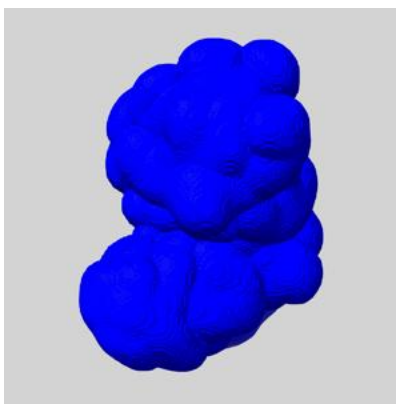
A mask typically either:

- Encompasses the whole structure
- Separates out a domain, a functional unit, a monomer or an area of interest from a larger structure

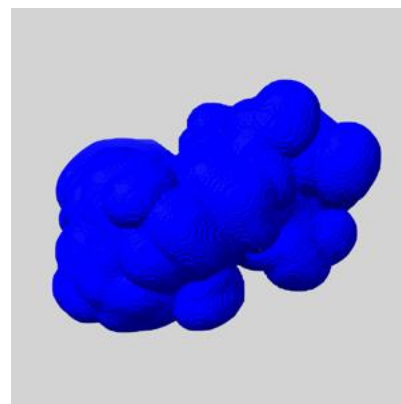
6.6.1 emd_62652_msk_1.map [i](#)



X



Y

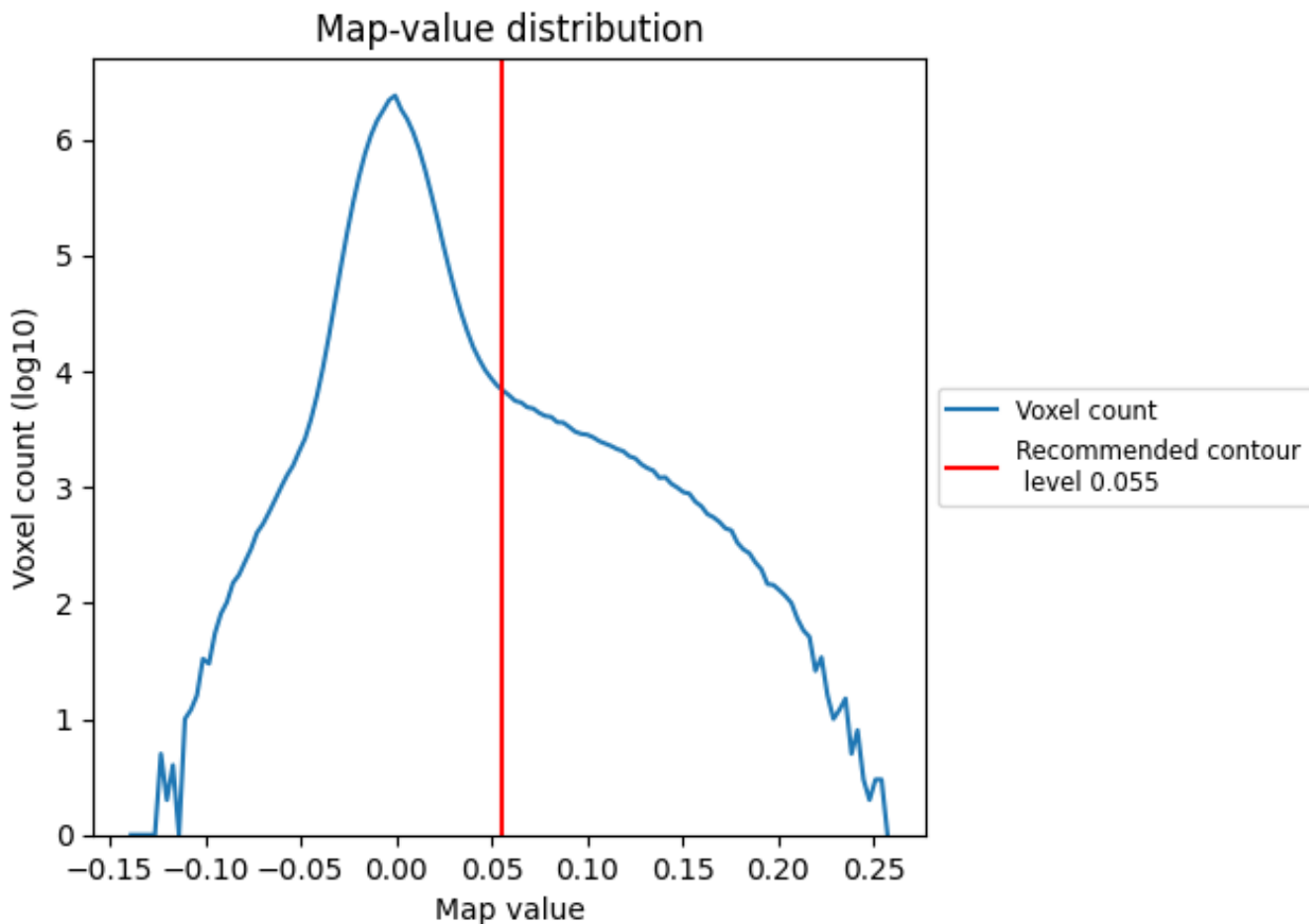


Z

7 Map analysis [i](#)

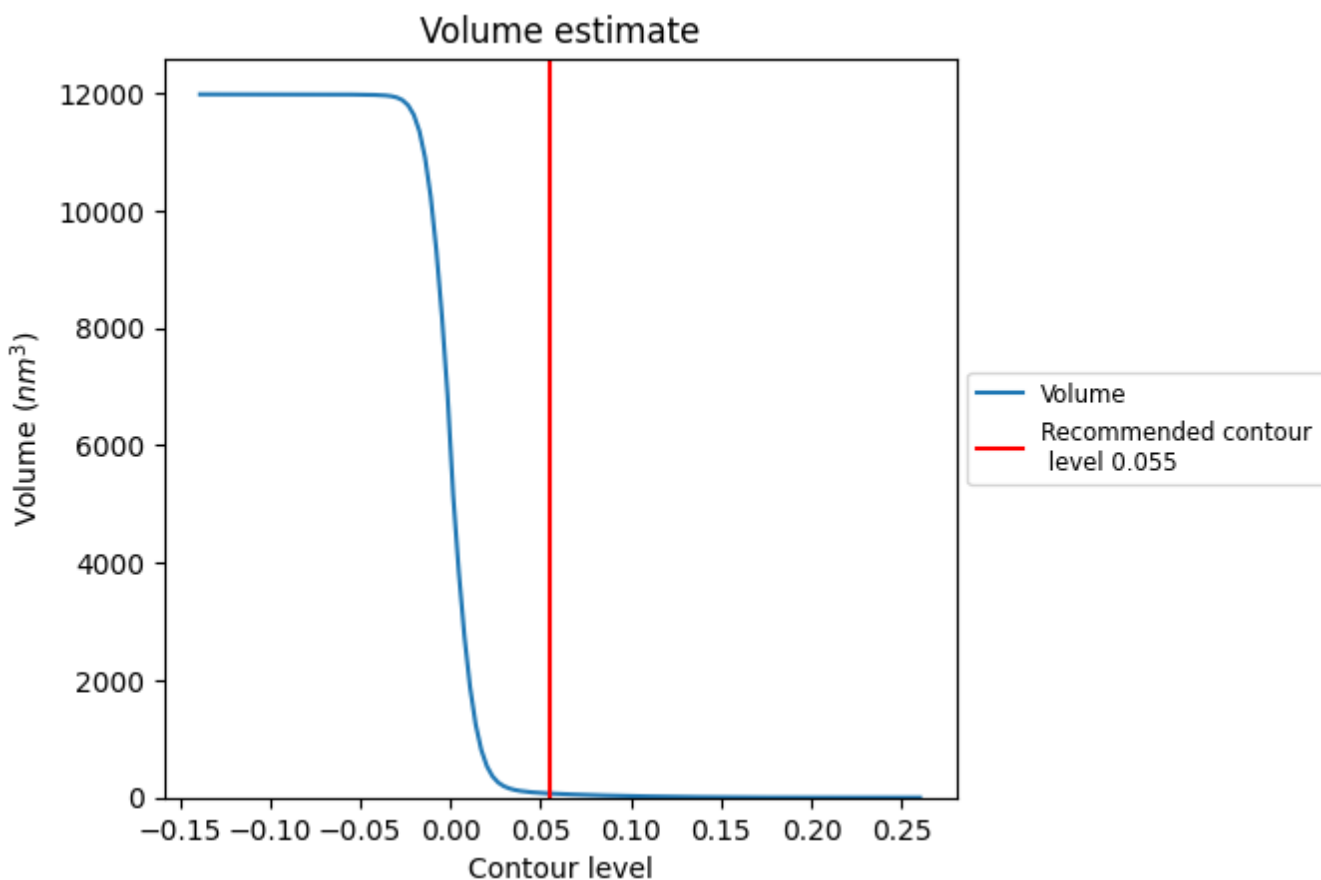
This section contains the results of statistical analysis of the map.

7.1 Map-value distribution [i](#)



The map-value distribution is plotted in 128 intervals along the x-axis. The y-axis is logarithmic. A spike in this graph at zero usually indicates that the volume has been masked.

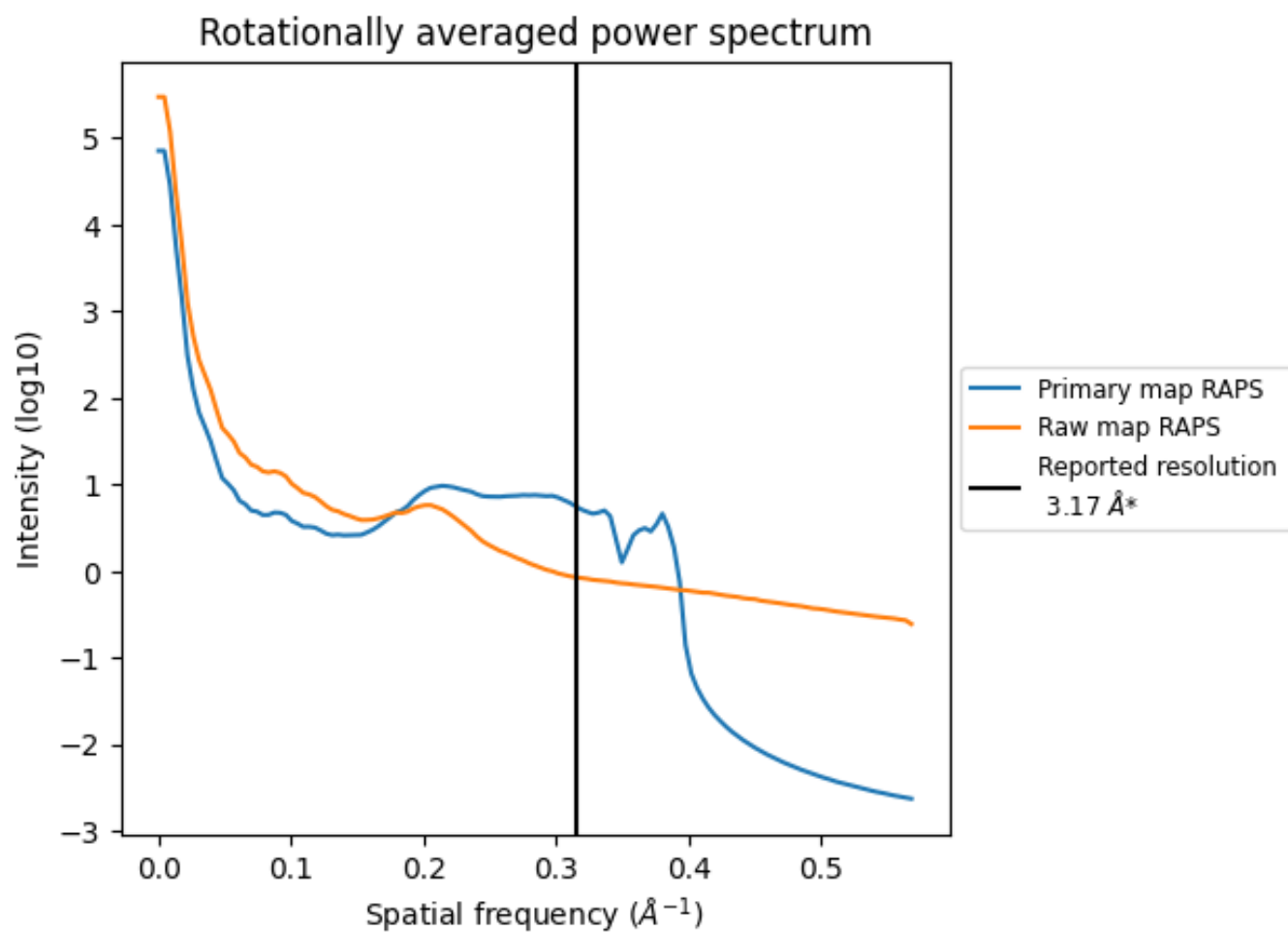
7.2 Volume estimate [i](#)



The volume at the recommended contour level is 70 nm³; this corresponds to an approximate mass of 63 kDa.

The volume estimate graph shows how the enclosed volume varies with the contour level. The recommended contour level is shown as a vertical line and the intersection between the line and the curve gives the volume of the enclosed surface at the given level.

7.3 Rotationally averaged power spectrum [i](#)

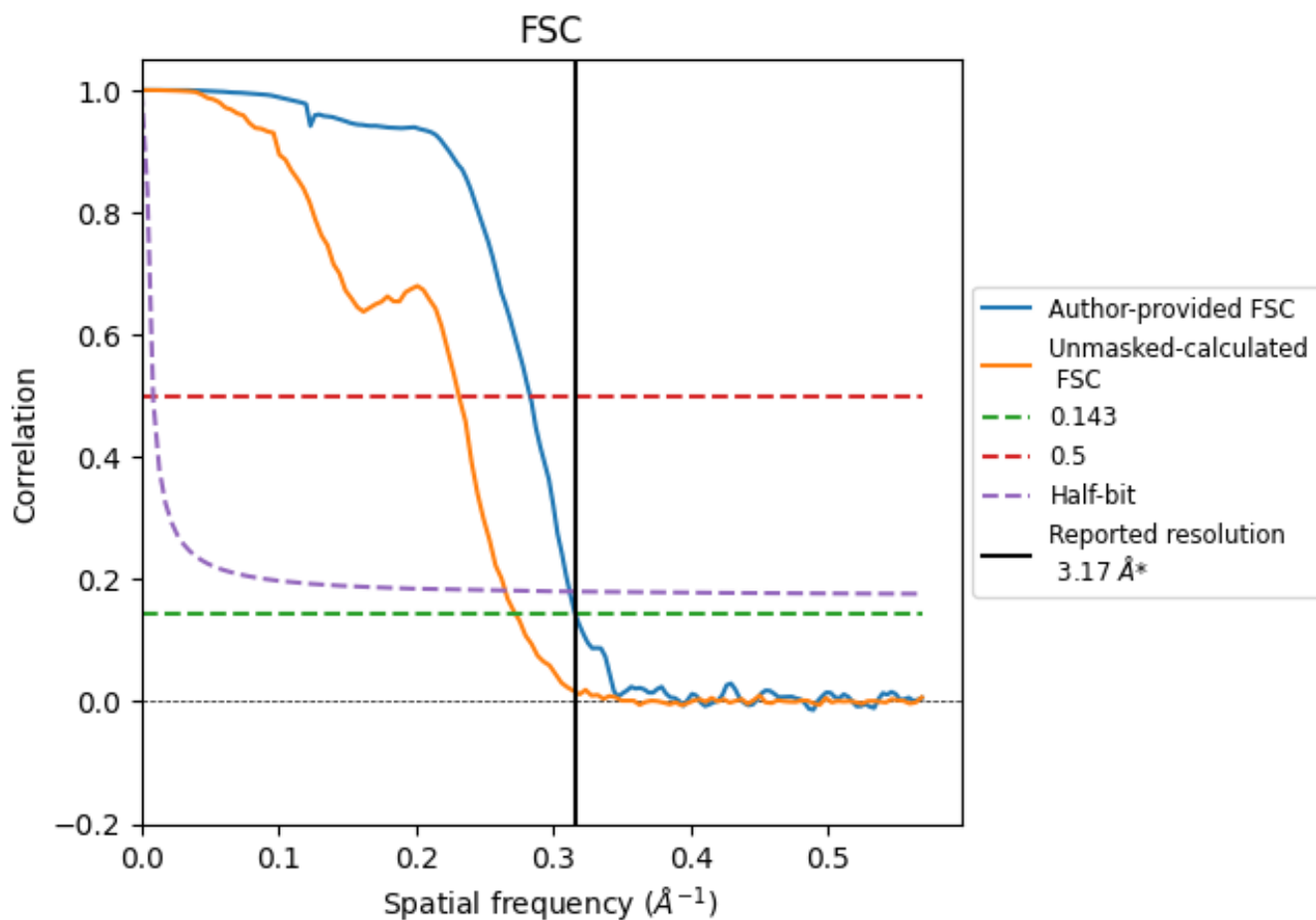


*Reported resolution corresponds to spatial frequency of 0.315 \AA^{-1}

8 Fourier-Shell correlation [i](#)

Fourier-Shell Correlation (FSC) is the most commonly used method to estimate the resolution of single-particle and subtomogram-averaged maps. The shape of the curve depends on the imposed symmetry, mask and whether or not the two 3D reconstructions used were processed from a common reference. The reported resolution is shown as a black line. A curve is displayed for the half-bit criterion in addition to lines showing the 0.143 gold standard cut-off and 0.5 cut-off.

8.1 FSC [i](#)



*Reported resolution corresponds to spatial frequency of 0.315 Å⁻¹

8.2 Resolution estimates [i](#)

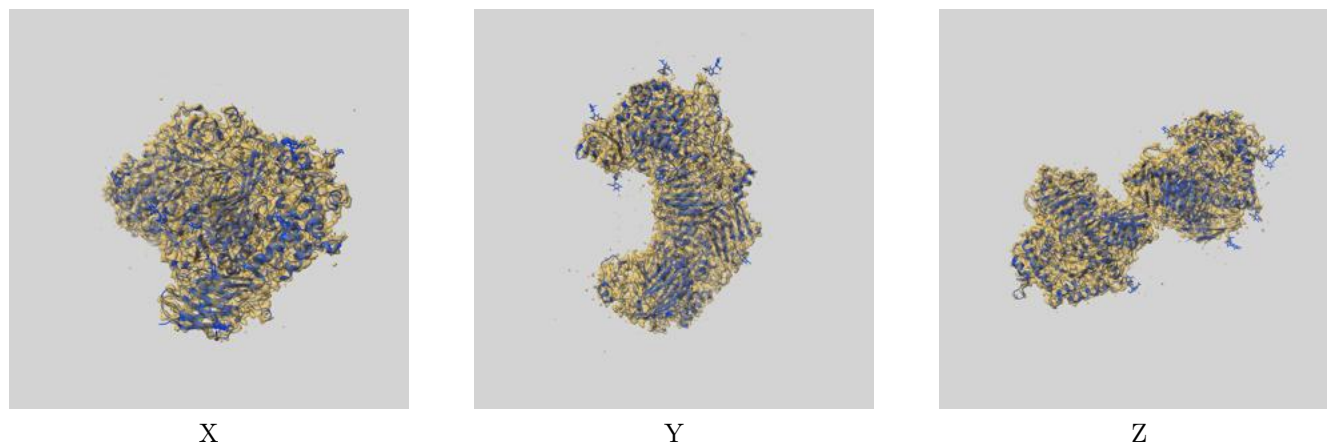
Resolution estimate (Å)	Estimation criterion (FSC cut-off)		
	0.143	0.5	Half-bit
Reported by author	3.17	-	-
Author-provided FSC curve	3.17	3.53	3.20
Unmasked-calculated*	3.67	4.33	3.78

*Resolution estimate based on FSC curve calculated by comparison of deposited half-maps. The value from deposited half-maps intersecting FSC 0.143 CUT-OFF 3.67 differs from the reported value 3.17 by more than 10 %

9 Map-model fit [i](#)

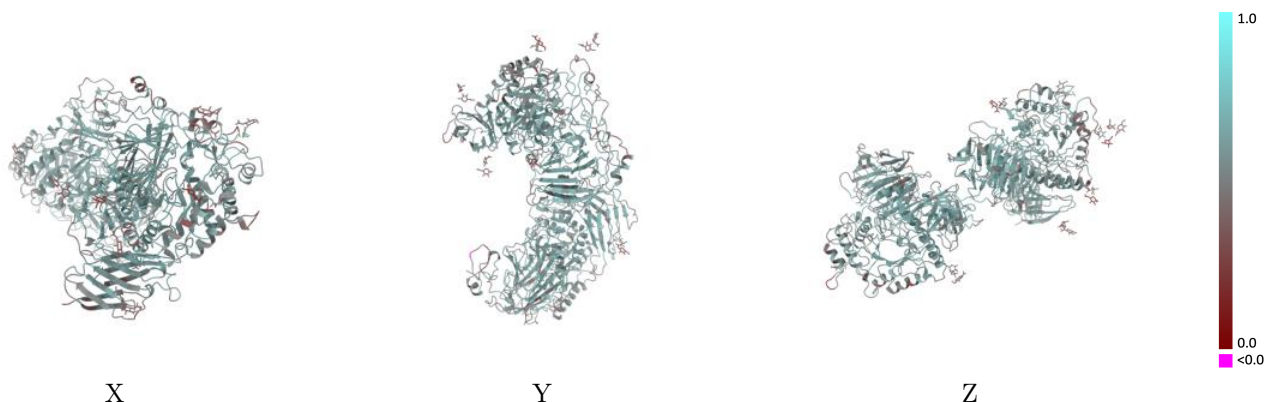
This section contains information regarding the fit between EMDB map EMD-62652 and PDB model 9KZ6. Per-residue inclusion information can be found in section 3 on page 6.

9.1 Map-model overlay [i](#)



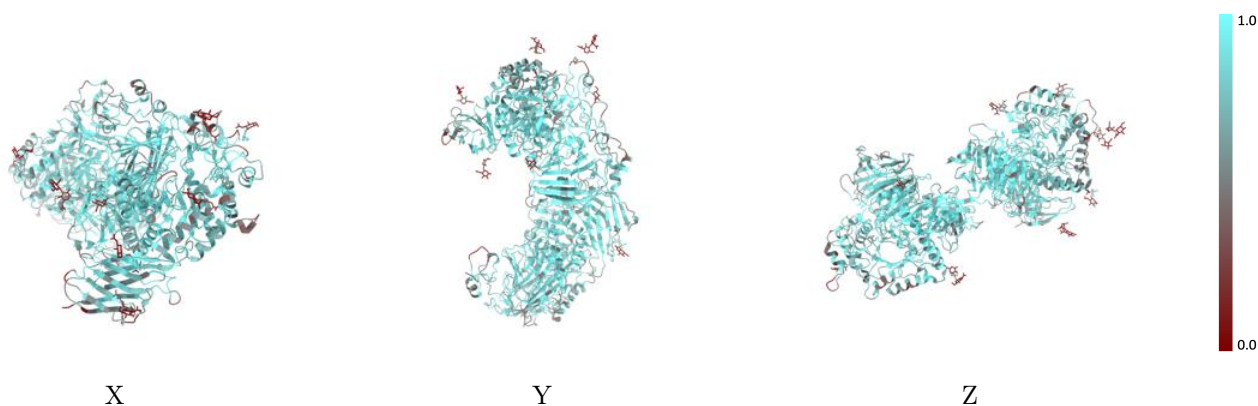
The images above show the 3D surface view of the map at the recommended contour level 0.055 at 50% transparency in yellow overlaid with a ribbon representation of the model coloured in blue. These images allow for the visual assessment of the quality of fit between the atomic model and the map.

9.2 Q-score mapped to coordinate model [i](#)



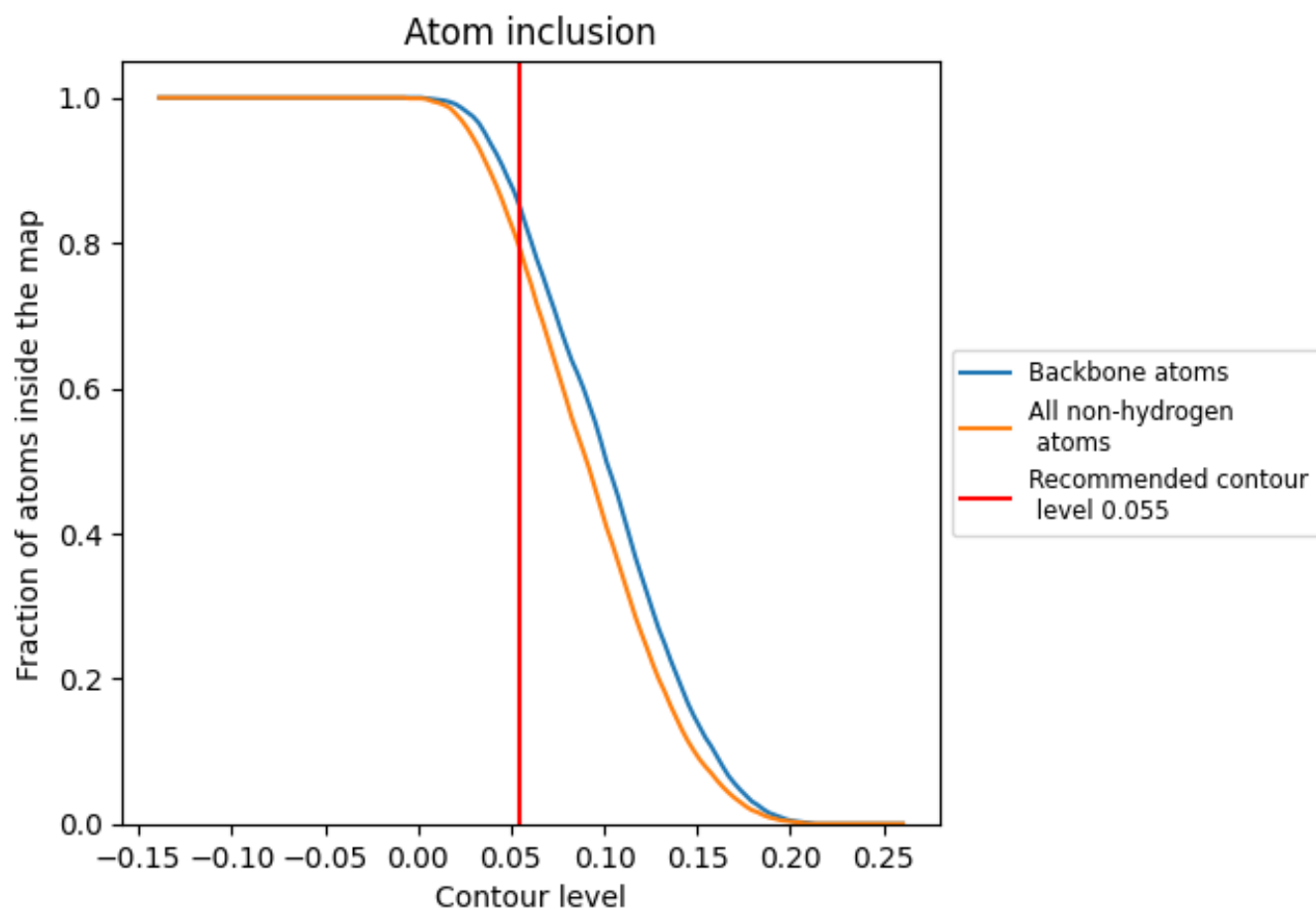
The images above show the model with each residue coloured according its Q-score. This shows their resolvability in the map with higher Q-score values reflecting better resolvability. Please note: Q-score is calculating the resolvability of atoms, and thus high values are only expected at resolutions at which atoms can be resolved. Low Q-score values may therefore be expected for many entries.

9.3 Atom inclusion mapped to coordinate model [i](#)



The images above show the model with each residue coloured according to its atom inclusion. This shows to what extent they are inside the map at the recommended contour level (0.055).

























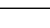
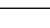
9.4 Atom inclusion [i](#)



At the recommended contour level, 85% of all backbone atoms, 79% of all non-hydrogen atoms, are inside the map.

9.5 Map-model fit summary

The table lists the average atom inclusion at the recommended contour level (0.055) and Q-score for the entire model and for each chain.

Chain	Atom inclusion	Q-score
All	 0.7900	 0.5650
A	 0.8030	 0.5690
B	 0.2500	 0.4410
C	 0.2100	 0.4140
D	 0.3930	 0.3630
E	 0.1430	 0.3080
F	 0.4640	 0.4940
G	 0.0710	 0.3530
H	 0.2140	 0.2840
I	 0.3930	 0.3360
J	 0.0710	 0.3230
K	 0.1430	 0.3650
L	 0.1430	 0.3680

