



# Full wwPDB X-ray Structure Validation Report ⓘ

Mar 7, 2026 – 01:11 AM UTC

PDB ID : 9KJL / pdb\_00009kjl  
Title : The mTREX1-NSC 37204 complex structure by soaking in Soaking Condition 3 (NSC 37204 complex 2)  
Authors : Hsiao, Y.Y.; Huang, K.W.; Wu, C.Y.; Tsai, C.Y.; Wu, M.T.  
Deposited on : 2024-11-12  
Resolution : 1.70 Å (reported)

This is a Full wwPDB X-ray Structure Validation Report for a publicly released PDB entry.

We welcome your comments at [validation@mail.wwpdb.org](mailto:validation@mail.wwpdb.org)

A user guide is available at

<https://www.wwpdb.org/validation/2017/XrayValidationReportHelp>

with specific help available everywhere you see the ⓘ symbol.

The types of validation reports are described at

<http://www.wwpdb.org/validation/2017/FAQs#types>.

---

The following versions of software and data (see [references ⓘ](#)) were used in the production of this report:

MolProbity : 4-5-2 with Phenix2.0  
Mogul : 2022.3.0, CSD as543be (2022)  
Xtriage (Phenix) : 2.0  
EDS : 3.0  
Buster-report : wwPDB partial adaption of 1.1.7 (2018)  
Percentile statistics : 20250101.v01 (using entries in the PDB archive January 1st 2025)  
CCP4 : 9.0.010 (Gargrove)  
Density-Fitness : 1.0.12  
Ideal geometry (proteins) : Engh & Huber (2001)  
Ideal geometry (DNA, RNA) : Parkinson et al. (1996)  
Validation Pipeline (wwPDB-VP) : 2.49

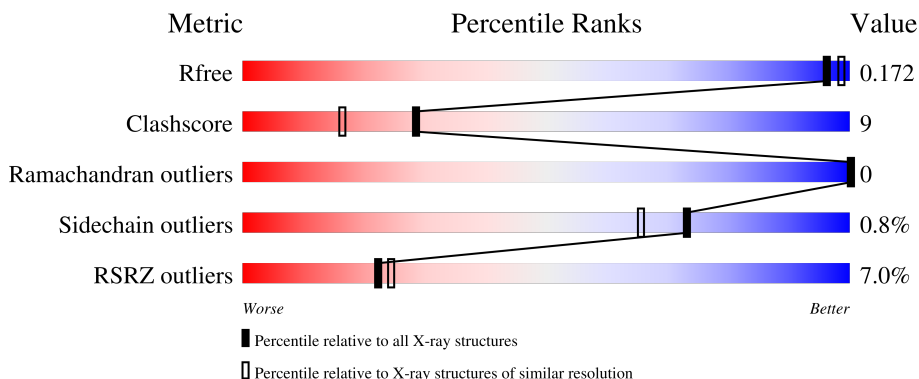
# 1 Overall quality at a glance

The following experimental techniques were used to determine the structure:

*X-RAY DIFFRACTION*

The reported resolution of this entry is 1.70 Å.

Percentile scores (ranging between 0-100) for global validation metrics of the entry are shown in the following graphic. The table shows the number of entries on which the scores are based.



Metric	Whole archive (#Entries)	Similar resolution (#Entries, resolution range(Å))
$R_{free}$	180053	5551 (1.70-1.70)
Clashscore	190562	5924 (1.70-1.70)
Ramachandran outliers	187476	5846 (1.70-1.70)
Sidechain outliers	187428	5846 (1.70-1.70)
RSRZ outliers	180081	5554 (1.70-1.70)

The table below summarises the geometric issues observed across the polymeric chains and their fit to the electron density. The red, orange, yellow and green segments of the lower bar indicate the fraction of residues that contain outliers for  $\geq 3$ , 2, 1 and 0 types of geometric quality criteria respectively. A grey segment represents the fraction of residues that are not modelled. The numeric value for each fraction is indicated below the corresponding segment, with a dot representing fractions  $\leq 5\%$ . The upper red bar (where present) indicates the fraction of residues that have poor fit to the electron density. The numeric value is given above the bar.

Mol	Chain	Length	Quality of chain
1	A	252	 6% 79% 10% • 10%
1	B	252	 7% 73% 18% 9%

## 2 Entry composition [i](#)

There are 6 unique types of molecules in this entry. The entry contains 7725 atoms, of which 3686 are hydrogens and 0 are deuteriums.

In the tables below, the ZeroOcc column contains the number of atoms modelled with zero occupancy, the AltConf column contains the number of residues with at least one atom in alternate conformation and the Trace column contains the number of residues modelled with at most 2 atoms.

- Molecule 1 is a protein called Three-prime repair exonuclease 1.

Mol	Chain	Residues	Atoms					ZeroOcc	AltConf	Trace	
			Total	C	H	N	O				S
1	B	230	3635	1141	1825	320	338	11	0	10	0
1	A	227	3552	1118	1780	311	333	10	0	8	0

There are 40 discrepancies between the modelled and reference sequences:

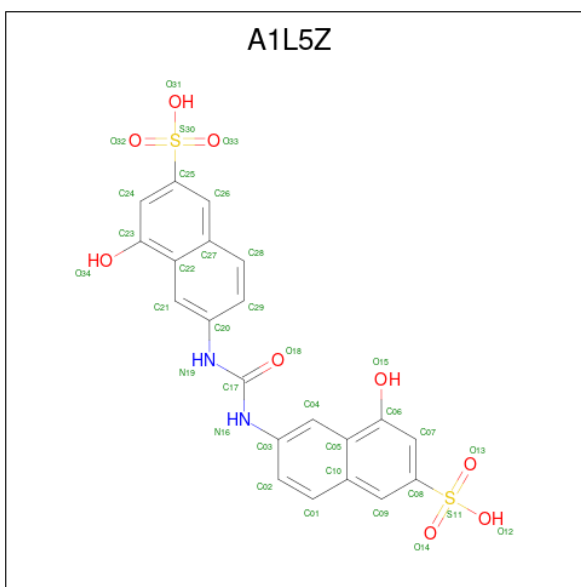
Chain	Residue	Modelled	Actual	Comment	Reference
B	-9	MET	-	initiating methionine	UNP Q91XB0
B	-8	GLY	-	expression tag	UNP Q91XB0
B	-7	SER	-	expression tag	UNP Q91XB0
B	-6	SER	-	expression tag	UNP Q91XB0
B	-5	HIS	-	expression tag	UNP Q91XB0
B	-4	HIS	-	expression tag	UNP Q91XB0
B	-3	HIS	-	expression tag	UNP Q91XB0
B	-2	HIS	-	expression tag	UNP Q91XB0
B	-1	HIS	-	expression tag	UNP Q91XB0
B	0	HIS	-	expression tag	UNP Q91XB0
B	1	SER	-	expression tag	UNP Q91XB0
B	2	SER	-	expression tag	UNP Q91XB0
B	3	GLY	-	expression tag	UNP Q91XB0
B	4	LEU	-	expression tag	UNP Q91XB0
B	5	VAL	-	expression tag	UNP Q91XB0
B	6	PRO	-	expression tag	UNP Q91XB0
B	7	ARG	-	expression tag	UNP Q91XB0
B	8	GLY	-	expression tag	UNP Q91XB0
B	9	SER	-	expression tag	UNP Q91XB0
B	10	HIS	-	expression tag	UNP Q91XB0
A	-9	MET	-	initiating methionine	UNP Q91XB0
A	-8	GLY	-	expression tag	UNP Q91XB0
A	-7	SER	-	expression tag	UNP Q91XB0
A	-6	SER	-	expression tag	UNP Q91XB0
A	-5	HIS	-	expression tag	UNP Q91XB0

*Continued on next page...*

Continued from previous page...

Chain	Residue	Modelled	Actual	Comment	Reference
A	-4	HIS	-	expression tag	UNP Q91XB0
A	-3	HIS	-	expression tag	UNP Q91XB0
A	-2	HIS	-	expression tag	UNP Q91XB0
A	-1	HIS	-	expression tag	UNP Q91XB0
A	0	HIS	-	expression tag	UNP Q91XB0
A	1	SER	-	expression tag	UNP Q91XB0
A	2	SER	-	expression tag	UNP Q91XB0
A	3	GLY	-	expression tag	UNP Q91XB0
A	4	LEU	-	expression tag	UNP Q91XB0
A	5	VAL	-	expression tag	UNP Q91XB0
A	6	PRO	-	expression tag	UNP Q91XB0
A	7	ARG	-	expression tag	UNP Q91XB0
A	8	GLY	-	expression tag	UNP Q91XB0
A	9	SER	-	expression tag	UNP Q91XB0
A	10	HIS	-	expression tag	UNP Q91XB0

- Molecule 2 is 4-oxidanyl-6-[(8-oxidanyl-6-sulfo-naphthalen-2-yl)carbamoylamino]naphthalene-2-sulfonic acid (CCD ID: A1L5Z) (formula: C<sub>21</sub>H<sub>16</sub>N<sub>2</sub>O<sub>9</sub>S<sub>2</sub>) (labeled as "Ligand of Interest" by depositor).



Mol	Chain	Residues	Atoms					ZeroOcc	AltConf	
			Total	C	H	N	O			S
2	B	1	48	21	14	2	9	2	0	0

- Molecule 3 is GLYCEROL (CCD ID: GOL) (formula: C<sub>3</sub>H<sub>8</sub>O<sub>3</sub>).



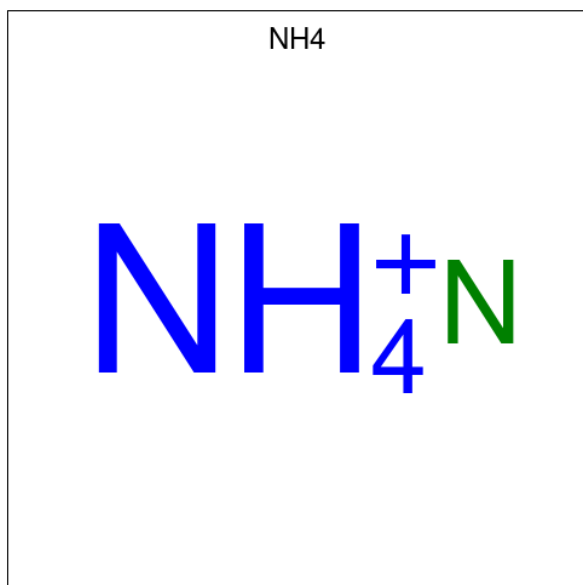
Mol	Chain	Residues	Atoms			ZeroOcc	AltConf	
3	B	1	Total	C	H	O	0	0
			13	3	7	3		
3	B	1	Total	C	H	O	0	0
			14	3	8	3		
3	B	1	Total	C	H	O	0	0
			14	3	8	3		
3	B	1	Total	C	H	O	0	0
			14	3	8	3		
3	A	1	Total	C	H	O	0	0
			14	3	8	3		
3	A	1	Total	C	H	O	0	0
			14	3	8	3		

- Molecule 4 is SULFATE ION (CCD ID: SO4) (formula: O<sub>4</sub>S).



Mol	Chain	Residues	Atoms			ZeroOcc	AltConf
4	B	1	Total	O	S	0	0
			5	4	1		
4	B	1	Total	O	S	0	0
			5	4	1		
4	B	1	Total	O	S	0	0
			5	4	1		
4	A	1	Total	O	S	0	0
			5	4	1		
4	A	1	Total	O	S	0	0
			5	4	1		
4	A	1	Total	O	S	0	0
			5	4	1		

- Molecule 5 is AMMONIUM ION (CCD ID: NH4) (formula: H<sub>4</sub>N).



Mol	Chain	Residues	Atoms	ZeroOcc	AltConf
5	B	1	Total H N 5 4 1	0	0
5	B	1	Total H N 5 4 1	0	0
5	A	1	Total H N 5 4 1	0	0

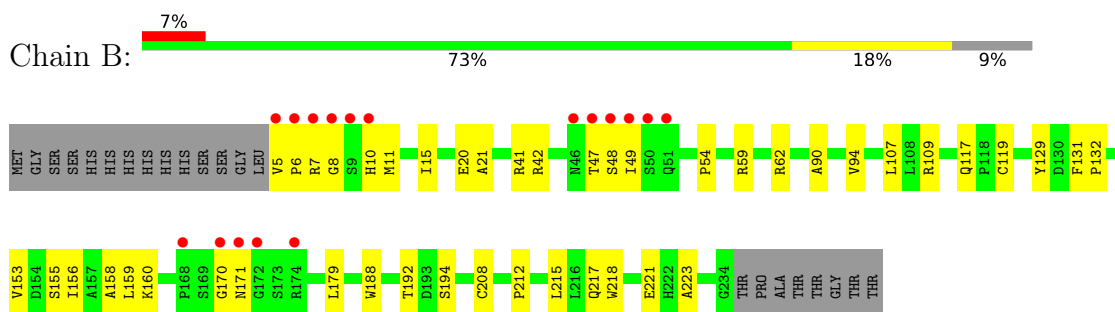
- Molecule 6 is water.

Mol	Chain	Residues	Atoms	ZeroOcc	AltConf
6	B	185	Total O 185 185	0	0
6	A	163	Total O 163 163	0	0

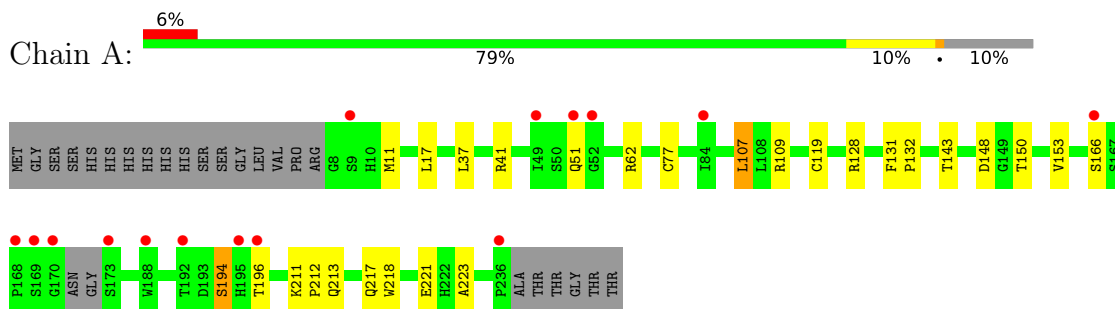
### 3 Residue-property plots [i](#)

These plots are drawn for all protein, RNA, DNA and oligosaccharide chains in the entry. The first graphic for a chain summarises the proportions of the various outlier classes displayed in the second graphic. The second graphic shows the sequence view annotated by issues in geometry and electron density. Residues are color-coded according to the number of geometric quality criteria for which they contain at least one outlier: green = 0, yellow = 1, orange = 2 and red = 3 or more. A red dot above a residue indicates a poor fit to the electron density ( $RSRZ > 2$ ). Stretches of 2 or more consecutive residues without any outlier are shown as a green connector. Residues present in the sample, but not in the model, are shown in grey.

- Molecule 1: Three-prime repair exonuclease 1



- Molecule 1: Three-prime repair exonuclease 1



## 4 Data and refinement statistics

Property	Value	Source
Space group	P 21 21 21	Depositor
Cell constants a, b, c, $\alpha$ , $\beta$ , $\gamma$	76.06Å 83.08Å 88.00Å 90.00° 90.00° 90.00°	Depositor
Resolution (Å)	24.25 – 1.70 24.25 – 1.70	Depositor EDS
% Data completeness (in resolution range)	99.7 (24.25-1.70) 99.7 (24.25-1.70)	Depositor EDS
$R_{merge}$	0.05	Depositor
$R_{sym}$	(Not available)	Depositor
$\langle I/\sigma(I) \rangle$ <sup>1</sup>	4.44 (at 1.71Å)	Xtrriage
Refinement program	PHENIX (1.19.2_4158: ???)	Depositor
R, $R_{free}$	0.150 , 0.171 0.152 , 0.172	Depositor DCC
$R_{free}$ test set	4641 reflections (7.49%)	wwPDB-VP
Wilson B-factor (Å <sup>2</sup> )	20.6	Xtrriage
Anisotropy	0.231	Xtrriage
Bulk solvent $k_{sol}$ (e/Å <sup>3</sup> ), $B_{sol}$ (Å <sup>2</sup> )	0.45 , 52.8	EDS
L-test for twinning <sup>2</sup>	$\langle  L  \rangle = 0.49$ , $\langle L^2 \rangle = 0.32$	Xtrriage
Estimated twinning fraction	No twinning to report.	Xtrriage
$F_o, F_c$ correlation	0.97	EDS
Total number of atoms	7725	wwPDB-VP
Average B, all atoms (Å <sup>2</sup> )	35.0	wwPDB-VP

Xtrriage's analysis on translational NCS is as follows: *The largest off-origin peak in the Patterson function is 5.50% of the height of the origin peak. No significant pseudotranslation is detected.*

<sup>1</sup>Intensities estimated from amplitudes.

<sup>2</sup>Theoretical values of  $\langle |L| \rangle$ ,  $\langle L^2 \rangle$  for acentric reflections are 0.5, 0.333 respectively for untwinned datasets, and 0.375, 0.2 for perfectly twinned datasets.

## 5 Model quality [i](#)

### 5.1 Standard geometry [i](#)

Bond lengths and bond angles in the following residue types are not validated in this section: NH4, SO4, A1L5Z, GOL

The Z score for a bond length (or angle) is the number of standard deviations the observed value is removed from the expected value. A bond length (or angle) with  $|Z| > 5$  is considered an outlier worth inspection. RMSZ is the root-mean-square of all Z scores of the bond lengths (or angles).

Mol	Chain	Bond lengths		Bond angles	
		RMSZ	# Z  >5	RMSZ	# Z  >5
1	A	0.45	0/1848	0.62	0/2520
1	B	0.49	0/1893	0.67	0/2581
All	All	0.47	0/3741	0.65	0/5101

Chiral center outliers are detected by calculating the chiral volume of a chiral center and verifying if the center is modelled as a planar moiety or with the opposite hand. A planarity outlier is detected by checking planarity of atoms in a peptide group, atoms in a mainchain group or atoms of a sidechain that are expected to be planar.

Mol	Chain	#Chirality outliers	#Planarity outliers
1	B	0	1

There are no bond length outliers.

There are no bond angle outliers.

There are no chirality outliers.

All (1) planarity outliers are listed below:

Mol	Chain	Res	Type	Group
1	B	48	SER	Peptide

### 5.2 Too-close contacts [i](#)

In the following table, the Non-H and H(model) columns list the number of non-hydrogen atoms and hydrogen atoms in the chain respectively. The H(added) column lists the number of hydrogen atoms added and optimized by MolProbity. The Clashes column lists the number of clashes within the asymmetric unit, whereas Symm-Clashes lists symmetry-related clashes.

Mol	Chain	Non-H	H(model)	H(added)	Clashes	Symm-Clashes
1	A	1772	1780	1747	28	1
1	B	1810	1825	1781	38	1
2	B	34	14	0	0	0
3	A	18	24	24	4	0
3	B	24	31	30	4	0
4	A	15	0	0	2	0
4	B	15	0	0	0	0
5	A	1	4	0	0	0
5	B	2	8	0	0	0
6	A	163	0	0	6	0
6	B	185	0	0	8	0
All	All	4039	3686	3582	65	1

The all-atom clashscore is defined as the number of clashes found per 1000 atoms (including hydrogen atoms). The all-atom clashscore for this structure is 9.

All (65) close contacts within the same asymmetric unit are listed below, sorted by their clash magnitude.

Atom-1	Atom-2	Interatomic distance (Å)	Clash overlap (Å)
1:B:107[B]:LEU:HD12	1:A:107[B]:LEU:HD12	1.42	0.98
1:B:20:GLU:OE2	6:B:401:HOH:O	1.95	0.85
1:A:153[B]:VAL:HG11	1:A:218:TRP:HZ3	1.40	0.84
1:B:107[B]:LEU:CD1	1:A:107[B]:LEU:HD12	2.17	0.75
4:A:301:SO4:O2	6:A:401:HOH:O	2.06	0.74
1:B:107[B]:LEU:HD12	1:A:107[B]:LEU:CD1	2.15	0.73
1:A:194:SER:O	6:A:402:HOH:O	2.08	0.71
1:A:217:GLN:OE1	6:A:403:HOH:O	2.09	0.70
1:B:62:ARG:H	3:B:302:GOL:H31	1.54	0.69
1:B:8:GLY:O	6:B:402:HOH:O	2.09	0.69
1:B:15:ILE:HG13	1:B:119[C]:CYS:SG	2.32	0.69
1:B:5:VAL:HG22	1:B:117:GLN:HB2	1.74	0.69
1:B:90:ALA:O	1:B:94:VAL:HG13	1.93	0.67
1:B:59:ARG:HH11	1:B:59:ARG:HG2	1.60	0.67
1:A:217:GLN:O	1:A:221:GLU:HG3	1.97	0.64
1:A:196:THR:HG23	6:A:402:HOH:O	1.99	0.61
3:A:302:GOL:H11	6:A:514:HOH:O	2.00	0.60
1:A:153[B]:VAL:HG11	1:A:218:TRP:CZ3	2.30	0.59
1:A:153[B]:VAL:HG22	1:A:223:ALA:HA	1.84	0.58
1:B:217:GLN:O	1:B:221:GLU:HG3	2.04	0.57
1:A:153[B]:VAL:CG1	1:A:218:TRP:HZ3	2.14	0.56
1:A:213:GLN:HB3	3:A:305:GOL:H11	1.87	0.56
1:B:5:VAL:CG2	1:B:117:GLN:HB2	2.35	0.55

*Continued on next page...*

*Continued from previous page...*

Atom-1	Atom-2	Interatomic distance (Å)	Clash overlap (Å)
1:B:179:LEU:H	3:B:306:GOL:H12	1.73	0.53
1:B:62:ARG:H	3:B:302:GOL:C3	2.21	0.52
1:B:208:CYS:HB3	1:B:215:LEU:HD22	1.92	0.52
1:B:11:MET:O	1:B:41:ARG:HD2	2.10	0.52
1:B:10:HIS:N	6:B:408:HOH:O	2.42	0.51
1:B:153:VAL:CG1	1:B:223:ALA:HA	2.39	0.51
1:B:10:HIS:CA	6:B:408:HOH:O	2.58	0.51
1:B:15:ILE:CD1	1:B:119[C]:CYS:SG	2.99	0.51
1:B:153:VAL:HG12	1:B:223:ALA:HA	1.92	0.51
1:A:128:ARG:HG3	6:A:404:HOH:O	2.11	0.51
1:B:179:LEU:H	3:B:306:GOL:C1	2.24	0.51
1:B:42:ARG:NE	6:B:410:HOH:O	2.45	0.50
1:B:49:ILE:O	1:B:49:ILE:HG13	2.12	0.49
1:A:37:LEU:C	1:A:37:LEU:HD23	2.37	0.49
1:B:6:PRO:O	1:B:7:ARG:C	2.52	0.49
1:B:47:THR:HB	1:B:212:PRO:HG3	1.94	0.49
1:B:5:VAL:HG22	1:B:117:GLN:CB	2.40	0.48
1:B:21:ALA:HB3	1:B:129:TYR:OH	2.12	0.48
1:A:11:MET:O	1:A:41:ARG:HD2	2.14	0.48
1:A:131:PHE:HB2	1:A:132:PRO:HD3	1.95	0.48
1:A:153[B]:VAL:CG2	1:A:223:ALA:HA	2.45	0.46
1:B:47:THR:O	6:B:403:HOH:O	2.21	0.46
1:B:192:THR:HG23	6:B:428:HOH:O	2.17	0.45
1:A:62:ARG:HB3	3:A:302:GOL:H31	1.98	0.45
1:B:15:ILE:CG1	1:B:119[C]:CYS:SG	3.04	0.44
1:A:166:SER:OG	1:A:211:LYS:NZ	2.44	0.44
1:A:51:GLN:O	1:A:51:GLN:CG	2.66	0.44
1:A:212:PRO:HD2	3:A:305:GOL:H2	2.01	0.43
1:A:77:CYS:HB2	4:A:306:SO4:O1	2.19	0.42
1:A:153[B]:VAL:CG1	1:A:218:TRP:CZ3	2.97	0.42
1:A:11:MET:HE3	1:A:223:ALA:CB	2.49	0.42
1:B:170:GLY:HA2	1:B:171:ASN:HA	1.86	0.42
1:B:54:PRO:HG3	1:B:188:TRP:CD2	2.55	0.42
1:B:155:SER:O	1:B:159:LEU:HG	2.20	0.41
1:B:131:PHE:HB2	1:B:132:PRO:HD3	2.02	0.41
1:A:153[A]:VAL:CG1	1:A:223:ALA:HA	2.50	0.41
1:B:158:ALA:HB2	1:B:218:TRP:CZ3	2.56	0.41
1:B:109:ARG:HD2	6:B:513:HOH:O	2.20	0.40
1:A:109:ARG:NH2	1:A:143:THR:HG22	2.36	0.40
1:A:17:LEU:C	1:A:17:LEU:HD23	2.47	0.40
1:B:156:ILE:O	1:B:160:LYS:HG3	2.21	0.40

*Continued on next page...*

Continued from previous page...

Atom-1	Atom-2	Interatomic distance (Å)	Clash overlap (Å)
1:A:119[A]:CYS:O	1:A:150[A]:THR:HG23	2.21	0.40

All (1) symmetry-related close contacts are listed below. The label for Atom-2 includes the symmetry operator and encoded unit-cell translations to be applied.

Atom-1	Atom-2	Interatomic distance (Å)	Clash overlap (Å)
1:B:6:PRO:O	1:A:148:ASP:O[3_555]	2.17	0.03

## 5.3 Torsion angles [i](#)

### 5.3.1 Protein backbone [i](#)

In the following table, the Percentiles column shows the percent Ramachandran outliers of the chain as a percentile score with respect to all X-ray entries followed by that with respect to entries of similar resolution.

The Analysed column shows the number of residues for which the backbone conformation was analysed, and the total number of residues.

Mol	Chain	Analysed	Favoured	Allowed	Outliers	Percentiles	
1	A	231/252 (92%)	230 (100%)	1 (0%)	0	100	100
1	B	239/252 (95%)	236 (99%)	3 (1%)	0	100	100
All	All	470/504 (93%)	466 (99%)	4 (1%)	0	100	100

There are no Ramachandran outliers to report.

### 5.3.2 Protein sidechains [i](#)

In the following table, the Percentiles column shows the percent sidechain outliers of the chain as a percentile score with respect to all X-ray entries followed by that with respect to entries of similar resolution.

The Analysed column shows the number of residues for which the sidechain conformation was analysed, and the total number of residues.

Mol	Chain	Analysed	Rotameric	Outliers	Percentiles	
1	A	203/215 (94%)	200 (98%)	3 (2%)	57	43
1	B	207/215 (96%)	206 (100%)	1 (0%)	81	76

Continued on next page...

*Continued from previous page...*

Mol	Chain	Analysed	Rotameric	Outliers	Percentiles
All	All	410/430 (95%)	406 (99%)	4 (1%)	73 58

All (4) residues with a non-rotameric sidechain are listed below:

Mol	Chain	Res	Type
1	B	194	SER
1	A	107[A]	LEU
1	A	107[B]	LEU
1	A	194	SER

Sometimes sidechains can be flipped to improve hydrogen bonding and reduce clashes. All (5) such sidechains are listed below:

Mol	Chain	Res	Type
1	A	53	HIS
1	A	113	GLN
1	A	117	GLN
1	A	164	GLN
1	A	217	GLN

### 5.3.3 RNA [i](#)

There are no RNA molecules in this entry.

### 5.4 Non-standard residues in protein, DNA, RNA chains [i](#)

There are no non-standard protein/DNA/RNA residues in this entry.

### 5.5 Carbohydrates [i](#)

There are no oligosaccharides in this entry.

### 5.6 Ligand geometry [i](#)

Of 17 ligands modelled in this entry, 3 are modelled with single atom - leaving 14 for Mogul analysis.

In the following table, the Counts columns list the number of bonds (or angles) for which Mogul statistics could be retrieved, the number of bonds (or angles) that are observed in the model and the number of bonds (or angles) that are defined in the Chemical Component Dictionary. The

Link column lists molecule types, if any, to which the group is linked. The Z score for a bond length (or angle) is the number of standard deviations the observed value is removed from the expected value. A bond length (or angle) with  $|Z| > 2$  is considered an outlier worth inspection. RMSZ is the root-mean-square of all Z scores of the bond lengths (or angles).

Mol	Type	Chain	Res	Link	Bond lengths			Bond angles		
					Counts	RMSZ	# Z  > 2	Counts	RMSZ	# Z  > 2
4	SO4	B	303	-	4,4,4	0.37	0	6,6,6	0.24	0
2	A1L5Z	B	301	-	37,37,37	1.61	8 (21%)	55,57,57	1.07	3 (5%)
3	GOL	A	302	-	5,5,5	0.88	0	5,5,5	1.15	1 (20%)
3	GOL	B	306	-	5,5,5	1.32	0	5,5,5	1.57	1 (20%)
4	SO4	A	306	-	4,4,4	0.43	0	6,6,6	0.68	0
3	GOL	B	305	-	5,5,5	0.95	0	5,5,5	1.20	0
4	SO4	A	301	-	4,4,4	0.19	0	6,6,6	0.15	0
3	GOL	B	307	-	5,5,5	0.69	0	5,5,5	0.88	0
4	SO4	A	303	-	4,4,4	0.24	0	6,6,6	0.23	0
4	SO4	B	304	-	4,4,4	0.25	0	6,6,6	0.08	0
3	GOL	A	304	-	5,5,5	0.58	0	5,5,5	1.12	0
4	SO4	B	308	-	4,4,4	0.20	0	6,6,6	0.21	0
3	GOL	B	302	-	5,5,5	1.35	1 (20%)	5,5,5	1.11	1 (20%)
3	GOL	A	305	-	5,5,5	0.67	0	5,5,5	1.07	0

In the following table, the Chirals column lists the number of chiral outliers, the number of chiral centers analysed, the number of these observed in the model and the number defined in the Chemical Component Dictionary. Similar counts are reported in the Torsion and Rings columns. '-' means no outliers of that kind were identified.

Mol	Type	Chain	Res	Link	Chirals	Torsions	Rings
2	A1L5Z	B	301	-	-	0/20/20/20	0/4/4/4
3	GOL	A	302	-	-	2/4/4/4	-
3	GOL	B	306	-	-	0/4/4/4	-
3	GOL	B	305	-	-	3/4/4/4	-
3	GOL	B	307	-	-	2/4/4/4	-
3	GOL	A	304	-	-	2/4/4/4	-
3	GOL	B	302	-	-	2/4/4/4	-
3	GOL	A	305	-	-	4/4/4/4	-

All (9) bond length outliers are listed below:

Mol	Chain	Res	Type	Atoms	Z	Observed(Å)	Ideal(Å)
2	B	301	A1L5Z	C17-N19	4.00	1.46	1.37
2	B	301	A1L5Z	C17-N16	3.62	1.45	1.37

*Continued on next page...*

Continued from previous page...

Mol	Chain	Res	Type	Atoms	Z	Observed(Å)	Ideal(Å)
2	B	301	A1L5Z	C05-C10	-2.62	1.38	1.43
2	B	301	A1L5Z	C22-C27	-2.58	1.38	1.43
3	B	302	GOL	O3-C3	-2.46	1.32	1.42
2	B	301	A1L5Z	C25-S30	2.31	1.81	1.77
2	B	301	A1L5Z	C08-S11	2.26	1.81	1.77
2	B	301	A1L5Z	C03-N16	2.25	1.46	1.41
2	B	301	A1L5Z	C20-N19	2.21	1.46	1.41

All (6) bond angle outliers are listed below:

Mol	Chain	Res	Type	Atoms	Z	Observed(°)	Ideal(°)
3	B	306	GOL	C3-C2-C1	-2.98	100.87	111.80
2	B	301	A1L5Z	O34-C23-C22	2.41	120.56	116.42
3	A	302	GOL	C3-C2-C1	-2.29	103.39	111.80
3	B	302	GOL	C3-C2-C1	-2.17	103.83	111.80
2	B	301	A1L5Z	O31-S30-O32	-2.17	101.50	111.55
2	B	301	A1L5Z	O15-C06-C05	2.02	119.89	116.42

There are no chirality outliers.

All (15) torsion outliers are listed below:

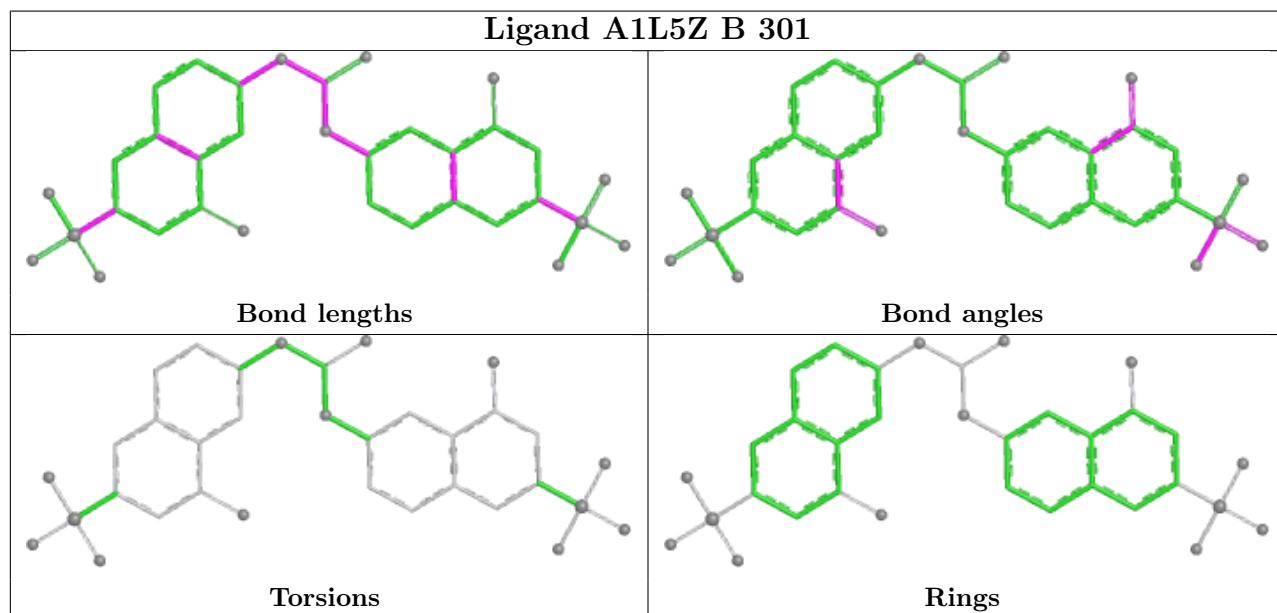
Mol	Chain	Res	Type	Atoms
3	B	302	GOL	O1-C1-C2-C3
3	B	305	GOL	O1-C1-C2-C3
3	B	307	GOL	O1-C1-C2-C3
3	A	305	GOL	O1-C1-C2-C3
3	A	305	GOL	C1-C2-C3-O3
3	A	305	GOL	O1-C1-C2-O2
3	A	302	GOL	O1-C1-C2-C3
3	A	304	GOL	O1-C1-C2-C3
3	B	302	GOL	O1-C1-C2-O2
3	B	307	GOL	O1-C1-C2-O2
3	A	305	GOL	O2-C2-C3-O3
3	B	305	GOL	O1-C1-C2-O2
3	A	304	GOL	O1-C1-C2-O2
3	A	302	GOL	O1-C1-C2-O2
3	B	305	GOL	O2-C2-C3-O3

There are no ring outliers.

6 monomers are involved in 10 short contacts:

Mol	Chain	Res	Type	Clashes	Symm-Clashes
3	A	302	GOL	2	0
3	B	306	GOL	2	0
4	A	306	SO4	1	0
4	A	301	SO4	1	0
3	B	302	GOL	2	0
3	A	305	GOL	2	0

The following is a two-dimensional graphical depiction of Mogul quality analysis of bond lengths, bond angles, torsion angles, and ring geometry for all instances of the Ligand of Interest. In addition, ligands with molecular weight > 250 and outliers as shown on the validation Tables will also be included. For torsion angles, if less than 5% of the Mogul distribution of torsion angles is within 10 degrees of the torsion angle in question, then that torsion angle is considered an outlier. Any bond that is central to one or more torsion angles identified as an outlier by Mogul will be highlighted in the graph. For rings, the root-mean-square deviation (RMSD) between the ring in question and similar rings identified by Mogul is calculated over all ring torsion angles. If the average RMSD is greater than 60 degrees and the minimal RMSD between the ring in question and any Mogul-identified rings is also greater than 60 degrees, then that ring is considered an outlier. The outliers are highlighted in purple. The color gray indicates Mogul did not find sufficient equivalents in the CSD to analyse the geometry.



## 5.7 Other polymers [\(i\)](#)

There are no such residues in this entry.

## 5.8 Polymer linkage issues [\(i\)](#)

There are no chain breaks in this entry.

## 6 Fit of model and data

### 6.1 Protein, DNA and RNA chains

In the following table, the column labelled ‘#RSRZ > 2’ contains the number (and percentage) of RSRZ outliers, followed by percent RSRZ outliers for the chain as percentile scores relative to all X-ray entries and entries of similar resolution. The OWAB column contains the minimum, median, 95<sup>th</sup> percentile and maximum values of the occupancy-weighted average B-factor per residue. The column labelled ‘Q < 0.9’ lists the number of (and percentage) of residues with an average occupancy less than 0.9.

Mol	Chain	Analysed	<RSRZ>	#RSRZ>2	OWAB(Å <sup>2</sup> )	Q<0.9
1	A	227/252 (90%)	-0.02	15 (6%) 24 26	9, 28, 85, 113	4 (1%)
1	B	230/252 (91%)	-0.01	17 (7%) 20 22	8, 26, 79, 118	5 (2%)
All	All	457/504 (90%)	-0.02	32 (7%) 22 24	8, 27, 85, 118	9 (1%)

All (32) RSRZ outliers are listed below:

Mol	Chain	Res	Type	RSRZ
1	B	5	VAL	7.8
1	B	49	ILE	6.5
1	A	170	GLY	5.8
1	B	8	GLY	5.0
1	B	6	PRO	4.7
1	B	9	SER	4.1
1	B	174	ARG	4.1
1	A	236	PRO	4.0
1	A	49	ILE	3.8
1	B	7	ARG	3.5
1	B	48	SER	3.2
1	A	168	PRO	3.1
1	A	52	GLY	3.1
1	B	172	GLY	3.0
1	A	196	THR	3.0
1	A	173	SER	2.9
1	B	50	SER	2.9
1	A	9	SER	2.8
1	B	171	ASN	2.8
1	A	169	SER	2.7
1	B	170	GLY	2.5
1	B	51	GLN	2.5
1	A	195	HIS	2.5
1	A	166	SER	2.3

*Continued on next page...*

*Continued from previous page...*

Mol	Chain	Res	Type	RSRZ
1	B	10	HIS	2.2
1	A	51	GLN	2.2
1	B	46	ASN	2.2
1	B	168	PRO	2.1
1	A	188	TRP	2.1
1	B	47	THR	2.1
1	A	192	THR	2.1
1	A	84	ILE	2.1

## 6.2 Non-standard residues in protein, DNA, RNA chains [i](#)

There are no non-standard protein/DNA/RNA residues in this entry.

## 6.3 Carbohydrates [i](#)

There are no oligosaccharides in this entry.

## 6.4 Ligands [i](#)

In the following table, the Atoms column lists the number of modelled atoms in the group and the number defined in the chemical component dictionary. The B-factors column lists the minimum, median, 95<sup>th</sup> percentile and maximum values of B factors of atoms in the group. The column labelled 'Q< 0.9' lists the number of atoms with occupancy less than 0.9.

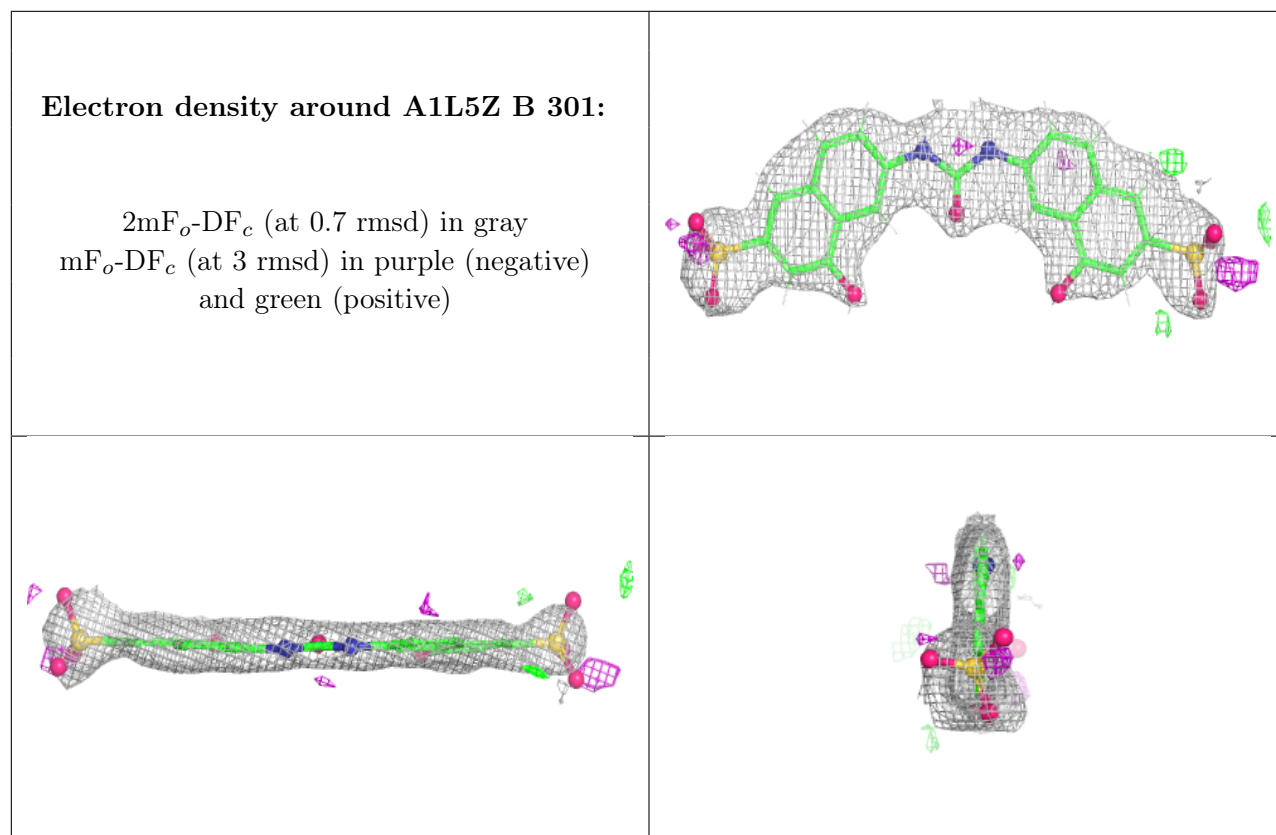
Mol	Type	Chain	Res	Atoms	RSCC	RSR	B-factors(Å <sup>2</sup> )	Q<0.9
3	GOL	B	307	6/6	0.77	0.21	63,82,115,116	0
4	SO4	A	303	5/5	0.80	0.14	62,71,106,122	0
4	SO4	B	304	5/5	0.81	0.14	66,83,99,117	0
3	GOL	A	305	6/6	0.81	0.16	44,63,87,90	0
3	GOL	B	306	6/6	0.83	0.18	39,68,98,114	0
5	NH4	B	309	1/1	0.83	0.17	48,57,57,57	0
3	GOL	B	302	6/6	0.85	0.14	24,33,62,74	0
5	NH4	B	310	1/1	0.85	0.15	52,63,63,63	0
2	A1L5Z	B	301	34/34	0.86	0.12	35,62,90,100	0
4	SO4	B	303	5/5	0.86	0.13	39,52,82,83	0
3	GOL	B	305	6/6	0.86	0.18	27,60,81,84	0
4	SO4	A	301	5/5	0.87	0.09	55,58,86,91	0
3	GOL	A	304	6/6	0.87	0.14	31,56,65,78	0
4	SO4	B	308	5/5	0.89	0.10	41,61,96,98	0
3	GOL	A	302	6/6	0.94	0.11	23,46,69,79	0

*Continued on next page...*

Continued from previous page...

Mol	Type	Chain	Res	Atoms	RSCC	RSR	B-factors( $\text{\AA}^2$ )	Q<0.9
5	NH4	A	307	1/1	0.95	0.11	34,41,41,41	0
4	SO4	A	306	5/5	0.96	0.12	23,27,44,45	0

The following is a graphical depiction of the model fit to experimental electron density of all instances of the Ligand of Interest. In addition, ligands with molecular weight > 250 and outliers as shown on the geometry validation Tables will also be included. Each fit is shown from different orientation to approximate a three-dimensional view.



## 6.5 Other polymers [\(i\)](#)

There are no such residues in this entry.