



# Full wwPDB EM Validation Report ⓘ

Mar 23, 2025 – 12:19 AM JST

PDB ID : 9JEF  
EMDB ID : EMD-61415  
Title : Cryo-EM structure of human TRPV3 in complex with linalool determined in MSP2N2 nanodisc  
Authors : Lu, X.; Yao, J.  
Deposited on : 2024-09-03  
Resolution : 3.62 Å(reported)

This is a Full wwPDB EM Validation Report for a publicly released PDB entry.

We welcome your comments at [validation@mail.wwpdb.org](mailto:validation@mail.wwpdb.org)

A user guide is available at

<https://www.wwpdb.org/validation/2017/EMValidationReportHelp>

with specific help available everywhere you see the ⓘ symbol.

The types of validation reports are described at

<http://www.wwpdb.org/validation/2017/FAQs#types>.

---

The following versions of software and data (see [references ⓘ](#)) were used in the production of this report:

EMDB validation analysis : 0.0.1.dev117  
Mogul : 1.8.5 (274361), CSD as541be (2020)  
MolProbity : 4.02b-467  
buster-report : 1.1.7 (2018)  
Percentile statistics : 20231227.v01 (using entries in the PDB archive December 27th 2023)  
MapQ : 1.9.13  
Ideal geometry (proteins) : Engh & Huber (2001)  
Ideal geometry (DNA, RNA) : Parkinson et al. (1996)  
Validation Pipeline (wwPDB-VP) : 2.41.2

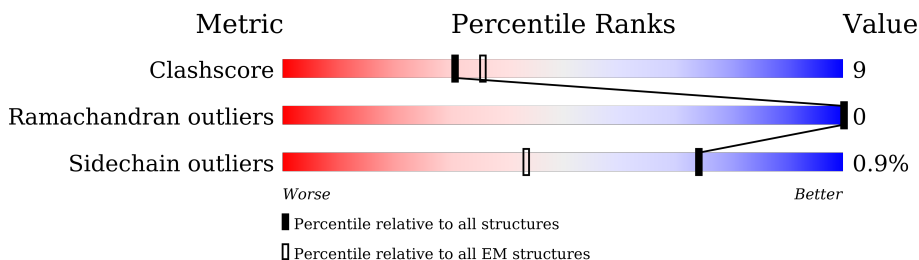
# 1 Overall quality at a glance i

The following experimental techniques were used to determine the structure:

*ELECTRON MICROSCOPY*

The reported resolution of this entry is 3.62 Å.

Percentile scores (ranging between 0-100) for global validation metrics of the entry are shown in the following graphic. The table shows the number of entries on which the scores are based.



Metric	Whole archive (#Entries)	EM structures (#Entries)
Clashscore	210492	15764
Ramachandran outliers	207382	16835
Sidechain outliers	206894	16415

The table below summarises the geometric issues observed across the polymeric chains and their fit to the map. The red, orange, yellow and green segments of the bar indicate the fraction of residues that contain outliers for  $\geq 3$ , 2, 1 and 0 types of geometric quality criteria respectively. A grey segment represents the fraction of residues that are not modelled. The numeric value for each fraction is indicated below the corresponding segment, with a dot representing fractions  $\leq 5\%$ . The upper red bar (where present) indicates the fraction of residues that have poor fit to the EM map (all-atom inclusion  $< 40\%$ ). The numeric value is given above the bar.

Mol	Chain	Length	Quality of chain
1	A	799	
1	B	799	
1	C	799	
1	D	799	

## 2 Entry composition [i](#)

There are 3 unique types of molecules in this entry. The entry contains 20380 atoms, of which 0 are hydrogens and 0 are deuteriums.

In the tables below, the AltConf column contains the number of residues with at least one atom in alternate conformation and the Trace column contains the number of residues modelled with at most 2 atoms.

- Molecule 1 is a protein called Transient receptor potential cation channel subfamily V member 3.

Mol	Chain	Residues	Atoms					AltConf	Trace
			Total	C	N	O	S		
1	A	601	4885	3183	804	867	31	0	0
1	B	601	4885	3183	804	867	31	0	0
1	C	601	4885	3183	804	867	31	0	0
1	D	601	4885	3183	804	867	31	0	0

There are 40 discrepancies between the modelled and reference sequences:

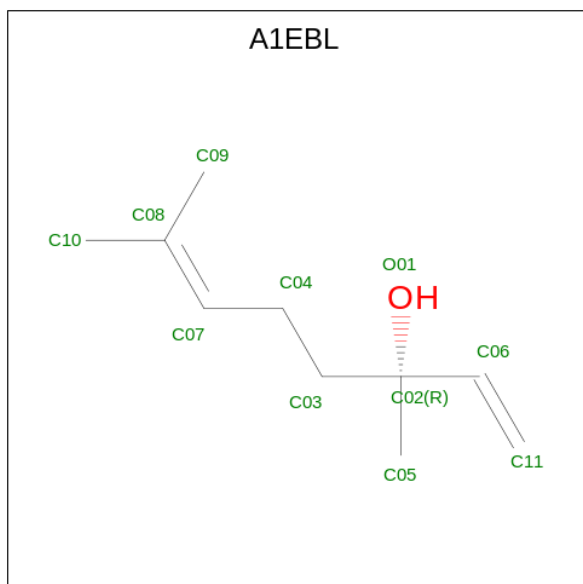
Chain	Residue	Modelled	Actual	Comment	Reference
A	25	VAL	ILE	variant	UNP Q8NET8
A	791	SER	-	expression tag	UNP Q8NET8
A	792	ASN	-	expression tag	UNP Q8NET8
A	793	SER	-	expression tag	UNP Q8NET8
A	794	LEU	-	expression tag	UNP Q8NET8
A	795	GLU	-	expression tag	UNP Q8NET8
A	796	VAL	-	expression tag	UNP Q8NET8
A	797	LEU	-	expression tag	UNP Q8NET8
A	798	PHE	-	expression tag	UNP Q8NET8
A	799	GLN	-	expression tag	UNP Q8NET8
B	25	VAL	ILE	variant	UNP Q8NET8
B	791	SER	-	expression tag	UNP Q8NET8
B	792	ASN	-	expression tag	UNP Q8NET8
B	793	SER	-	expression tag	UNP Q8NET8
B	794	LEU	-	expression tag	UNP Q8NET8
B	795	GLU	-	expression tag	UNP Q8NET8
B	796	VAL	-	expression tag	UNP Q8NET8
B	797	LEU	-	expression tag	UNP Q8NET8
B	798	PHE	-	expression tag	UNP Q8NET8
B	799	GLN	-	expression tag	UNP Q8NET8
C	25	VAL	ILE	variant	UNP Q8NET8

*Continued on next page...*

Continued from previous page...

Chain	Residue	Modelled	Actual	Comment	Reference
C	791	SER	-	expression tag	UNP Q8NET8
C	792	ASN	-	expression tag	UNP Q8NET8
C	793	SER	-	expression tag	UNP Q8NET8
C	794	LEU	-	expression tag	UNP Q8NET8
C	795	GLU	-	expression tag	UNP Q8NET8
C	796	VAL	-	expression tag	UNP Q8NET8
C	797	LEU	-	expression tag	UNP Q8NET8
C	798	PHE	-	expression tag	UNP Q8NET8
C	799	GLN	-	expression tag	UNP Q8NET8
D	25	VAL	ILE	variant	UNP Q8NET8
D	791	SER	-	expression tag	UNP Q8NET8
D	792	ASN	-	expression tag	UNP Q8NET8
D	793	SER	-	expression tag	UNP Q8NET8
D	794	LEU	-	expression tag	UNP Q8NET8
D	795	GLU	-	expression tag	UNP Q8NET8
D	796	VAL	-	expression tag	UNP Q8NET8
D	797	LEU	-	expression tag	UNP Q8NET8
D	798	PHE	-	expression tag	UNP Q8NET8
D	799	GLN	-	expression tag	UNP Q8NET8

- Molecule 2 is (3 {R})-3,7-dimethylocta-1,6-dien-3-ol (three-letter code: A1EBL) (formula: C<sub>10</sub>H<sub>18</sub>O) (labeled as "Ligand of Interest" by depositor).



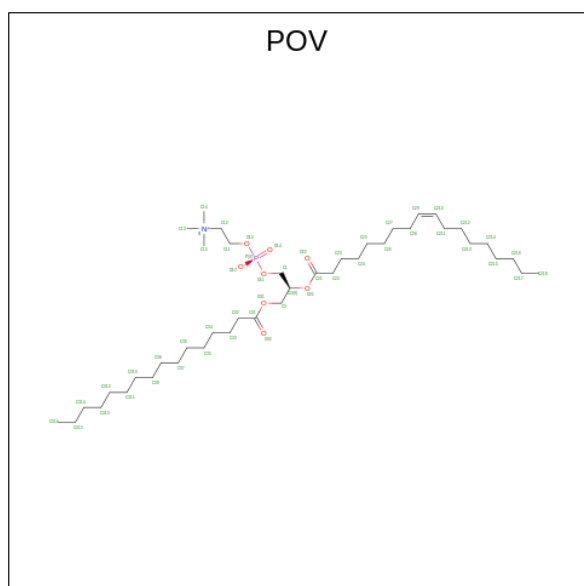
Mol	Chain	Residues	Atoms		AltConf	
2	A	1	Total	C	O	0
			11	10	1	

Continued on next page...

Continued from previous page...

Mol	Chain	Residues	Atoms			AltConf
			Total	C	O	
2	A	1	11	10	1	0
2	B	1	11	10	1	0
2	C	1	11	10	1	0

- Molecule 3 is (2S)-3-(hexadecanoyloxy)-2-[(9Z)-octadec-9-enoyloxy]propyl 2-(trimethylamm onio)ethyl phosphate (three-letter code: POV) (formula: C<sub>42</sub>H<sub>82</sub>NO<sub>8</sub>P).



Mol	Chain	Residues	Atoms					AltConf
			Total	C	N	O	P	
3	A	1	44	34	1	8	1	0
3	A	1	33	23	1	8	1	0
3	A	1	38	28	1	8	1	0
3	A	1	45	35	1	8	1	0
3	A	1	39	29	1	8	1	0
3	B	1	44	34	1	8	1	0
3	B	1	33	23	1	8	1	0
3	B	1	38	28	1	8	1	0

Continued on next page...

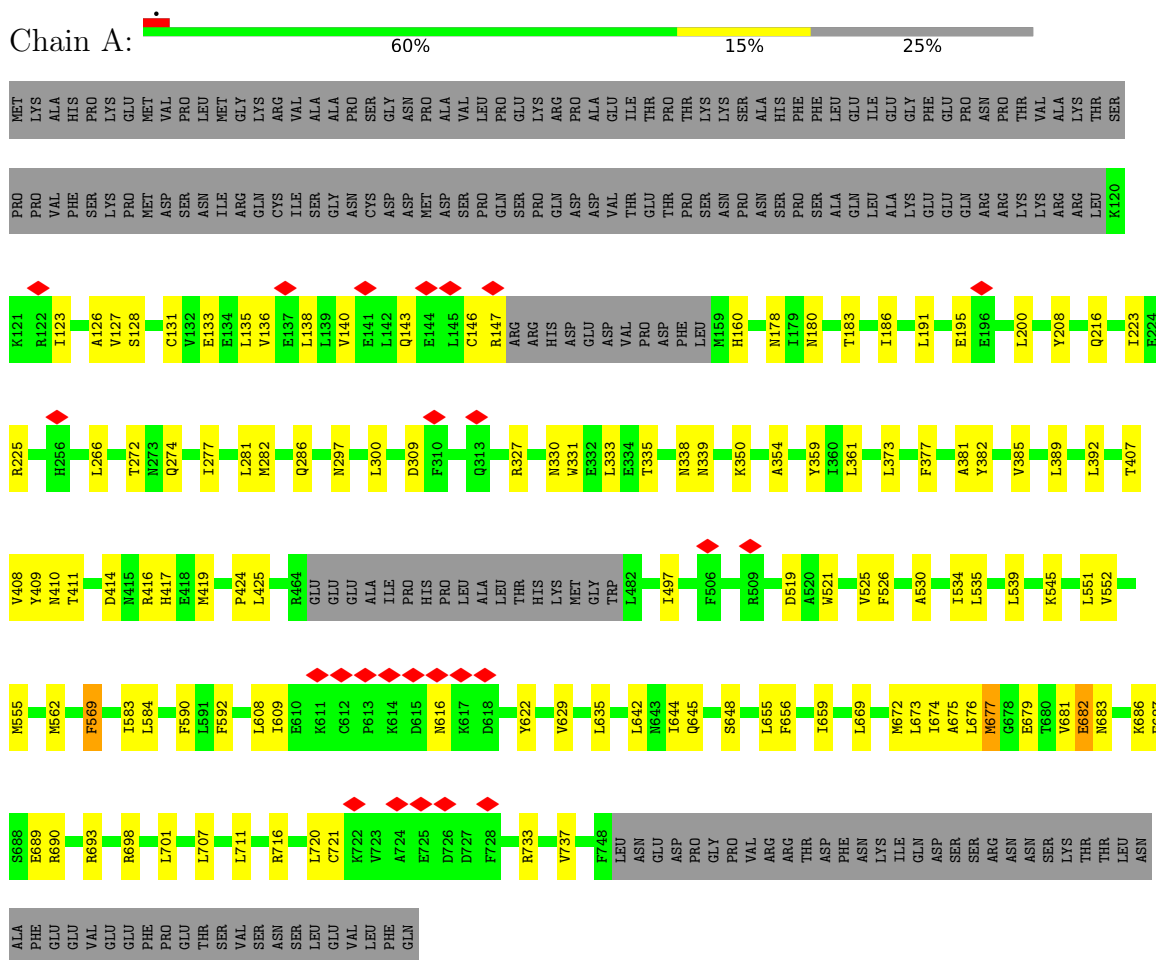
*Continued from previous page...*

Mol	Chain	Residues	Atoms					AltConf
3	B	1	Total	C	N	O	P	0
			45	35	1	8	1	
3	B	1	Total	C	N	O	P	0
			39	29	1	8	1	
3	C	1	Total	C	N	O	P	0
			44	34	1	8	1	
3	C	1	Total	C	N	O	P	0
			33	23	1	8	1	
3	C	1	Total	C	N	O	P	0
			38	28	1	8	1	
3	C	1	Total	C	N	O	P	0
			45	35	1	8	1	
3	C	1	Total	C	N	O	P	0
			39	29	1	8	1	
3	C	1	Total	C	N	O	P	0
			44	34	1	8	1	
3	D	1	Total	C	N	O	P	0
			33	23	1	8	1	
3	D	1	Total	C	N	O	P	0
			38	28	1	8	1	
3	D	1	Total	C	N	O	P	0
			45	35	1	8	1	
3	D	1	Total	C	N	O	P	0
			39	29	1	8	1	

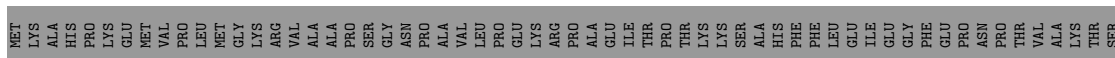
### 3 Residue-property plots

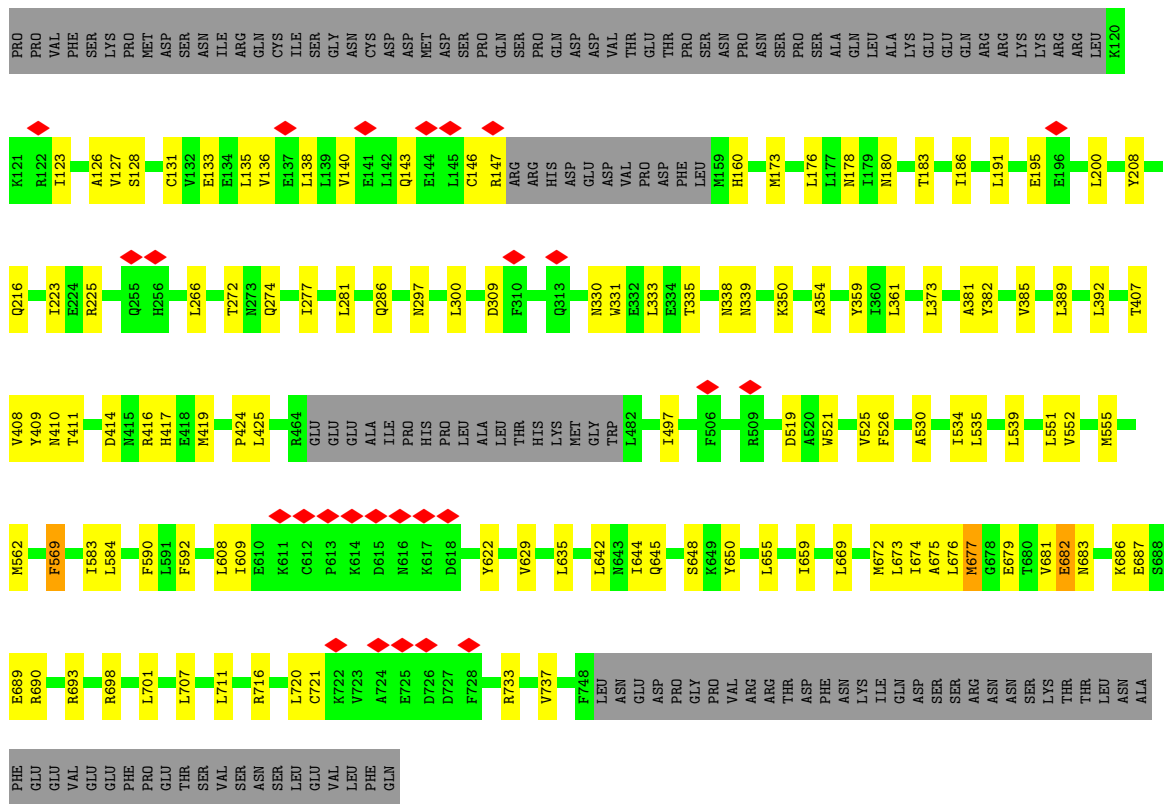
These plots are drawn for all protein, RNA, DNA and oligosaccharide chains in the entry. The first graphic for a chain summarises the proportions of the various outlier classes displayed in the second graphic. The second graphic shows the sequence view annotated by issues in geometry and atom inclusion in map density. Residues are color-coded according to the number of geometric quality criteria for which they contain at least one outlier: green = 0, yellow = 1, orange = 2 and red = 3 or more. A red diamond above a residue indicates a poor fit to the EM map for this residue (all-atom inclusion < 40%). Stretches of 2 or more consecutive residues without any outlier are shown as a green connector. Residues present in the sample, but not in the model, are shown in grey.

- Molecule 1: Transient receptor potential cation channel subfamily V member 3

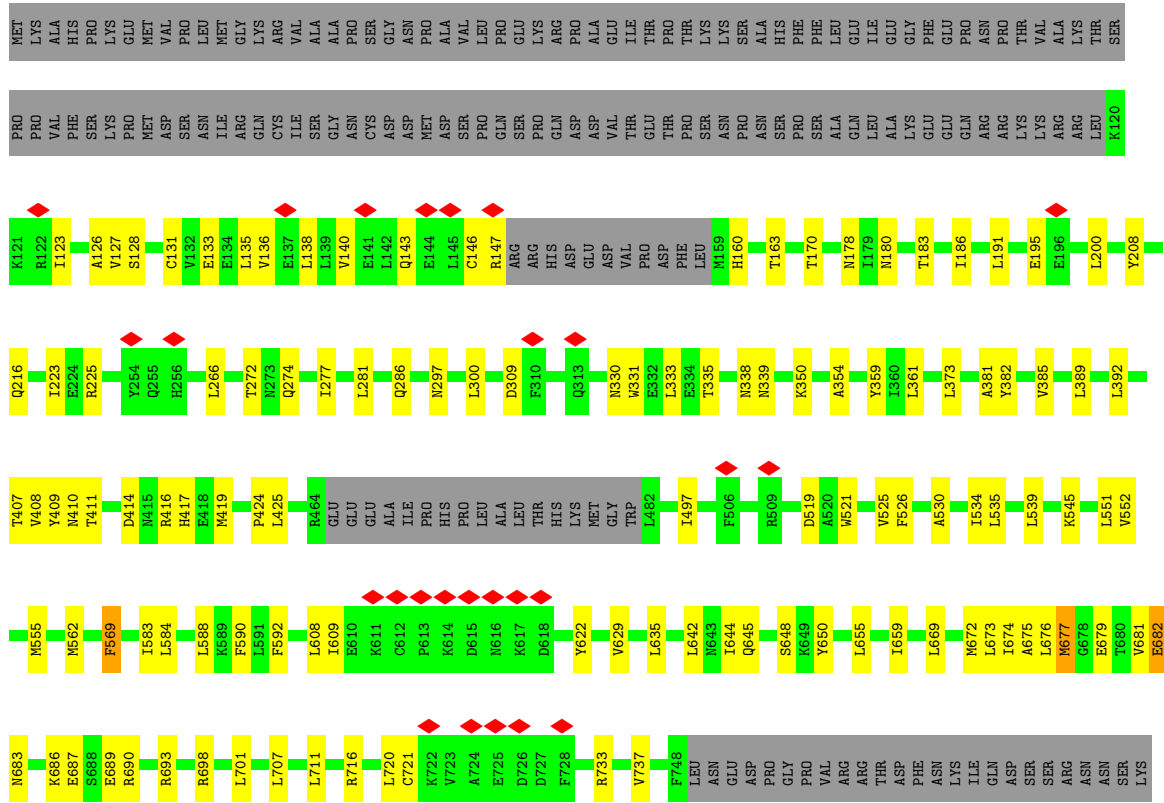


- Molecule 1: Transient receptor potential cation channel subfamily V member 3





● Molecule 1: Transient receptor potential cation channel subfamily V member 3







## 4 Experimental information

Property	Value	Source
EM reconstruction method	SINGLE PARTICLE	Depositor
Imposed symmetry	POINT, Not provided	
Number of particles used	169275	Depositor
Resolution determination method	FSC 0.143 CUT-OFF	Depositor
CTF correction method	PHASE FLIPPING AND AMPLITUDE CORRECTION	Depositor
Microscope	TFS KRIOS	Depositor
Voltage (kV)	300	Depositor
Electron dose ( $e^-/\text{\AA}^2$ )	50	Depositor
Minimum defocus (nm)	-1400	Depositor
Maximum defocus (nm)	-2400	Depositor
Magnification	Not provided	
Image detector	GATAN K3 (6k x 4k)	Depositor
Maximum map value	2.340	Depositor
Minimum map value	-1.341	Depositor
Average map value	-0.000	Depositor
Map value standard deviation	0.037	Depositor
Recommended contour level	0.16	Depositor
Map size ( $\text{\AA}$ )	342.40002, 342.40002, 342.40002	wwPDB
Map dimensions	320, 320, 320	wwPDB
Map angles ( $^\circ$ )	90.0, 90.0, 90.0	wwPDB
Pixel spacing ( $\text{\AA}$ )	1.07, 1.07, 1.07	Depositor

## 5 Model quality [i](#)

### 5.1 Standard geometry [i](#)

Bond lengths and bond angles in the following residue types are not validated in this section: A1EBL, POV

The Z score for a bond length (or angle) is the number of standard deviations the observed value is removed from the expected value. A bond length (or angle) with  $|Z| > 5$  is considered an outlier worth inspection. RMSZ is the root-mean-square of all Z scores of the bond lengths (or angles).

Mol	Chain	Bond lengths		Bond angles	
		RMSZ	# Z  >5	RMSZ	# Z  >5
1	A	0.25	0/4988	0.49	0/6742
1	B	0.25	0/4988	0.49	0/6742
1	C	0.25	0/4988	0.49	0/6742
1	D	0.26	0/4988	0.49	0/6742
All	All	0.25	0/19952	0.49	0/26968

There are no bond length outliers.

There are no bond angle outliers.

There are no chirality outliers.

There are no planarity outliers.

### 5.2 Too-close contacts [i](#)

In the following table, the Non-H and H(model) columns list the number of non-hydrogen atoms and hydrogen atoms in the chain respectively. The H(added) column lists the number of hydrogen atoms added and optimized by MolProbity. The Clashes column lists the number of clashes within the asymmetric unit, whereas Symm-Clashes lists symmetry-related clashes.

Mol	Chain	Non-H	H(model)	H(added)	Clashes	Symm-Clashes
1	A	4885	0	4964	95	0
1	B	4885	0	4964	91	0
1	C	4885	0	4964	95	0
1	D	4885	0	4964	95	0
2	A	22	0	0	0	0
2	B	11	0	0	0	0
2	C	11	0	0	0	0
3	A	199	0	261	6	0
3	B	199	0	261	7	0

*Continued on next page...*

*Continued from previous page...*

Mol	Chain	Non-H	H(model)	H(added)	Clashes	Symm-Clashes
3	C	243	0	321	8	0
3	D	155	0	201	4	0
All	All	20380	0	20900	357	0

The all-atom clashscore is defined as the number of clashes found per 1000 atoms (including hydrogen atoms). The all-atom clashscore for this structure is 9.

All (357) close contacts within the same asymmetric unit are listed below, sorted by their clash magnitude.

Atom-1	Atom-2	Interatomic distance (Å)	Clash overlap (Å)
1:B:551:LEU:HD23	1:B:555:MET:CE	1.89	1.03
1:A:551:LEU:HD23	1:A:555:MET:CE	1.89	1.03
1:D:551:LEU:HD23	1:D:555:MET:CE	1.89	1.02
1:C:551:LEU:HD23	1:C:555:MET:CE	1.89	1.02
1:D:178:ASN:OD1	1:D:178:ASN:O	1.85	0.95
1:A:178:ASN:OD1	1:A:178:ASN:O	1.85	0.95
1:C:551:LEU:HD23	1:C:555:MET:HE1	1.46	0.95
1:B:178:ASN:OD1	1:B:178:ASN:O	1.85	0.94
1:C:178:ASN:OD1	1:C:178:ASN:O	1.85	0.94
1:A:551:LEU:HD23	1:A:555:MET:HE2	1.47	0.93
1:D:551:LEU:HD23	1:D:555:MET:HE2	1.47	0.92
1:B:146:CYS:SG	1:B:160:HIS:HE1	1.94	0.91
1:C:146:CYS:SG	1:C:160:HIS:HE1	1.94	0.91
1:A:146:CYS:SG	1:A:160:HIS:HE1	1.94	0.91
1:D:146:CYS:SG	1:D:160:HIS:HE1	1.94	0.91
1:B:551:LEU:HD23	1:B:555:MET:HE1	1.50	0.90
1:B:551:LEU:CD2	1:B:555:MET:HE1	2.11	0.80
1:A:551:LEU:CD2	1:A:555:MET:HE2	2.11	0.80
1:D:551:LEU:CD2	1:D:555:MET:HE2	2.11	0.80
1:A:146:CYS:SG	1:A:160:HIS:CE1	2.76	0.79
1:A:675:ALA:HB1	1:B:681:VAL:HG21	1.65	0.79
1:C:551:LEU:CD2	1:C:555:MET:HE1	2.11	0.79
1:D:146:CYS:SG	1:D:160:HIS:CE1	2.76	0.79
1:C:146:CYS:SG	1:C:160:HIS:CE1	2.76	0.78
1:B:146:CYS:SG	1:B:160:HIS:CE1	2.76	0.78
1:C:675:ALA:HB1	1:D:681:VAL:HG21	1.69	0.75
1:A:681:VAL:HG21	1:D:675:ALA:HB1	1.70	0.72
1:B:675:ALA:HB1	1:C:681:VAL:HG21	1.71	0.71
1:A:642:LEU:O	1:A:642:LEU:HD23	1.94	0.68
1:D:642:LEU:HD23	1:D:642:LEU:O	1.94	0.68
1:C:642:LEU:O	1:C:642:LEU:HD23	1.94	0.67

*Continued on next page...*

*Continued from previous page...*

Atom-1	Atom-2	Interatomic distance (Å)	Clash overlap (Å)
1:B:642:LEU:HD23	1:B:642:LEU:O	1.94	0.67
1:A:655:LEU:HD11	3:B:801:POV:H25A	1.77	0.66
1:B:191:LEU:HD22	1:B:200:LEU:HD11	1.78	0.65
1:B:519:ASP:OD2	1:B:698:ARG:HD2	1.97	0.65
1:A:191:LEU:HD22	1:A:200:LEU:HD11	1.78	0.65
1:D:551:LEU:CD2	1:D:555:MET:CE	2.71	0.65
1:C:519:ASP:OD2	1:C:698:ARG:HD2	1.97	0.65
1:D:519:ASP:OD2	1:D:698:ARG:HD2	1.97	0.65
1:C:191:LEU:HD22	1:C:200:LEU:HD11	1.78	0.65
1:D:191:LEU:HD22	1:D:200:LEU:HD11	1.78	0.65
1:A:519:ASP:OD2	1:A:698:ARG:HD2	1.97	0.64
1:A:411:THR:HG1	1:A:698:ARG:HH22	1.45	0.64
1:B:551:LEU:CD2	1:B:555:MET:CE	2.71	0.63
1:C:655:LEU:HD11	3:C:807:POV:H25A	1.81	0.63
3:A:802:POV:H25A	1:D:655:LEU:HD11	1.80	0.62
1:A:562:MET:HG2	3:A:804:POV:H210	1.82	0.62
1:B:562:MET:HG2	3:B:803:POV:H210	1.82	0.61
1:D:562:MET:HG2	3:D:802:POV:H210	1.82	0.61
1:A:551:LEU:CD2	1:A:555:MET:CE	2.71	0.61
1:A:608:LEU:HG	1:B:552:VAL:HG11	1.83	0.60
1:B:655:LEU:HD11	3:C:801:POV:H25A	1.82	0.60
1:A:180:ASN:O	1:A:183:THR:OG1	2.20	0.60
1:B:180:ASN:O	1:B:183:THR:OG1	2.20	0.60
1:B:687:GLU:OE2	1:B:690:ARG:NH1	2.35	0.60
1:C:562:MET:HG2	3:C:803:POV:H210	1.82	0.60
1:A:687:GLU:OE2	1:A:690:ARG:NH1	2.35	0.59
1:C:180:ASN:O	1:C:183:THR:OG1	2.20	0.59
1:D:180:ASN:O	1:D:183:THR:OG1	2.20	0.59
1:D:644:ILE:HG13	1:D:645:GLN:HG2	1.85	0.59
1:A:644:ILE:HG13	1:A:645:GLN:HG2	1.85	0.59
1:D:687:GLU:OE2	1:D:690:ARG:NH1	2.35	0.59
1:C:687:GLU:OE2	1:C:690:ARG:NH1	2.35	0.59
1:B:191:LEU:HD22	1:B:200:LEU:CD1	2.33	0.59
1:C:644:ILE:HG13	1:C:645:GLN:HG2	1.85	0.58
1:B:644:ILE:HG13	1:B:645:GLN:HG2	1.85	0.58
1:C:191:LEU:HD22	1:C:200:LEU:CD1	2.33	0.58
1:A:411:THR:OG1	1:A:698:ARG:NH2	2.35	0.57
1:A:682:GLU:O	1:A:686:LYS:NZ	2.38	0.57
1:D:682:GLU:O	1:D:686:LYS:NZ	2.38	0.57
1:A:191:LEU:HD22	1:A:200:LEU:CD1	2.33	0.57
1:B:551:LEU:HD23	1:B:555:MET:HE2	1.82	0.57

*Continued on next page...*

*Continued from previous page...*

Atom-1	Atom-2	Interatomic distance (Å)	Clash overlap (Å)
1:D:191:LEU:HD22	1:D:200:LEU:CD1	2.33	0.57
1:B:682:GLU:O	1:B:686:LYS:NZ	2.38	0.57
1:D:389:LEU:HD13	1:D:733:ARG:HE	1.70	0.56
1:D:689:GLU:OE2	1:D:693:ARG:NH2	2.39	0.56
1:C:389:LEU:HD13	1:C:733:ARG:HE	1.70	0.56
1:C:682:GLU:O	1:C:686:LYS:NZ	2.38	0.56
1:C:689:GLU:OE2	1:C:693:ARG:NH2	2.39	0.56
1:C:608:LEU:HG	1:D:552:VAL:HG11	1.87	0.56
1:B:389:LEU:HD13	1:B:733:ARG:HE	1.70	0.56
3:B:804:POV:H22A	3:B:804:POV:H33A	1.88	0.56
3:C:804:POV:H22A	3:C:804:POV:H33A	1.88	0.56
3:D:803:POV:H22A	3:D:803:POV:H33A	1.88	0.56
1:A:552:VAL:HG11	1:D:608:LEU:HG	1.87	0.56
1:A:389:LEU:HD13	1:A:733:ARG:HE	1.70	0.55
3:A:805:POV:H22A	3:A:805:POV:H33A	1.88	0.55
1:C:551:LEU:CD2	1:C:555:MET:CE	2.71	0.55
1:D:330:ASN:OD1	1:D:330:ASN:N	2.39	0.55
1:A:689:GLU:OE2	1:A:693:ARG:NH2	2.39	0.55
1:B:286:GLN:OE1	1:B:286:GLN:N	2.36	0.55
1:B:608:LEU:HG	1:C:552:VAL:HG11	1.87	0.55
1:C:127:VAL:HG12	1:C:186:ILE:HD11	1.88	0.55
1:A:674:ILE:HA	1:A:677:MET:SD	2.47	0.55
1:B:689:GLU:OE2	1:B:693:ARG:NH2	2.39	0.55
1:D:592:PHE:HB2	3:D:804:POV:H36A	1.89	0.55
1:B:551:LEU:O	1:B:555:MET:HE2	2.07	0.55
1:B:330:ASN:OD1	1:B:330:ASN:N	2.39	0.54
1:D:389:LEU:CD1	1:D:733:ARG:HE	2.20	0.54
1:B:674:ILE:HA	1:B:677:MET:SD	2.47	0.54
1:C:411:THR:OG1	1:C:698:ARG:NH2	2.35	0.54
1:C:592:PHE:HB2	3:C:805:POV:H36A	1.89	0.54
1:C:674:ILE:HA	1:C:677:MET:SD	2.47	0.54
1:A:389:LEU:CD1	1:A:733:ARG:HE	2.20	0.54
1:D:127:VAL:HG12	1:D:186:ILE:HD11	1.88	0.54
1:D:411:THR:OG1	1:D:698:ARG:NH2	2.35	0.54
1:C:389:LEU:CD1	1:C:733:ARG:HE	2.20	0.54
1:D:674:ILE:HA	1:D:677:MET:SD	2.47	0.54
1:B:389:LEU:CD1	1:B:733:ARG:HE	2.20	0.54
1:A:592:PHE:HB2	3:A:806:POV:H36A	1.89	0.54
1:B:127:VAL:HG12	1:B:186:ILE:HD11	1.88	0.54
1:B:592:PHE:HB2	3:B:805:POV:H36A	1.89	0.54
1:A:331:TRP:O	1:A:335:THR:OG1	2.22	0.53

*Continued on next page...*

*Continued from previous page...*

Atom-1	Atom-2	Interatomic distance (Å)	Clash overlap (Å)
1:D:223:ILE:O	1:D:274:GLN:NE2	2.35	0.53
1:A:127:VAL:HG12	1:A:186:ILE:HD11	1.88	0.53
1:B:411:THR:OG1	1:B:698:ARG:NH2	2.35	0.53
1:C:331:TRP:O	1:C:335:THR:OG1	2.22	0.53
1:C:223:ILE:O	1:C:274:GLN:NE2	2.35	0.52
1:A:223:ILE:O	1:A:274:GLN:NE2	2.35	0.51
1:B:331:TRP:O	1:B:335:THR:OG1	2.22	0.51
1:B:300:LEU:HD11	1:B:333:LEU:HG	1.92	0.51
1:B:679:GLU:O	1:B:683:ASN:ND2	2.44	0.51
1:A:679:GLU:O	1:A:683:ASN:ND2	2.44	0.51
1:A:300:LEU:HD11	1:A:333:LEU:HG	1.92	0.51
1:D:551:LEU:O	1:D:555:MET:HE3	2.11	0.51
1:C:354:ALA:HA	1:C:419:MET:HE2	1.93	0.51
1:D:679:GLU:O	1:D:683:ASN:ND2	2.44	0.51
1:B:223:ILE:O	1:B:274:GLN:NE2	2.35	0.51
1:C:679:GLU:O	1:C:683:ASN:ND2	2.44	0.51
1:C:274:GLN:HE21	1:C:277:ILE:HD13	1.77	0.50
1:C:286:GLN:OE1	1:C:286:GLN:N	2.36	0.50
1:D:146:CYS:SG	1:D:147:ARG:NH2	2.84	0.50
1:D:300:LEU:HD11	1:D:333:LEU:HG	1.92	0.50
1:D:707:LEU:HD22	1:D:711:LEU:HD23	1.93	0.50
1:C:146:CYS:SG	1:C:147:ARG:NH2	2.84	0.50
1:D:361:LEU:HB3	1:D:424:PRO:HG2	1.93	0.50
1:A:146:CYS:SG	1:A:147:ARG:NH2	2.84	0.50
1:B:707:LEU:HD22	1:B:711:LEU:HD23	1.93	0.50
1:A:361:LEU:HB3	1:A:424:PRO:HG2	1.93	0.50
1:A:551:LEU:O	1:A:555:MET:HE3	2.10	0.50
1:D:274:GLN:HE21	1:D:277:ILE:HD13	1.76	0.50
1:A:274:GLN:HE21	1:A:277:ILE:HD13	1.76	0.50
1:B:146:CYS:SG	1:B:147:ARG:NH2	2.84	0.50
1:B:361:LEU:HB3	1:B:424:PRO:HG2	1.93	0.50
1:C:707:LEU:HD22	1:C:711:LEU:HD23	1.93	0.49
1:A:414:ASP:HA	1:A:690:ARG:HH21	1.77	0.49
1:B:195:GLU:HB3	1:B:200:LEU:HD22	1.94	0.49
1:C:300:LEU:HD11	1:C:333:LEU:HG	1.92	0.49
1:C:361:LEU:HB3	1:C:424:PRO:HG2	1.93	0.49
1:D:195:GLU:HB3	1:D:200:LEU:HD22	1.94	0.49
1:D:331:TRP:O	1:D:335:THR:OG1	2.22	0.49
1:B:414:ASP:HA	1:B:690:ARG:HH21	1.77	0.49
1:A:707:LEU:HD22	1:A:711:LEU:HD23	1.93	0.49
1:B:225:ARG:NH2	1:C:381:ALA:O	2.43	0.49

*Continued on next page...*

*Continued from previous page...*

Atom-1	Atom-2	Interatomic distance (Å)	Clash overlap (Å)
1:A:195:GLU:HB3	1:A:200:LEU:HD22	1.94	0.49
1:B:274:GLN:HE21	1:B:277:ILE:HD13	1.76	0.49
1:C:551:LEU:O	1:C:555:MET:HE2	2.13	0.49
1:C:414:ASP:HA	1:C:690:ARG:HH21	1.78	0.49
1:C:330:ASN:OD1	1:C:330:ASN:N	2.39	0.49
1:D:286:GLN:OE1	1:D:286:GLN:N	2.36	0.49
1:C:195:GLU:HB3	1:C:200:LEU:HD22	1.94	0.48
1:D:414:ASP:HA	1:D:690:ARG:HH21	1.77	0.48
1:A:551:LEU:HD23	1:A:555:MET:HE3	1.87	0.48
1:B:338:ASN:OD1	1:B:339:ASN:N	2.47	0.48
1:A:272:THR:OG1	1:A:274:GLN:OE1	2.26	0.48
1:B:679:GLU:O	1:B:682:GLU:HG3	2.14	0.48
1:C:408:VAL:HG11	1:C:701:LEU:HG	1.96	0.48
1:C:679:GLU:O	1:C:682:GLU:HG3	2.14	0.48
1:C:551:LEU:HD23	1:C:555:MET:HE2	1.89	0.48
1:A:338:ASN:OD1	1:A:339:ASN:N	2.47	0.48
1:A:408:VAL:HG11	1:A:701:LEU:HG	1.96	0.48
1:C:272:THR:OG1	1:C:274:GLN:OE1	2.27	0.48
1:D:354:ALA:HA	1:D:419:MET:HE2	1.95	0.48
1:B:272:THR:OG1	1:B:274:GLN:OE1	2.27	0.48
1:C:569:PHE:HE2	3:C:803:POV:H27	1.79	0.48
1:D:408:VAL:HG11	1:D:701:LEU:HG	1.96	0.48
1:D:551:LEU:HD23	1:D:555:MET:HE3	1.87	0.48
1:A:569:PHE:HE2	3:A:804:POV:H27	1.79	0.47
1:A:286:GLN:OE1	1:A:286:GLN:N	2.36	0.47
1:B:408:VAL:HG11	1:B:701:LEU:HG	1.96	0.47
1:C:126:ALA:HA	1:C:131:CYS:HB2	1.97	0.47
1:C:338:ASN:OD1	1:C:339:ASN:N	2.47	0.47
1:D:338:ASN:OD1	1:D:339:ASN:N	2.47	0.47
1:D:569:PHE:HE2	3:D:802:POV:H27	1.79	0.47
1:D:126:ALA:HA	1:D:131:CYS:HB2	1.97	0.47
1:D:679:GLU:O	1:D:682:GLU:HG3	2.14	0.47
1:B:126:ALA:HA	1:B:131:CYS:HB2	1.97	0.47
1:B:569:PHE:HE2	3:B:803:POV:H27	1.79	0.47
1:A:350:LYS:O	1:A:416:ARG:NH2	2.48	0.47
1:D:350:LYS:O	1:D:416:ARG:NH2	2.48	0.47
1:A:126:ALA:HA	1:A:131:CYS:HB2	1.97	0.47
1:A:679:GLU:O	1:A:682:GLU:HG3	2.14	0.47
1:D:297:ASN:OD1	1:D:338:ASN:ND2	2.49	0.46
1:B:297:ASN:OD1	1:B:338:ASN:ND2	2.49	0.46
1:B:354:ALA:HA	1:B:419:MET:HE2	1.96	0.46

*Continued on next page...*



*Continued from previous page...*

Atom-1	Atom-2	Interatomic distance (Å)	Clash overlap (Å)
1:D:720:LEU:O	1:D:721:CYS:HB3	2.15	0.46
1:A:297:ASN:OD1	1:A:338:ASN:ND2	2.49	0.46
1:C:350:LYS:O	1:C:416:ARG:NH2	2.48	0.46
1:B:350:LYS:O	1:B:416:ARG:NH2	2.48	0.46
1:B:407:THR:HA	1:B:416:ARG:NH1	2.31	0.46
1:B:720:LEU:O	1:B:721:CYS:HB3	2.15	0.46
1:C:297:ASN:OD1	1:C:338:ASN:ND2	2.49	0.46
1:D:272:THR:OG1	1:D:274:GLN:OE1	2.26	0.46
1:D:407:THR:HA	1:D:416:ARG:NH1	2.31	0.46
1:C:407:THR:HA	1:C:416:ARG:NH1	2.31	0.45
1:C:720:LEU:O	1:C:721:CYS:HB3	2.15	0.45
1:C:225:ARG:NH2	1:D:381:ALA:O	2.41	0.45
1:A:616:ASN:OD1	1:A:616:ASN:N	2.45	0.45
1:C:609:ILE:HD12	1:C:622:TYR:HB2	1.99	0.45
1:C:675:ALA:HB2	1:D:677:MET:CE	2.47	0.45
1:D:609:ILE:HD12	1:D:622:TYR:HB2	1.99	0.45
1:A:677:MET:CE	1:D:675:ALA:HB2	2.47	0.45
1:B:133:GLU:HA	1:B:136:VAL:HG22	1.99	0.45
1:B:409:TYR:HE1	1:B:698:ARG:HG3	1.82	0.45
1:A:354:ALA:HA	1:A:419:MET:HE2	1.98	0.45
1:A:720:LEU:O	1:A:721:CYS:HB3	2.15	0.45
1:C:672:MET:HG2	1:C:676:LEU:HD23	1.99	0.45
1:A:133:GLU:HA	1:A:136:VAL:HG22	1.99	0.45
1:A:609:ILE:HD12	1:A:622:TYR:HB2	1.99	0.45
1:C:385:VAL:HG12	1:C:737:VAL:HG12	1.99	0.45
1:D:409:TYR:HE1	1:D:698:ARG:HG3	1.82	0.45
1:A:672:MET:HG2	1:A:676:LEU:HD23	1.99	0.45
1:B:392:LEU:HD12	1:B:716:ARG:HG3	1.99	0.45
1:C:409:TYR:HE1	1:C:698:ARG:HG3	1.82	0.45
1:D:133:GLU:HA	1:D:136:VAL:HG22	1.99	0.45
1:A:407:THR:HA	1:A:416:ARG:NH1	2.31	0.45
3:C:807:POV:H26	1:D:629:VAL:HG12	1.99	0.45
1:D:672:MET:HG2	1:D:676:LEU:HD23	1.99	0.45
1:C:133:GLU:HA	1:C:136:VAL:HG22	1.99	0.44
1:C:407:THR:HG21	1:C:425:LEU:HD13	1.99	0.44
1:A:675:ALA:HB2	1:B:677:MET:CE	2.47	0.44
1:B:609:ILE:HD12	1:B:622:TYR:HB2	1.99	0.44
1:C:123:ILE:HG13	1:C:138:LEU:HD13	2.00	0.44
1:C:216:GLN:NE2	1:D:382:TYR:OH	2.50	0.44
1:B:672:MET:HG2	1:B:676:LEU:HD23	1.99	0.44
1:B:675:ALA:HB2	1:C:677:MET:CE	2.48	0.44

*Continued on next page...*

*Continued from previous page...*

Atom-1	Atom-2	Interatomic distance (Å)	Clash overlap (Å)
1:D:407:THR:HG21	1:D:425:LEU:HD13	1.99	0.44
1:A:629:VAL:HG12	3:A:802:POV:H26	1.99	0.44
1:B:407:THR:HG21	1:B:425:LEU:HD13	1.99	0.44
1:D:673:LEU:O	1:D:677:MET:HG3	2.18	0.44
1:A:381:ALA:O	1:D:225:ARG:NH2	2.42	0.44
1:B:385:VAL:HG12	1:B:737:VAL:HG12	1.99	0.44
1:D:392:LEU:HD12	1:D:716:ARG:HG3	1.99	0.44
1:A:407:THR:HG21	1:A:425:LEU:HD13	1.99	0.44
1:A:409:TYR:HE1	1:A:698:ARG:HG3	1.82	0.44
1:B:216:GLN:NE2	1:C:382:TYR:OH	2.50	0.44
1:D:590:PHE:HD1	1:D:669:LEU:HD12	1.83	0.44
1:A:590:PHE:HD1	1:A:669:LEU:HD12	1.83	0.44
1:C:673:LEU:O	1:C:677:MET:HG3	2.18	0.44
1:A:382:TYR:OH	1:D:216:GLN:NE2	2.51	0.43
1:A:385:VAL:HG12	1:A:737:VAL:HG12	1.99	0.43
1:A:673:LEU:O	1:A:677:MET:HG3	2.18	0.43
1:B:583:ILE:HG23	1:B:584:LEU:HG	1.99	0.43
1:B:673:LEU:O	1:B:677:MET:HG3	2.18	0.43
1:D:385:VAL:HG12	1:D:737:VAL:HG12	1.99	0.43
1:A:635:LEU:HD13	1:A:642:LEU:HD12	2.00	0.43
1:B:629:VAL:HG12	3:B:801:POV:H26	1.99	0.43
1:C:411:THR:HG1	1:C:698:ARG:HH22	1.59	0.43
1:C:629:VAL:HG12	3:C:801:POV:H26	1.99	0.43
1:A:392:LEU:HD12	1:A:716:ARG:HG3	1.99	0.43
1:A:583:ILE:HG23	1:A:584:LEU:HG	2.00	0.43
1:C:392:LEU:HD12	1:C:716:ARG:HG3	1.99	0.43
1:D:123:ILE:HG13	1:D:138:LEU:HD13	2.00	0.43
1:B:590:PHE:HD1	1:B:669:LEU:HD12	1.83	0.43
1:C:590:PHE:HD1	1:C:669:LEU:HD12	1.83	0.43
1:D:583:ILE:HG23	1:D:584:LEU:HG	2.00	0.43
1:A:123:ILE:HG13	1:A:138:LEU:HD13	2.00	0.43
1:A:225:ARG:NH2	1:B:381:ALA:O	2.46	0.43
1:A:330:ASN:OD1	1:A:330:ASN:N	2.39	0.43
1:B:635:LEU:HD13	1:B:642:LEU:HD12	2.01	0.43
1:C:497:ILE:HD11	1:C:526:PHE:HD2	1.84	0.43
1:B:223:ILE:HG23	1:B:277:ILE:HG21	2.01	0.43
1:C:583:ILE:HG23	1:C:584:LEU:HG	1.99	0.43
1:B:389:LEU:HD12	1:B:389:LEU:HA	1.91	0.43
1:C:650:TYR:OH	1:D:545:LYS:O	2.36	0.43
1:A:309:ASP:OD1	1:A:309:ASP:N	2.52	0.43
1:B:266:LEU:HD13	1:B:281:LEU:HB3	2.01	0.43

*Continued on next page...*

*Continued from previous page...*

Atom-1	Atom-2	Interatomic distance (Å)	Clash overlap (Å)
1:A:377:PHE:O	1:A:389:LEU:N	2.45	0.43
1:C:223:ILE:HG23	1:C:277:ILE:HG21	2.01	0.43
1:D:530:ALA:O	1:D:534:ILE:HG12	2.19	0.43
1:A:521:TRP:O	1:A:525:VAL:HG23	2.19	0.42
1:A:530:ALA:O	1:A:534:ILE:HG12	2.19	0.42
1:B:123:ILE:HG13	1:B:138:LEU:HD13	2.00	0.42
1:B:530:ALA:O	1:B:534:ILE:HG12	2.19	0.42
1:D:282:MET:HE3	1:D:327:ARG:HE	1.84	0.42
1:A:223:ILE:HG23	1:A:277:ILE:HG21	2.01	0.42
1:C:530:ALA:O	1:C:534:ILE:HG12	2.19	0.42
1:A:282:MET:HE3	1:A:327:ARG:HE	1.83	0.42
1:A:410:ASN:HB2	1:A:416:ARG:NH1	2.34	0.42
1:D:330:ASN:HA	1:D:373:LEU:HD11	2.01	0.42
1:A:330:ASN:HA	1:A:373:LEU:HD11	2.01	0.42
1:B:655:LEU:O	1:B:659:ILE:HG12	2.19	0.42
1:C:266:LEU:HD13	1:C:281:LEU:HB3	2.01	0.42
1:D:135:LEU:HD13	1:D:186:ILE:HG13	2.01	0.42
1:D:410:ASN:HB2	1:D:416:ARG:NH1	2.35	0.42
1:D:521:TRP:O	1:D:525:VAL:HG23	2.19	0.42
1:A:135:LEU:HD13	1:A:186:ILE:HG13	2.01	0.42
1:C:521:TRP:O	1:C:525:VAL:HG23	2.19	0.42
1:D:655:LEU:O	1:D:659:ILE:HG12	2.20	0.42
1:B:497:ILE:HD11	1:B:526:PHE:HD2	1.84	0.42
1:C:609:ILE:HG12	1:C:648:SER:HB3	2.02	0.42
1:D:266:LEU:HD13	1:D:281:LEU:HB3	2.01	0.42
1:B:300:LEU:HD12	1:B:300:LEU:H	1.85	0.42
1:B:410:ASN:HB2	1:B:416:ARG:NH1	2.34	0.42
1:C:635:LEU:HD13	1:C:642:LEU:HD12	2.01	0.42
1:C:655:LEU:O	1:C:659:ILE:HG12	2.19	0.42
1:A:497:ILE:HD11	1:A:526:PHE:HD2	1.84	0.42
1:D:497:ILE:HD11	1:D:526:PHE:HD2	1.84	0.42
1:A:655:LEU:O	1:A:659:ILE:HG12	2.20	0.42
1:C:300:LEU:HD12	1:C:300:LEU:H	1.85	0.42
1:D:223:ILE:HG23	1:D:277:ILE:HG21	2.01	0.42
1:D:309:ASP:N	1:D:309:ASP:OD1	2.52	0.41
1:D:635:LEU:HD13	1:D:642:LEU:HD12	2.00	0.41
1:A:300:LEU:H	1:A:300:LEU:HD12	1.85	0.41
1:A:656:PHE:HD1	3:B:801:POV:H37A	1.84	0.41
1:B:135:LEU:HD13	1:B:186:ILE:HG13	2.01	0.41
1:B:330:ASN:HA	1:B:373:LEU:HD11	2.01	0.41
1:B:521:TRP:O	1:B:525:VAL:HG23	2.19	0.41

*Continued on next page...*

*Continued from previous page...*

Atom-1	Atom-2	Interatomic distance (Å)	Clash overlap (Å)
1:C:135:LEU:HD13	1:C:186:ILE:HG13	2.01	0.41
1:C:410:ASN:HB2	1:C:416:ARG:NH1	2.35	0.41
1:A:545:LYS:O	1:D:650:TYR:OH	2.38	0.41
1:B:650:TYR:OH	1:C:545:LYS:O	2.37	0.41
1:C:417:HIS:CE1	1:C:693:ARG:HB3	2.55	0.41
1:D:417:HIS:CE1	1:D:693:ARG:HB3	2.55	0.41
1:A:140:VAL:HA	1:A:143:GLN:HE22	1.85	0.41
1:A:266:LEU:HD13	1:A:281:LEU:HB3	2.01	0.41
1:B:173:MET:O	1:B:176:LEU:N	2.50	0.41
1:C:677:MET:HG3	1:C:677:MET:H	1.67	0.41
1:D:173:MET:O	1:D:176:LEU:N	2.50	0.41
1:D:609:ILE:HG12	1:D:648:SER:HB3	2.02	0.41
1:B:417:HIS:CE1	1:B:693:ARG:HB3	2.55	0.41
1:C:128:SER:O	1:C:178:ASN:ND2	2.53	0.41
1:C:588:LEU:HD23	1:C:588:LEU:HA	1.94	0.41
1:D:128:SER:O	1:D:178:ASN:ND2	2.53	0.41
1:A:417:HIS:CE1	1:A:693:ARG:HB3	2.55	0.41
1:A:609:ILE:HG12	1:A:648:SER:HB3	2.02	0.41
1:B:128:SER:O	1:B:178:ASN:ND2	2.53	0.41
1:C:330:ASN:HA	1:C:373:LEU:HD11	2.01	0.41
1:A:216:GLN:NE2	1:B:382:TYR:OH	2.53	0.41
1:B:140:VAL:HA	1:B:143:GLN:HE22	1.85	0.41
1:C:389:LEU:HD12	1:C:389:LEU:HA	1.91	0.41
1:A:143:GLN:OE1	1:A:143:GLN:N	2.53	0.41
1:A:535:LEU:O	1:A:539:LEU:HG	2.21	0.41
1:B:309:ASP:N	1:B:309:ASP:OD1	2.52	0.41
1:C:309:ASP:OD1	1:C:309:ASP:N	2.52	0.41
1:D:588:LEU:HD23	1:D:588:LEU:HA	1.94	0.41
1:D:677:MET:HG3	1:D:677:MET:H	1.68	0.41
1:B:535:LEU:O	1:B:539:LEU:HG	2.21	0.41
1:C:140:VAL:HA	1:C:143:GLN:HE22	1.85	0.41
1:A:128:SER:O	1:A:178:ASN:ND2	2.53	0.40
1:B:609:ILE:HG12	1:B:648:SER:HB3	2.02	0.40
1:C:163:THR:HG22	1:C:170:THR:HG23	2.03	0.40
1:C:535:LEU:O	1:C:539:LEU:HG	2.21	0.40
1:D:300:LEU:HD12	1:D:300:LEU:H	1.85	0.40
1:D:389:LEU:HD12	1:D:389:LEU:HA	1.91	0.40
1:D:535:LEU:O	1:D:539:LEU:HG	2.21	0.40
1:D:377:PHE:O	1:D:389:LEU:N	2.45	0.40

There are no symmetry-related clashes.

## 5.3 Torsion angles [i](#)

### 5.3.1 Protein backbone [i](#)

In the following table, the Percentiles column shows the percent Ramachandran outliers of the chain as a percentile score with respect to all PDB entries followed by that with respect to all EM entries.

The Analysed column shows the number of residues for which the backbone conformation was analysed, and the total number of residues.

Mol	Chain	Analysed	Favoured	Allowed	Outliers	Percentiles	
1	A	595/799 (74%)	557 (94%)	38 (6%)	0	100	100
1	B	595/799 (74%)	557 (94%)	38 (6%)	0	100	100
1	C	595/799 (74%)	557 (94%)	38 (6%)	0	100	100
1	D	595/799 (74%)	557 (94%)	38 (6%)	0	100	100
All	All	2380/3196 (74%)	2228 (94%)	152 (6%)	0	100	100

There are no Ramachandran outliers to report.

### 5.3.2 Protein sidechains [i](#)

In the following table, the Percentiles column shows the percent sidechain outliers of the chain as a percentile score with respect to all PDB entries followed by that with respect to all EM entries.

The Analysed column shows the number of residues for which the sidechain conformation was analysed, and the total number of residues.

Mol	Chain	Analysed	Rotameric	Outliers	Percentiles	
1	A	532/712 (75%)	527 (99%)	5 (1%)	75	86
1	B	532/712 (75%)	527 (99%)	5 (1%)	75	86
1	C	532/712 (75%)	527 (99%)	5 (1%)	75	86
1	D	532/712 (75%)	527 (99%)	5 (1%)	75	86
All	All	2128/2848 (75%)	2108 (99%)	20 (1%)	74	86

All (20) residues with a non-rotameric sidechain are listed below:

Mol	Chain	Res	Type
1	A	208	TYR
1	A	359	TYR

*Continued on next page...*

*Continued from previous page...*

<b>Mol</b>	<b>Chain</b>	<b>Res</b>	<b>Type</b>
1	A	569	PHE
1	A	677	MET
1	A	682	GLU
1	B	208	TYR
1	B	359	TYR
1	B	569	PHE
1	B	677	MET
1	B	682	GLU
1	C	208	TYR
1	C	359	TYR
1	C	569	PHE
1	C	677	MET
1	C	682	GLU
1	D	208	TYR
1	D	359	TYR
1	D	569	PHE
1	D	677	MET
1	D	682	GLU

Sometimes sidechains can be flipped to improve hydrogen bonding and reduce clashes. All (16) such sidechains are listed below:

<b>Mol</b>	<b>Chain</b>	<b>Res</b>	<b>Type</b>
1	A	160	HIS
1	A	178	ASN
1	A	216	GLN
1	A	417	HIS
1	B	160	HIS
1	B	178	ASN
1	B	216	GLN
1	B	417	HIS
1	C	160	HIS
1	C	178	ASN
1	C	216	GLN
1	C	417	HIS
1	D	160	HIS
1	D	178	ASN
1	D	216	GLN
1	D	417	HIS

### 5.3.3 RNA [i](#)

There are no RNA molecules in this entry.

## 5.4 Non-standard residues in protein, DNA, RNA chains [i](#)

There are no non-standard protein/DNA/RNA residues in this entry.

## 5.5 Carbohydrates [i](#)

There are no oligosaccharides in this entry.

## 5.6 Ligand geometry [i](#)

24 ligands are modelled in this entry.

In the following table, the Counts columns list the number of bonds (or angles) for which Mogul statistics could be retrieved, the number of bonds (or angles) that are observed in the model and the number of bonds (or angles) that are defined in the Chemical Component Dictionary. The Link column lists molecule types, if any, to which the group is linked. The Z score for a bond length (or angle) is the number of standard deviations the observed value is removed from the expected value. A bond length (or angle) with  $|Z| > 2$  is considered an outlier worth inspection. RMSZ is the root-mean-square of all Z scores of the bond lengths (or angles).

Mol	Type	Chain	Res	Link	Bond lengths			Bond angles		
					Counts	RMSZ	# Z  > 2	Counts	RMSZ	# Z  > 2
3	POV	D	802	-	37,37,51	0.58	0	42,45,59	0.50	0
3	POV	C	801	-	43,43,51	0.54	0	49,51,59	0.48	0
3	POV	A	806	-	38,38,51	0.57	0	44,46,59	0.50	0
2	A1EBL	B	806	-	10,10,10	1.15	1 (10%)	12,13,13	1.55	3 (25%)
3	POV	A	805	-	44,44,51	0.53	0	50,52,59	0.48	0
3	POV	B	805	-	38,38,51	0.57	0	44,46,59	0.50	0
3	POV	C	803	-	37,37,51	0.58	0	42,45,59	0.49	0
3	POV	B	803	-	37,37,51	0.58	0	42,45,59	0.50	0
2	A1EBL	A	807	-	10,10,10	1.15	1 (10%)	12,13,13	1.55	3 (25%)
2	A1EBL	C	806	-	10,10,10	1.15	1 (10%)	12,13,13	1.56	3 (25%)
3	POV	A	803	-	32,32,51	0.61	0	38,40,59	0.53	0
3	POV	C	802	-	32,32,51	0.61	0	38,40,59	0.53	0
3	POV	C	804	-	44,44,51	0.53	0	50,52,59	0.48	0
3	POV	D	804	-	38,38,51	0.57	0	44,46,59	0.50	0
3	POV	A	802	-	43,43,51	0.54	0	49,51,59	0.48	0
3	POV	B	801	-	43,43,51	0.54	0	49,51,59	0.48	0
3	POV	C	807	-	43,43,51	0.54	0	49,51,59	0.48	0

Mol	Type	Chain	Res	Link	Bond lengths			Bond angles		
					Counts	RMSZ	# Z  > 2	Counts	RMSZ	# Z  > 2
3	POV	A	804	-	37,37,51	0.58	0	42,45,59	0.50	0
2	A1EBL	A	801	-	10,10,10	1.15	1 (10%)	12,13,13	1.56	3 (25%)
3	POV	D	801	-	32,32,51	0.61	0	38,40,59	0.53	0
3	POV	C	805	-	38,38,51	0.57	0	44,46,59	0.50	0
3	POV	B	804	-	44,44,51	0.53	0	50,52,59	0.48	0
3	POV	B	802	-	32,32,51	0.62	0	38,40,59	0.53	0
3	POV	D	803	-	44,44,51	0.53	0	50,52,59	0.48	0

In the following table, the Chirals column lists the number of chiral outliers, the number of chiral centers analysed, the number of these observed in the model and the number defined in the Chemical Component Dictionary. Similar counts are reported in the Torsion and Rings columns. '-' means no outliers of that kind were identified.

Mol	Type	Chain	Res	Link	Chirals	Torsions	Rings
3	POV	D	802	-	-	11/41/41/55	-
3	POV	C	801	-	-	16/47/47/55	-
3	POV	A	806	-	-	16/42/42/55	-
2	A1EBL	B	806	-	-	6/10/10/10	-
3	POV	A	805	-	-	11/48/48/55	-
3	POV	B	805	-	-	16/42/42/55	-
3	POV	C	803	-	-	11/41/41/55	-
3	POV	B	803	-	-	11/41/41/55	-
2	A1EBL	A	807	-	-	6/10/10/10	-
2	A1EBL	C	806	-	-	6/10/10/10	-
3	POV	A	803	-	-	9/36/36/55	-
3	POV	C	802	-	-	9/36/36/55	-
3	POV	C	804	-	-	11/48/48/55	-
3	POV	D	804	-	-	16/42/42/55	-
3	POV	A	802	-	-	16/47/47/55	-
3	POV	B	801	-	-	16/47/47/55	-
3	POV	C	807	-	-	16/47/47/55	-
3	POV	A	804	-	-	11/41/41/55	-
2	A1EBL	A	801	-	-	6/10/10/10	-
3	POV	D	801	-	-	9/36/36/55	-
3	POV	C	805	-	-	16/42/42/55	-
3	POV	B	804	-	-	11/48/48/55	-
3	POV	B	802	-	-	9/36/36/55	-

Continued on next page...



*Continued from previous page...*

Mol	Type	Chain	Res	Link	Chirals	Torsions	Rings
3	POV	D	803	-	-	11/48/48/55	-

All (4) bond length outliers are listed below:

Mol	Chain	Res	Type	Atoms	Z	Observed(Å)	Ideal(Å)
2	A	801	A1EBL	O01-C02	-2.38	1.41	1.44
2	A	807	A1EBL	O01-C02	-2.38	1.41	1.44
2	B	806	A1EBL	O01-C02	-2.38	1.41	1.44
2	C	806	A1EBL	O01-C02	-2.38	1.41	1.44

All (12) bond angle outliers are listed below:

Mol	Chain	Res	Type	Atoms	Z	Observed(°)	Ideal(°)
2	A	801	A1EBL	C02-C06-C11	-3.26	111.62	128.97
2	A	807	A1EBL	C02-C06-C11	-3.25	111.65	128.97
2	B	806	A1EBL	C02-C06-C11	-3.25	111.65	128.97
2	C	806	A1EBL	C02-C06-C11	-3.25	111.67	128.97
2	A	807	A1EBL	C09-C08-C10	2.58	120.30	114.60
2	A	801	A1EBL	C09-C08-C10	2.56	120.26	114.60
2	B	806	A1EBL	C09-C08-C10	2.56	120.26	114.60
2	C	806	A1EBL	C09-C08-C10	2.55	120.25	114.60
2	C	806	A1EBL	C04-C07-C08	-2.36	119.68	127.75
2	A	801	A1EBL	C04-C07-C08	-2.35	119.72	127.75
2	A	807	A1EBL	C04-C07-C08	-2.34	119.76	127.75
2	B	806	A1EBL	C04-C07-C08	-2.33	119.78	127.75

There are no chirality outliers.

All (276) torsion outliers are listed below:

Mol	Chain	Res	Type	Atoms
2	A	801	A1EBL	C05-C02-C03-C04
2	A	801	A1EBL	C06-C02-C03-C04
2	A	801	A1EBL	O01-C02-C03-C04
2	A	807	A1EBL	C05-C02-C03-C04
2	A	807	A1EBL	C06-C02-C03-C04
2	A	807	A1EBL	O01-C02-C03-C04
2	B	806	A1EBL	C05-C02-C03-C04
2	B	806	A1EBL	C06-C02-C03-C04
2	B	806	A1EBL	O01-C02-C03-C04
2	C	806	A1EBL	C05-C02-C03-C04
2	C	806	A1EBL	C06-C02-C03-C04

*Continued on next page...*

*Continued from previous page...*

Mol	Chain	Res	Type	Atoms
2	C	806	A1EBL	O01-C02-C03-C04
3	A	802	POV	C1-O11-P-O12
3	A	802	POV	C1-O11-P-O13
3	A	802	POV	C1-O11-P-O14
3	A	802	POV	C2-C1-O11-P
3	A	803	POV	C11-O12-P-O14
3	A	803	POV	O12-C11-C12-N
3	A	804	POV	O21-C2-C3-O31
3	A	805	POV	C12-C11-O12-P
3	A	806	POV	C1-O11-P-O13
3	A	806	POV	C1-O11-P-O14
3	B	801	POV	C1-O11-P-O12
3	B	801	POV	C1-O11-P-O13
3	B	801	POV	C1-O11-P-O14
3	B	801	POV	C2-C1-O11-P
3	B	802	POV	C11-O12-P-O14
3	B	802	POV	O12-C11-C12-N
3	B	803	POV	O21-C2-C3-O31
3	B	804	POV	C12-C11-O12-P
3	B	805	POV	C1-O11-P-O13
3	B	805	POV	C1-O11-P-O14
3	C	801	POV	C1-O11-P-O12
3	C	801	POV	C1-O11-P-O13
3	C	801	POV	C1-O11-P-O14
3	C	801	POV	C2-C1-O11-P
3	C	802	POV	C11-O12-P-O14
3	C	802	POV	O12-C11-C12-N
3	C	803	POV	O21-C2-C3-O31
3	C	804	POV	C12-C11-O12-P
3	C	805	POV	C1-O11-P-O13
3	C	805	POV	C1-O11-P-O14
3	C	807	POV	C1-O11-P-O12
3	C	807	POV	C1-O11-P-O13
3	C	807	POV	C1-O11-P-O14
3	C	807	POV	C2-C1-O11-P
3	D	801	POV	C11-O12-P-O14
3	D	801	POV	O12-C11-C12-N
3	D	802	POV	O21-C2-C3-O31
3	D	803	POV	C12-C11-O12-P
3	D	804	POV	C1-O11-P-O13
3	D	804	POV	C1-O11-P-O14
3	A	806	POV	C31-C32-C33-C34

*Continued on next page...*

*Continued from previous page...*

Mol	Chain	Res	Type	Atoms
3	B	805	POV	C31-C32-C33-C34
3	C	805	POV	C31-C32-C33-C34
3	D	804	POV	C31-C32-C33-C34
3	A	805	POV	C2-C1-O11-P
3	B	804	POV	C2-C1-O11-P
3	C	804	POV	C2-C1-O11-P
3	D	803	POV	C2-C1-O11-P
3	A	802	POV	C11-O12-P-O11
3	A	804	POV	C1-O11-P-O12
3	A	805	POV	C11-O12-P-O11
3	A	806	POV	C1-O11-P-O12
3	A	806	POV	C11-O12-P-O11
3	B	801	POV	C11-O12-P-O11
3	B	803	POV	C1-O11-P-O12
3	B	804	POV	C11-O12-P-O11
3	B	805	POV	C1-O11-P-O12
3	B	805	POV	C11-O12-P-O11
3	C	801	POV	C11-O12-P-O11
3	C	803	POV	C1-O11-P-O12
3	C	804	POV	C11-O12-P-O11
3	C	805	POV	C1-O11-P-O12
3	C	805	POV	C11-O12-P-O11
3	C	807	POV	C11-O12-P-O11
3	D	802	POV	C1-O11-P-O12
3	D	803	POV	C11-O12-P-O11
3	D	804	POV	C1-O11-P-O12
3	D	804	POV	C11-O12-P-O11
3	A	802	POV	C23-C24-C25-C26
3	B	801	POV	C23-C24-C25-C26
3	C	801	POV	C23-C24-C25-C26
3	C	807	POV	C23-C24-C25-C26
3	A	803	POV	C21-C22-C23-C24
3	B	802	POV	C21-C22-C23-C24
3	C	802	POV	C21-C22-C23-C24
3	D	801	POV	C21-C22-C23-C24
3	A	802	POV	C1-C2-C3-O31
3	A	803	POV	C1-C2-C3-O31
3	B	801	POV	C1-C2-C3-O31
3	B	802	POV	C1-C2-C3-O31
3	C	801	POV	C1-C2-C3-O31
3	C	802	POV	C1-C2-C3-O31
3	C	807	POV	C1-C2-C3-O31

*Continued on next page...*

*Continued from previous page...*

Mol	Chain	Res	Type	Atoms
3	D	801	POV	C1-C2-C3-O31
3	A	802	POV	C35-C36-C37-C38
3	B	801	POV	C35-C36-C37-C38
3	C	801	POV	C35-C36-C37-C38
3	C	807	POV	C35-C36-C37-C38
3	A	804	POV	C22-C21-O21-C2
3	B	803	POV	C22-C21-O21-C2
3	C	803	POV	C22-C21-O21-C2
3	D	802	POV	C22-C21-O21-C2
3	A	803	POV	O21-C2-C3-O31
3	A	805	POV	O21-C2-C3-O31
3	B	802	POV	O21-C2-C3-O31
3	B	804	POV	O21-C2-C3-O31
3	C	802	POV	O21-C2-C3-O31
3	C	804	POV	O21-C2-C3-O31
3	D	801	POV	O21-C2-C3-O31
3	D	803	POV	O21-C2-C3-O31
3	A	804	POV	O22-C21-O21-C2
3	B	803	POV	O22-C21-O21-C2
3	C	803	POV	O22-C21-O21-C2
3	D	802	POV	O22-C21-O21-C2
3	A	803	POV	O11-C1-C2-C3
3	A	806	POV	O11-C1-C2-C3
3	B	802	POV	O11-C1-C2-C3
3	B	805	POV	O11-C1-C2-C3
3	C	802	POV	O11-C1-C2-C3
3	C	805	POV	O11-C1-C2-C3
3	D	801	POV	O11-C1-C2-C3
3	D	804	POV	O11-C1-C2-C3
3	A	805	POV	C1-C2-C3-O31
3	B	804	POV	C1-C2-C3-O31
3	C	804	POV	C1-C2-C3-O31
3	D	803	POV	C1-C2-C3-O31
3	A	804	POV	O11-C1-C2-C3
3	B	803	POV	O11-C1-C2-C3
3	C	803	POV	O11-C1-C2-C3
3	D	802	POV	O11-C1-C2-C3
3	A	806	POV	C22-C21-O21-C2
3	B	805	POV	C22-C21-O21-C2
3	C	805	POV	C22-C21-O21-C2
3	D	804	POV	C22-C21-O21-C2
3	A	804	POV	C1-C2-C3-O31

*Continued on next page...*

*Continued from previous page...*

Mol	Chain	Res	Type	Atoms
3	B	803	POV	C1-C2-C3-O31
3	C	803	POV	C1-C2-C3-O31
3	D	802	POV	C1-C2-C3-O31
3	A	802	POV	O11-C1-C2-O21
3	A	806	POV	O11-C1-C2-O21
3	B	801	POV	O11-C1-C2-O21
3	B	805	POV	O11-C1-C2-O21
3	C	801	POV	O11-C1-C2-O21
3	C	805	POV	O11-C1-C2-O21
3	C	807	POV	O11-C1-C2-O21
3	D	804	POV	O11-C1-C2-O21
3	C	801	POV	C33-C34-C35-C36
3	C	807	POV	C33-C34-C35-C36
3	A	802	POV	C33-C34-C35-C36
3	B	801	POV	C33-C34-C35-C36
3	A	806	POV	O22-C21-O21-C2
3	B	805	POV	O22-C21-O21-C2
3	C	805	POV	O22-C21-O21-C2
3	D	804	POV	O22-C21-O21-C2
3	A	802	POV	C213-C214-C215-C216
3	B	801	POV	C213-C214-C215-C216
3	C	801	POV	C213-C214-C215-C216
3	C	807	POV	C213-C214-C215-C216
3	A	802	POV	O11-C1-C2-C3
3	B	801	POV	O11-C1-C2-C3
3	C	801	POV	O11-C1-C2-C3
3	C	807	POV	O11-C1-C2-C3
3	A	804	POV	O11-C1-C2-O21
3	B	803	POV	O11-C1-C2-O21
3	C	803	POV	O11-C1-C2-O21
3	D	802	POV	O11-C1-C2-O21
3	A	802	POV	O21-C2-C3-O31
3	B	801	POV	O21-C2-C3-O31
3	C	801	POV	O21-C2-C3-O31
3	C	807	POV	O21-C2-C3-O31
3	A	806	POV	C34-C35-C36-C37
3	B	805	POV	C34-C35-C36-C37
3	C	805	POV	C34-C35-C36-C37
3	D	804	POV	C34-C35-C36-C37
3	A	803	POV	C11-O12-P-O11
3	B	802	POV	C11-O12-P-O11
3	C	802	POV	C11-O12-P-O11

*Continued on next page...*

*Continued from previous page...*

Mol	Chain	Res	Type	Atoms
3	D	801	POV	C11-O12-P-O11
3	A	802	POV	C11-O12-P-O13
3	A	802	POV	C11-O12-P-O14
3	A	804	POV	C1-O11-P-O14
3	A	805	POV	C11-O12-P-O14
3	A	806	POV	C11-O12-P-O13
3	A	806	POV	C11-O12-P-O14
3	B	801	POV	C11-O12-P-O13
3	B	801	POV	C11-O12-P-O14
3	B	803	POV	C1-O11-P-O14
3	B	804	POV	C11-O12-P-O14
3	B	805	POV	C11-O12-P-O13
3	B	805	POV	C11-O12-P-O14
3	C	801	POV	C11-O12-P-O13
3	C	801	POV	C11-O12-P-O14
3	C	803	POV	C1-O11-P-O14
3	C	804	POV	C11-O12-P-O14
3	C	805	POV	C11-O12-P-O13
3	C	805	POV	C11-O12-P-O14
3	C	807	POV	C11-O12-P-O13
3	C	807	POV	C11-O12-P-O14
3	D	802	POV	C1-O11-P-O14
3	D	803	POV	C11-O12-P-O14
3	D	804	POV	C11-O12-P-O13
3	D	804	POV	C11-O12-P-O14
3	A	805	POV	C22-C23-C24-C25
3	B	804	POV	C22-C23-C24-C25
3	D	803	POV	C22-C23-C24-C25
3	C	804	POV	C22-C23-C24-C25
3	A	803	POV	O11-C1-C2-O21
3	B	802	POV	O11-C1-C2-O21
3	C	802	POV	O11-C1-C2-O21
3	D	801	POV	O11-C1-C2-O21
3	A	806	POV	C32-C31-O31-C3
3	B	805	POV	C32-C31-O31-C3
3	C	805	POV	C32-C31-O31-C3
3	D	804	POV	C32-C31-O31-C3
3	A	806	POV	O32-C31-O31-C3
3	B	805	POV	O32-C31-O31-C3
3	C	805	POV	O32-C31-O31-C3
3	D	804	POV	O32-C31-O31-C3
3	C	805	POV	C2-C1-O11-P

*Continued on next page...*

*Continued from previous page...*

Mol	Chain	Res	Type	Atoms
3	A	806	POV	C11-C12-N-C15
3	B	805	POV	C11-C12-N-C15
3	C	805	POV	C11-C12-N-C15
3	D	804	POV	C11-C12-N-C15
3	B	803	POV	C32-C33-C34-C35
3	C	803	POV	C32-C33-C34-C35
3	D	802	POV	C32-C33-C34-C35
3	A	806	POV	C2-C1-O11-P
3	B	805	POV	C2-C1-O11-P
3	D	804	POV	C2-C1-O11-P
3	A	804	POV	C32-C33-C34-C35
3	A	804	POV	C27-C28-C29-C210
3	B	803	POV	C27-C28-C29-C210
3	C	803	POV	C27-C28-C29-C210
3	D	802	POV	C27-C28-C29-C210
3	A	805	POV	C1-O11-P-O12
3	B	804	POV	C1-O11-P-O12
3	C	804	POV	C1-O11-P-O12
3	D	803	POV	C1-O11-P-O12
3	A	802	POV	C11-C12-N-C13
3	B	801	POV	C11-C12-N-C13
3	C	801	POV	C11-C12-N-C13
3	C	807	POV	C11-C12-N-C13
3	A	803	POV	C11-C12-N-C15
3	B	802	POV	C11-C12-N-C15
3	C	802	POV	C11-C12-N-C15
3	D	801	POV	C11-C12-N-C15
3	A	805	POV	C26-C27-C28-C29
3	B	804	POV	C26-C27-C28-C29
3	C	804	POV	C26-C27-C28-C29
3	D	803	POV	C26-C27-C28-C29
2	A	801	A1EBL	O01-C02-C06-C11
2	A	807	A1EBL	O01-C02-C06-C11
2	B	806	A1EBL	O01-C02-C06-C11
2	C	806	A1EBL	O01-C02-C06-C11
3	A	805	POV	C1-O11-P-O14
3	B	804	POV	C1-O11-P-O14
3	C	804	POV	C1-O11-P-O14
3	D	803	POV	C1-O11-P-O14
2	A	801	A1EBL	C05-C02-C06-C11
2	A	807	A1EBL	C05-C02-C06-C11
2	B	806	A1EBL	C05-C02-C06-C11

*Continued on next page...*

*Continued from previous page...*

Mol	Chain	Res	Type	Atoms
2	C	806	A1EBL	C05-C02-C06-C11
3	A	804	POV	C1-C2-O21-C21
3	B	803	POV	C1-C2-O21-C21
3	C	803	POV	C1-C2-O21-C21
3	D	802	POV	C1-C2-O21-C21
2	A	801	A1EBL	C03-C02-C06-C11
2	A	807	A1EBL	C03-C02-C06-C11
2	B	806	A1EBL	C03-C02-C06-C11
2	C	806	A1EBL	C03-C02-C06-C11
3	A	805	POV	O31-C31-C32-C33
3	B	804	POV	O31-C31-C32-C33
3	C	804	POV	O31-C31-C32-C33
3	D	803	POV	O31-C31-C32-C33

There are no ring outliers.

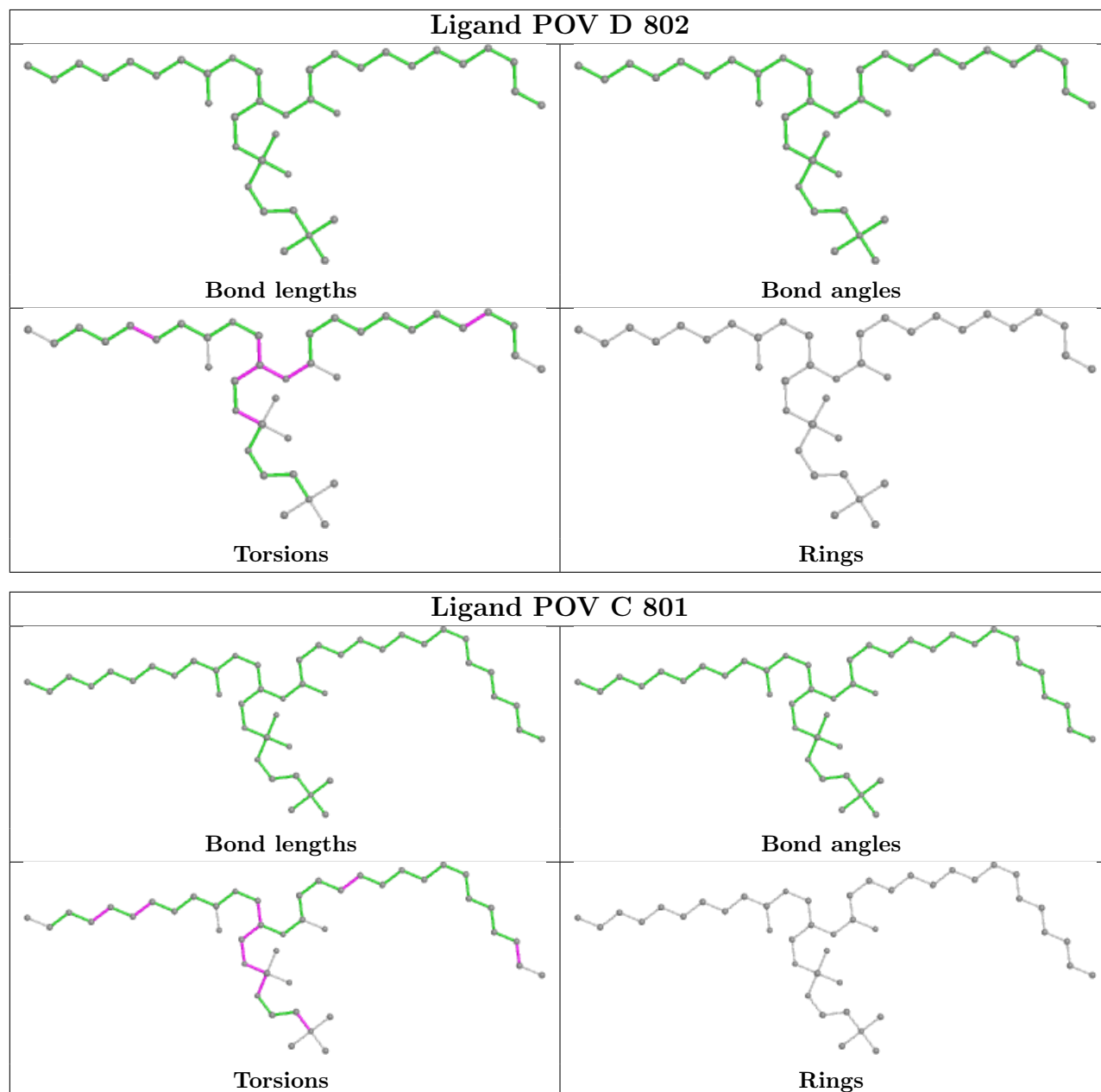
16 monomers are involved in 25 short contacts:

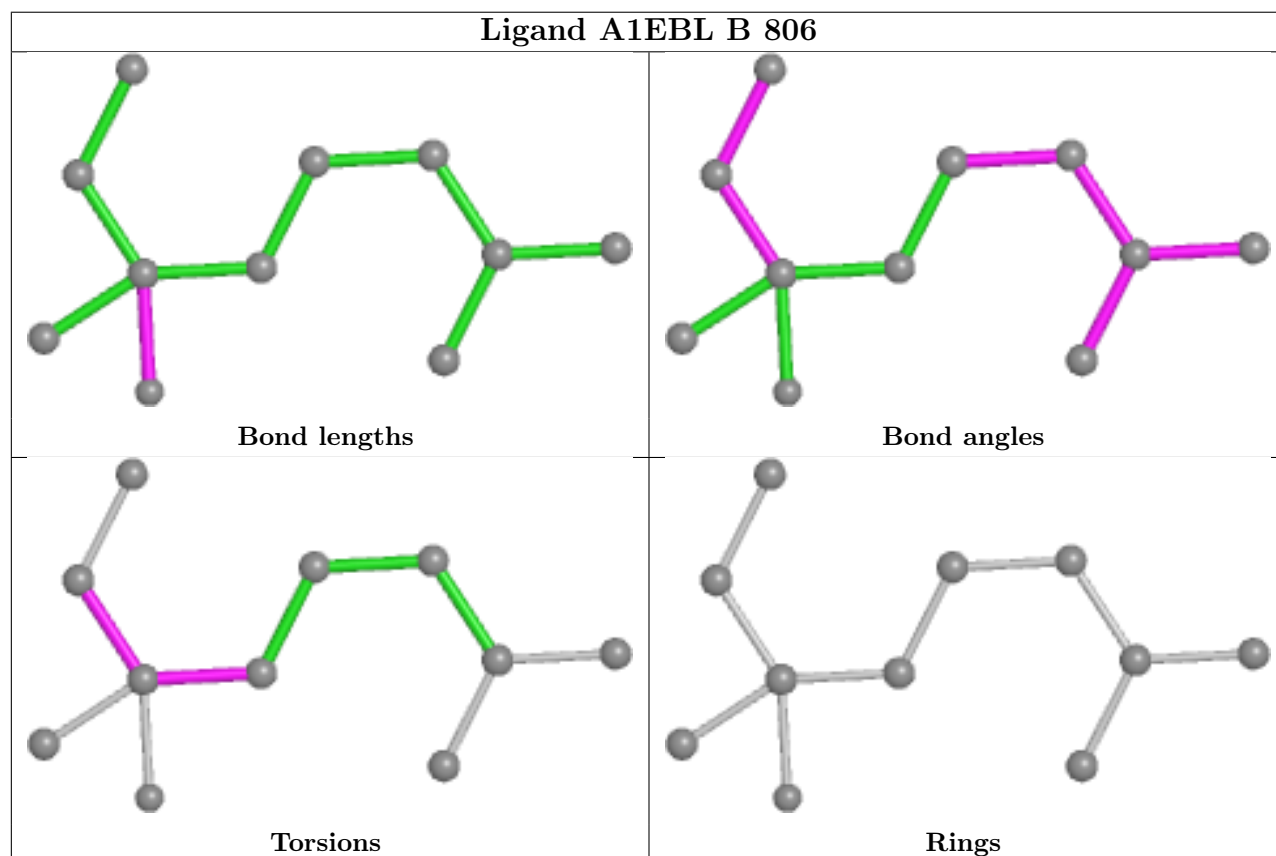
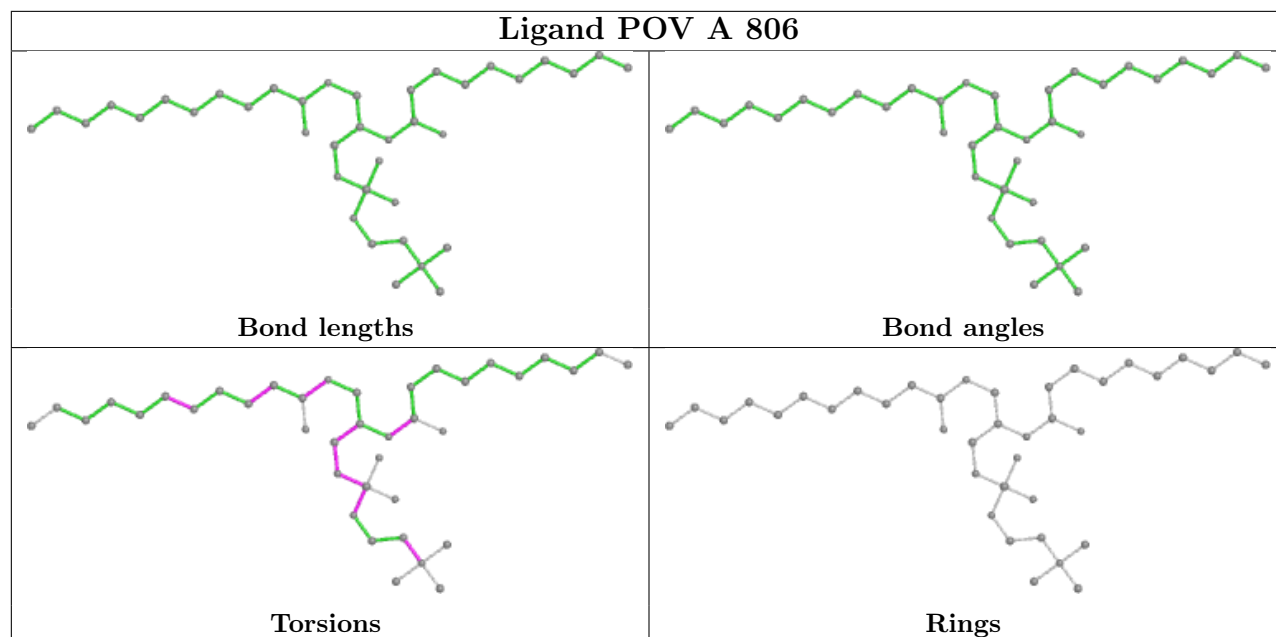
Mol	Chain	Res	Type	Clashes	Symm-Clashes
3	D	802	POV	2	0
3	C	801	POV	2	0
3	A	806	POV	1	0
3	A	805	POV	1	0
3	B	805	POV	1	0
3	C	803	POV	2	0
3	B	803	POV	2	0
3	C	804	POV	1	0
3	D	804	POV	1	0
3	A	802	POV	2	0
3	B	801	POV	3	0
3	C	807	POV	2	0
3	A	804	POV	2	0
3	C	805	POV	1	0
3	B	804	POV	1	0
3	D	803	POV	1	0

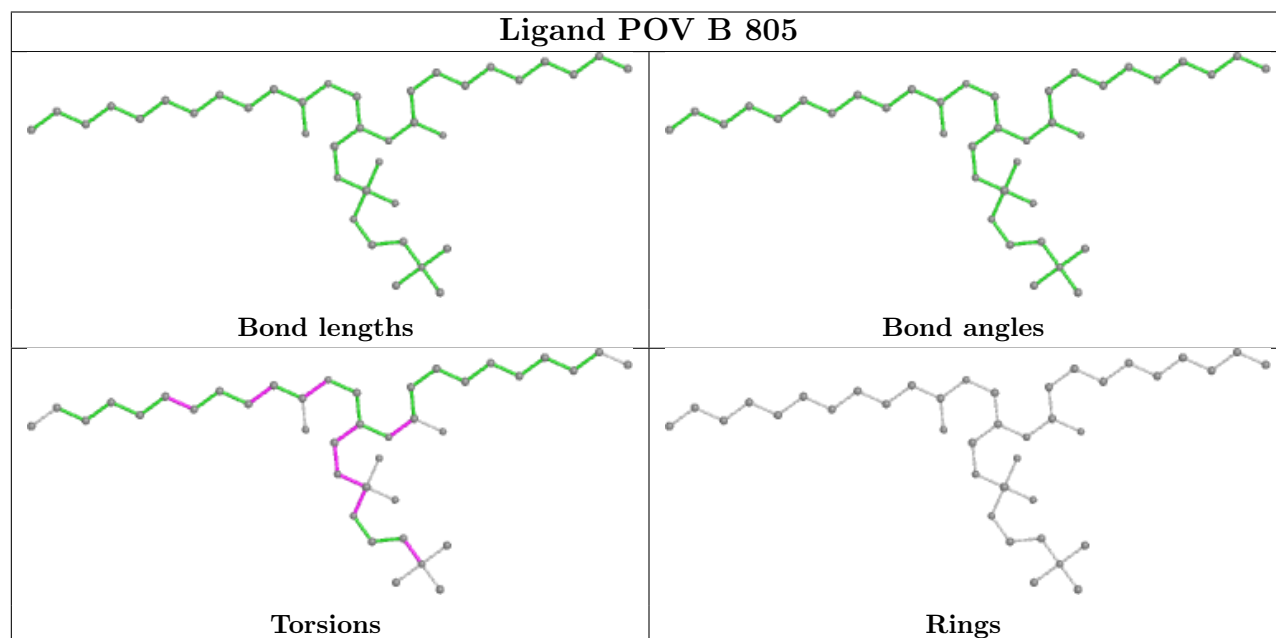
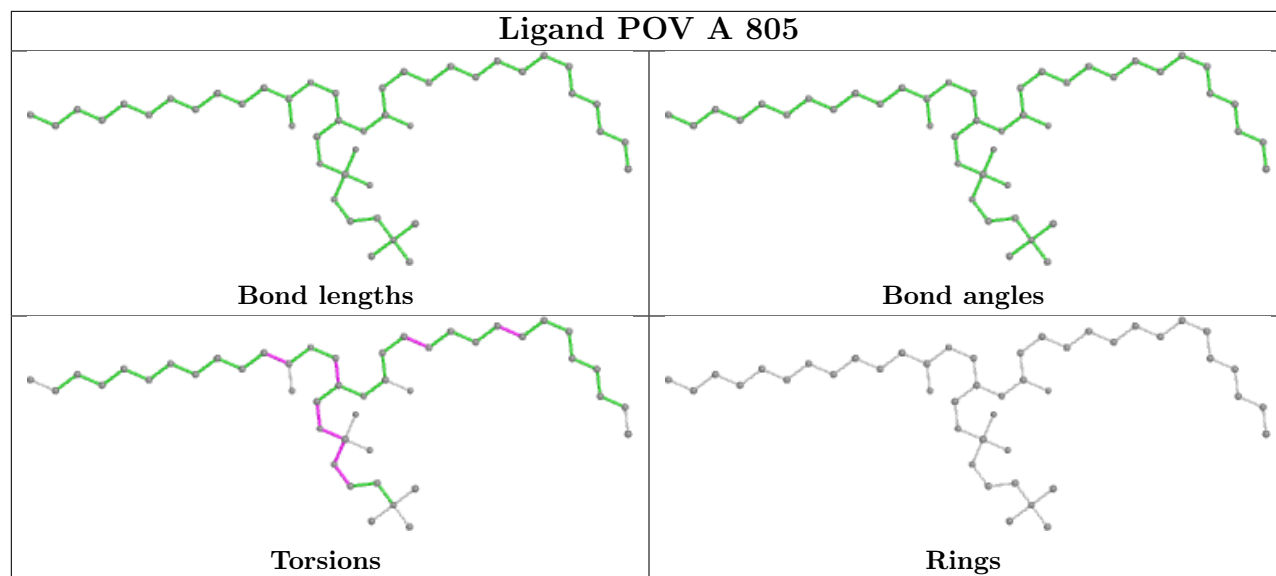
The following is a two-dimensional graphical depiction of Mogul quality analysis of bond lengths, bond angles, torsion angles, and ring geometry for all instances of the Ligand of Interest. In addition, ligands with molecular weight > 250 and outliers as shown on the validation Tables will also be included. For torsion angles, if less than 5% of the Mogul distribution of torsion angles is within 10 degrees of the torsion angle in question, then that torsion angle is considered an outlier. Any bond that is central to one or more torsion angles identified as an outlier by Mogul will be highlighted in the graph. For rings, the root-mean-square deviation (RMSD) between the ring

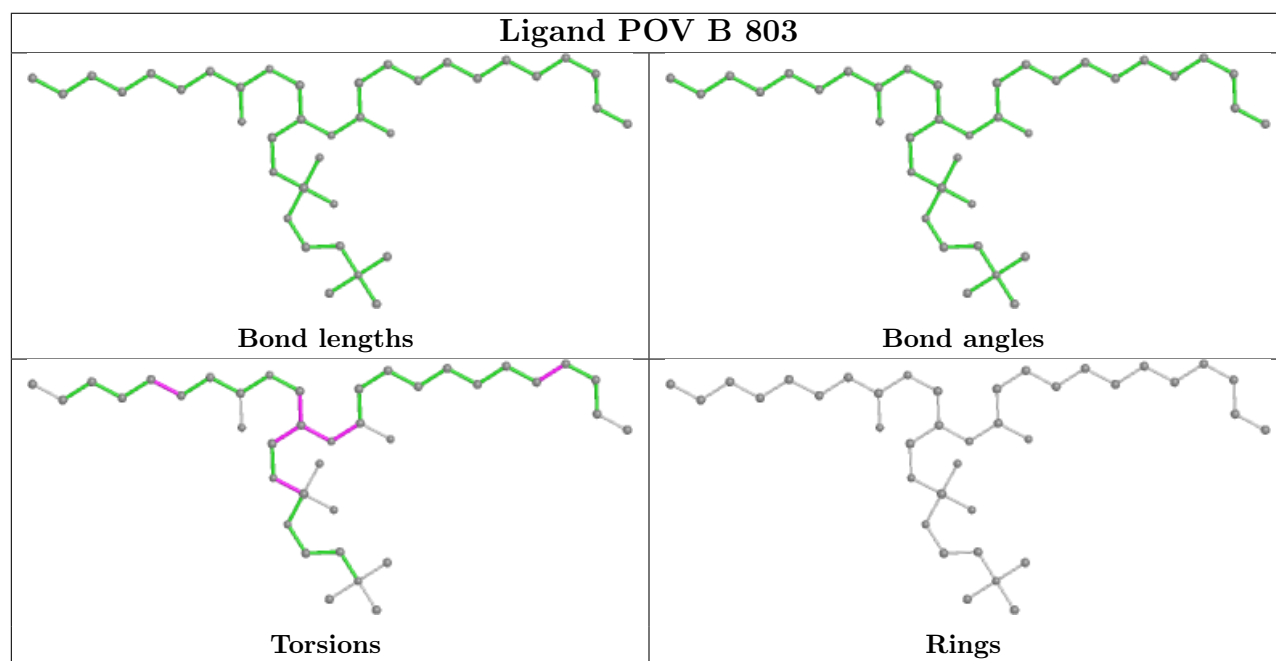
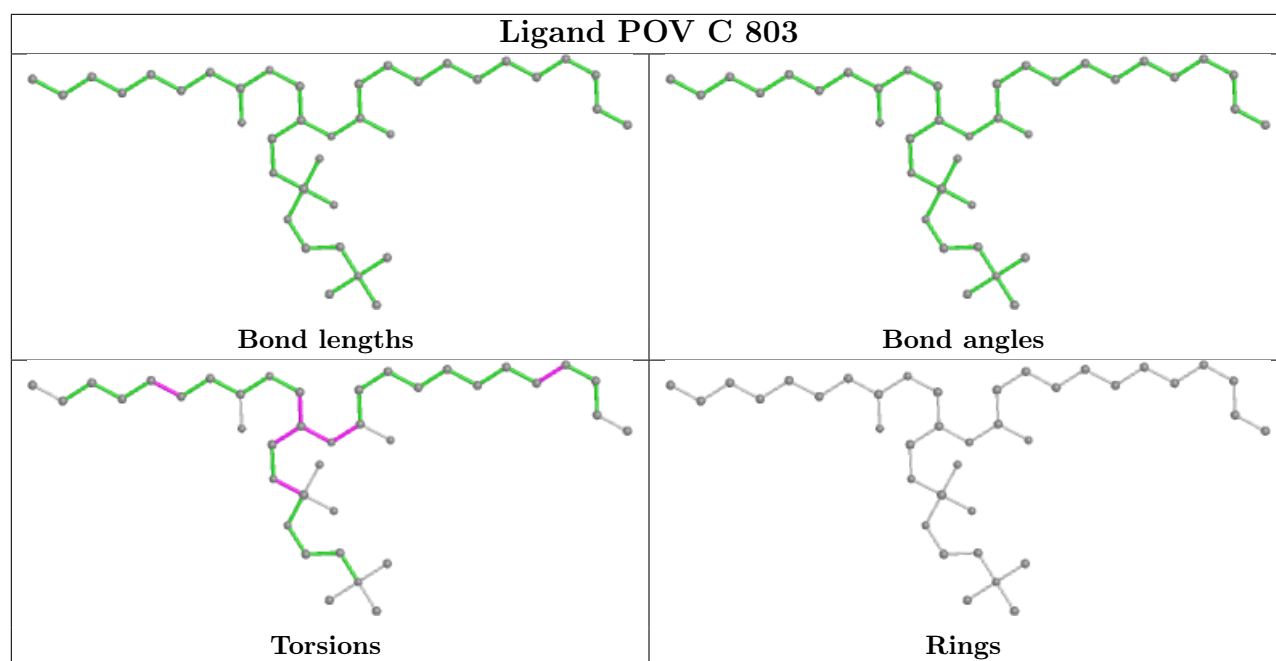


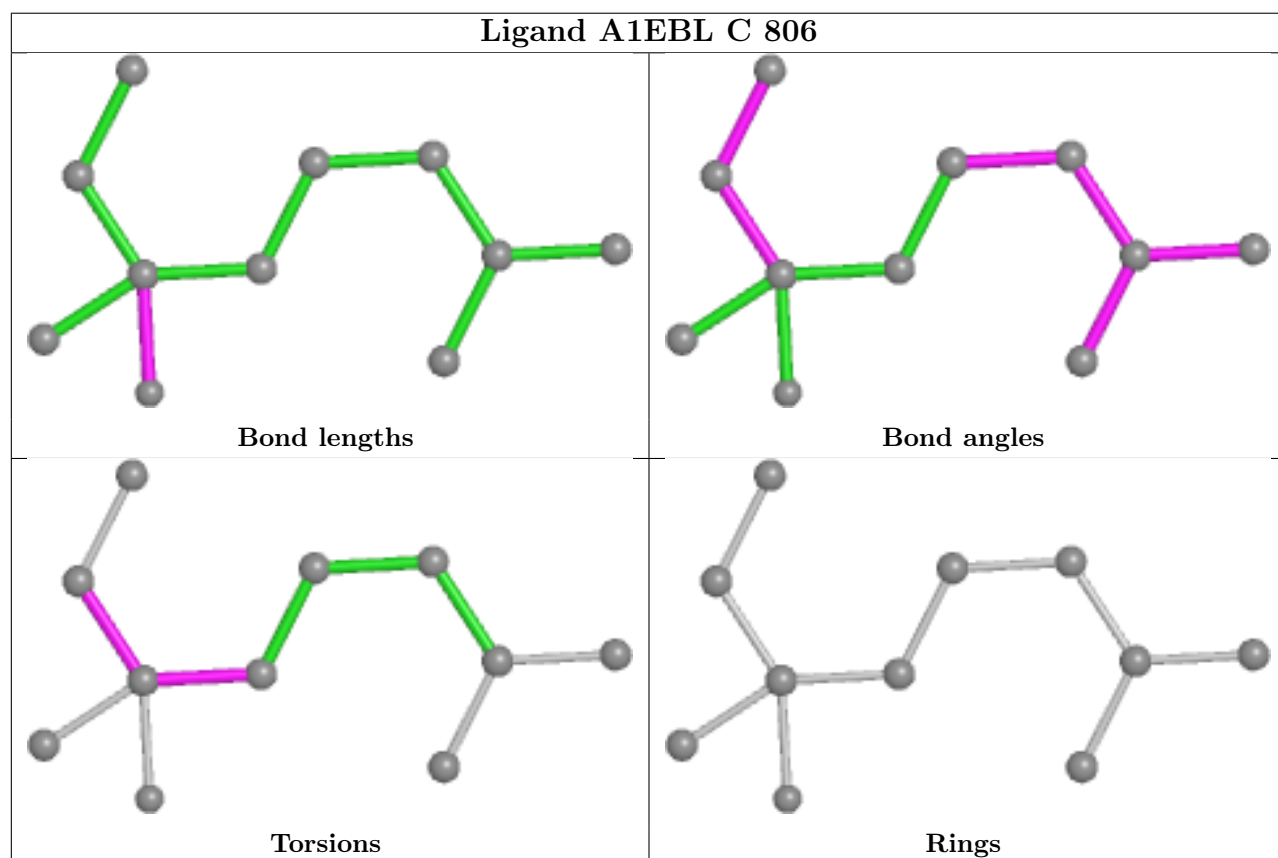
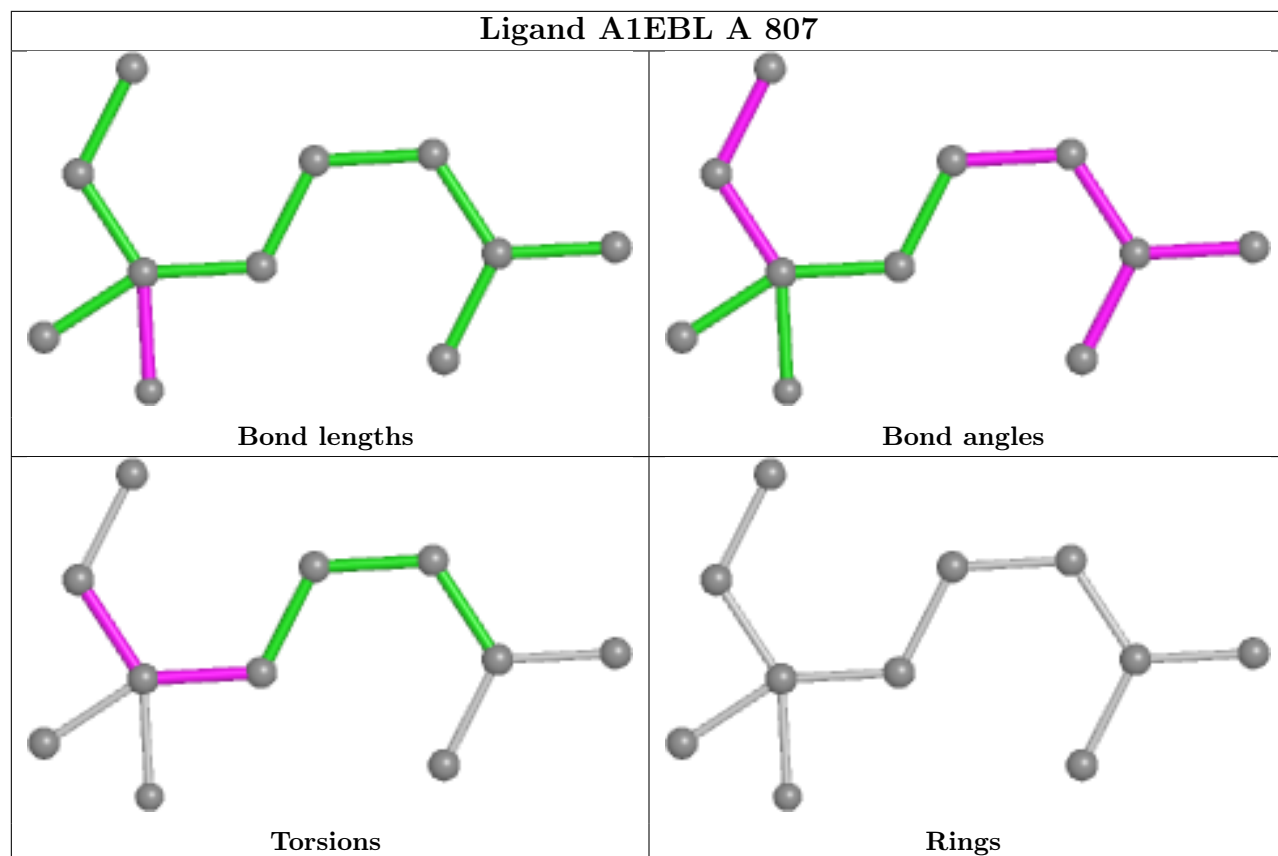
in question and similar rings identified by Mogul is calculated over all ring torsion angles. If the average RMSD is greater than 60 degrees and the minimal RMSD between the ring in question and any Mogul-identified rings is also greater than 60 degrees, then that ring is considered an outlier. The outliers are highlighted in purple. The color gray indicates Mogul did not find sufficient equivalents in the CSD to analyse the geometry.

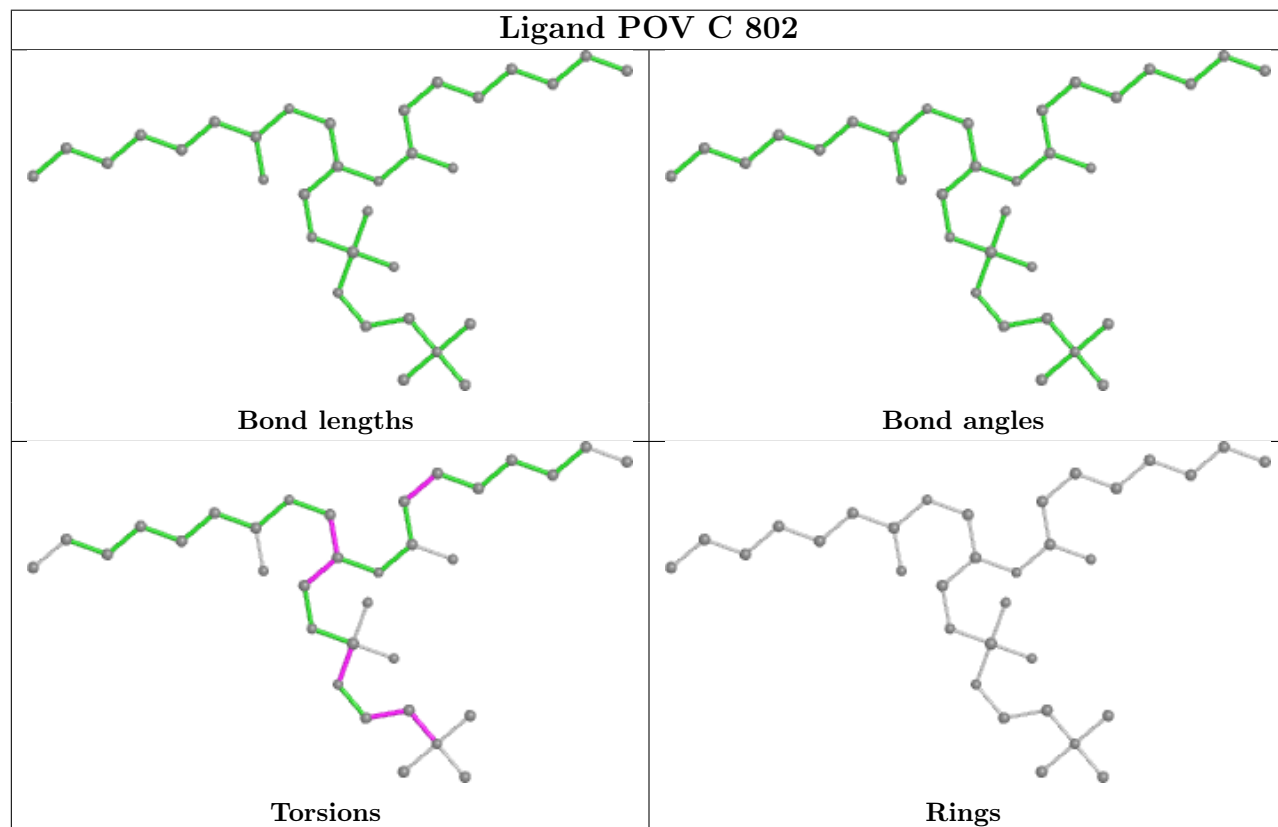
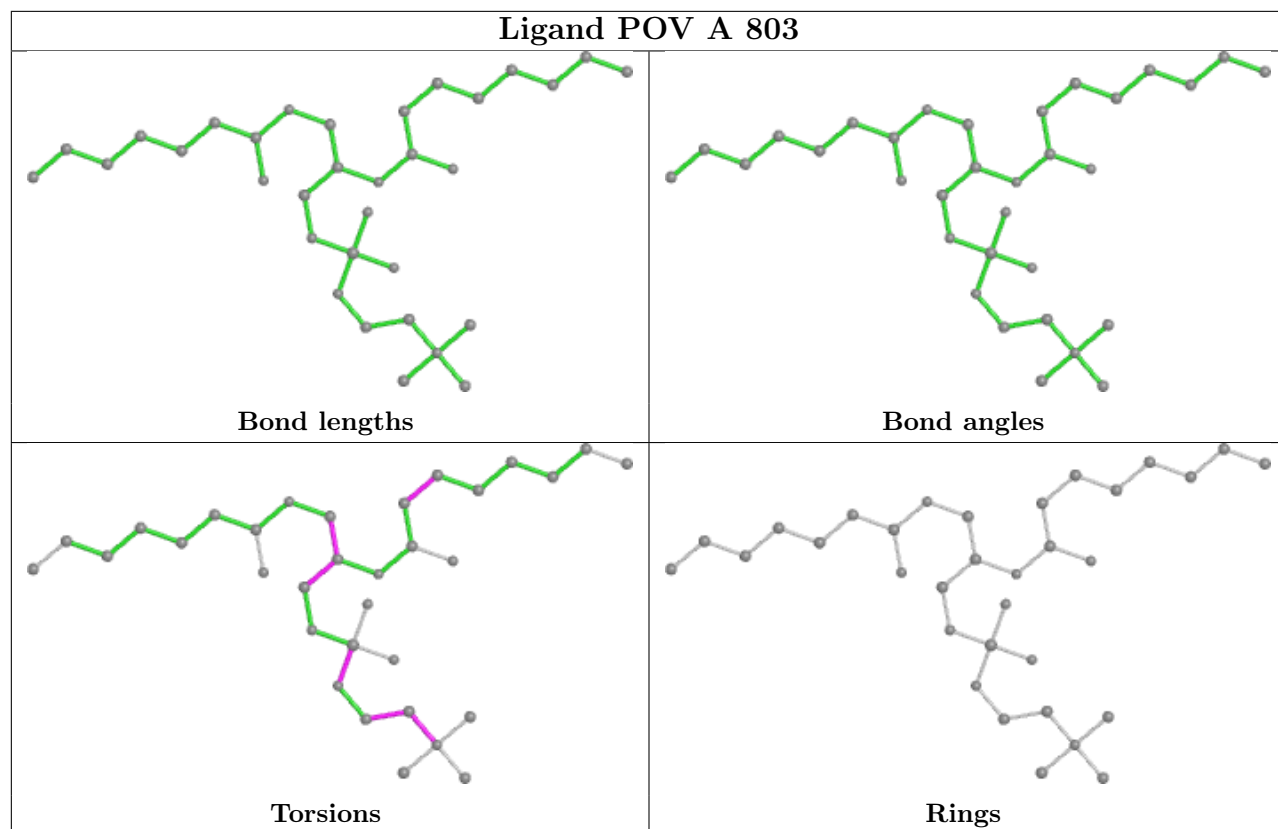


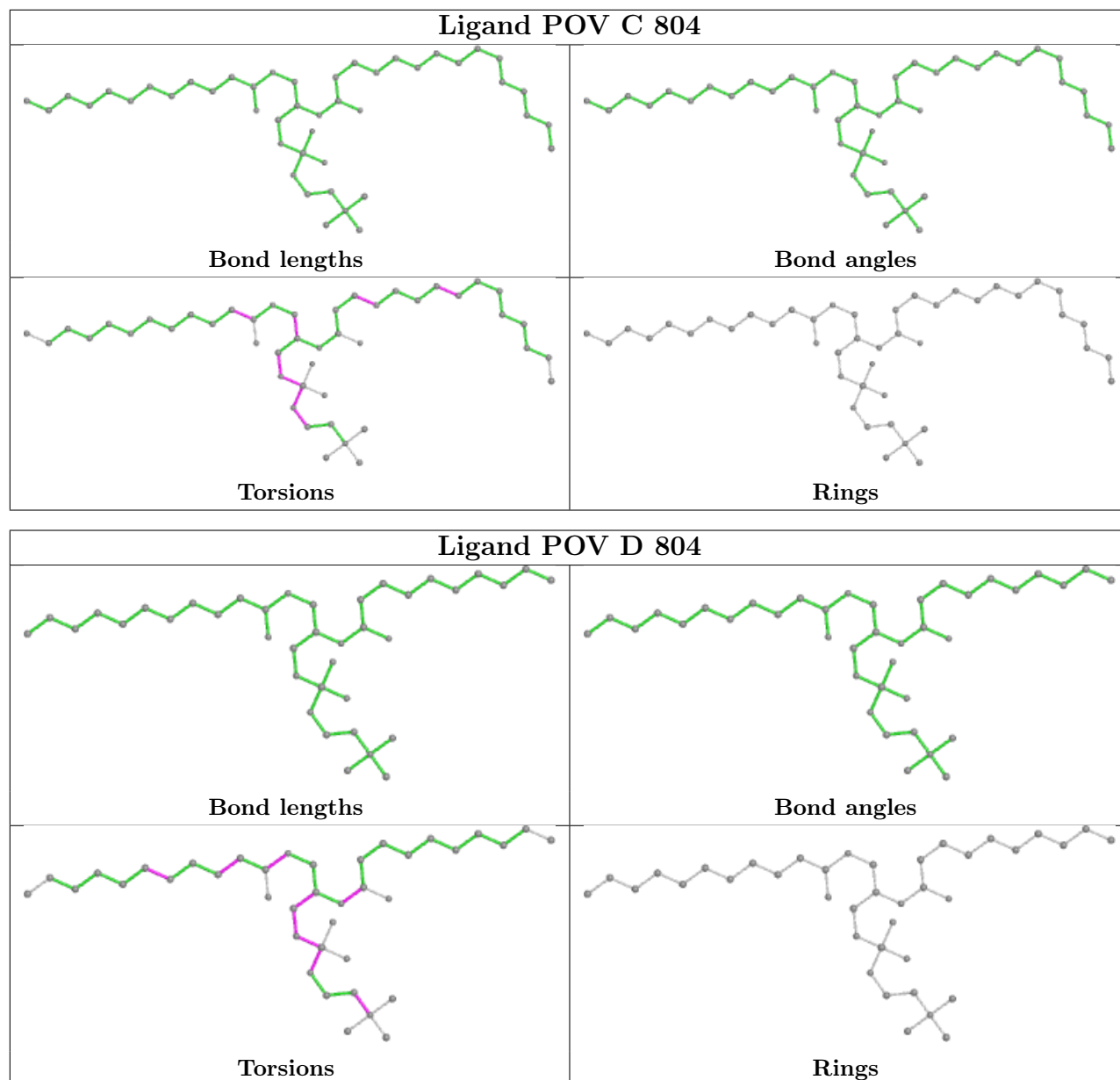


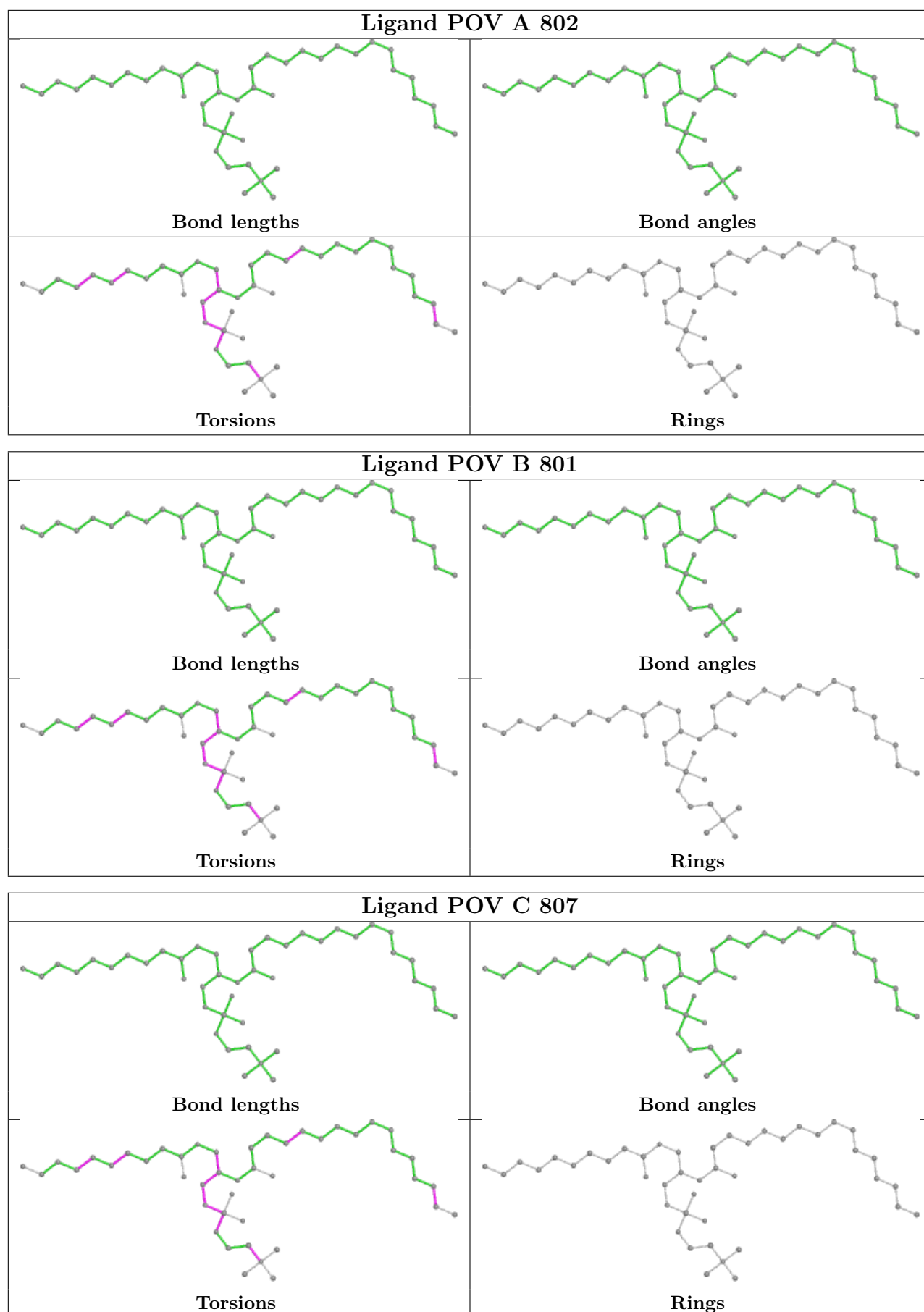




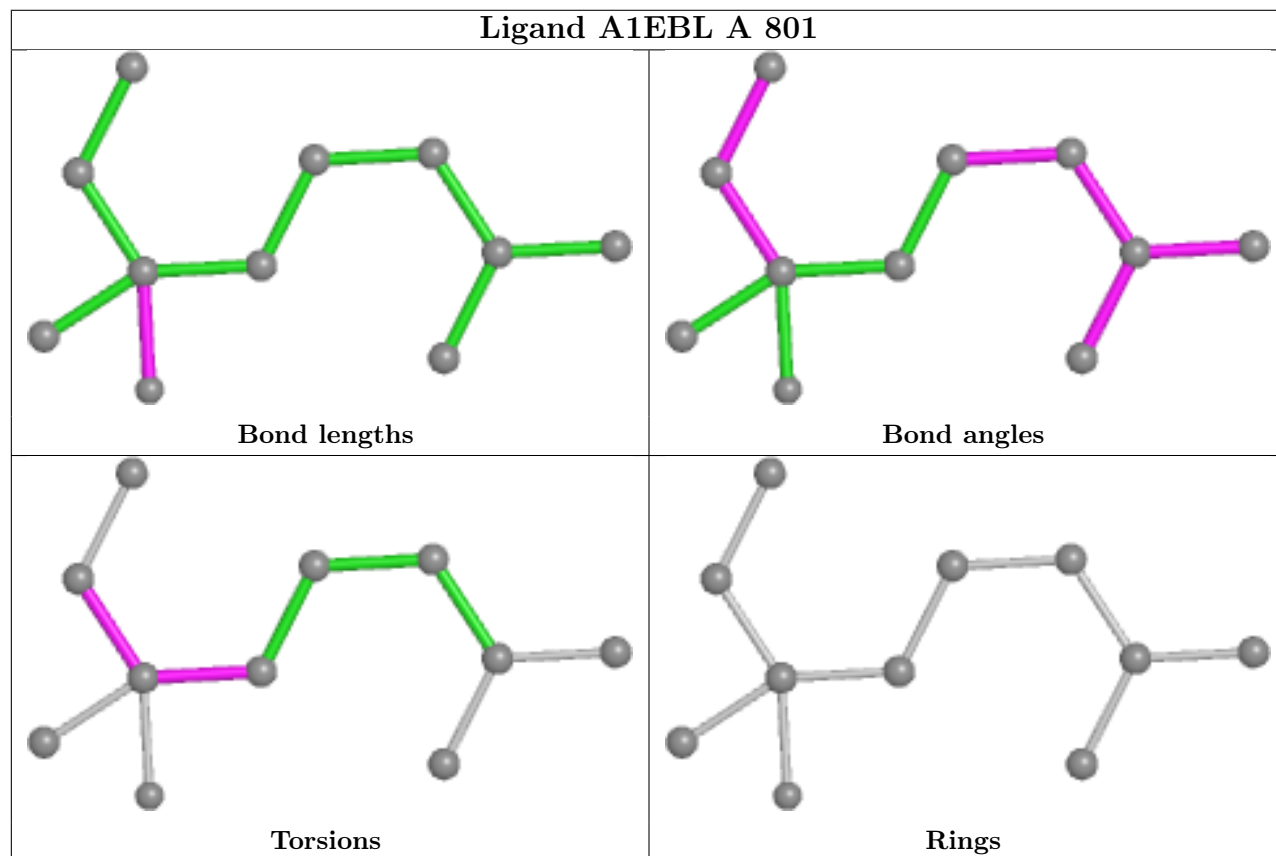
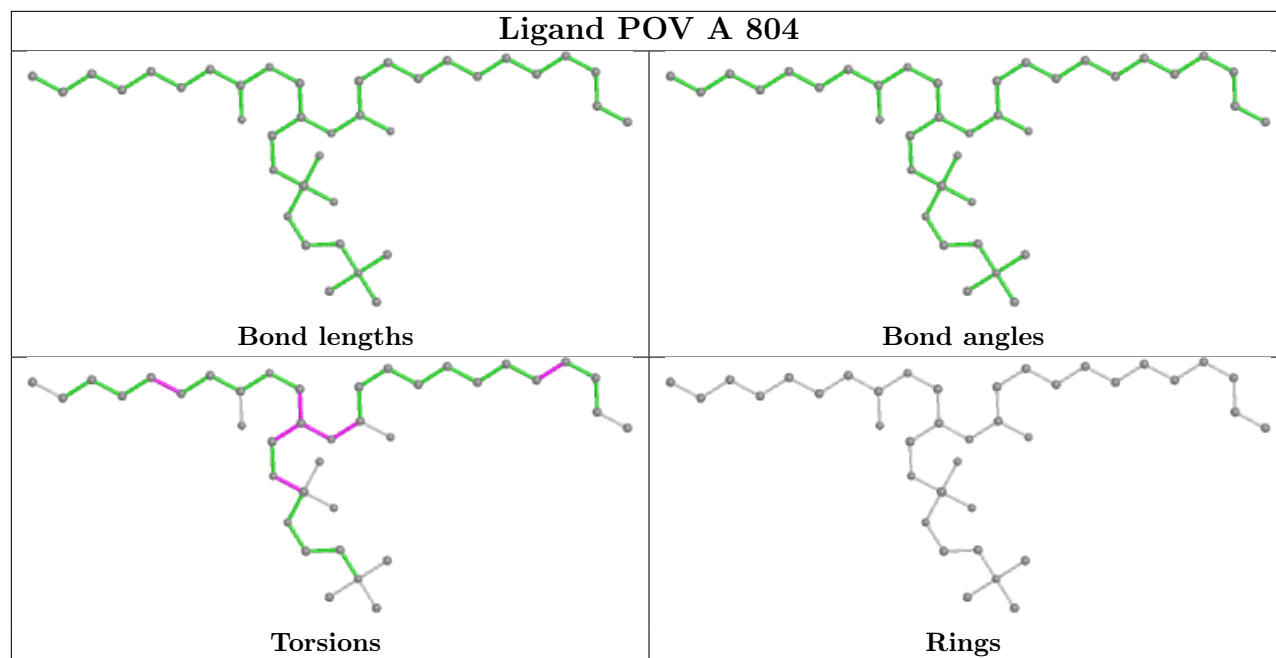


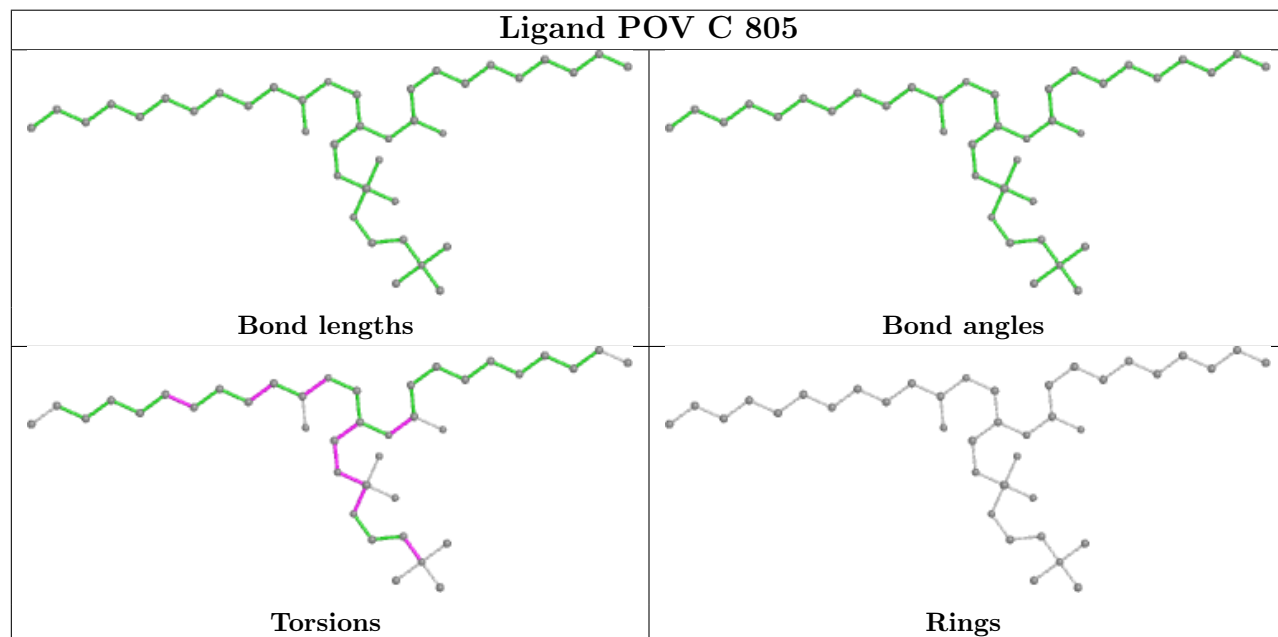
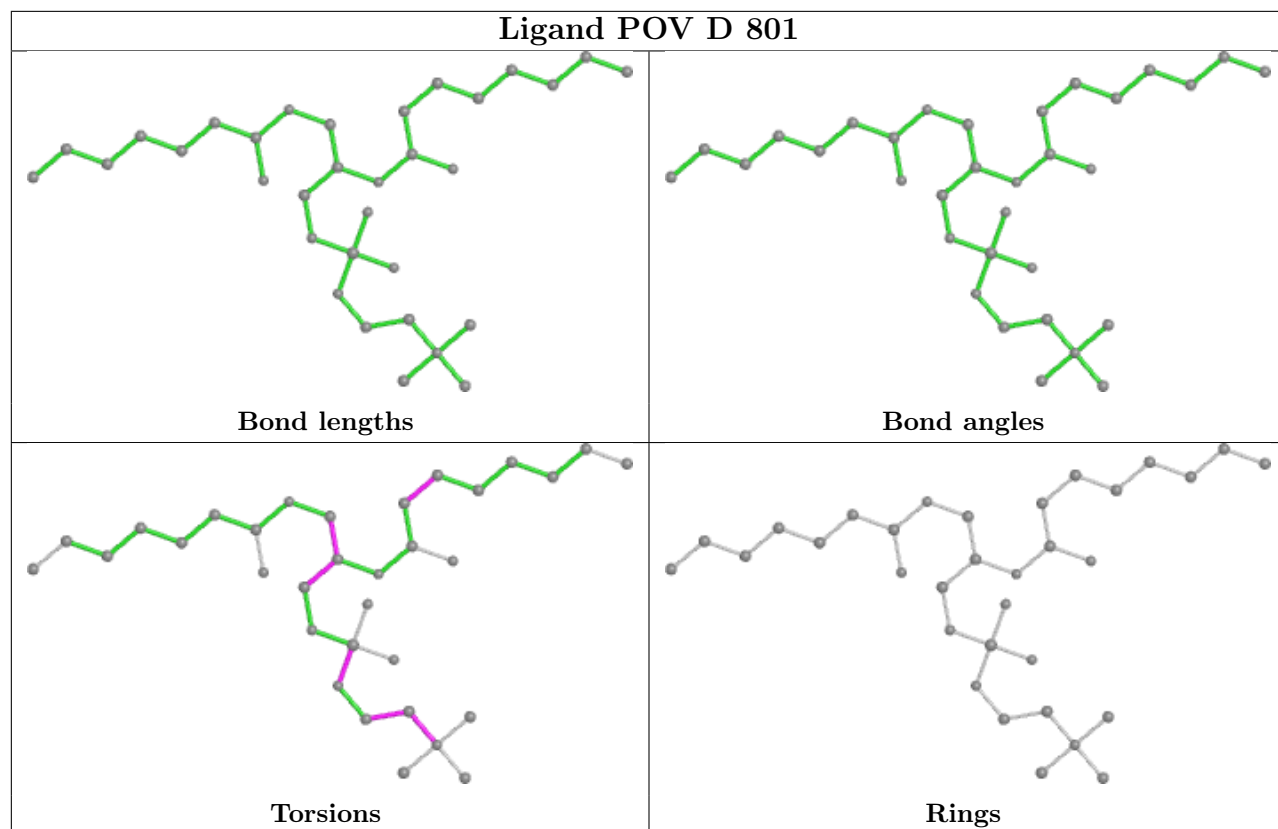


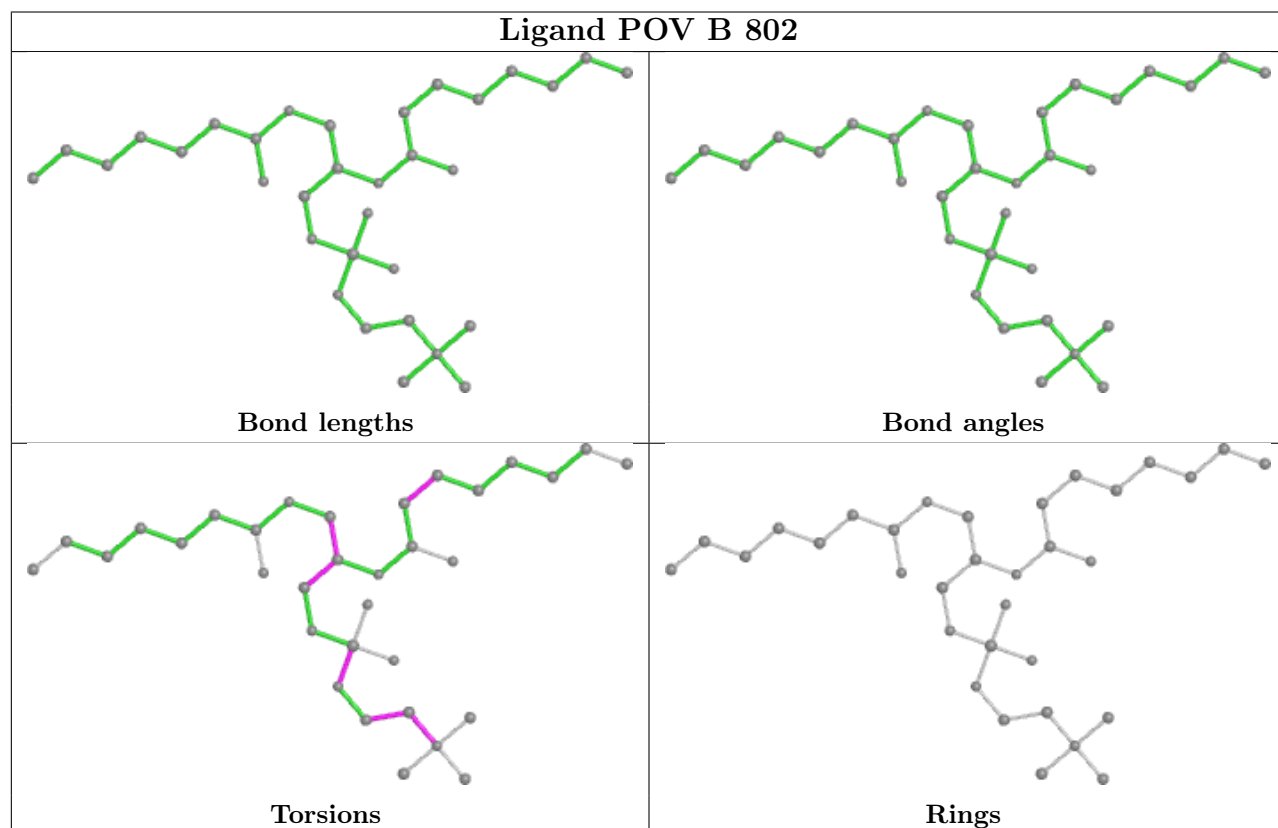
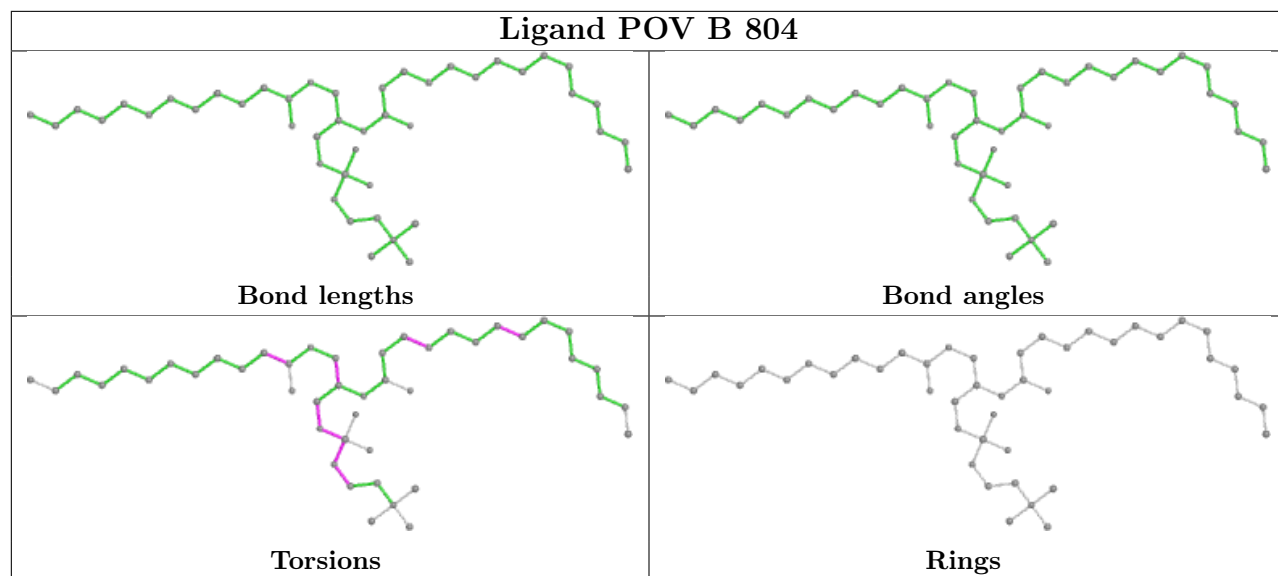


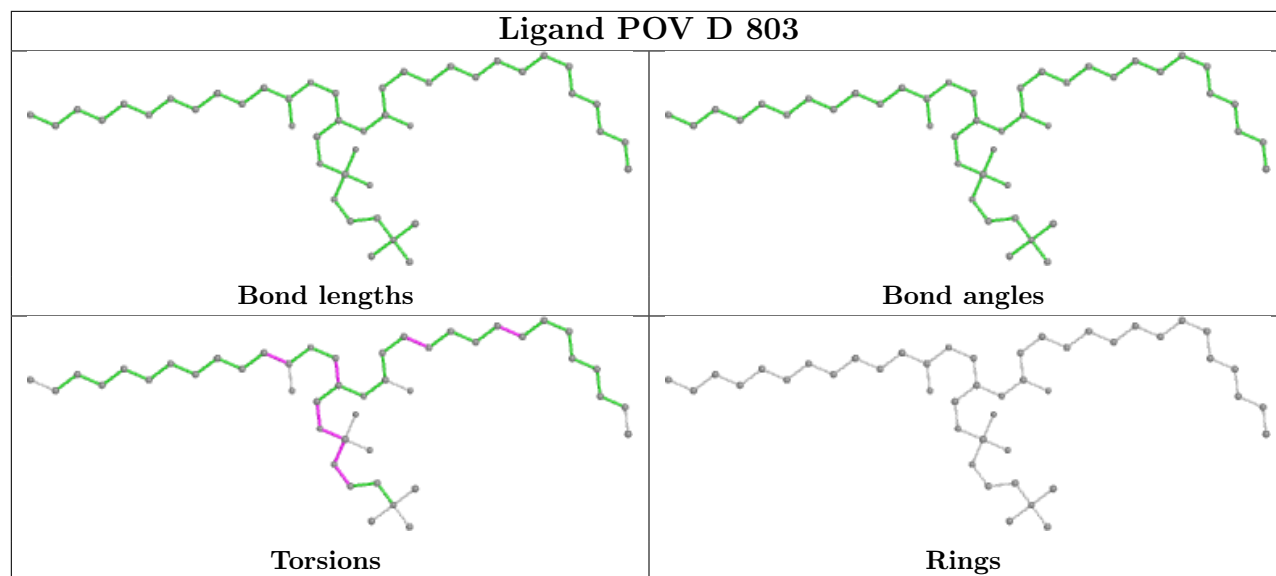












## 5.7 Other polymers [i](#)

There are no such residues in this entry.

## 5.8 Polymer linkage issues [i](#)

There are no chain breaks in this entry.

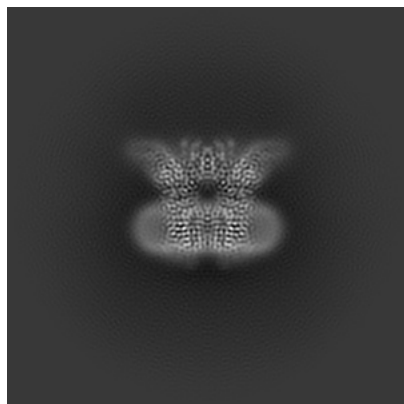
## 6 Map visualisation [i](#)

This section contains visualisations of the EMDB entry EMD-61415. These allow visual inspection of the internal detail of the map and identification of artifacts.

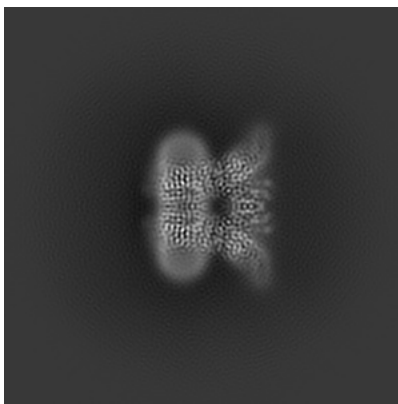
Images derived from a raw map, generated by summing the deposited half-maps, are presented below the corresponding image components of the primary map to allow further visual inspection and comparison with those of the primary map.

### 6.1 Orthogonal projections [i](#)

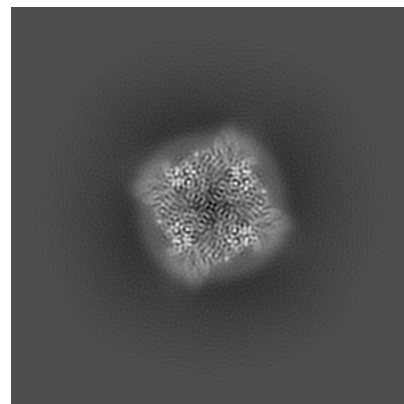
#### 6.1.1 Primary map



X

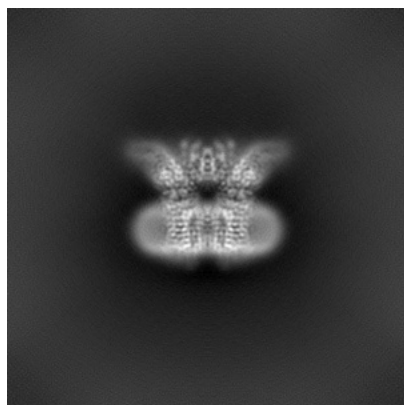


Y

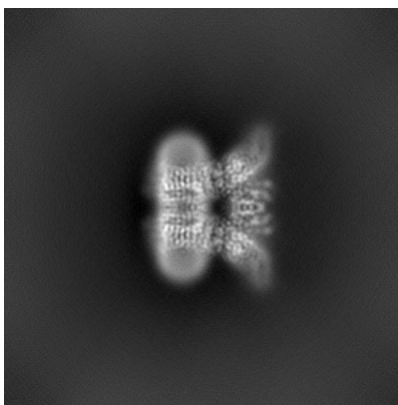


Z

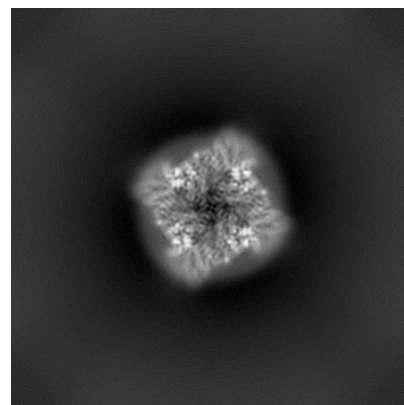
#### 6.1.2 Raw map



X



Y

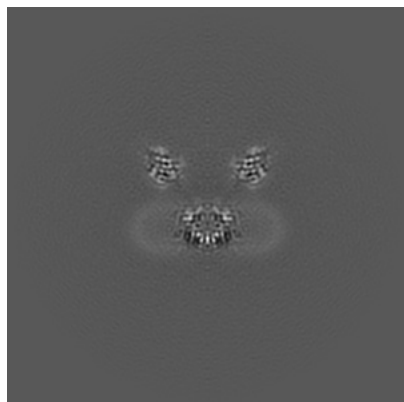


Z

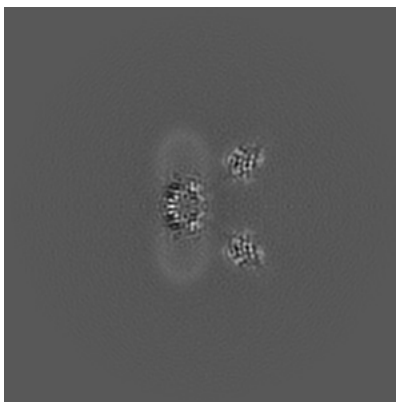
The images above show the map projected in three orthogonal directions.

## 6.2 Central slices [i](#)

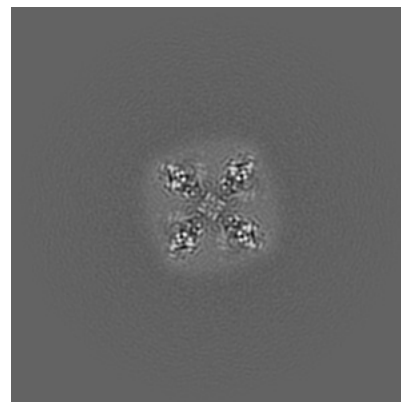
### 6.2.1 Primary map



X Index: 160

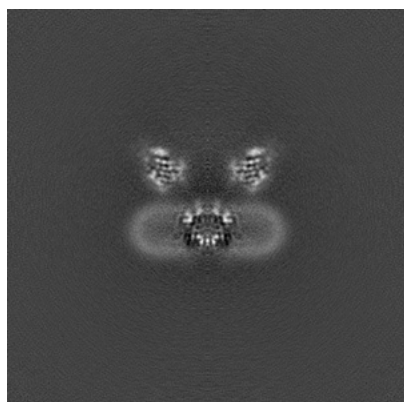


Y Index: 160

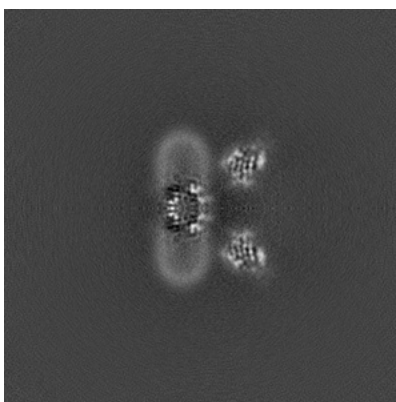


Z Index: 160

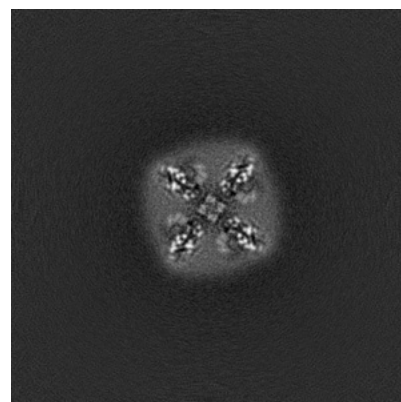
### 6.2.2 Raw map



X Index: 160



Y Index: 160

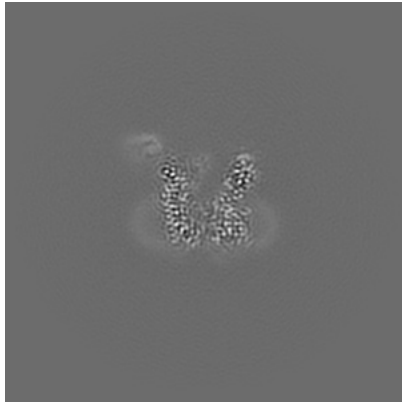


Z Index: 160

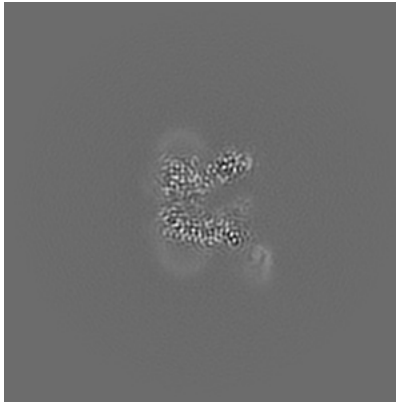
The images above show central slices of the map in three orthogonal directions.

## 6.3 Largest variance slices [i](#)

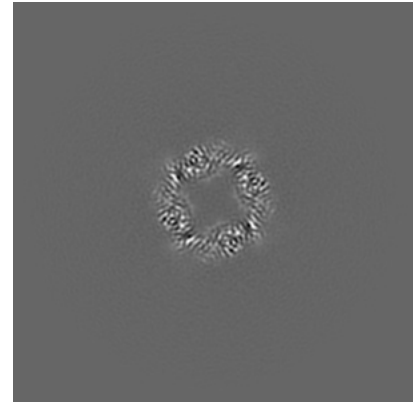
### 6.3.1 Primary map



X Index: 141

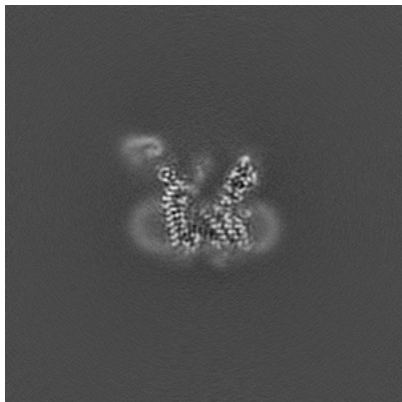


Y Index: 179

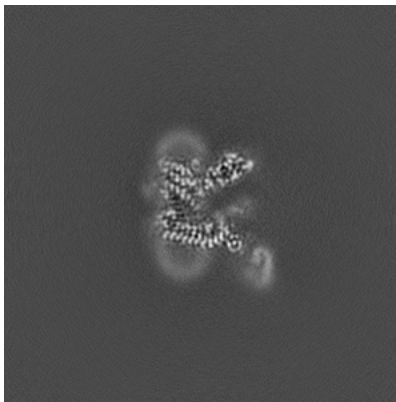


Z Index: 184

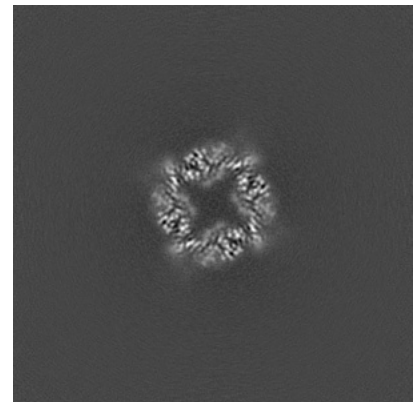
### 6.3.2 Raw map



X Index: 142



Y Index: 178



Z Index: 184

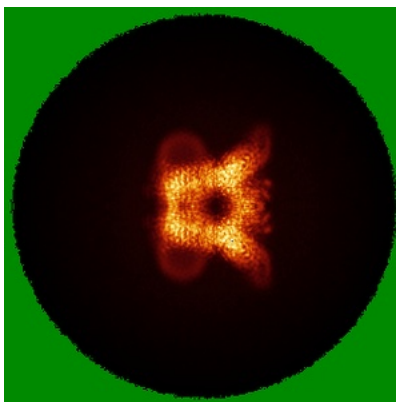
The images above show the largest variance slices of the map in three orthogonal directions.

## 6.4 Orthogonal standard-deviation projections (False-color) [i](#)

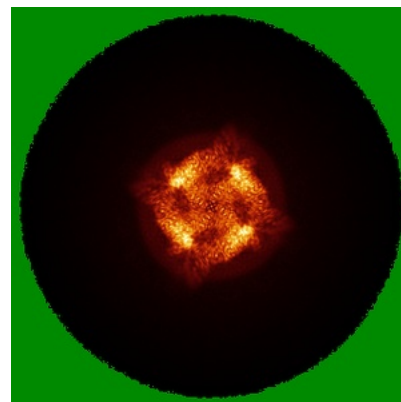
### 6.4.1 Primary map



X

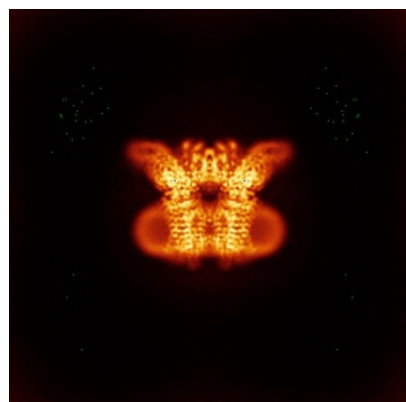


Y

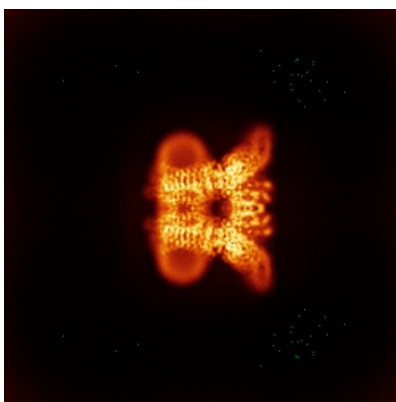


Z

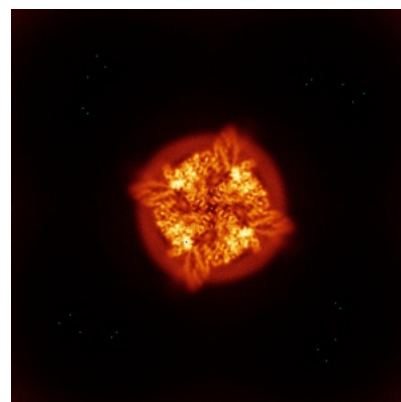
### 6.4.2 Raw map



X



Y



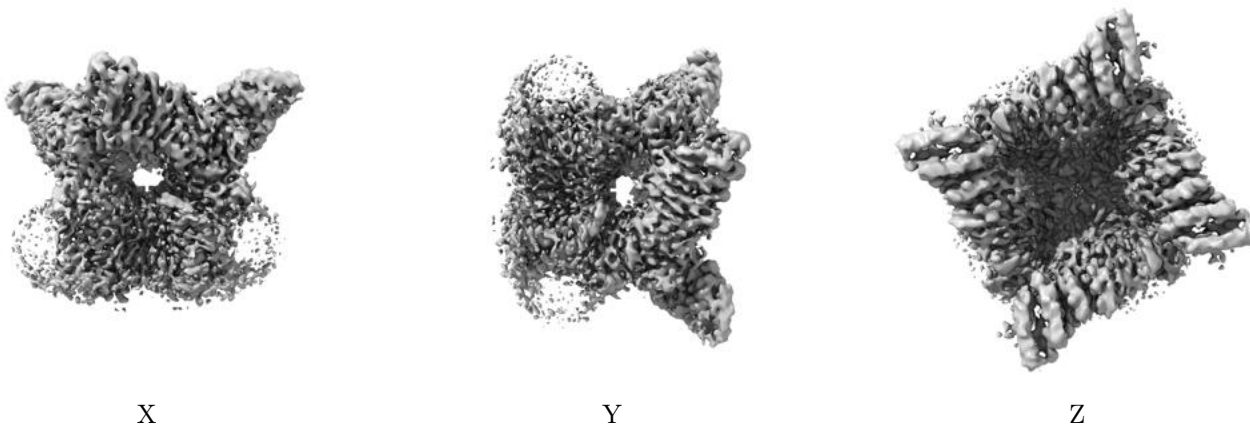
Z

The images above show the map standard deviation projections with false color in three orthogonal directions. Minimum values are shown in green, max in blue, and dark to light orange shades represent small to large values respectively.



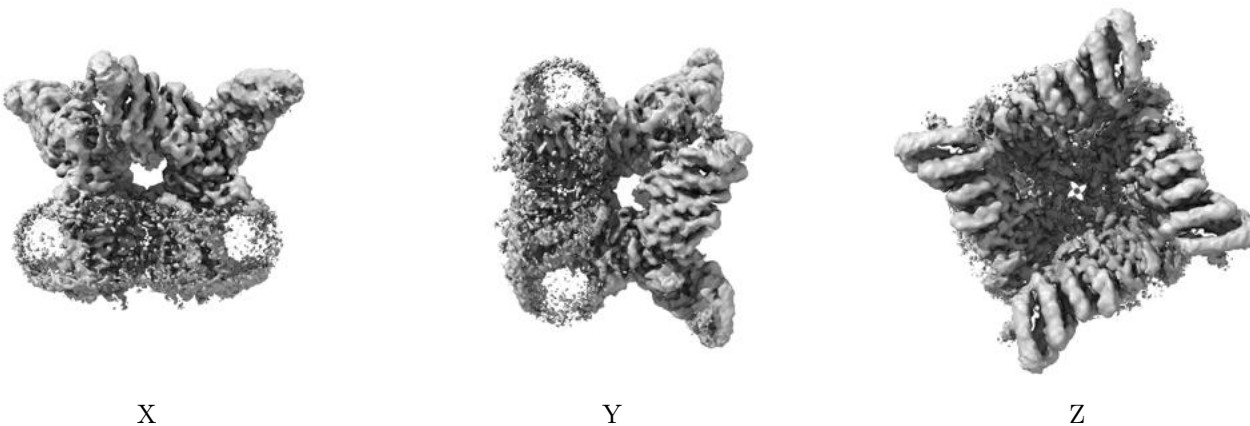
## 6.5 Orthogonal surface views [i](#)

### 6.5.1 Primary map



The images above show the 3D surface view of the map at the recommended contour level 0.16. These images, in conjunction with the slice images, may facilitate assessment of whether an appropriate contour level has been provided.

### 6.5.2 Raw map



These images show the 3D surface of the raw map. The raw map's contour level was selected so that its surface encloses the same volume as the primary map does at its recommended contour level.

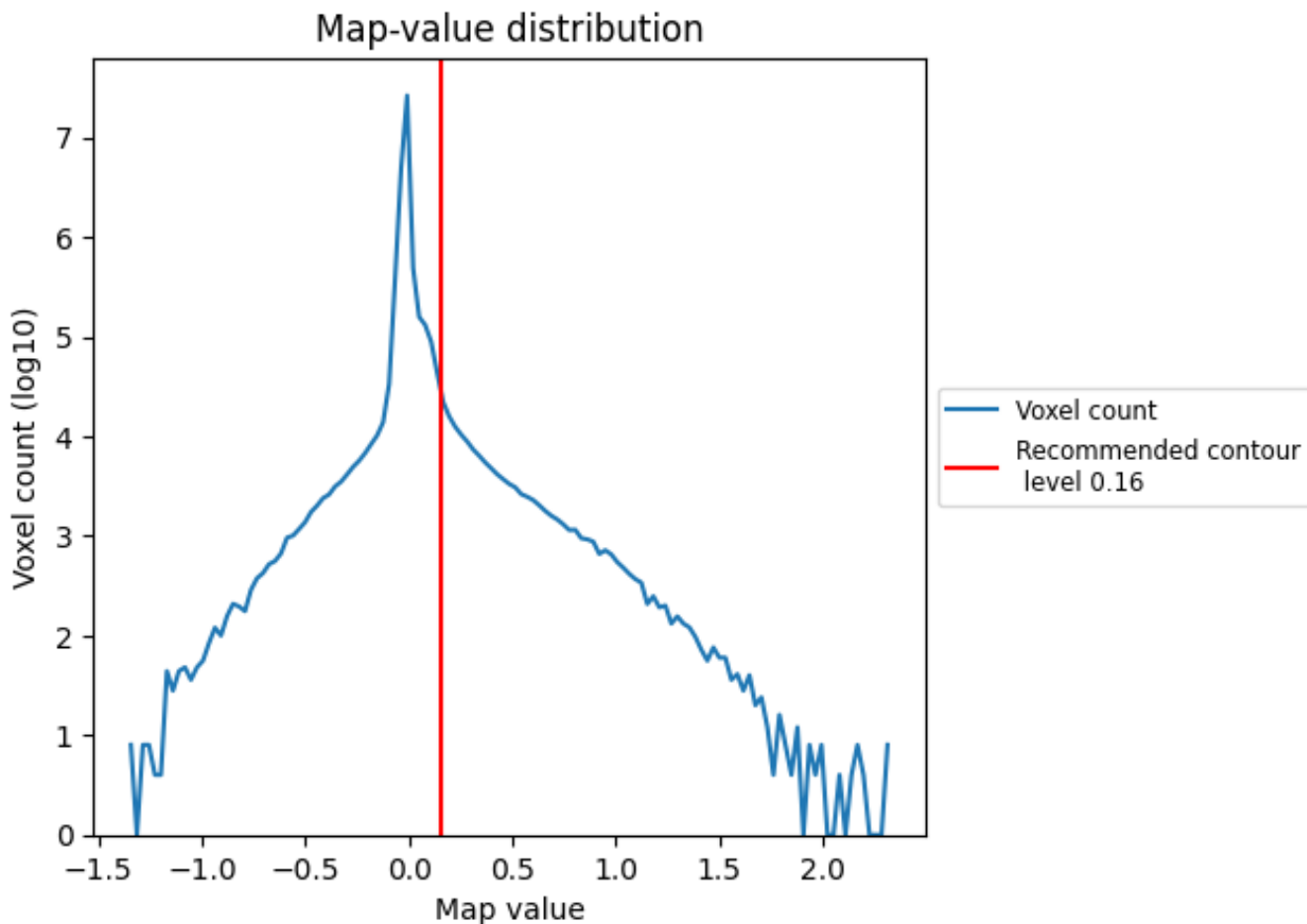
## 6.6 Mask visualisation [i](#)

This section was not generated. No masks/segmentation were deposited.

## 7 Map analysis [i](#)

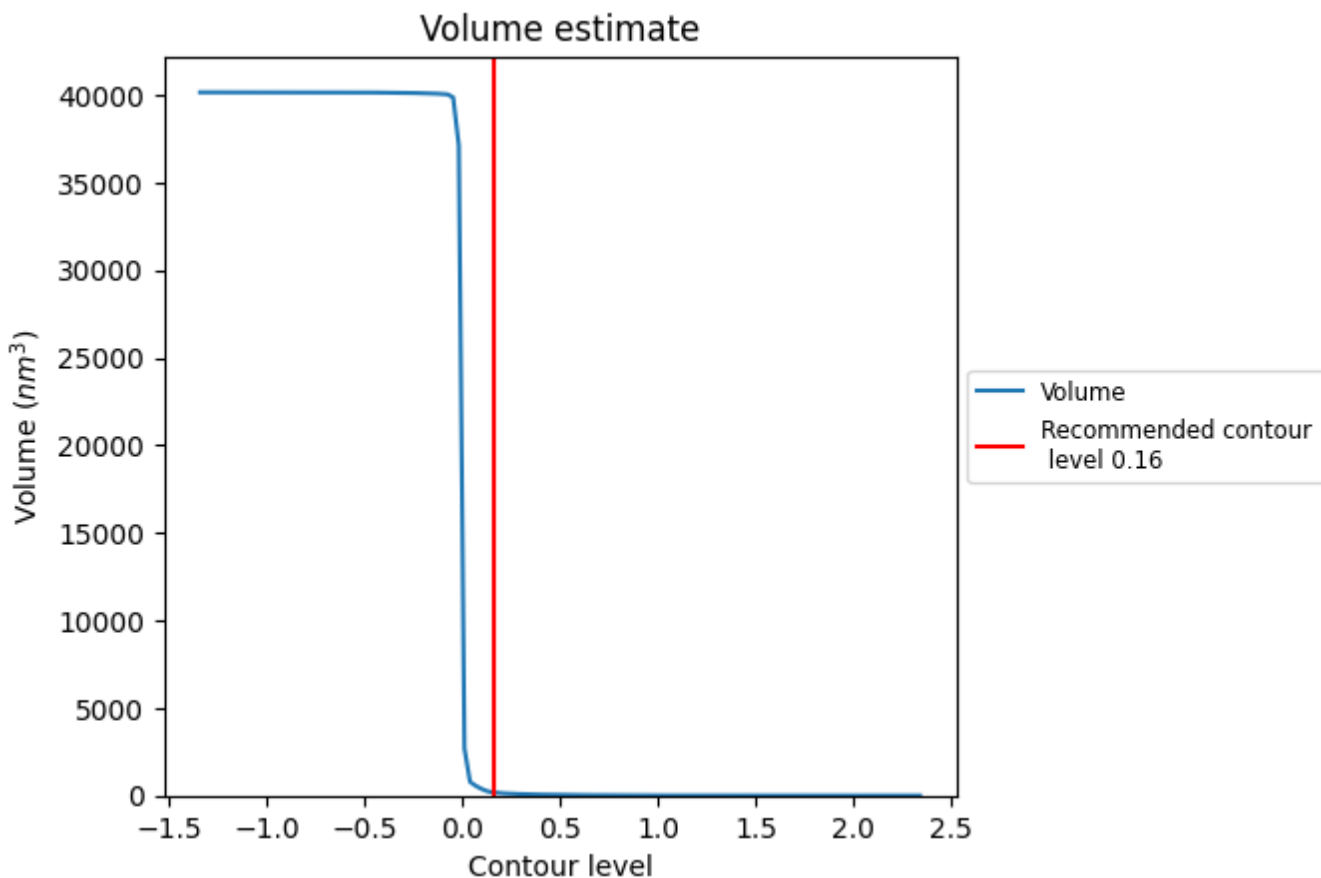
This section contains the results of statistical analysis of the map.

### 7.1 Map-value distribution [i](#)



The map-value distribution is plotted in 128 intervals along the x-axis. The y-axis is logarithmic. A spike in this graph at zero usually indicates that the volume has been masked.

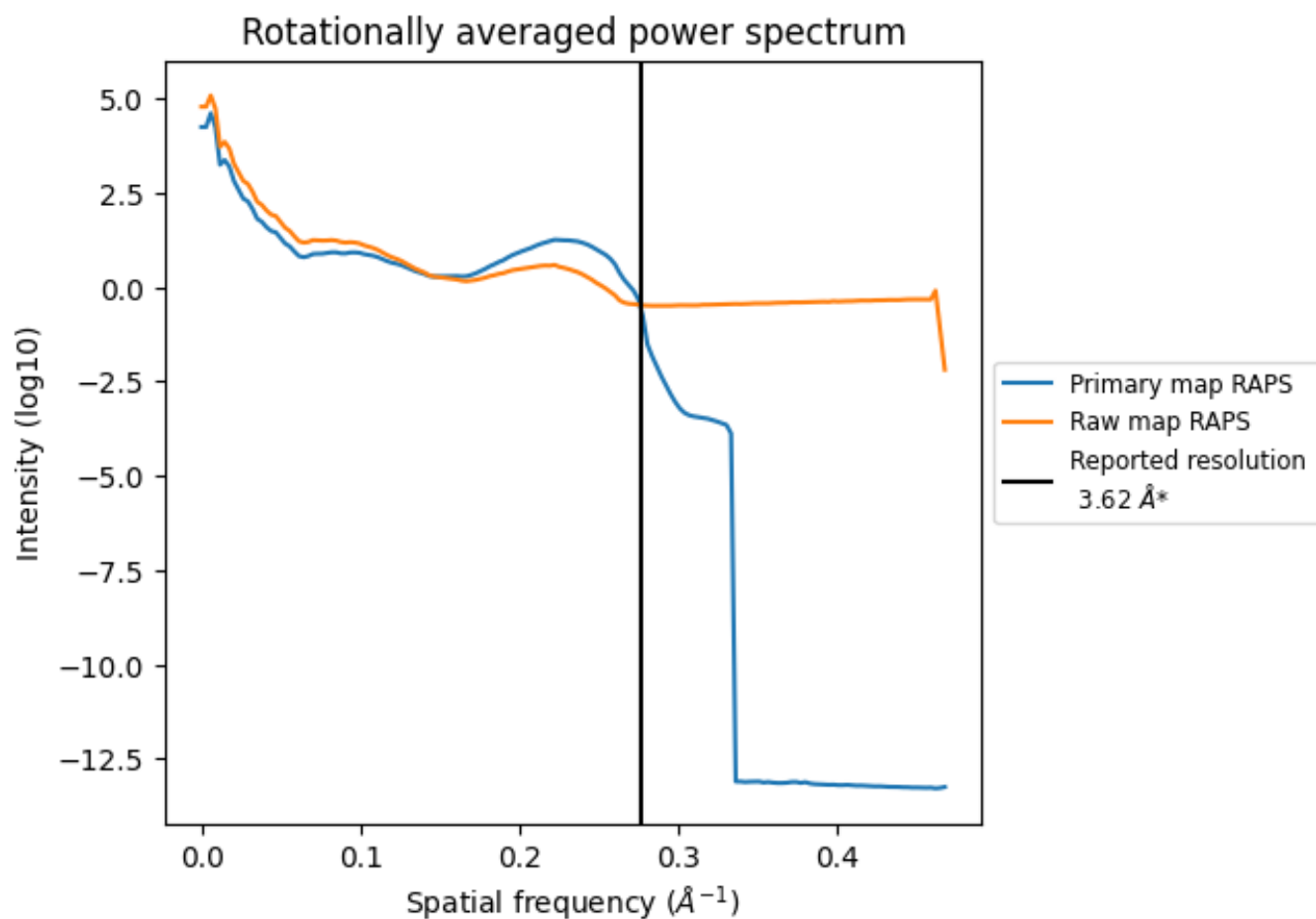
## 7.2 Volume estimate [i](#)



The volume at the recommended contour level is 175  $\text{nm}^3$ ; this corresponds to an approximate mass of 158 kDa.

The volume estimate graph shows how the enclosed volume varies with the contour level. The recommended contour level is shown as a vertical line and the intersection between the line and the curve gives the volume of the enclosed surface at the given level.

### 7.3 Rotationally averaged power spectrum [i](#)

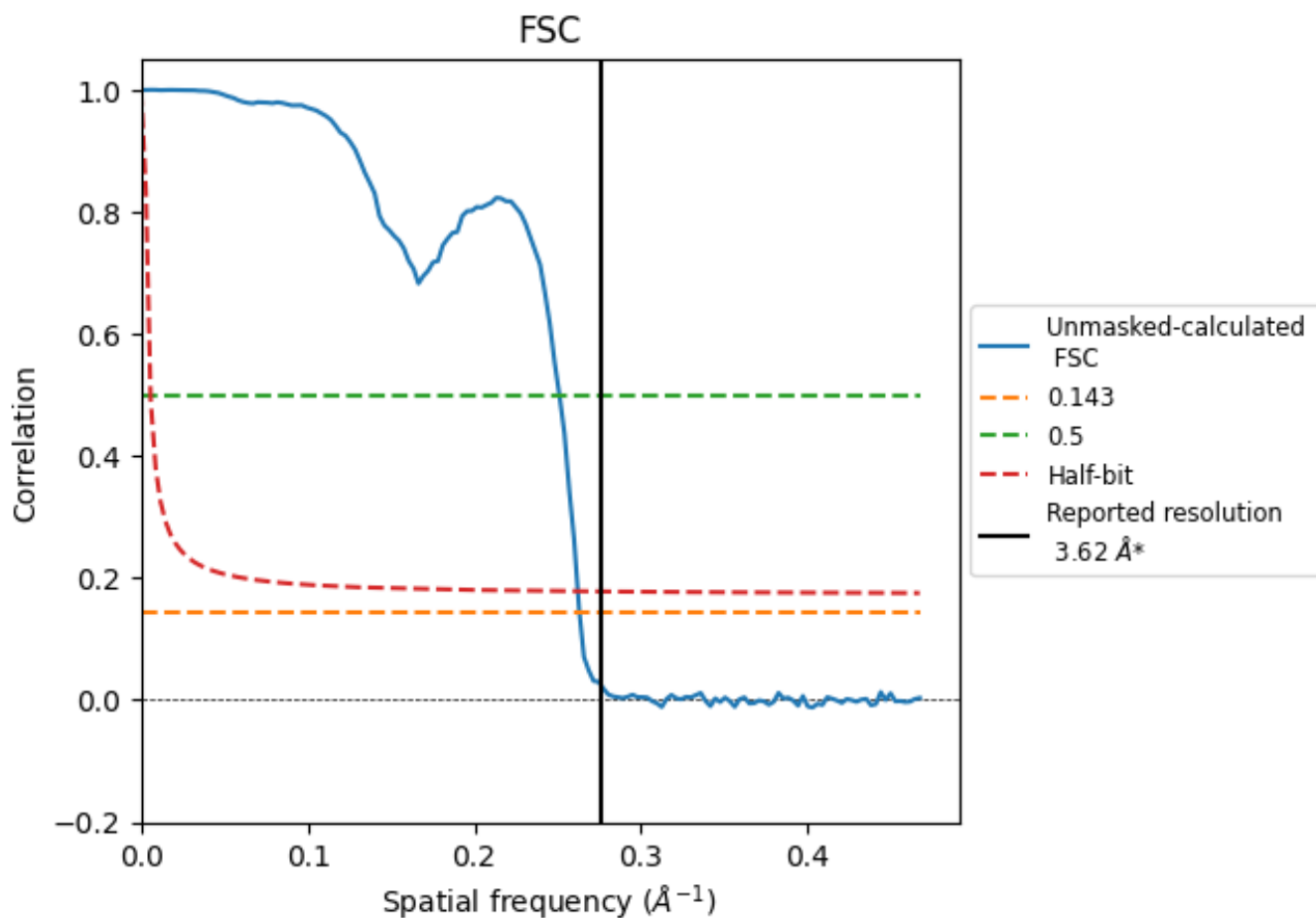


\*Reported resolution corresponds to spatial frequency of 0.276 Å<sup>-1</sup>

## 8 Fourier-Shell correlation [i](#)

Fourier-Shell Correlation (FSC) is the most commonly used method to estimate the resolution of single-particle and subtomogram-averaged maps. The shape of the curve depends on the imposed symmetry, mask and whether or not the two 3D reconstructions used were processed from a common reference. The reported resolution is shown as a black line. A curve is displayed for the half-bit criterion in addition to lines showing the 0.143 gold standard cut-off and 0.5 cut-off.

### 8.1 FSC [i](#)



\*Reported resolution corresponds to spatial frequency of 0.276  $\text{\AA}^{-1}$

## 8.2 Resolution estimates [i](#)

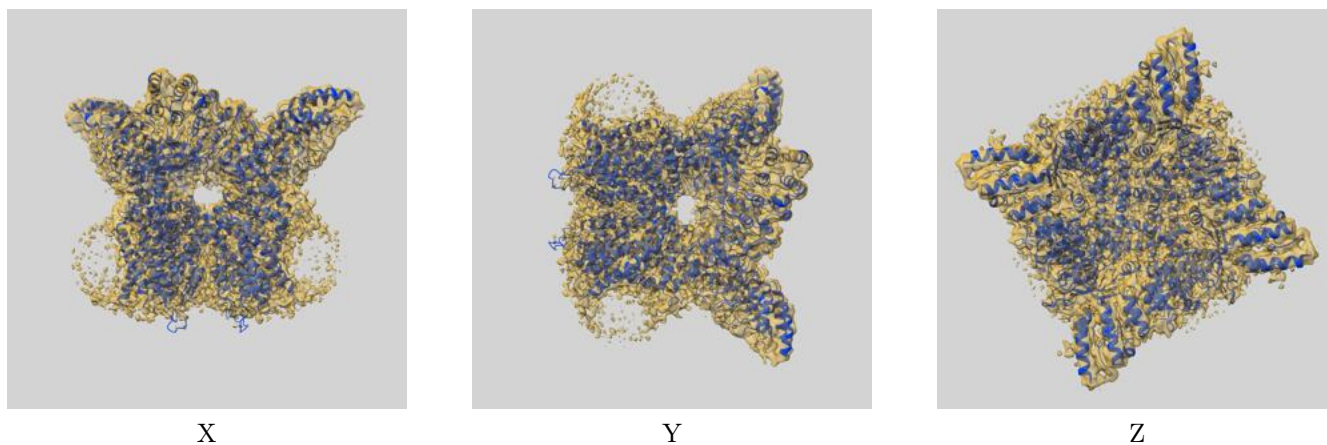
Resolution estimate (Å)	Estimation criterion (FSC cut-off)		
	0.143	0.5	Half-bit
Reported by author	3.62	-	-
Author-provided FSC curve	-	-	-
Unmasked-calculated*	3.80	3.98	3.82

\*Resolution estimate based on FSC curve calculated by comparison of deposited half-maps.

## 9 Map-model fit [i](#)

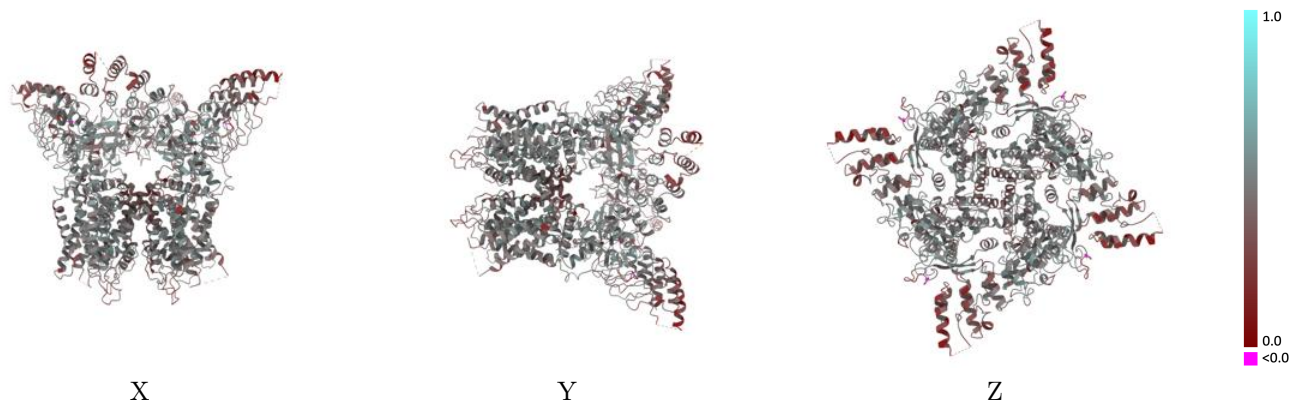
This section contains information regarding the fit between EMDB map EMD-61415 and PDB model 9JEF. Per-residue inclusion information can be found in section 3 on page 7.

### 9.1 Map-model overlay [i](#)



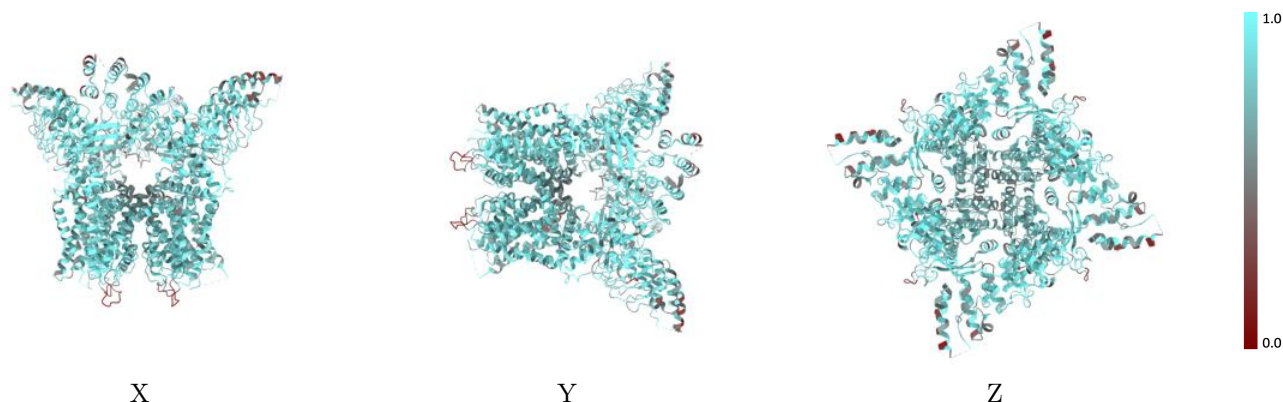
The images above show the 3D surface view of the map at the recommended contour level 0.16 at 50% transparency in yellow overlaid with a ribbon representation of the model coloured in blue. These images allow for the visual assessment of the quality of fit between the atomic model and the map.

## 9.2 Q-score mapped to coordinate model [i](#)



The images above show the model with each residue coloured according to its Q-score. This shows their resolvability in the map with higher Q-score values reflecting better resolvability. Please note: Q-score is calculating the resolvability of atoms, and thus high values are only expected at resolutions at which atoms can be resolved. Low Q-score values may therefore be expected for many entries.

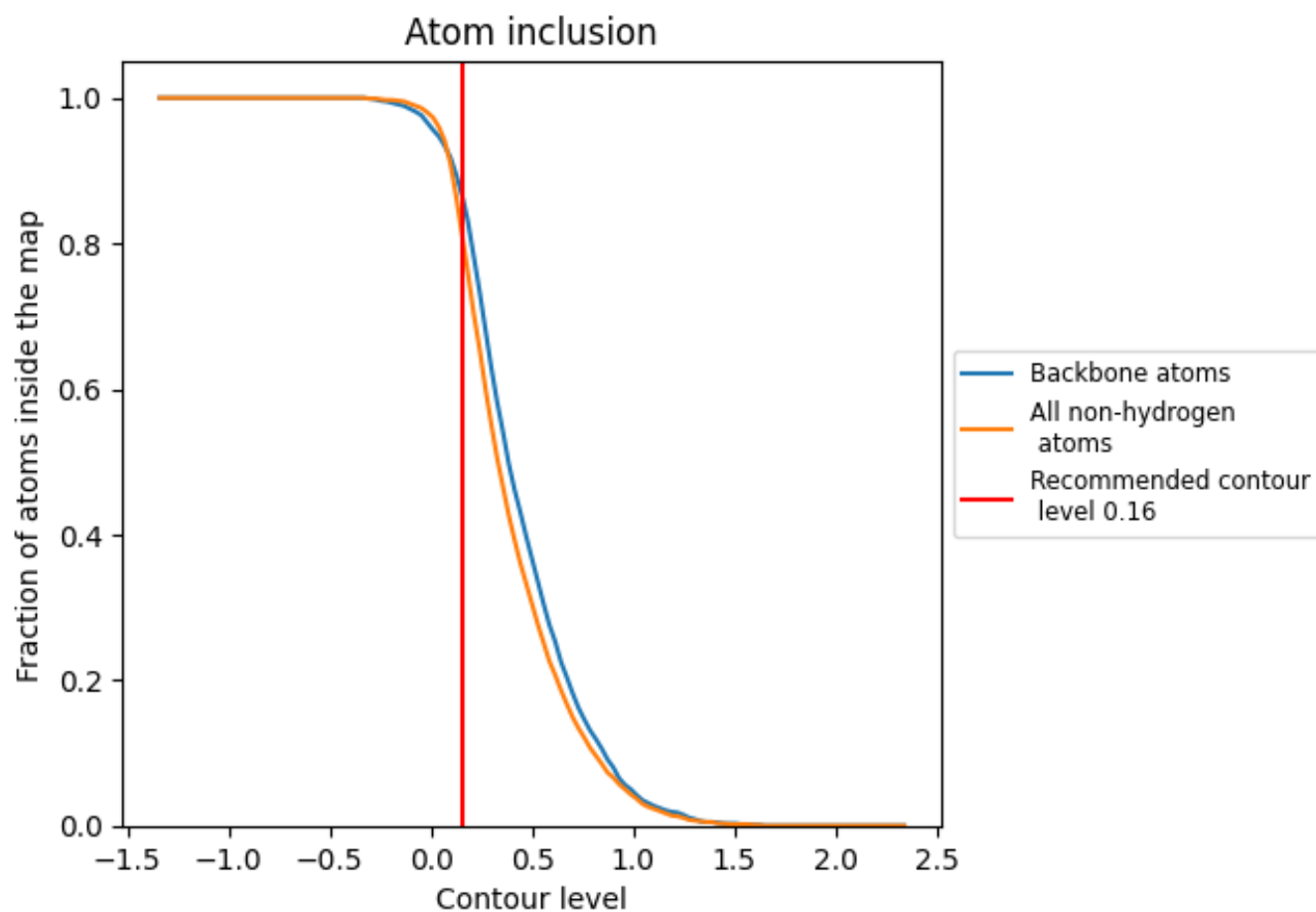
## 9.3 Atom inclusion mapped to coordinate model [i](#)



The images above show the model with each residue coloured according to its atom inclusion. This shows to what extent they are inside the map at the recommended contour level (0.16).










## 9.4 Atom inclusion [i](#)



At the recommended contour level, 86% of all backbone atoms, 80% of all non-hydrogen atoms, are inside the map.

## 9.5 Map-model fit summary [i](#)

The table lists the average atom inclusion at the recommended contour level (0.16) and Q-score for the entire model and for each chain.

Chain	Atom inclusion	Q-score
All	 0.8010	 0.4370
A	 0.8010	 0.4380
B	 0.8000	 0.4360
C	 0.8000	 0.4370
D	 0.8010	 0.4360

