



Full wwPDB EM Validation Report ⓘ

Apr 6, 2025 – 01:46 AM JST

PDB ID : 9IYQ / pdb_00009iyq
EMDB ID : EMD-61001
Title : Structure of the human GluN1-N2B NMDA receptors in the Mg²⁺ free state
Authors : Huang, X.; Sun, X.; Zhu, S.
Deposited on : 2024-07-31
Resolution : 3.18 Å(reported)

This is a Full wwPDB EM Validation Report for a publicly released PDB entry.

We welcome your comments at validation@mail.wwpdb.org

A user guide is available at

<https://www.wwpdb.org/validation/2017/EMValidationReportHelp>

with specific help available everywhere you see the ⓘ symbol.

The types of validation reports are described at

<http://www.wwpdb.org/validation/2017/FAQs#types>.

The following versions of software and data (see [references ⓘ](#)) were used in the production of this report:

EMDB validation analysis : **FAILED**
Mogul : 1.8.5 (274361), CSD as541be (2020)
MolProbity : 4.02b-467
buster-report : 1.1.7 (2018)
Percentile statistics : 20231227.v01 (using entries in the PDB archive December 27th 2023)
MapQ : **FAILED**
Ideal geometry (proteins) : Engh & Huber (2001)
Ideal geometry (DNA, RNA) : Parkinson et al. (1996)
Validation Pipeline (wwPDB-VP) : 2.42

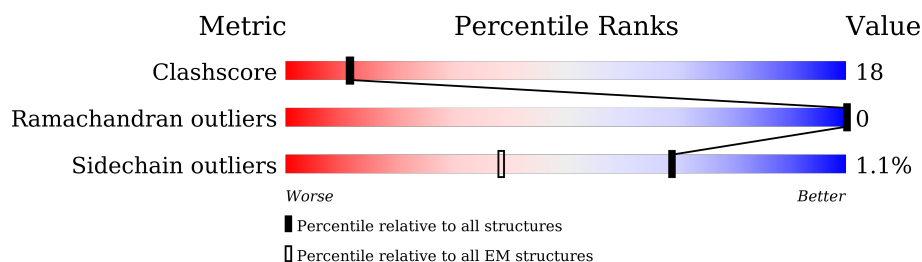
1 Overall quality at a glance

The following experimental techniques were used to determine the structure:

ELECTRON MICROSCOPY

The reported resolution of this entry is 3.18 Å.

Percentile scores (ranging between 0-100) for global validation metrics of the entry are shown in the following graphic. The table shows the number of entries on which the scores are based.



Metric	Whole archive (#Entries)	EM structures (#Entries)
Clashscore	210492	15764
Ramachandran outliers	207382	16835
Sidechain outliers	206894	16415

The table below summarises the geometric issues observed across the polymeric chains and their fit to the map. The red, orange, yellow and green segments of the bar indicate the fraction of residues that contain outliers for ≥ 3 , 2, 1 and 0 types of geometric quality criteria respectively. A grey segment represents the fraction of residues that are not modelled. The numeric value for each fraction is indicated below the corresponding segment, with a dot representing fractions $\leq 5\%$.

Mol	Chain	Length	Quality of chain
1	A	847	64% 28% 8%
1	C	847	65% 27% 7%
2	B	842	60% 30% 9%
2	D	842	60% 31% 9%

2 Entry composition [i](#)

There are 5 unique types of molecules in this entry. The entry contains 23474 atoms, of which 28 are hydrogens and 0 are deuteriums.

In the tables below, the AltConf column contains the number of residues with at least one atom in alternate conformation and the Trace column contains the number of residues modelled with at most 2 atoms.

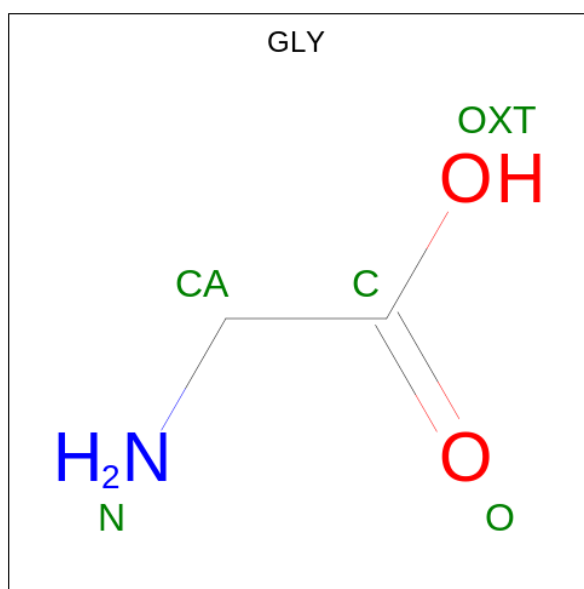
- Molecule 1 is a protein called Glutamate receptor ionotropic, NMDA 1.

Mol	Chain	Residues	Atoms					AltConf	Trace
1	A	781	Total	C	N	O	S	0	0
			5851	3735	1024	1062	30		
1	C	786	Total	C	N	O	S	0	0
			5894	3767	1027	1070	30		

- Molecule 2 is a protein called Glutamate receptor ionotropic, NMDA 2B.

Mol	Chain	Residues	Atoms					AltConf	Trace
2	B	768	Total	C	N	O	S	0	0
			5783	3719	946	1080	38		
2	D	768	Total	C	N	O	S	0	0
			5764	3708	942	1077	37		

- Molecule 3 is GLYCINE (CCD ID: GLY) (formula: C₂H₅NO₂).



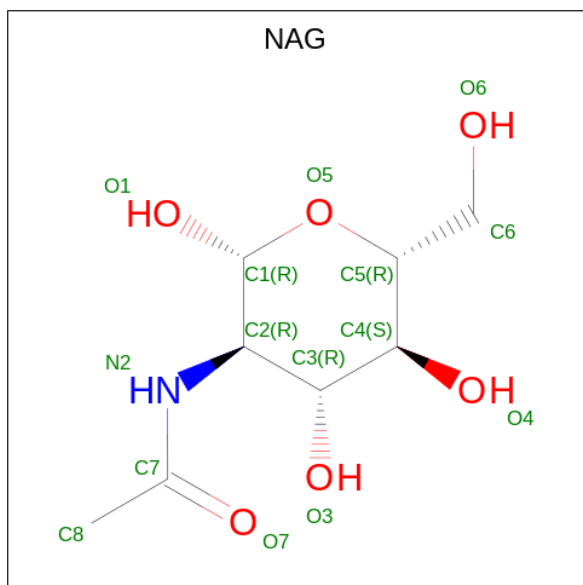
Mol	Chain	Residues	Atoms				AltConf
3	A	1	Total	C	N	O	0
			5	2	1	2	

Continued on next page...

Continued from previous page...

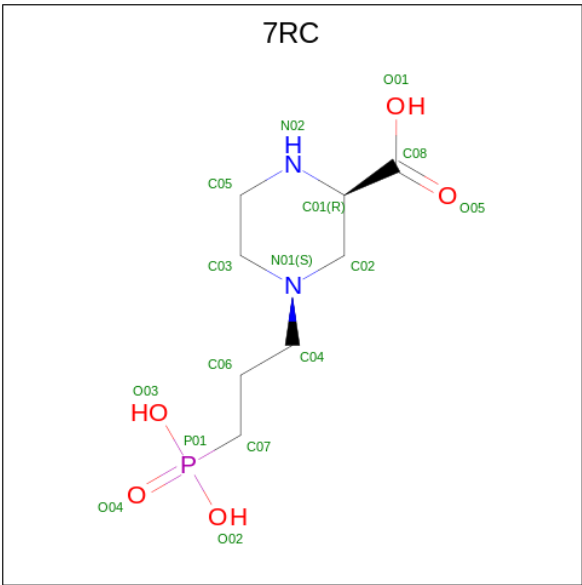
Mol	Chain	Residues	Atoms				AltConf
			Total	C	N	O	
3	C	1	5	2	1	2	0

- Molecule 4 is 2-acetamido-2-deoxy-beta-D-glucopyranose (CCD ID: NAG) (formula: $C_8H_{15}NO_6$).



Mol	Chain	Residues	Atoms				AltConf
			Total	C	N	O	
4	A	1	14	8	1	5	0
4	A	1	14	8	1	5	0
4	A	1	14	8	1	5	0
4	C	1	14	8	1	5	0
4	C	1	14	8	1	5	0
4	C	1	14	8	1	5	0
4	C	1	14	8	1	5	0
4	C	1	14	8	1	5	0

- Molecule 5 is (2R)-4-(3-phosphonopropyl)piperazine-2-carboxylic acid (CCD ID: 7RC) (formula: $C_8H_{17}N_2O_5P$).

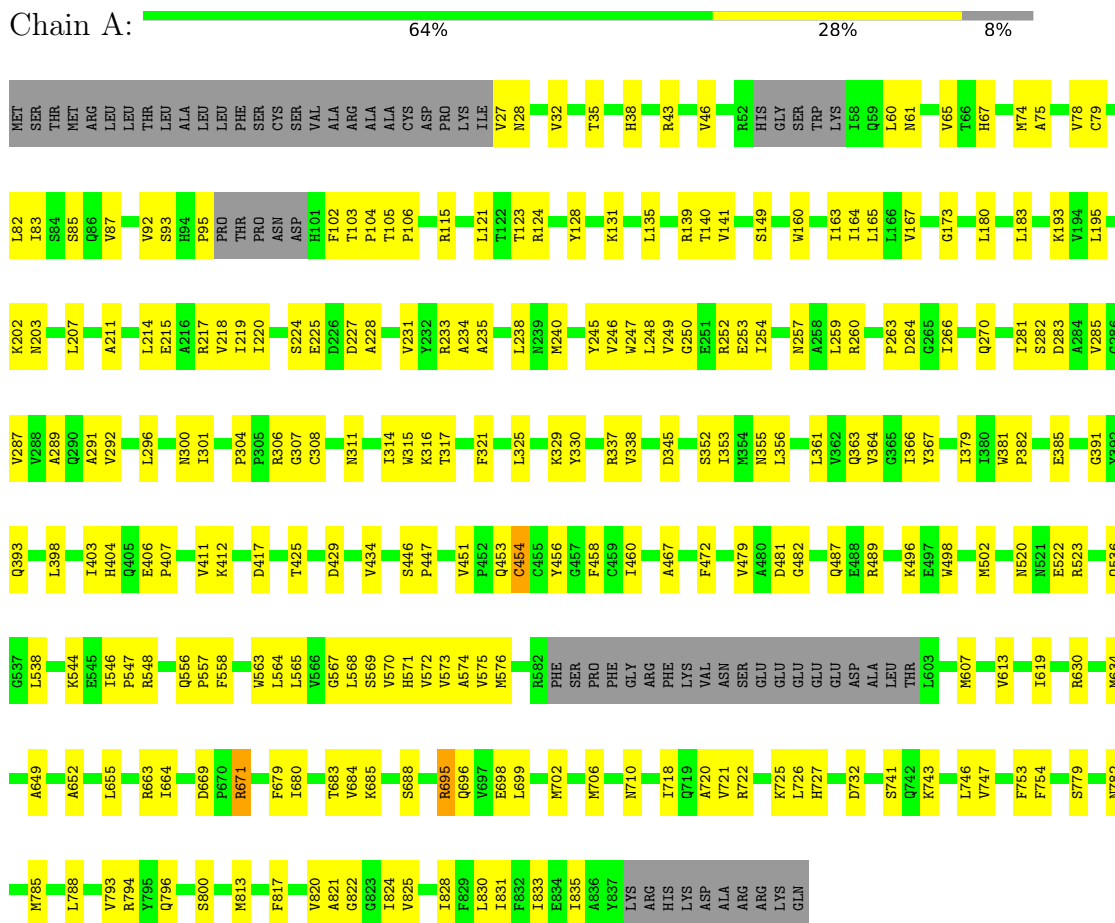


Mol	Chain	Residues	Atoms						AltConf
			Total	C	H	N	O	P	
5	B	1	30	8	14	2	5	1	0
5	D	1	30	8	14	2	5	1	0

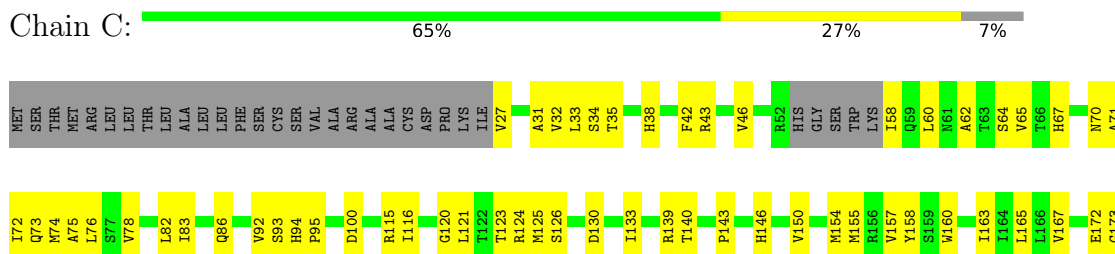
3 Residue-property plots [i](#)

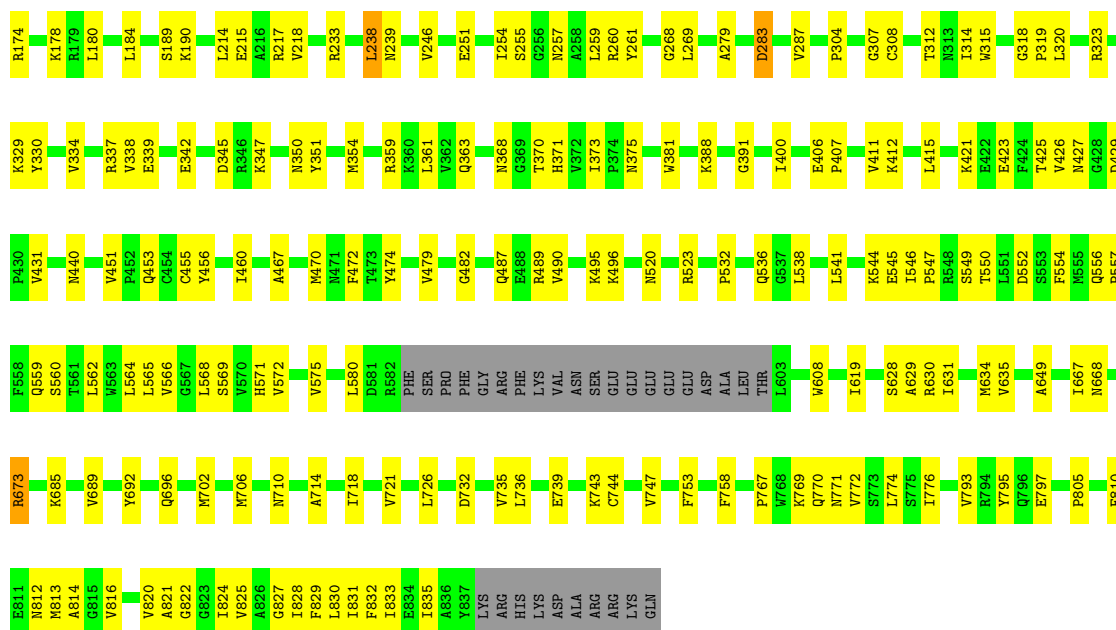
These plots are drawn for all protein, RNA, DNA and oligosaccharide chains in the entry. The first graphic for a chain summarises the proportions of the various outlier classes displayed in the second graphic. The second graphic shows the sequence view annotated by issues in geometry. Residues are color-coded according to the number of geometric quality criteria for which they contain at least one outlier: green = 0, yellow = 1, orange = 2 and red = 3 or more. Stretches of 2 or more consecutive residues without any outlier are shown as a green connector. Residues present in the sample, but not in the model, are shown in grey.

- Molecule 1: Glutamate receptor ionotropic, NMDA 1



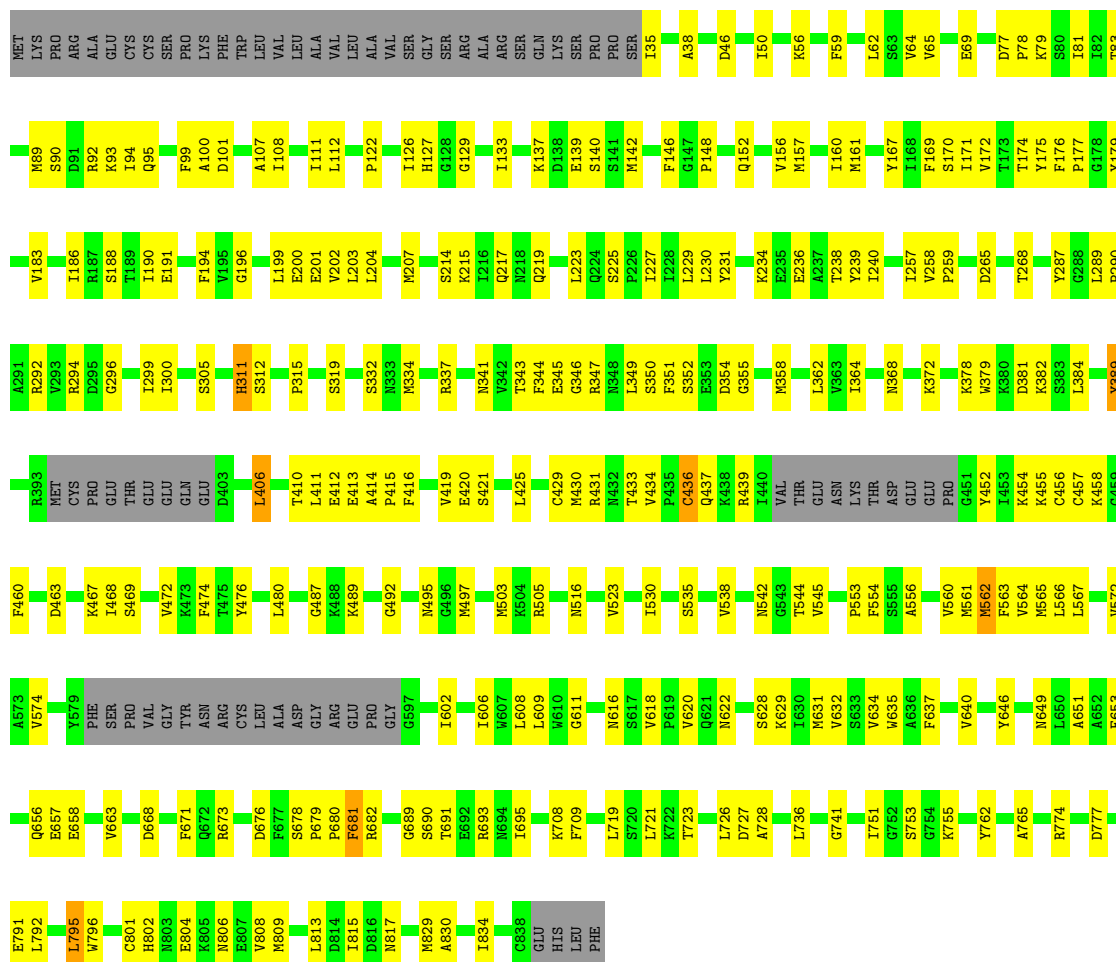
- Molecule 1: Glutamate receptor ionotropic, NMDA 1





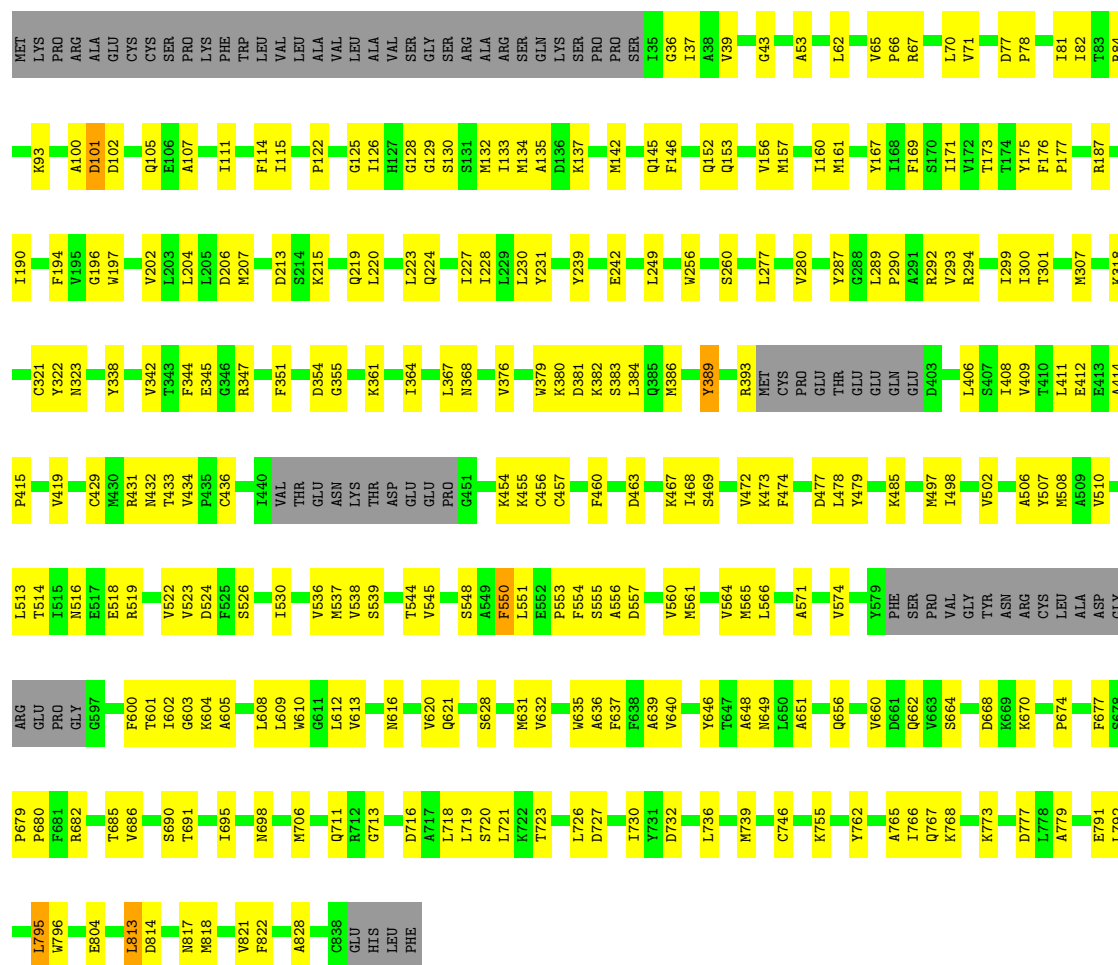
• Molecule 2: Glutamate receptor ionotropic, NMDA 2B

Chain B: 60% 30% 9%



● Molecule 2: Glutamate receptor ionotropic, NMDA 2B

Chain D:  60% 31% 9%



4 Experimental information

Property	Value	Source
EM reconstruction method	SINGLE PARTICLE	Depositor
Imposed symmetry	POINT, Not provided	
Number of particles used	229948	Depositor
Resolution determination method	FSC 0.143 CUT-OFF	Depositor
CTF correction method	NONE	Depositor
Microscope	TFS KRIOS	Depositor
Voltage (kV)	300	Depositor
Electron dose ($e^-/\text{\AA}^2$)	53	Depositor
Minimum defocus (nm)	1000	Depositor
Maximum defocus (nm)	1600	Depositor
Magnification	Not provided	
Image detector	FEI FALCON IV (4k x 4k)	Depositor

5 Model quality [i](#)

5.1 Standard geometry [i](#)

Bond lengths and bond angles in the following residue types are not validated in this section: 7RC, NAG

The Z score for a bond length (or angle) is the number of standard deviations the observed value is removed from the expected value. A bond length (or angle) with $|Z| > 5$ is considered an outlier worth inspection. RMSZ is the root-mean-square of all Z scores of the bond lengths (or angles).

Mol	Chain	Bond lengths		Bond angles	
		RMSZ	$\# Z > 5$	RMSZ	$\# Z > 5$
1	A	0.24	0/5976	0.44	0/8127
1	C	0.24	0/6023	0.44	0/8200
2	B	0.24	0/5903	0.42	0/8023
2	D	0.24	0/5883	0.43	0/7999
All	All	0.24	0/23785	0.43	0/32349

There are no bond length outliers.

There are no bond angle outliers.

There are no chirality outliers.

There are no planarity outliers.

5.2 Too-close contacts [i](#)

In the following table, the Non-H and H(model) columns list the number of non-hydrogen atoms and hydrogen atoms in the chain respectively. The H(added) column lists the number of hydrogen atoms added and optimized by MolProbity. The Clashes column lists the number of clashes within the asymmetric unit, whereas Symm-Clashes lists symmetry-related clashes.

Mol	Chain	Non-H	H(model)	H(added)	Clashes	Symm-Clashes
1	A	5851	0	5589	212	0
1	C	5894	0	5663	194	0
2	B	5783	0	5575	218	0
2	D	5764	0	5534	232	0
3	A	5	0	2	1	0
3	C	5	0	2	0	0
4	A	42	0	39	4	0
4	C	70	0	65	2	0
5	B	16	14	0	5	0

Continued on next page...

Continued from previous page...

Mol	Chain	Non-H	H(model)	H(added)	Clashes	Symm-Clashes
5	D	16	14	0	3	0
All	All	23446	28	22469	810	0

The all-atom clashscore is defined as the number of clashes found per 1000 atoms (including hydrogen atoms). The all-atom clashscore for this structure is 18.

All (810) close contacts within the same asymmetric unit are listed below, sorted by their clash magnitude.

Atom-1	Atom-2	Interatomic distance (Å)	Clash overlap (Å)
2:D:553:PRO:HA	2:D:649:ASN:HD22	1.26	1.01
2:D:537:MET:CE	2:D:718:LEU:HD21	1.92	1.00
2:D:537:MET:HE1	2:D:718:LEU:HD21	1.50	0.93
1:C:83:ILE:HA	1:C:307:GLY:HA2	1.54	0.89
2:D:436:CYS:HB2	2:D:457:CYS:H	1.38	0.89
2:D:414:ALA:HB3	2:D:415:PRO:HD3	1.53	0.88
2:D:544:THR:HB	2:D:656:GLN:OE1	1.73	0.87
1:A:569:SER:O	1:A:573:VAL:HG23	1.75	0.85
1:A:281:ILE:O	1:A:285:VAL:HG13	1.78	0.83
1:A:124:ARG:HA	1:A:139:ARG:HH12	1.42	0.82
2:D:537:MET:CE	2:D:718:LEU:CD2	2.57	0.82
2:D:537:MET:HE3	2:D:718:LEU:CD2	2.09	0.82
2:B:414:ALA:HB3	2:B:415:PRO:HD3	1.62	0.81
1:A:203:ASN:HB3	4:A:904:NAG:HN2	1.45	0.80
1:A:458:PHE:CE1	1:A:788:LEU:HD13	2.16	0.80
2:B:436:CYS:HB2	2:B:457:CYS:H	1.47	0.79
1:C:27:VAL:HG21	1:C:58:ILE:HD13	1.65	0.79
2:B:553:PRO:HB3	2:B:649:ASN:HB3	1.63	0.79
2:B:92:ARG:HG2	2:B:94:ILE:HG23	1.66	0.77
1:A:458:PHE:CD1	1:A:788:LEU:HD13	2.19	0.77
2:B:38:ALA:HB2	2:B:94:ILE:HD12	1.66	0.77
2:B:663:VAL:H	2:B:751:ILE:HD11	1.49	0.77
1:C:165:LEU:HD11	1:C:180:LEU:HD23	1.67	0.76
1:A:831:ILE:O	1:A:835:ILE:HG22	1.85	0.76
1:A:793:VAL:HG12	1:A:794:ARG:H	1.51	0.75
1:C:260:ARG:O	1:C:359:ARG:NH2	2.20	0.75
2:D:215:LYS:O	2:D:219:GLN:HG2	1.86	0.75
1:A:381:TRP:HB3	1:A:382:PRO:HD2	1.66	0.75
2:B:186:ILE:O	2:B:190:ILE:HG23	1.86	0.75
1:A:458:PHE:CE1	1:A:788:LEU:HB3	2.22	0.75
2:B:678:SER:OG	2:B:679:PRO:HD2	1.87	0.75
1:C:257:ASN:HA	1:C:260:ARG:HD3	1.70	0.74

Continued on next page...

Continued from previous page...

Atom-1	Atom-2	Interatomic distance (Å)	Clash overlap (Å)
1:C:46:VAL:HG11	1:C:62:ALA:HB2	1.68	0.74
1:C:257:ASN:HA	1:C:260:ARG:HH11	1.51	0.74
2:B:334:MET:HA	2:B:337:ARG:HE	1.51	0.74
1:C:58:ILE:HG23	1:C:60:LEU:H	1.52	0.74
2:D:161:MET:HE3	2:D:169:PHE:HB3	1.70	0.74
2:D:406:LEU:HD12	2:D:507:TYR:HB3	1.68	0.74
1:C:635:VAL:HG21	2:D:828:ALA:HB1	1.70	0.73
1:A:306:ARG:H	1:A:311:ASN:HD21	1.36	0.73
1:C:520:ASN:OD1	1:C:523:ARG:HG2	1.89	0.73
2:D:556:ALA:O	2:D:560:VAL:HG23	1.89	0.73
1:C:630:ARG:O	1:C:634:MET:HG3	1.90	0.72
2:D:39:VAL:HB	2:D:70:LEU:HD23	1.70	0.72
2:D:545:VAL:HA	2:D:817:ASN:OD1	1.90	0.72
2:D:813:LEU:HD23	2:D:817:ASN:HB2	1.70	0.71
2:D:553:PRO:HA	2:D:649:ASN:ND2	2.05	0.71
1:C:124:ARG:HA	1:C:139:ARG:HH12	1.55	0.70
2:D:690:SER:N	5:D:901:7RC:O04	2.23	0.70
2:D:792:LEU:HA	2:D:795:LEU:CD2	2.22	0.70
2:B:410:THR:HG22	2:B:411:LEU:H	1.56	0.70
1:A:458:PHE:CD1	1:A:788:LEU:HB3	2.27	0.70
2:B:560:VAL:O	2:B:564:VAL:HG13	1.91	0.70
2:D:613:VAL:HA	2:D:639:ALA:HB1	1.74	0.69
1:A:314:ILE:HG22	1:A:316:LYS:H	1.55	0.69
2:B:411:LEU:HB2	2:B:497:MET:CE	2.22	0.69
2:B:46:ASP:O	2:B:50:ILE:HG12	1.93	0.69
1:C:549:SER:OG	1:C:812:ASN:ND2	2.24	0.69
2:B:530:ILE:HG22	2:B:762:TYR:HB2	1.73	0.69
1:A:828:ILE:O	1:A:831:ILE:HG22	1.92	0.69
1:C:93:SER:HB2	1:C:121:LEU:HD12	1.73	0.69
2:D:66:PRO:HG3	2:D:301:THR:HG21	1.75	0.69
2:D:695:ILE:HG21	2:D:706:MET:HE1	1.75	0.69
1:C:217:ARG:HB2	1:C:391:GLY:HA2	1.74	0.69
2:B:538:VAL:HG23	2:B:727:ASP:O	1.94	0.68
1:A:291:ALA:HB1	1:A:325:LEU:HD12	1.75	0.68
1:A:546:ILE:HD12	1:A:547:PRO:HD2	1.75	0.68
2:D:637:PHE:O	2:D:640:VAL:HG12	1.92	0.68
2:D:553:PRO:HB3	2:D:649:ASN:HB3	1.74	0.68
1:A:564:LEU:O	1:A:568:LEU:HG	1.94	0.68
1:A:79:CYS:O	1:A:82:LEU:HG	1.94	0.68
2:B:681:PHE:O	2:B:727:ASP:HB2	1.94	0.68
1:A:35:THR:HG23	1:A:38:HIS:H	1.58	0.67

Continued on next page...

Continued from previous page...

Atom-1	Atom-2	Interatomic distance (Å)	Clash overlap (Å)
1:A:235:ALA:O	1:A:240:MET:HB2	1.93	0.67
2:B:419:VAL:HG13	2:B:455:LYS:HB3	1.76	0.67
2:D:670:LYS:HA	2:D:677:PHE:CE1	2.29	0.67
2:B:572:VAL:HG11	1:C:824:ILE:HD11	1.77	0.67
1:A:264:ASP:HA	1:A:356:LEU:HD22	1.77	0.67
1:A:782:ASN:O	2:D:698:ASN:ND2	2.27	0.67
1:C:562:LEU:HD21	2:D:818:MET:HG3	1.76	0.66
1:C:568:LEU:O	1:C:572:VAL:HG13	1.94	0.66
2:D:36:GLY:HA2	2:D:67:ARG:HG2	1.76	0.66
1:A:821:ALA:O	1:A:824:ILE:HG22	1.94	0.66
1:A:105:THR:OG1	1:A:106:PRO:HD3	1.95	0.66
2:B:160:ILE:HD11	2:B:364:ILE:HG12	1.76	0.66
2:D:537:MET:HE3	2:D:718:LEU:HD22	1.76	0.66
1:A:79:CYS:HA	1:A:82:LEU:CD2	2.26	0.66
1:A:821:ALA:O	1:A:825:VAL:HG13	1.95	0.66
2:B:567:LEU:HD23	2:B:606:ILE:HD11	1.78	0.66
2:B:77:ASP:OD1	2:B:78:PRO:HD2	1.95	0.66
2:B:411:LEU:HB2	2:B:497:MET:HE2	1.78	0.66
1:A:164:ILE:HD11	1:A:219:ILE:HD12	1.78	0.66
1:C:71:ALA:HB1	2:D:114:PHE:HZ	1.61	0.66
1:C:139:ARG:HB2	1:C:345:ASP:HA	1.78	0.65
2:D:463:ASP:O	2:D:467:LYS:HG3	1.96	0.65
1:A:822:GLY:O	1:A:825:VAL:HG22	1.97	0.65
1:C:544:LYS:HE2	1:C:744:CYS:O	1.95	0.65
2:D:419:VAL:HG22	2:D:457:CYS:SG	2.37	0.65
1:A:489:ARG:NH2	2:B:425:LEU:O	2.30	0.65
2:D:530:ILE:HG22	2:D:762:TYR:HB2	1.79	0.65
2:D:719:LEU:O	2:D:723:THR:HG23	1.96	0.65
1:C:821:ALA:O	1:C:825:VAL:HG13	1.97	0.64
1:C:560:SER:O	1:C:564:LEU:HD22	1.98	0.64
2:B:808:VAL:HG23	2:B:809:MET:H	1.63	0.64
1:C:825:VAL:O	1:C:828:ILE:HG22	1.97	0.64
1:A:558:PHE:HE1	2:B:813:LEU:HD12	1.62	0.64
2:B:545:VAL:HG22	2:B:817:ASN:HD22	1.62	0.64
1:A:257:ASN:HB2	1:A:260:ARG:HH21	1.62	0.64
1:C:124:ARG:NH1	1:C:251:GLU:OE1	2.28	0.64
1:C:829:PHE:O	1:C:833:ILE:HG23	1.98	0.64
1:C:43:ARG:O	1:C:46:VAL:HG12	1.98	0.64
1:C:552:ASP:HB2	1:C:556:GLN:OE1	1.98	0.64
1:C:821:ALA:O	1:C:824:ILE:HG22	1.97	0.64
1:C:42:PHE:CE2	1:C:62:ALA:HB1	2.33	0.63

Continued on next page...

Continued from previous page...

Atom-1	Atom-2	Interatomic distance (Å)	Clash overlap (Å)
1:C:827:GLY:O	1:C:831:ILE:HG22	1.98	0.63
2:D:555:SER:OG	2:D:557:ASP:OD1	2.07	0.63
1:C:82:LEU:HD11	1:C:116:ILE:CD1	2.29	0.63
1:A:263:PRO:HD2	1:A:266:ILE:HD11	1.81	0.63
2:B:188:SER:HA	2:B:191:GLU:OE2	1.98	0.63
1:A:451:VAL:HG23	1:A:453:GLN:HE21	1.63	0.63
1:C:35:THR:HG23	1:C:38:HIS:H	1.63	0.63
2:B:234:LYS:O	2:B:238:THR:HG23	1.99	0.62
1:A:27:VAL:HG22	1:A:60:LEU:HD22	1.82	0.62
2:D:93:LYS:NZ	2:D:318:LYS:HA	2.14	0.62
1:A:489:ARG:HH21	2:B:194:PHE:HD1	1.48	0.62
1:A:43:ARG:O	1:A:46:VAL:HG12	1.99	0.62
1:C:580:LEU:HD21	1:C:628:SER:HB3	1.80	0.62
1:A:214:LEU:O	1:A:215:GLU:HG2	2.00	0.62
1:A:522:GLU:OE2	1:A:695:ARG:NH1	2.32	0.62
2:B:554:PHE:HE2	2:B:646:TYR:HB2	1.63	0.62
2:D:344:PHE:O	2:D:347:ARG:HG3	2.00	0.62
2:B:175:TYR:CE2	2:B:204:LEU:HD12	2.34	0.62
1:A:282:SER:O	1:A:285:VAL:HG22	1.99	0.61
1:A:283:ASP:O	1:A:287:VAL:HG23	1.99	0.61
2:B:663:VAL:HB	2:B:668:ASP:OD2	1.99	0.61
1:C:342:GLU:HA	1:C:342:GLU:OE1	2.00	0.61
1:A:718:ILE:O	1:A:721:VAL:HG12	2.00	0.61
1:C:721:VAL:HG23	1:C:726:LEU:HD23	1.81	0.61
2:D:434:VAL:O	2:D:456:CYS:HA	1.99	0.61
1:A:458:PHE:CE1	1:A:788:LEU:CD1	2.83	0.61
1:A:696:GLN:HG3	1:A:699:LEU:HD12	1.81	0.61
2:D:380:LYS:HB2	2:D:383:SER:OG	2.01	0.61
2:B:434:VAL:O	2:B:456:CYS:HA	2.00	0.61
2:B:553:PRO:HA	2:B:649:ASN:ND2	2.14	0.61
2:B:69:GLU:N	2:B:69:GLU:OE1	2.33	0.61
1:A:824:ILE:HA	2:D:631:MET:HE1	1.81	0.61
2:D:321:CYS:SG	2:D:322:TYR:N	2.72	0.61
1:C:123:THR:O	1:C:139:ARG:NH1	2.34	0.61
2:D:176:PHE:CD1	2:D:177:PRO:HD2	2.36	0.61
1:A:520:ASN:OD1	1:A:523:ARG:HG2	2.01	0.60
1:A:630:ARG:O	1:A:634:MET:HG3	2.00	0.60
1:A:669:ASP:OD2	1:A:671:ARG:NE	2.32	0.60
2:D:660:VAL:HG12	2:D:662:GLN:H	1.66	0.60
1:A:568:LEU:O	1:A:572:VAL:HG23	2.01	0.60
2:B:689:GLY:HA3	5:B:901:7RC:O03	2.01	0.60

Continued on next page...

Continued from previous page...

Atom-1	Atom-2	Interatomic distance (Å)	Clash overlap (Å)
2:D:411:LEU:HD22	2:D:485:LYS:O	2.02	0.60
1:C:155:MET:CE	1:C:163:ILE:HD13	2.31	0.60
2:D:526:SER:HB2	2:D:777:ASP:OD1	2.02	0.60
2:B:809:MET:HG3	2:B:809:MET:O	2.00	0.60
2:D:66:PRO:HG3	2:D:301:THR:CG2	2.31	0.60
1:A:817:PHE:O	1:A:820:VAL:HG12	2.02	0.60
1:C:423:GLU:HB2	1:C:431:VAL:HG21	1.83	0.60
2:B:368:ASN:N	2:B:372:LYS:O	2.25	0.60
1:C:373:ILE:HD11	4:C:904:NAG:H61	1.82	0.60
2:D:132:MET:O	2:D:145:GLN:NE2	2.34	0.60
2:D:600:PHE:CE2	2:D:605:ALA:HB2	2.37	0.60
1:A:824:ILE:HA	2:D:631:MET:CE	2.32	0.59
2:B:565:MET:CE	1:C:820:VAL:HB	2.33	0.59
2:B:608:LEU:HA	2:B:620:VAL:HG11	1.84	0.59
1:C:832:PHE:O	1:C:835:ILE:HG22	2.02	0.59
2:D:37:ILE:HG12	2:D:300:ILE:HG21	1.83	0.59
2:D:553:PRO:CA	2:D:649:ASN:HD22	2.07	0.59
1:A:103:THR:O	1:A:106:PRO:HD2	2.02	0.59
1:A:571:HIS:O	1:A:575:VAL:HG22	2.03	0.59
2:B:352:SER:HB2	2:B:358:MET:SD	2.42	0.59
1:A:289:ALA:O	1:A:292:VAL:HG12	2.02	0.59
2:B:631:MET:O	2:B:634:VAL:HG12	2.02	0.59
2:B:791:GLU:O	2:B:795:LEU:HD23	2.02	0.59
1:A:544:LYS:NZ	1:A:800:SER:OG	2.36	0.59
2:B:411:LEU:HG	2:B:412:GLU:H	1.67	0.59
1:C:550:THR:HG23	1:C:550:THR:O	2.00	0.59
1:C:635:VAL:HG11	2:D:828:ALA:CB	2.33	0.59
1:C:822:GLY:O	1:C:825:VAL:HG22	2.02	0.59
2:B:463:ASP:O	2:B:467:LYS:HG3	2.03	0.58
2:B:542:ASN:HA	2:B:658:GLU:HG2	1.84	0.58
1:C:363:GLN:O	1:C:375:ASN:ND2	2.32	0.58
1:A:85:SER:HB2	1:A:87:VAL:HG13	1.85	0.58
1:A:669:ASP:OD2	1:A:671:ARG:HB2	2.03	0.58
2:B:553:PRO:HA	2:B:649:ASN:HD22	1.67	0.58
2:B:553:PRO:CA	2:B:649:ASN:HD22	2.16	0.58
1:A:250:GLY:N	1:A:253:GLU:OE1	2.34	0.58
2:B:469:SER:HA	2:B:474:PHE:CE1	2.38	0.58
2:D:469:SER:HA	2:D:474:PHE:CE1	2.38	0.58
2:B:156:VAL:HG21	2:B:362:LEU:HD12	1.84	0.58
1:A:140:THR:HG23	1:A:141:VAL:HG13	1.86	0.58
1:C:412:LYS:O	1:C:453:GLN:HB3	2.04	0.58

Continued on next page...

Continued from previous page...

Atom-1	Atom-2	Interatomic distance (Å)	Clash overlap (Å)
1:C:75:ALA:O	1:C:78:VAL:HG12	2.04	0.58
2:D:538:VAL:HG13	2:D:727:ASP:O	2.03	0.58
2:D:695:ILE:HG21	2:D:706:MET:CE	2.34	0.58
2:B:77:ASP:O	2:B:81:ILE:HG13	2.04	0.57
2:B:215:LYS:O	2:B:219:GLN:HG2	2.05	0.57
2:D:77:ASP:O	2:D:81:ILE:HG13	2.04	0.57
1:A:663:ARG:HH11	1:A:747:VAL:HG21	1.68	0.57
2:B:523:VAL:HG11	2:B:765:ALA:HB1	1.85	0.57
1:C:32:VAL:HG11	1:C:74:MET:HE2	1.86	0.57
1:C:569:SER:O	1:C:572:VAL:HG22	2.03	0.57
1:A:264:ASP:HA	1:A:356:LEU:CD2	2.34	0.57
2:B:609:LEU:HD22	2:B:635:TRP:CD1	2.39	0.57
2:B:719:LEU:O	2:B:723:THR:HG23	2.03	0.57
1:C:795:TYR:HB3	1:C:797:GLU:OE1	2.05	0.57
2:B:556:ALA:O	2:B:560:VAL:HG22	2.03	0.57
1:C:83:ILE:CA	1:C:307:GLY:HA2	2.32	0.57
1:C:400:ILE:HD13	1:C:474:TYR:HB2	1.84	0.57
1:A:451:VAL:HG23	1:A:453:GLN:NE2	2.20	0.57
2:B:93:LYS:HD3	2:B:319:SER:OG	2.05	0.57
1:C:425:THR:HG22	1:C:429:ASP:O	2.04	0.57
1:C:214:LEU:O	1:C:215:GLU:HG2	2.05	0.57
2:B:608:LEU:HA	2:B:620:VAL:CG1	2.35	0.57
2:D:137:LYS:HD2	2:D:354:ASP:O	2.04	0.57
1:A:67:HIS:HA	1:A:74:MET:HE3	1.86	0.57
2:B:312:SER:O	2:B:315:PRO:HD3	2.05	0.57
2:B:561:MET:O	2:B:564:VAL:HG22	2.04	0.57
2:D:608:LEU:HD13	2:D:620:VAL:HG21	1.87	0.57
1:A:203:ASN:CB	4:A:904:NAG:HN2	2.15	0.56
1:A:228:ALA:O	1:A:231:VAL:HG12	2.05	0.56
1:C:541:LEU:HB2	1:C:736:LEU:HD13	1.87	0.56
2:D:679:PRO:N	2:D:680:PRO:HD2	2.21	0.56
1:A:481:ASP:OD1	1:A:481:ASP:N	2.35	0.56
1:A:496:LYS:NZ	2:B:191:GLU:O	2.38	0.56
2:B:572:VAL:HG21	1:C:824:ILE:HD11	1.86	0.56
2:B:628:SER:O	2:B:632:VAL:HG23	2.04	0.56
1:C:70:ASN:HB3	1:C:73:GLN:HG3	1.87	0.56
1:C:86:GLN:CB	1:C:304:PRO:HG2	2.36	0.56
1:C:536:GLN:OE1	1:C:732:ASP:HB3	2.06	0.56
1:A:664:ILE:HD11	1:A:679:PHE:CZ	2.41	0.56
1:A:467:ALA:HA	1:A:472:PHE:CE1	2.40	0.56
1:A:702:MET:O	1:A:706:MET:HG3	2.05	0.56

Continued on next page...

Continued from previous page...

Atom-1	Atom-2	Interatomic distance (Å)	Clash overlap (Å)
2:B:100:ALA:HA	2:B:127:HIS:O	2.06	0.56
1:A:193:LYS:CG	1:A:195:LEU:HD23	2.35	0.56
1:C:70:ASN:HB3	1:C:73:GLN:CG	2.36	0.56
2:B:544:THR:HB	2:B:817:ASN:HD21	1.70	0.56
1:A:619:ILE:HD11	2:D:632:VAL:HG11	1.88	0.56
2:D:101:ASP:OD2	2:D:129:GLY:N	2.39	0.56
2:D:711:GLN:HE22	2:D:720:SER:CB	2.19	0.56
2:D:167:TYR:HB3	2:D:196:GLY:O	2.06	0.56
2:B:108:ILE:O	2:B:112:LEU:HG	2.06	0.56
2:B:830:ALA:O	2:B:834:ILE:HG12	2.06	0.56
2:D:126:ILE:HG21	2:D:292:ARG:HB3	1.88	0.56
1:A:722:ARG:CZ	1:A:743:LYS:HD2	2.37	0.55
2:D:612:LEU:HD21	2:D:636:ALA:HB2	1.86	0.55
1:A:329:LYS:HE3	1:A:337:ARG:NH2	2.21	0.55
1:A:574:ALA:HB3	1:A:607:MET:HE1	1.87	0.55
2:D:175:TYR:HD2	2:D:206:ASP:HA	1.70	0.55
1:A:446:SER:HB3	1:A:447:PRO:HD3	1.88	0.55
1:A:830:LEU:O	1:A:830:LEU:HD23	2.06	0.55
2:B:419:VAL:HG11	2:B:455:LYS:HE3	1.88	0.55
2:B:122:PRO:HA	2:B:142:MET:O	2.07	0.55
1:C:154:MET:HA	1:C:157:VAL:HG22	1.89	0.55
1:C:562:LEU:HD13	2:D:814:ASP:O	2.07	0.55
1:C:830:LEU:O	1:C:833:ILE:HG12	2.06	0.55
2:D:126:ILE:HG22	2:D:292:ARG:HD3	1.88	0.55
2:D:381:ASP:O	2:D:382:LYS:HD3	2.05	0.55
2:D:668:ASP:OD2	2:D:670:LYS:HB2	2.07	0.55
1:C:308:CYS:SG	2:D:78:PRO:HD2	2.46	0.55
1:A:458:PHE:HE1	1:A:788:LEU:HB3	1.72	0.55
1:C:155:MET:HE1	1:C:163:ILE:HD13	1.89	0.55
1:A:425:THR:HG22	1:A:429:ASP:H	1.72	0.55
2:D:160:ILE:HD11	2:D:364:ILE:HG12	1.88	0.55
2:D:223:LEU:HD12	2:D:249:LEU:CD1	2.36	0.55
2:B:430:MET:HG2	2:B:431:ARG:H	1.72	0.55
1:C:71:ALA:HB1	2:D:114:PHE:CZ	2.42	0.55
2:D:691:THR:OG1	5:D:901:7RC:O03	2.17	0.54
2:B:741:GLY:HA3	2:B:802:HIS:CE1	2.41	0.54
2:D:228:ILE:HG21	2:D:256:TRP:CZ3	2.41	0.54
2:D:433:THR:CG2	2:D:456:CYS:HB3	2.36	0.54
1:A:619:ILE:HD11	2:D:632:VAL:CG1	2.37	0.54
1:C:668:ASN:HA	1:C:673:ARG:NH1	2.22	0.54
1:A:571:HIS:HA	1:A:607:MET:HE1	1.89	0.54

Continued on next page...

Continued from previous page...

Atom-1	Atom-2	Interatomic distance (Å)	Clash overlap (Å)
1:A:79:CYS:HA	1:A:82:LEU:HD21	1.88	0.54
1:A:139:ARG:HD2	1:A:345:ASP:OD1	2.08	0.54
1:A:254:ILE:O	1:A:259:LEU:HD11	2.07	0.54
1:A:721:VAL:HG23	1:A:726:LEU:O	2.07	0.54
2:D:497:MET:HE2	2:D:513:LEU:HD13	1.89	0.54
2:D:792:LEU:O	2:D:795:LEU:HD23	2.07	0.54
2:D:814:ASP:OD1	2:D:814:ASP:N	2.38	0.54
2:B:137:LYS:NZ	2:B:355:GLY:HA3	2.23	0.54
1:A:649:ALA:HB1	2:B:651:ALA:HA	1.88	0.54
1:C:259:LEU:C	1:C:259:LEU:HD23	2.27	0.54
1:A:536:GLN:OE1	1:A:732:ASP:HB3	2.07	0.54
1:C:631:ILE:O	1:C:635:VAL:HG23	2.07	0.54
2:D:550:PHE:CD2	2:D:551:LEU:HD23	2.43	0.54
2:B:62:LEU:O	2:B:305:SER:HB2	2.08	0.54
1:C:635:VAL:HG11	2:D:828:ALA:HB3	1.89	0.54
1:A:406:GLU:HB3	1:A:407:PRO:HD3	1.90	0.54
2:B:341:ASN:HA	2:B:350:SER:HB3	1.90	0.54
1:C:124:ARG:HA	1:C:139:ARG:NH1	2.22	0.54
2:D:53:ALA:HB1	2:D:294:ARG:HD2	1.90	0.54
1:A:193:LYS:HG3	1:A:195:LEU:HD23	1.90	0.53
2:B:420:GLU:HG3	2:B:458:LYS:HD3	1.90	0.53
2:D:713:GLY:HA3	2:D:716:ASP:OD2	2.08	0.53
2:D:766:ILE:HD12	2:D:773:LYS:HB2	1.90	0.53
1:A:83:ILE:CB	1:A:307:GLY:HA3	2.38	0.53
1:A:538:LEU:HB2	1:A:753:PHE:O	2.08	0.53
2:B:574:VAL:HG21	2:B:602:ILE:HA	1.89	0.53
2:D:93:LYS:HZ3	2:D:318:LYS:HA	1.74	0.53
2:B:157:MET:HG2	2:B:257:ILE:HG21	1.90	0.53
1:C:479:VAL:HG13	1:C:482:GLY:HA2	1.91	0.53
1:C:329:LYS:HB3	1:C:337:ARG:HH21	1.73	0.53
1:C:546:ILE:HG13	1:C:547:PRO:HD2	1.90	0.53
1:A:115:ARG:NH1	1:A:135:LEU:HD22	2.24	0.53
1:A:779:SER:HB2	1:A:785:MET:HE1	1.91	0.53
2:B:176:PHE:CD1	2:B:177:PRO:HD2	2.44	0.53
2:B:190:ILE:CD1	2:B:199:LEU:HD23	2.39	0.53
2:B:190:ILE:HD13	2:B:199:LEU:HD22	1.89	0.53
2:D:408:ILE:HB	2:D:478:LEU:HD12	1.90	0.53
1:C:283:ASP:O	1:C:287:VAL:HG22	2.08	0.53
2:D:739:MET:HE3	2:D:739:MET:HA	1.91	0.53
2:B:530:ILE:CG2	2:B:762:TYR:HB2	2.37	0.53
2:B:545:VAL:HG22	2:B:817:ASN:ND2	2.24	0.53

Continued on next page...

Continued from previous page...

Atom-1	Atom-2	Interatomic distance (Å)	Clash overlap (Å)
1:C:318:GLY:N	1:C:319:PRO:HD2	2.23	0.53
2:D:133:ILE:HD13	2:D:145:GLN:HG3	1.91	0.53
2:D:190:ILE:HD11	2:D:197:TRP:HB3	1.91	0.53
1:A:225:GLU:HG2	1:A:252:ARG:O	2.09	0.52
2:B:430:MET:HG2	2:B:431:ARG:N	2.24	0.52
2:D:561:MET:O	2:D:564:VAL:HG22	2.08	0.52
1:C:283:ASP:OD1	1:C:334:VAL:HG12	2.08	0.52
1:C:350:ASN:OD1	1:C:368:ASN:HA	2.09	0.52
2:D:161:MET:HE3	2:D:169:PHE:CB	2.38	0.52
2:D:431:ARG:O	2:D:432:ASN:OD1	2.26	0.52
2:D:560:VAL:O	2:D:564:VAL:HG13	2.09	0.52
2:D:813:LEU:HD23	2:D:817:ASN:CB	2.37	0.52
1:A:263:PRO:O	1:A:266:ILE:HD12	2.10	0.52
1:A:741:SER:HB2	1:A:796:GLN:HA	1.92	0.52
2:B:691:THR:O	2:B:695:ILE:HG12	2.08	0.52
1:C:559:GLN:CB	2:D:814:ASP:HB3	2.39	0.52
1:C:115:ARG:HG3	1:C:314:ILE:HG23	1.92	0.52
2:D:536:VAL:HG22	2:D:730:ILE:HG13	1.91	0.52
1:C:67:HIS:CE1	1:C:95:PRO:HD3	2.43	0.52
2:D:514:THR:OG1	5:D:901:7RC:N02	2.43	0.52
2:D:818:MET:O	2:D:821:VAL:HG22	2.09	0.52
1:C:233:ARG:HD3	1:C:261:TYR:CE2	2.45	0.52
1:C:407:PRO:HG2	1:C:735:VAL:HG13	1.90	0.52
1:C:489:ARG:HB2	2:D:194:PHE:HE2	1.75	0.52
2:D:107:ALA:O	2:D:111:ILE:HG13	2.10	0.52
2:D:173:THR:HG22	2:D:231:TYR:HB3	1.91	0.52
2:D:530:ILE:CG2	2:D:762:TYR:HB2	2.39	0.52
2:D:381:ASP:OD1	2:D:381:ASP:N	2.42	0.52
2:D:682:ARG:O	2:D:726:LEU:HD22	2.10	0.52
1:C:538:LEU:HB2	1:C:753:PHE:O	2.10	0.52
2:D:307:MET:HA	2:D:338:TYR:CE2	2.44	0.52
1:A:257:ASN:HB2	1:A:260:ARG:NH2	2.25	0.52
2:B:99:PHE:O	2:B:126:ILE:HG12	2.10	0.52
1:C:32:VAL:HG11	1:C:74:MET:CE	2.40	0.52
1:C:32:VAL:HA	1:C:65:VAL:O	2.10	0.52
2:D:766:ILE:HG22	2:D:767:GLN:H	1.74	0.52
2:D:454:LYS:O	2:D:455:LYS:HD2	2.10	0.52
1:C:406:GLU:HB3	1:C:407:PRO:HD3	1.93	0.51
2:D:600:PHE:HE2	2:D:605:ALA:HB2	1.74	0.51
1:C:94:HIS:HE1	1:C:100:ASP:HA	1.74	0.51
1:C:174:ARG:O	1:C:178:LYS:HG3	2.11	0.51

Continued on next page...

Continued from previous page...

Atom-1	Atom-2	Interatomic distance (Å)	Clash overlap (Å)
1:C:329:LYS:HG2	1:C:339:GLU:OE2	2.09	0.51
1:C:370:THR:HG23	1:C:371:HIS:ND1	2.25	0.51
2:D:609:LEU:HD22	2:D:635:TRP:CD1	2.45	0.51
1:A:82:LEU:HD12	1:A:307:GLY:H	1.76	0.51
1:A:164:ILE:HD11	1:A:219:ILE:CD1	2.39	0.51
2:B:172:VAL:O	2:B:230:LEU:HD12	2.10	0.51
1:A:217:ARG:HB3	1:A:245:TYR:H	1.76	0.51
2:B:389:TYR:HE2	2:B:437:GLN:HG2	1.75	0.51
2:D:548:SER:O	2:D:548:SER:OG	2.28	0.51
2:D:419:VAL:HG13	2:D:455:LYS:HB3	1.91	0.51
2:D:544:THR:CB	2:D:656:GLN:OE1	2.53	0.51
2:B:101:ASP:OD1	2:B:129:GLY:N	2.44	0.51
2:B:174:THR:HA	2:B:204:LEU:O	2.10	0.51
2:B:214:SER:HA	2:B:217:GLN:NE2	2.26	0.51
2:B:214:SER:O	2:B:217:GLN:HG2	2.11	0.51
2:B:653:PHE:HA	1:C:805:PRO:HG2	1.91	0.51
2:B:691:THR:HG22	5:B:901:7RC:O03	2.11	0.51
2:D:175:TYR:CD2	2:D:206:ASP:HA	2.46	0.51
2:D:289:LEU:O	2:D:293:VAL:HG23	2.10	0.51
2:D:307:MET:HA	2:D:338:TYR:HE2	1.75	0.51
1:A:203:ASN:N	1:A:203:ASN:OD1	2.44	0.50
2:B:554:PHE:HE1	1:C:813:MET:SD	2.34	0.50
1:C:27:VAL:CG2	1:C:58:ILE:HD13	2.39	0.50
2:B:89:MET:O	2:B:90:SER:OG	2.25	0.50
1:C:269:LEU:HD12	1:C:351:TYR:HB3	1.93	0.50
2:B:62:LEU:O	2:B:64:VAL:HG23	2.11	0.50
2:B:170:SER:HG	2:B:225:SER:HG	1.55	0.50
2:B:622:ASN:OD1	1:C:619:ILE:HD13	2.12	0.50
1:A:363:GLN:HE22	1:A:366:ILE:HG12	1.76	0.50
2:D:367:LEU:HD23	2:D:368:ASN:O	2.12	0.50
1:A:164:ILE:HG22	1:A:193:LYS:HB3	1.94	0.50
1:A:487:GLN:HG3	1:A:498:TRP:CE2	2.47	0.50
1:A:576:MET:CE	2:B:829:MET:HG2	2.41	0.50
1:A:825:VAL:HA	1:A:828:ILE:HG22	1.92	0.50
2:D:608:LEU:HD13	2:D:620:VAL:CG2	2.42	0.50
1:A:215:GLU:HB2	1:A:393:GLN:O	2.12	0.50
2:B:637:PHE:O	2:B:640:VAL:HG12	2.12	0.50
1:C:72:ILE:O	1:C:76:LEU:HG	2.12	0.50
1:C:167:VAL:HG21	1:C:173:GLY:O	2.12	0.50
1:C:423:GLU:O	1:C:431:VAL:HG22	2.12	0.50
2:D:406:LEU:HD23	2:D:406:LEU:H	1.76	0.50

Continued on next page...

Continued from previous page...

Atom-1	Atom-2	Interatomic distance (Å)	Clash overlap (Å)
1:A:304:PRO:HA	1:A:315:TRP:CD1	2.46	0.50
2:D:122:PRO:HA	2:D:142:MET:O	2.11	0.50
2:D:175:TYR:OH	2:D:204:LEU:HD13	2.12	0.50
2:D:522:VAL:HG23	2:D:523:VAL:HG13	1.92	0.50
2:D:571:ALA:O	2:D:574:VAL:HG12	2.11	0.50
1:A:546:ILE:CD1	1:A:547:PRO:HD2	2.41	0.50
2:B:343:THR:HG22	2:B:346:GLY:H	1.77	0.50
2:B:657:GLU:HG2	2:B:808:VAL:HG12	1.94	0.50
1:C:312:THR:HG22	2:D:77:ASP:OD1	2.12	0.50
1:A:234:ALA:O	1:A:238:LEU:HD13	2.12	0.49
2:B:658:GLU:HB2	2:B:806:ASN:CB	2.41	0.49
2:D:604:LYS:NZ	2:D:621:GLN:OE1	2.45	0.49
2:B:142:MET:SD	2:B:332:SER:HB3	2.52	0.49
2:B:562:MET:HE2	2:B:563:PHE:HD1	1.76	0.49
2:B:79:LYS:O	2:B:83:THR:HG23	2.11	0.49
2:B:289:LEU:N	2:B:290:PRO:HD2	2.27	0.49
2:D:664:SER:O	2:D:755:LYS:HB3	2.13	0.49
1:A:67:HIS:HA	1:A:74:MET:CE	2.42	0.49
1:A:149:SER:HA	1:A:183:LEU:CD1	2.41	0.49
2:B:741:GLY:CA	2:B:802:HIS:CE1	2.95	0.49
1:C:822:GLY:HA2	1:C:825:VAL:HG22	1.95	0.49
2:B:411:LEU:HB2	2:B:497:MET:HE1	1.94	0.49
1:A:27:VAL:HG13	1:A:60:LEU:CB	2.42	0.49
1:A:233:ARG:O	1:A:234:ALA:HB3	2.11	0.49
2:D:379:TRP:HD1	2:D:384:LEU:HD13	1.78	0.49
2:D:389:TYR:HD1	2:D:389:TYR:H	1.59	0.49
1:A:300:ASN:OD1	1:A:317:THR:HG23	2.11	0.49
2:B:200:GLU:OE2	2:B:225:SER:HB3	2.13	0.49
1:C:562:LEU:O	1:C:566:VAL:HG23	2.13	0.49
2:D:230:LEU:HD12	2:D:231:TYR:H	1.78	0.49
2:B:137:LYS:NZ	2:B:354:ASP:O	2.33	0.49
2:B:175:TYR:CZ	2:B:204:LEU:HD12	2.48	0.49
1:C:279:ALA:HB1	1:C:334:VAL:HG13	1.94	0.49
1:C:538:LEU:HD21	1:C:689:VAL:HG22	1.94	0.49
1:A:479:VAL:HG13	1:A:482:GLY:H	1.77	0.49
2:B:487:GLY:HA2	2:B:495:ASN:O	2.13	0.49
1:C:767:PRO:O	4:C:906:NAG:H82	2.12	0.48
1:A:363:GLN:NE2	1:A:366:ILE:HG12	2.28	0.48
2:B:296:GLY:O	2:B:300:ILE:HG13	2.12	0.48
2:B:381:ASP:O	2:B:382:LYS:HD2	2.14	0.48
2:D:574:VAL:HG11	2:D:602:ILE:CD1	2.42	0.48

Continued on next page...

Continued from previous page...

Atom-1	Atom-2	Interatomic distance (Å)	Clash overlap (Å)
1:A:720:ALA:O	1:A:725:LYS:HB2	2.14	0.48
1:C:163:ILE:HG22	1:C:218:VAL:HB	1.96	0.48
1:C:470:MET:CE	1:C:771:ASN:HB3	2.44	0.48
1:A:28:ASN:ND2	1:A:85:SER:O	2.46	0.48
1:A:67:HIS:ND1	1:A:95:PRO:HB3	2.28	0.48
1:A:308:CYS:HA	2:B:77:ASP:OD2	2.13	0.48
2:B:489:LYS:HG3	2:B:492:GLY:O	2.14	0.48
2:B:565:MET:HE1	1:C:820:VAL:HB	1.96	0.48
1:C:215:GLU:O	1:C:215:GLU:HG3	2.13	0.48
2:D:574:VAL:HG11	2:D:602:ILE:HD12	1.95	0.48
2:B:167:TYR:HB3	2:B:196:GLY:O	2.14	0.48
2:B:35:ILE:N	2:B:65:VAL:O	2.46	0.48
2:D:674:PRO:HA	2:D:677:PHE:CZ	2.49	0.48
1:A:398:LEU:HD13	1:A:472:PHE:CD2	2.48	0.48
2:B:176:PHE:CG	2:B:177:PRO:HD2	2.49	0.48
2:B:429:CYS:HB2	2:B:433:THR:OG1	2.14	0.48
1:A:263:PRO:CD	1:A:266:ILE:HD11	2.44	0.48
1:C:813:MET:O	1:C:813:MET:HG3	2.13	0.48
2:D:508:MET:HA	2:D:765:ALA:O	2.14	0.48
2:D:628:SER:O	2:D:632:VAL:HG23	2.14	0.48
1:A:567:GLY:O	1:A:570:VAL:HG12	2.14	0.47
2:B:231:TYR:HD1	2:B:259:PRO:HG3	1.78	0.47
2:B:751:ILE:HG13	2:B:755:LYS:HD2	1.96	0.47
1:C:254:ILE:HD13	1:C:268:GLY:HA3	1.95	0.47
1:C:255:SER:N	1:C:259:LEU:HB2	2.29	0.47
2:D:134:MET:O	2:D:134:MET:HG3	2.13	0.47
2:D:393:ARG:O	2:D:393:ARG:HG2	2.13	0.47
2:D:477:ASP:N	2:D:477:ASP:OD1	2.47	0.47
1:A:75:ALA:O	1:A:78:VAL:HG12	2.15	0.47
1:A:270:GLN:HB2	1:A:352:SER:OG	2.14	0.47
1:A:406:GLU:HA	1:A:406:GLU:OE1	2.14	0.47
2:D:289:LEU:N	2:D:290:PRO:HD2	2.29	0.47
1:C:279:ALA:O	1:C:283:ASP:OD1	2.32	0.47
1:C:569:SER:HA	1:C:572:VAL:HG22	1.96	0.47
2:D:213:ASP:N	2:D:213:ASP:OD1	2.47	0.47
2:D:344:PHE:O	2:D:345:GLU:HG2	2.15	0.47
1:A:82:LEU:HD11	1:A:307:GLY:HA2	1.96	0.47
1:A:364:VAL:HG11	1:A:379:ILE:HD11	1.96	0.47
1:C:125:MET:O	1:C:126:SER:OG	2.33	0.47
2:D:129:GLY:O	2:D:132:MET:HG3	2.14	0.47
1:A:93:SER:CB	1:A:121:LEU:HD12	2.45	0.47

Continued on next page...

Continued from previous page...

Atom-1	Atom-2	Interatomic distance (Å)	Clash overlap (Å)
2:B:160:ILE:CD1	2:B:364:ILE:HG12	2.43	0.47
2:D:129:GLY:HA2	2:D:132:MET:HG3	1.96	0.47
1:C:150:VAL:HG11	1:C:269:LEU:HG	1.97	0.47
1:C:308:CYS:SG	2:D:77:ASP:HB3	2.55	0.47
1:A:135:LEU:H	1:A:135:LEU:HD12	1.80	0.47
2:B:421:SER:HA	2:B:455:LYS:O	2.15	0.47
2:B:433:THR:HG22	2:B:458:LYS:HD2	1.97	0.47
2:B:566:LEU:HD12	2:B:635:TRP:HZ2	1.79	0.47
2:B:801:CYS:HB2	2:B:804:GLU:HG3	1.96	0.47
1:C:279:ALA:HB1	1:C:334:VAL:CG1	2.44	0.47
1:C:411:VAL:HG22	1:C:455:CYS:HB3	1.96	0.47
1:C:470:MET:HE2	1:C:771:ASN:HB3	1.97	0.47
1:C:554:PHE:O	1:C:557:PRO:HD2	2.15	0.47
2:D:125:GLY:C	2:D:126:ILE:HG13	2.34	0.47
2:D:610:TRP:O	2:D:613:VAL:HG12	2.14	0.47
1:A:355:ASN:OD1	1:A:356:LEU:N	2.47	0.47
2:B:379:TRP:HD1	2:B:384:LEU:HD13	1.80	0.47
1:A:103:THR:OG1	1:A:104:PRO:HD3	2.15	0.47
2:B:190:ILE:CD1	2:B:199:LEU:CD2	2.93	0.47
1:C:487:GLN:HG2	1:C:496:LYS:HD3	1.97	0.47
2:D:146:PHE:HE1	2:D:351:PHE:HZ	1.63	0.47
1:A:830:LEU:HA	1:A:833:ILE:HG22	1.97	0.47
2:B:265:ASP:HB3	2:B:268:THR:OG1	2.15	0.47
1:C:320:LEU:HA	1:C:323:ARG:NH2	2.30	0.47
1:C:467:ALA:HA	1:C:472:PHE:CE1	2.50	0.47
1:A:163:ILE:HG22	1:A:218:VAL:HB	1.97	0.46
2:B:188:SER:O	2:B:191:GLU:HG2	2.15	0.46
2:B:544:THR:HA	2:B:656:GLN:HE22	1.80	0.46
1:C:32:VAL:HG12	1:C:67:HIS:CD2	2.51	0.46
1:A:548:ARG:HB3	1:A:548:ARG:NH1	2.30	0.46
1:A:683:THR:OG1	1:A:684:VAL:N	2.48	0.46
2:B:146:PHE:HE1	2:B:351:PHE:HZ	1.62	0.46
2:B:436:CYS:O	2:B:454:LYS:HA	2.15	0.46
1:A:75:ALA:HA	1:A:78:VAL:HG12	1.97	0.46
1:A:743:LYS:HG3	1:A:746:LEU:HD12	1.97	0.46
2:B:808:VAL:HG23	2:B:809:MET:N	2.29	0.46
2:B:179:TYR:O	2:B:183:VAL:HG23	2.15	0.46
1:C:425:THR:OG1	1:C:426:VAL:N	2.48	0.46
1:C:714:ALA:O	1:C:718:ILE:HG12	2.15	0.46
2:D:126:ILE:CG2	2:D:292:ARG:HD3	2.44	0.46
2:D:409:VAL:HG22	2:D:479:TYR:CZ	2.50	0.46

Continued on next page...

Continued from previous page...

Atom-1	Atom-2	Interatomic distance (Å)	Clash overlap (Å)
1:C:339:GLU:HB2	1:C:347:LYS:HB3	1.96	0.46
1:A:27:VAL:HG22	1:A:60:LEU:CD2	2.44	0.46
1:A:193:LYS:HG2	1:A:195:LEU:HD23	1.98	0.46
1:A:296:LEU:CD2	1:A:301:ILE:HD13	2.45	0.46
4:A:904:NAG:O7	4:A:904:NAG:O3	2.28	0.46
2:B:190:ILE:HD13	2:B:199:LEU:CD2	2.45	0.46
2:B:236:GLU:O	2:B:240:ILE:HG13	2.15	0.46
2:B:458:LYS:HE2	2:B:796:TRP:HH2	1.81	0.46
1:C:115:ARG:HG3	1:C:314:ILE:CG2	2.46	0.46
1:A:27:VAL:HG13	1:A:60:LEU:HB3	1.96	0.46
1:A:128:TYR:HD2	1:A:139:ARG:HH21	1.64	0.46
1:A:224:SER:OG	1:A:227:ASP:OD2	2.34	0.46
2:B:344:PHE:O	2:B:347:ARG:HG3	2.16	0.46
2:B:137:LYS:HZ1	2:B:355:GLY:HA3	1.79	0.46
1:C:58:ILE:HG23	1:C:60:LEU:N	2.28	0.46
2:D:433:THR:HG21	2:D:456:CYS:HB3	1.98	0.46
2:D:460:PHE:CE1	2:D:792:LEU:HB3	2.51	0.46
2:B:344:PHE:O	2:B:345:GLU:HG2	2.15	0.46
1:C:60:LEU:HD12	1:C:60:LEU:O	2.16	0.46
1:C:238:LEU:H	1:C:238:LEU:HD12	1.80	0.46
2:D:130:SER:O	2:D:145:GLN:NE2	2.48	0.46
2:D:223:LEU:HD12	2:D:249:LEU:HD13	1.97	0.46
2:D:299:ILE:HG23	2:D:342:VAL:HG21	1.97	0.46
2:B:611:GLY:O	2:B:616:ASN:HA	2.16	0.46
2:B:657:GLU:HA	2:B:808:VAL:HA	1.98	0.46
1:C:342:GLU:OE1	1:C:342:GLU:CA	2.64	0.46
2:D:376:VAL:HG12	2:D:386:MET:HE3	1.98	0.46
2:D:616:ASN:OD1	2:D:616:ASN:O	2.34	0.46
1:A:451:VAL:O	1:A:453:GLN:NE2	2.50	0.45
2:D:498:ILE:O	2:D:502:VAL:HG23	2.16	0.45
1:A:160:TRP:CH2	1:A:246:VAL:HG11	2.51	0.45
1:C:93:SER:OG	1:C:94:HIS:N	2.49	0.45
2:D:82:ILE:HG12	2:D:115:ILE:HD11	1.98	0.45
2:B:92:ARG:HG2	2:B:94:ILE:CG2	2.43	0.45
2:B:133:ILE:HG13	2:B:148:PRO:O	2.16	0.45
1:C:120:GLY:O	1:C:140:THR:OG1	2.26	0.45
2:D:160:ILE:CD1	2:D:364:ILE:HG12	2.46	0.45
2:B:406:LEU:O	2:B:476:TYR:HA	2.17	0.45
2:D:791:GLU:O	2:D:795:LEU:HD22	2.17	0.45
1:C:31:ALA:O	1:C:64:SER:HA	2.16	0.45
1:A:574:ALA:HB3	1:A:607:MET:CE	2.47	0.45

Continued on next page...

Continued from previous page...

Atom-1	Atom-2	Interatomic distance (Å)	Clash overlap (Å)
2:D:537:MET:HE1	2:D:718:LEU:CD2	2.29	0.45
1:A:291:ALA:CB	1:A:325:LEU:HD12	2.46	0.45
1:A:688:SER:H	3:A:901:GLY:HA2	1.82	0.45
1:C:160:TRP:CH2	1:C:246:VAL:HG11	2.51	0.45
1:C:580:LEU:HD23	1:C:629:ALA:HB2	1.97	0.45
1:A:565:LEU:HD13	2:B:815:ILE:HD11	1.99	0.45
1:A:820:VAL:HG11	2:D:565:MET:HE2	1.98	0.45
1:C:126:SER:OG	1:C:172:GLU:OE1	2.28	0.45
2:D:554:PHE:HE2	2:D:646:TYR:HB2	1.82	0.45
1:A:247:TRP:O	1:A:248:LEU:HD23	2.17	0.45
2:B:673:ARG:NH2	2:B:676:ASP:HB2	2.31	0.45
2:B:682:ARG:HG2	2:B:709:PHE:CZ	2.52	0.45
2:B:691:THR:HG22	5:B:901:7RC:O02	2.17	0.45
2:D:566:LEU:C	2:D:566:LEU:HD23	2.37	0.45
2:B:230:LEU:HD12	2:B:231:TYR:H	1.82	0.44
1:C:456:TYR:HA	1:C:460:ILE:HG13	1.98	0.44
2:D:406:LEU:HD21	2:D:474:PHE:CD2	2.52	0.44
1:A:139:ARG:HB2	1:A:345:ASP:HA	2.00	0.44
1:A:195:LEU:CD2	1:A:211:ALA:HB2	2.48	0.44
2:B:230:LEU:HB3	2:B:258:VAL:HG12	1.99	0.44
1:C:608:TRP:HA	1:C:608:TRP:CE3	2.52	0.44
2:D:384:LEU:HG	2:D:386:MET:HG2	1.99	0.44
1:A:558:PHE:HB2	1:A:563:TRP:CE2	2.53	0.44
2:B:413:GLU:HB2	2:B:416:PHE:HB2	1.99	0.44
1:C:415:LEU:HD11	1:C:421:LYS:HB3	1.98	0.44
2:D:65:VAL:HG23	2:D:65:VAL:O	2.17	0.44
2:D:71:VAL:HG11	2:D:84:ARG:HD3	2.00	0.44
1:A:27:VAL:HG22	1:A:60:LEU:HB3	2.00	0.44
1:A:163:ILE:CD1	1:A:220:ILE:HD12	2.47	0.44
1:A:202:LYS:HE3	1:A:202:LYS:HA	1.98	0.44
1:A:544:LYS:HB3	1:A:544:LYS:HE2	1.86	0.44
1:A:655:LEU:HD13	2:D:649:ASN:OD1	2.16	0.44
2:B:287:TYR:CE2	2:B:292:ARG:HG2	2.52	0.44
2:B:679:PRO:HA	2:B:680:PRO:HD3	1.92	0.44
2:B:690:SER:HA	2:B:693:ARG:NH1	2.32	0.44
1:C:184:LEU:HB3	1:C:189:SER:O	2.18	0.44
1:C:634:MET:HB3	2:D:610:TRP:NE1	2.32	0.44
2:D:43:GLY:HA3	2:D:102:ASP:OD1	2.16	0.44
2:D:176:PHE:CG	2:D:177:PRO:HD2	2.52	0.44
2:D:256:TRP:HB2	2:D:277:LEU:HD12	2.00	0.44
2:D:721:LEU:HD12	2:D:726:LEU:O	2.18	0.44

Continued on next page...

Continued from previous page...

Atom-1	Atom-2	Interatomic distance (Å)	Clash overlap (Å)
2:B:56:LYS:HA	2:B:59:PHE:CD1	2.52	0.44
2:B:389:TYR:CE2	2:B:437:GLN:HG2	2.53	0.44
2:B:691:THR:HG22	5:B:901:7RC:P01	2.58	0.44
1:A:825:VAL:HA	1:A:828:ILE:CG2	2.47	0.44
1:C:58:ILE:CG2	1:C:60:LEU:HD23	2.48	0.44
1:A:92:VAL:HG21	1:A:104:PRO:HB3	1.99	0.44
1:A:131:LYS:N	1:A:131:LYS:HD2	2.32	0.44
1:A:696:GLN:HB3	1:A:699:LEU:HG	2.00	0.44
2:B:311:HIS:ND1	2:B:311:HIS:N	2.63	0.44
1:C:354:MET:HB3	1:C:361:LEU:HG	1.99	0.44
1:C:816:VAL:O	1:C:820:VAL:HG23	2.17	0.44
1:A:824:ILE:O	1:A:828:ILE:HG22	2.18	0.44
2:B:100:ALA:HB2	2:B:126:ILE:HG13	2.00	0.44
2:D:84:ARG:HE	2:D:84:ARG:HA	1.82	0.44
2:D:137:LYS:NZ	2:D:355:GLY:HA3	2.33	0.44
2:D:152:GLN:O	2:D:156:VAL:HG23	2.18	0.44
2:D:153:GLN:O	2:D:157:MET:HG3	2.18	0.44
1:A:123:THR:O	1:A:139:ARG:NH1	2.50	0.44
1:A:613:VAL:HG22	2:B:618:VAL:HG12	2.00	0.44
1:A:813:MET:HE1	2:D:554:PHE:HE1	1.83	0.44
2:B:35:ILE:HB	2:B:95:GLN:HE22	1.83	0.44
2:B:100:ALA:HB2	2:B:126:ILE:CG1	2.48	0.44
2:B:503:MET:HG2	2:B:505:ARG:NH2	2.32	0.44
2:B:629:LYS:HB3	1:C:608:TRP:CH2	2.53	0.44
2:D:516:ASN:OD1	2:D:516:ASN:N	2.50	0.44
1:A:813:MET:HE1	2:D:554:PHE:CE1	2.53	0.43
2:B:294:ARG:HH21	2:B:344:PHE:HZ	1.66	0.43
2:B:457:CYS:SG	2:B:480:LEU:HD21	2.57	0.43
2:D:550:PHE:CE2	2:D:551:LEU:HD21	2.53	0.43
1:A:458:PHE:HE1	1:A:788:LEU:CB	2.32	0.43
2:B:562:MET:HE1	2:B:563:PHE:HE1	1.83	0.43
2:B:567:LEU:HD23	2:B:606:ILE:CD1	2.46	0.43
2:B:516:ASN:OD1	2:B:516:ASN:N	2.51	0.43
1:C:92:VAL:O	1:C:121:LEU:HG	2.19	0.43
2:D:239:TYR:O	2:D:242:GLU:HG2	2.19	0.43
2:D:538:VAL:HG12	2:D:539:SER:N	2.34	0.43
1:C:649:ALA:HB1	2:D:651:ALA:HA	2.01	0.43
2:D:220:LEU:HD23	2:D:220:LEU:HA	1.88	0.43
1:C:571:HIS:O	1:C:575:VAL:HG22	2.19	0.43
1:C:685:LYS:HG2	1:C:710:ASN:CB	2.48	0.43
2:D:412:GLU:OE1	2:D:419:VAL:HG23	2.18	0.43

Continued on next page...

Continued from previous page...

Atom-1	Atom-2	Interatomic distance (Å)	Clash overlap (Å)
1:A:167:VAL:HG13	1:A:173:GLY:HA3	1.99	0.43
1:A:403:ILE:HG12	1:A:404:HIS:H	1.83	0.43
2:B:562:MET:HE2	2:B:563:PHE:CD1	2.53	0.43
1:C:115:ARG:HH21	2:D:105:GLN:HE22	1.66	0.43
1:C:259:LEU:HD23	1:C:259:LEU:O	2.18	0.43
2:D:260:SER:HB3	2:D:280:VAL:O	2.18	0.43
2:B:663:VAL:HG21	2:B:671:PHE:HE2	1.84	0.43
1:C:532:PRO:HA	1:C:758:PHE:O	2.18	0.43
2:D:187:ARG:O	2:D:190:ILE:HG22	2.19	0.43
2:D:497:MET:CE	2:D:513:LEU:HD13	2.49	0.43
1:A:102:PHE:O	1:A:105:THR:HG23	2.18	0.43
1:A:296:LEU:HD23	1:A:301:ILE:HD13	2.00	0.43
2:B:299:ILE:HD11	2:B:349:LEU:HB3	1.99	0.43
1:C:490:VAL:HG23	1:C:495:LYS:O	2.19	0.43
1:A:217:ARG:HB2	1:A:391:GLY:HA2	2.00	0.43
1:A:458:PHE:CE1	1:A:788:LEU:CB	3.00	0.43
2:B:410:THR:HG22	2:B:411:LEU:N	2.30	0.43
1:C:810:PHE:O	1:C:814:ALA:HB2	2.18	0.43
2:D:674:PRO:HA	2:D:677:PHE:CE1	2.54	0.43
2:D:679:PRO:N	2:D:680:PRO:CD	2.81	0.43
2:B:139:GLU:O	2:B:140:SER:OG	2.36	0.42
1:C:82:LEU:HD23	1:C:82:LEU:O	2.18	0.42
1:C:130:ASP:OD1	1:C:130:ASP:N	2.50	0.42
2:D:436:CYS:HB3	2:D:455:LYS:HB2	2.01	0.42
1:A:257:ASN:HB2	1:A:260:ARG:HE	1.84	0.42
2:B:207:MET:HE1	2:B:239:TYR:HD2	1.83	0.42
1:C:541:LEU:HD12	1:C:747:VAL:O	2.19	0.42
1:A:215:GLU:O	1:A:215:GLU:HG3	2.18	0.42
1:A:817:PHE:HA	1:A:820:VAL:HG12	2.00	0.42
2:B:171:ILE:HB	2:B:202:VAL:HG12	2.01	0.42
2:B:201:GLU:OE2	2:B:223:LEU:HD23	2.19	0.42
2:B:777:ASP:N	2:B:777:ASP:OD2	2.51	0.42
2:D:224:GLN:OE1	2:D:224:GLN:N	2.48	0.42
1:A:195:LEU:HD13	1:A:207:LEU:HD22	2.01	0.42
2:B:202:VAL:C	2:B:203:LEU:HD22	2.40	0.42
2:B:566:LEU:HD12	2:B:635:TRP:CZ2	2.53	0.42
1:C:314:ILE:HG22	1:C:315:TRP:N	2.34	0.42
1:C:545:GLU:OE1	1:C:545:GLU:N	2.40	0.42
2:D:409:VAL:HG23	2:D:506:ALA:CB	2.50	0.42
2:D:513:LEU:O	2:D:762:TYR:HA	2.18	0.42
2:D:670:LYS:HA	2:D:677:PHE:CZ	2.53	0.42

Continued on next page...

Continued from previous page...

Atom-1	Atom-2	Interatomic distance (Å)	Clash overlap (Å)
1:A:163:ILE:HD12	1:A:220:ILE:HD12	2.01	0.42
2:B:312:SER:O	2:B:312:SER:OG	2.31	0.42
2:B:421:SER:HA	2:B:455:LYS:C	2.40	0.42
2:B:468:ILE:O	2:B:472:VAL:HG23	2.18	0.42
2:B:567:LEU:HD23	2:B:567:LEU:HA	1.91	0.42
2:B:691:THR:H	5:B:901:7RC:P01	2.43	0.42
1:C:31:ALA:HB1	1:C:33:LEU:HD21	2.01	0.42
2:D:601:THR:HG22	2:D:603:GLY:H	1.84	0.42
1:A:28:ASN:OD1	1:A:28:ASN:N	2.52	0.42
1:A:417:ASP:OD1	1:A:417:ASP:N	2.50	0.42
1:A:788:LEU:HD23	1:A:788:LEU:HA	1.87	0.42
2:B:126:ILE:HG13	2:B:127:HIS:N	2.34	0.42
2:B:334:MET:CA	2:B:337:ARG:HE	2.27	0.42
2:B:414:ALA:CB	2:B:415:PRO:HD3	2.43	0.42
1:C:769:LYS:H	1:C:769:LYS:HG3	1.62	0.42
1:A:249:VAL:HB	1:A:253:GLU:OE1	2.19	0.42
1:C:572:VAL:HA	1:C:575:VAL:HG22	2.00	0.42
1:A:32:VAL:HA	1:A:65:VAL:O	2.20	0.42
1:A:548:ARG:HB3	1:A:548:ARG:HH11	1.84	0.42
2:B:708:LYS:HE3	2:B:708:LYS:HB2	1.91	0.42
1:C:559:GLN:HB3	2:D:814:ASP:HB3	2.01	0.42
2:D:408:ILE:CG2	2:D:510:VAL:HG23	2.50	0.42
1:A:556:GLN:HB3	1:A:557:PRO:HD3	2.02	0.42
2:B:815:ILE:HD12	2:B:815:ILE:HA	1.80	0.42
1:C:427:ASN:HB2	1:C:429:ASP:OD1	2.20	0.42
2:D:171:ILE:O	2:D:202:VAL:HA	2.20	0.42
1:A:353:ILE:HD11	1:A:367:TYR:HB2	2.01	0.42
2:B:69:GLU:OE2	2:B:92:ARG:HD3	2.20	0.42
2:B:460:PHE:CE1	2:B:792:LEU:HB3	2.54	0.42
2:B:721:LEU:HD12	2:B:726:LEU:O	2.20	0.42
1:C:34:SER:HB3	1:C:95:PRO:HB3	2.01	0.42
1:C:283:ASP:OD1	1:C:283:ASP:N	2.52	0.42
1:A:502:MET:CE	1:A:523:ARG:HB2	2.50	0.41
1:A:546:ILE:HG23	1:A:548:ARG:HG3	2.02	0.41
2:D:406:LEU:HD23	2:D:406:LEU:N	2.36	0.41
2:D:468:ILE:HD12	2:D:779:ALA:CB	2.50	0.41
2:B:107:ALA:O	2:B:111:ILE:HG13	2.20	0.41
2:B:631:MET:HA	2:B:634:VAL:HG12	2.02	0.41
1:C:184:LEU:HD22	1:C:189:SER:O	2.20	0.41
1:C:772:VAL:O	1:C:776:ILE:HG12	2.21	0.41
1:A:165:LEU:HD11	1:A:180:LEU:HD23	2.02	0.41

Continued on next page...

Continued from previous page...

Atom-1	Atom-2	Interatomic distance (Å)	Clash overlap (Å)
2:B:535:SER:OG	2:B:736:LEU:HD12	2.20	0.41
1:C:381:TRP:CE2	1:C:388:LYS:HA	2.55	0.41
1:C:692:TYR:O	1:C:696:GLN:HG2	2.20	0.41
2:B:455:LYS:HA	2:B:455:LYS:HD2	1.84	0.41
1:C:58:ILE:HG21	1:C:60:LEU:HD23	2.01	0.41
1:C:125:MET:HA	1:C:125:MET:CE	2.51	0.41
1:C:157:VAL:HG23	1:C:158:TYR:CD2	2.55	0.41
1:C:634:MET:HB3	2:D:610:TRP:CD1	2.55	0.41
1:C:770:GLN:O	1:C:774:LEU:HG	2.20	0.41
1:C:828:ILE:HG23	1:C:829:PHE:N	2.35	0.41
2:D:249:LEU:HD23	2:D:249:LEU:HA	1.89	0.41
2:D:711:GLN:HE22	2:D:720:SER:HB3	1.85	0.41
1:A:195:LEU:HD21	1:A:211:ALA:HB2	2.01	0.41
1:C:739:GLU:OE1	1:C:743:LYS:HE3	2.19	0.41
2:D:436:CYS:CB	2:D:457:CYS:H	2.22	0.41
1:A:698:GLU:C	1:A:699:LEU:HD23	2.41	0.41
1:C:702:MET:O	1:C:706:MET:HG3	2.20	0.41
1:A:316:LYS:HE3	1:A:316:LYS:HB3	1.81	0.41
1:A:685:LYS:HG2	1:A:710:ASN:CB	2.50	0.41
2:D:101:ASP:OD2	2:D:128:GLY:HA3	2.20	0.41
2:D:473:LYS:HE3	2:D:473:LYS:HB2	1.78	0.41
2:D:513:LEU:HD12	2:D:513:LEU:HA	1.92	0.41
1:A:434:VAL:O	1:A:454:CYS:HB2	2.21	0.41
1:C:635:VAL:HG21	2:D:828:ALA:CB	2.45	0.41
1:C:685:LYS:HG2	1:C:710:ASN:HB3	2.02	0.41
2:D:169:PHE:CB	2:D:227:ILE:HB	2.51	0.41
1:A:61:ASN:OD1	4:A:902:NAG:H2	2.21	0.41
1:A:381:TRP:HD1	1:A:385:GLU:O	2.04	0.41
1:A:793:VAL:HG12	1:A:794:ARG:N	2.26	0.41
2:B:157:MET:HG2	2:B:257:ILE:CG2	2.50	0.41
2:B:161:MET:SD	2:B:229:LEU:HD11	2.61	0.41
2:B:287:TYR:HE2	2:B:292:ARG:HG2	1.85	0.41
1:C:133:ILE:HD11	2:D:135:ALA:O	2.21	0.41
1:C:388:LYS:O	1:C:388:LYS:HG3	2.21	0.41
1:C:440:ASN:HB3	1:C:451:VAL:HG21	2.01	0.41
1:C:793:VAL:O	1:C:793:VAL:HG22	2.20	0.41
2:D:323:ASN:O	2:D:323:ASN:ND2	2.54	0.41
2:D:685:THR:OG1	2:D:686:VAL:N	2.54	0.41
2:D:746:CYS:HB3	2:D:804:GLU:OE2	2.21	0.41
1:A:456:TYR:HA	1:A:460:ILE:HG13	2.02	0.41
2:B:152:GLN:O	2:B:156:VAL:HG23	2.20	0.41

Continued on next page...

Continued from previous page...

Atom-1	Atom-2	Interatomic distance (Å)	Clash overlap (Å)
2:D:62:LEU:HD12	2:D:62:LEU:HA	1.93	0.41
2:D:518:GLU:O	2:D:519:ARG:HB3	2.21	0.41
2:B:169:PHE:CB	2:B:227:ILE:HB	2.51	0.40
2:B:188:SER:HA	2:B:191:GLU:HG2	2.02	0.40
2:B:414:ALA:HB3	2:B:415:PRO:CD	2.43	0.40
2:B:439:ARG:HA	2:B:452:TYR:CD1	2.56	0.40
1:C:330:TYR:HB3	1:C:338:VAL:HB	2.03	0.40
1:C:359:ARG:HA	1:C:359:ARG:HD2	1.96	0.40
1:C:565:LEU:HG	2:D:822:PHE:CE1	2.56	0.40
1:C:667:ILE:O	1:C:673:ARG:NH1	2.54	0.40
2:D:524:ASP:OD1	2:D:768:LYS:HD3	2.21	0.40
2:D:550:PHE:HE2	2:D:551:LEU:HD21	1.86	0.40
2:D:792:LEU:O	2:D:796:TRP:HB2	2.21	0.40
1:A:82:LEU:CD1	1:A:307:GLY:H	2.33	0.40
1:A:296:LEU:HD23	1:A:296:LEU:HA	1.86	0.40
1:A:696:GLN:HG3	1:A:699:LEU:CD1	2.48	0.40
2:B:207:MET:HE1	2:B:240:ILE:HG12	2.04	0.40
2:B:406:LEU:HD21	2:B:474:PHE:CD2	2.56	0.40
2:D:100:ALA:HA	2:D:126:ILE:O	2.21	0.40
2:D:207:MET:HE2	2:D:207:MET:HB3	2.01	0.40
2:D:228:ILE:HG21	2:D:256:TRP:CH2	2.55	0.40
1:A:167:VAL:HG13	1:A:173:GLY:CA	2.52	0.40
1:A:330:TYR:CB	1:A:338:VAL:HB	2.51	0.40
1:A:680:ILE:O	1:A:727:HIS:HB2	2.21	0.40
2:D:550:PHE:HD2	2:D:551:LEU:HD23	1.87	0.40
1:A:330:TYR:HB2	1:A:338:VAL:HB	2.04	0.40
1:A:538:LEU:HD12	1:A:754:PHE:HD2	1.86	0.40
2:B:378:LYS:HE2	2:B:378:LYS:HB3	1.96	0.40
2:B:566:LEU:HD23	2:B:566:LEU:C	2.42	0.40
2:B:751:ILE:HD12	2:B:751:ILE:HA	1.89	0.40
1:C:143:PRO:HD2	1:C:146:HIS:ND1	2.36	0.40
2:D:361:LYS:NZ	2:D:380:LYS:HD3	2.36	0.40
2:D:472:VAL:O	2:D:472:VAL:HG12	2.21	0.40
1:A:289:ALA:HA	1:A:292:VAL:HG12	2.04	0.40
1:A:411:VAL:O	1:A:412:LYS:HD3	2.22	0.40
1:A:652:ALA:HA	2:D:648:ALA:HB1	2.02	0.40
2:B:190:ILE:HD11	2:B:199:LEU:HD23	2.02	0.40
2:B:726:LEU:HD21	2:B:728:ALA:O	2.22	0.40
2:D:679:PRO:CD	2:D:680:PRO:HD2	2.51	0.40
2:D:732:ASP:O	2:D:736:LEU:HG	2.22	0.40

There are no symmetry-related clashes.

5.3 Torsion angles

5.3.1 Protein backbone

In the following table, the Percentiles column shows the percent Ramachandran outliers of the chain as a percentile score with respect to all PDB entries followed by that with respect to all EM entries.

The Analysed column shows the number of residues for which the backbone conformation was analysed, and the total number of residues.

Mol	Chain	Analysed	Favoured	Allowed	Outliers	Percentiles	
1	A	773/847 (91%)	742 (96%)	31 (4%)	0	100	100
1	C	780/847 (92%)	748 (96%)	32 (4%)	0	100	100
2	B	760/842 (90%)	719 (95%)	41 (5%)	0	100	100
2	D	760/842 (90%)	712 (94%)	48 (6%)	0	100	100
All	All	3073/3378 (91%)	2921 (95%)	152 (5%)	0	100	100

There are no Ramachandran outliers to report.

5.3.2 Protein sidechains

In the following table, the Percentiles column shows the percent sidechain outliers of the chain as a percentile score with respect to all PDB entries followed by that with respect to all EM entries.

The Analysed column shows the number of residues for which the sidechain conformation was analysed, and the total number of residues.

Mol	Chain	Analysed	Rotameric	Outliers	Percentiles	
1	A	580/730 (80%)	575 (99%)	5 (1%)	75	88
1	C	592/730 (81%)	587 (99%)	5 (1%)	79	89
2	B	600/733 (82%)	591 (98%)	9 (2%)	60	79
2	D	593/733 (81%)	586 (99%)	7 (1%)	67	83
All	All	2365/2926 (81%)	2339 (99%)	26 (1%)	69	84

All (26) residues with a non-rotameric sidechain are listed below:

Mol	Chain	Res	Type
1	A	321	PHE
1	A	361	LEU

Continued on next page...

Continued from previous page...

Mol	Chain	Res	Type
1	A	454	CYS
1	A	671	ARG
1	A	695	ARG
2	B	311	HIS
2	B	389	TYR
2	B	406	LEU
2	B	436	CYS
2	B	562	MET
2	B	681	PHE
2	B	753	SER
2	B	774	ARG
2	B	795	LEU
1	C	190	LYS
1	C	238	LEU
1	C	239	ASN
1	C	283	ASP
1	C	673	ARG
2	D	101	ASP
2	D	287	TYR
2	D	389	TYR
2	D	429	CYS
2	D	550	PHE
2	D	795	LEU
2	D	813	LEU

Sometimes sidechains can be flipped to improve hydrogen bonding and reduce clashes. All (6) such sidechains are listed below:

Mol	Chain	Res	Type
1	A	363	GLN
1	A	453	GLN
1	A	803	ASN
2	B	649	ASN
1	C	812	ASN
2	D	711	GLN

5.3.3 RNA ⓘ

There are no RNA molecules in this entry.

5.4 Non-standard residues in protein, DNA, RNA chains [i](#)

There are no non-standard protein/DNA/RNA residues in this entry.

5.5 Carbohydrates [i](#)

There are no oligosaccharides in this entry.

5.6 Ligand geometry [i](#)

12 ligands are modelled in this entry.

In the following table, the Counts columns list the number of bonds (or angles) for which Mogul statistics could be retrieved, the number of bonds (or angles) that are observed in the model and the number of bonds (or angles) that are defined in the Chemical Component Dictionary. The Link column lists molecule types, if any, to which the group is linked. The Z score for a bond length (or angle) is the number of standard deviations the observed value is removed from the expected value. A bond length (or angle) with $|Z| > 2$ is considered an outlier worth inspection. RMSZ is the root-mean-square of all Z scores of the bond lengths (or angles).

Mol	Type	Chain	Res	Link	Bond lengths			Bond angles		
					Counts	RMSZ	# $ Z > 2$	Counts	RMSZ	# $ Z > 2$
3	GLY	A	901	-	4,4,4	1.13	1 (25%)	3,4,4	1.65	1 (33%)
4	NAG	C	906	1	14,14,15	0.21	0	17,19,21	0.40	0
4	NAG	C	902	1	14,14,15	0.22	0	17,19,21	0.35	0
4	NAG	C	905	1	14,14,15	0.21	0	17,19,21	0.41	0
4	NAG	A	904	1	14,14,15	0.25	0	17,19,21	0.46	0
5	7RC	D	901	-	15,16,16	2.12	1 (6%)	17,22,22	1.50	1 (5%)
3	GLY	C	901	-	4,4,4	1.16	1 (25%)	3,4,4	1.65	1 (33%)
4	NAG	C	903	1	14,14,15	0.21	0	17,19,21	0.41	0
4	NAG	C	904	1	14,14,15	0.21	0	17,19,21	0.40	0
5	7RC	B	901	-	15,16,16	2.12	1 (6%)	17,22,22	1.47	1 (5%)
4	NAG	A	902	1	14,14,15	0.23	0	17,19,21	0.37	0
4	NAG	A	903	1	14,14,15	0.21	0	17,19,21	0.43	0

In the following table, the Chirals column lists the number of chiral outliers, the number of chiral centers analysed, the number of these observed in the model and the number defined in the Chemical Component Dictionary. Similar counts are reported in the Torsion and Rings columns. '-' means no outliers of that kind were identified.

Mol	Type	Chain	Res	Link	Chirals	Torsions	Rings
3	GLY	A	901	-	-	0/2/2/2	-
4	NAG	C	906	1	-	0/6/23/26	0/1/1/1

Continued on next page...

Continued from previous page...

Mol	Type	Chain	Res	Link	Chirals	Torsions	Rings
4	NAG	C	902	1	-	2/6/23/26	0/1/1/1
4	NAG	C	905	1	-	4/6/23/26	0/1/1/1
4	NAG	A	904	1	-	4/6/23/26	0/1/1/1
5	7RC	D	901	-	-	4/11/21/21	1/1/1/1
3	GLY	C	901	-	-	0/2/2/2	-
4	NAG	C	903	1	-	2/6/23/26	0/1/1/1
4	NAG	C	904	1	-	2/6/23/26	0/1/1/1
5	7RC	B	901	-	-	5/11/21/21	1/1/1/1
4	NAG	A	902	1	-	2/6/23/26	0/1/1/1
4	NAG	A	903	1	-	3/6/23/26	0/1/1/1

All (4) bond length outliers are listed below:

Mol	Chain	Res	Type	Atoms	Z	Observed(Å)	Ideal(Å)
5	B	901	7RC	P01-C07	7.47	1.86	1.78
5	D	901	7RC	P01-C07	7.44	1.86	1.78
3	C	901	GLY	OXT-C	-2.16	1.23	1.30
3	A	901	GLY	OXT-C	-2.13	1.23	1.30

All (4) bond angle outliers are listed below:

Mol	Chain	Res	Type	Atoms	Z	Observed(°)	Ideal(°)
5	D	901	7RC	P01-C07-C06	-4.35	109.53	114.98
5	B	901	7RC	P01-C07-C06	-4.35	109.53	114.98
3	C	901	GLY	OXT-C-O	-2.13	117.99	123.30
3	A	901	GLY	OXT-C-O	-2.12	118.02	123.30

There are no chirality outliers.

All (28) torsion outliers are listed below:

Mol	Chain	Res	Type	Atoms
5	D	901	7RC	N02-C01-C08-O05
4	A	904	NAG	O5-C5-C6-O6
4	C	902	NAG	O5-C5-C6-O6
4	C	904	NAG	O5-C5-C6-O6
4	C	903	NAG	C4-C5-C6-O6
4	A	904	NAG	C4-C5-C6-O6
4	C	903	NAG	O5-C5-C6-O6
4	C	905	NAG	C4-C5-C6-O6

Continued on next page...

Continued from previous page...

Mol	Chain	Res	Type	Atoms
4	C	902	NAG	C4-C5-C6-O6
4	A	902	NAG	C4-C5-C6-O6
4	C	905	NAG	C8-C7-N2-C2
4	C	905	NAG	O7-C7-N2-C2
4	C	905	NAG	O5-C5-C6-O6
4	A	902	NAG	O5-C5-C6-O6
4	A	904	NAG	C1-C2-N2-C7
5	B	901	7RC	C06-C04-N01-C03
5	D	901	7RC	C06-C04-N01-C03
4	C	904	NAG	C4-C5-C6-O6
5	D	901	7RC	C06-C04-N01-C02
5	B	901	7RC	C06-C04-N01-C02
4	A	903	NAG	C4-C5-C6-O6
4	A	903	NAG	O5-C5-C6-O6
5	D	901	7RC	N02-C01-C08-O01
5	B	901	7RC	C06-C07-P01-O03
4	A	903	NAG	C3-C2-N2-C7
5	B	901	7RC	N02-C01-C08-O01
4	A	904	NAG	C3-C2-N2-C7
5	B	901	7RC	N02-C01-C08-O05

All (2) ring outliers are listed below:

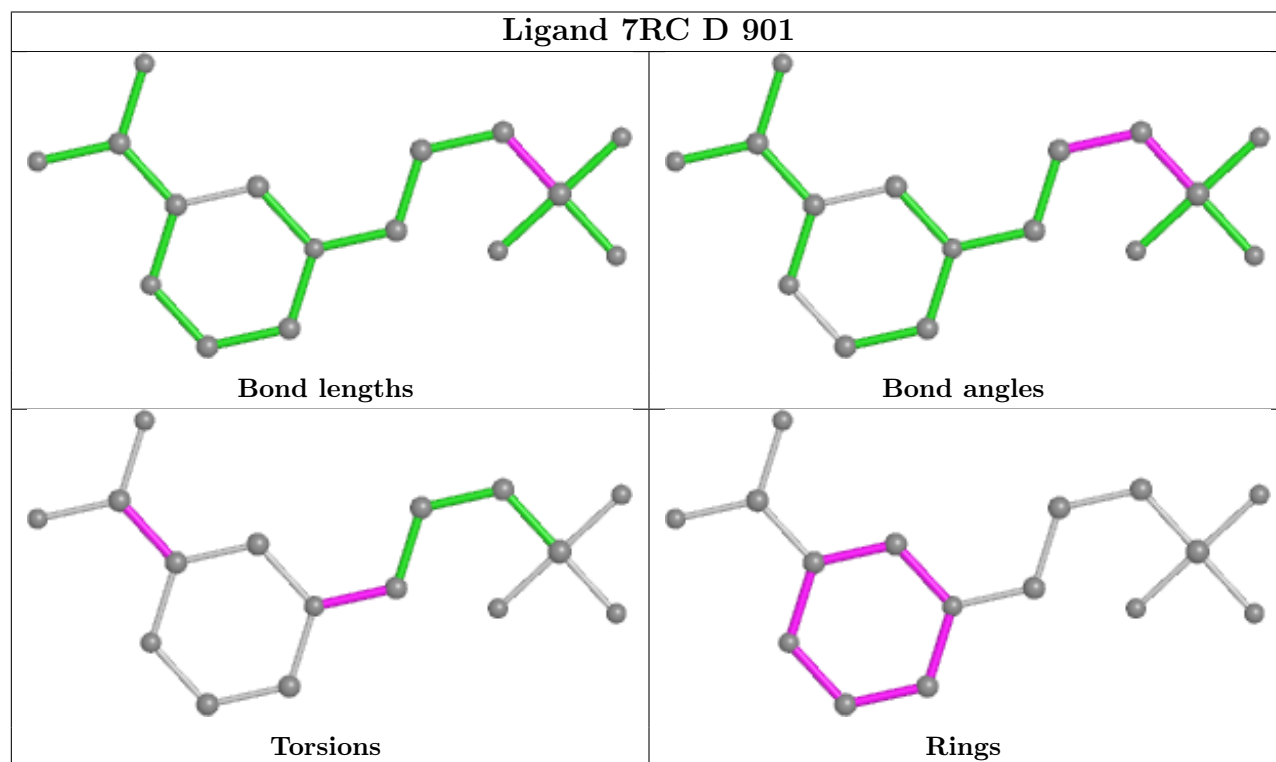
Mol	Chain	Res	Type	Atoms
5	D	901	7RC	C01-C02-C03-C05-N01-N02
5	B	901	7RC	C01-C02-C03-C05-N01-N02

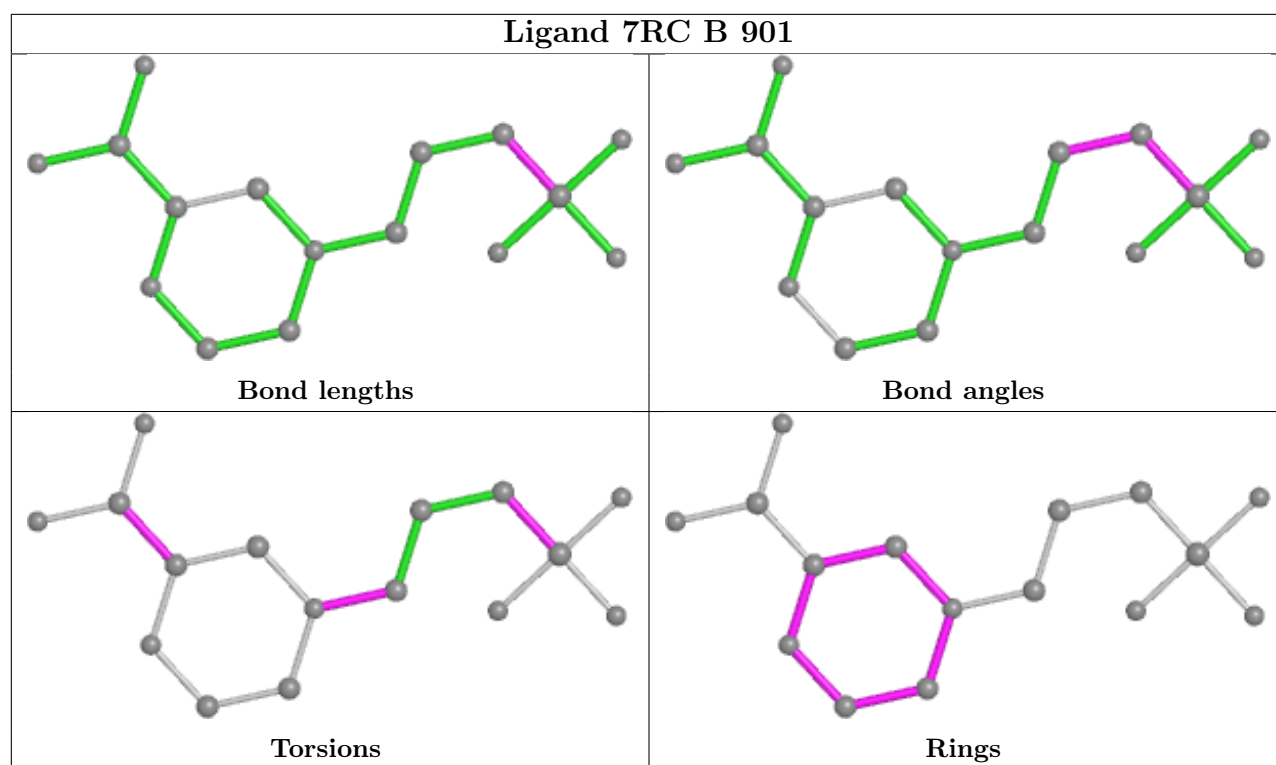
7 monomers are involved in 15 short contacts:

Mol	Chain	Res	Type	Clashes	Symm-Clashes
3	A	901	GLY	1	0
4	C	906	NAG	1	0
4	A	904	NAG	3	0
5	D	901	7RC	3	0
4	C	904	NAG	1	0
5	B	901	7RC	5	0
4	A	902	NAG	1	0

The following is a two-dimensional graphical depiction of Mogul quality analysis of bond lengths, bond angles, torsion angles, and ring geometry for all instances of the Ligand of Interest. In addition, ligands with molecular weight > 250 and outliers as shown on the validation Tables will also be included. For torsion angles, if less than 5% of the Mogul distribution of torsion angles is

within 10 degrees of the torsion angle in question, then that torsion angle is considered an outlier. Any bond that is central to one or more torsion angles identified as an outlier by Mogul will be highlighted in the graph. For rings, the root-mean-square deviation (RMSD) between the ring in question and similar rings identified by Mogul is calculated over all ring torsion angles. If the average RMSD is greater than 60 degrees and the minimal RMSD between the ring in question and any Mogul-identified rings is also greater than 60 degrees, then that ring is considered an outlier. The outliers are highlighted in purple. The color gray indicates Mogul did not find sufficient equivalents in the CSD to analyse the geometry.





5.7 Other polymers [i](#)

There are no such residues in this entry.

5.8 Polymer linkage issues [i](#)

There are no chain breaks in this entry.