



# Full wwPDB X-ray Structure Validation Report ⓘ

Jul 14, 2025 – 04:22 pm BST

PDB ID : 9HV3 / pdb\_00009hv3  
Title : Crystal structure of human GSK3b in complex with ARN25657  
Authors : Dalle Vedove, A.; Di Martino, R.M.C.; Storici, P.; Girotto, S.; Cavalli, A.; Bottegoni, G.  
Deposited on : 2024-12-24  
Resolution : 2.90 Å(reported)

This is a Full wwPDB X-ray Structure Validation Report for a publicly released PDB entry.

We welcome your comments at [validation@mail.wwpdb.org](mailto:validation@mail.wwpdb.org)

A user guide is available at

<https://www.wwpdb.org/validation/2017/XrayValidationReportHelp>

with specific help available everywhere you see the ⓘ symbol.

The types of validation reports are described at

<http://www.wwpdb.org/validation/2017/FAQs#types>.

---

The following versions of software and data (see [references ⓘ](#)) were used in the production of this report:

MolProbity : 4-5-2 with Phenix2.0rc1  
Mogul : 1.8.4, CSD as541be (2020)  
Xtriage (Phenix) : 2.0rc1  
EDS : 3.0  
buster-report : 1.1.7 (2018)  
Percentile statistics : 20231227.v01 (using entries in the PDB archive December 27th 2023)  
CCP4 : 9.0.006 (Gargrove)  
Density-Fitness : 1.0.12  
Ideal geometry (proteins) : Engh & Huber (2001)  
Ideal geometry (DNA, RNA) : Parkinson et al. (1996)  
Validation Pipeline (wwPDB-VP) : 2.44

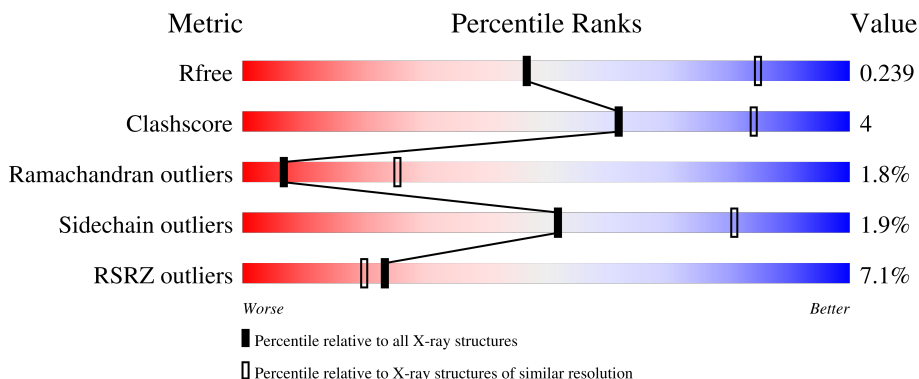
# 1 Overall quality at a glance

The following experimental techniques were used to determine the structure:

*X-RAY DIFFRACTION*

The reported resolution of this entry is 2.90 Å.

Percentile scores (ranging between 0-100) for global validation metrics of the entry are shown in the following graphic. The table shows the number of entries on which the scores are based.



Metric	Whole archive (#Entries)	Similar resolution (#Entries, resolution range(Å))
$R_{free}$	164625	2335 (2.90-2.90)
Clashscore	180529	2564 (2.90-2.90)
Ramachandran outliers	177936	2514 (2.90-2.90)
Sidechain outliers	177891	2516 (2.90-2.90)
RSRZ outliers	164620	2337 (2.90-2.90)

The table below summarises the geometric issues observed across the polymeric chains and their fit to the electron density. The red, orange, yellow and green segments of the lower bar indicate the fraction of residues that contain outliers for  $\geq 3$ , 2, 1 and 0 types of geometric quality criteria respectively. A grey segment represents the fraction of residues that are not modelled. The numeric value for each fraction is indicated below the corresponding segment, with a dot representing fractions  $\leq 5\%$ . The upper red bar (where present) indicates the fraction of residues that have poor fit to the electron density. The numeric value is given above the bar.

Mol	Chain	Length	Quality of chain
1	A	442	<div> <div>6%</div> <div> <div></div> <div>74%</div> <div>7%</div> <div>•</div> <div>18%</div> </div> </div>
1	B	442	<div> <div>6%</div> <div> <div></div> <div>69%</div> <div>11%</div> <div>•</div> <div>19%</div> </div> </div>

## 2 Entry composition

There are 2 unique types of molecules in this entry. The entry contains 5818 atoms, of which 0 are hydrogens and 0 are deuteriums.

In the tables below, the ZeroOcc column contains the number of atoms modelled with zero occupancy, the AltConf column contains the number of residues with at least one atom in alternate conformation and the Trace column contains the number of residues modelled with at most 2 atoms.

- Molecule 1 is a protein called Glycogen synthase kinase-3 beta.

Mol	Chain	Residues	Atoms					ZeroOcc	AltConf	Trace
1	A	361	Total	C	N	O	S	0	0	0
			2889	1853	498	526	12			
1	B	358	Total	C	N	O	S	0	0	0
			2861	1836	491	522	12			

There are 46 discrepancies between the modelled and reference sequences:

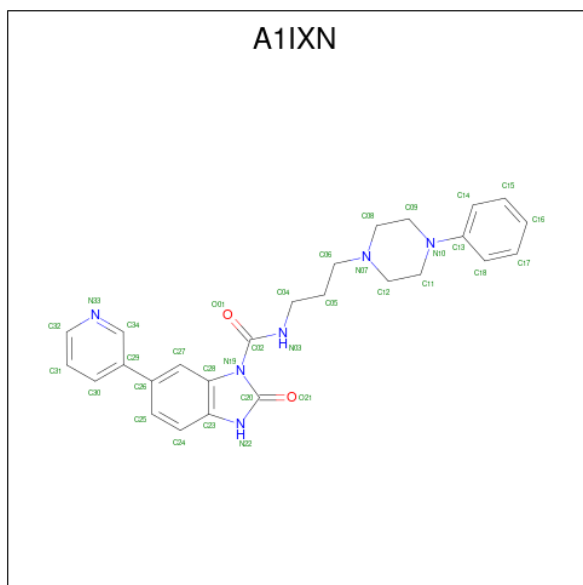
Chain	Residue	Modelled	Actual	Comment	Reference
A	-21	MET	-	initiating methionine	UNP P49841
A	-20	GLY	-	expression tag	UNP P49841
A	-19	HIS	-	expression tag	UNP P49841
A	-18	HIS	-	expression tag	UNP P49841
A	-17	HIS	-	expression tag	UNP P49841
A	-16	HIS	-	expression tag	UNP P49841
A	-15	HIS	-	expression tag	UNP P49841
A	-14	HIS	-	expression tag	UNP P49841
A	-13	SER	-	expression tag	UNP P49841
A	-12	SER	-	expression tag	UNP P49841
A	-11	GLY	-	expression tag	UNP P49841
A	-10	VAL	-	expression tag	UNP P49841
A	-9	ASP	-	expression tag	UNP P49841
A	-8	LEU	-	expression tag	UNP P49841
A	-7	GLY	-	expression tag	UNP P49841
A	-6	THR	-	expression tag	UNP P49841
A	-5	GLU	-	expression tag	UNP P49841
A	-4	ASN	-	expression tag	UNP P49841
A	-3	LEU	-	expression tag	UNP P49841
A	-2	TYR	-	expression tag	UNP P49841
A	-1	PHE	-	expression tag	UNP P49841
A	0	GLN	-	expression tag	UNP P49841
A	1	SER	-	expression tag	UNP P49841
B	-21	MET	-	initiating methionine	UNP P49841
B	-20	GLY	-	expression tag	UNP P49841

*Continued on next page...*

Continued from previous page...

Chain	Residue	Modelled	Actual	Comment	Reference
B	-19	HIS	-	expression tag	UNP P49841
B	-18	HIS	-	expression tag	UNP P49841
B	-17	HIS	-	expression tag	UNP P49841
B	-16	HIS	-	expression tag	UNP P49841
B	-15	HIS	-	expression tag	UNP P49841
B	-14	HIS	-	expression tag	UNP P49841
B	-13	SER	-	expression tag	UNP P49841
B	-12	SER	-	expression tag	UNP P49841
B	-11	GLY	-	expression tag	UNP P49841
B	-10	VAL	-	expression tag	UNP P49841
B	-9	ASP	-	expression tag	UNP P49841
B	-8	LEU	-	expression tag	UNP P49841
B	-7	GLY	-	expression tag	UNP P49841
B	-6	THR	-	expression tag	UNP P49841
B	-5	GLU	-	expression tag	UNP P49841
B	-4	ASN	-	expression tag	UNP P49841
B	-3	LEU	-	expression tag	UNP P49841
B	-2	TYR	-	expression tag	UNP P49841
B	-1	PHE	-	expression tag	UNP P49841
B	0	GLN	-	expression tag	UNP P49841
B	1	SER	-	expression tag	UNP P49841

- Molecule 2 is 2-oxidanylidene- {N}-[3-(4-phenylpiperazin-1-yl)propyl]-6-pyridin-3-yl-3 {H}-benzimidazole-1-carboxamide (CCD ID: A1IXN) (formula: C<sub>26</sub>H<sub>28</sub>N<sub>6</sub>O<sub>2</sub>) (labeled as "Ligand of Interest" by depositor).

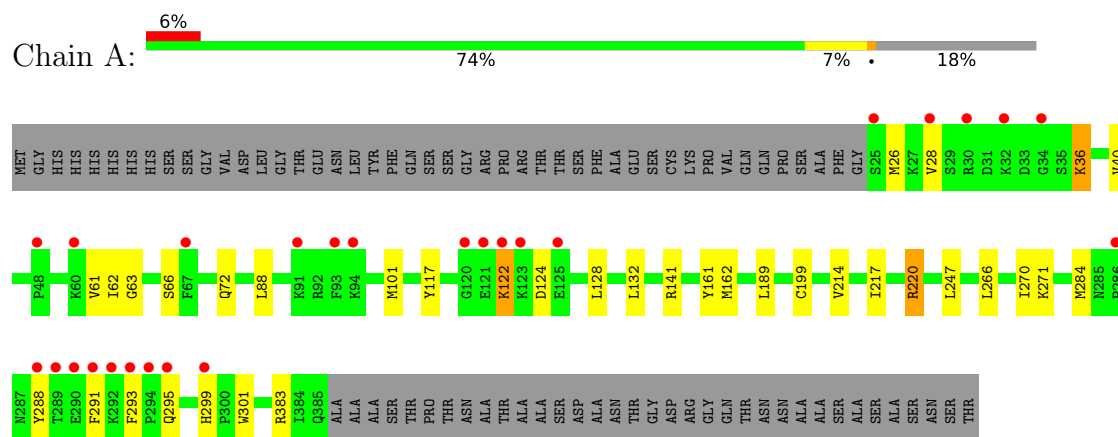


Mol	Chain	Residues	Atoms				ZeroOcc	AltConf
2	A	1	Total	C	N	O	0	0
			34	26	6	2		
2	B	1	Total	C	N	O	0	0
			34	26	6	2		

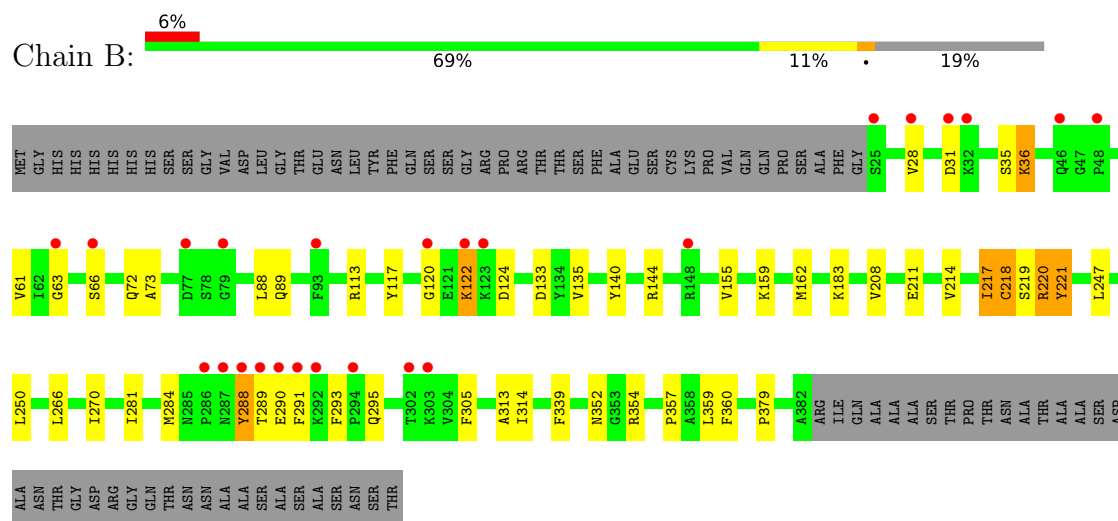
### 3 Residue-property plots

These plots are drawn for all protein, RNA, DNA and oligosaccharide chains in the entry. The first graphic for a chain summarises the proportions of the various outlier classes displayed in the second graphic. The second graphic shows the sequence view annotated by issues in geometry and electron density. Residues are color-coded according to the number of geometric quality criteria for which they contain at least one outlier: green = 0, yellow = 1, orange = 2 and red = 3 or more. A red dot above a residue indicates a poor fit to the electron density ( $RSRZ > 2$ ). Stretches of 2 or more consecutive residues without any outlier are shown as a green connector. Residues present in the sample, but not in the model, are shown in grey.

- Molecule 1: Glycogen synthase kinase-3 beta



- Molecule 1: Glycogen synthase kinase-3 beta



## 4 Data and refinement statistics

Property	Value	Source
Space group	P 21 21 21	Depositor
Cell constants a, b, c, $\alpha$ , $\beta$ , $\gamma$	82.47Å 85.62Å 178.34Å 90.00° 90.00° 90.00°	Depositor
Resolution (Å)	60.55 – 2.90 60.55 – 2.90	Depositor EDS
% Data completeness (in resolution range)	99.9 (60.55-2.90) 99.9 (60.55-2.90)	Depositor EDS
$R_{merge}$	(Not available)	Depositor
$R_{sym}$	(Not available)	Depositor
$\langle I/\sigma(I) \rangle$ <sup>1</sup>	3.00 (at 2.91Å)	Xtriage
Refinement program	PHENIX (1.19.2_4158: ???)	Depositor
R, $R_{free}$	0.206 , 0.238 0.211 , 0.239	Depositor DCC
$R_{free}$ test set	2008 reflections (6.99%)	wwPDB-VP
Wilson B-factor (Å <sup>2</sup> )	64.1	Xtriage
Anisotropy	0.711	Xtriage
Bulk solvent $k_{sol}$ (e/Å <sup>3</sup> ), $B_{sol}$ (Å <sup>2</sup> )	0.34 , 37.9	EDS
L-test for twinning <sup>2</sup>	$\langle  L  \rangle = 0.50$ , $\langle L^2 \rangle = 0.34$	Xtriage
Estimated twinning fraction	0.015 for k,h,-l	Xtriage
$F_o, F_c$ correlation	0.94	EDS
Total number of atoms	5818	wwPDB-VP
Average B, all atoms (Å <sup>2</sup> )	65.0	wwPDB-VP

Xtriage's analysis on translational NCS is as follows: *The largest off-origin peak in the Patterson function is 3.67% of the height of the origin peak. No significant pseudotranslation is detected.*

<sup>1</sup>Intensities estimated from amplitudes.

<sup>2</sup>Theoretical values of  $\langle |L| \rangle$ ,  $\langle L^2 \rangle$  for acentric reflections are 0.5, 0.333 respectively for untwinned datasets, and 0.375, 0.2 for perfectly twinned datasets.

## 5 Model quality

### 5.1 Standard geometry

Bond lengths and bond angles in the following residue types are not validated in this section: A1IXN

The Z score for a bond length (or angle) is the number of standard deviations the observed value is removed from the expected value. A bond length (or angle) with  $|Z| > 5$  is considered an outlier worth inspection. RMSZ is the root-mean-square of all Z scores of the bond lengths (or angles).

Mol	Chain	Bond lengths		Bond angles	
		RMSZ	$\# Z  > 5$	RMSZ	$\# Z  > 5$
1	A	0.40	0/2960	0.58	0/4022
1	B	0.42	0/2932	0.58	0/3985
All	All	0.41	0/5892	0.58	0/8007

There are no bond length outliers.

There are no bond angle outliers.

There are no chirality outliers.

There are no planarity outliers.

### 5.2 Too-close contacts

In the following table, the Non-H and H(model) columns list the number of non-hydrogen atoms and hydrogen atoms in the chain respectively. The H(added) column lists the number of hydrogen atoms added and optimized by MolProbity. The Clashes column lists the number of clashes within the asymmetric unit, whereas Symm-Clashes lists symmetry-related clashes.

Mol	Chain	Non-H	H(model)	H(added)	Clashes	Symm-Clashes
1	A	2889	0	2919	17	0
1	B	2861	0	2887	33	0
2	A	34	0	0	0	0
2	B	34	0	0	1	0
All	All	5818	0	5806	47	0

The all-atom clashscore is defined as the number of clashes found per 1000 atoms (including hydrogen atoms). The all-atom clashscore for this structure is 4.

All (47) close contacts within the same asymmetric unit are listed below, sorted by their clash magnitude.



Atom-1	Atom-2	Interatomic distance (Å)	Clash overlap (Å)
1:A:162:MET:HG3	1:A:247:LEU:HD13	1.69	0.73
1:A:266:LEU:O	1:A:270:ILE:HG12	1.93	0.69
1:A:122:LYS:O	1:A:124:ASP:N	2.26	0.64
1:B:266:LEU:O	1:B:270:ILE:HG12	1.98	0.64
1:A:293:PHE:O	1:A:295:GLN:NE2	2.33	0.61
1:B:89:GLN:HE21	1:B:117:TYR:HE1	1.48	0.61
1:B:113:ARG:NH1	1:B:133:ASP:OD1	2.30	0.61
1:A:214:VAL:HG12	1:B:289:THR:HB	1.83	0.60
1:B:281:ILE:HA	1:B:284:MET:HE3	1.86	0.58
1:B:140:TYR:OH	1:B:144:ARG:NH1	2.38	0.57
1:B:293:PHE:O	1:B:295:GLN:NE2	2.38	0.57
1:A:62:ILE:HD11	1:A:72:GLN:HB2	1.88	0.56
1:B:72:GLN:HG2	1:B:73:ALA:N	2.21	0.54
1:B:122:LYS:O	1:B:124:ASP:N	2.37	0.54
1:B:220:ARG:NE	1:B:220:ARG:O	2.41	0.54
1:B:162:MET:HG3	1:B:247:LEU:HD13	1.89	0.53
1:A:117:TYR:CE1	1:A:128:LEU:HD13	2.45	0.52
1:B:155:VAL:HG12	1:B:159:LYS:HE3	1.92	0.51
1:B:28:VAL:HG13	1:B:36:LYS:HE3	1.93	0.51
1:A:291:PHE:HB2	1:B:214:VAL:HG11	1.92	0.51
1:B:357:PRO:O	1:B:359:LEU:HG	2.11	0.50
1:B:183:LYS:HD3	1:B:219:SER:OG	2.12	0.49
1:A:26:MET:HB3	1:A:40:VAL:HG12	1.95	0.48
1:A:62:ILE:CD1	1:A:72:GLN:HB2	2.44	0.47
1:B:288:TYR:HD1	1:B:290:GLU:H	1.63	0.46
1:A:220:ARG:O	1:A:220:ARG:NH1	2.49	0.46
1:A:28:VAL:HG13	1:A:36:LYS:HE3	1.97	0.46
1:B:162:MET:HE2	1:B:162:MET:HA	1.97	0.46
1:A:214:VAL:HG11	1:B:291:PHE:HB2	1.97	0.45
1:A:122:LYS:C	1:A:124:ASP:H	2.20	0.44
1:B:313:ALA:HB2	1:B:339:PHE:CE1	2.53	0.43
1:B:31:ASP:HB2	1:B:35:SER:OG	2.18	0.43
1:B:220:ARG:O	1:B:221:TYR:HB2	2.19	0.43
1:A:271:LYS:O	1:A:299:HIS:HB2	2.19	0.42
1:B:61:VAL:HG12	1:B:63:GLY:H	1.83	0.42
1:A:161:TYR:CE1	1:A:189:LEU:HD22	2.54	0.42
1:B:208:VAL:HB	1:B:211:GLU:CD	2.44	0.42
1:B:352:ASN:HD21	1:B:354:ARG:HD2	1.84	0.42
1:B:360:PHE:CD1	1:B:379:PRO:HD3	2.55	0.42
1:B:122:LYS:C	1:B:124:ASP:H	2.24	0.42
1:B:250:LEU:HD23	1:B:250:LEU:HA	1.85	0.41
1:B:352:ASN:ND2	1:B:354:ARG:HD2	2.35	0.41

*Continued on next page...*

Continued from previous page...

Atom-1	Atom-2	Interatomic distance (Å)	Clash overlap (Å)
1:B:217:ILE:O	1:B:218:CYS:HB3	2.21	0.41
1:B:133:ASP:O	2:B:501:A1IXN:N22	2.53	0.41
1:B:35:SER:O	1:B:36:LYS:HB3	2.20	0.41
1:A:61:VAL:HG12	1:A:63:GLY:H	1.85	0.40
1:B:305:PHE:CD2	1:B:314:ILE:HG12	2.57	0.40

There are no symmetry-related clashes.

## 5.3 Torsion angles [i](#)

### 5.3.1 Protein backbone [i](#)

In the following table, the Percentiles column shows the percent Ramachandran outliers of the chain as a percentile score with respect to all X-ray entries followed by that with respect to entries of similar resolution.

The Analysed column shows the number of residues for which the backbone conformation was analysed, and the total number of residues.

Mol	Chain	Analysed	Favoured	Allowed	Outliers	Percentiles	
1	A	359/442 (81%)	331 (92%)	22 (6%)	6 (2%)	7	27
1	B	356/442 (80%)	321 (90%)	28 (8%)	7 (2%)	6	23
All	All	715/884 (81%)	652 (91%)	50 (7%)	13 (2%)	7	25

All (13) Ramachandran outliers are listed below:

Mol	Chain	Res	Type
1	B	122	LYS
1	A	66	SER
1	A	122	LYS
1	A	284	MET
1	B	66	SER
1	B	221	TYR
1	B	288	TYR
1	A	301	TRP
1	A	288	TYR
1	B	36	LYS
1	A	36	LYS
1	B	218	CYS
1	B	120	GLY

### 5.3.2 Protein sidechains ⓘ

In the following table, the Percentiles column shows the percent sidechain outliers of the chain as a percentile score with respect to all X-ray entries followed by that with respect to entries of similar resolution.

The Analysed column shows the number of residues for which the sidechain conformation was analysed, and the total number of residues.

Mol	Chain	Analysed	Rotameric	Outliers	Percentiles	
1	A	322/383 (84%)	314 (98%)	8 (2%)	42	75
1	B	319/383 (83%)	315 (99%)	4 (1%)	65	88
All	All	641/766 (84%)	629 (98%)	12 (2%)	52	81

All (12) residues with a non-rotameric sidechain are listed below:

Mol	Chain	Res	Type
1	A	88	LEU
1	A	101	MET
1	A	132	LEU
1	A	141	ARG
1	A	199	CYS
1	A	217	ILE
1	A	220	ARG
1	A	383	ARG
1	B	88	LEU
1	B	135	VAL
1	B	217	ILE
1	B	220	ARG

Sometimes sidechains can be flipped to improve hydrogen bonding and reduce clashes. All (5) such sidechains are listed below:

Mol	Chain	Res	Type
1	A	145	HIS
1	A	213	ASN
1	A	381	HIS
1	B	52	GLN
1	B	89	GLN

### 5.3.3 RNA ⓘ

There are no RNA molecules in this entry.

## 5.4 Non-standard residues in protein, DNA, RNA chains [i](#)

There are no non-standard protein/DNA/RNA residues in this entry.

## 5.5 Carbohydrates [i](#)

There are no oligosaccharides in this entry.

## 5.6 Ligand geometry [i](#)

2 ligands are modelled in this entry.

In the following table, the Counts columns list the number of bonds (or angles) for which Mogul statistics could be retrieved, the number of bonds (or angles) that are observed in the model and the number of bonds (or angles) that are defined in the Chemical Component Dictionary. The Link column lists molecule types, if any, to which the group is linked. The Z score for a bond length (or angle) is the number of standard deviations the observed value is removed from the expected value. A bond length (or angle) with  $|Z| > 2$  is considered an outlier worth inspection. RMSZ is the root-mean-square of all Z scores of the bond lengths (or angles).

Mol	Type	Chain	Res	Link	Bond lengths			Bond angles		
					Counts	RMSZ	# Z  > 2	Counts	RMSZ	# Z  > 2
2	A1IXN	A	501	-	38,38,38	2.57	15 (39%)	51,52,52	1.67	8 (15%)
2	A1IXN	B	501	-	38,38,38	2.69	14 (36%)	51,52,52	1.67	9 (17%)

In the following table, the Chirals column lists the number of chiral outliers, the number of chiral centers analysed, the number of these observed in the model and the number defined in the Chemical Component Dictionary. Similar counts are reported in the Torsion and Rings columns. '-' means no outliers of that kind were identified.

Mol	Type	Chain	Res	Link	Chirals	Torsions	Rings
2	A1IXN	A	501	-	-	1/19/29/29	0/5/5/5
2	A1IXN	B	501	-	-	5/19/29/29	0/5/5/5

All (29) bond length outliers are listed below:

Mol	Chain	Res	Type	Atoms	Z	Observed(Å)	Ideal(Å)
2	B	501	A1IXN	C06-N07	-8.48	1.27	1.47
2	A	501	A1IXN	C06-N07	-8.10	1.28	1.47
2	B	501	A1IXN	C23-N22	5.68	1.49	1.38
2	B	501	A1IXN	C20-N22	5.17	1.42	1.37
2	B	501	A1IXN	C13-N10	5.06	1.52	1.38
2	A	501	A1IXN	C23-N22	4.89	1.47	1.38

*Continued on next page...*

*Continued from previous page...*

Mol	Chain	Res	Type	Atoms	Z	Observed(Å)	Ideal(Å)
2	A	501	A1IXN	C13-N10	4.79	1.51	1.38
2	A	501	A1IXN	C20-N22	4.66	1.42	1.37
2	B	501	A1IXN	C20-N19	4.33	1.47	1.40
2	A	501	A1IXN	C20-N19	3.96	1.46	1.40
2	A	501	A1IXN	C29-C26	-3.61	1.40	1.49
2	B	501	A1IXN	C02-N19	3.46	1.47	1.43
2	A	501	A1IXN	C02-N19	3.34	1.47	1.43
2	B	501	A1IXN	O21-C20	-3.17	1.17	1.23
2	A	501	A1IXN	C08-N07	-3.11	1.38	1.46
2	B	501	A1IXN	C12-N07	-3.09	1.38	1.46
2	B	501	A1IXN	C08-N07	-3.09	1.38	1.46
2	B	501	A1IXN	C25-C26	3.07	1.45	1.39
2	A	501	A1IXN	O21-C20	-2.91	1.17	1.23
2	A	501	A1IXN	C25-C26	2.88	1.45	1.39
2	B	501	A1IXN	C29-C26	-2.78	1.42	1.49
2	B	501	A1IXN	C18-C13	2.73	1.44	1.39
2	A	501	A1IXN	C18-C13	2.73	1.44	1.39
2	A	501	A1IXN	C12-N07	-2.49	1.40	1.46
2	B	501	A1IXN	C02-N03	2.28	1.44	1.34
2	A	501	A1IXN	C23-C28	2.28	1.43	1.40
2	A	501	A1IXN	C24-C23	2.21	1.43	1.39
2	A	501	A1IXN	C02-N03	2.16	1.43	1.34
2	B	501	A1IXN	C23-C28	2.07	1.43	1.40

All (17) bond angle outliers are listed below:

Mol	Chain	Res	Type	Atoms	Z	Observed(°)	Ideal(°)
2	B	501	A1IXN	C04-N03-C02	-5.16	116.03	120.84
2	A	501	A1IXN	C12-N07-C08	5.07	120.23	108.83
2	B	501	A1IXN	C23-N22-C20	-5.05	107.23	110.28
2	A	501	A1IXN	C23-N22-C20	-4.73	107.42	110.28
2	B	501	A1IXN	C12-N07-C08	3.96	117.75	108.83
2	A	501	A1IXN	N22-C20-N19	3.83	108.19	106.37
2	B	501	A1IXN	C05-C06-N07	-3.43	105.19	113.84
2	A	501	A1IXN	C04-N03-C02	-3.28	117.79	120.84
2	A	501	A1IXN	C31-C30-C29	-2.96	116.84	120.56
2	B	501	A1IXN	C12-C11-N10	2.95	116.43	110.70
2	B	501	A1IXN	N22-C20-N19	2.71	107.66	106.37
2	B	501	A1IXN	C32-N33-C34	2.66	121.46	116.85
2	A	501	A1IXN	C32-N33-C34	2.40	121.01	116.85
2	B	501	A1IXN	C11-C12-N07	2.37	115.51	110.64
2	A	501	A1IXN	C11-N10-C13	2.33	124.40	118.09

*Continued on next page...*

*Continued from previous page...*

Mol	Chain	Res	Type	Atoms	Z	Observed(°)	Ideal(°)
2	B	501	A1IXN	C24-C23-C28	-2.08	119.32	121.33
2	A	501	A1IXN	C14-C13-N10	-2.07	118.53	121.38

There are no chirality outliers.

All (6) torsion outliers are listed below:

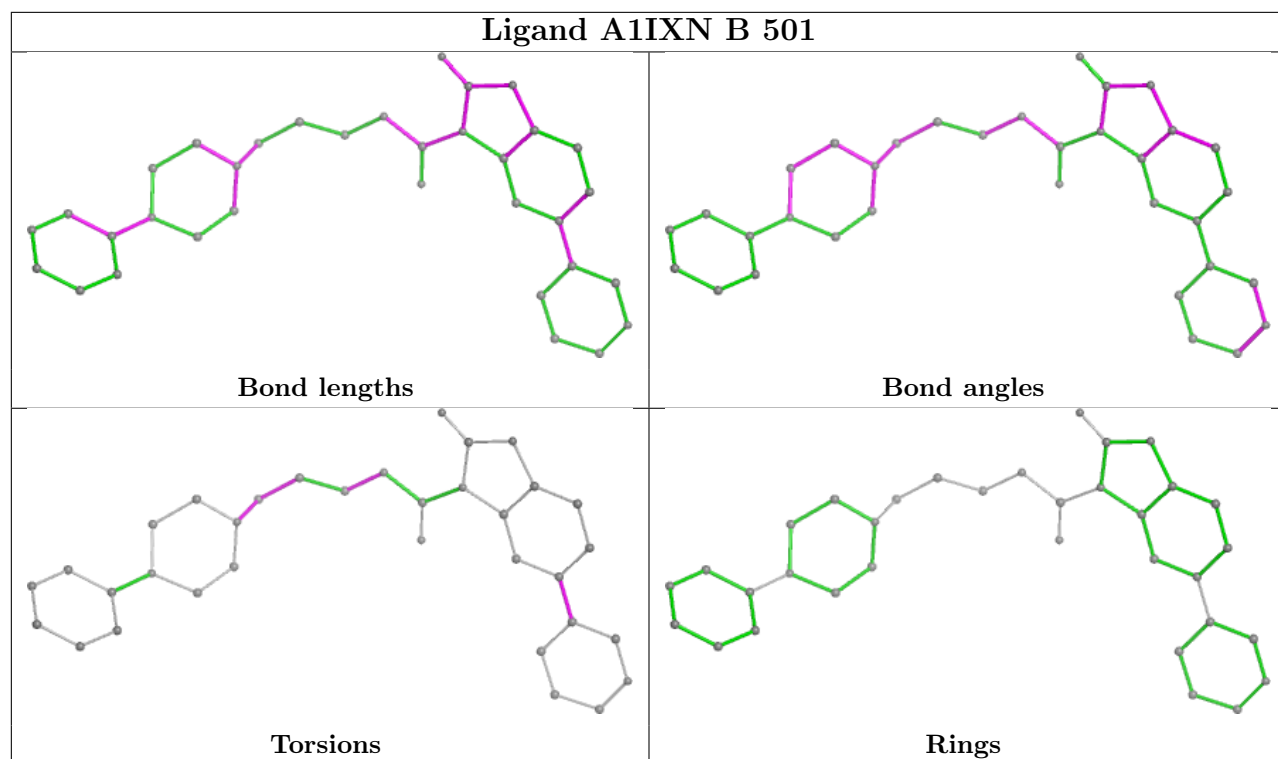
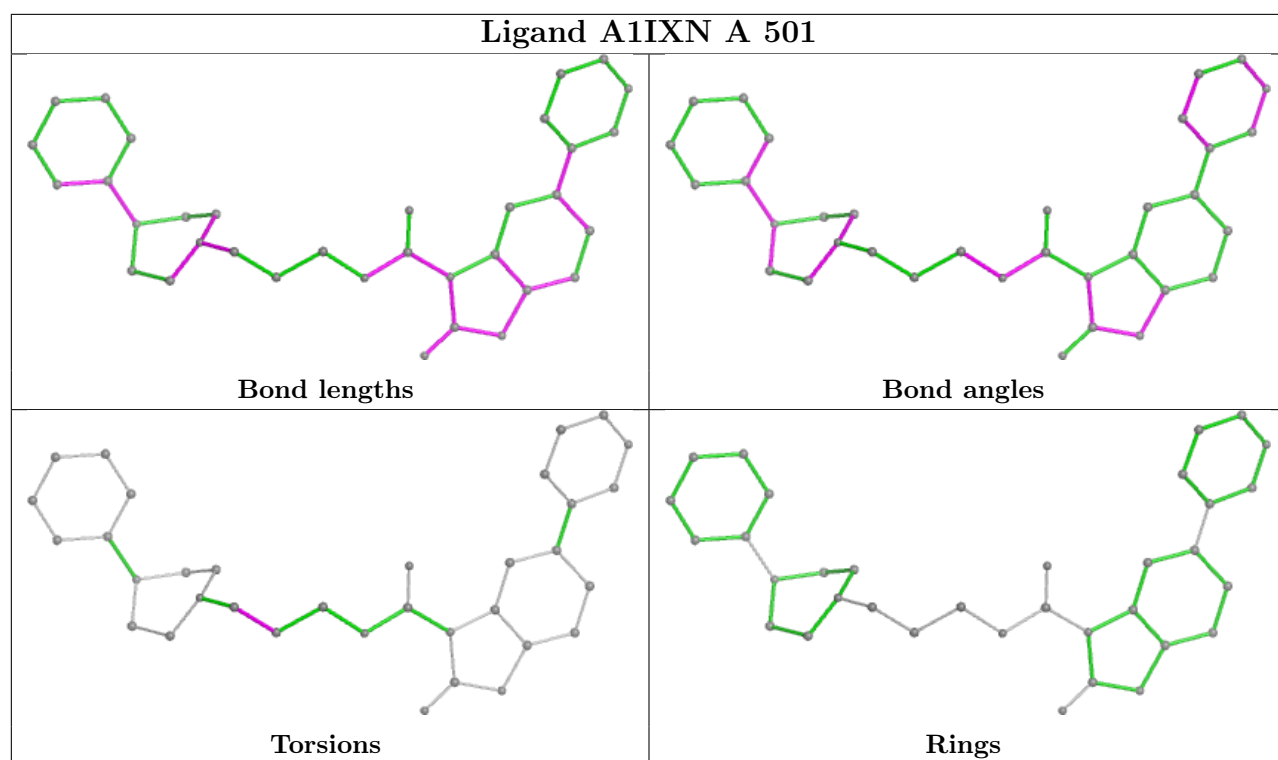
Mol	Chain	Res	Type	Atoms
2	B	501	A1IXN	C04-C05-C06-N07
2	A	501	A1IXN	C04-C05-C06-N07
2	B	501	A1IXN	C05-C06-N07-C12
2	B	501	A1IXN	C05-C06-N07-C08
2	B	501	A1IXN	C27-C26-C29-C34
2	B	501	A1IXN	C05-C04-N03-C02

There are no ring outliers.

1 monomer is involved in 1 short contact:

Mol	Chain	Res	Type	Clashes	Symm-Clashes
2	B	501	A1IXN	1	0

The following is a two-dimensional graphical depiction of Mogul quality analysis of bond lengths, bond angles, torsion angles, and ring geometry for all instances of the Ligand of Interest. In addition, ligands with molecular weight > 250 and outliers as shown on the validation Tables will also be included. For torsion angles, if less than 5% of the Mogul distribution of torsion angles is within 10 degrees of the torsion angle in question, then that torsion angle is considered an outlier. Any bond that is central to one or more torsion angles identified as an outlier by Mogul will be highlighted in the graph. For rings, the root-mean-square deviation (RMSD) between the ring in question and similar rings identified by Mogul is calculated over all ring torsion angles. If the average RMSD is greater than 60 degrees and the minimal RMSD between the ring in question and any Mogul-identified rings is also greater than 60 degrees, then that ring is considered an outlier. The outliers are highlighted in purple. The color gray indicates Mogul did not find sufficient equivalents in the CSD to analyse the geometry.



## 5.7 Other polymers ⓘ

There are no such residues in this entry.

## 5.8 Polymer linkage issues ⓘ

There are no chain breaks in this entry.



## 6 Fit of model and data

### 6.1 Protein, DNA and RNA chains

In the following table, the column labelled ‘#RSRZ > 2’ contains the number (and percentage) of RSRZ outliers, followed by percent RSRZ outliers for the chain as percentile scores relative to all X-ray entries and entries of similar resolution. The OWAB column contains the minimum, median, 95<sup>th</sup> percentile and maximum values of the occupancy-weighted average B-factor per residue. The column labelled ‘Q < 0.9’ lists the number of (and percentage) of residues with an average occupancy less than 0.9.

Mol	Chain	Analysed	<RSRZ>	#RSRZ>2	OWAB(Å <sup>2</sup> )	Q<0.9
1	A	361/442 (81%)	0.15	26 (7%) 23 20	38, 60, 110, 140	0
1	B	358/442 (80%)	0.14	25 (6%) 24 20	38, 56, 111, 146	0
All	All	719/884 (81%)	0.15	51 (7%) 23 20	38, 58, 112, 146	0

All (51) RSRZ outliers are listed below:

Mol	Chain	Res	Type	RSRZ
1	B	289	THR	6.2
1	B	291	PHE	5.6
1	A	291	PHE	5.5
1	A	120	GLY	4.4
1	A	289	THR	4.3
1	B	32	LYS	4.1
1	A	93	PHE	4.1
1	A	288	TYR	3.9
1	B	288	TYR	3.9
1	B	93	PHE	3.9
1	B	302	THR	3.7
1	B	46	GLN	3.5
1	A	30	ARG	3.2
1	B	63	GLY	3.1
1	A	94	LYS	3.1
1	A	286	PRO	3.1
1	B	120	GLY	3.0
1	B	31	ASP	2.9
1	A	290	GLU	2.9
1	A	292	LYS	2.8
1	B	28	VAL	2.8
1	B	48	PRO	2.8
1	B	66	SER	2.7
1	A	121	GLU	2.7

*Continued on next page...*

*Continued from previous page...*

Mol	Chain	Res	Type	RSRZ
1	A	294	PRO	2.7
1	A	123	LYS	2.6
1	A	34	GLY	2.6
1	B	123	LYS	2.6
1	A	32	LYS	2.5
1	B	25	SER	2.5
1	B	79	GLY	2.5
1	A	122	LYS	2.4
1	A	125	GLU	2.4
1	A	60	LYS	2.4
1	B	303	LYS	2.4
1	B	148	ARG	2.4
1	A	299	HIS	2.4
1	B	287	ASN	2.4
1	B	290	GLU	2.3
1	A	295	GLN	2.3
1	A	48	PRO	2.3
1	B	292	LYS	2.3
1	A	293	PHE	2.3
1	B	294	PRO	2.3
1	B	122	LYS	2.2
1	B	286	PRO	2.2
1	A	28	VAL	2.1
1	A	67	PHE	2.1
1	A	25	SER	2.0
1	A	91	LYS	2.0
1	B	77	ASP	2.0

## 6.2 Non-standard residues in protein, DNA, RNA chains [i](#)

There are no non-standard protein/DNA/RNA residues in this entry.

## 6.3 Carbohydrates [i](#)

There are no oligosaccharides in this entry.

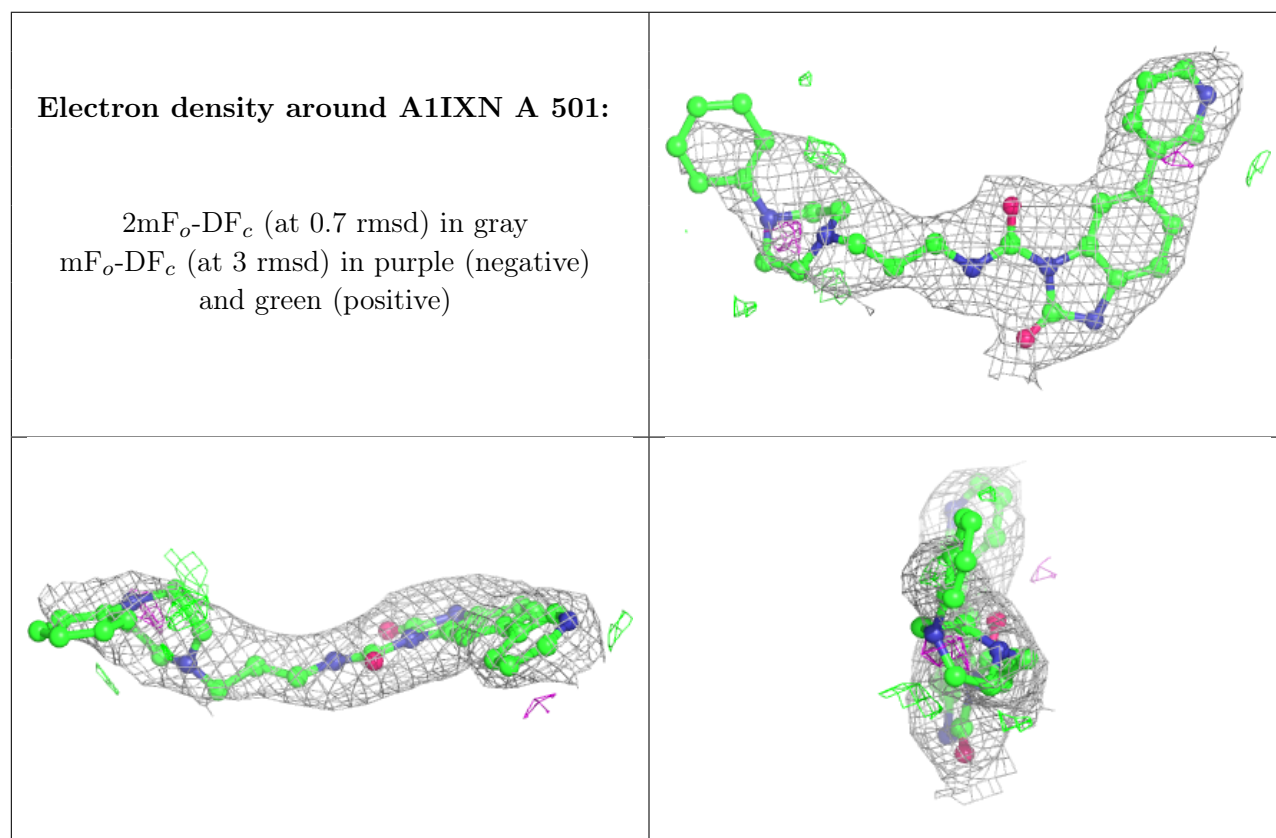
## 6.4 Ligands [i](#)

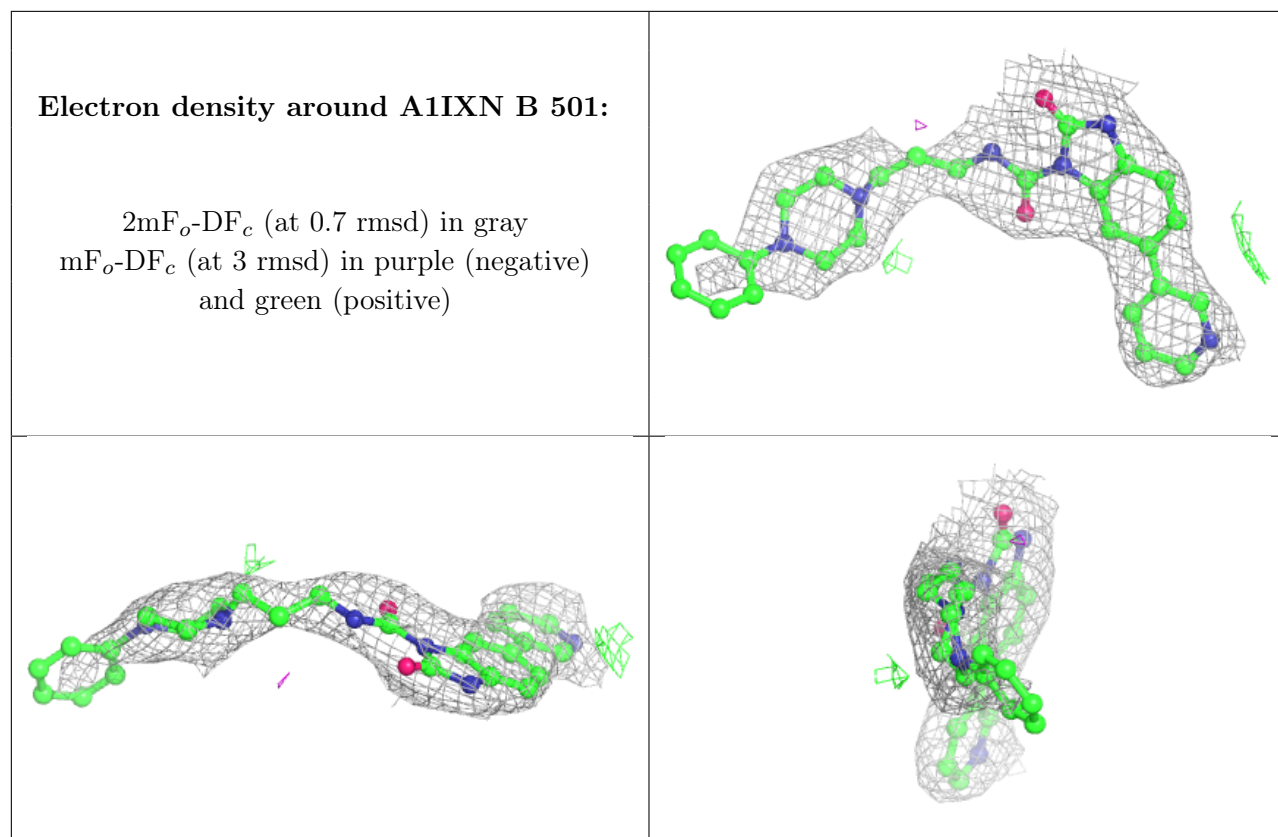
In the following table, the Atoms column lists the number of modelled atoms in the group and the number defined in the chemical component dictionary. The B-factors column lists the minimum,

median, 95<sup>th</sup> percentile and maximum values of B factors of atoms in the group. The column labelled 'Q<0.9' lists the number of atoms with occupancy less than 0.9.

Mol	Type	Chain	Res	Atoms	RSCC	RSR	B-factors(Å <sup>2</sup> )	Q<0.9
2	A1IXN	A	501	34/34	0.90	0.15	48,62,108,112	0
2	A1IXN	B	501	34/34	0.92	0.14	48,59,108,113	0

The following is a graphical depiction of the model fit to experimental electron density of all instances of the Ligand of Interest. In addition, ligands with molecular weight > 250 and outliers as shown on the geometry validation Tables will also be included. Each fit is shown from different orientation to approximate a three-dimensional view.





## 6.5 Other polymers [i](#)

There are no such residues in this entry.