



Full wwPDB X-ray Structure Validation Report ⓘ

Mar 9, 2026 – 06:55 PM UTC

PDB ID : 7HKZ / pdb_00007hkh
Title : Group deposition for crystallographic fragment screening of the NS5 RNA-dependent RNA polymerase from Dengue virus serotype 2 – Crystal structure of the NS5 RNA-dependent RNA polymerase from Dengue virus serotype 2 in complex with POB0029 (DENV2_NS5A-x0851)
Authors : Saini, M.; Chopra, A.; Aschenbrenner, J.C.; Marples, P.G.; Balcomb, B.H.; Fearon, D.; von Delft, F.; Ruiz, F.X.; Arnold, E.
Deposited on : 2024-10-15
Resolution : 1.66 Å(reported)

This is a Full wwPDB X-ray Structure Validation Report for a publicly released PDB entry.

We welcome your comments at validation@mail.wwpdb.org

A user guide is available at

<https://www.wwpdb.org/validation/2017/XrayValidationReportHelp>

with specific help available everywhere you see the ⓘ symbol.

The types of validation reports are described at

<http://www.wwpdb.org/validation/2017/FAQs#types>.

The following versions of software and data (see [references ⓘ](#)) were used in the production of this report:

MolProbity : 4-5-2 with Phenix2.0
Mogul : 2022.3.0, CSD as543be (2022)
Xtriage (Phenix) : 2.0
EDS : 3.0
Buster-report : wwPDB partial adaption of 1.1.7 (2018)
Percentile statistics : 20250101.v01 (using entries in the PDB archive January 1st 2025)
CCP4 : 9.0.010 (Gargrove)
Density-Fitness : 1.0.12
Ideal geometry (proteins) : Engh & Huber (2001)

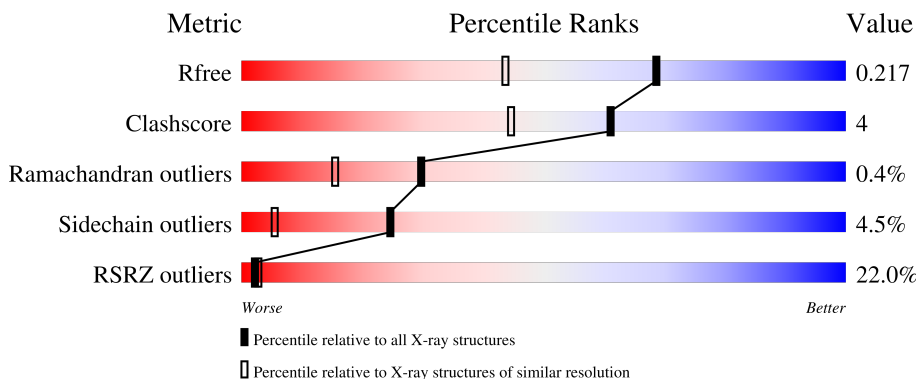
1 Overall quality at a glance

The following experimental techniques were used to determine the structure:

X-RAY DIFFRACTION

The reported resolution of this entry is 1.66 Å.

Percentile scores (ranging between 0-100) for global validation metrics of the entry are shown in the following graphic. The table shows the number of entries on which the scores are based.



Metric	Whole archive (#Entries)	Similar resolution (#Entries, resolution range(Å))
R_{free}	180053	2563 (1.66-1.66)
Clashscore	190562	2662 (1.66-1.66)
Ramachandran outliers	187476	2621 (1.66-1.66)
Sidechain outliers	187428	2621 (1.66-1.66)
RSRZ outliers	180081	2564 (1.66-1.66)

The table below summarises the geometric issues observed across the polymeric chains and their fit to the electron density. The red, orange, yellow and green segments of the lower bar indicate the fraction of residues that contain outliers for ≥ 3 , 2, 1 and 0 types of geometric quality criteria respectively. A grey segment represents the fraction of residues that are not modelled. The numeric value for each fraction is indicated below the corresponding segment, with a dot representing fractions $\leq 5\%$. The upper red bar (where present) indicates the fraction of residues that have poor fit to the electron density. The numeric value is given above the bar.

Mol	Chain	Length	Quality of chain
1	A	637	

The following table lists non-polymeric compounds, carbohydrate monomers and non-standard residues in protein, DNA, RNA chains that are outliers for geometric or electron-density-fit criteria:

Ideal geometry (DNA, RNA) : Parkinson et al. (1996)
 Validation Pipeline (wwPDB-VP) : 2.49

Mol	Type	Chain	Res	Chirality	Geometry	Clashes	Electron density
5	PO4	A	1007	-	-	X	-
7	A1BDG	A	1011[A]	-	-	-	X

2 Entry composition [i](#)

There are 8 unique types of molecules in this entry. The entry contains 5335 atoms, of which 0 are hydrogens and 0 are deuteriums.

In the tables below, the ZeroOcc column contains the number of atoms modelled with zero occupancy, the AltConf column contains the number of residues with at least one atom in alternate conformation and the Trace column contains the number of residues modelled with at most 2 atoms.

- Molecule 1 is a protein called Genome polyprotein.

Mol	Chain	Residues	Atoms					ZeroOcc	AltConf	Trace
			Total	C	N	O	S			
1	A	581	4799	3021	860	884	34	0	6	0

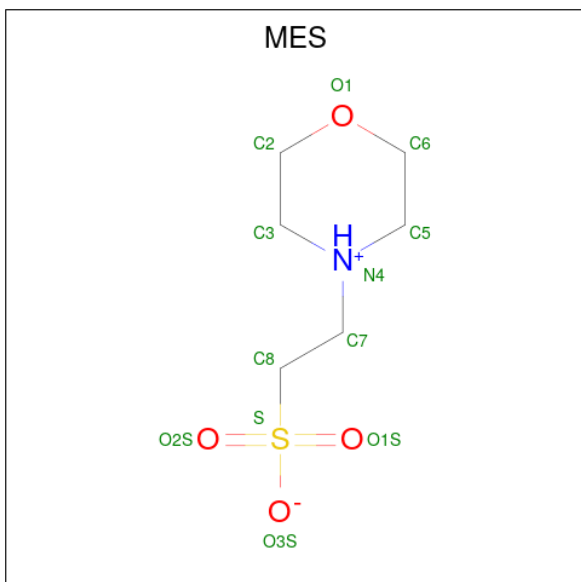
There are 2 discrepancies between the modelled and reference sequences:

Chain	Residue	Modelled	Actual	Comment	Reference
A	264	GLY	-	expression tag	UNP Q91H74
A	265	PRO	-	expression tag	UNP Q91H74

- Molecule 2 is ZINC ION (CCD ID: ZN) (formula: Zn).

Mol	Chain	Residues	Atoms		ZeroOcc	AltConf
			Total	Zn		
2	A	2	2	2	0	0

- Molecule 3 is 2-(N-MORPHOLINO)-ETHANESULFONIC ACID (CCD ID: MES) (formula: C₆H₁₃NO₄S).



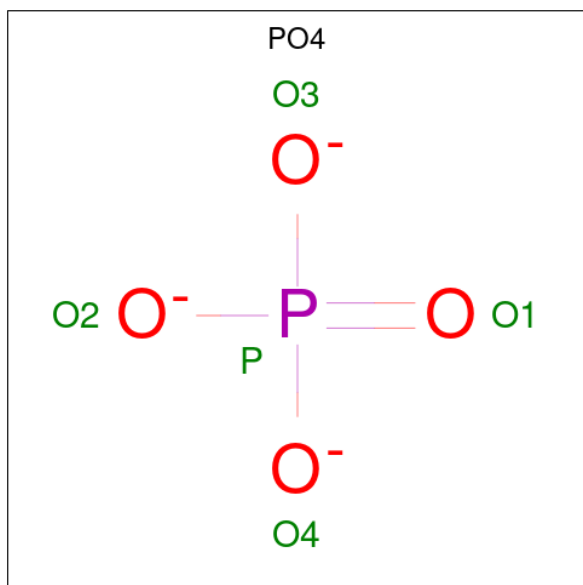
Mol	Chain	Residues	Atoms					ZeroOcc	AltConf
			Total	C	N	O	S		
3	A	1	24	12	2	8	2	0	1

- Molecule 4 is DIMETHYL SULFOXIDE (CCD ID: DMS) (formula: C₂H₆OS).



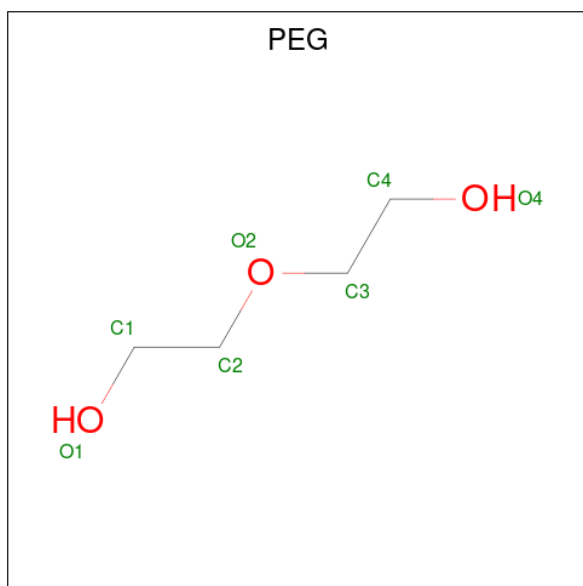
Mol	Chain	Residues	Atoms				ZeroOcc	AltConf
			Total	C	O	S		
4	A	1	4	2	1	1	0	0
4	A	1	4	2	1	1	0	0
4	A	1	4	2	1	1	0	0

- Molecule 5 is PHOSPHATE ION (CCD ID: PO4) (formula: O₄P).



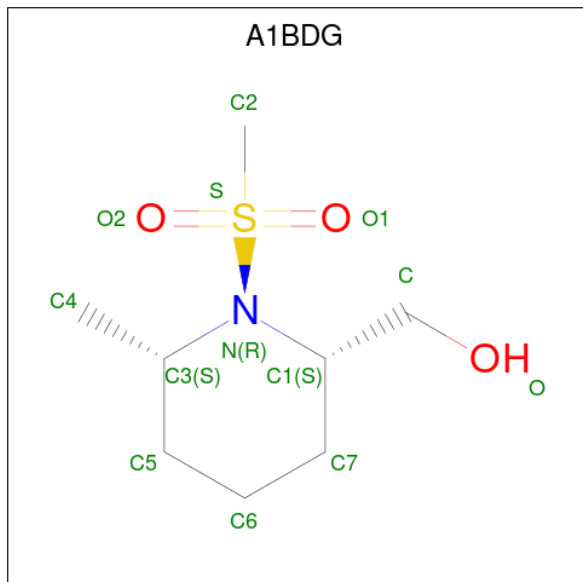
Mol	Chain	Residues	Atoms			ZeroOcc	AltConf
5	A	1	Total	O	P	0	0
			5	4	1		
5	A	1	Total	O	P	0	0
			5	4	1		

- Molecule 6 is DI(HYDROXYETHYL)ETHER (CCD ID: PEG) (formula: $C_4H_{10}O_3$).



Mol	Chain	Residues	Atoms			ZeroOcc	AltConf
6	A	1	Total	C	O	0	0
			7	4	3		
6	A	1	Total	C	O	0	0
			7	4	3		

- Molecule 7 is [(2S,6R)-1-(methanesulfonyl)-6-methylpiperidin-2-yl]methanol (CCD ID: A1BDG) (formula: C₈H₁₇NO₃S) (labeled as "Ligand of Interest" by depositor).



Mol	Chain	Residues	Atoms					ZeroOcc	AltConf
			Total	C	N	O	S		
7	A	1	13	8	1	3	1	0	1
7	A	1	13	8	1	3	1	0	0

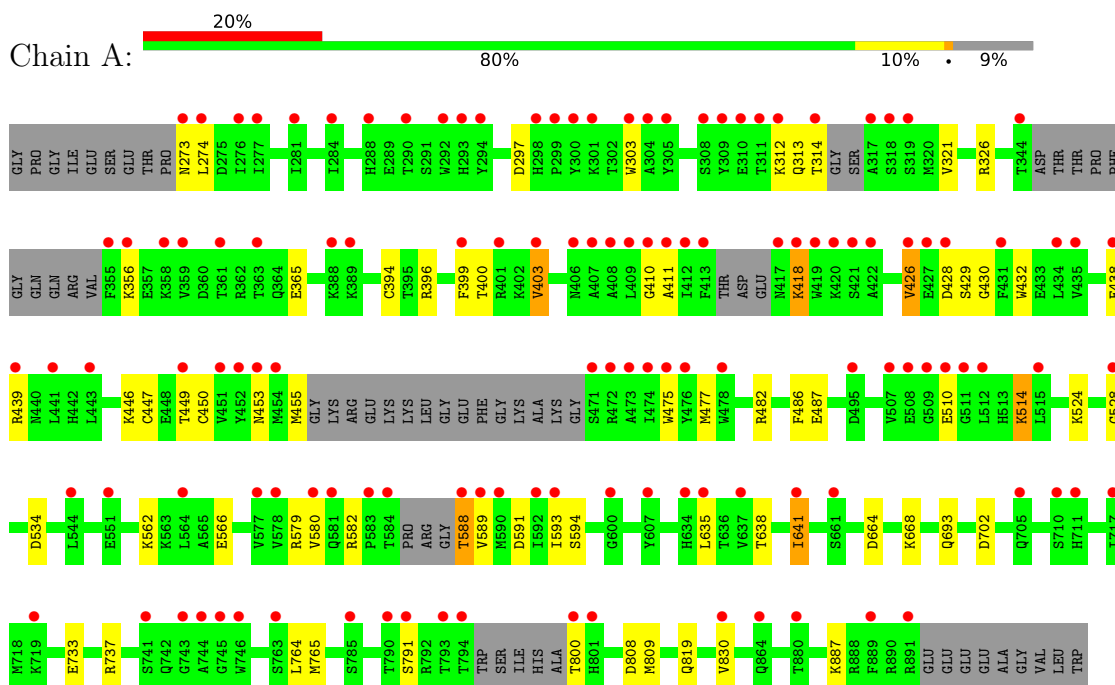
- Molecule 8 is water.

Mol	Chain	Residues	Atoms		ZeroOcc	AltConf
8	A	448	Total	O	0	0
			448	448		

3 Residue-property plots [i](#)

These plots are drawn for all protein, RNA, DNA and oligosaccharide chains in the entry. The first graphic for a chain summarises the proportions of the various outlier classes displayed in the second graphic. The second graphic shows the sequence view annotated by issues in geometry and electron density. Residues are color-coded according to the number of geometric quality criteria for which they contain at least one outlier: green = 0, yellow = 1, orange = 2 and red = 3 or more. A red dot above a residue indicates a poor fit to the electron density ($RSRZ > 2$). Stretches of 2 or more consecutive residues without any outlier are shown as a green connector. Residues present in the sample, but not in the model, are shown in grey.

- Molecule 1: Genome polyprotein



4 Data and refinement statistics

Property	Value	Source
Space group	I 2 2 2	Depositor
Cell constants a, b, c, α , β , γ	82.26Å 116.11Å 148.11Å 90.00° 90.00° 90.00°	Depositor
Resolution (Å)	91.38 – 1.66 91.38 – 1.66	Depositor EDS
% Data completeness (in resolution range)	98.3 (91.38-1.66) 98.3 (91.38-1.66)	Depositor EDS
R_{merge}	0.17	Depositor
R_{sym}	(Not available)	Depositor
$\langle I/\sigma(I) \rangle$ ¹	0.98 (at 1.66Å)	Xtrriage
Refinement program	REFMAC 5.8.0267, REFMAC5	Depositor
R, R_{free}	0.200 , 0.229 (Not available) , 0.217	Depositor DCC
R_{free} test set	4291 reflections (5.13%)	wwPDB-VP
Wilson B-factor (Å ²)	26.8	Xtrriage
Anisotropy	0.303	Xtrriage
Bulk solvent k_{sol} (e/Å ³), B_{sol} (Å ²)	0.36 , 52.4	EDS
L-test for twinning ²	$\langle L \rangle = 0.50$, $\langle L^2 \rangle = 0.34$	Xtrriage
Estimated twinning fraction	No twinning to report.	Xtrriage
F_o, F_c correlation	0.95	EDS
Total number of atoms	5335	wwPDB-VP
Average B, all atoms (Å ²)	48.0	wwPDB-VP

Xtrriage's analysis on translational NCS is as follows: *The largest off-origin peak in the Patterson function is 5.15% of the height of the origin peak. No significant pseudotranslation is detected.*

¹Intensities estimated from amplitudes.

²Theoretical values of $\langle |L| \rangle$, $\langle L^2 \rangle$ for acentric reflections are 0.5, 0.333 respectively for untwinned datasets, and 0.375, 0.2 for perfectly twinned datasets.

5 Model quality [i](#)

5.1 Standard geometry [i](#)

Bond lengths and bond angles in the following residue types are not validated in this section: PEG, A1BDG, MES, ZN, PO4, DMS

The Z score for a bond length (or angle) is the number of standard deviations the observed value is removed from the expected value. A bond length (or angle) with $|Z| > 5$ is considered an outlier worth inspection. RMSZ is the root-mean-square of all Z scores of the bond lengths (or angles).

Mol	Chain	Bond lengths		Bond angles	
		RMSZ	# Z >5	RMSZ	# Z >5
1	A	1.07	0/4905	1.34	1/6612 (0.0%)

Chiral center outliers are detected by calculating the chiral volume of a chiral center and verifying if the center is modelled as a planar moiety or with the opposite hand. A planarity outlier is detected by checking planarity of atoms in a peptide group, atoms in a mainchain group or atoms of a sidechain that are expected to be planar.

Mol	Chain	#Chirality outliers	#Planarity outliers
1	A	0	1

There are no bond length outliers.

All (1) bond angle outliers are listed below:

Mol	Chain	Res	Type	Atoms	Z	Observed($^{\circ}$)	Ideal($^{\circ}$)
1	A	702	ASP	CA-CB-CG	5.57	118.17	112.60

There are no chirality outliers.

All (1) planarity outliers are listed below:

Mol	Chain	Res	Type	Group
1	A	273	ASN	Peptide

5.2 Too-close contacts [i](#)

In the following table, the Non-H and H(model) columns list the number of non-hydrogen atoms and hydrogen atoms in the chain respectively. The H(added) column lists the number of hydrogen atoms added and optimized by MolProbity. The Clashes column lists the number of clashes within the asymmetric unit, whereas Symm-Clashes lists symmetry-related clashes.

Mol	Chain	Non-H	H(model)	H(added)	Clashes	Symm-Clashes
1	A	4799	0	4699	38	0
2	A	2	0	0	0	0
3	A	24	0	26	0	0
4	A	12	0	18	3	0
5	A	10	0	0	4	0
6	A	14	0	20	0	0
7	A	26	0	0	0	0
8	A	448	0	0	6	2
All	All	5335	0	4763	41	2

The all-atom clashscore is defined as the number of clashes found per 1000 atoms (including hydrogen atoms). The all-atom clashscore for this structure is 4.

All (41) close contacts within the same asymmetric unit are listed below, sorted by their clash magnitude.

Atom-1	Atom-2	Interatomic distance (Å)	Clash overlap (Å)
1:A:664:ASP:OD1	5:A:1007:PO4:O4	1.92	0.86
1:A:534:ASP:OD1	5:A:1007:PO4:O4	1.97	0.82
4:A:1004:DMS:H11	8:A:1317:HOH:O	1.84	0.76
1:A:664:ASP:OD1	5:A:1007:PO4:P	2.53	0.67
4:A:1004:DMS:H12	8:A:1301:HOH:O	1.96	0.66
1:A:638:THR:HA	1:A:641:ILE:HG22	1.78	0.65
1:A:733:GLU:O	1:A:737:ARG:HG3	2.06	0.56
1:A:534:ASP:OD1	5:A:1007:PO4:P	2.67	0.52
1:A:321:VAL:HG11	1:A:326:ARG:CZ	2.42	0.50
1:A:528:GLY:O	1:A:668:LYS:HE3	2.12	0.49
1:A:562:LYS:HE3	1:A:566:GLU:OE2	2.14	0.48
1:A:819:GLN:NE2	8:A:1109:HOH:O	2.34	0.48
1:A:475:TRP:CD1	1:A:475:TRP:N	2.81	0.48
1:A:453:ASN:ND2	1:A:579:ARG:HD2	2.28	0.47
1:A:400:THR:HG23	1:A:426:VAL:CG1	2.45	0.47
1:A:303:TRP:CE3	1:A:593:ILE:HD12	2.50	0.47
1:A:312:LYS:O	1:A:313:GLN:HG2	2.15	0.46
1:A:428:ASP:OD1	1:A:430:GLY:N	2.50	0.45
1:A:579:ARG:HA	1:A:591:ASP:O	2.17	0.45
1:A:809:MET:HA	1:A:809:MET:HE2	1.98	0.44
1:A:447:CYS:SG	1:A:450:CYS:HB2	2.57	0.44
1:A:638:THR:HA	1:A:641:ILE:CG2	2.44	0.44
1:A:764:LEU:HG	1:A:765:MET:CE	2.47	0.44
1:A:764:LEU:O	1:A:765:MET:HE2	2.17	0.44
1:A:439:ARG:CZ	1:A:487:GLU:OE1	2.66	0.43
1:A:313:GLN:O	1:A:314:THR:C	2.61	0.43

Continued on next page...

Continued from previous page...

Atom-1	Atom-2	Interatomic distance (Å)	Clash overlap (Å)
1:A:411:ALA:HA	1:A:477:MET:O	2.17	0.43
1:A:400:THR:O	1:A:403:VAL:HG22	2.20	0.42
1:A:582:ARG:O	1:A:588:THR:HA	2.19	0.42
1:A:399:PHE:O	1:A:403:VAL:HG13	2.20	0.42
1:A:394:CYS:HB3	1:A:486:PHE:CE2	2.56	0.41
1:A:312:LYS:O	1:A:313:GLN:CG	2.68	0.41
1:A:510:GLU:O	1:A:514:LYS:HG3	2.20	0.41
1:A:403:VAL:HG21	1:A:426:VAL:HG21	2.02	0.41
1:A:438:GLU:HG3	1:A:449:THR:OG1	2.20	0.41
1:A:764:LEU:HG	1:A:765:MET:HE3	2.02	0.41
4:A:1004:DMS:C1	8:A:1317:HOH:O	2.56	0.41
1:A:396:ARG:NH1	1:A:432:TRP:HB3	2.36	0.41
1:A:562:LYS:O	1:A:566:GLU:HG3	2.21	0.41
1:A:594:SER:OG	8:A:1101:HOH:O	2.22	0.40
1:A:524:LYS:NZ	8:A:1127:HOH:O	2.54	0.40

All (2) symmetry-related close contacts are listed below. The label for Atom-2 includes the symmetry operator and encoded unit-cell translations to be applied.

Atom-1	Atom-2	Interatomic distance (Å)	Clash overlap (Å)
8:A:1195:HOH:O	8:A:1195:HOH:O[2_445]	1.78	0.42
8:A:1276:HOH:O	8:A:1424:HOH:O[2_545]	2.03	0.17

5.3 Torsion angles [i](#)

5.3.1 Protein backbone [i](#)

In the following table, the Percentiles column shows the percent Ramachandran outliers of the chain as a percentile score with respect to all X-ray entries followed by that with respect to entries of similar resolution.

The Analysed column shows the number of residues for which the backbone conformation was analysed, and the total number of residues.

Mol	Chain	Analysed	Favoured	Allowed	Outliers	Percentiles
1	A	573/637 (90%)	546 (95%)	25 (4%)	2 (0%)	36 21

All (2) Ramachandran outliers are listed below:

Mol	Chain	Res	Type
1	A	410	GLY
1	A	418	LYS

5.3.2 Protein sidechains [i](#)

In the following table, the Percentiles column shows the percent sidechain outliers of the chain as a percentile score with respect to all X-ray entries followed by that with respect to entries of similar resolution.

The Analysed column shows the number of residues for which the sidechain conformation was analysed, and the total number of residues.

Mol	Chain	Analysed	Rotameric	Outliers	Percentiles
1	A	516/554 (93%)	493 (96%)	23 (4%)	24 5

All (23) residues with a non-rotameric sidechain are listed below:

Mol	Chain	Res	Type
1	A	274	LEU
1	A	297	ASP
1	A	356	LYS
1	A	365	GLU
1	A	403	VAL
1	A	418	LYS
1	A	426	VAL
1	A	429	SER
1	A	446	LYS
1	A	455	MET
1	A	482	ARG
1	A	514	LYS
1	A	580	VAL
1	A	588	THR
1	A	589	VAL
1	A	635	LEU
1	A	641	ILE
1	A	693	GLN
1	A	791	SER
1	A	800	THR
1	A	808	ASP
1	A	830	VAL
1	A	887	LYS

Sometimes sidechains can be flipped to improve hydrogen bonding and reduce clashes. All (4) such

sidechains are listed below:

Mol	Chain	Res	Type
1	A	273	ASN
1	A	288	HIS
1	A	645	ASN
1	A	701	ASN

5.3.3 RNA [i](#)

There are no RNA molecules in this entry.

5.4 Non-standard residues in protein, DNA, RNA chains [i](#)

There are no non-standard protein/DNA/RNA residues in this entry.

5.5 Carbohydrates [i](#)

There are no oligosaccharides in this entry.

5.6 Ligand geometry [i](#)

Of 13 ligands modelled in this entry, 2 are monoatomic - leaving 11 for Mogul analysis.

In the following table, the Counts columns list the number of bonds (or angles) for which Mogul statistics could be retrieved, the number of bonds (or angles) that are observed in the model and the number of bonds (or angles) that are defined in the Chemical Component Dictionary. The Link column lists molecule types, if any, to which the group is linked. The Z score for a bond length (or angle) is the number of standard deviations the observed value is removed from the expected value. A bond length (or angle) with $|Z| > 2$ is considered an outlier worth inspection. RMSZ is the root-mean-square of all Z scores of the bond lengths (or angles).

Mol	Type	Chain	Res	Link	Bond lengths			Bond angles		
					Counts	RMSZ	# Z > 2	Counts	RMSZ	# Z > 2
3	MES	A	1003[A]	-	12,12,12	0.71	0	15,16,16	0.58	0
5	PO4	A	1007	-	4,4,4	4.33	3 (75%)	6,6,6	0.47	0
7	A1BDG	A	1011[A]	-	13,13,13	0.16	0	16,19,19	0.60	0
4	DMS	A	1005	-	3,3,3	0.25	0	3,3,3	0.08	0
6	PEG	A	1008	-	6,6,6	0.13	0	5,5,5	0.07	0
4	DMS	A	1006	-	3,3,3	0.16	0	3,3,3	0.30	0
6	PEG	A	1010	-	6,6,6	0.17	0	5,5,5	0.07	0
5	PO4	A	1009	-	4,4,4	1.05	1 (25%)	6,6,6	0.48	0
7	A1BDG	A	1012	-	13,13,13	0.29	0	16,19,19	0.53	0

Mol	Type	Chain	Res	Link	Bond lengths			Bond angles		
					Counts	RMSZ	# Z > 2	Counts	RMSZ	# Z > 2
3	MES	A	1003[B]	-	12,12,12	0.70	0	15,16,16	0.28	0
4	DMS	A	1004	-	3,3,3	0.64	0	3,3,3	0.47	0

In the following table, the Chirals column lists the number of chiral outliers, the number of chiral centers analysed, the number of these observed in the model and the number defined in the Chemical Component Dictionary. Similar counts are reported in the Torsion and Rings columns. '2' means no outliers of that kind were identified.

Mol	Type	Chain	Res	Link	Chirals	Torsions	Rings
3	MES	A	1003[A]	-	-	0/6/14/14	0/1/1/1
7	A1BDG	A	1011[A]	-	-	7/8/22/22	0/1/1/1
6	PEG	A	1008	-	-	2/4/4/4	-
7	A1BDG	A	1012	-	-	1/8/22/22	0/1/1/1
3	MES	A	1003[B]	-	-	5/6/14/14	0/1/1/1
6	PEG	A	1010	-	-	2/4/4/4	-

All (4) bond length outliers are listed below:

Mol	Chain	Res	Type	Atoms	Z	Observed(Å)	Ideal(Å)
5	A	1007	PO4	P-O1	6.85	1.66	1.50
5	A	1007	PO4	P-O2	4.46	1.67	1.54
5	A	1007	PO4	P-O4	-2.23	1.48	1.54
5	A	1009	PO4	P-O1	2.02	1.55	1.50

There are no bond angle outliers.

There are no chirality outliers.

All (17) torsion outliers are listed below:

Mol	Chain	Res	Type	Atoms
3	A	1003[B]	MES	C8-C7-N4-C3
3	A	1003[B]	MES	C7-C8-S-O1S
7	A	1011[A]	A1BDG	C1-N-S-C2
7	A	1011[A]	A1BDG	C1-N-S-O1
7	A	1011[A]	A1BDG	C3-N-S-C2
7	A	1011[A]	A1BDG	C3-N-S-O1
7	A	1011[A]	A1BDG	C3-N-S-O2
7	A	1011[A]	A1BDG	O-C-C1-C7
7	A	1011[A]	A1BDG	O-C-C1-N
3	A	1003[B]	MES	C7-C8-S-O3S
6	A	1010	PEG	O2-C3-C4-O4

Continued on next page...

Continued from previous page...

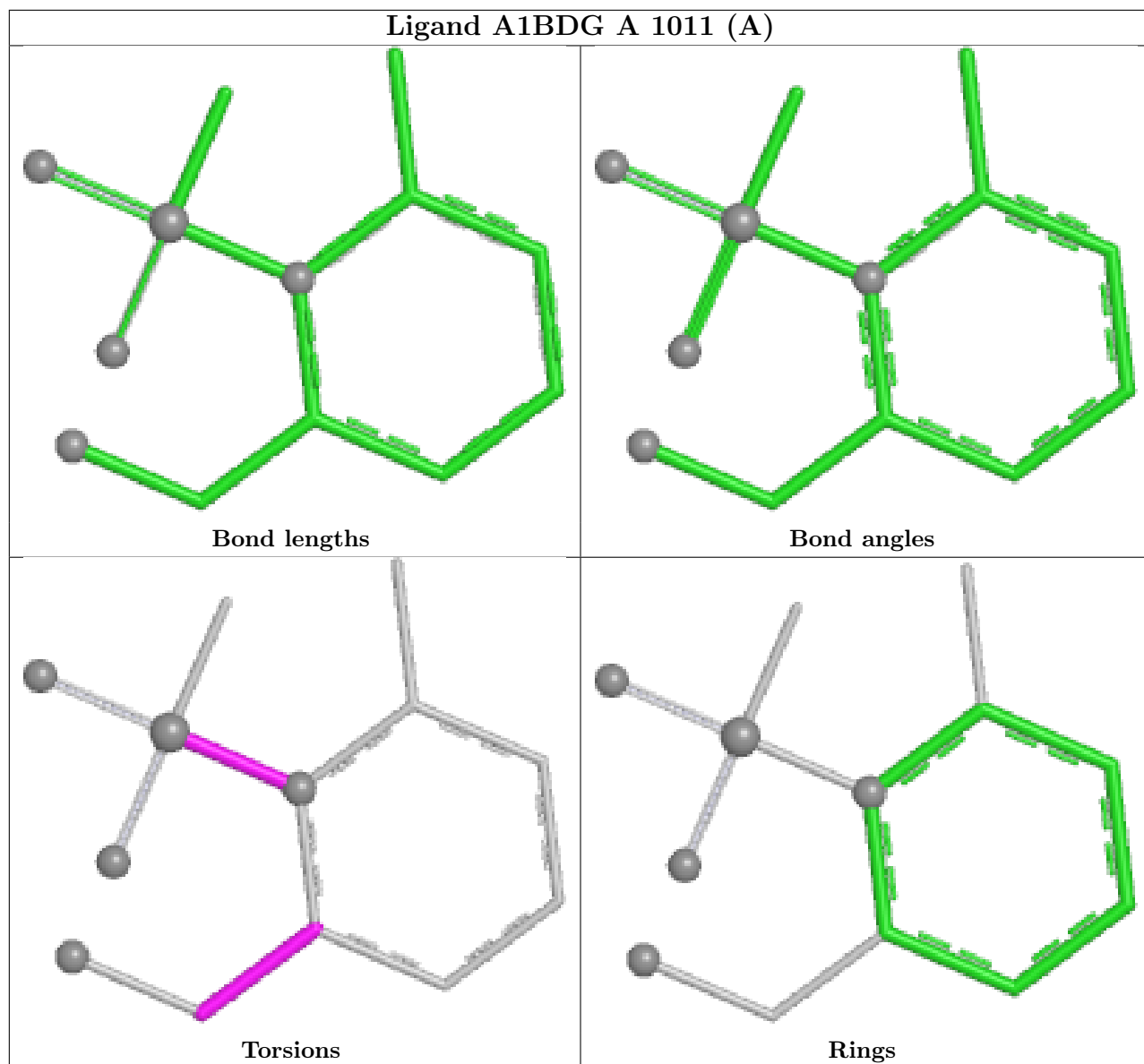
Mol	Chain	Res	Type	Atoms
3	A	1003[B]	MES	C8-C7-N4-C5
7	A	1012	A1BDG	O-C-C1-N
3	A	1003[B]	MES	C7-C8-S-O2S
6	A	1008	PEG	O2-C3-C4-O4
6	A	1008	PEG	C1-C2-O2-C3
6	A	1010	PEG	C4-C3-O2-C2

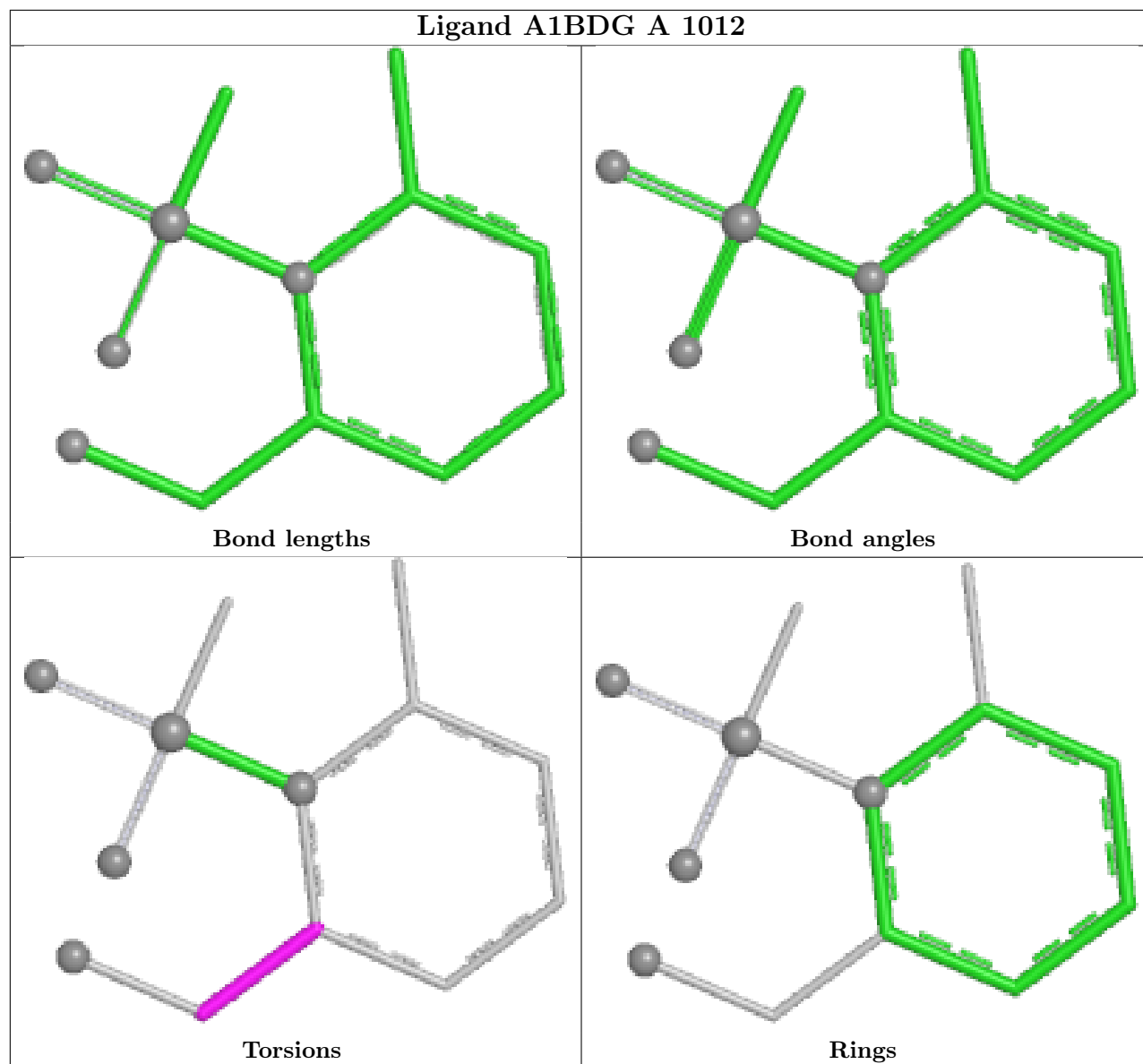
There are no ring outliers.

2 monomers are involved in 7 short contacts:

Mol	Chain	Res	Type	Clashes	Symm-Clashes
5	A	1007	PO4	4	0
4	A	1004	DMS	3	0

The following is a two-dimensional graphical depiction of Mogul quality analysis of bond lengths, bond angles, torsion angles, and ring geometry for all instances of the Ligand of Interest. In addition, ligands with molecular weight > 250 and outliers as shown on the validation Tables will also be included. For torsion angles, if less than 5% of the Mogul distribution of torsion angles is within 10 degrees of the torsion angle in question, then that torsion angle is considered an outlier. Any bond that is central to one or more torsion angles identified as an outlier by Mogul will be highlighted in the graph. For rings, the root-mean-square deviation (RMSD) between the ring in question and similar rings identified by Mogul is calculated over all ring torsion angles. If the average RMSD is greater than 60 degrees and the minimal RMSD between the ring in question and any Mogul-identified rings is also greater than 60 degrees, then that ring is considered an outlier. The outliers are highlighted in purple. The color gray indicates Mogul did not find sufficient equivalents in the CSD to analyse the geometry.





5.7 Other polymers [i](#)

There are no such residues in this entry.

5.8 Polymer linkage issues [i](#)

There are no chain breaks in this entry.

6 Fit of model and data

6.1 Protein, DNA and RNA chains

In the following table, the column labelled ‘#RSRZ> 2’ contains the number (and percentage) of RSRZ outliers, followed by percent RSRZ outliers for the chain as percentile scores relative to all X-ray entries and entries of similar resolution. The OWAB column contains the minimum, median, 95th percentile and maximum values of the occupancy-weighted average B-factor per residue. The column labelled ‘Q< 0.9’ lists the number of (and percentage) of residues with an average occupancy less than 0.9.

Mol	Chain	Analysed	<RSRZ>	#RSRZ>2	OWAB(Å ²)	Q<0.9
1	A	581/637 (91%)	1.28	128 (22%) 2 3	5, 36, 105, 146	23 (3%)

All (128) RSRZ outliers are listed below:

Mol	Chain	Res	Type	RSRZ
1	A	512	LEU	14.7
1	A	719[A]	LYS	13.5
1	A	800	THR	12.8
1	A	515	LEU	12.2
1	A	507	VAL	11.3
1	A	511	GLY	10.7
1	A	607	TYR	10.3
1	A	741[A]	SER	10.1
1	A	388	LYS	9.1
1	A	763[A]	SER	8.8
1	A	801	HIS	8.8
1	A	509	GLY	8.6
1	A	864[A]	GLN	8.5
1	A	551[A]	GLU	8.5
1	A	785[A]	SER	8.4
1	A	389	LYS	8.0
1	A	711	HIS	7.9
1	A	710	SER	7.9
1	A	705	GLN	7.5
1	A	495	ASP	7.0
1	A	661	SER	7.0
1	A	359	VAL	6.6
1	A	413	PHE	6.4
1	A	589	VAL	6.2
1	A	355	PHE	6.0
1	A	409	LEU	5.7
1	A	510	GLU	5.3

Continued on next page...

Continued from previous page...

Mol	Chain	Res	Type	RSRZ
1	A	508	GLU	5.0
1	A	317	ALA	5.0
1	A	600	GLY	5.0
1	A	475	TRP	4.9
1	A	794	THR	4.5
1	A	407	ALA	4.4
1	A	411	ALA	4.3
1	A	435	VAL	4.2
1	A	412	ILE	4.2
1	A	419	TRP	4.1
1	A	363	THR	4.0
1	A	274	LEU	4.0
1	A	298	HIS	3.9
1	A	292	TRP	3.9
1	A	426	VAL	3.9
1	A	745	GLY	3.8
1	A	284	ILE	3.8
1	A	294	TYR	3.8
1	A	422	ALA	3.7
1	A	281	ILE	3.7
1	A	293	HIS	3.7
1	A	290	THR	3.6
1	A	356	LYS	3.6
1	A	476	TYR	3.5
1	A	305	TYR	3.5
1	A	309	TYR	3.5
1	A	637	VAL	3.4
1	A	793	THR	3.4
1	A	314	THR	3.4
1	A	344	THR	3.3
1	A	635	LEU	3.3
1	A	791	SER	3.2
1	A	473	ALA	3.2
1	A	593	ILE	3.2
1	A	454	MET	3.2
1	A	584	THR	3.2
1	A	431	PHE	3.2
1	A	417	ASN	3.1
1	A	403	VAL	3.0
1	A	361	THR	3.0
1	A	583	PRO	3.0
1	A	641	ILE	3.0

Continued on next page...

Continued from previous page...

Mol	Chain	Res	Type	RSRZ
1	A	880	THR	3.0
1	A	358	LYS	3.0
1	A	438	GLU	2.9
1	A	528	GLY	2.9
1	A	746	TRP	2.9
1	A	418	LYS	2.9
1	A	580	VAL	2.9
1	A	434	LEU	2.9
1	A	443	LEU	2.8
1	A	744	ALA	2.8
1	A	478	TRP	2.8
1	A	308	SER	2.8
1	A	590	MET	2.7
1	A	304	ALA	2.7
1	A	273	ASN	2.7
1	A	303	TRP	2.7
1	A	790	THR	2.7
1	A	410	GLY	2.7
1	A	401	ARG	2.6
1	A	588	THR	2.6
1	A	472	ARG	2.6
1	A	474	ILE	2.6
1	A	319	SER	2.6
1	A	311	THR	2.6
1	A	399	PHE	2.6
1	A	577	VAL	2.5
1	A	717	ILE	2.5
1	A	288	HIS	2.5
1	A	300	TYR	2.5
1	A	471	SER	2.5
1	A	578	VAL	2.5
1	A	301	LYS	2.4
1	A	428	ASP	2.4
1	A	277	ILE	2.4
1	A	592	ILE	2.4
1	A	743	GLY	2.3
1	A	439	ARG	2.3
1	A	889	PHE	2.3
1	A	452	TYR	2.3
1	A	634	HIS	2.3
1	A	276	ILE	2.3
1	A	449	THR	2.3

Continued on next page...

Continued from previous page...

Mol	Chain	Res	Type	RSRZ
1	A	453	ASN	2.2
1	A	891	ARG	2.2
1	A	427	GLU	2.1
1	A	406	ASN	2.1
1	A	312	LYS	2.1
1	A	564	LEU	2.1
1	A	310	GLU	2.1
1	A	421	SER	2.1
1	A	299	PRO	2.1
1	A	420	LYS	2.1
1	A	408	ALA	2.0
1	A	318	SER	2.0
1	A	441	LEU	2.0
1	A	544	LEU	2.0
1	A	581	GLN	2.0
1	A	451	VAL	2.0
1	A	830	VAL	2.0

6.2 Non-standard residues in protein, DNA, RNA chains [i](#)

There are no non-standard protein/DNA/RNA residues in this entry.

6.3 Carbohydrates [i](#)

There are no oligosaccharides in this entry.

6.4 Ligands [i](#)

In the following table, the Atoms column lists the number of modelled atoms in the group and the number defined in the chemical component dictionary. The B-factors column lists the minimum, median, 95th percentile and maximum values of B factors of atoms in the group. The column labelled 'Q< 0.9' lists the number of atoms with occupancy less than 0.9.

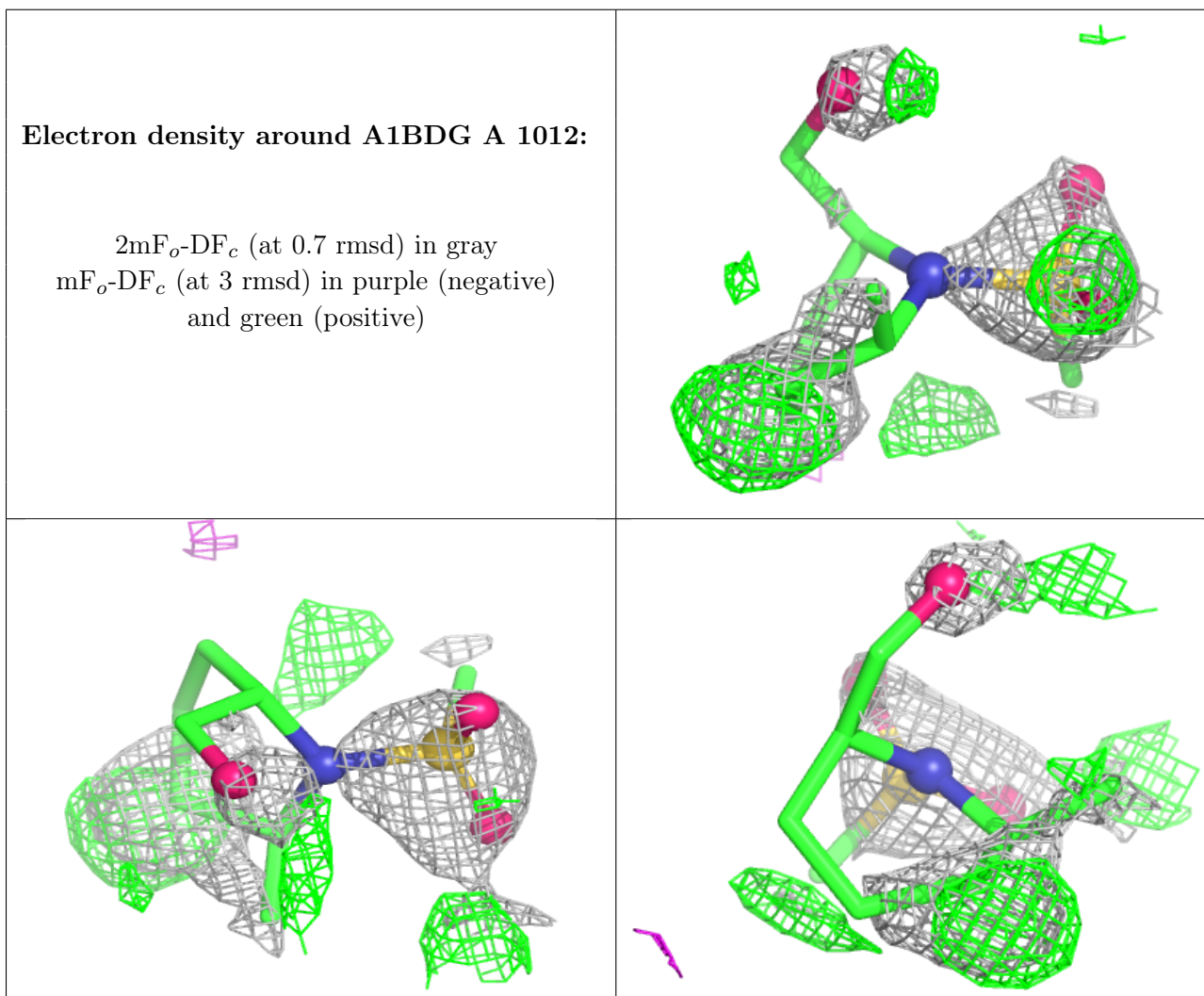
Mol	Type	Chain	Res	Atoms	RSCC	RSR	B-factors(Å ²)	Q<0.9
5	PO4	A	1009	5/5	0.62	0.16	64,73,79,93	0
7	A1BDG	A	1012	13/13	0.64	0.35	46,49,51,52	13
6	PEG	A	1008	7/7	0.71	0.35	101,106,109,110	7
5	PO4	A	1007	5/5	0.73	0.16	33,34,51,53	0
7	A1BDG	A	1011[A]	13/13	0.75	0.42	40,42,46,47	13
6	PEG	A	1010	7/7	0.82	0.17	55,65,68,69	0

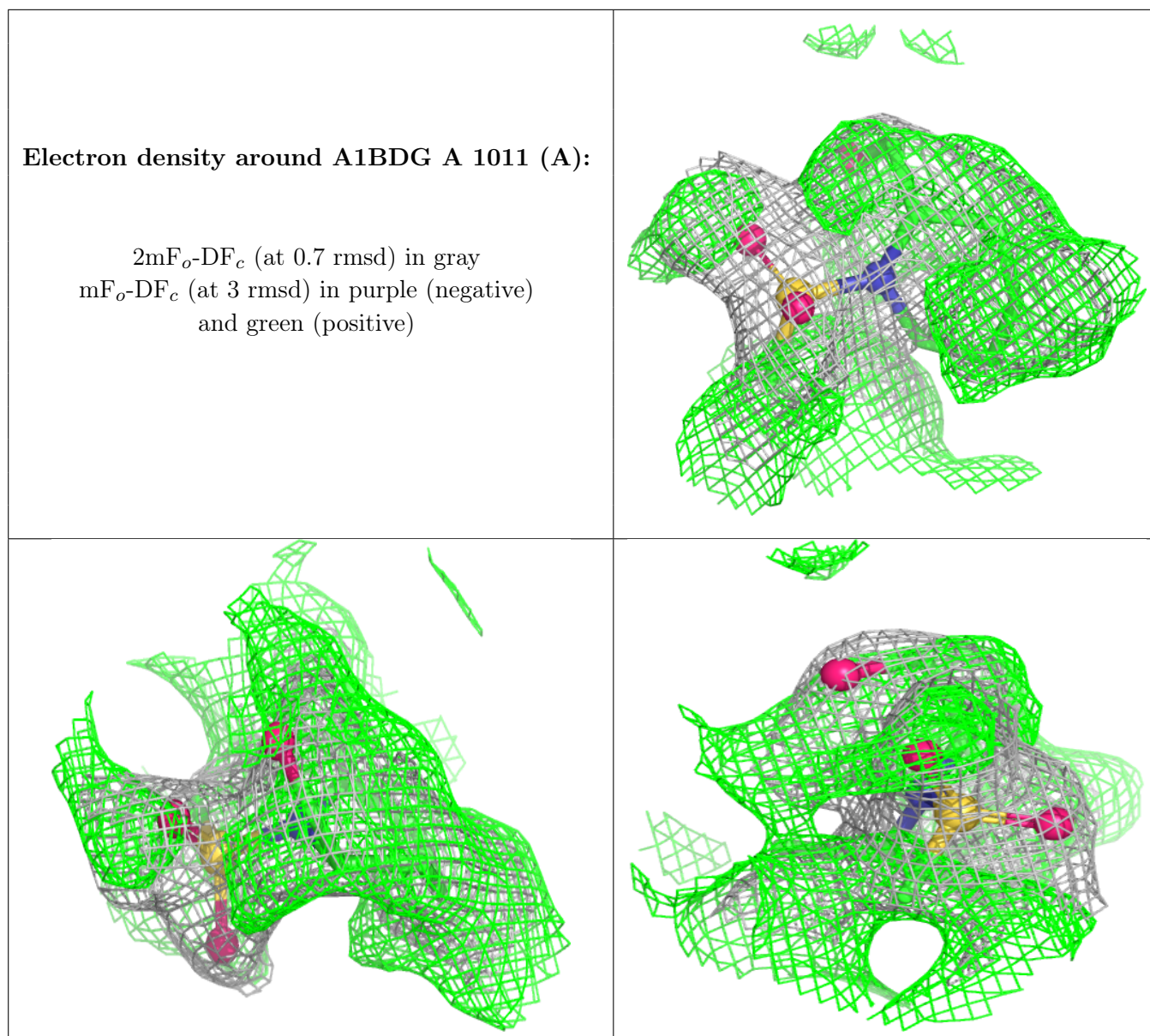
Continued on next page...

Continued from previous page...

Mol	Type	Chain	Res	Atoms	RSCC	RSR	B-factors(Å ²)	Q<0.9
4	DMS	A	1005	4/4	0.85	0.21	69,80,87,92	0
4	DMS	A	1004	4/4	0.95	0.11	33,36,36,38	0
4	DMS	A	1006	4/4	0.95	0.12	43,52,52,53	0
3	MES	A	1003[B]	12/12	0.98	0.35	625,651,699,702	12
3	MES	A	1003[A]	12/12	0.98	0.35	19,23,24,24	12
2	ZN	A	1002	1/1	0.99	0.06	50,50,50,50	0
2	ZN	A	1001	1/1	1.00	0.02	20,20,20,20	0

The following is a graphical depiction of the model fit to experimental electron density of all instances of the Ligand of Interest. In addition, ligands with molecular weight > 250 and outliers as shown on the geometry validation Tables will also be included. Each fit is shown from different orientation to approximate a three-dimensional view.





6.5 Other polymers [i](#)

There are no such residues in this entry.