



# wwPDB X-ray Structure Validation Summary Report

Apr 15, 2026 – 11:27 AM UTC

PDB ID : 1HBN / pdb\_00001hbn  
Title : METHYL-COENZYME M REDUCTASE  
Authors : Ermler, U.; Grabarse, W.  
Deposited on : 2001-04-20  
Resolution : 1.16 Å(reported)

This is a wwPDB X-ray Structure Validation Summary Report for a publicly released PDB entry.

We welcome your comments at [validation@mail.wwpdb.org](mailto:validation@mail.wwpdb.org)

A user guide is available at

<https://www.wwpdb.org/validation/2017/XrayValidationReportHelp>

with specific help available everywhere you see the  symbol.

The types of validation reports are described at

<https://www.wwpdb.org/validation/2017/FAQs#types>.

---

The following versions of software and data (see [references](#) ) were used in the production of this report:

MolProbity : **FAILED**  
Mogul : 2022.3.0, CSD as543be (2022)  
Xtrriage (Phenix) : **NOT EXECUTED**  
EDS : **NOT EXECUTED**  
Buster-report : wwPDB partial adaption of 1.1.7 (2018)  
Percentile statistics : 20250101.v01 (using entries in the PDB archive January 1st 2025)  
Ideal geometry (proteins) : Engh & Huber (2001)  
Ideal geometry (DNA, RNA) : Parkinson et al. (1996)  
Validation Pipeline (wwPDB-VP) : 2.49

# 1 Overall quality at a glance

The following experimental techniques were used to determine the structure:

*X-RAY DIFFRACTION*

The reported resolution of this entry is 1.16 Å.

There are no overall percentile quality scores available for this entry.

MolProbity failed to run properly; EDS was not executed - the sequence quality summary graphics cannot be shown.

The following table lists non-polymeric compounds, carbohydrate monomers and non-standard residues in protein, DNA, RNA chains that are outliers for geometric or electron-density-fit criteria:

Mol	Type	Chain	Res	Chirality	Geometry	Clashes	Electron density
7	GOL	D	1556	-	X	-	-

## 2 Entry composition

There are 12 unique types of molecules in this entry. The entry contains 21958 atoms, of which 0 are hydrogens and 0 are deuteriums.

In the tables below, the ZeroOcc column contains the number of atoms modelled with zero occupancy, the AltConf column contains the number of residues with at least one atom in alternate conformation and the Trace column contains the number of residues modelled with at most 2 atoms.

- Molecule 1 is a protein called METHYL-COENZYME M REDUCTASE I ALPHA SUB-UNIT.

Mol	Chain	Residues	Atoms					ZeroOcc	AltConf	Trace
			Total	C	N	O	S			
1	A	548	4291	2712	723	836	20	23	13	0
1	D	548	4296	2717	721	838	20	23	16	0

There are 10 discrepancies between the modelled and reference sequences:

Chain	Residue	Modelled	Actual	Comment	Reference
A	257	MHS	HIS	modified residue	UNP P11558
A	271	AGM	ARG	modified residue	UNP P11558
A	400	MGN	GLN	modified residue	UNP P11558
A	445	GL3	GLY	modified residue	UNP P11558
A	452	SMC	CYS	modified residue	UNP P11558
D	257	MHS	HIS	modified residue	UNP P11558
D	271	AGM	ARG	modified residue	UNP P11558
D	400	MGN	GLN	modified residue	UNP P11558
D	445	GL3	GLY	modified residue	UNP P11558
D	452	SMC	CYS	modified residue	UNP P11558

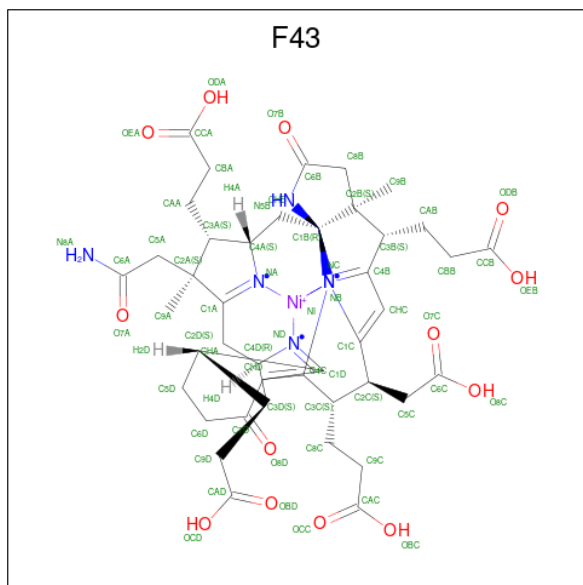
- Molecule 2 is a protein called METHYL-COENZYME M REDUCTASE I BETA SUBUNIT.

Mol	Chain	Residues	Atoms					ZeroOcc	AltConf	Trace
			Total	C	N	O	S			
2	B	442	3348	2115	557	654	22	26	15	0
2	E	442	3340	2115	551	653	21	41	12	0

- Molecule 3 is a protein called METHYL-COENZYME M REDUCTASE I GAMMA SUB-UNIT.

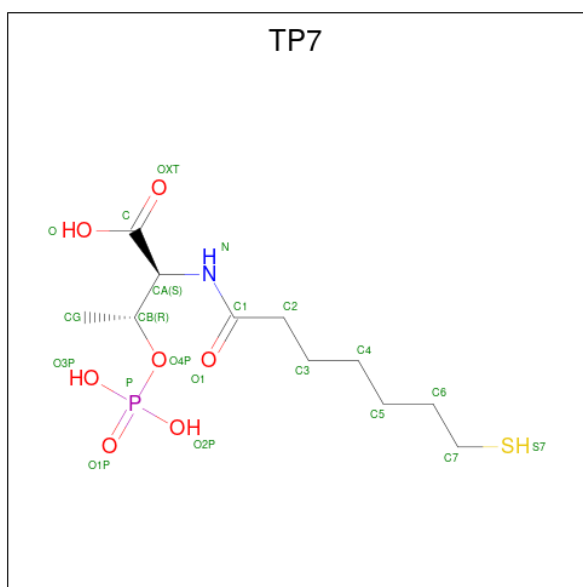
Mol	Chain	Residues	Atoms					ZeroOcc	AltConf	Trace
			Total	C	N	O	S			
3	C	247	Total 2007	1242	355	398	12	39	5	0
3	F	247	Total 2006	1242	354	398	12	44	5	0

- Molecule 4 is FACTOR 430 (CCD ID: F43) (formula:  $C_{42}H_{51}N_6NiO_{13}$ ).



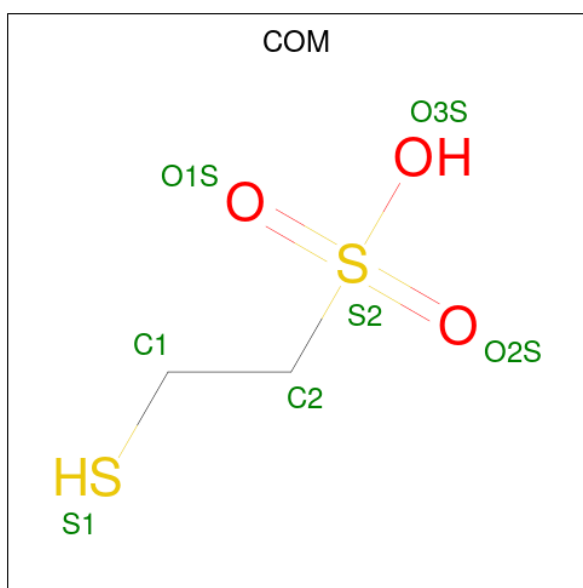
Mol	Chain	Residues	Atoms					ZeroOcc	AltConf
			Total	C	N	Ni	O		
4	A	1	Total 62	42	6	1	13	0	0
4	D	1	Total 62	42	6	1	13	0	0

- Molecule 5 is Coenzyme B (CCD ID: TP7) (formula:  $C_{11}H_{22}NO_7PS$ ).



Mol	Chain	Residues	Atoms					ZeroOcc	AltConf	
			Total	C	N	O	P			S
5	A	1	Total	C	N	O	P	S	0	0
			21	11	1	7	1	1		
5	D	1	Total	C	N	O	P	S	0	0
			21	11	1	7	1	1		

- Molecule 6 is 1-THIOETHANESULFONIC ACID (CCD ID: COM) (formula:  $C_2H_6O_3S_2$ ).



Mol	Chain	Residues	Atoms			ZeroOcc	AltConf	
			Total	C	O			S
6	A	1	Total	C	O	S	0	0
			7	2	3	2		
6	D	1	Total	C	O	S	0	0
			7	2	3	2		

- Molecule 7 is GLYCEROL (CCD ID: GOL) (formula:  $C_3H_8O_3$ ).



Mol	Chain	Residues	Atoms	ZeroOcc	AltConf
7	A	1	Total C O 6 3 3	0	0
7	A	1	Total C O 6 3 3	0	0
7	A	1	Total C O 6 3 3	0	0
7	A	1	Total C O 6 3 3	0	0
7	B	1	Total C O 6 3 3	0	0
7	C	1	Total C O 6 3 3	0	0
7	D	1	Total C O 6 3 3	0	0
7	D	1	Total C O 6 3 3	0	0
7	D	1	Total C O 6 3 3	0	0
7	D	1	Total C O 6 3 3	0	0
7	E	1	Total C O 6 3 3	0	0

- Molecule 8 is ZINC ION (CCD ID: ZN) (formula: Zn).

Mol	Chain	Residues	Atoms	ZeroOcc	AltConf
8	A	1	Total Zn 1 1	0	1

- Molecule 9 is MAGNESIUM ION (CCD ID: MG) (formula: Mg).

Mol	Chain	Residues	Atoms	ZeroOcc	AltConf
9	A	5	Total Mg 5 5	0	0
9	B	2	Total Mg 2 2	0	0
9	C	2	Total Mg 2 2	0	0
9	D	2	Total Mg 2 2	0	0
9	E	5	Total Mg 5 5	0	0
9	F	2	Total Mg 2 2	0	0

- Molecule 10 is SODIUM ION (CCD ID: NA) (formula: Na).

Mol	Chain	Residues	Atoms	ZeroOcc	AltConf
10	A	5	Total Na 5 5	0	0
10	B	2	Total Na 2 2	0	0
10	D	3	Total Na 3 3	0	0

- Molecule 11 is CHLORIDE ION (CCD ID: CL) (formula: Cl).

Mol	Chain	Residues	Atoms	ZeroOcc	AltConf
11	B	1	Total Cl 1 1	0	0
11	E	1	Total Cl 1 1	0	0

- Molecule 12 is water.

Mol	Chain	Residues	Atoms	ZeroOcc	AltConf
12	A	489	Total O 489 489	0	29

*Continued on next page...*

*Continued from previous page...*

<b>Mol</b>	<b>Chain</b>	<b>Residues</b>	<b>Atoms</b>		<b>ZeroOcc</b>	<b>AltConf</b>
12	B	423	Total 423	O 423	0	31
12	C	294	Total 294	O 294	0	25
12	D	510	Total 510	O 510	0	37
12	E	402	Total 402	O 402	0	33
12	F	275	Total 275	O 275	0	15

MolProbity failed to run properly; EDS was not executed - this section is therefore empty.

### 3 Data and refinement statistics

Xtrriage (Phenix) and EDS were not executed - this section is therefore incomplete.

Property	Value	Source
Space group	P 1 21 1	Depositor
Cell constants a, b, c, $\alpha$ , $\beta$ , $\gamma$	81.72Å 116.88Å 122.58Å 90.00° 92.02° 90.00°	Depositor
Resolution (Å)	30.00 – 1.16	Depositor
% Data completeness (in resolution range)	93.1 (30.00-1.16)	Depositor
$R_{merge}$	0.07	Depositor
$R_{sym}$	0.07	Depositor
Refinement program	REFMAC	Depositor
R, $R_{free}$	0.124 , 0.190	Depositor
Estimated twinning fraction	No twinning to report.	Xtrriage
Total number of atoms	21958	wwPDB-VP
Average B, all atoms (Å <sup>2</sup> )	18.0	wwPDB-VP

## 4 Model quality [i](#)

### 4.1 Standard geometry [i](#)

MolProbity failed to run properly - this section is therefore empty.

### 4.2 Too-close contacts [i](#)

MolProbity failed to run properly - this section is therefore empty.

### 4.3 Torsion angles [i](#)

#### 4.3.1 Protein backbone [i](#)

MolProbity failed to run properly - this section is therefore empty.

#### 4.3.2 Protein sidechains [i](#)

MolProbity failed to run properly - this section is therefore empty.

#### 4.3.3 RNA [i](#)

MolProbity failed to run properly - this section is therefore empty.

### 4.4 Non-standard residues in protein, DNA, RNA chains [i](#)

10 non-standard protein/DNA/RNA residues are modelled in this entry.

In the following table, the Counts columns list the number of bonds (or angles) for which Mogul statistics could be retrieved, the number of bonds (or angles) that are observed in the model and the number of bonds (or angles) that are defined in the Chemical Component Dictionary. The Link column lists molecule types, if any, to which the group is linked. The Z score for a bond length (or angle) is the number of standard deviations the observed value is removed from the expected value. A bond length (or angle) with  $|Z| > 2$  is considered an outlier worth inspection. RMSZ is the root-mean-square of all Z scores of the bond lengths (or angles).

Mol	Type	Chain	Res	Link	Bond lengths			Bond angles		
					Counts	RMSZ	$\# Z  > 2$	Counts	RMSZ	$\# Z  > 2$
1	AGM	A	271	1	10,11,12	0.76	0	7,13,15	0.96	0
1	MGN	D	400	1	6,9,10	1.23	1 (16%)	7,12,14	0.60	0
1	MHS	D	257	1	10,11,12	1.54	1 (10%)	5,14,16	4.63	2 (40%)
1	AGM	D	271	1	10,11,12	0.92	0	7,13,15	0.95	0

Mol	Type	Chain	Res	Link	Bond lengths			Bond angles		
					Counts	RMSZ	# Z  > 2	Counts	RMSZ	# Z  > 2
1	GL3	A	445	1	2,3,4	2.04	1 (50%)	1,2,4	0.06	0
1	GL3	D	445	1	2,3,4	2.60	1 (50%)	1,2,4	0.25	0
1	SMC	A	452	1	5,6,7	0.63	0	3,6,8	0.88	0
1	SMC	D	452	1	5,6,7	0.78	0	3,6,8	1.32	0
1	MHS	A	257	1	10,11,12	1.68	1 (10%)	5,14,16	2.57	2 (40%)
1	MGN	A	400	1	6,9,10	0.73	0	7,12,14	0.77	0

In the following table, the Chirals column lists the number of chiral outliers, the number of chiral centers analysed, the number of these observed in the model and the number defined in the Chemical Component Dictionary. Similar counts are reported in the Torsion and Rings columns. '-' means no outliers of that kind were identified.

Mol	Type	Chain	Res	Link	Chirals	Torsions	Rings
1	AGM	A	271	1	-	2/10/11/13	-
1	MGN	D	400	1	-	0/7/9/12	-
1	MHS	D	257	1	-	0/5/6/8	0/1/1/1
1	AGM	D	271	1	-	3/10/11/13	-
1	GL3	A	445	1	-	1/1/1/2	-
1	GL3	D	445	1	-	1/1/1/2	-
1	SMC	A	452	1	-	1/3/5/7	-
1	SMC	D	452	1	-	1/3/5/7	-
1	MHS	A	257	1	-	0/5/6/8	0/1/1/1
1	MGN	A	400	1	-	0/7/9/12	-

All (5) bond length outliers are listed below:

Mol	Chain	Res	Type	Atoms	Z	Observed(Å)	Ideal(Å)
1	A	257	MHS	CM-ND1	4.50	1.55	1.46
1	D	257	MHS	CM-ND1	4.08	1.54	1.46
1	D	445	GL3	C-S	-3.67	1.65	1.80
1	A	445	GL3	C-S	-2.86	1.68	1.80
1	D	400	MGN	CB1-CA	-2.37	1.52	1.55

All (4) bond angle outliers are listed below:

Mol	Chain	Res	Type	Atoms	Z	Observed(°)	Ideal(°)
1	D	257	MHS	ND1-CE1-NE2	-9.47	107.30	112.94
1	A	257	MHS	ND1-CE1-NE2	-4.75	110.11	112.94
1	D	257	MHS	CD2-NE2-CE1	3.94	110.40	105.24
1	A	257	MHS	CD2-NE2-CE1	2.82	108.93	105.24

There are no chirality outliers.

5 of 9 torsion outliers are listed below:

Mol	Chain	Res	Type	Atoms
1	D	452	SMC	CA-CB-SG-CS
1	A	452	SMC	CA-CB-SG-CS
1	A	445	GL3	S-C-CA-N
1	D	445	GL3	S-C-CA-N
1	A	271	AGM	CE2-CD-NE1-CZ

There are no ring outliers.

No monomer is involved in short contacts.

## 4.5 Carbohydrates [i](#)

There are no oligosaccharides in this entry.

## 4.6 Ligand geometry [i](#)

Of 48 ligands modelled in this entry, 31 are monoatomic - leaving 17 for Mogul analysis.

In the following table, the Counts columns list the number of bonds (or angles) for which Mogul statistics could be retrieved, the number of bonds (or angles) that are observed in the model and the number of bonds (or angles) that are defined in the Chemical Component Dictionary. The Link column lists molecule types, if any, to which the group is linked. The Z score for a bond length (or angle) is the number of standard deviations the observed value is removed from the expected value. A bond length (or angle) with  $|Z| > 2$  is considered an outlier worth inspection. RMSZ is the root-mean-square of all Z scores of the bond lengths (or angles).

Mol	Type	Chain	Res	Link	Bond lengths			Bond angles		
					Counts	RMSZ	# Z  > 2	Counts	RMSZ	# Z  > 2
7	GOL	A	1554	-	5,5,5	0.65	0	5,5,5	1.38	1 (20%)
6	COM	D	1552	4	6,6,6	1.35	1 (16%)	8,8,8	0.48	0
5	TP7	A	1551	-	19,20,20	1.54	3 (15%)	24,26,26	1.12	2 (8%)
4	F43	D	1550	1,6	63,71,71	2.55	14 (22%)	73,118,118	1.46	17 (23%)
6	COM	A	1552	4	6,6,6	1.43	2 (33%)	8,8,8	0.92	0
7	GOL	D	1553	-	5,5,5	0.81	0	5,5,5	0.90	0
7	GOL	D	1554	10	5,5,5	0.59	0	5,5,5	0.63	0
7	GOL	B	1444	-	5,5,5	1.24	1 (20%)	5,5,5	1.35	1 (20%)
7	GOL	C	1249	-	5,5,5	0.51	0	5,5,5	0.42	0
7	GOL	A	1555	-	5,5,5	0.91	0	5,5,5	1.06	0
7	GOL	A	1556	-	5,5,5	1.08	0	5,5,5	1.08	1 (20%)

Mol	Type	Chain	Res	Link	Bond lengths			Bond angles		
					Counts	RMSZ	# Z  > 2	Counts	RMSZ	# Z  > 2
7	GOL	D	1556	-	5,5,5	1.10	1 (20%)	5,5,5	1.80	2 (40%)
7	GOL	E	1444	-	5,5,5	0.85	0	5,5,5	0.92	0
4	F43	A	1550	1,6	63,71,71	2.18	14 (22%)	73,118,118	1.64	14 (19%)
7	GOL	A	1553	10	5,5,5	0.37	0	5,5,5	2.11	2 (40%)
5	TP7	D	1551	-	19,20,20	1.83	5 (26%)	24,26,26	1.11	2 (8%)
7	GOL	D	1555	-	5,5,5	0.69	0	5,5,5	1.04	0

In the following table, the Chirals column lists the number of chiral outliers, the number of chiral centers analysed, the number of these observed in the model and the number defined in the Chemical Component Dictionary. Similar counts are reported in the Torsion and Rings columns. '-' means no outliers of that kind were identified.

Mol	Type	Chain	Res	Link	Chirals	Torsions	Rings
7	GOL	A	1554	-	-	0/4/4/4	-
6	COM	D	1552	4	-	0/4/4/4	-
5	TP7	A	1551	-	-	0/24/24/24	-
4	F43	D	1550	1,6	-	10/28/185/185	-
6	COM	A	1552	4	-	0/4/4/4	-
7	GOL	D	1553	-	-	0/4/4/4	-
7	GOL	D	1554	10	-	0/4/4/4	-
7	GOL	B	1444	-	-	2/4/4/4	-
7	GOL	C	1249	-	-	0/4/4/4	-
7	GOL	A	1555	-	-	2/4/4/4	-
7	GOL	A	1556	-	-	0/4/4/4	-
7	GOL	D	1556	-	-	4/4/4/4	-
7	GOL	E	1444	-	-	0/4/4/4	-
4	F43	A	1550	1,6	-	10/28/185/185	-
7	GOL	A	1553	10	-	2/4/4/4	-
5	TP7	D	1551	-	-	0/24/24/24	-
7	GOL	D	1555	-	-	0/4/4/4	-

The worst 5 of 41 bond length outliers are listed below:

Mol	Chain	Res	Type	Atoms	Z	Observed(Å)	Ideal(Å)
4	D	1550	F43	NI-NA	11.45	2.17	1.89
4	D	1550	F43	NI-NB	10.06	2.13	1.89
4	A	1550	F43	NI-NA	8.86	2.10	1.89
4	A	1550	F43	NI-NB	7.64	2.07	1.89
4	D	1550	F43	NI-ND	6.53	2.05	1.89

The worst 5 of 42 bond angle outliers are listed below:

Mol	Chain	Res	Type	Atoms	Z	Observed(°)	Ideal(°)
4	A	1550	F43	C3D-C4D-ND	5.03	110.16	102.34
4	A	1550	F43	C5D-C2D-C1D	4.94	116.88	110.43
4	A	1550	F43	CAB-C3B-C2B	-3.79	110.64	119.00
4	D	1550	F43	CAB-C3B-C2B	-3.59	111.08	119.00
4	D	1550	F43	C3B-C4B-CHC	-3.58	115.72	123.33

There are no chirality outliers.

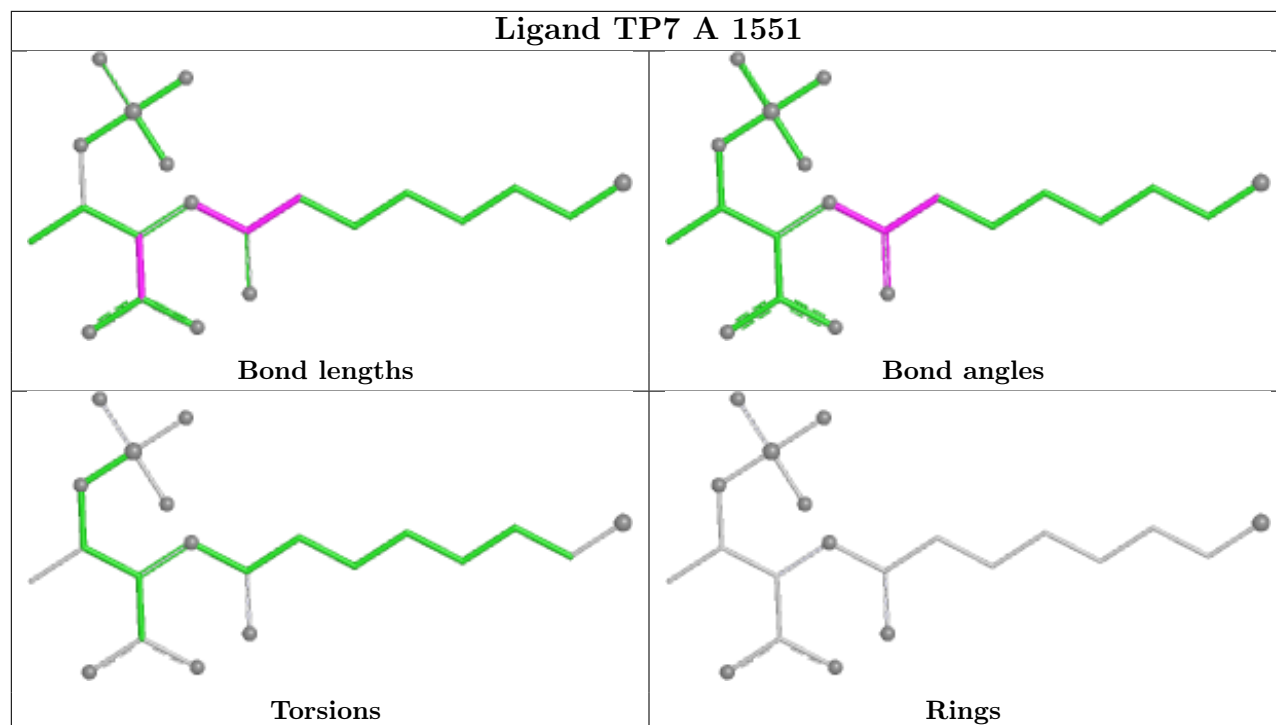
5 of 30 torsion outliers are listed below:

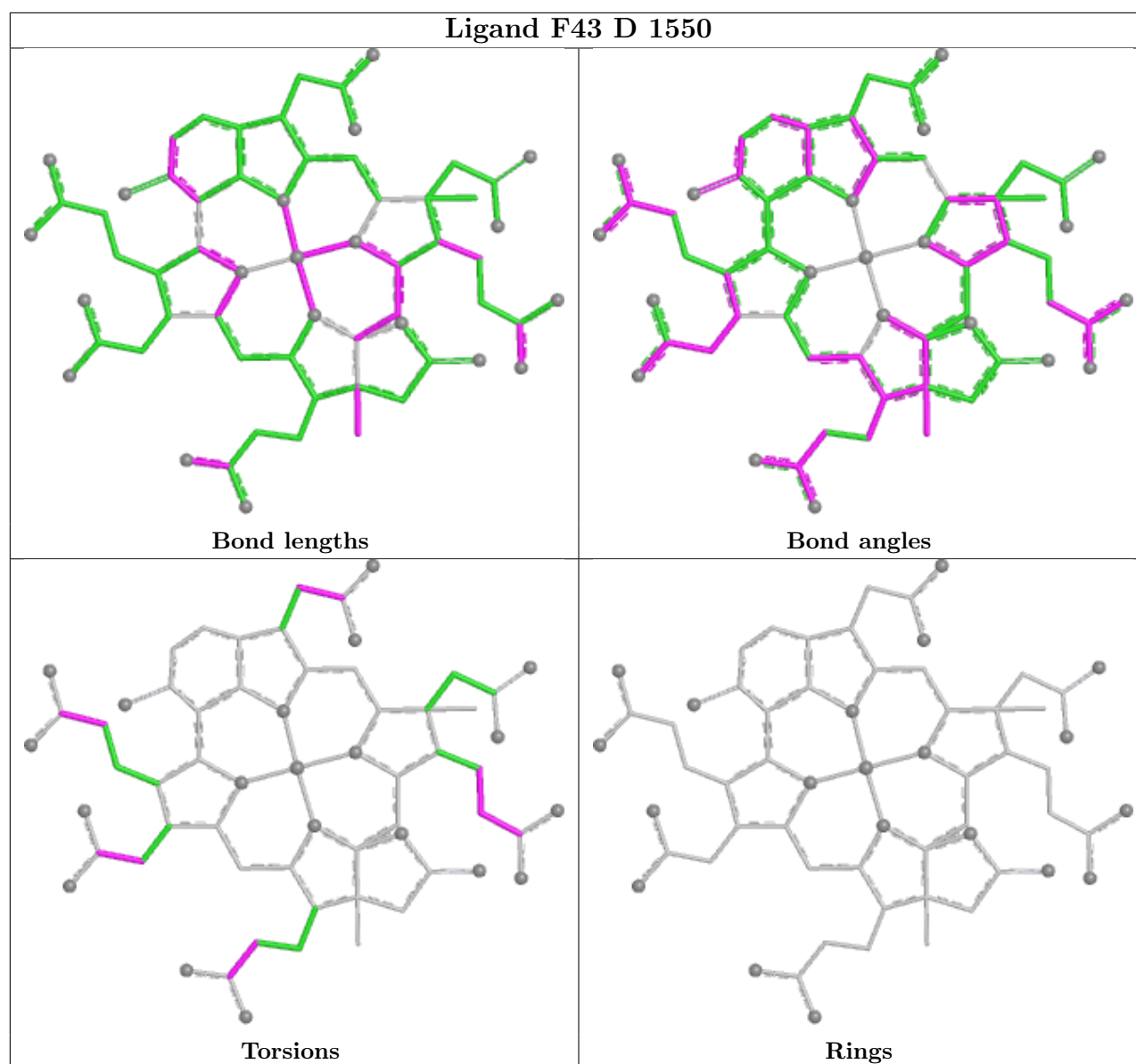
Mol	Chain	Res	Type	Atoms
7	A	1553	GOL	C1-C2-C3-O3
7	B	1444	GOL	C1-C2-C3-O3
7	D	1556	GOL	O1-C1-C2-C3
7	D	1556	GOL	C1-C2-C3-O3
7	D	1556	GOL	O2-C2-C3-O3

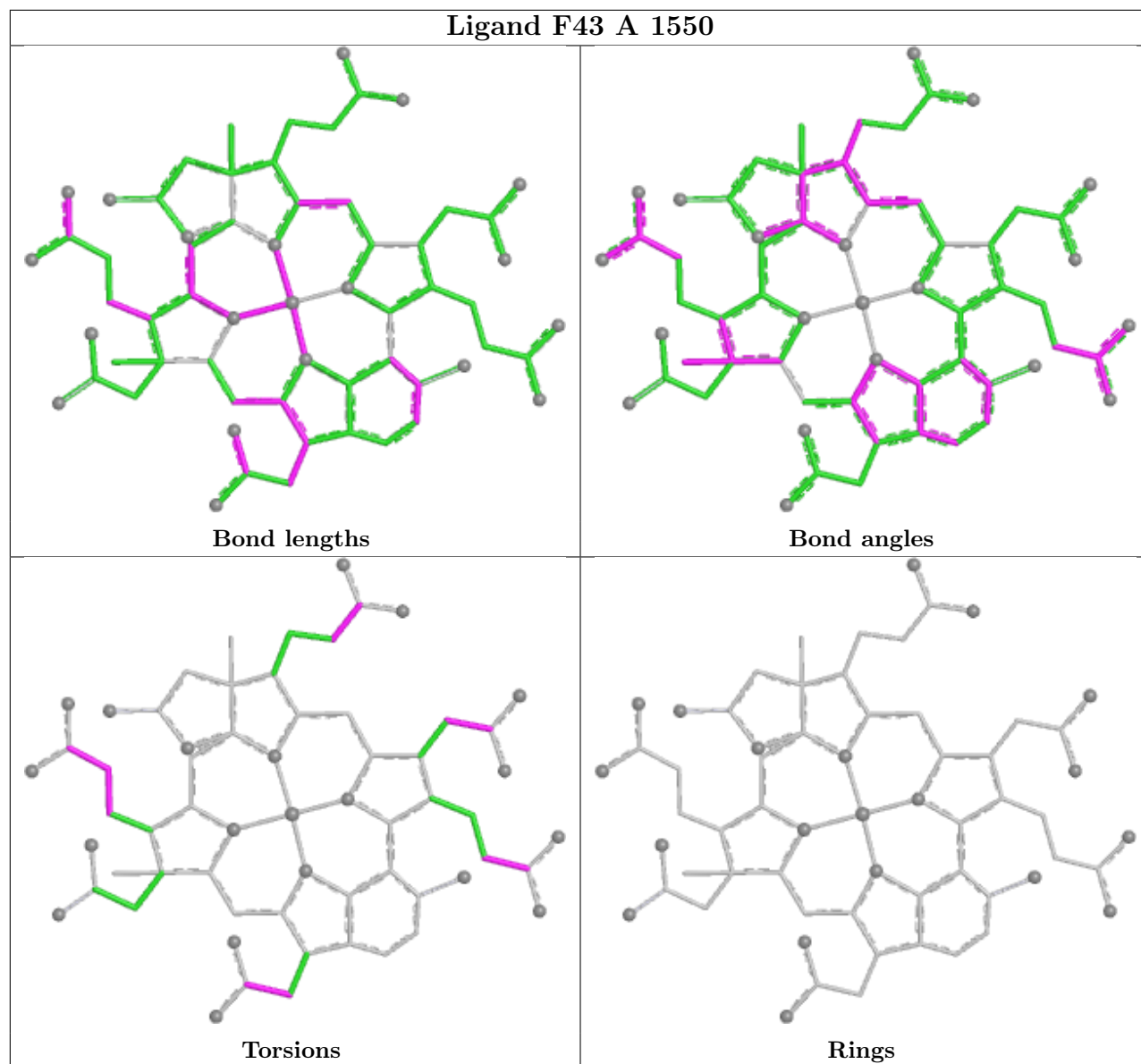
There are no ring outliers.

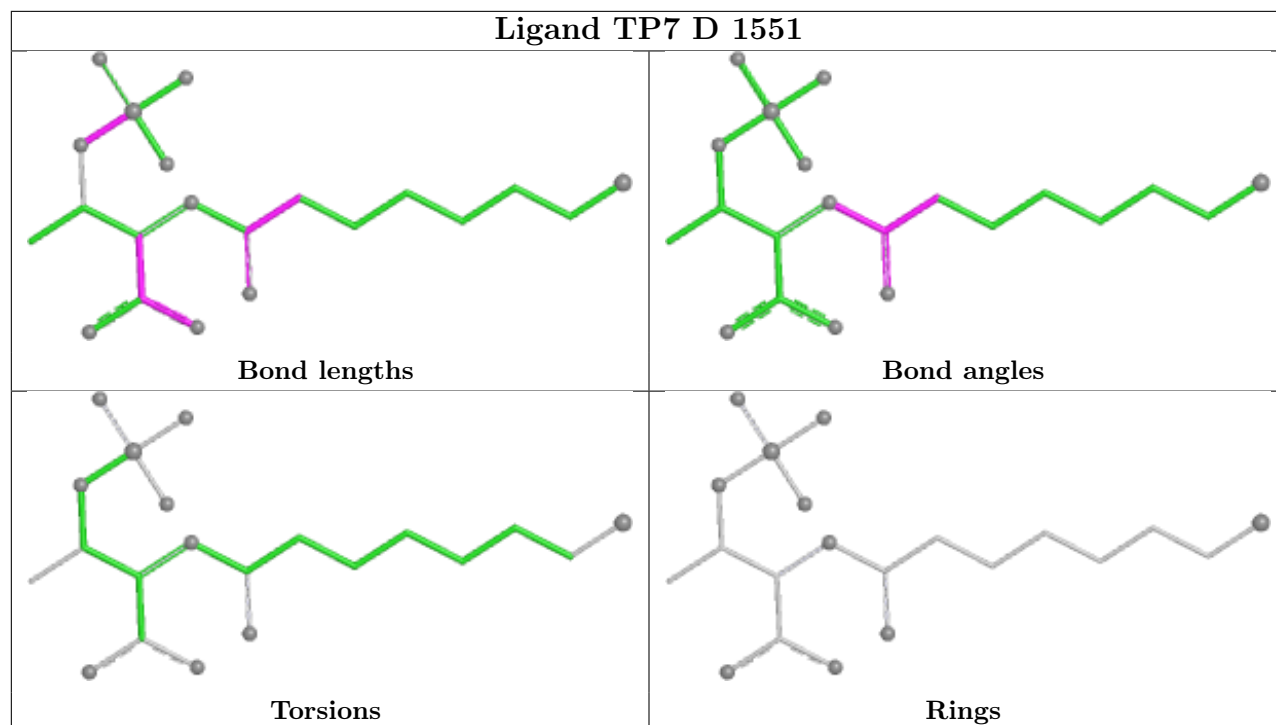
No monomer is involved in short contacts.

The following is a two-dimensional graphical depiction of Mogul quality analysis of bond lengths, bond angles, torsion angles, and ring geometry for all instances of the Ligand of Interest. In addition, ligands with molecular weight > 250 and outliers as shown on the validation Tables will also be included. For torsion angles, if less than 5% of the Mogul distribution of torsion angles is within 10 degrees of the torsion angle in question, then that torsion angle is considered an outlier. Any bond that is central to one or more torsion angles identified as an outlier by Mogul will be highlighted in the graph. For rings, the root-mean-square deviation (RMSD) between the ring in question and similar rings identified by Mogul is calculated over all ring torsion angles. If the average RMSD is greater than 60 degrees and the minimal RMSD between the ring in question and any Mogul-identified rings is also greater than 60 degrees, then that ring is considered an outlier. The outliers are highlighted in purple. The color gray indicates Mogul did not find sufficient equivalents in the CSD to analyse the geometry.









#### 4.7 Other polymers [i](#)

There are no such residues in this entry.

#### 4.8 Polymer linkage issues [i](#)

There are no chain breaks in this entry.

## 5 Fit of model and data [i](#)

### 5.1 Protein, DNA and RNA chains [i](#)

EDS was not executed - this section is therefore empty.

### 5.2 Non-standard residues in protein, DNA, RNA chains [i](#)

EDS was not executed - this section is therefore empty.

### 5.3 Carbohydrates [i](#)

EDS was not executed - this section is therefore empty.

### 5.4 Ligands [i](#)

EDS was not executed - this section is therefore empty.

### 5.5 Other polymers [i](#)

EDS was not executed - this section is therefore empty.