



Full wwPDB X-ray Structure Validation Report ⓘ

Mar 9, 2026 – 11:18 AM UTC

PDB ID : 9GCR / pdb_00009gcr
Title : Human Butyrylcholinesterase in complex with N1,N1-dimethyl-N2-(6-(naphthalen-1-yl)-5-(pyridin-4-yl)pyridazin-3-yl)ethane-1,2-diamine
Authors : Brazzolotto, X.; Meden, A.; Knez, D.; Gobec, S.; Nachon, F.
Deposited on : 2024-08-02
Resolution : 2.84 Å(reported)

This is a Full wwPDB X-ray Structure Validation Report for a publicly released PDB entry.

We welcome your comments at validation@mail.wwpdb.org

A user guide is available at

<https://www.wwpdb.org/validation/2017/XrayValidationReportHelp>

with specific help available everywhere you see the ⓘ symbol.

The types of validation reports are described at

<http://www.wwpdb.org/validation/2017/FAQs#types>.

The following versions of software and data (see [references ⓘ](#)) were used in the production of this report:

MolProbity : 4-5-2 with Phenix2.0
Mogul : 2022.3.0, CSD as543be (2022)
Xtrriage (Phenix) : 2.0
EDS : 3.0
Buster-report : wwPDB partial adaption of 1.1.7 (2018)
Percentile statistics : 20250101.v01 (using entries in the PDB archive January 1st 2025)
CCP4 : 9.0.010 (Gargrove)
Density-Fitness : 1.0.12
Ideal geometry (proteins) : Engh & Huber (2001)
Ideal geometry (DNA, RNA) : Parkinson et al. (1996)
Validation Pipeline (wwPDB-VP) : 2.49

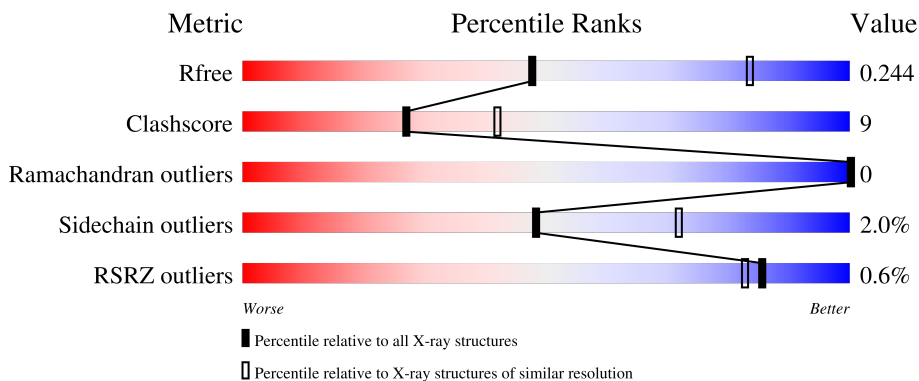
1 Overall quality at a glance

The following experimental techniques were used to determine the structure:

X-RAY DIFFRACTION

The reported resolution of this entry is 2.84 Å.

Percentile scores (ranging between 0-100) for global validation metrics of the entry are shown in the following graphic. The table shows the number of entries on which the scores are based.



Metric	Whole archive (#Entries)	Similar resolution (#Entries, resolution range(Å))
R_{free}	180053	1520 (2.86-2.82)
Clashscore	190562	1559 (2.86-2.82)
Ramachandran outliers	187476	1517 (2.86-2.82)
Sidechain outliers	187428	1518 (2.86-2.82)
RSRZ outliers	180081	1521 (2.86-2.82)

The table below summarises the geometric issues observed across the polymeric chains and their fit to the electron density. The red, orange, yellow and green segments of the lower bar indicate the fraction of residues that contain outliers for ≥ 3 , 2, 1 and 0 types of geometric quality criteria respectively. A grey segment represents the fraction of residues that are not modelled. The numeric value for each fraction is indicated below the corresponding segment, with a dot representing fractions $\leq 5\%$. The upper red bar (where present) indicates the fraction of residues that have poor fit to the electron density. The numeric value is given above the bar.

Mol	Chain	Length	Quality of chain
1	A	529	 79% 20% ..
2	B	4	 100%
2	E	4	 75% 25%
3	C	2	 50% 50%
4	D	3	 100%

2 Entry composition [i](#)

There are 9 unique types of molecules in this entry. The entry contains 4565 atoms, of which 0 are hydrogens and 0 are deuteriums.

In the tables below, the ZeroOcc column contains the number of atoms modelled with zero occupancy, the AltConf column contains the number of residues with at least one atom in alternate conformation and the Trace column contains the number of residues modelled with at most 2 atoms.

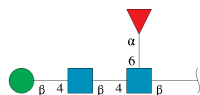
- Molecule 1 is a protein called Cholinesterase.

Mol	Chain	Residues	Atoms					ZeroOcc	AltConf	Trace
			Total	C	N	O	S			
1	A	526	4232	2732	712	773	15	0	5	0

There are 4 discrepancies between the modelled and reference sequences:

Chain	Residue	Modelled	Actual	Comment	Reference
A	17	GLN	ASN	engineered mutation	UNP P06276
A	455	GLN	ASN	engineered mutation	UNP P06276
A	481	GLN	ASN	engineered mutation	UNP P06276
A	486	GLN	ASN	engineered mutation	UNP P06276

- Molecule 2 is an oligosaccharide called beta-D-mannopyranose-(1-4)-2-acetamido-2-deoxy-beta-D-glucopyranose-(1-4)-[alpha-L-fucopyranose-(1-6)]2-acetamido-2-deoxy-beta-D-glucopyranose.



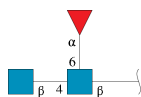
Mol	Chain	Residues	Atoms				ZeroOcc	AltConf	Trace
			Total	C	N	O			
2	B	4	49	28	2	19	0	0	0
2	E	4	49	28	2	19	0	0	0

- Molecule 3 is an oligosaccharide called alpha-L-fucopyranose-(1-6)-2-acetamido-2-deoxy-beta-D-glucopyranose.



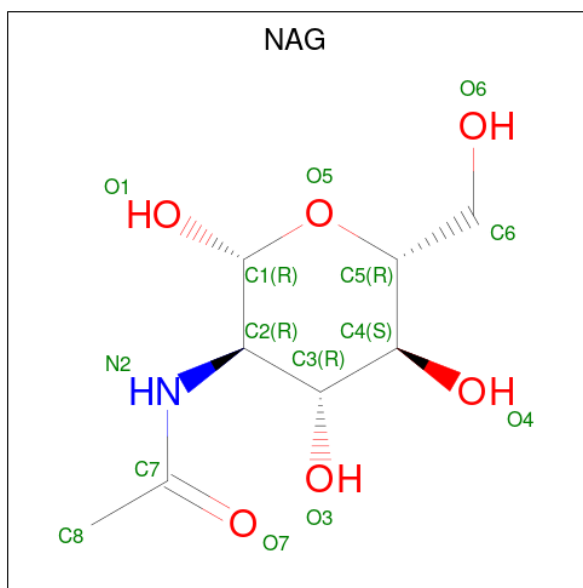
Mol	Chain	Residues	Atoms				ZeroOcc	AltConf	Trace
			Total	C	N	O			
3	C	2	24	14	1	9	0	0	0

- Molecule 4 is an oligosaccharide called 2-acetamido-2-deoxy-beta-D-glucopyranose-(1-4)-[alpha-L-fucopyranose-(1-6)]2-acetamido-2-deoxy-beta-D-glucopyranose.



Mol	Chain	Residues	Atoms				ZeroOcc	AltConf	Trace
			Total	C	N	O			
4	D	3	38	22	2	14	0	0	0

- Molecule 5 is 2-acetamido-2-deoxy-beta-D-glucopyranose (CCD ID: NAG) (formula: $C_8H_{15}NO_6$).



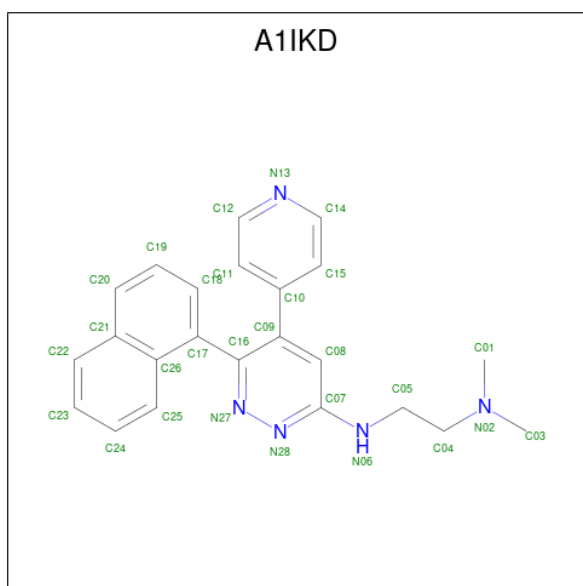
Mol	Chain	Residues	Atoms				ZeroOcc	AltConf
			Total	C	N	O		
5	A	1	14	8	1	5	0	0
5	A	1	14	8	1	5	0	0

- Molecule 6 is GLYCEROL (CCD ID: GOL) (formula: $C_3H_8O_3$).



Mol	Chain	Residues	Atoms			ZeroOcc	AltConf
6	A	1	Total	C	O	0	0
			6	3	3		
6	A	1	Total	C	O	0	0
			6	3	3		

- Molecule 7 is N',N'-dimethyl-N-(6-naphthalen-1-yl-5-pyridin-4-yl-pyridazin-3-yl)ethane-1,2-diamine (CCD ID: A1IKD) (formula: C₂₃H₂₃N₅).



Mol	Chain	Residues	Atoms			ZeroOcc	AltConf
7	A	1	Total	C	N	0	0
			28	23	5		

- Molecule 8 is SULFATE ION (CCD ID: SO4) (formula: O₄S).



Mol	Chain	Residues	Atoms			ZeroOcc	AltConf
8	A	1	Total	O	S	0	0
			5	4	1		
8	A	1	Total	O	S	0	0
			5	4	1		
8	A	1	Total	O	S	0	0
			5	4	1		
8	A	1	Total	O	S	0	0
			5	4	1		
8	A	1	Total	O	S	0	0
			5	4	1		

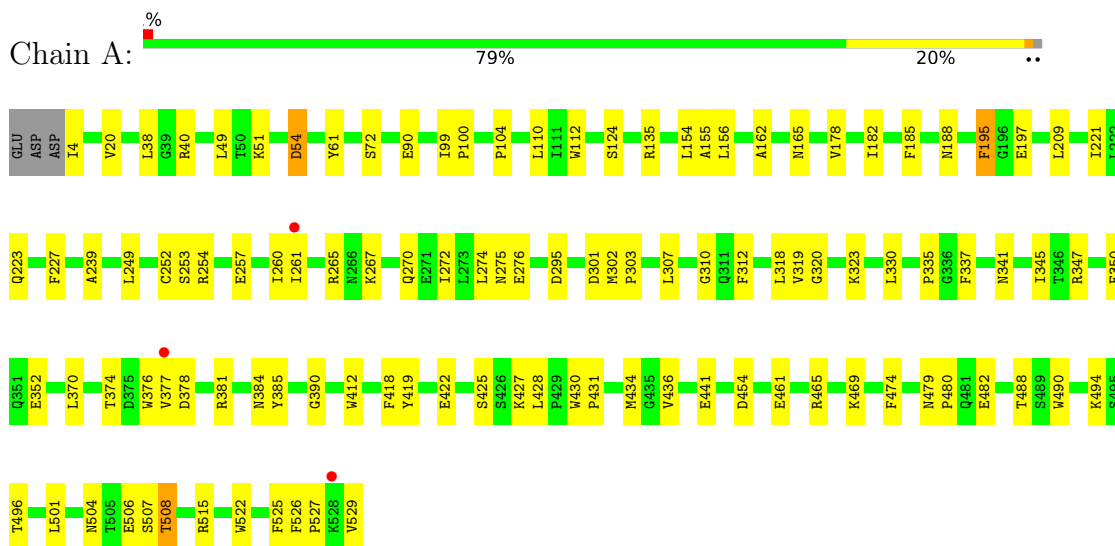
- Molecule 9 is water.

Mol	Chain	Residues	Atoms		ZeroOcc	AltConf
9	A	75	Total	O	0	0
			75	75		

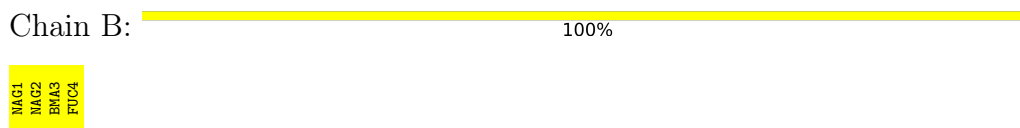
3 Residue-property plots

These plots are drawn for all protein, RNA, DNA and oligosaccharide chains in the entry. The first graphic for a chain summarises the proportions of the various outlier classes displayed in the second graphic. The second graphic shows the sequence view annotated by issues in geometry and electron density. Residues are color-coded according to the number of geometric quality criteria for which they contain at least one outlier: green = 0, yellow = 1, orange = 2 and red = 3 or more. A red dot above a residue indicates a poor fit to the electron density ($RSRZ > 2$). Stretches of 2 or more consecutive residues without any outlier are shown as a green connector. Residues present in the sample, but not in the model, are shown in grey.

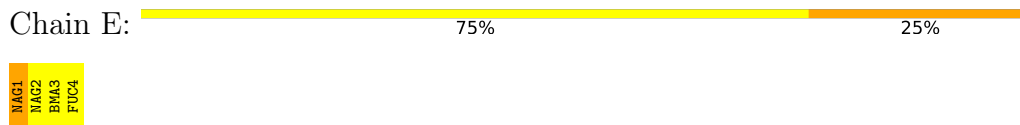
- Molecule 1: Cholinesterase



- Molecule 2: beta-D-mannopyranose-(1-4)-2-acetamido-2-deoxy-beta-D-glucopyranose-(1-4)-[alpha-L-fucopyranose-(1-6)]2-acetamido-2-deoxy-beta-D-glucopyranose



- Molecule 2: beta-D-mannopyranose-(1-4)-2-acetamido-2-deoxy-beta-D-glucopyranose-(1-4)-[alpha-L-fucopyranose-(1-6)]2-acetamido-2-deoxy-beta-D-glucopyranose



- Molecule 3: alpha-L-fucopyranose-(1-6)-2-acetamido-2-deoxy-beta-D-glucopyranose



- Molecule 4: 2-acetamido-2-deoxy-beta-D-glucopyranose-(1-4)-[alpha-L-fucopyranose-(1-6)]2-acetamido-2-deoxy-beta-D-glucopyranose

Chain D:

100%

MAG1
MAG2
FUC3

4 Data and refinement statistics

Property	Value	Source
Space group	I 4 2 2	Depositor
Cell constants a, b, c, α , β , γ	153.93Å 153.93Å 127.47Å 90.00° 90.00° 90.00°	Depositor
Resolution (Å)	49.09 – 2.84 49.09 – 2.84	Depositor EDS
% Data completeness (in resolution range)	99.8 (49.09-2.84) 99.8 (49.09-2.84)	Depositor EDS
R_{merge}	0.19	Depositor
R_{sym}	(Not available)	Depositor
$\langle I/\sigma(I) \rangle$ ¹	1.70 (at 2.86Å)	Xtrriage
Refinement program	PHENIX 1.21.1_5286	Depositor
R, R_{free}	0.171 , 0.244 0.184 , 0.244	Depositor DCC
R_{free} test set	891 reflections (4.84%)	wwPDB-VP
Wilson B-factor (Å ²)	71.0	Xtrriage
Anisotropy	0.284	Xtrriage
Bulk solvent k_{sol} (e/Å ³), B_{sol} (Å ²)	0.33 , 54.5	EDS
L-test for twinning ²	$\langle L \rangle = 0.48$, $\langle L^2 \rangle = 0.32$	Xtrriage
Estimated twinning fraction	No twinning to report.	Xtrriage
F_o, F_c correlation	0.95	EDS
Total number of atoms	4565	wwPDB-VP
Average B, all atoms (Å ²)	77.0	wwPDB-VP

Xtrriage's analysis on translational NCS is as follows: *The largest off-origin peak in the Patterson function is 3.52% of the height of the origin peak. No significant pseudotranslation is detected.*

¹Intensities estimated from amplitudes.

²Theoretical values of $\langle |L| \rangle$, $\langle L^2 \rangle$ for acentric reflections are 0.5, 0.333 respectively for untwinned datasets, and 0.375, 0.2 for perfectly twinned datasets.

5 Model quality [i](#)

5.1 Standard geometry [i](#)

Bond lengths and bond angles in the following residue types are not validated in this section: SO4, NAG, GOL, BMA, FUC, A1IKD

The Z score for a bond length (or angle) is the number of standard deviations the observed value is removed from the expected value. A bond length (or angle) with $|Z| > 5$ is considered an outlier worth inspection. RMSZ is the root-mean-square of all Z scores of the bond lengths (or angles).

Mol	Chain	Bond lengths		Bond angles	
		RMSZ	# Z >5	RMSZ	# Z >5
1	A	0.38	0/4359	0.55	0/5917

There are no bond length outliers.

There are no bond angle outliers.

There are no chirality outliers.

There are no planarity outliers.

5.2 Too-close contacts [i](#)

In the following table, the Non-H and H(model) columns list the number of non-hydrogen atoms and hydrogen atoms in the chain respectively. The H(added) column lists the number of hydrogen atoms added and optimized by MolProbity. The Clashes column lists the number of clashes within the asymmetric unit, whereas Symm-Clashes lists symmetry-related clashes.

Mol	Chain	Non-H	H(model)	H(added)	Clashes	Symm-Clashes
1	A	4232	0	4130	81	0
2	B	49	0	43	0	0
2	E	49	0	43	1	0
3	C	24	0	22	2	0
4	D	38	0	34	0	0
5	A	28	0	26	0	0
6	A	12	0	16	0	0
7	A	28	0	0	0	0
8	A	30	0	0	0	0
9	A	75	0	0	3	0
All	All	4565	0	4314	81	0

The all-atom clashscore is defined as the number of clashes found per 1000 atoms (including hydrogen atoms). The all-atom clashscore for this structure is 9.

All (81) close contacts within the same asymmetric unit are listed below, sorted by their clash magnitude.

Atom-1	Atom-2	Interatomic distance (Å)	Clash overlap (Å)
1:A:40:ARG:O	1:A:265:ARG:NH1	2.20	0.75
1:A:270:GLN:O	1:A:274:LEU:HD22	1.91	0.71
1:A:51:LYS:HD3	1:A:51:LYS:H	1.60	0.67
1:A:323:LYS:HB3	1:A:436:VAL:CG1	2.26	0.65
1:A:257:GLU:HA	1:A:260:ILE:HD12	1.77	0.65
1:A:378:ASP:HB3	1:A:381:ARG:HD3	1.78	0.64
1:A:209:LEU:HD23	1:A:312:PHE:HB3	1.81	0.63
1:A:469:LYS:HG2	1:A:482:GLU:HG2	1.82	0.60
1:A:430:TRP:HB3	1:A:434:MET:HE2	1.83	0.60
1:A:515:ARG:NE	9:A:706:HOH:O	2.36	0.59
1:A:274:LEU:HD22	1:A:274:LEU:H	1.69	0.56
1:A:350:PHE:HB2	1:A:385:TYR:HB3	1.86	0.56
1:A:54:ASP:N	1:A:54:ASP:OD1	2.38	0.56
1:A:525:PHE:C	1:A:525:PHE:CD1	2.85	0.55
1:A:319:VAL:O	1:A:418:PHE:HA	2.07	0.54
1:A:320:GLY:HA3	1:A:419:TYR:CE2	2.45	0.52
1:A:227:PHE:HZ	1:A:307:LEU:HB2	1.75	0.51
1:A:301:ASP:OD1	1:A:302:MET:N	2.43	0.51
1:A:494:LYS:HB3	9:A:703:HOH:O	2.11	0.51
1:A:227:PHE:CD1	1:A:303:PRO:HB2	2.45	0.51
1:A:261:ILE:HG22	1:A:265:ARG:HE	1.75	0.50
1:A:474:PHE:HB2	1:A:480:PRO:HB3	1.92	0.50
1:A:254:ARG:HB2	1:A:260:ILE:HG13	1.93	0.50
1:A:427:LYS:HD2	1:A:454:ASP:O	2.12	0.50
1:A:188:ASN:HD21	3:C:2:FUC:H3	1.77	0.49
1:A:501:LEU:HD11	1:A:508:THR:HG23	1.94	0.49
1:A:38:LEU:HD23	1:A:90:GLU:HB2	1.95	0.49
1:A:221:ILE:HG23	1:A:318:LEU:HB3	1.94	0.49
1:A:252:CYS:SG	1:A:267:LYS:HE2	2.53	0.48
1:A:188:ASN:ND2	3:C:2:FUC:H3	2.28	0.48
1:A:312:PHE:HZ	1:A:412:TRP:CD1	2.32	0.48
1:A:227:PHE:CE1	1:A:303:PRO:HB2	2.48	0.48
1:A:310:GLY:HA2	1:A:312:PHE:CE1	2.49	0.47
1:A:156:LEU:HD23	1:A:156:LEU:HA	1.69	0.47
1:A:465:ARG:HA	1:A:465:ARG:HD2	1.70	0.47
1:A:209:LEU:CD2	1:A:312:PHE:HB3	2.44	0.47
1:A:341:ASN:ND2	2:E:1:NAG:O7	2.48	0.47
1:A:419:TYR:HB3	1:A:490:TRP:CZ2	2.49	0.46
1:A:347:ARG:HB2	1:A:385:TYR:CZ	2.50	0.46
1:A:522:TRP:O	1:A:527:PRO:HD3	2.16	0.46

Continued on next page...

Continued from previous page...

Atom-1	Atom-2	Interatomic distance (Å)	Clash overlap (Å)
1:A:99:ILE:HG21	1:A:185:PHE:HB3	1.98	0.46
1:A:154:LEU:HD23	1:A:162:ALA:HB1	1.98	0.46
1:A:323:LYS:HB3	1:A:436:VAL:HG13	1.97	0.46
1:A:430:TRP:HB3	1:A:431:PRO:HD2	1.98	0.46
1:A:249:LEU:HB3	1:A:275:ASN:OD1	2.17	0.46
1:A:474:PHE:HA	1:A:479:ASN:H	1.81	0.45
1:A:427:LYS:HE2	1:A:427:LYS:HB3	1.72	0.45
1:A:112:TRP:HA	1:A:195:PHE:O	2.17	0.45
1:A:197:GLU:HG3	1:A:441:GLU:OE2	2.17	0.45
1:A:337:PHE:CE1	1:A:345:ILE:HD13	2.52	0.44
1:A:431:PRO:HG2	1:A:434:MET:HG3	2.00	0.44
1:A:38:LEU:CD2	1:A:90:GLU:HB2	2.47	0.44
1:A:195:PHE:CB	1:A:221:ILE:HB	2.48	0.44
1:A:507:SER:HA	9:A:753:HOH:O	2.17	0.44
1:A:320:GLY:HA3	1:A:419:TYR:CZ	2.53	0.43
1:A:61:TYR:CE1	1:A:124:SER:HA	2.53	0.43
1:A:335:PRO:HG3	1:A:352:GLU:HB3	2.01	0.43
1:A:370:LEU:O	1:A:374:THR:OG1	2.34	0.43
1:A:165:ASN:HD22	1:A:295:ASP:CG	2.26	0.43
1:A:425:SER:HB3	1:A:428:LEU:HB2	2.01	0.43
1:A:504:ASN:OD1	1:A:506:GLU:HG3	2.19	0.43
1:A:330:LEU:HD11	1:A:390:GLY:CA	2.49	0.43
1:A:100:PRO:HD2	1:A:104:PRO:CG	2.50	0.42
1:A:526:PHE:O	1:A:529:VAL:HG22	2.19	0.42
1:A:254:ARG:H	1:A:260:ILE:HG12	1.84	0.42
1:A:378:ASP:H	1:A:381:ARG:NH1	2.17	0.42
1:A:506:GLU:HG3	1:A:507:SER:H	1.84	0.42
1:A:488:THR:HB	1:A:508:THR:HG22	2.01	0.42
1:A:155:ALA:HB3	1:A:239:ALA:HB1	2.02	0.42
1:A:270:GLN:O	1:A:274:LEU:CD2	2.66	0.41
1:A:227:PHE:CD1	1:A:227:PHE:C	2.98	0.41
1:A:270:GLN:OE1	1:A:274:LEU:HD21	2.20	0.41
1:A:422:GLU:HA	1:A:436:VAL:HG11	2.02	0.41
1:A:197:GLU:HA	1:A:223:GLN:O	2.21	0.41
1:A:253:SER:O	1:A:254:ARG:NH1	2.51	0.41
1:A:376:TRP:CZ2	1:A:384:ASN:HB3	2.56	0.40
1:A:20:VAL:HB	1:A:135:ARG:HD3	2.03	0.40
1:A:49:LEU:HD12	1:A:49:LEU:HA	1.88	0.40
1:A:178:VAL:HG13	1:A:182:ILE:HB	2.04	0.40
1:A:272:ILE:O	1:A:276:GLU:HG3	2.22	0.40
1:A:274:LEU:HD22	1:A:274:LEU:N	2.34	0.40

There are no symmetry-related clashes.

5.3 Torsion angles [i](#)

5.3.1 Protein backbone [i](#)

In the following table, the Percentiles column shows the percent Ramachandran outliers of the chain as a percentile score with respect to all X-ray entries followed by that with respect to entries of similar resolution.

The Analysed column shows the number of residues for which the backbone conformation was analysed, and the total number of residues.

Mol	Chain	Analysed	Favoured	Allowed	Outliers	Percentiles
1	A	529/529 (100%)	494 (93%)	35 (7%)	0	100 100

There are no Ramachandran outliers to report.

5.3.2 Protein sidechains [i](#)

In the following table, the Percentiles column shows the percent sidechain outliers of the chain as a percentile score with respect to all X-ray entries followed by that with respect to entries of similar resolution.

The Analysed column shows the number of residues for which the sidechain conformation was analysed, and the total number of residues.

Mol	Chain	Analysed	Rotameric	Outliers	Percentiles
1	A	456/454 (100%)	446 (98%)	10 (2%)	45 69

All (10) residues with a non-rotameric sidechain are listed below:

Mol	Chain	Res	Type
1	A	4	ILE
1	A	54	ASP
1	A	72	SER
1	A	110[A]	LEU
1	A	110[B]	LEU
1	A	195	PHE
1	A	377	VAL
1	A	461	GLU
1	A	496	THR
1	A	508	THR

Sometimes sidechains can be flipped to improve hydrogen bonding and reduce clashes. All (3) such sidechains are listed below:

Mol	Chain	Res	Type
1	A	68	ASN
1	A	119	GLN
1	A	380	GLN

5.3.3 RNA [i](#)

There are no RNA molecules in this entry.

5.4 Non-standard residues in protein, DNA, RNA chains [i](#)

There are no non-standard protein/DNA/RNA residues in this entry.

5.5 Carbohydrates [i](#)

13 monosaccharides are modelled in this entry.

In the following table, the Counts columns list the number of bonds (or angles) for which Mogul statistics could be retrieved, the number of bonds (or angles) that are observed in the model and the number of bonds (or angles) that are defined in the Chemical Component Dictionary. The Link column lists molecule types, if any, to which the group is linked. The Z score for a bond length (or angle) is the number of standard deviations the observed value is removed from the expected value. A bond length (or angle) with $|Z| > 2$ is considered an outlier worth inspection. RMSZ is the root-mean-square of all Z scores of the bond lengths (or angles).

Mol	Type	Chain	Res	Link	Bond lengths			Bond angles		
					Counts	RMSZ	# Z > 2	Counts	RMSZ	# Z > 2
2	NAG	B	1	1,2	14,14,15	0.79	0	17,19,21	1.72	4 (23%)
2	NAG	B	2	2	14,14,15	1.01	1 (7%)	17,19,21	2.20	5 (29%)
2	BMA	B	3	2	11,11,12	0.92	1 (9%)	15,15,17	2.93	5 (33%)
2	FUC	B	4	2	10,10,11	0.73	0	14,14,16	1.18	1 (7%)
3	NAG	C	1	1,3	14,14,15	1.02	1 (7%)	17,19,21	1.77	5 (29%)
3	FUC	C	2	3	10,10,11	0.90	0	14,14,16	1.73	4 (28%)
4	NAG	D	1	1,4	14,14,15	0.78	1 (7%)	17,19,21	3.34	7 (41%)
4	NAG	D	2	4	14,14,15	1.00	1 (7%)	17,19,21	1.33	3 (17%)
4	FUC	D	3	4	10,10,11	0.80	0	14,14,16	1.25	1 (7%)
2	NAG	E	1	1,2	14,14,15	0.81	0	17,19,21	1.81	3 (17%)
2	NAG	E	2	2	14,14,15	0.77	0	17,19,21	1.29	2 (11%)

Mol	Type	Chain	Res	Link	Bond lengths			Bond angles		
					Counts	RMSZ	# Z > 2	Counts	RMSZ	# Z > 2
2	BMA	E	3	2	11,11,12	1.03	1 (9%)	15,15,17	2.52	6 (40%)
2	FUC	E	4	2	10,10,11	0.70	0	14,14,16	1.00	1 (7%)

In the following table, the Chirals column lists the number of chiral outliers, the number of chiral centers analysed, the number of these observed in the model and the number defined in the Chemical Component Dictionary. Similar counts are reported in the Torsion and Rings columns. '-' means no outliers of that kind were identified.

Mol	Type	Chain	Res	Link	Chirals	Torsions	Rings
2	NAG	B	1	1,2	-	2/6/23/26	0/1/1/1
2	NAG	B	2	2	-	3/6/23/26	0/1/1/1
2	BMA	B	3	2	-	0/2/19/22	0/1/1/1
2	FUC	B	4	2	-	-	0/1/1/1
3	NAG	C	1	1,3	-	0/6/23/26	0/1/1/1
3	FUC	C	2	3	-	-	0/1/1/1
4	NAG	D	1	1,4	-	1/6/23/26	0/1/1/1
4	NAG	D	2	4	-	2/6/23/26	0/1/1/1
4	FUC	D	3	4	-	-	0/1/1/1
2	NAG	E	1	1,2	-	2/6/23/26	0/1/1/1
2	NAG	E	2	2	-	0/6/23/26	0/1/1/1
2	BMA	E	3	2	-	1/2/19/22	0/1/1/1
2	FUC	E	4	2	-	-	0/1/1/1

All (6) bond length outliers are listed below:

Mol	Chain	Res	Type	Atoms	Z	Observed(Å)	Ideal(Å)
2	B	2	NAG	C1-C2	3.13	1.56	1.52
3	C	1	NAG	C1-C2	3.06	1.56	1.52
4	D	2	NAG	C1-C2	3.01	1.56	1.52
2	E	3	BMA	C2-C3	2.49	1.56	1.52
4	D	1	NAG	C1-C2	2.05	1.55	1.52
2	B	3	BMA	C2-C3	2.03	1.55	1.52

All (47) bond angle outliers are listed below:

Mol	Chain	Res	Type	Atoms	Z	Observed(°)	Ideal(°)
2	B	3	BMA	C1-O5-C5	9.34	124.70	112.19
4	D	1	NAG	C2-N2-C7	9.33	135.40	122.90
4	D	1	NAG	C1-C2-N2	6.07	119.99	110.43
2	E	3	BMA	C1-O5-C5	5.91	120.11	112.19
2	E	1	NAG	C2-N2-C7	5.60	130.41	122.90

Continued on next page...

Continued from previous page...

Mol	Chain	Res	Type	Atoms	Z	Observed(°)	Ideal(°)
2	B	2	NAG	C2-N2-C7	5.37	130.09	122.90
2	B	1	NAG	C1-O5-C5	4.49	118.20	112.19
4	D	1	NAG	C1-O5-C5	4.47	118.18	112.19
2	E	3	BMA	C3-C4-C5	4.07	117.61	110.23
2	E	3	BMA	C2-C3-C4	3.97	117.83	110.86
3	C	1	NAG	C1-O5-C5	3.79	117.27	112.19
3	C	1	NAG	O5-C1-C2	-3.75	105.49	111.29
2	B	2	NAG	C3-C4-C5	-3.72	103.49	110.23
2	B	3	BMA	C3-C4-C5	3.43	116.45	110.23
2	B	1	NAG	O5-C1-C2	-3.26	106.25	111.29
3	C	1	NAG	C3-C4-C5	-3.21	104.41	110.23
3	C	2	FUC	C1-O5-C5	3.16	120.43	112.97
4	D	1	NAG	O7-C7-N2	3.09	127.43	121.98
2	E	2	NAG	C4-C3-C2	3.08	115.53	111.02
2	B	2	NAG	C1-O5-C5	3.02	116.24	112.19
4	D	1	NAG	C8-C7-N2	-2.95	111.23	116.12
4	D	1	NAG	C4-C3-C2	2.89	115.26	111.02
3	C	2	FUC	O5-C5-C4	2.85	114.68	109.55
3	C	2	FUC	C1-C2-C3	2.78	113.69	109.64
2	E	1	NAG	C1-C2-N2	2.76	114.78	110.43
2	B	3	BMA	O5-C5-C4	2.72	117.45	110.83
4	D	2	NAG	C1-O5-C5	2.72	115.83	112.19
2	B	2	NAG	C1-C2-N2	2.58	114.50	110.43
2	B	1	NAG	C3-C4-C5	-2.58	105.56	110.23
2	B	3	BMA	C2-C3-C4	2.54	115.33	110.86
4	D	3	FUC	O4-C4-C5	2.52	115.30	109.74
2	E	3	BMA	O4-C4-C3	-2.52	104.43	110.38
3	C	1	NAG	O4-C4-C5	2.45	115.36	109.32
4	D	1	NAG	O4-C4-C3	-2.43	104.65	110.38
3	C	1	NAG	C1-C2-N2	2.43	114.26	110.43
2	E	2	NAG	C2-N2-C7	2.42	126.14	122.90
2	E	3	BMA	O5-C5-C6	2.33	112.20	107.66
2	B	2	NAG	C4-C3-C2	2.31	114.41	111.02
2	E	1	NAG	O5-C1-C2	-2.31	107.72	111.29
4	D	2	NAG	O5-C1-C2	-2.31	107.72	111.29
4	D	2	NAG	O4-C4-C5	2.18	114.70	109.32
2	E	4	FUC	O2-C2-C3	2.16	114.62	110.15
2	B	4	FUC	C1-O5-C5	2.16	118.06	112.97
3	C	2	FUC	O2-C2-C3	2.15	114.61	110.15
2	E	3	BMA	C1-C2-C3	2.11	112.71	109.64
2	B	3	BMA	C1-C2-C3	2.06	112.65	109.64
2	B	1	NAG	O4-C4-C5	2.02	114.31	109.32

There are no chirality outliers.

All (11) torsion outliers are listed below:

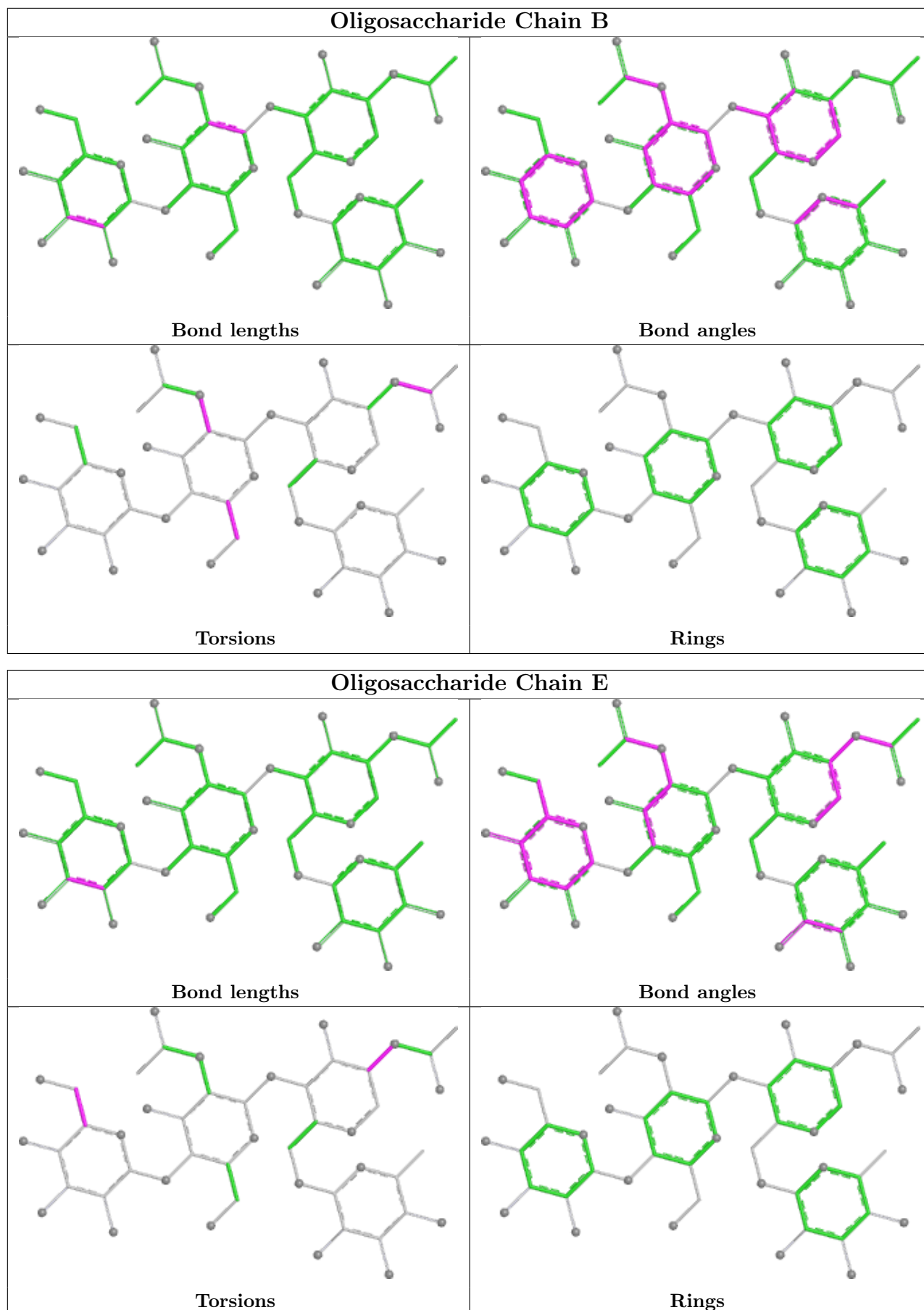
Mol	Chain	Res	Type	Atoms
2	E	1	NAG	C1-C2-N2-C7
4	D	1	NAG	C1-C2-N2-C7
4	D	2	NAG	O5-C5-C6-O6
2	B	1	NAG	C8-C7-N2-C2
2	B	1	NAG	O7-C7-N2-C2
2	E	3	BMA	C4-C5-C6-O6
4	D	2	NAG	C4-C5-C6-O6
2	E	1	NAG	C3-C2-N2-C7
2	B	2	NAG	O5-C5-C6-O6
2	B	2	NAG	C4-C5-C6-O6
2	B	2	NAG	C3-C2-N2-C7

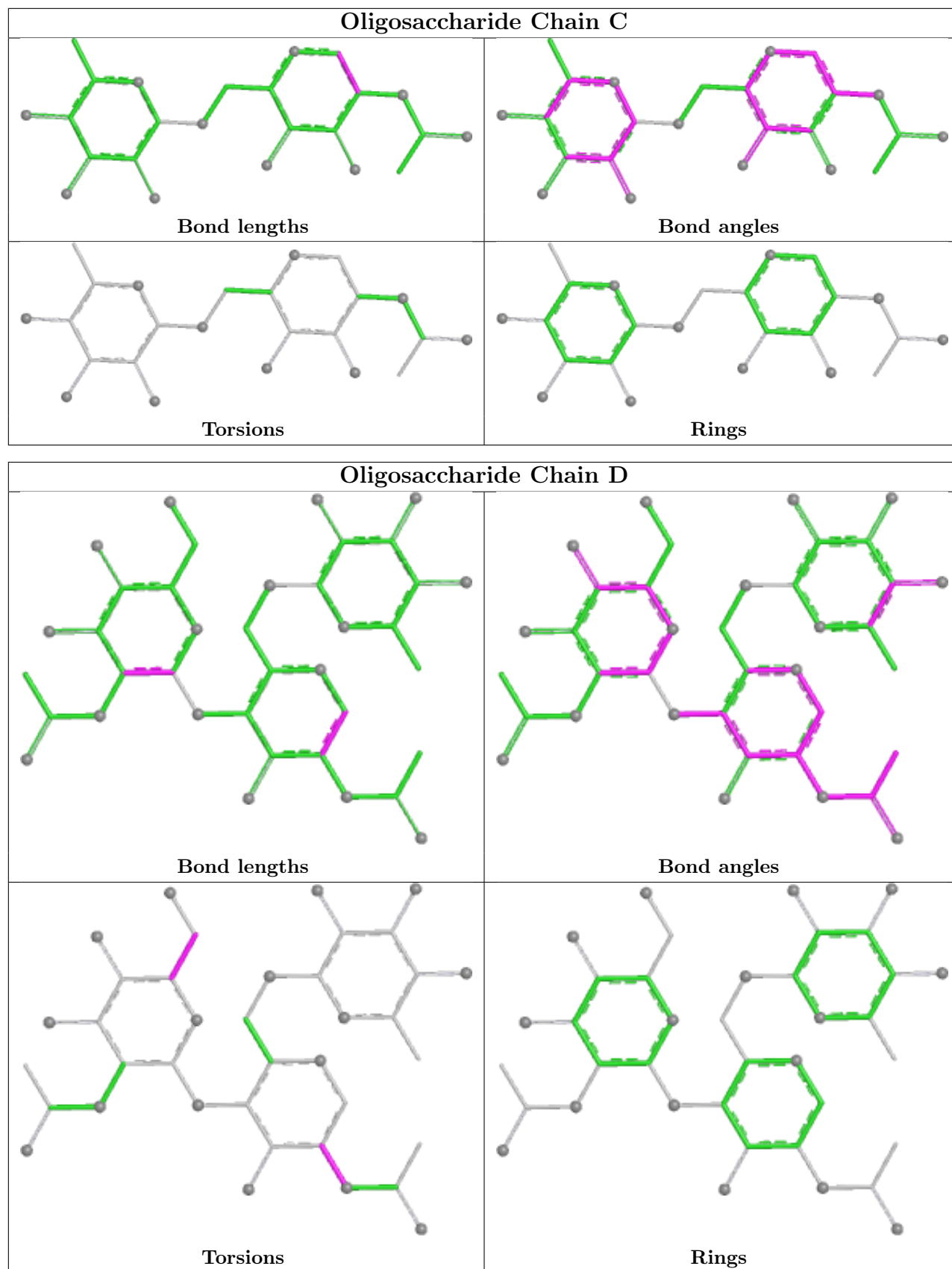
There are no ring outliers.

2 monomers are involved in 3 short contacts:

Mol	Chain	Res	Type	Clashes	Symm-Clashes
2	E	1	NAG	1	0
3	C	2	FUC	2	0

The following is a two-dimensional graphical depiction of Mogul quality analysis of bond lengths, bond angles, torsion angles, and ring geometry for oligosaccharide.





5.6 Ligand geometry

11 ligands are modelled in this entry.

In the following table, the Counts columns list the number of bonds (or angles) for which Mogul statistics could be retrieved, the number of bonds (or angles) that are observed in the model and the number of bonds (or angles) that are defined in the Chemical Component Dictionary. The Link column lists molecule types, if any, to which the group is linked. The Z score for a bond length (or angle) is the number of standard deviations the observed value is removed from the expected value. A bond length (or angle) with $|Z| > 2$ is considered an outlier worth inspection. RMSZ is the root-mean-square of all Z scores of the bond lengths (or angles).

Mol	Type	Chain	Res	Link	Bond lengths			Bond angles		
					Counts	RMSZ	# Z > 2	Counts	RMSZ	# Z > 2
8	SO4	A	606	-	4,4,4	0.71	0	6,6,6	0.32	0
5	NAG	A	601	1	14,14,15	0.65	0	17,19,21	1.43	3 (17%)
6	GOL	A	603	-	5,5,5	0.35	0	5,5,5	0.50	0
8	SO4	A	608	-	4,4,4	0.84	0	6,6,6	0.45	0
8	SO4	A	609	-	4,4,4	0.87	0	6,6,6	0.23	0
8	SO4	A	610	-	4,4,4	0.63	0	6,6,6	0.26	0
5	NAG	A	602	1	14,14,15	0.59	0	17,19,21	1.05	1 (5%)
8	SO4	A	607	-	4,4,4	0.77	0	6,6,6	0.15	0
8	SO4	A	611	-	4,4,4	0.73	0	6,6,6	0.19	0
6	GOL	A	604	-	5,5,5	0.23	0	5,5,5	0.64	0
7	A1IKD	A	605	-	30,31,31	1.75	7 (23%)	38,42,42	1.96	5 (13%)

In the following table, the Chirals column lists the number of chiral outliers, the number of chiral centers analysed, the number of these observed in the model and the number defined in the Chemical Component Dictionary. Similar counts are reported in the Torsion and Rings columns. '-' means no outliers of that kind were identified.

Mol	Type	Chain	Res	Link	Chirals	Torsions	Rings
5	NAG	A	601	1	-	0/6/23/26	0/1/1/1
6	GOL	A	603	-	-	4/4/4/4	-
5	NAG	A	602	1	-	3/6/23/26	0/1/1/1
6	GOL	A	604	-	-	4/4/4/4	-
7	A1IKD	A	605	-	-	6/14/14/14	0/4/4/4

All (7) bond length outliers are listed below:

Mol	Chain	Res	Type	Atoms	Z	Observed(Å)	Ideal(Å)
7	A	605	A1IKD	C16-N27	4.01	1.40	1.33
7	A	605	A1IKD	C09-C16	3.80	1.45	1.41
7	A	605	A1IKD	C07-N28	3.16	1.43	1.33

Continued on next page...

Continued from previous page...

Mol	Chain	Res	Type	Atoms	Z	Observed(Å)	Ideal(Å)
7	A	605	A1IKD	N28-N27	-2.85	1.27	1.34
7	A	605	A1IKD	C07-N06	2.52	1.40	1.36
7	A	605	A1IKD	C25-C26	2.45	1.47	1.42
7	A	605	A1IKD	C19-C18	2.39	1.43	1.38

All (9) bond angle outliers are listed below:

Mol	Chain	Res	Type	Atoms	Z	Observed(°)	Ideal(°)
7	A	605	A1IKD	C09-C16-N27	-8.91	117.67	122.05
7	A	605	A1IKD	C07-N28-N27	4.30	122.39	119.35
5	A	601	NAG	C1-O5-C5	3.17	116.43	112.19
7	A	605	A1IKD	C16-N27-N28	2.87	123.62	120.37
5	A	601	NAG	C2-N2-C7	2.86	126.73	122.90
7	A	605	A1IKD	C05-N06-C07	2.75	127.75	123.41
7	A	605	A1IKD	C08-C07-N28	-2.74	117.42	122.58
5	A	602	NAG	C1-O5-C5	2.60	115.67	112.19
5	A	601	NAG	C1-C2-N2	2.57	114.48	110.43

There are no chirality outliers.

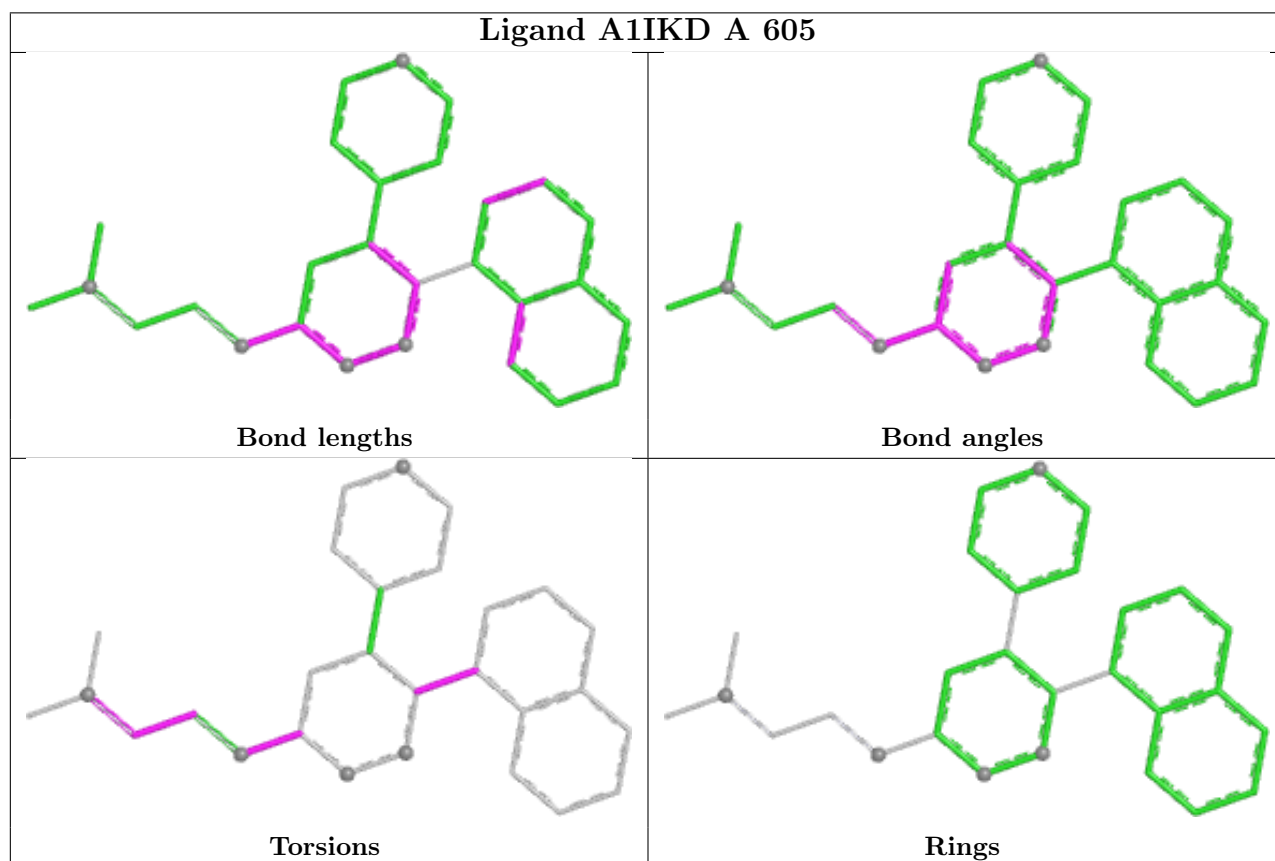
All (17) torsion outliers are listed below:

Mol	Chain	Res	Type	Atoms
6	A	603	GOL	O1-C1-C2-O2
6	A	603	GOL	O1-C1-C2-C3
6	A	603	GOL	C1-C2-C3-O3
6	A	604	GOL	O1-C1-C2-C3
6	A	604	GOL	C1-C2-C3-O3
6	A	604	GOL	O2-C2-C3-O3
7	A	605	A1IKD	N02-C04-C05-N06
7	A	605	A1IKD	C05-C04-N02-C03
5	A	602	NAG	C4-C5-C6-O6
5	A	602	NAG	O5-C5-C6-O6
7	A	605	A1IKD	N28-C07-N06-C05
6	A	603	GOL	O2-C2-C3-O3
6	A	604	GOL	O1-C1-C2-O2
7	A	605	A1IKD	C08-C07-N06-C05
7	A	605	A1IKD	N27-C16-C17-C18
7	A	605	A1IKD	C05-C04-N02-C01
5	A	602	NAG	C1-C2-N2-C7

There are no ring outliers.

No monomer is involved in short contacts.

The following is a two-dimensional graphical depiction of Mogul quality analysis of bond lengths, bond angles, torsion angles, and ring geometry for all instances of the Ligand of Interest. In addition, ligands with molecular weight > 250 and outliers as shown on the validation Tables will also be included. For torsion angles, if less than 5% of the Mogul distribution of torsion angles is within 10 degrees of the torsion angle in question, then that torsion angle is considered an outlier. Any bond that is central to one or more torsion angles identified as an outlier by Mogul will be highlighted in the graph. For rings, the root-mean-square deviation (RMSD) between the ring in question and similar rings identified by Mogul is calculated over all ring torsion angles. If the average RMSD is greater than 60 degrees and the minimal RMSD between the ring in question and any Mogul-identified rings is also greater than 60 degrees, then that ring is considered an outlier. The outliers are highlighted in purple. The color gray indicates Mogul did not find sufficient equivalents in the CSD to analyse the geometry.



5.7 Other polymers [\(i\)](#)

There are no such residues in this entry.

5.8 Polymer linkage issues [\(i\)](#)

There are no chain breaks in this entry.

6 Fit of model and data [i](#)

6.1 Protein, DNA and RNA chains [i](#)

In the following table, the column labelled '#RSRZ > 2' contains the number (and percentage) of RSRZ outliers, followed by percent RSRZ outliers for the chain as percentile scores relative to all X-ray entries and entries of similar resolution. The OWAB column contains the minimum, median, 95th percentile and maximum values of the occupancy-weighted average B-factor per residue. The column labelled 'Q < 0.9' lists the number of (and percentage) of residues with an average occupancy less than 0.9.

Mol	Chain	Analysed	<RSRZ>	#RSRZ>2	OWAB(Å ²)	Q<0.9
1	A	526/529 (99%)	-0.16	3 (0%) 85 83	30, 70, 107, 156	5 (0%)

All (3) RSRZ outliers are listed below:

Mol	Chain	Res	Type	RSRZ
1	A	377	VAL	3.0
1	A	261	ILE	2.6
1	A	528	LYS	2.1

6.2 Non-standard residues in protein, DNA, RNA chains [i](#)

There are no non-standard protein/DNA/RNA residues in this entry.

6.3 Carbohydrates [i](#)

In the following table, the Atoms column lists the number of modelled atoms in the group and the number defined in the chemical component dictionary. The B-factors column lists the minimum, median, 95th percentile and maximum values of B factors of atoms in the group. The column labelled 'Q < 0.9' lists the number of atoms with occupancy less than 0.9.

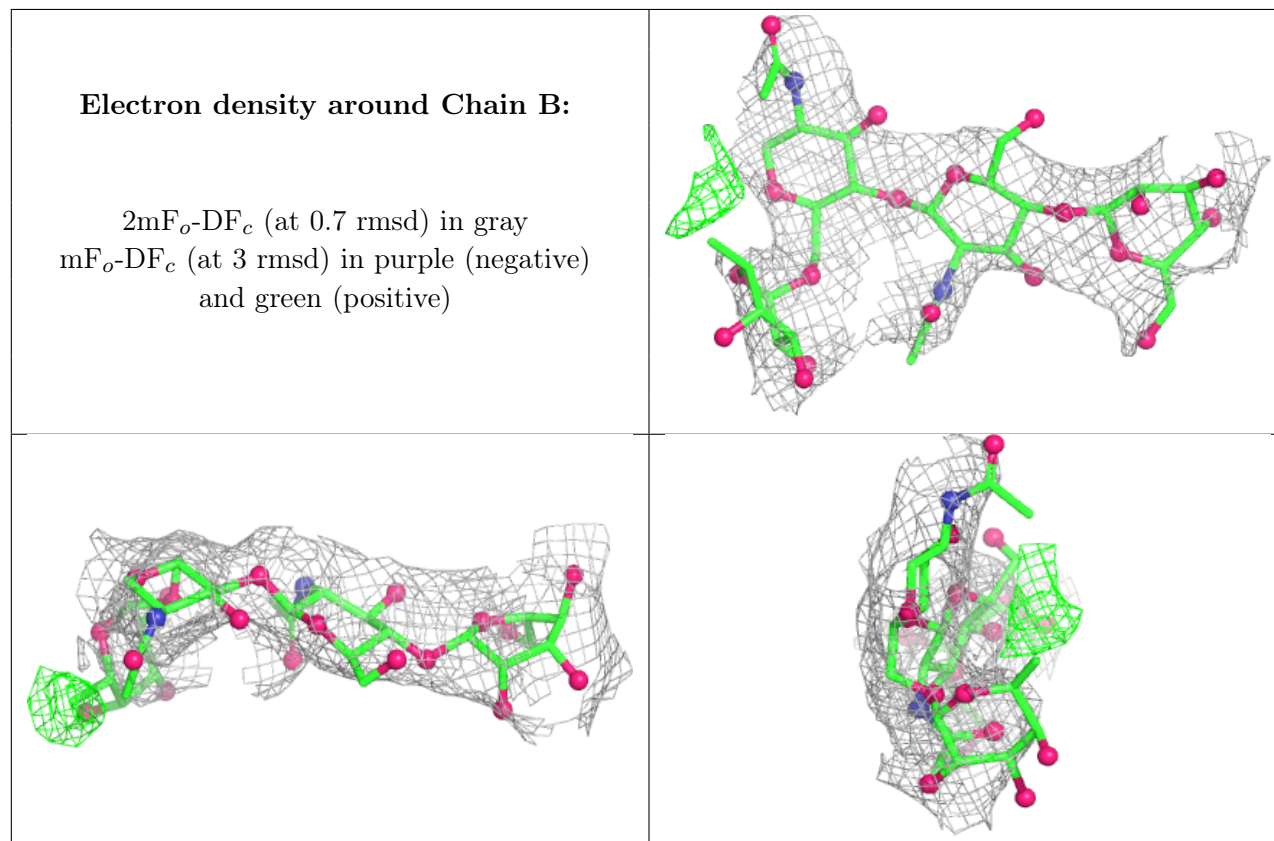
Mol	Type	Chain	Res	Atoms	RSCC	RSR	B-factors(Å ²)	Q<0.9
2	BMA	E	3	11/12	0.31	0.11	128,140,144,146	0
2	BMA	B	3	11/12	0.47	0.11	143,151,155,155	0
4	NAG	D	2	14/15	0.49	0.11	130,141,144,146	0
2	FUC	B	4	10/11	0.51	0.13	137,150,152,153	0
2	NAG	B	1	14/15	0.56	0.14	123,136,147,150	0
4	NAG	D	1	14/15	0.58	0.11	118,130,138,142	0
2	NAG	B	2	14/15	0.58	0.09	141,152,156,159	0
3	FUC	C	2	10/11	0.75	0.13	96,110,124,124	0
3	NAG	C	1	14/15	0.76	0.10	78,101,111,116	0

Continued on next page...

Continued from previous page...

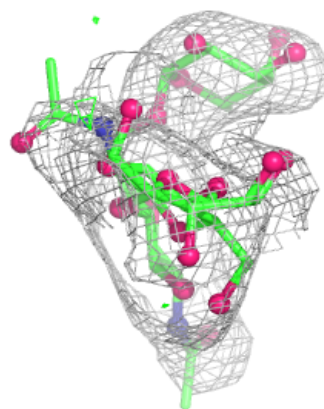
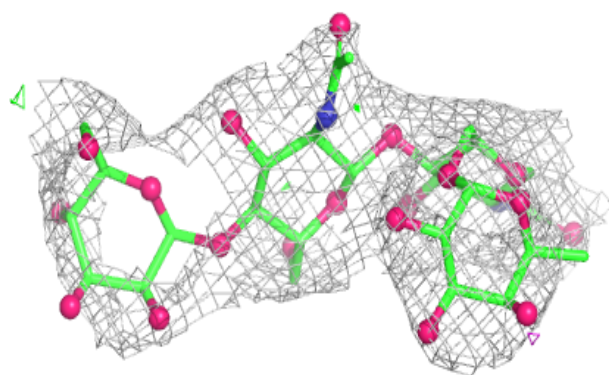
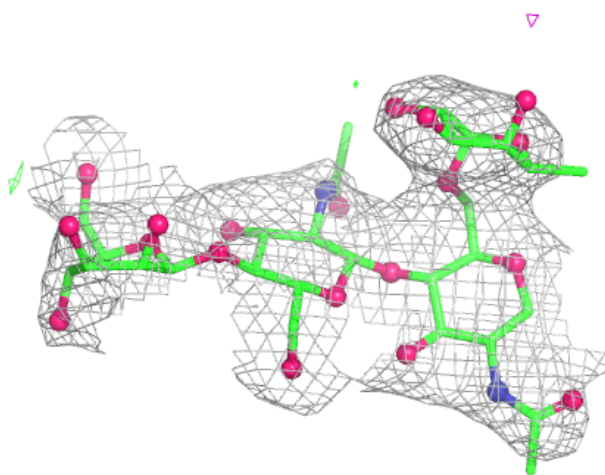
Mol	Type	Chain	Res	Atoms	RSCC	RSR	B-factors(\AA^2)	Q<0.9
2	FUC	E	4	10/11	0.79	0.15	94,100,105,107	0
2	NAG	E	2	14/15	0.80	0.10	99,111,129,141	0
4	FUC	D	3	10/11	0.81	0.09	102,117,128,131	0
2	NAG	E	1	14/15	0.92	0.09	79,88,94,103	0

The following is a graphical depiction of the model fit to experimental electron density for oligosaccharide. Each fit is shown from different orientation to approximate a three-dimensional view.



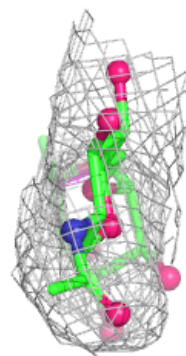
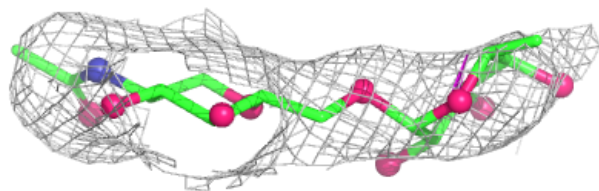
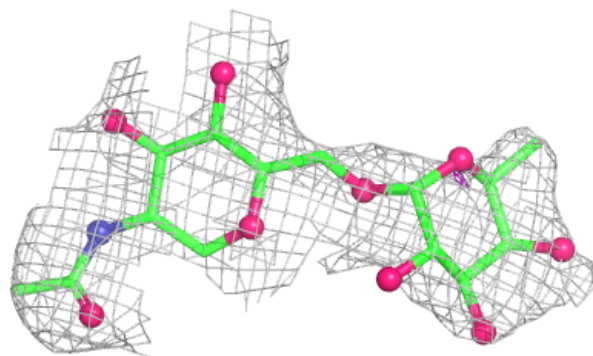
Electron density around Chain E:

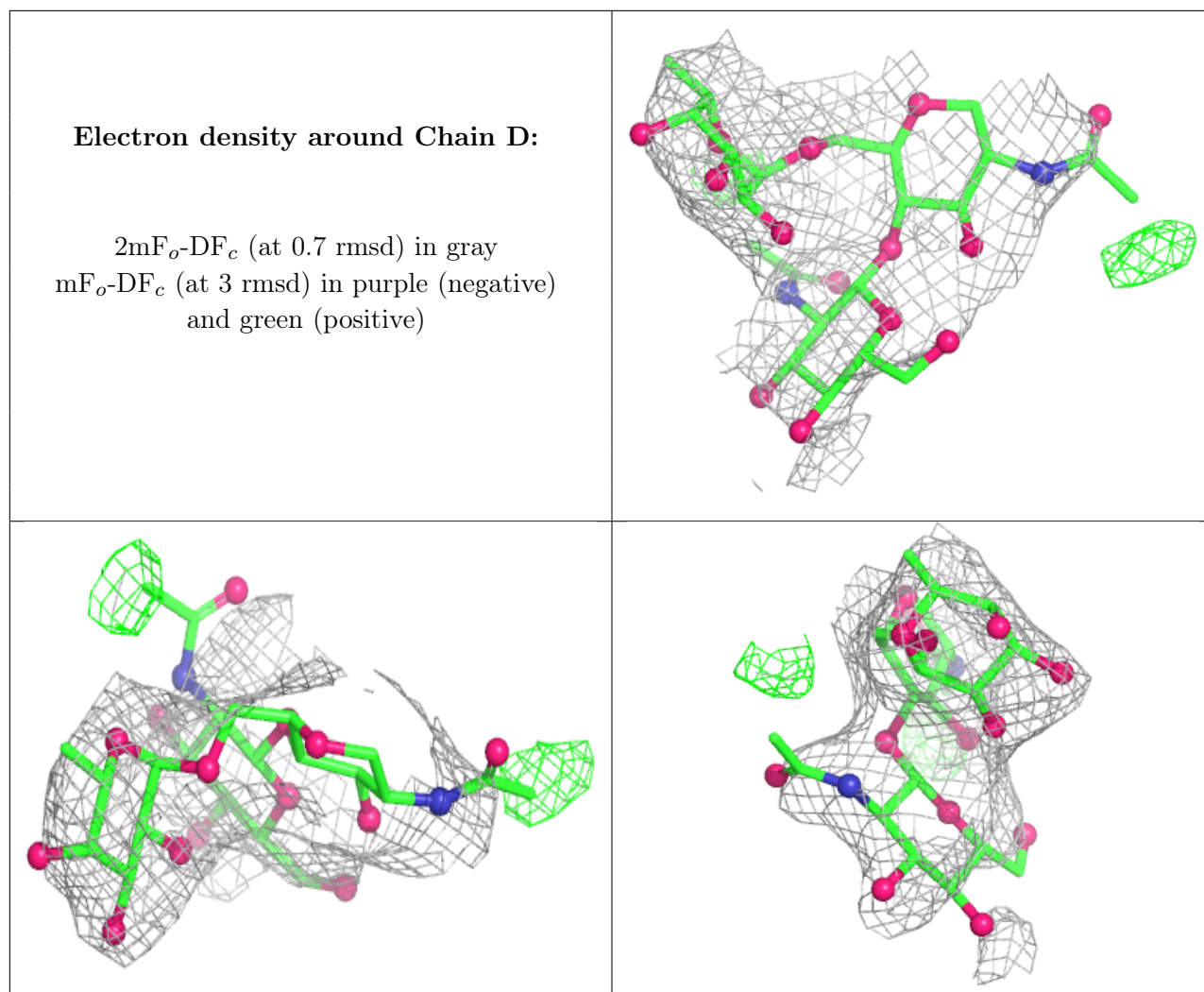
$2mF_o-DF_c$ (at 0.7 rmsd) in gray
 mF_o-DF_c (at 3 rmsd) in purple (negative)
and green (positive)



Electron density around Chain C:

$2mF_o-DF_c$ (at 0.7 rmsd) in gray
 mF_o-DF_c (at 3 rmsd) in purple (negative)
and green (positive)





6.4 Ligands i

In the following table, the Atoms column lists the number of modelled atoms in the group and the number defined in the chemical component dictionary. The B-factors column lists the minimum, median, 95th percentile and maximum values of B factors of atoms in the group. The column labelled 'Q< 0.9' lists the number of atoms with occupancy less than 0.9.

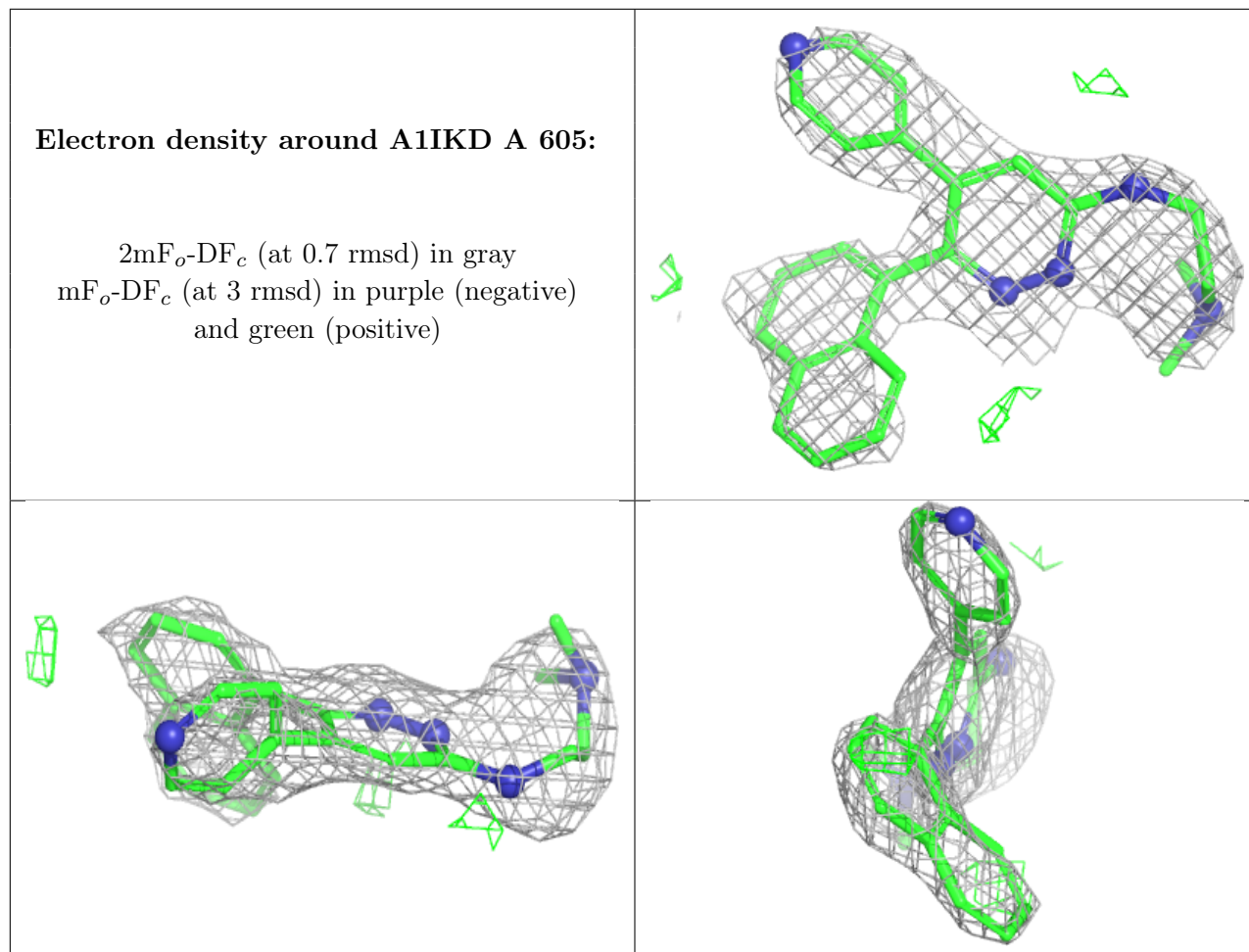
Mol	Type	Chain	Res	Atoms	RSCC	RSR	B-factors(Å ²)	Q<0.9
8	SO4	A	611	5/5	0.55	0.09	143,146,158,167	0
5	NAG	A	601	14/15	0.69	0.09	116,124,127,128	0
5	NAG	A	602	14/15	0.74	0.13	80,114,129,129	0
6	GOL	A	604	6/6	0.77	0.12	79,96,100,101	0
8	SO4	A	607	5/5	0.80	0.06	112,114,137,139	0
8	SO4	A	609	5/5	0.82	0.10	86,93,108,120	5
6	GOL	A	603	6/6	0.84	0.29	72,77,84,89	0
8	SO4	A	608	5/5	0.84	0.10	97,97,106,123	0
8	SO4	A	610	5/5	0.86	0.12	61,64,68,68	5

Continued on next page...

Continued from previous page...

Mol	Type	Chain	Res	Atoms	RSCC	RSR	B-factors(\AA^2)	Q<0.9
8	SO4	A	606	5/5	0.86	0.11	85,85,95,99	5
7	A1IKD	A	605	28/28	0.89	0.16	59,80,86,90	0

The following is a graphical depiction of the model fit to experimental electron density of all instances of the Ligand of Interest. In addition, ligands with molecular weight > 250 and outliers as shown on the geometry validation Tables will also be included. Each fit is shown from different orientation to approximate a three-dimensional view.



6.5 Other polymers [\(i\)](#)

There are no such residues in this entry.