



wwPDB X-ray Structure Validation Summary Report ⓘ

Mar 8, 2026 – 07:17 AM UTC

PDB ID : 4G8J / pdb_00004g8j
Title : X-ray Structure of Uridine Phosphorylase from *Vibrio cholerae* Complexed with Thymidine at 2.12 Å Resolution
Authors : Lashkov, A.A.; Gabdoulkhakov, A.G.; Prokofev, I.I.; Sotnichenko, S.E.; Betzel, C.; Mikhailov, A.M.
Deposited on : 2012-07-23
Resolution : 2.12 Å (reported)

This is a wwPDB X-ray Structure Validation Summary Report for a publicly released PDB entry.

We welcome your comments at validation@mail.wwpdb.org

A user guide is available at

<https://www.wwpdb.org/validation/2017/XrayValidationReportHelp>

with specific help available everywhere you see the ⓘ symbol.

The types of validation reports are described at

<http://www.wwpdb.org/validation/2017/FAQs#types>.

The following versions of software and data (see [references ⓘ](#)) were used in the production of this report:

MolProbity : 4-5-2 with Phenix2.0
Mogul : 2022.3.0, CSD as543be (2022)
Xtriage (Phenix) : 2.0
EDS : 3.0
Percentile statistics : 20250101.v01 (using entries in the PDB archive January 1st 2025)
CCP4 : 9.0.010 (Gargrove)
Density-Fitness : 1.0.12
Ideal geometry (proteins) : Engh & Huber (2001)
Ideal geometry (DNA, RNA) : Parkinson et al. (1996)
Validation Pipeline (wwPDB-VP) : 2.49

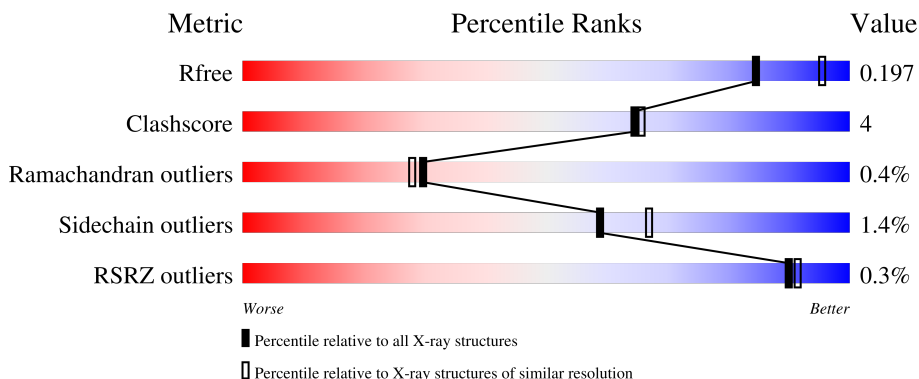
1 Overall quality at a glance

The following experimental techniques were used to determine the structure:

X-RAY DIFFRACTION

The reported resolution of this entry is 2.12 Å.

Percentile scores (ranging between 0-100) for global validation metrics of the entry are shown in the following graphic. The table shows the number of entries on which the scores are based.



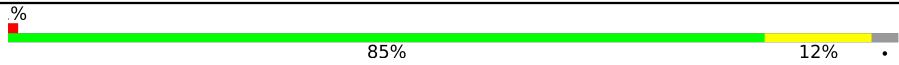
Metric	Whole archive (#Entries)	Similar resolution (#Entries, resolution range(Å))
R_{free}	180053	8290 (2.14-2.10)
Clashscore	190562	8817 (2.14-2.10)
Ramachandran outliers	187476	8738 (2.14-2.10)
Sidechain outliers	187428	8739 (2.14-2.10)
RSRZ outliers	180081	8294 (2.14-2.10)

The table below summarises the geometric issues observed across the polymeric chains and their fit to the electron density. The red, orange, yellow and green segments of the lower bar indicate the fraction of residues that contain outliers for ≥ 3 , 2, 1 and 0 types of geometric quality criteria respectively. A grey segment represents the fraction of residues that are not modelled. The numeric value for each fraction is indicated below the corresponding segment, with a dot representing fractions $\leq 5\%$. The upper red bar (where present) indicates the fraction of residues that have poor fit to the electron density. The numeric value is given above the bar.

Mol	Chain	Length	Quality of chain
1	A	253	85% 10% . .
1	B	253	87% 11% .
1	C	253	90% 9% .
1	D	253	91% 8% .
1	E	253	85% 14% .

Continued on next page...

Continued from previous page...

Mol	Chain	Length	Quality of chain
1	F	253	 <p>A horizontal bar chart representing the quality of the chain. The bar is divided into segments: a small red segment at the beginning, followed by a large green segment labeled '85%', then a yellow segment labeled '12%', and finally a small grey segment at the end. A '%' symbol is positioned above the bar on the left side.</p>

2 Entry composition [i](#)

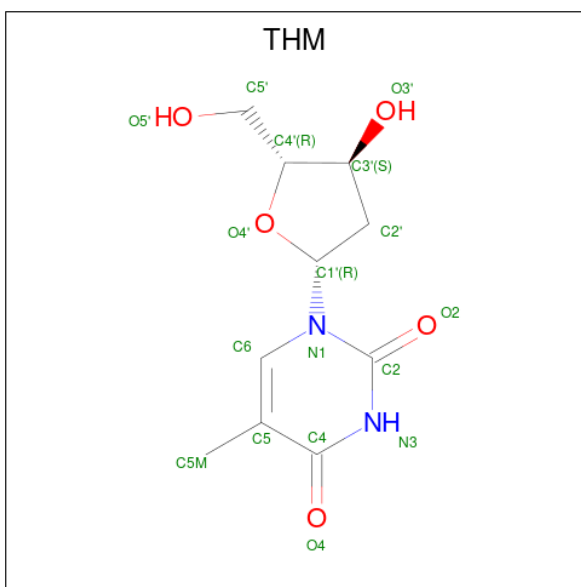
There are 7 unique types of molecules in this entry. The entry contains 12764 atoms, of which 0 are hydrogens and 0 are deuteriums.

In the tables below, the ZeroOcc column contains the number of atoms modelled with zero occupancy, the AltConf column contains the number of residues with at least one atom in alternate conformation and the Trace column contains the number of residues modelled with at most 2 atoms.

- Molecule 1 is a protein called Uridine phosphorylase.

Mol	Chain	Residues	Atoms					ZeroOcc	AltConf	Trace
			Total	C	N	O	S			
1	A	245	Total 1854	C 1162	N 323	O 356	S 13	0	3	0
1	B	252	Total 1900	C 1191	N 332	O 364	S 13	0	2	0
1	C	251	Total 1906	C 1193	N 336	O 364	S 13	0	3	0
1	D	251	Total 1907	C 1193	N 334	O 367	S 13	0	3	0
1	E	251	Total 1902	C 1191	N 332	O 366	S 13	0	3	0
1	F	246	Total 1851	C 1160	N 322	O 356	S 13	0	1	0

- Molecule 2 is THYMIDINE (CCD ID: THM) (formula: C₁₀H₁₄N₂O₅).



Mol	Chain	Residues	Atoms				ZeroOcc	AltConf
2	A	1	Total	C	N	O	0	0
			17	10	2	5		
2	B	1	Total	C	N	O	0	0
			17	10	2	5		
2	C	1	Total	C	N	O	0	0
			17	10	2	5		
2	D	1	Total	C	N	O	0	0
			17	10	2	5		
2	E	1	Total	C	N	O	0	0
			17	10	2	5		
2	F	1	Total	C	N	O	0	0
			17	10	2	5		

- Molecule 3 is CHLORIDE ION (CCD ID: CL) (formula: Cl).

Mol	Chain	Residues	Atoms		ZeroOcc	AltConf
3	A	2	Total	Cl	0	0
			2	2		
3	B	1	Total	Cl	0	0
			1	1		
3	C	1	Total	Cl	0	0
			1	1		
3	D	1	Total	Cl	0	0
			1	1		
3	E	1	Total	Cl	0	0
			1	1		
3	F	3	Total	Cl	0	0
			3	3		

- Molecule 4 is MAGNESIUM ION (CCD ID: MG) (formula: Mg).

Mol	Chain	Residues	Atoms		ZeroOcc	AltConf
4	A	1	Total	Mg	0	0
			1	1		
4	F	1	Total	Mg	0	0
			1	1		

- Molecule 5 is SODIUM ION (CCD ID: NA) (formula: Na).

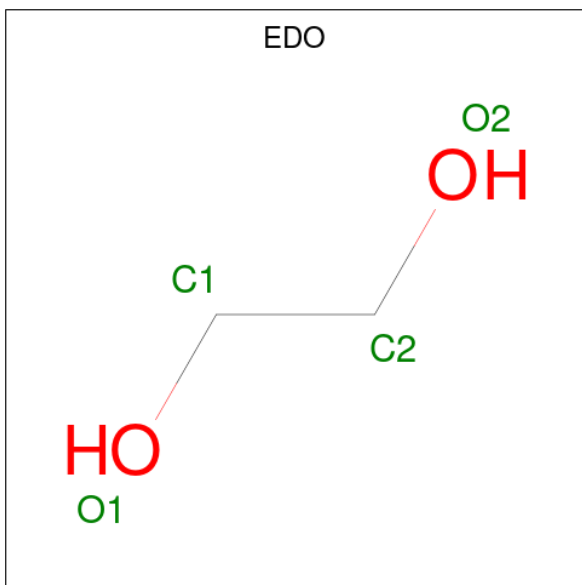
Mol	Chain	Residues	Atoms		ZeroOcc	AltConf
5	B	1	Total	Na	0	0
			1	1		

Continued on next page...

Continued from previous page...

Mol	Chain	Residues	Atoms	ZeroOcc	AltConf
5	C	1	Total Na 1 1	0	0
5	E	1	Total Na 1 1	0	0

- Molecule 6 is 1,2-ETHANEDIOL (CCD ID: EDO) (formula: C₂H₆O₂).



Mol	Chain	Residues	Atoms	ZeroOcc	AltConf
6	C	1	Total C O 4 2 2	0	0
6	C	1	Total C O 4 2 2	0	0
6	C	1	Total C O 4 2 2	0	0
6	E	1	Total C O 4 2 2	0	0

- Molecule 7 is water.

Mol	Chain	Residues	Atoms	ZeroOcc	AltConf
7	A	198	Total O 199 199	0	1
7	B	235	Total O 235 235	0	0
7	C	262	Total O 262 262	0	0

Continued on next page...

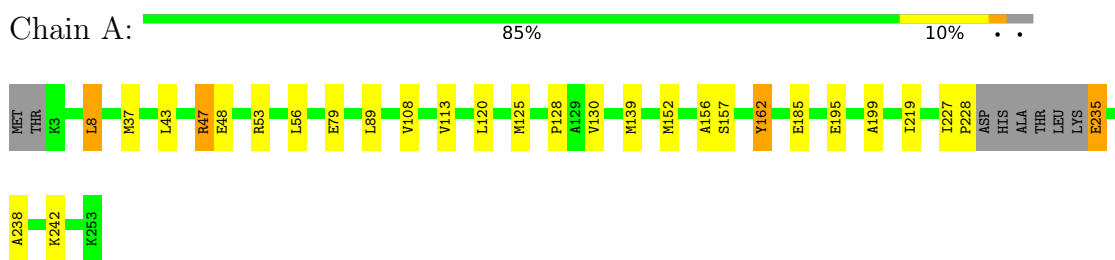
Continued from previous page...

Mol	Chain	Residues	Atoms		ZeroOcc	AltConf
7	D	254	Total 254	O 254	0	0
7	E	196	Total 196	O 196	0	0
7	F	166	Total 166	O 166	0	0

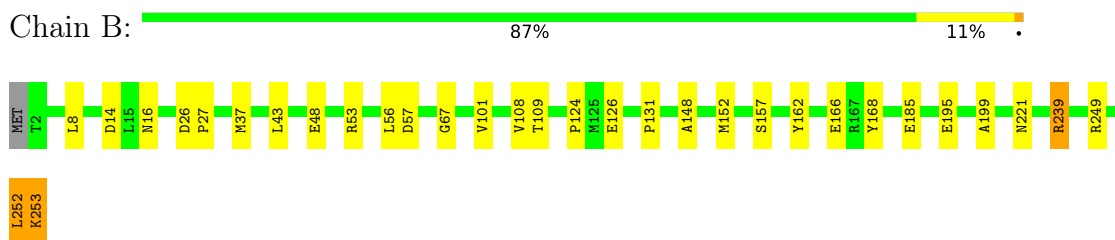
3 Residue-property plots [i](#)

These plots are drawn for all protein, RNA, DNA and oligosaccharide chains in the entry. The first graphic for a chain summarises the proportions of the various outlier classes displayed in the second graphic. The second graphic shows the sequence view annotated by issues in geometry and electron density. Residues are color-coded according to the number of geometric quality criteria for which they contain at least one outlier: green = 0, yellow = 1, orange = 2 and red = 3 or more. A red dot above a residue indicates a poor fit to the electron density ($RSRZ > 2$). Stretches of 2 or more consecutive residues without any outlier are shown as a green connector. Residues present in the sample, but not in the model, are shown in grey.

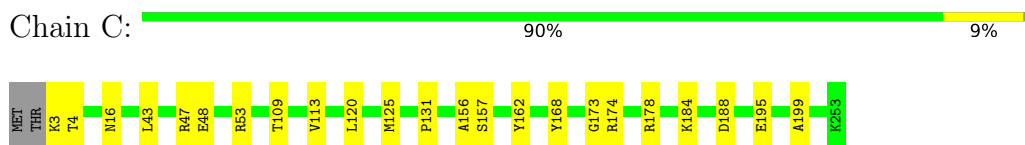
- Molecule 1: Uridine phosphorylase



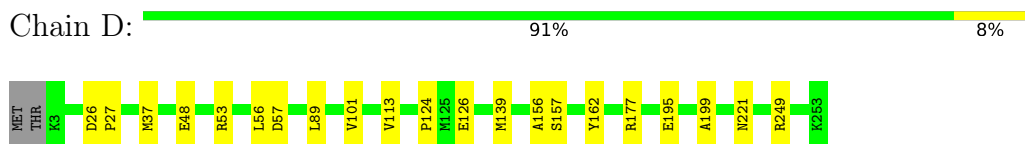
- Molecule 1: Uridine phosphorylase



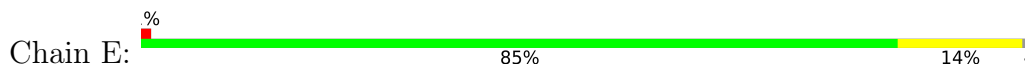
- Molecule 1: Uridine phosphorylase



- Molecule 1: Uridine phosphorylase

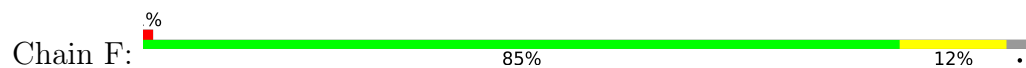


- Molecule 1: Uridine phosphorylase





- Molecule 1: Uridine phosphorylase



4 Data and refinement statistics i

Property	Value	Source
Space group	P 1 21 1	Depositor
Cell constants a, b, c, α , β , γ	91.80Å 95.91Å 91.89Å 90.00° 119.96° 90.00°	Depositor
Resolution (Å)	11.99 – 2.12 11.99 – 2.12	Depositor EDS
% Data completeness (in resolution range)	99.8 (11.99-2.12) 99.2 (11.99-2.12)	Depositor EDS
R_{merge}	(Not available)	Depositor
R_{sym}	0.08	Depositor
$\langle I/\sigma(I) \rangle$ ¹	4.12 (at 2.13Å)	Xtriage
Refinement program	PHENIX 1.8_1069	Depositor
R, R_{free}	0.149 , 0.197 0.149 , 0.197	Depositor DCC
R_{free} test set	3921 reflections (5.00%)	wwPDB-VP
Wilson B-factor (Å ²)	14.3	Xtriage
Anisotropy	0.444	Xtriage
Bulk solvent k_{sol} (e/Å ³), B_{sol} (Å ²)	0.38 , 40.7	EDS
L-test for twinning ²	$\langle L \rangle = 0.48$, $\langle L^2 \rangle = 0.31$	Xtriage
Estimated twinning fraction	0.146 for -h-l,k,h 0.146 for l,k,-h-l 0.025 for h,-k,-h-l 0.026 for -h-l,-k,l 0.027 for l,-k,h	Xtriage
F_o, F_c correlation	0.95	EDS
Total number of atoms	12764	wwPDB-VP
Average B, all atoms (Å ²)	17.0	wwPDB-VP

Xtriage's analysis on translational NCS is as follows: *The largest off-origin peak in the Patterson function is 5.23% of the height of the origin peak. No significant pseudotranslation is detected.*

¹Intensities estimated from amplitudes.

²Theoretical values of $\langle |L| \rangle$, $\langle L^2 \rangle$ for acentric reflections are 0.5, 0.333 respectively for untwinned datasets, and 0.375, 0.2 for perfectly twinned datasets.

5 Model quality [i](#)

5.1 Standard geometry [i](#)

Bond lengths and bond angles in the following residue types are not validated in this section: MG, NA, EDO, CL, THM

The Z score for a bond length (or angle) is the number of standard deviations the observed value is removed from the expected value. A bond length (or angle) with $|Z| > 5$ is considered an outlier worth inspection. RMSZ is the root-mean-square of all Z scores of the bond lengths (or angles).

Mol	Chain	Bond lengths		Bond angles	
		RMSZ	# Z >5	RMSZ	# Z >5
1	A	0.30	0/1893	0.72	3/2562 (0.1%)
1	B	0.30	0/1937	0.72	0/2624
1	C	0.31	0/1944	0.75	1/2632 (0.0%)
1	D	0.30	0/1942	0.73	0/2630
1	E	0.30	0/1937	0.72	0/2623
1	F	0.30	0/1882	0.73	0/2547
All	All	0.30	0/11535	0.73	4/15618 (0.0%)

There are no bond length outliers.

All (4) bond angle outliers are listed below:

Mol	Chain	Res	Type	Atoms	Z	Observed(°)	Ideal(°)
1	C	47	ARG	CB-CA-C	-5.34	110.44	116.63
1	A	47	ARG	CB-CA-C	-5.23	110.56	116.63
1	A	162	TYR	CA-C-N	-5.18	113.70	119.19
1	A	162	TYR	C-N-CA	-5.18	113.70	119.19

There are no chirality outliers.

There are no planarity outliers.

5.2 Too-close contacts [i](#)

In the following table, the Non-H and H(model) columns list the number of non-hydrogen atoms and hydrogen atoms in the chain respectively. The H(added) column lists the number of hydrogen atoms added and optimized by MolProbity. The Clashes column lists the number of clashes within the asymmetric unit, whereas Symm-Clashes lists symmetry-related clashes.

Mol	Chain	Non-H	H(model)	H(added)	Clashes	Symm-Clashes
1	A	1854	0	1860	15	0

Continued on next page...

Continued from previous page...

Mol	Chain	Non-H	H(model)	H(added)	Clashes	Symm-Clashes
1	B	1900	0	1916	18	0
1	C	1906	0	1915	14	0
1	D	1907	0	1907	12	0
1	E	1902	0	1905	21	0
1	F	1851	0	1854	17	0
2	A	17	0	14	1	0
2	B	17	0	14	0	0
2	C	17	0	14	1	0
2	D	17	0	14	0	0
2	E	17	0	14	0	0
2	F	17	0	14	1	0
3	A	2	0	0	0	0
3	B	1	0	0	0	0
3	C	1	0	0	0	0
3	D	1	0	0	0	0
3	E	1	0	0	0	0
3	F	3	0	0	1	0
4	A	1	0	0	0	0
4	F	1	0	0	0	0
5	B	1	0	0	0	0
5	C	1	0	0	0	0
5	E	1	0	0	0	0
6	C	12	0	18	2	0
6	E	4	0	6	3	0
7	A	199	0	0	1	0
7	B	235	0	0	0	0
7	C	262	0	0	1	0
7	D	254	0	0	1	0
7	E	196	0	0	1	0
7	F	166	0	0	0	0
All	All	12764	0	11465	90	0

The all-atom clashscore is defined as the number of clashes found per 1000 atoms (including hydrogen atoms). The all-atom clashscore for this structure is 4.

The worst 5 of 90 close contacts within the same asymmetric unit are listed below, sorted by their clash magnitude.

Atom-1	Atom-2	Interatomic distance (Å)	Clash overlap (Å)
1:C:48:GLU:HG3	1:D:48:GLU:HB3	1.69	0.73
6:E:302:EDO:H12	1:F:120:LEU:HD22	1.74	0.70
1:E:48:GLU:HB3	1:F:48:GLU:HB3	1.75	0.69

Continued on next page...

Continued from previous page...

Atom-1	Atom-2	Interatomic distance (Å)	Clash overlap (Å)
1:C:174[B]:ARG:NH1	7:C:649:HOH:O	2.25	0.69
1:A:235:GLU:HG2	1:A:238:ALA:H	1.58	0.68

There are no symmetry-related clashes.

5.3 Torsion angles [i](#)

5.3.1 Protein backbone [i](#)

In the following table, the Percentiles column shows the percent Ramachandran outliers of the chain as a percentile score with respect to all X-ray entries followed by that with respect to entries of similar resolution.

The Analysed column shows the number of residues for which the backbone conformation was analysed, and the total number of residues.

Mol	Chain	Analysed	Favoured	Allowed	Outliers	Percentiles
1	A	244/253 (96%)	240 (98%)	3 (1%)	1 (0%)	30 28
1	B	252/253 (100%)	248 (98%)	3 (1%)	1 (0%)	30 28
1	C	252/253 (100%)	245 (97%)	6 (2%)	1 (0%)	30 28
1	D	252/253 (100%)	249 (99%)	2 (1%)	1 (0%)	30 28
1	E	252/253 (100%)	247 (98%)	4 (2%)	1 (0%)	30 28
1	F	243/253 (96%)	239 (98%)	3 (1%)	1 (0%)	30 28
All	All	1495/1518 (98%)	1468 (98%)	21 (1%)	6 (0%)	30 28

5 of 6 Ramachandran outliers are listed below:

Mol	Chain	Res	Type
1	B	162	TYR
1	A	162	TYR
1	C	162	TYR
1	D	162	TYR
1	E	162	TYR

5.3.2 Protein sidechains [i](#)

In the following table, the Percentiles column shows the percent sidechain outliers of the chain as a percentile score with respect to all X-ray entries followed by that with respect to entries of similar

resolution.

The Analysed column shows the number of residues for which the sidechain conformation was analysed, and the total number of residues.

Mol	Chain	Analysed	Rotameric	Outliers	Percentiles	
1	A	199/203 (98%)	195 (98%)	4 (2%)	48	55
1	B	204/203 (100%)	199 (98%)	5 (2%)	42	47
1	C	204/203 (100%)	203 (100%)	1 (0%)	81	87
1	D	204/203 (100%)	203 (100%)	1 (0%)	81	87
1	E	204/203 (100%)	199 (98%)	5 (2%)	42	47
1	F	198/203 (98%)	196 (99%)	2 (1%)	68	76
All	All	1213/1218 (100%)	1195 (98%)	18 (2%)	59	65

5 of 18 residues with a non-rotameric sidechain are listed below:

Mol	Chain	Res	Type
1	E	225[B]	LYS
1	F	237	GLU
1	F	195	GLU
1	B	253	LYS
1	E	225[A]	LYS

Sometimes sidechains can be flipped to improve hydrogen bonding and reduce clashes. All (3) such sidechains are listed below:

Mol	Chain	Res	Type
1	A	82	GLN
1	E	180	GLN
1	F	102	ASN

5.3.3 RNA [i](#)

There are no RNA molecules in this entry.

5.4 Non-standard residues in protein, DNA, RNA chains [i](#)

There are no non-standard protein/DNA/RNA residues in this entry.

5.5 Carbohydrates [i](#)

There are no oligosaccharides in this entry.

5.6 Ligand geometry [i](#)

Of 24 ligands modelled in this entry, 14 are monoatomic - leaving 10 for Mogul analysis.

In the following table, the Counts columns list the number of bonds (or angles) for which Mogul statistics could be retrieved, the number of bonds (or angles) that are observed in the model and the number of bonds (or angles) that are defined in the Chemical Component Dictionary. The Link column lists molecule types, if any, to which the group is linked. The Z score for a bond length (or angle) is the number of standard deviations the observed value is removed from the expected value. A bond length (or angle) with $|Z| > 2$ is considered an outlier worth inspection. RMSZ is the root-mean-square of all Z scores of the bond lengths (or angles).

Mol	Type	Chain	Res	Link	Bond lengths			Bond angles		
					Counts	RMSZ	# Z > 2	Counts	RMSZ	# Z > 2
2	THM	F	301	-	18,18,18	1.98	7 (38%)	26,26,26	2.12	6 (23%)
2	THM	C	301	-	18,18,18	2.02	8 (44%)	26,26,26	2.14	6 (23%)
6	EDO	C	302	-	3,3,3	0.45	0	2,2,2	0.35	0
2	THM	E	301	-	18,18,18	2.04	8 (44%)	26,26,26	2.23	7 (26%)
6	EDO	C	303	-	3,3,3	0.41	0	2,2,2	0.39	0
6	EDO	C	304	-	3,3,3	0.44	0	2,2,2	0.36	0
2	THM	B	301	-	18,18,18	2.02	8 (44%)	26,26,26	2.20	7 (26%)
6	EDO	E	302	-	3,3,3	0.41	0	2,2,2	0.36	0
2	THM	D	301	-	18,18,18	2.02	8 (44%)	26,26,26	2.09	7 (26%)
2	THM	A	301	-	18,18,18	1.99	7 (38%)	26,26,26	2.17	8 (30%)

In the following table, the Chirals column lists the number of chiral outliers, the number of chiral centers analysed, the number of these observed in the model and the number defined in the Chemical Component Dictionary. Similar counts are reported in the Torsion and Rings columns. '-' means no outliers of that kind were identified.

Mol	Type	Chain	Res	Link	Chirals	Torsions	Rings
2	THM	F	301	-	-	2/6/18/18	0/2/2/2
2	THM	C	301	-	-	2/6/18/18	0/2/2/2
6	EDO	C	302	-	-	0/1/1/1	-
2	THM	E	301	-	-	2/6/18/18	0/2/2/2
6	EDO	C	303	-	-	0/1/1/1	-
6	EDO	C	304	-	-	1/1/1/1	-
2	THM	B	301	-	-	2/6/18/18	0/2/2/2

Continued on next page...

Continued from previous page...

Mol	Type	Chain	Res	Link	Chirals	Torsions	Rings
6	EDO	E	302	-	-	0/1/1/1	-
2	THM	D	301	-	-	2/6/18/18	0/2/2/2
2	THM	A	301	-	-	2/6/18/18	0/2/2/2

The worst 5 of 46 bond length outliers are listed below:

Mol	Chain	Res	Type	Atoms	Z	Observed(Å)	Ideal(Å)
2	E	301	THM	C6-N1	4.09	1.45	1.38
2	B	301	THM	C6-N1	4.04	1.44	1.38
2	C	301	THM	C6-N1	4.02	1.44	1.38
2	D	301	THM	C6-N1	4.00	1.44	1.38
2	F	301	THM	C6-N1	3.92	1.44	1.38

The worst 5 of 41 bond angle outliers are listed below:

Mol	Chain	Res	Type	Atoms	Z	Observed(°)	Ideal(°)
2	E	301	THM	C4-N3-C2	-5.41	120.25	127.34
2	B	301	THM	C5-C4-N3	5.33	119.95	115.32
2	B	301	THM	C4-N3-C2	-5.26	120.45	127.34
2	E	301	THM	C5-C4-N3	5.24	119.88	115.32
2	C	301	THM	C5-C4-N3	5.18	119.82	115.32

There are no chirality outliers.

5 of 13 torsion outliers are listed below:

Mol	Chain	Res	Type	Atoms
2	A	301	THM	C2'-C1'-N1-C2
2	F	301	THM	C2'-C1'-N1-C2
2	C	301	THM	C2'-C1'-N1-C2
2	D	301	THM	C2'-C1'-N1-C2
2	A	301	THM	C2'-C1'-N1-C6

There are no ring outliers.

6 monomers are involved in 7 short contacts:

Mol	Chain	Res	Type	Clashes	Symm-Clashes
2	F	301	THM	1	0
2	C	301	THM	1	0
6	C	303	EDO	1	0
6	C	304	EDO	1	0

Continued on next page...

Continued from previous page...

Mol	Chain	Res	Type	Clashes	Symm-Clashes
6	E	302	EDO	3	0
2	A	301	THM	1	0

5.7 Other polymers [i](#)

There are no such residues in this entry.

5.8 Polymer linkage issues [i](#)

There are no chain breaks in this entry.

6 Fit of model and data [i](#)

6.1 Protein, DNA and RNA chains [i](#)

In the following table, the column labelled '#RSRZ > 2' contains the number (and percentage) of RSRZ outliers, followed by percent RSRZ outliers for the chain as percentile scores relative to all X-ray entries and entries of similar resolution. The OWAB column contains the minimum, median, 95th percentile and maximum values of the occupancy-weighted average B-factor per residue. The column labelled 'Q < 0.9' lists the number of (and percentage) of residues with an average occupancy less than 0.9.

Mol	Chain	Analysed	<RSRZ>	#RSRZ > 2		OWAB(Å ²)	Q < 0.9	
1	A	245/253 (96%)	-0.69	0	100	100	9, 14, 26, 50	3 (1%)
1	B	252/253 (99%)	-0.66	0	100	100	9, 15, 32, 49	2 (0%)
1	C	251/253 (99%)	-0.77	0	100	100	8, 13, 23, 47	3 (1%)
1	D	251/253 (99%)	-0.76	0	100	100	6, 13, 23, 43	3 (1%)
1	E	251/253 (99%)	-0.60	2 (0%)	82	85	8, 15, 32, 58	3 (1%)
1	F	246/253 (97%)	-0.66	2 (0%)	82	85	9, 15, 26, 61	1 (0%)
All	All	1496/1518 (98%)	-0.69	4 (0%)	90	91	6, 14, 26, 61	15 (1%)

All (4) RSRZ outliers are listed below:

Mol	Chain	Res	Type	RSRZ
1	E	226	GLU	2.3
1	F	3	LYS	2.3
1	F	237	GLU	2.1
1	E	230	HIS	2.0

6.2 Non-standard residues in protein, DNA, RNA chains [i](#)

There are no non-standard protein/DNA/RNA residues in this entry.

6.3 Carbohydrates [i](#)

There are no oligosaccharides in this entry.

6.4 Ligands [i](#)

In the following table, the Atoms column lists the number of modelled atoms in the group and the number defined in the chemical component dictionary. The B-factors column lists the minimum,

median, 95th percentile and maximum values of B factors of atoms in the group. The column labelled 'Q< 0.9' lists the number of atoms with occupancy less than 0.9.

Mol	Type	Chain	Res	Atoms	RSCC	RSR	B-factors(Å ²)	Q<0.9
6	EDO	C	304	4/4	0.82	0.12	30,34,35,43	0
6	EDO	C	302	4/4	0.87	0.13	23,30,32,33	0
2	THM	E	301	17/17	0.89	0.08	14,26,36,43	0
4	MG	A	304	1/1	0.90	0.07	30,30,30,30	0
2	THM	B	301	17/17	0.92	0.08	15,20,27,32	0
6	EDO	C	303	4/4	0.92	0.14	21,22,22,28	0
4	MG	F	305	1/1	0.92	0.08	30,30,30,30	0
6	EDO	E	302	4/4	0.92	0.14	18,19,27,33	0
2	THM	A	301	17/17	0.94	0.06	10,13,19,25	0
2	THM	F	301	17/17	0.94	0.06	11,14,20,26	0
2	THM	D	301	17/17	0.95	0.05	8,15,21,24	0
3	CL	F	304	1/1	0.95	0.09	33,33,33,33	0
5	NA	E	304	1/1	0.96	0.11	18,18,18,18	0
5	NA	B	303	1/1	0.97	0.10	18,18,18,18	0
2	THM	C	301	17/17	0.97	0.04	9,13,19,21	0
5	NA	C	306	1/1	0.98	0.13	16,16,16,16	0
3	CL	F	303	1/1	0.98	0.08	35,35,35,35	0
3	CL	F	302	1/1	0.99	0.05	16,16,16,16	0
3	CL	A	303	1/1	0.99	0.04	37,37,37,37	0
3	CL	B	302	1/1	0.99	0.03	24,24,24,24	0
3	CL	E	303	1/1	0.99	0.02	30,30,30,30	0
3	CL	C	305	1/1	1.00	0.03	18,18,18,18	0
3	CL	D	302	1/1	1.00	0.03	17,17,17,17	0
3	CL	A	302	1/1	1.00	0.06	16,16,16,16	0

6.5 Other polymers [\(i\)](#)

There are no such residues in this entry.