



wwPDB X-ray Structure Validation Summary Report ⓘ

Oct 23, 2024 – 10:01 PM EDT

PDB ID : 2G7Z
Title : Conserved DegV-like Protein of Unknown Function from Streptococcus pyogenes M1 GAS Binds Long-chain Fatty Acids
Authors : Nocek, B.; Volkart, L.; Clancy, S.; Joachimiak, A.; Midwest Center for Structural Genomics (MCSG)
Deposited on : 2006-03-01
Resolution : 2.05 Å(reported)

This is a wwPDB X-ray Structure Validation Summary Report for a publicly released PDB entry.

We welcome your comments at validation@mail.wwpdb.org

A user guide is available at

<https://www.wwpdb.org/validation/2017/XrayValidationReportHelp>

with specific help available everywhere you see the ⓘ symbol.

The types of validation reports are described at

<http://www.wwpdb.org/validation/2017/FAQs#types>.

The following versions of software and data (see [references ⓘ](#)) were used in the production of this report:

MolProbity	:	4.02b-467
Mogul	:	2022.3.0, CSD as543be (2022)
Xtriage (Phenix)	:	1.20.1
EDS	:	3.0
buster-report	:	1.1.7 (2018)
Percentile statistics	:	20231227.v01 (using entries in the PDB archive December 27th 2023)
CCP4	:	9.0.003 (Gargrove)
Density-Fitness	:	1.0.11
Ideal geometry (proteins)	:	Engh & Huber (2001)
Ideal geometry (DNA, RNA)	:	Parkinson et al. (1996)
Validation Pipeline (wwPDB-VP)	:	2.39

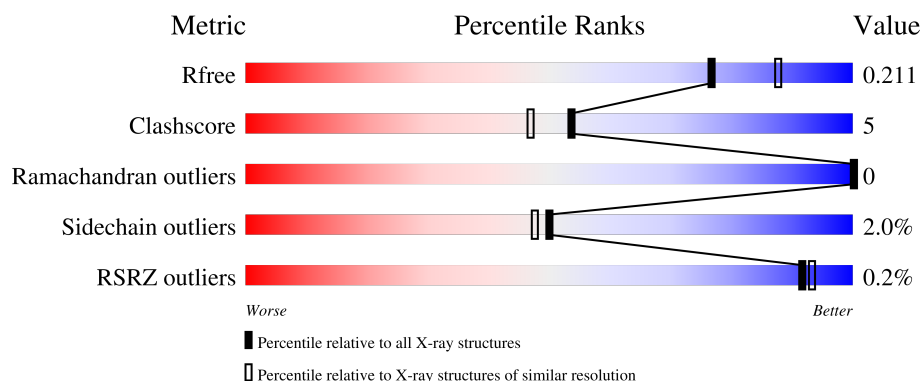
1 Overall quality at a glance ⓘ

The following experimental techniques were used to determine the structure:

X-RAY DIFFRACTION

The reported resolution of this entry is 2.05 Å.

Percentile scores (ranging between 0-100) for global validation metrics of the entry are shown in the following graphic. The table shows the number of entries on which the scores are based.



Metric	Whole archive (#Entries)	Similar resolution (#Entries, resolution range(Å))
R_{free}	164625	2096 (2.04-2.04)
Clashscore	180529	2229 (2.04-2.04)
Ramachandran outliers	177936	2217 (2.04-2.04)
Sidechain outliers	177891	2217 (2.04-2.04)
RSRZ outliers	164620	2096 (2.04-2.04)

The table below summarises the geometric issues observed across the polymeric chains and their fit to the electron density. The red, orange, yellow and green segments of the lower bar indicate the fraction of residues that contain outliers for ≥ 3 , 2, 1 and 0 types of geometric quality criteria respectively. A grey segment represents the fraction of residues that are not modelled. The numeric value for each fraction is indicated below the corresponding segment, with a dot representing fractions $\leq 5\%$. The upper red bar (where present) indicates the fraction of residues that have poor fit to the electron density. The numeric value is given above the bar.

Mol	Chain	Length	Quality of chain
1	A	282	
1	B	282	

The following table lists non-polymeric compounds, carbohydrate monomers and non-standard residues in protein, DNA, RNA chains that are outliers for geometric or electron-density-fit criteria:

Mol	Type	Chain	Res	Chirality	Geometry	Clashes	Electron density
6	GOL	A	2647	-	-	X	-
6	GOL	B	2648	-	-	X	-

2 Entry composition

There are 7 unique types of molecules in this entry. The entry contains 4714 atoms, of which 0 are hydrogens and 0 are deuteriums.

In the tables below, the ZeroOcc column contains the number of atoms modelled with zero occupancy, the AltConf column contains the number of residues with at least one atom in alternate conformation and the Trace column contains the number of residues modelled with at most 2 atoms.

- Molecule 1 is a protein called conserved hypothetical protein SPy1493.

Mol	Chain	Residues	Atoms					ZeroOcc	AltConf	Trace
1	A	275	Total	C	N	O	Se	3	3	0
			2093	1333	347	405	8			
1	B	275	Total	C	N	O	Se	3	0	0
			2071	1317	345	402	7			

There are 20 discrepancies between the modelled and reference sequences:

Chain	Residue	Modelled	Actual	Comment	Reference
A	-2	SER	-	cloning artifact	UNP P67372
A	-1	ASN	-	cloning artifact	UNP P67372
A	0	ALA	-	cloning artifact	UNP P67372
A	1	MSE	MET	modified residue	UNP P67372
A	32	MSE	MET	modified residue	UNP P67372
A	53	MSE	MET	modified residue	UNP P67372
A	124	MSE	MET	modified residue	UNP P67372
A	134	MSE	MET	modified residue	UNP P67372
A	190	MSE	MET	modified residue	UNP P67372
A	275	MSE	MET	modified residue	UNP P67372
B	-2	SER	-	cloning artifact	UNP P67372
B	-1	ASN	-	cloning artifact	UNP P67372
B	0	ALA	-	cloning artifact	UNP P67372
B	1	MSE	MET	modified residue	UNP P67372
B	32	MSE	MET	modified residue	UNP P67372
B	53	MSE	MET	modified residue	UNP P67372
B	124	MSE	MET	modified residue	UNP P67372
B	134	MSE	MET	modified residue	UNP P67372
B	190	MSE	MET	modified residue	UNP P67372
B	275	MSE	MET	modified residue	UNP P67372

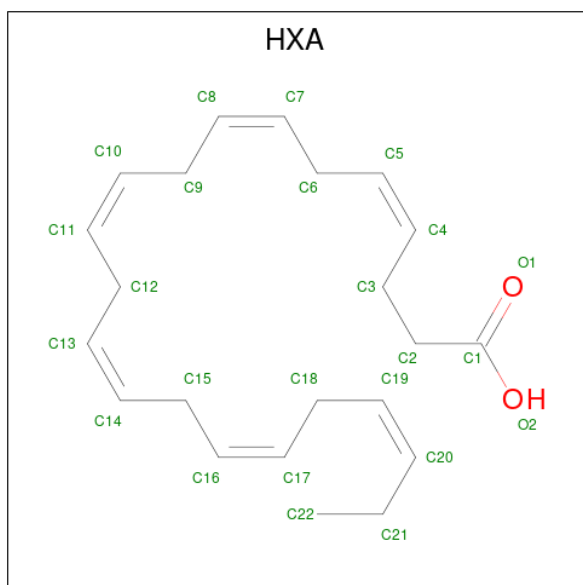
- Molecule 2 is ZINC ION (three-letter code: ZN) (formula: Zn).

Mol	Chain	Residues	Atoms		ZeroOcc	AltConf
2	A	11	Total	Zn	0	0
			11	11		
2	B	5	Total	Zn	0	0
			5	5		

- Molecule 3 is CHLORIDE ION (three-letter code: CL) (formula: Cl).

Mol	Chain	Residues	Atoms		ZeroOcc	AltConf
3	A	1	Total	Cl	0	0
			1	1		

- Molecule 4 is DOCOSA-4,7,10,13,16,19-HEXAENOIC ACID (three-letter code: HXA) (formula: C₂₂H₃₂O₂).



Mol	Chain	Residues	Atoms			ZeroOcc	AltConf
4	A	1	Total	C	O	0	0
			19	17	2		
4	B	1	Total	C	O	0	0
			19	17	2		

- Molecule 5 is 2-AMINO-2-HYDROXYMETHYL-PROPANE-1,3-DIOL (three-letter code: TRS) (formula: C₄H₁₂NO₃).



Mol	Chain	Residues	Atoms				ZeroOcc	AltConf
5	A	1	Total	C	N	O	0	0
			8	4	1	3		
5	B	1	Total	C	N	O	0	0
			8	4	1	3		

- Molecule 6 is GLYCEROL (three-letter code: GOL) (formula: C₃H₈O₃).



Mol	Chain	Residues	Atoms			ZeroOcc	AltConf
6	A	1	Total	C	O	0	0
			6	3	3		
6	B	1	Total	C	O	0	0
			6	3	3		

Continued on next page...

Continued from previous page...

Mol	Chain	Residues	Atoms			ZeroOcc	AltConf
6	B	1	Total	C	O	0	0
			6	3	3		


- Molecule 7 is water.

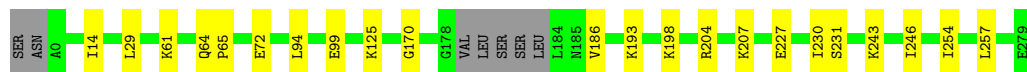
Mol	Chain	Residues	Atoms		ZeroOcc	AltConf
7	A	244	Total	O	0	0
			244	244		
7	B	217	Total	O	0	0
			217	217		

3 Residue-property plots [i](#)

These plots are drawn for all protein, RNA, DNA and oligosaccharide chains in the entry. The first graphic for a chain summarises the proportions of the various outlier classes displayed in the second graphic. The second graphic shows the sequence view annotated by issues in geometry and electron density. Residues are color-coded according to the number of geometric quality criteria for which they contain at least one outlier: green = 0, yellow = 1, orange = 2 and red = 3 or more. A red dot above a residue indicates a poor fit to the electron density ($RSRZ > 2$). Stretches of 2 or more consecutive residues without any outlier are shown as a green connector. Residues present in the sample, but not in the model, are shown in grey.

- Molecule 1: conserved hypothetical protein SPy1493

Chain A:  90% 8% .



- Molecule 1: conserved hypothetical protein SPy1493

Chain B:  89% 8% ..



4 Data and refinement statistics

Property	Value	Source
Space group	P 21 21 21	Depositor
Cell constants a, b, c, α , β , γ	74.13Å 74.09Å 128.60Å 90.00° 90.00° 90.00°	Depositor
Resolution (Å)	40.00 – 2.05 40.00 – 2.05	Depositor EDS
% Data completeness (in resolution range)	99.5 (40.00-2.05) 99.4 (40.00-2.05)	Depositor EDS
R_{merge}	0.17	Depositor
R_{sym}	(Not available)	Depositor
$\langle I/\sigma(I) \rangle$ ¹	2.23 (at 2.05Å)	Xtriage
Refinement program	REFMAC 5.2.0005	Depositor
R, R_{free}	0.165 , 0.207 0.167 , 0.211	Depositor DCC
R_{free} test set	2266 reflections (5.03%)	wwPDB-VP
Wilson B-factor (Å ²)	17.8	Xtriage
Anisotropy	0.554	Xtriage
Bulk solvent k_{sol} (e/Å ³), B_{sol} (Å ²)	0.36 , 22.4	EDS
L-test for twinning ²	$\langle L \rangle = 0.49$, $\langle L^2 \rangle = 0.33$	Xtriage
Estimated twinning fraction	0.487 for k,h,-l	Xtriage
F_o, F_c correlation	0.96	EDS
Total number of atoms	4714	wwPDB-VP
Average B, all atoms (Å ²)	15.0	wwPDB-VP

Xtriage's analysis on translational NCS is as follows: *The largest off-origin peak in the Patterson function is 6.32% of the height of the origin peak. No significant pseudotranslation is detected.*

¹Intensities estimated from amplitudes.

²Theoretical values of $\langle |L| \rangle$, $\langle L^2 \rangle$ for acentric reflections are 0.5, 0.333 respectively for untwinned datasets, and 0.375, 0.2 for perfectly twinned datasets.

5 Model quality [i](#)

5.1 Standard geometry [i](#)

Bond lengths and bond angles in the following residue types are not validated in this section: ZN, TRS, HXA, CL, GOL

The Z score for a bond length (or angle) is the number of standard deviations the observed value is removed from the expected value. A bond length (or angle) with $|Z| > 5$ is considered an outlier worth inspection. RMSZ is the root-mean-square of all Z scores of the bond lengths (or angles).

Mol	Chain	Bond lengths		Bond angles	
		RMSZ	$\# Z > 5$	RMSZ	$\# Z > 5$
1	A	0.69	1/2116 (0.0%)	0.62	0/2847
1	B	0.65	1/2091 (0.0%)	0.66	2/2814 (0.1%)
All	All	0.67	2/4207 (0.0%)	0.64	2/5661 (0.0%)

All (2) bond length outliers are listed below:

Mol	Chain	Res	Type	Atoms	Z	Observed(Å)	Ideal(Å)
1	A	72	GLU	CG-CD	12.31	1.70	1.51
1	B	185	ASN	C-N	7.60	1.51	1.34

All (2) bond angle outliers are listed below:

Mol	Chain	Res	Type	Atoms	Z	Observed(°)	Ideal(°)
1	B	185	ASN	O-C-N	8.81	136.79	122.70
1	B	185	ASN	CA-C-N	-6.88	102.08	117.20

There are no chirality outliers.

There are no planarity outliers.

5.2 Too-close contacts [i](#)

In the following table, the Non-H and H(model) columns list the number of non-hydrogen atoms and hydrogen atoms in the chain respectively. The H(added) column lists the number of hydrogen atoms added and optimized by MolProbity. The Clashes column lists the number of clashes within the asymmetric unit, whereas Symm-Clashes lists symmetry-related clashes.

Mol	Chain	Non-H	H(model)	H(added)	Clashes	Symm-Clashes
1	A	2093	0	2185	16	0
1	B	2071	0	2153	22	0

Continued on next page...

Continued from previous page...

Mol	Chain	Non-H	H(model)	H(added)	Clashes	Symm-Clashes
2	A	11	0	0	0	0
2	B	5	0	0	0	0
3	A	1	0	0	0	0
4	A	19	0	21	4	0
4	B	19	0	21	2	0
5	A	8	0	12	4	0
5	B	8	0	12	4	0
6	A	6	0	8	5	0
6	B	12	0	16	8	0
7	A	244	0	0	4	1
7	B	217	0	0	2	1
All	All	4714	0	4428	42	1

The all-atom clashscore is defined as the number of clashes found per 1000 atoms (including hydrogen atoms). The all-atom clashscore for this structure is 5.

The worst 5 of 42 close contacts within the same asymmetric unit are listed below, sorted by their clash magnitude.

Atom-1	Atom-2	Interatomic distance (Å)	Clash overlap (Å)
1:A:61:LYS:HD3	6:A:2647:GOL:H2	1.34	1.08
4:A:9136:HXA:O2	5:A:5081:TRS:H12	1.57	1.04
1:B:61:LYS:HD3	6:B:2648:GOL:H12	1.36	1.03
1:A:170:GLY:HA2	6:A:2647:GOL:H32	1.38	1.03
1:A:170:GLY:CA	6:A:2647:GOL:H32	1.97	0.94

All (1) symmetry-related close contacts are listed below. The label for Atom-2 includes the symmetry operator and encoded unit-cell translations to be applied.

Atom-1	Atom-2	Interatomic distance (Å)	Clash overlap (Å)
7:A:9137:HOH:O	7:B:8216:HOH:O[2_664]	2.10	0.10

5.3 Torsion angles [i](#)

5.3.1 Protein backbone [i](#)

In the following table, the Percentiles column shows the percent Ramachandran outliers of the chain as a percentile score with respect to all X-ray entries followed by that with respect to entries of similar resolution.

The Analysed column shows the number of residues for which the backbone conformation was

analysed, and the total number of residues.

Mol	Chain	Analysed	Favoured	Allowed	Outliers	Percentiles	
1	A	274/282 (97%)	268 (98%)	6 (2%)	0	100	100
1	B	271/282 (96%)	264 (97%)	7 (3%)	0	100	100
All	All	545/564 (97%)	532 (98%)	13 (2%)	0	100	100

There are no Ramachandran outliers to report.

5.3.2 Protein sidechains ⓘ

In the following table, the Percentiles column shows the percent sidechain outliers of the chain as a percentile score with respect to all X-ray entries followed by that with respect to entries of similar resolution.

The Analysed column shows the number of residues for which the sidechain conformation was analysed, and the total number of residues.

Mol	Chain	Analysed	Rotameric	Outliers	Percentiles	
1	A	229/226 (101%)	226 (99%)	3 (1%)	65	66
1	B	225/226 (100%)	219 (97%)	6 (3%)	40	35
All	All	454/452 (100%)	445 (98%)	9 (2%)	50	47

5 of 9 residues with a non-rotameric sidechain are listed below:

Mol	Chain	Res	Type
1	B	204	ARG
1	B	211	LYS
1	B	36	LYS
1	B	159	ILE
1	B	192	LEU

Sometimes sidechains can be flipped to improve hydrogen bonding and reduce clashes. 5 of 8 such sidechains are listed below:

Mol	Chain	Res	Type
1	B	166	ASN
1	B	64	GLN
1	A	252	HIS
1	A	166	ASN
1	A	264	GLN

5.3.3 RNA ⓘ

There are no RNA molecules in this entry.

5.4 Non-standard residues in protein, DNA, RNA chains ⓘ

There are no non-standard protein/DNA/RNA residues in this entry.

5.5 Carbohydrates ⓘ

There are no oligosaccharides in this entry.

5.6 Ligand geometry ⓘ

Of 24 ligands modelled in this entry, 17 are monoatomic - leaving 7 for Mogul analysis.

In the following table, the Counts columns list the number of bonds (or angles) for which Mogul statistics could be retrieved, the number of bonds (or angles) that are observed in the model and the number of bonds (or angles) that are defined in the Chemical Component Dictionary. The Link column lists molecule types, if any, to which the group is linked. The Z score for a bond length (or angle) is the number of standard deviations the observed value is removed from the expected value. A bond length (or angle) with $|Z| > 2$ is considered an outlier worth inspection. RMSZ is the root-mean-square of all Z scores of the bond lengths (or angles).

Mol	Type	Chain	Res	Link	Bond lengths			Bond angles		
					Counts	RMSZ	# Z > 2	Counts	RMSZ	# Z > 2
6	GOL	B	2648	-	5,5,5	0.90	0	5,5,5	1.31	1 (20%)
4	HXA	B	8136	-	18,18,23	2.23	5 (27%)	18,18,23	1.23	1 (5%)
6	GOL	A	2647	-	5,5,5	0.91	0	5,5,5	1.02	0
5	TRS	B	5080	-	7,7,7	0.23	0	9,9,9	1.34	2 (22%)
5	TRS	A	5081	-	7,7,7	0.37	0	9,9,9	1.17	0
6	GOL	B	2649	-	5,5,5	0.36	0	5,5,5	0.55	0
4	HXA	A	9136	-	18,18,23	2.27	5 (27%)	18,18,23	1.19	2 (11%)

In the following table, the Chirals column lists the number of chiral outliers, the number of chiral centers analysed, the number of these observed in the model and the number defined in the Chemical Component Dictionary. Similar counts are reported in the Torsion and Rings columns. '-' means no outliers of that kind were identified.

Mol	Type	Chain	Res	Link	Chirals	Torsions	Rings
6	GOL	B	2648	-	-	4/4/4/4	-
4	HXA	B	8136	-	-	12/16/16/21	-

Continued on next page...

Continued from previous page...

Mol	Type	Chain	Res	Link	Chirals	Torsions	Rings
6	GOL	A	2647	-	-	2/4/4/4	-
5	TRS	B	5080	-	-	6/9/9/9	-
5	TRS	A	5081	-	-	9/9/9/9	-
6	GOL	B	2649	-	-	2/4/4/4	-
4	HXA	A	9136	-	-	9/16/16/21	-

The worst 5 of 10 bond length outliers are listed below:

Mol	Chain	Res	Type	Atoms	Z	Observed(Å)	Ideal(Å)
4	B	8136	HXA	C11-C10	4.58	1.57	1.31
4	A	9136	HXA	C11-C10	4.44	1.56	1.31
4	B	8136	HXA	C14-C13	4.27	1.55	1.31
4	A	9136	HXA	C8-C7	4.15	1.55	1.31
4	A	9136	HXA	C14-C13	4.15	1.55	1.31

The worst 5 of 6 bond angle outliers are listed below:

Mol	Chain	Res	Type	Atoms	Z	Observed(°)	Ideal(°)
4	B	8136	HXA	C15-C16-C17	-2.88	109.18	127.02
4	A	9136	HXA	C10-C9-C8	2.65	125.09	112.02
4	A	9136	HXA	C15-C16-C17	-2.44	111.91	127.02
5	B	5080	TRS	C3-C-C1	-2.34	104.43	110.66
6	B	2648	GOL	O1-C1-C2	2.27	120.57	110.38

There are no chirality outliers.

5 of 44 torsion outliers are listed below:

Mol	Chain	Res	Type	Atoms
4	B	8136	HXA	C11-C10-C9-C8
4	B	8136	HXA	C11-C12-C13-C14
5	A	5081	TRS	C3-C-C1-O1
5	A	5081	TRS	C1-C-C2-O2
5	A	5081	TRS	C3-C-C2-O2

There are no ring outliers.

6 monomers are involved in 23 short contacts:

Mol	Chain	Res	Type	Clashes	Symm-Clashes
6	B	2648	GOL	8	0
4	B	8136	HXA	2	0

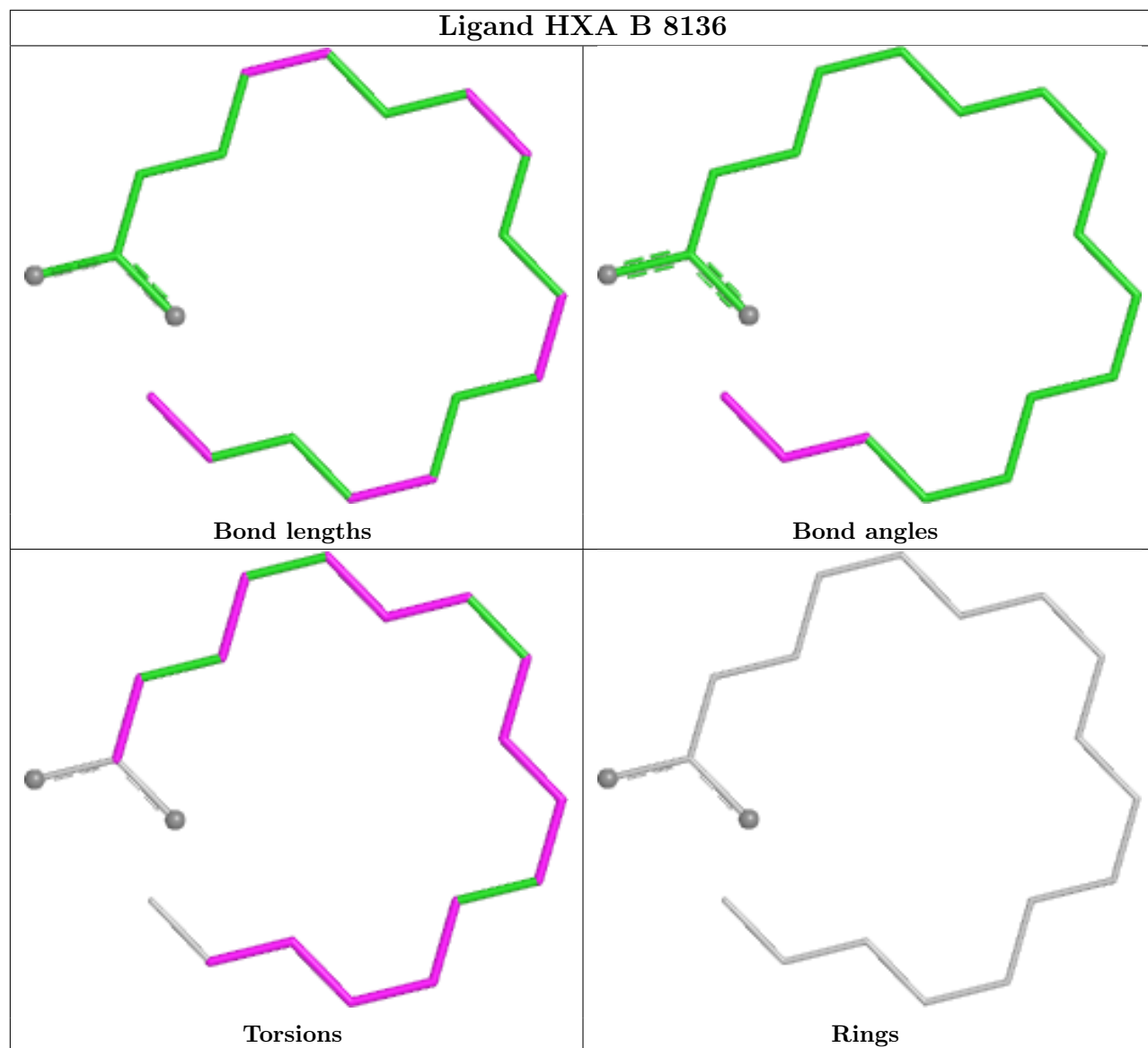
Continued on next page...

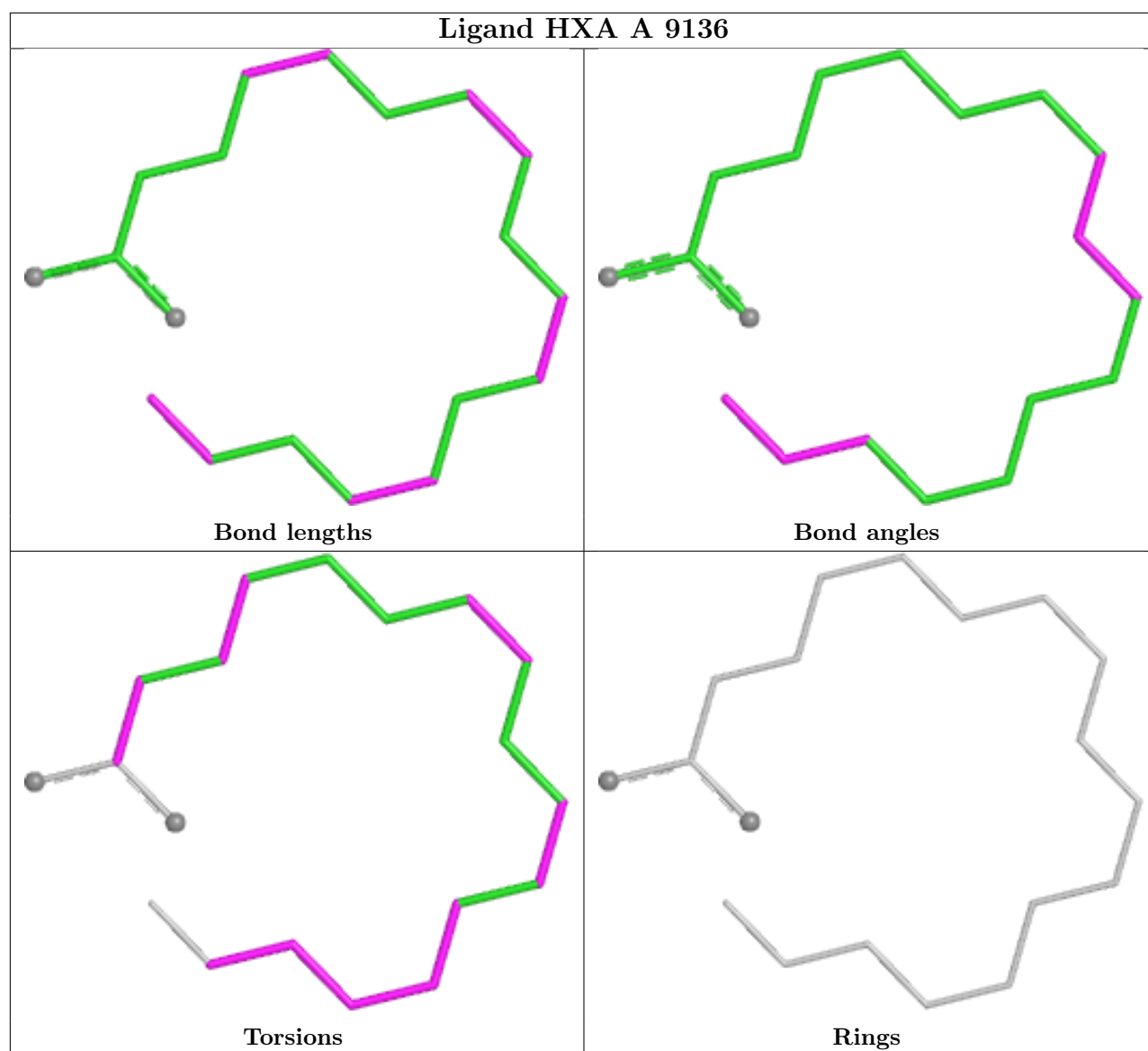
Continued from previous page...

Mol	Chain	Res	Type	Clashes	Symm-Clashes
6	A	2647	GOL	5	0
5	B	5080	TRS	4	0
5	A	5081	TRS	4	0
4	A	9136	HXA	4	0

The following is a two-dimensional graphical depiction of Mogul quality analysis of bond lengths, bond angles, torsion angles, and ring geometry for all instances of the Ligand of Interest. In addition, ligands with molecular weight > 250 and outliers as shown on the validation Tables will also be included. For torsion angles, if less than 5% of the Mogul distribution of torsion angles is within 10 degrees of the torsion angle in question, then that torsion angle is considered an outlier. Any bond that is central to one or more torsion angles identified as an outlier by Mogul will be highlighted in the graph. For rings, the root-mean-square deviation (RMSD) between the ring in question and similar rings identified by Mogul is calculated over all ring torsion angles. If the average RMSD is greater than 60 degrees and the minimal RMSD between the ring in question and any Mogul-identified rings is also greater than 60 degrees, then that ring is considered an outlier. The outliers are highlighted in purple. The color gray indicates Mogul did not find sufficient equivalents in the CSD to analyse the geometry.

Ligand HXA B 8136





5.7 Other polymers [i](#)

There are no such residues in this entry.

5.8 Polymer linkage issues [i](#)

There are no chain breaks in this entry.

6 Fit of model and data [i](#)

6.1 Protein, DNA and RNA chains [i](#)

In the following table, the column labelled ‘#RSRZ> 2’ contains the number (and percentage) of RSRZ outliers, followed by percent RSRZ outliers for the chain as percentile scores relative to all X-ray entries and entries of similar resolution. The OWAB column contains the minimum, median, 95th percentile and maximum values of the occupancy-weighted average B-factor per residue. The column labelled ‘Q< 0.9’ lists the number of (and percentage) of residues with an average occupancy less than 0.9.

Mol	Chain	Analysed	<RSRZ>	#RSRZ>2			OWAB(Å ²)	Q<0.9
1	A	268/282 (95%)	-1.68	0	100	100	6, 13, 26, 33	3 (1%)
1	B	268/282 (95%)	-1.66	1 (0%)	89	90	5, 12, 25, 34	1 (0%)
All	All	536/564 (95%)	-1.67	1 (0%)	92	93	5, 13, 26, 34	4 (0%)

All (1) RSRZ outliers are listed below:

Mol	Chain	Res	Type	RSRZ
1	B	178	GLY	2.1

6.2 Non-standard residues in protein, DNA, RNA chains [i](#)

There are no non-standard protein/DNA/RNA residues in this entry.

6.3 Carbohydrates [i](#)

There are no monosaccharides in this entry.

6.4 Ligands [i](#)

In the following table, the Atoms column lists the number of modelled atoms in the group and the number defined in the chemical component dictionary. The B-factors column lists the minimum, median, 95th percentile and maximum values of B factors of atoms in the group. The column labelled ‘Q< 0.9’ lists the number of atoms with occupancy less than 0.9.

Mol	Type	Chain	Res	Atoms	RSCC	RSR	B-factors(Å ²)	Q<0.9
5	TRS	A	5081	8/8	0.97	0.07	30,32,32,32	0
2	ZN	A	6007	1/1	0.98	0.04	93,93,93,93	0
5	TRS	B	5080	8/8	0.98	0.07	26,30,31,32	0
6	GOL	A	2647	6/6	0.98	0.08	14,24,26,31	0

Continued on next page...

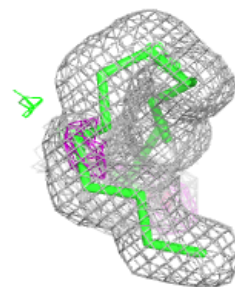
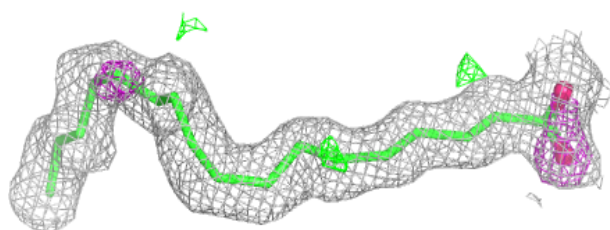
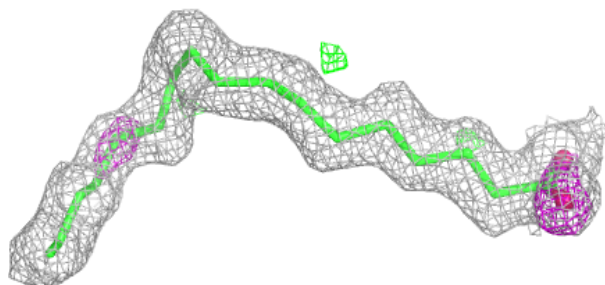
Continued from previous page...

Mol	Type	Chain	Res	Atoms	RSCC	RSR	B-factors(\AA^2)	Q<0.9
6	GOL	B	2648	6/6	0.98	0.09	16,23,25,31	0
2	ZN	A	6004	1/1	0.99	0.03	74,74,74,74	0
2	ZN	B	6010	1/1	0.99	0.03	73,73,73,73	0
4	HXA	A	9136	19/24	0.99	0.04	3,9,13,17	0
4	HXA	B	8136	19/24	0.99	0.02	2,7,10,11	0
6	GOL	B	2649	6/6	0.99	0.04	42,46,46,46	0
2	ZN	A	6013	1/1	1.00	0.05	29,29,29,29	0
2	ZN	B	6009	1/1	1.00	0.08	40,40,40,40	0
2	ZN	A	6003	1/1	1.00	0.08	34,34,34,34	0
2	ZN	B	6014	1/1	1.00	0.04	20,20,20,20	0
2	ZN	B	6015	1/1	1.00	0.06	38,38,38,38	0
2	ZN	B	6016	1/1	1.00	0.08	39,39,39,39	0
3	CL	A	7001	1/1	1.00	0.02	11,11,11,11	0
2	ZN	A	6001	1/1	1.00	0.04	14,14,14,14	0
2	ZN	A	6005	1/1	1.00	0.04	13,13,13,13	0
2	ZN	A	6006	1/1	1.00	0.05	23,23,23,23	0
2	ZN	A	6002	1/1	1.00	0.04	19,19,19,19	0
2	ZN	A	6008	1/1	1.00	0.06	23,23,23,23	0
2	ZN	A	6011	1/1	1.00	0.06	36,36,36,36	0
2	ZN	A	6012	1/1	1.00	0.08	41,41,41,41	0

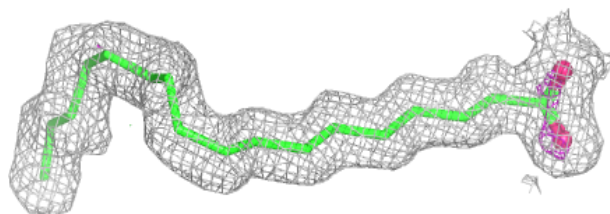
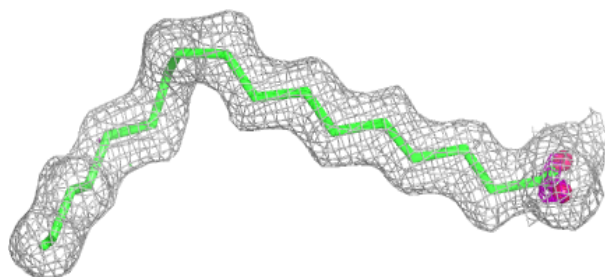
The following is a graphical depiction of the model fit to experimental electron density of all instances of the Ligand of Interest. In addition, ligands with molecular weight > 250 and outliers as shown on the geometry validation Tables will also be included. Each fit is shown from different orientation to approximate a three-dimensional view.

Electron density around HXA A 9136:

$2mF_o-DF_c$ (at 0.7 rmsd) in gray
 mF_o-DF_c (at 3 rmsd) in purple (negative)
and green (positive)

**Electron density around HXA B 8136:**

$2mF_o-DF_c$ (at 0.7 rmsd) in gray
 mF_o-DF_c (at 3 rmsd) in purple (negative)
and green (positive)



6.5 Other polymers [i](#)

There are no such residues in this entry.