



Full wwPDB EM Validation Report ⓘ

Jul 1, 2025 – 02:05 pm BST

PDB ID : 9FXL / pdb_00009fxl
EMDB ID : EMD-50850
Title : TRPC4 in complex with E-AzPico
Authors : Vinayagam, D.; Raunser, S.
Deposited on : 2024-07-01
Resolution : 3.00 Å(reported)
Based on initial model : .

This is a Full wwPDB EM Validation Report for a publicly released PDB entry.

We welcome your comments at validation@mail.wwpdb.org

A user guide is available at

<https://www.wwpdb.org/validation/2017/EMValidationReportHelp>
with specific help available everywhere you see the ⓘ symbol.

The types of validation reports are described at

<http://www.wwpdb.org/validation/2017/FAQs#types>.

The following versions of software and data (see [references ⓘ](#)) were used in the production of this report:

EMDB validation analysis : 0.0.1.dev118
Mogul : 1.8.4, CSD as541be (2020)
MolProbity : 4-5-2 with Phenix2.0rc1
buster-report : 1.1.7 (2018)
Percentile statistics : 20231227.v01 (using entries in the PDB archive December 27th 2023)
MapQ : 1.9.13
Ideal geometry (proteins) : Engh & Huber (2001)
Ideal geometry (DNA, RNA) : Parkinson et al. (1996)
Validation Pipeline (wwPDB-VP) : 2.44

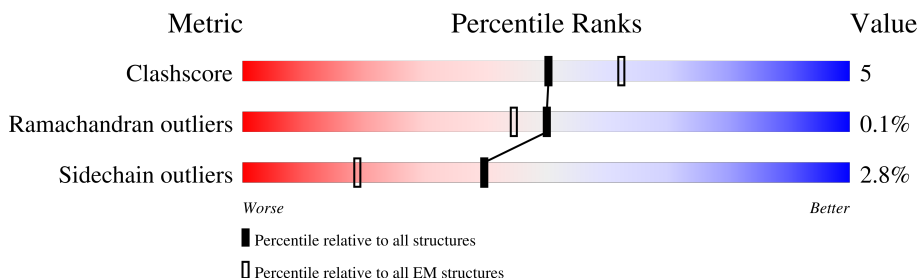
1 Overall quality at a glance

The following experimental techniques were used to determine the structure:

ELECTRON MICROSCOPY

The reported resolution of this entry is 3.00 Å.

Percentile scores (ranging between 0-100) for global validation metrics of the entry are shown in the following graphic. The table shows the number of entries on which the scores are based.



Metric	Whole archive (#Entries)	EM structures (#Entries)
Clashscore	210492	15764
Ramachandran outliers	207382	16835
Sidechain outliers	206894	16415

The table below summarises the geometric issues observed across the polymeric chains and their fit to the map. The red, orange, yellow and green segments of the bar indicate the fraction of residues that contain outliers for ≥ 3 , 2, 1 and 0 types of geometric quality criteria respectively. A grey segment represents the fraction of residues that are not modelled. The numeric value for each fraction is indicated below the corresponding segment, with a dot representing fractions $\leq 5\%$. The upper red bar (where present) indicates the fraction of residues that have poor fit to the EM map (all-atom inclusion $< 40\%$). The numeric value is given above the bar.

Mol	Chain	Length	Quality of chain
1	A	941	
1	B	941	
1	C	941	
1	D	941	

2 Entry composition

There are 2 unique types of molecules in this entry. The entry contains 21272 atoms, of which 0 are hydrogens and 0 are deuteriums.

In the tables below, the AltConf column contains the number of residues with at least one atom in alternate conformation and the Trace column contains the number of residues modelled with at most 2 atoms.

- Molecule 1 is a protein called Transient receptor potential cation channel subfamily c member 4a.

Mol	Chain	Residues	Atoms					AltConf	Trace
1	A	644	Total	C	N	O	S	1	0
			5266	3439	868	932	27		
1	B	645	Total	C	N	O	S	2	0
			5282	3449	870	936	27		
1	C	644	Total	C	N	O	S	2	0
			5274	3445	869	933	27		
1	D	644	Total	C	N	O	S	2	0
			5274	3445	869	933	27		

There are 108 discrepancies between the modelled and reference sequences:

Chain	Residue	Modelled	Actual	Comment	Reference
A	-19	MET	-	initiating methionine	UNP U3N7D8
A	-18	GLY	-	expression tag	UNP U3N7D8
A	-17	HIS	-	expression tag	UNP U3N7D8
A	-16	HIS	-	expression tag	UNP U3N7D8
A	-15	HIS	-	expression tag	UNP U3N7D8
A	-14	HIS	-	expression tag	UNP U3N7D8
A	-13	HIS	-	expression tag	UNP U3N7D8
A	-12	HIS	-	expression tag	UNP U3N7D8
A	-11	HIS	-	expression tag	UNP U3N7D8
A	-10	HIS	-	expression tag	UNP U3N7D8
A	-9	GLY	-	expression tag	UNP U3N7D8
A	-8	GLY	-	expression tag	UNP U3N7D8
A	-7	SER	-	expression tag	UNP U3N7D8
A	-6	GLU	-	expression tag	UNP U3N7D8
A	-5	ASN	-	expression tag	UNP U3N7D8
A	-4	LEU	-	expression tag	UNP U3N7D8
A	-3	TYR	-	expression tag	UNP U3N7D8
A	-2	PHE	-	expression tag	UNP U3N7D8
A	-1	GLN	-	expression tag	UNP U3N7D8
A	0	GLY	-	expression tag	UNP U3N7D8
A	1	GLY	-	expression tag	UNP U3N7D8

Continued on next page...

Continued from previous page...

Chain	Residue	Modelled	Actual	Comment	Reference
A	916	LEU	-	expression tag	UNP U3N7D8
A	917	GLU	-	expression tag	UNP U3N7D8
A	918	VAL	-	expression tag	UNP U3N7D8
A	919	LEU	-	expression tag	UNP U3N7D8
A	920	PHE	-	expression tag	UNP U3N7D8
A	921	GLN	-	expression tag	UNP U3N7D8
B	-19	MET	-	initiating methionine	UNP U3N7D8
B	-18	GLY	-	expression tag	UNP U3N7D8
B	-17	HIS	-	expression tag	UNP U3N7D8
B	-16	HIS	-	expression tag	UNP U3N7D8
B	-15	HIS	-	expression tag	UNP U3N7D8
B	-14	HIS	-	expression tag	UNP U3N7D8
B	-13	HIS	-	expression tag	UNP U3N7D8
B	-12	HIS	-	expression tag	UNP U3N7D8
B	-11	HIS	-	expression tag	UNP U3N7D8
B	-10	HIS	-	expression tag	UNP U3N7D8
B	-9	GLY	-	expression tag	UNP U3N7D8
B	-8	GLY	-	expression tag	UNP U3N7D8
B	-7	SER	-	expression tag	UNP U3N7D8
B	-6	GLU	-	expression tag	UNP U3N7D8
B	-5	ASN	-	expression tag	UNP U3N7D8
B	-4	LEU	-	expression tag	UNP U3N7D8
B	-3	TYR	-	expression tag	UNP U3N7D8
B	-2	PHE	-	expression tag	UNP U3N7D8
B	-1	GLN	-	expression tag	UNP U3N7D8
B	0	GLY	-	expression tag	UNP U3N7D8
B	1	GLY	-	expression tag	UNP U3N7D8
B	916	LEU	-	expression tag	UNP U3N7D8
B	917	GLU	-	expression tag	UNP U3N7D8
B	918	VAL	-	expression tag	UNP U3N7D8
B	919	LEU	-	expression tag	UNP U3N7D8
B	920	PHE	-	expression tag	UNP U3N7D8
B	921	GLN	-	expression tag	UNP U3N7D8
C	-19	MET	-	initiating methionine	UNP U3N7D8
C	-18	GLY	-	expression tag	UNP U3N7D8
C	-17	HIS	-	expression tag	UNP U3N7D8
C	-16	HIS	-	expression tag	UNP U3N7D8
C	-15	HIS	-	expression tag	UNP U3N7D8
C	-14	HIS	-	expression tag	UNP U3N7D8
C	-13	HIS	-	expression tag	UNP U3N7D8
C	-12	HIS	-	expression tag	UNP U3N7D8
C	-11	HIS	-	expression tag	UNP U3N7D8

Continued on next page...

Continued from previous page...

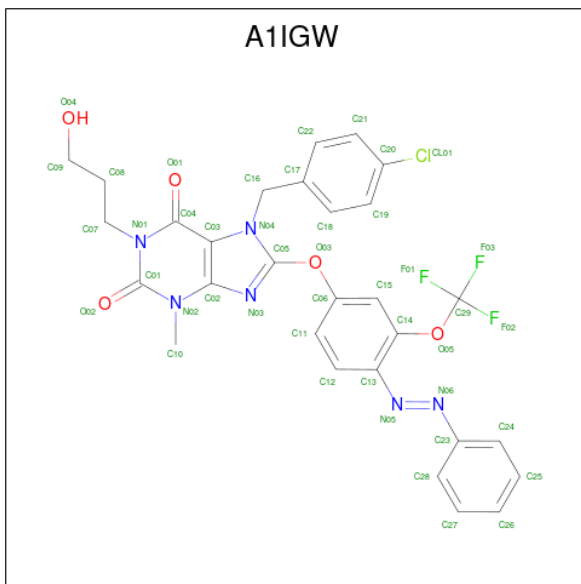
Chain	Residue	Modelled	Actual	Comment	Reference
C	-10	HIS	-	expression tag	UNP U3N7D8
C	-9	GLY	-	expression tag	UNP U3N7D8
C	-8	GLY	-	expression tag	UNP U3N7D8
C	-7	SER	-	expression tag	UNP U3N7D8
C	-6	GLU	-	expression tag	UNP U3N7D8
C	-5	ASN	-	expression tag	UNP U3N7D8
C	-4	LEU	-	expression tag	UNP U3N7D8
C	-3	TYR	-	expression tag	UNP U3N7D8
C	-2	PHE	-	expression tag	UNP U3N7D8
C	-1	GLN	-	expression tag	UNP U3N7D8
C	0	GLY	-	expression tag	UNP U3N7D8
C	1	GLY	-	expression tag	UNP U3N7D8
C	916	LEU	-	expression tag	UNP U3N7D8
C	917	GLU	-	expression tag	UNP U3N7D8
C	918	VAL	-	expression tag	UNP U3N7D8
C	919	LEU	-	expression tag	UNP U3N7D8
C	920	PHE	-	expression tag	UNP U3N7D8
C	921	GLN	-	expression tag	UNP U3N7D8
D	-19	MET	-	initiating methionine	UNP U3N7D8
D	-18	GLY	-	expression tag	UNP U3N7D8
D	-17	HIS	-	expression tag	UNP U3N7D8
D	-16	HIS	-	expression tag	UNP U3N7D8
D	-15	HIS	-	expression tag	UNP U3N7D8
D	-14	HIS	-	expression tag	UNP U3N7D8
D	-13	HIS	-	expression tag	UNP U3N7D8
D	-12	HIS	-	expression tag	UNP U3N7D8
D	-11	HIS	-	expression tag	UNP U3N7D8
D	-10	HIS	-	expression tag	UNP U3N7D8
D	-9	GLY	-	expression tag	UNP U3N7D8
D	-8	GLY	-	expression tag	UNP U3N7D8
D	-7	SER	-	expression tag	UNP U3N7D8
D	-6	GLU	-	expression tag	UNP U3N7D8
D	-5	ASN	-	expression tag	UNP U3N7D8
D	-4	LEU	-	expression tag	UNP U3N7D8
D	-3	TYR	-	expression tag	UNP U3N7D8
D	-2	PHE	-	expression tag	UNP U3N7D8
D	-1	GLN	-	expression tag	UNP U3N7D8
D	0	GLY	-	expression tag	UNP U3N7D8
D	1	GLY	-	expression tag	UNP U3N7D8
D	916	LEU	-	expression tag	UNP U3N7D8
D	917	GLU	-	expression tag	UNP U3N7D8
D	918	VAL	-	expression tag	UNP U3N7D8

Continued on next page...

Continued from previous page...

Chain	Residue	Modelled	Actual	Comment	Reference
D	919	LEU	-	expression tag	UNP U3N7D8
D	920	PHE	-	expression tag	UNP U3N7D8
D	921	GLN	-	expression tag	UNP U3N7D8

- Molecule 2 is (E)-7-(4-chlorobenzyl)-1-(3-hydroxypropyl)-3-methyl-8-(4-(phenyldiazenyl)-3-(trifluoromethoxy)phenoxy)-3,7-dihydro-1H-purine-2,6-dione (CCD ID: A1IGW) (formula: C₂₉H₂₄ClF₃N₆O₅) (labeled as "Ligand of Interest" by depositor).

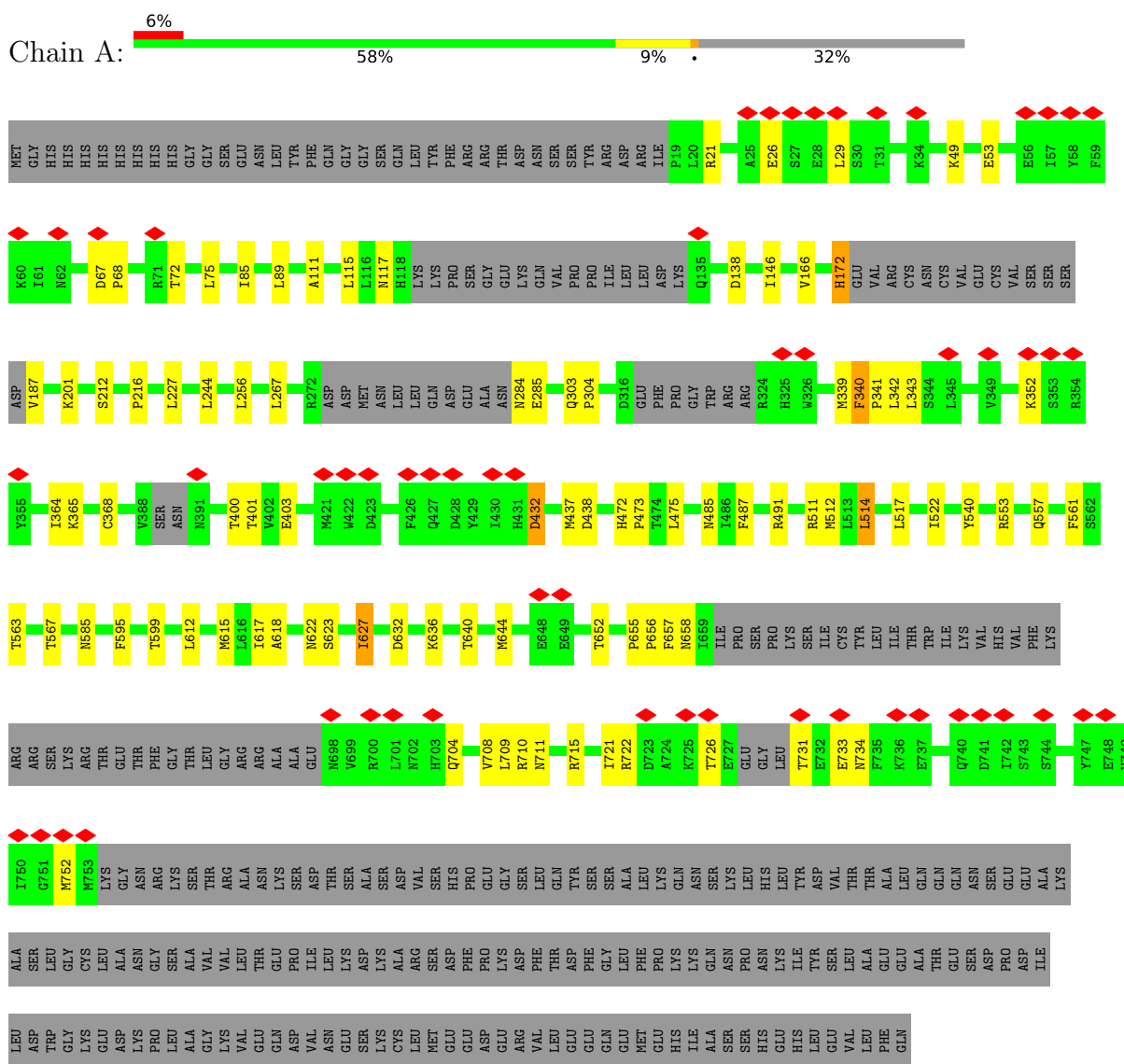


Mol	Chain	Residues	Atoms						AltConf
2	A	1	Total 44	C 29	Cl 1	F 3	N 6	O 5	0
2	B	1	Total 44	C 29	Cl 1	F 3	N 6	O 5	0
2	C	1	Total 44	C 29	Cl 1	F 3	N 6	O 5	0
2	D	1	Total 44	C 29	Cl 1	F 3	N 6	O 5	0

3 Residue-property plots

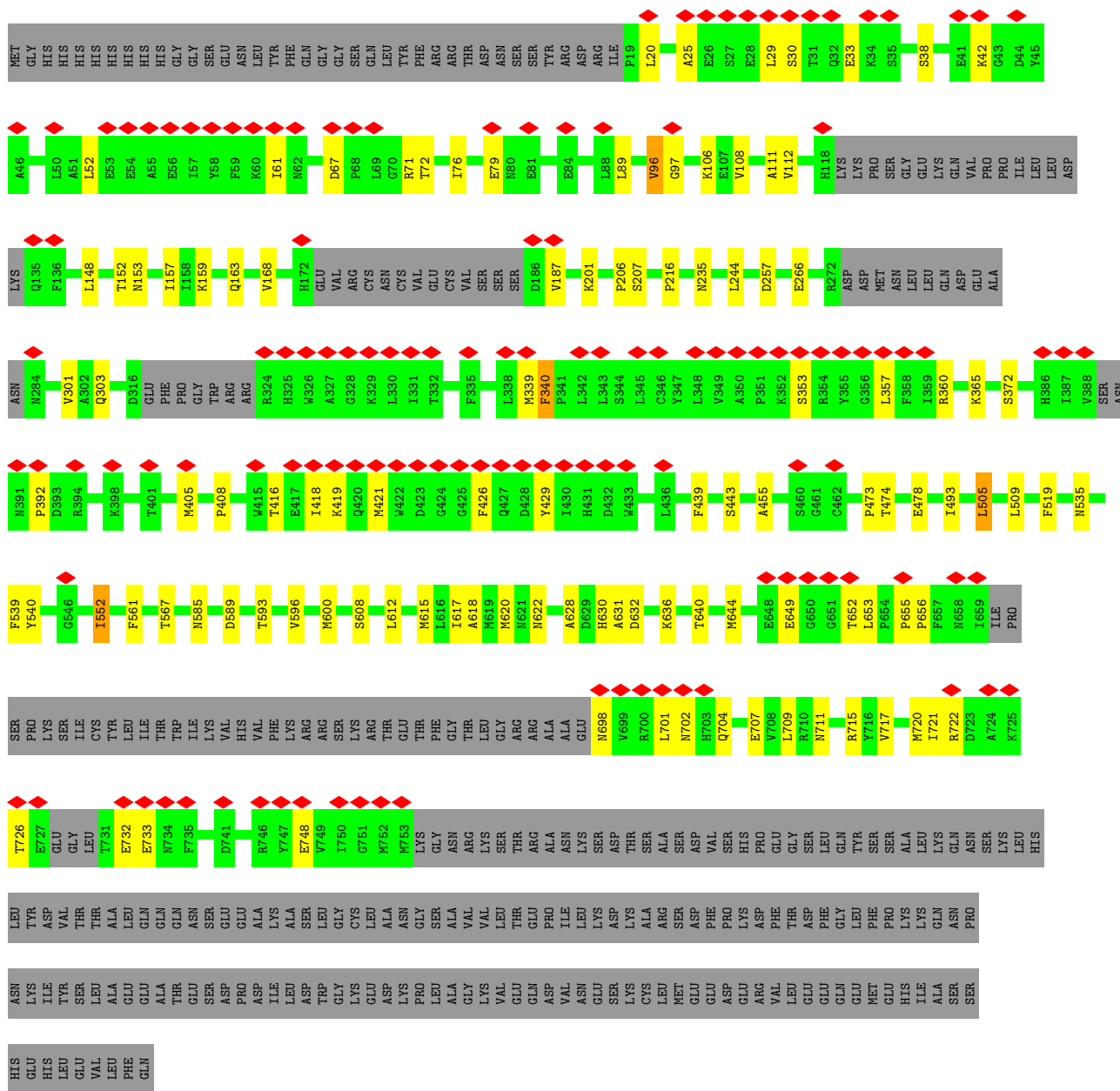
These plots are drawn for all protein, RNA, DNA and oligosaccharide chains in the entry. The first graphic for a chain summarises the proportions of the various outlier classes displayed in the second graphic. The second graphic shows the sequence view annotated by issues in geometry and atom inclusion in map density. Residues are color-coded according to the number of geometric quality criteria for which they contain at least one outlier: green = 0, yellow = 1, orange = 2 and red = 3 or more. A red diamond above a residue indicates a poor fit to the EM map for this residue (all-atom inclusion < 40%). Stretches of 2 or more consecutive residues without any outlier are shown as a green connector. Residues present in the sample, but not in the model, are shown in grey.

- Molecule 1: Transient receptor potential cation channel subfamily c member 4a

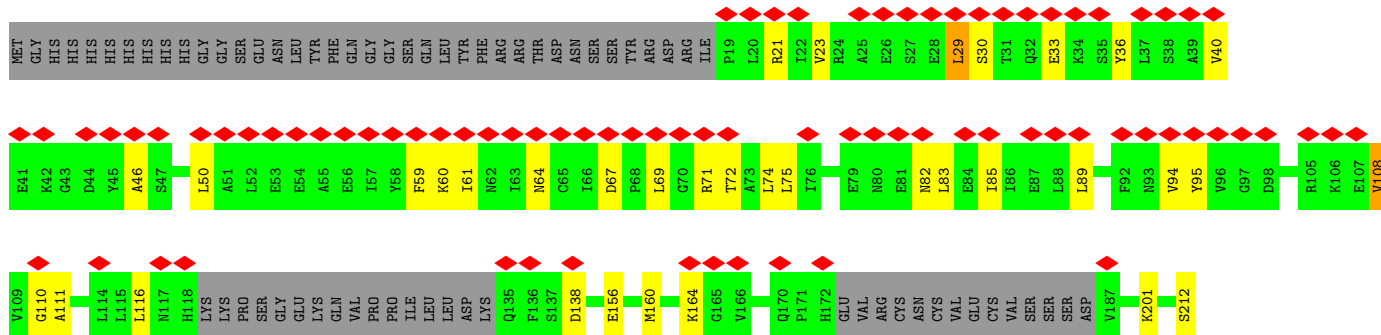


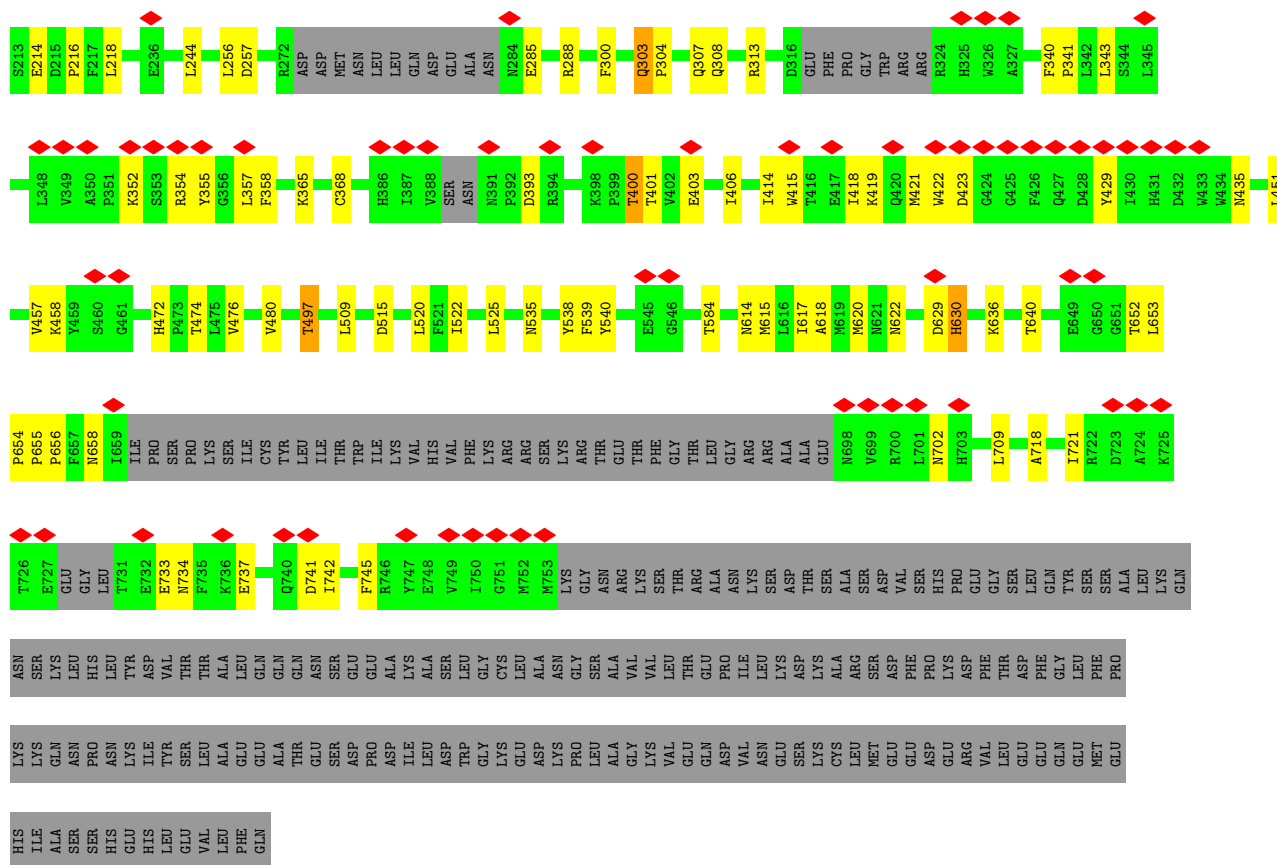
- Molecule 1: Transient receptor potential cation channel subfamily c member 4a



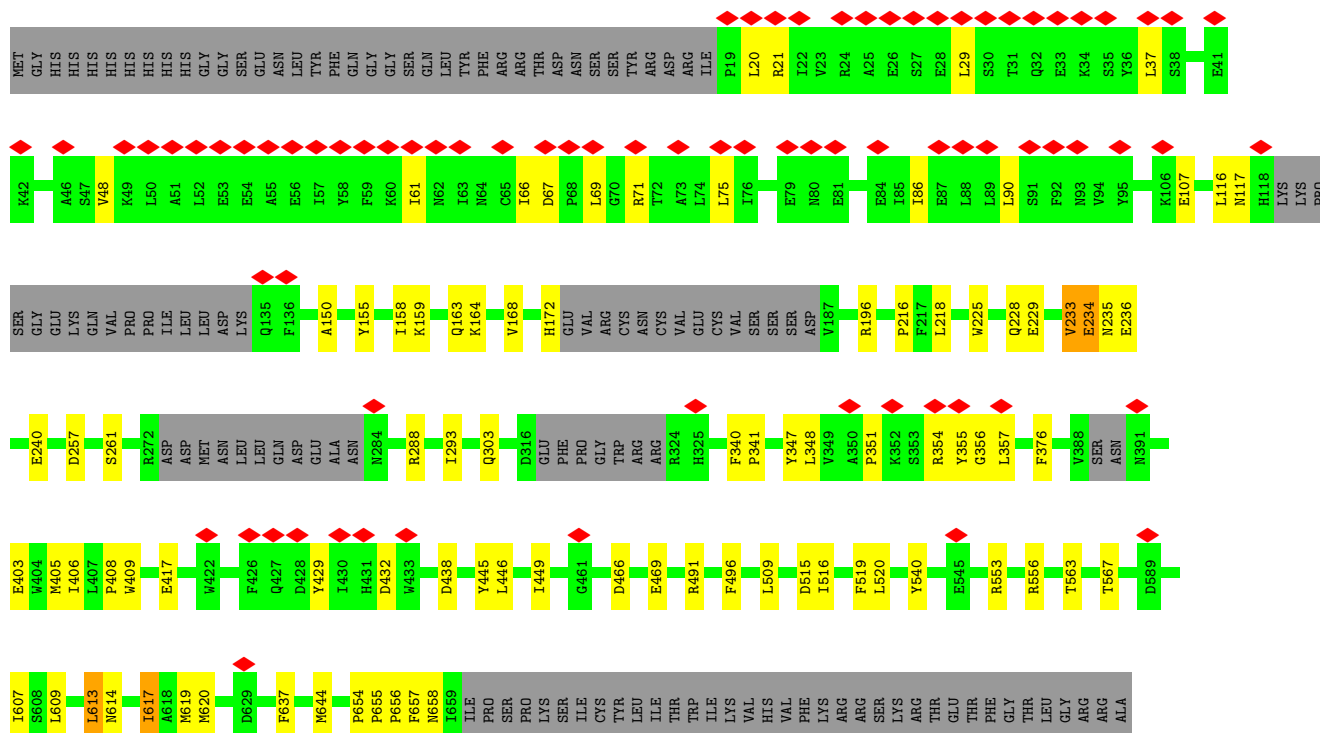


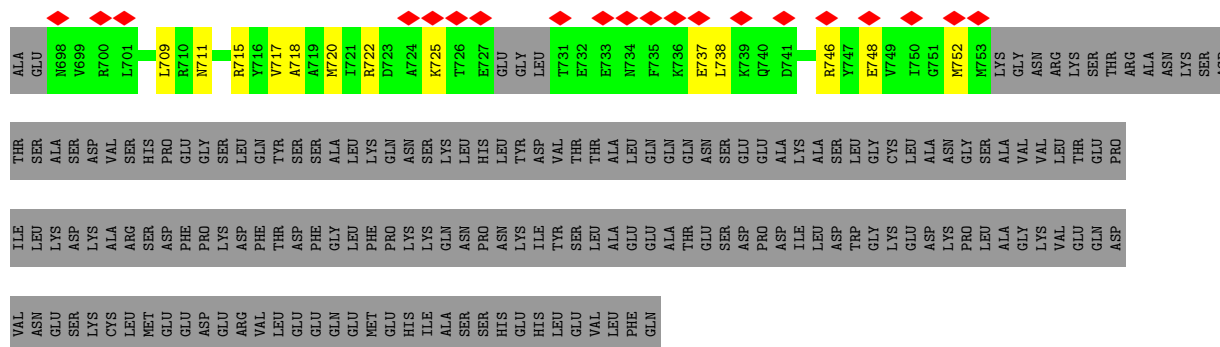
- Molecule 1: Transient receptor potential cation channel subfamily c member 4a





• Molecule 1: Transient receptor potential cation channel subfamily c member 4a





4 Experimental information

Property	Value	Source
EM reconstruction method	SINGLE PARTICLE	Depositor
Imposed symmetry	POINT, C1	Depositor
Number of particles used	139750	Depositor
Resolution determination method	FSC 0.143 CUT-OFF	Depositor
CTF correction method	PHASE FLIPPING AND AMPLITUDE CORRECTION	Depositor
Microscope	FEI TITAN KRIOS	Depositor
Voltage (kV)	300	Depositor
Electron dose ($e^-/\text{\AA}^2$)	53	Depositor
Minimum defocus (nm)	480	Depositor
Maximum defocus (nm)	4400	Depositor
Magnification	105000	Depositor
Image detector	GATAN K3 BIOQUANTUM (6k x 4k)	Depositor
Maximum map value	5.025	Depositor
Minimum map value	-2.841	Depositor
Average map value	0.004	Depositor
Map value standard deviation	0.124	Depositor
Recommended contour level	0.5	Depositor
Map size (Å)	273.0, 273.0, 273.0	wwPDB
Map dimensions	300, 300, 300	wwPDB
Map angles (°)	90.0, 90.0, 90.0	wwPDB
Pixel spacing (Å)	0.91, 0.91, 0.91	Depositor

5 Model quality [i](#)

5.1 Standard geometry [i](#)

Bond lengths and bond angles in the following residue types are not validated in this section: A1IGW

The Z score for a bond length (or angle) is the number of standard deviations the observed value is removed from the expected value. A bond length (or angle) with $|Z| > 5$ is considered an outlier worth inspection. RMSZ is the root-mean-square of all Z scores of the bond lengths (or angles).

Mol	Chain	Bond lengths		Bond angles	
		RMSZ	$\# Z > 5$	RMSZ	$\# Z > 5$
1	A	0.10	0/5391	0.29	0/7300
1	B	0.10	0/5407	0.29	0/7322
1	C	0.10	0/5399	0.27	0/7311
1	D	0.09	0/5399	0.27	0/7311
All	All	0.10	0/21596	0.28	0/29244

There are no bond length outliers.

There are no bond angle outliers.

There are no chirality outliers.

There are no planarity outliers.

5.2 Too-close contacts [i](#)

In the following table, the Non-H and H(model) columns list the number of non-hydrogen atoms and hydrogen atoms in the chain respectively. The H(added) column lists the number of hydrogen atoms added and optimized by MolProbity. The Clashes column lists the number of clashes within the asymmetric unit, whereas Symm-Clashes lists symmetry-related clashes.

Mol	Chain	Non-H	H(model)	H(added)	Clashes	Symm-Clashes
1	A	5266	0	5298	57	0
1	B	5282	0	5312	66	0
1	C	5274	0	5308	69	0
1	D	5274	0	5308	62	0
2	A	44	0	0	0	0
2	B	44	0	0	0	0
2	C	44	0	0	0	0
2	D	44	0	0	0	0
All	All	21272	0	21226	229	0

The all-atom clashscore is defined as the number of clashes found per 1000 atoms (including hydrogen atoms). The all-atom clashscore for this structure is 5.

All (229) close contacts within the same asymmetric unit are listed below, sorted by their clash magnitude.

Atom-1	Atom-2	Interatomic distance (Å)	Clash overlap (Å)
1:D:717:VAL:HA	1:D:720:MET:HG2	1.70	0.74
1:B:153:ASN:HD21	1:B:206:PRO:HD2	1.54	0.72
1:C:29:LEU:HD12	1:C:30:SER:H	1.55	0.69
1:C:216:PRO:HD2	1:C:709:LEU:HD21	1.74	0.68
1:D:657:PHE:O	1:D:658:ASN:ND2	2.26	0.68
1:A:26:GLU:OE1	1:D:159:LYS:NZ	2.27	0.68
1:A:585:ASN:ND2	1:D:553:ARG:O	2.27	0.67
1:B:717:VAL:O	1:B:721:ILE:HG22	1.94	0.67
1:D:29:LEU:HD13	1:D:66:ILE:HG22	1.75	0.67
1:C:85:ILE:O	1:C:89:LEU:HD12	1.95	0.67
1:A:21:ARG:HH21	1:D:168:VAL:HB	1.61	0.66
1:B:216:PRO:HD2	1:B:709:LEU:HD21	1.76	0.66
1:B:618:ALA:O	1:B:622:ASN:ND2	2.27	0.66
1:B:353:SER:HA	1:B:357:LEU:HB2	1.78	0.66
1:C:457:VAL:HG23	1:C:458:LYS:HG3	1.78	0.65
1:C:497:THR:O	1:C:497:THR:OG1	2.15	0.64
1:C:67:ASP:OD1	1:C:71:ARG:N	2.27	0.64
1:A:216:PRO:HD2	1:A:709:LEU:HD21	1.79	0.63
1:C:620:MET:HE1	1:D:614:ASN:HB3	1.81	0.62
1:B:505:LEU:HD21	1:C:522:ILE:HD11	1.82	0.62
1:B:620:MET:HE1	1:C:614:ASN:HB3	1.81	0.62
1:D:216:PRO:HD2	1:D:709:LEU:HD21	1.82	0.61
1:A:522:ILE:HG22	1:D:496:PHE:HE2	1.65	0.61
1:D:172:HIS:O	1:D:196:ARG:NH2	2.35	0.60
1:A:553:ARG:O	1:B:585:ASN:ND2	2.35	0.60
1:C:354:ARG:HD2	1:C:355:TYR:H	1.66	0.60
1:B:596:VAL:O	1:B:600:MET:HG3	2.03	0.59
1:B:698:ASN:O	1:B:702:ASN:ND2	2.31	0.58
1:C:212:SER:O	1:D:21:ARG:NH1	2.37	0.58
1:C:617:ILE:HG21	1:D:617:ILE:HD11	1.86	0.58
1:A:511:ARG:HB2	1:A:627:ILE:HD11	1.85	0.58
1:B:257:ASP:OD1	1:B:303:GLN:NE2	2.36	0.58
1:B:722:ARG:NH2	1:C:138:ASP:OD2	2.37	0.57
1:C:365:LYS:HE2	1:C:652:THR:HG23	1.86	0.57
1:C:74:LEU:HD13	1:C:94:VAL:HG21	1.87	0.56
1:D:257:ASP:OD1	1:D:303:GLN:NE2	2.38	0.56
1:C:72:THR:HB	1:C:75[A]:LEU:HG	1.87	0.56

Continued on next page...

Continued from previous page...

Atom-1	Atom-2	Interatomic distance (Å)	Clash overlap (Å)
1:D:233:VAL:O	1:D:234:GLU:HB2	2.06	0.56
1:C:476:VAL:O	1:C:480:VAL:HG22	2.05	0.55
1:A:726:THR:HA	1:A:733:GLU:HB2	1.88	0.55
1:D:609:LEU:HD23	1:D:613:LEU:HD22	1.89	0.55
1:D:654:PRO:HG2	1:D:657:PHE:HD2	1.73	0.54
1:B:159:LYS:NZ	1:B:163:GLN:OE1	2.40	0.54
1:A:432:ASP:OD1	1:A:432:ASP:N	2.38	0.54
1:A:561:PHE:HD1	1:A:567:THR:HG23	1.73	0.54
1:B:426:PHE:HA	1:B:429:TYR:HD2	1.72	0.54
1:B:153:ASN:OD1	1:B:207:SER:OG	2.26	0.53
1:D:376:PHE:HE1	1:D:406:ILE:HG23	1.74	0.53
1:C:308:GLN:HB2	1:D:236:GLU:HG3	1.90	0.53
1:D:351:PRO:HA	1:D:356:GLY:HA3	1.89	0.53
1:A:632:ASP:OD2	1:A:636:LYS:NZ	2.42	0.53
1:C:116:LEU:HD13	1:C:164:LYS:HE3	1.91	0.53
1:D:438:ASP:OD2	1:D:491:ARG:NH1	2.41	0.53
1:A:512:MET:HE3	1:B:615:MET:HB2	1.92	0.52
1:B:33:GLU:HG2	1:B:61:ILE:HG23	1.90	0.52
1:B:632:ASP:OD2	1:B:636:LYS:NZ	2.34	0.52
1:B:52:LEU:HD21	1:B:89:LEU:HD23	1.91	0.52
1:C:655:PRO:HA	1:C:658:ASN:HB2	1.92	0.52
1:A:212:SER:O	1:A:212:SER:OG	2.19	0.52
1:A:339:MET:HB2	1:A:342:LEU:HB3	1.90	0.51
1:A:618:ALA:O	1:A:622:ASN:ND2	2.35	0.51
1:A:636:LYS:O	1:A:640:THR:HG23	2.09	0.51
1:A:21:ARG:NH1	1:A:21:ARG:HB3	2.25	0.51
1:B:148:LEU:O	1:B:152:THR:HG23	2.09	0.51
1:C:72:THR:H	1:C:75[A]:LEU:HD12	1.74	0.51
1:D:417:GLU:OE1	1:D:429:TYR:OH	2.27	0.51
1:A:472:HIS:ND1	1:A:473:PRO:HD2	2.26	0.51
1:A:438:ASP:OD2	1:A:491:ARG:NH1	2.44	0.51
1:A:734:ASN:ND2	1:B:732:GLU:OE2	2.44	0.51
1:B:493:ILE:HD11	1:C:522:ILE:HG23	1.93	0.50
1:D:748:GLU:O	1:D:752:MET:HG3	2.11	0.50
1:D:515:ASP:OD1	1:D:619:MET:HE3	2.11	0.50
1:C:303:GLN:HG2	1:C:304:PRO:HD2	1.92	0.50
1:A:172:HIS:ND1	1:A:172:HIS:C	2.70	0.50
1:B:79:GLU:HA	1:B:106:LYS:HE2	1.92	0.50
1:A:400:THR:OG1	1:A:401:THR:N	2.45	0.50
1:D:563:THR:O	1:D:567:THR:OG1	2.22	0.50
1:C:636:LYS:O	1:C:640:THR:HG23	2.12	0.49

Continued on next page...

Continued from previous page...

Atom-1	Atom-2	Interatomic distance (Å)	Clash overlap (Å)
1:A:303:GLN:HG2	1:A:304:PRO:HD2	1.94	0.49
1:B:704:GLN:O	1:B:707:GLU:HG3	2.12	0.49
1:C:415:TRP:O	1:C:419:LYS:HG3	2.13	0.49
1:A:138:ASP:OD1	1:A:138:ASP:N	2.40	0.49
1:B:108:VAL:HG12	1:B:111:ALA:H	1.77	0.49
1:D:86:ILE:O	1:D:90:LEU:HG	2.13	0.49
1:D:607:ILE:O	1:D:607:ILE:HG13	2.13	0.48
1:C:33:GLU:HG2	1:C:61:ILE:HG23	1.94	0.48
1:A:365:LYS:HE2	1:A:652:THR:HG23	1.95	0.48
1:B:474:THR:O	1:B:478:GLU:HG2	2.14	0.48
1:C:741:ASP:OD1	1:C:742:ILE:N	2.46	0.47
1:A:655:PRO:N	1:A:656:PRO:HD2	2.29	0.47
1:A:437:MET:HE2	1:A:487:PHE:HD1	1.79	0.47
1:C:629:ASP:OD1	1:C:630:HIS:N	2.48	0.47
1:B:509:LEU:HG	1:C:615:MET:HE1	1.97	0.47
1:A:227:LEU:HD13	1:A:244:LEU:HB3	1.97	0.47
1:A:472:HIS:HB3	1:A:475:LEU:HB2	1.96	0.47
1:C:618:ALA:O	1:C:622:ASN:ND2	2.31	0.47
1:C:352:LYS:HB2	1:C:354:ARG:NH1	2.29	0.47
1:C:400:THR:OG1	1:C:401:THR:N	2.45	0.47
1:C:509:LEU:HD11	1:D:519:PHE:HE1	1.79	0.47
1:C:653:LEU:HD23	1:C:653:LEU:HA	1.79	0.47
1:D:225:TRP:NE1	1:D:229:GLU:OE2	2.48	0.47
1:C:285:GLU:OE2	1:C:313:ARG:NH2	2.47	0.47
1:D:340:PHE:CD2	1:D:341:PRO:HD3	2.50	0.47
1:B:365:LYS:HE2	1:B:652:THR:HG23	1.96	0.47
1:B:717:VAL:HA	1:B:720:MET:HG2	1.97	0.46
1:B:340:PHE:CE1	1:B:372:SER:HB2	2.51	0.46
1:C:82:ASN:HB3	1:C:85:ILE:HD11	1.97	0.46
1:A:704:GLN:O	1:A:708:VAL:HG12	2.16	0.46
1:C:156:GLU:O	1:C:160:MET:HG3	2.15	0.46
1:B:201:LYS:HA	1:B:244:LEU:HD21	1.97	0.46
1:B:726:THR:HA	1:B:733:GLU:HB3	1.96	0.46
1:C:60:LYS:HD3	1:C:60:LYS:N	2.29	0.46
1:B:168:VAL:HG12	1:C:21:ARG:HE	1.81	0.46
1:B:360:ARG:HH22	1:B:649:GLU:HB2	1.79	0.46
1:B:698:ASN:HB3	1:B:701:LEU:HB2	1.96	0.46
1:C:340:PHE:CD2	1:C:341:PRO:HD3	2.50	0.46
1:D:347:TYR:O	1:D:351:PRO:HG3	2.15	0.46
1:C:535:ASN:O	1:C:539:PHE:HB3	2.15	0.46
1:A:146:ILE:HD13	1:A:166:VAL:HG21	1.98	0.46

Continued on next page...

Continued from previous page...

Atom-1	Atom-2	Interatomic distance (Å)	Clash overlap (Å)
1:D:340:PHE:CG	1:D:341:PRO:HD3	2.51	0.46
1:D:466:ASP:N	1:D:466:ASP:OD1	2.48	0.46
1:B:721:ILE:HD11	1:C:69:LEU:HD23	1.98	0.45
1:D:116:LEU:HB3	1:D:164:LYS:HE3	1.97	0.45
1:A:339:MET:HE2	1:A:339:MET:HB3	1.73	0.45
1:A:256:LEU:HD23	1:A:303:GLN:OE1	2.16	0.45
1:A:721:ILE:HD11	1:A:722:ARG:NH1	2.31	0.45
1:B:112:VAL:HG21	1:B:157:ILE:HD13	1.99	0.45
1:B:519:PHE:HZ	1:B:615:MET:HG3	1.81	0.45
1:D:655:PRO:N	1:D:656:PRO:HD2	2.32	0.45
1:B:552:ILE:H	1:B:552:ILE:HG13	1.63	0.45
1:A:72:THR:HB	1:A:75[A]:LEU:HG	1.99	0.45
1:D:446:LEU:HD23	1:D:446:LEU:HA	1.85	0.45
1:A:284:ASN:HB3	1:A:285:GLU:H	1.61	0.45
1:A:615:MET:SD	1:D:509:LEU:HG	2.57	0.45
1:B:655:PRO:N	1:B:656:PRO:HD2	2.32	0.45
1:B:711:ASN:O	1:B:715:ARG:HG3	2.17	0.44
1:D:354:ARG:HG3	1:D:355:TYR:CD2	2.52	0.44
1:C:538:TYR:OH	1:C:584:THR:O	2.29	0.44
1:A:26:GLU:OE2	1:D:155:TYR:OH	2.34	0.44
1:D:67:ASP:HB2	1:D:71:ARG:O	2.17	0.44
1:A:111:ALA:O	1:A:115:LEU:HD12	2.17	0.44
1:C:472:HIS:ND1	1:C:474:THR:HG22	2.32	0.44
1:A:711:ASN:O	1:A:715:ARG:HG2	2.18	0.44
1:A:721:ILE:HD11	1:A:722:ARG:HH11	1.82	0.44
1:B:615:MET:HE2	1:B:615:MET:HB3	1.81	0.44
1:A:49:LYS:O	1:A:53:GLU:HG2	2.17	0.44
1:D:348:LEU:HD23	1:D:348:LEU:HA	1.83	0.44
1:B:493:ILE:HD12	1:C:525:LEU:HD23	1.99	0.43
1:C:108:VAL:HG22	1:C:111:ALA:H	1.83	0.43
1:D:107:GLU:OE2	1:D:107:GLU:HA	2.17	0.43
1:C:655:PRO:N	1:C:656:PRO:HD2	2.34	0.43
1:A:340:PHE:CD2	1:A:341:PRO:HD3	2.53	0.43
1:B:653:LEU:HD23	1:B:653:LEU:HA	1.79	0.43
1:D:61:ILE:HD12	1:D:61:ILE:HA	1.87	0.43
1:B:421:MET:HE1	1:B:426:PHE:HB3	2.00	0.43
1:B:535:ASN:O	1:B:539:PHE:HB3	2.19	0.43
1:C:64:ASN:ND2	1:C:95:TYR:H	2.17	0.43
1:C:403:GLU:HA	1:C:406:ILE:HB	2.00	0.43
1:D:218:LEU:HG	1:D:288:ARG:HH12	1.83	0.43
1:B:29:LEU:HD23	1:B:30:SER:N	2.33	0.43

Continued on next page...

Continued from previous page...

Atom-1	Atom-2	Interatomic distance (Å)	Clash overlap (Å)
1:B:38:SER:O	1:B:42:LYS:HG2	2.19	0.43
1:B:339:MET:H	1:B:339:MET:HG2	1.71	0.43
1:D:711:ASN:O	1:D:715:ARG:HG3	2.18	0.43
1:C:46:ALA:O	1:C:50:LEU:HG	2.19	0.43
1:A:85:ILE:O	1:A:89:LEU:HG	2.18	0.43
1:B:67:ASP:OD2	1:B:67:ASP:C	2.62	0.43
1:C:718:ALA:O	1:C:721:ILE:HG13	2.19	0.43
1:D:71:ARG:HA	1:D:75[A]:LEU:HD12	2.00	0.43
1:B:561:PHE:HD1	1:B:567:THR:HG23	1.84	0.42
1:B:405:MET:O	1:B:408:PRO:HD2	2.19	0.42
1:C:515:ASP:N	1:C:515:ASP:OD1	2.52	0.42
1:C:414:ILE:O	1:C:418:ILE:HG13	2.19	0.42
1:A:343:LEU:HD11	1:A:368:CYS:SG	2.59	0.42
1:B:33:GLU:H	1:B:33:GLU:HG3	1.67	0.42
1:B:96:VAL:HG23	1:B:97:GLY:H	1.83	0.42
1:B:439:PHE:O	1:B:443:SER:OG	2.35	0.42
1:C:745:PHE:CD1	1:D:746:ARG:HG3	2.54	0.42
1:D:720:MET:HE3	1:D:720:MET:HB2	1.94	0.42
1:A:352:LYS:HD3	1:A:352:LYS:HA	1.54	0.42
1:C:59:PHE:C	1:C:61:ILE:H	2.27	0.42
1:A:514:LEU:HD13	1:A:517:LEU:HD12	2.02	0.42
1:C:422:TRP:HD1	1:C:423:ASP:N	2.17	0.42
1:D:293:ILE:HG12	1:D:637:PHE:CE1	2.54	0.42
1:D:405:MET:O	1:D:408:PRO:HD2	2.20	0.42
1:D:516:ILE:HD11	1:D:620:MET:HE3	2.01	0.42
1:A:644:MET:HE2	1:A:644:MET:HB3	1.74	0.41
1:A:658:ASN:OD1	1:A:658:ASN:C	2.63	0.41
1:C:257:ASP:OD2	1:C:303:GLN:NE2	2.54	0.41
1:D:469:GLU:H	1:D:469:GLU:HG3	1.67	0.41
1:C:343:LEU:HD11	1:C:368:CYS:SG	2.60	0.41
1:C:354:ARG:HD2	1:C:355:TYR:N	2.34	0.41
1:D:725:LYS:HB3	1:D:725:LYS:HE2	1.80	0.41
1:A:29:LEU:HD22	1:A:68:PRO:HD3	2.02	0.41
1:B:301:VAL:HG11	1:B:640:THR:HG21	2.02	0.41
1:D:429:TYR:CD1	1:D:429:TYR:C	2.98	0.41
1:D:432:ASP:OD1	1:D:432:ASP:N	2.39	0.41
1:B:644:MET:HE2	1:B:644:MET:HB3	1.97	0.41
1:D:293:ILE:HD12	1:D:644:MET:HE1	2.03	0.41
1:D:718:ALA:O	1:D:722:ARG:HG3	2.20	0.41
1:B:71:ARG:HE	1:B:76:ILE:HG12	1.85	0.41
1:B:455:ALA:HB2	1:B:473:PRO:HB2	2.02	0.41

Continued on next page...

Continued from previous page...

Atom-1	Atom-2	Interatomic distance (Å)	Clash overlap (Å)
1:C:36:TYR:O	1:C:40:VAL:HG13	2.20	0.41
1:C:256:LEU:HD22	1:C:300:PHE:CE2	2.56	0.41
1:D:737:GLU:HG3	1:D:738:LEU:N	2.36	0.41
1:A:67:ASP:OD1	1:A:68:PRO:HD2	2.20	0.41
1:A:710:ARG:HD3	1:B:25:ALA:HB1	2.03	0.41
1:B:72:THR:O	1:B:76:ILE:N	2.51	0.41
1:B:608:SER:HA	1:B:612:LEU:HB2	2.02	0.41
1:C:357:LEU:HD23	1:C:357:LEU:HA	1.92	0.41
1:C:509:LEU:HD21	1:D:519:PHE:CZ	2.56	0.41
1:D:409:TRP:NE1	1:D:656:PRO:HD3	2.36	0.41
1:B:628:ALA:HA	1:B:631:ALA:HB2	2.02	0.41
1:C:218:LEU:HD13	1:C:288:ARG:HH12	1.85	0.41
1:A:201:LYS:HB2	1:A:201:LYS:HE2	1.89	0.40
1:A:612:LEU:HA	1:A:612:LEU:HD12	1.77	0.40
1:B:266:GLU:OE2	1:B:266:GLU:C	2.64	0.40
1:B:418:ILE:HD13	1:B:418:ILE:HA	1.96	0.40
1:C:429:TYR:O	1:C:435:ASN:ND2	2.52	0.40
1:D:293:ILE:HG12	1:D:637:PHE:HE1	1.85	0.40
1:A:485:ASN:OD1	1:A:485:ASN:C	2.65	0.40
1:B:416:THR:HA	1:B:419:LYS:HG2	2.03	0.40
1:C:83:LEU:HD11	1:C:110:GLY:HA3	2.02	0.40
1:D:445:TYR:O	1:D:449:ILE:HG13	2.20	0.40
1:C:654:PRO:HB2	1:C:656:PRO:HD2	2.04	0.40
1:A:595:PHE:O	1:A:599:THR:OG1	2.35	0.40
1:C:201:LYS:HA	1:C:244:LEU:HD21	2.03	0.40
1:C:734:ASN:HA	1:C:737:GLU:OE1	2.22	0.40
1:A:563:THR:O	1:A:567:THR:OG1	2.29	0.40
1:D:150:ALA:HA	1:D:158:ILE:HD11	2.04	0.40

There are no symmetry-related clashes.

5.3 Torsion angles [i](#)

5.3.1 Protein backbone [i](#)

In the following table, the Percentiles column shows the percent Ramachandran outliers of the chain as a percentile score with respect to all PDB entries followed by that with respect to all EM entries.

The Analysed column shows the number of residues for which the backbone conformation was analysed, and the total number of residues.

Mol	Chain	Analysed	Favoured	Allowed	Outliers	Percentiles	
1	A	629/941 (67%)	603 (96%)	26 (4%)	0	100	100
1	B	631/941 (67%)	607 (96%)	22 (4%)	2 (0%)	37	70
1	C	630/941 (67%)	608 (96%)	22 (4%)	0	100	100
1	D	630/941 (67%)	595 (94%)	34 (5%)	1 (0%)	44	77
All	All	2520/3764 (67%)	2413 (96%)	104 (4%)	3 (0%)	50	81

All (3) Ramachandran outliers are listed below:

Mol	Chain	Res	Type
1	B	392	PRO
1	D	234	GLU
1	B	187	VAL

5.3.2 Protein sidechains ⓘ

In the following table, the Percentiles column shows the percent sidechain outliers of the chain as a percentile score with respect to all PDB entries followed by that with respect to all EM entries.

The Analysed column shows the number of residues for which the sidechain conformation was analysed, and the total number of residues.

Mol	Chain	Analysed	Rotameric	Outliers	Percentiles	
1	A	576/839 (69%)	559 (97%)	17 (3%)	36	69
1	B	578/839 (69%)	566 (98%)	12 (2%)	48	77
1	C	577/839 (69%)	559 (97%)	18 (3%)	35	68
1	D	577/839 (69%)	558 (97%)	19 (3%)	33	67
All	All	2308/3356 (69%)	2242 (97%)	66 (3%)	40	70

All (66) residues with a non-rotameric sidechain are listed below:

Mol	Chain	Res	Type
1	A	117	ASN
1	A	172	HIS
1	A	187	VAL
1	A	267	LEU
1	A	340	PHE
1	A	364	ILE
1	A	403	GLU
1	A	432	ASP

Continued on next page...

Continued from previous page...

Mol	Chain	Res	Type
1	A	514	LEU
1	A	540	TYR
1	A	557	GLN
1	A	617	ILE
1	A	623	SER
1	A	627	ILE
1	A	657	PHE
1	A	731	THR
1	A	752	MET
1	B	20	LEU
1	B	96	VAL
1	B	235	ASN
1	B	340	PHE
1	B	505	LEU
1	B	540	TYR
1	B	552	ILE
1	B	589	ASP
1	B	593	THR
1	B	617	ILE
1	B	630	HIS
1	B	748	GLU
1	C	23	VAL
1	C	29	LEU
1	C	108	VAL
1	C	214	GLU
1	C	303	GLN
1	C	307	GLN
1	C	358	PHE
1	C	393	ASP
1	C	400	THR
1	C	421	MET
1	C	451	LEU
1	C	497	THR
1	C	520[A]	LEU
1	C	520[B]	LEU
1	C	540	TYR
1	C	630	HIS
1	C	702	ASN
1	C	733	GLU
1	D	20	LEU
1	D	37	LEU
1	D	48	VAL

Continued on next page...

Continued from previous page...

Mol	Chain	Res	Type
1	D	69	LEU
1	D	117	ASN
1	D	163	GLN
1	D	228	GLN
1	D	233	VAL
1	D	235	ASN
1	D	240	GLU
1	D	261	SER
1	D	357	LEU
1	D	403	GLU
1	D	520[A]	LEU
1	D	520[B]	LEU
1	D	540	TYR
1	D	556	ARG
1	D	613	LEU
1	D	617	ILE

Sometimes sidechains can be flipped to improve hydrogen bonding and reduce clashes. All (22) such sidechains are listed below:

Mol	Chain	Res	Type
1	A	82	ASN
1	A	284	ASN
1	A	395	GLN
1	A	621	ASN
1	A	702	ASN
1	B	235	ASN
1	B	284	ASN
1	B	307	GLN
1	B	435	ASN
1	C	82	ASN
1	C	153	ASN
1	C	501	HIS
1	C	532	ASN
1	C	605	ASN
1	C	621	ASN
1	D	247	GLN
1	D	297	GLN
1	D	431	HIS
1	D	536	GLN
1	D	558	ASN
1	D	559	ASN
1	D	621	ASN

5.3.3 RNA ⓘ

There are no RNA molecules in this entry.

5.4 Non-standard residues in protein, DNA, RNA chains ⓘ

There are no non-standard protein/DNA/RNA residues in this entry.

5.5 Carbohydrates ⓘ

There are no oligosaccharides in this entry.

5.6 Ligand geometry ⓘ

4 ligands are modelled in this entry.

In the following table, the Counts columns list the number of bonds (or angles) for which Mogul statistics could be retrieved, the number of bonds (or angles) that are observed in the model and the number of bonds (or angles) that are defined in the Chemical Component Dictionary. The Link column lists molecule types, if any, to which the group is linked. The Z score for a bond length (or angle) is the number of standard deviations the observed value is removed from the expected value. A bond length (or angle) with $|Z| > 2$ is considered an outlier worth inspection. RMSZ is the root-mean-square of all Z scores of the bond lengths (or angles).

Mol	Type	Chain	Res	Link	Bond lengths			Bond angles		
					Counts	RMSZ	# Z > 2	Counts	RMSZ	# Z > 2
2	A1IGW	B	1001	-	44,48,48	2.05	5 (11%)	52,69,69	1.55	8 (15%)
2	A1IGW	C	1001	-	44,48,48	2.07	5 (11%)	52,69,69	1.53	8 (15%)
2	A1IGW	D	1001	-	44,48,48	2.07	5 (11%)	52,69,69	1.55	8 (15%)
2	A1IGW	A	1001	-	44,48,48	2.07	6 (13%)	52,69,69	1.53	7 (13%)

In the following table, the Chirals column lists the number of chiral outliers, the number of chiral centers analysed, the number of these observed in the model and the number defined in the Chemical Component Dictionary. Similar counts are reported in the Torsion and Rings columns. '-' means no outliers of that kind were identified.

Mol	Type	Chain	Res	Link	Chirals	Torsions	Rings
2	A1IGW	B	1001	-	-	6/20/22/22	0/5/5/5
2	A1IGW	C	1001	-	-	4/20/22/22	0/5/5/5
2	A1IGW	D	1001	-	-	2/20/22/22	0/5/5/5
2	A1IGW	A	1001	-	-	4/20/22/22	0/5/5/5

All (21) bond length outliers are listed below:

Mol	Chain	Res	Type	Atoms	Z	Observed(Å)	Ideal(Å)
2	C	1001	A1IGW	C02-N02	9.24	1.49	1.38
2	A	1001	A1IGW	C02-N02	9.22	1.49	1.38
2	D	1001	A1IGW	C02-N02	9.20	1.49	1.38
2	B	1001	A1IGW	C02-N02	9.10	1.49	1.38
2	C	1001	A1IGW	C01-N02	7.05	1.46	1.38
2	A	1001	A1IGW	C01-N02	7.04	1.46	1.38
2	D	1001	A1IGW	C01-N02	7.03	1.46	1.38
2	B	1001	A1IGW	C01-N02	6.89	1.46	1.38
2	B	1001	A1IGW	C03-C04	3.92	1.54	1.46
2	C	1001	A1IGW	C03-C04	3.90	1.54	1.46
2	D	1001	A1IGW	C03-C04	3.89	1.54	1.46
2	A	1001	A1IGW	C03-C04	3.87	1.54	1.46
2	C	1001	A1IGW	C01-N01	3.12	1.44	1.38
2	A	1001	A1IGW	C01-N01	3.12	1.44	1.38
2	D	1001	A1IGW	C01-N01	3.10	1.44	1.38
2	B	1001	A1IGW	C01-N01	3.09	1.44	1.38
2	C	1001	A1IGW	O02-C01	-2.08	1.18	1.22
2	A	1001	A1IGW	O02-C01	-2.07	1.18	1.22
2	D	1001	A1IGW	O02-C01	-2.06	1.18	1.22
2	B	1001	A1IGW	O02-C01	-2.02	1.18	1.22
2	A	1001	A1IGW	C20-CL01	2.01	1.78	1.74

All (31) bond angle outliers are listed below:

Mol	Chain	Res	Type	Atoms	Z	Observed(°)	Ideal(°)
2	C	1001	A1IGW	C03-C04-N01	7.76	119.94	113.58
2	A	1001	A1IGW	C03-C04-N01	7.75	119.93	113.58
2	D	1001	A1IGW	C03-C04-N01	7.70	119.89	113.58
2	B	1001	A1IGW	C03-C04-N01	7.67	119.86	113.58
2	D	1001	A1IGW	C13-N05-N06	3.27	122.11	114.56
2	D	1001	A1IGW	O01-C04-C03	-3.14	120.16	125.33
2	B	1001	A1IGW	O01-C04-C03	-3.11	120.21	125.33
2	A	1001	A1IGW	O01-C04-C03	-2.97	120.45	125.33
2	C	1001	A1IGW	O01-C04-C03	-2.95	120.48	125.33
2	B	1001	A1IGW	C13-N05-N06	2.85	121.14	114.56
2	A	1001	A1IGW	C13-N05-N06	2.75	120.90	114.56
2	C	1001	A1IGW	O02-C01-N02	-2.63	119.79	122.08
2	B	1001	A1IGW	O02-C01-N02	-2.55	119.86	122.08
2	A	1001	A1IGW	O02-C01-N02	-2.53	119.88	122.08
2	C	1001	A1IGW	N01-C01-N02	2.51	120.31	116.75
2	D	1001	A1IGW	N01-C01-N02	2.50	120.28	116.75
2	D	1001	A1IGW	O02-C01-N02	-2.48	119.92	122.08

Continued on next page...

Continued from previous page...

Mol	Chain	Res	Type	Atoms	Z	Observed(°)	Ideal(°)
2	A	1001	A1IGW	N01-C01-N02	2.46	120.22	116.75
2	B	1001	A1IGW	N01-C01-N02	2.45	120.22	116.75
2	D	1001	A1IGW	C10-N02-C01	2.44	119.92	117.35
2	B	1001	A1IGW	C10-N02-C01	2.42	119.90	117.35
2	B	1001	A1IGW	C07-N01-C04	2.40	120.98	117.58
2	D	1001	A1IGW	C07-N01-C04	2.36	120.93	117.58
2	C	1001	A1IGW	C13-N05-N06	2.34	119.97	114.56
2	A	1001	A1IGW	C10-N02-C01	2.32	119.79	117.35
2	C	1001	A1IGW	C10-N02-C01	2.32	119.79	117.35
2	B	1001	A1IGW	C02-N02-C01	-2.22	120.08	122.20
2	C	1001	A1IGW	C02-N02-C01	-2.18	120.12	122.20
2	A	1001	A1IGW	C02-N02-C01	-2.12	120.17	122.20
2	D	1001	A1IGW	C02-N02-C01	-2.11	120.18	122.20
2	C	1001	A1IGW	C07-N01-C04	2.01	120.42	117.58

There are no chirality outliers.

All (16) torsion outliers are listed below:

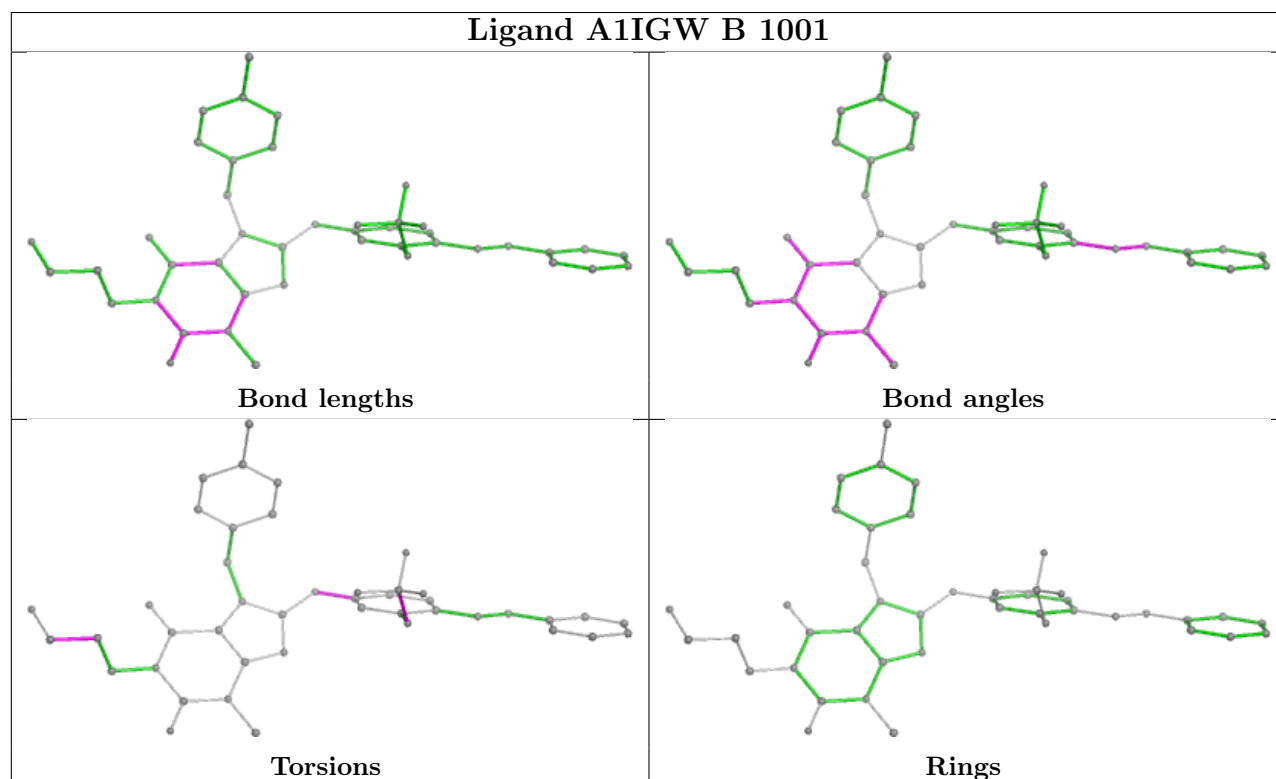
Mol	Chain	Res	Type	Atoms
2	A	1001	A1IGW	F03-C29-O05-C14
2	B	1001	A1IGW	C07-C08-C09-O04
2	A	1001	A1IGW	F01-C29-O05-C14
2	A	1001	A1IGW	C07-C08-C09-O04
2	C	1001	A1IGW	C07-C08-C09-O04
2	B	1001	A1IGW	F02-C29-O05-C14
2	A	1001	A1IGW	F02-C29-O05-C14
2	B	1001	A1IGW	C15-C06-O03-C05
2	C	1001	A1IGW	F03-C29-O05-C14
2	B	1001	A1IGW	F01-C29-O05-C14
2	B	1001	A1IGW	F03-C29-O05-C14
2	B	1001	A1IGW	C11-C06-O03-C05
2	D	1001	A1IGW	C07-C08-C09-O04
2	C	1001	A1IGW	F01-C29-O05-C14
2	C	1001	A1IGW	F02-C29-O05-C14
2	D	1001	A1IGW	F03-C29-O05-C14

There are no ring outliers.

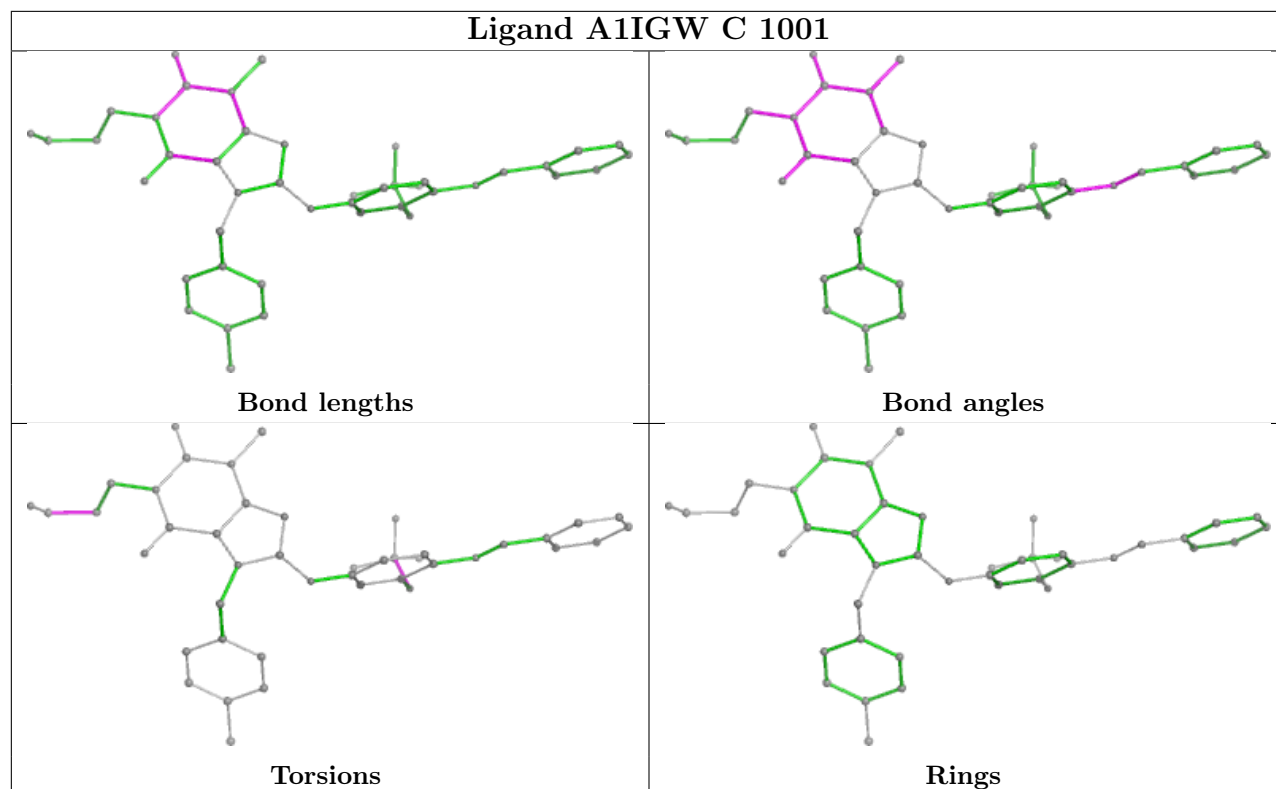
No monomer is involved in short contacts.

The following is a two-dimensional graphical depiction of Mogul quality analysis of bond lengths, bond angles, torsion angles, and ring geometry for all instances of the Ligand of Interest. In addition, ligands with molecular weight > 250 and outliers as shown on the validation Tables will

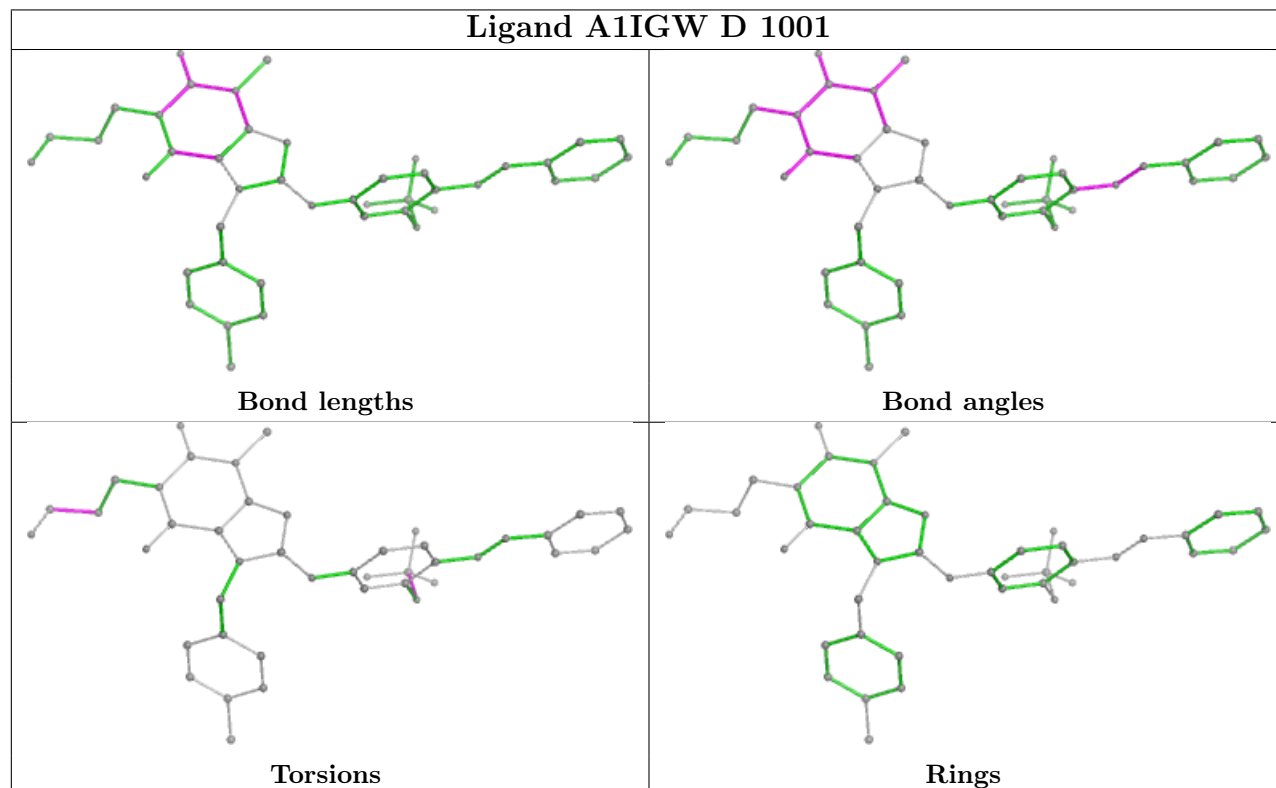
also be included. For torsion angles, if less than 5% of the Mogul distribution of torsion angles is within 10 degrees of the torsion angle in question, then that torsion angle is considered an outlier. Any bond that is central to one or more torsion angles identified as an outlier by Mogul will be highlighted in the graph. For rings, the root-mean-square deviation (RMSD) between the ring in question and similar rings identified by Mogul is calculated over all ring torsion angles. If the average RMSD is greater than 60 degrees and the minimal RMSD between the ring in question and any Mogul-identified rings is also greater than 60 degrees, then that ring is considered an outlier. The outliers are highlighted in purple. The color gray indicates Mogul did not find sufficient equivalents in the CSD to analyse the geometry.

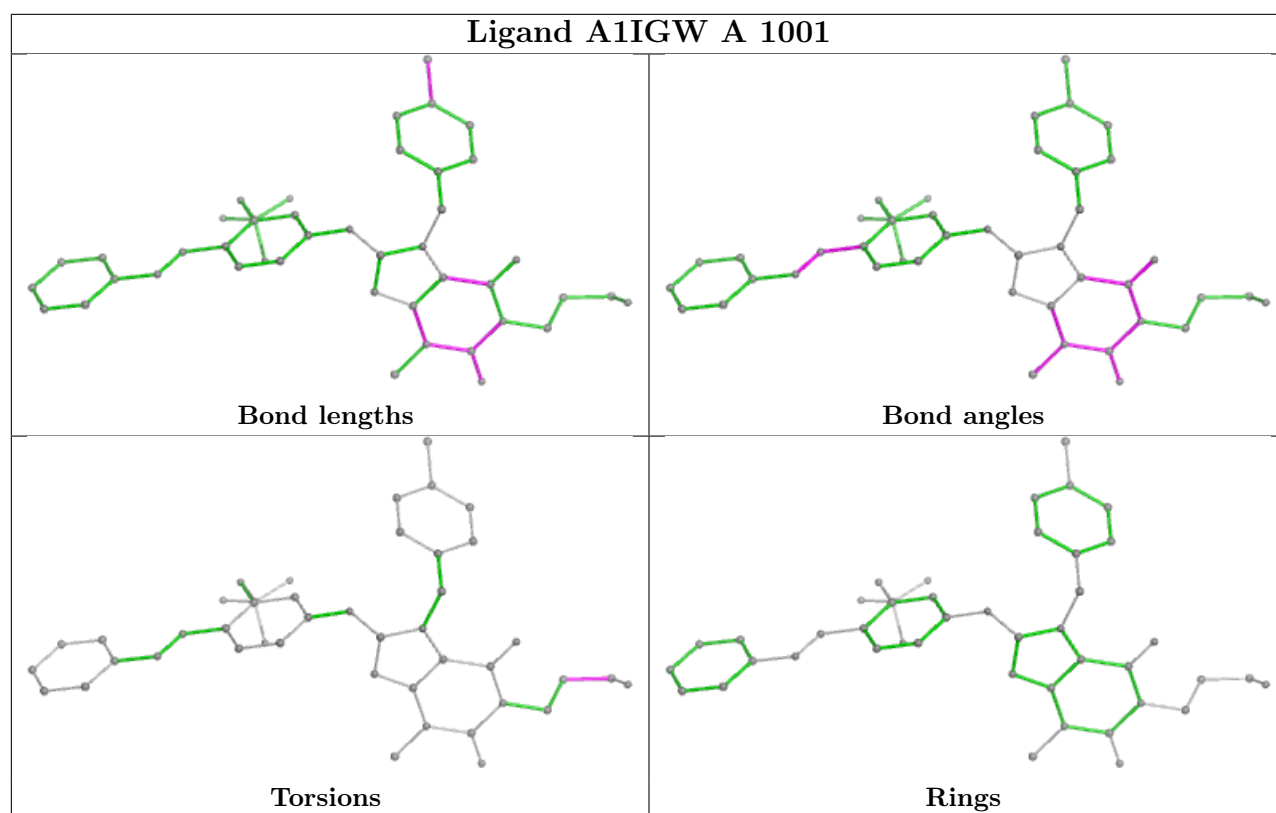


Ligand A1IGW C 1001



Ligand A1IGW D 1001





5.7 Other polymers [i](#)

There are no such residues in this entry.

5.8 Polymer linkage issues [i](#)

There are no chain breaks in this entry.

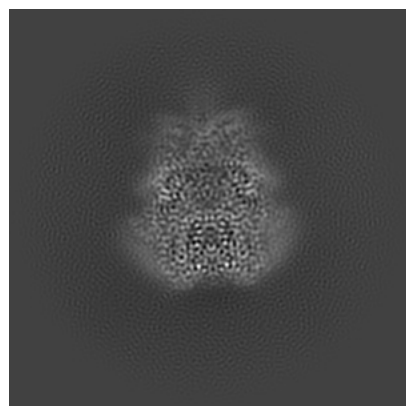
6 Map visualisation [i](#)

This section contains visualisations of the EMDB entry EMD-50850. These allow visual inspection of the internal detail of the map and identification of artifacts.

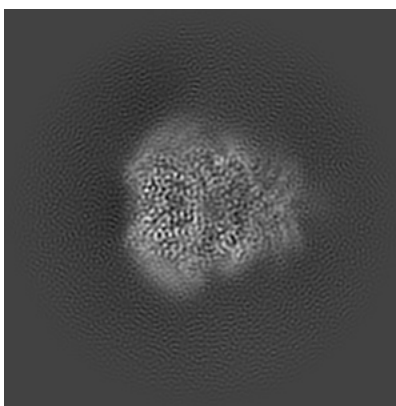
Images derived from a raw map, generated by summing the deposited half-maps, are presented below the corresponding image components of the primary map to allow further visual inspection and comparison with those of the primary map.

6.1 Orthogonal projections [i](#)

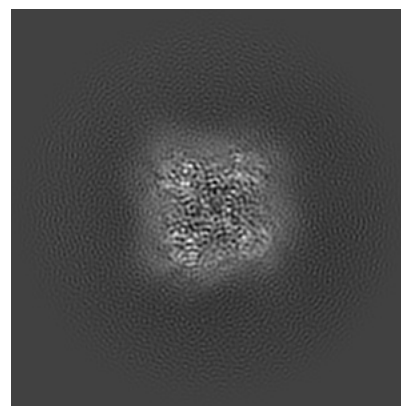
6.1.1 Primary map



X

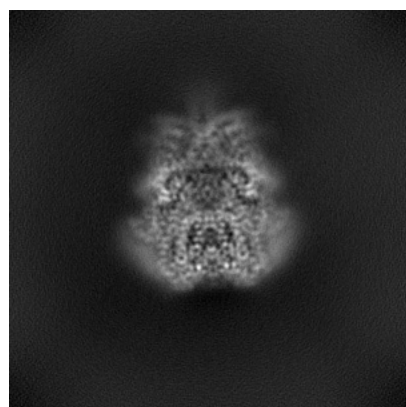


Y

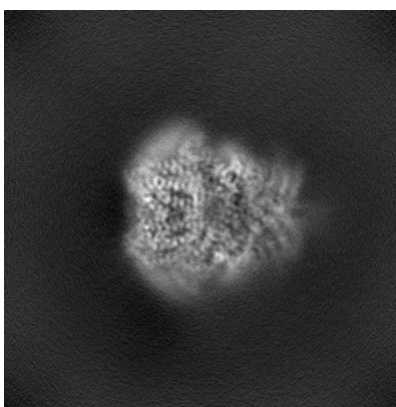


Z

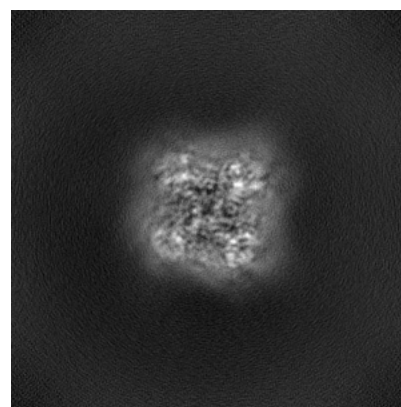
6.1.2 Raw map



X



Y

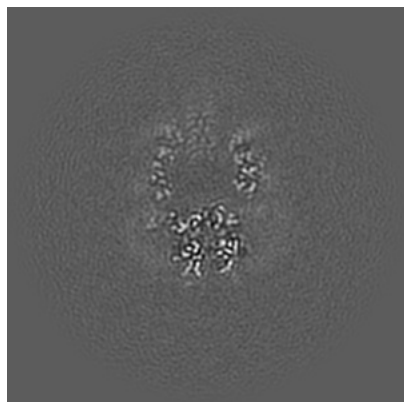


Z

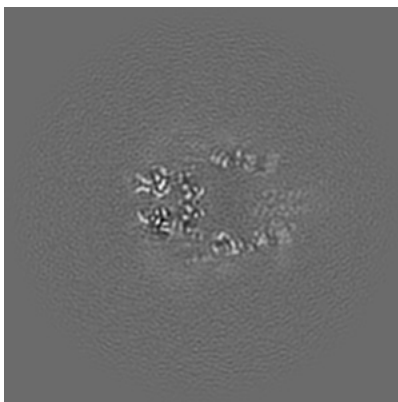
The images above show the map projected in three orthogonal directions.

6.2 Central slices [i](#)

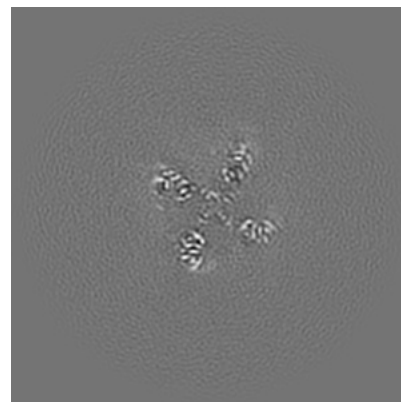
6.2.1 Primary map



X Index: 150

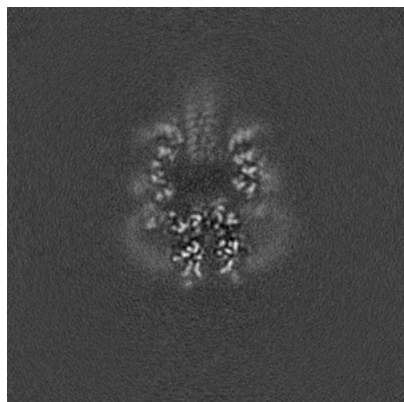


Y Index: 150

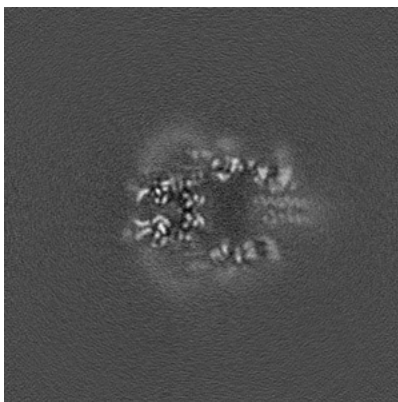


Z Index: 150

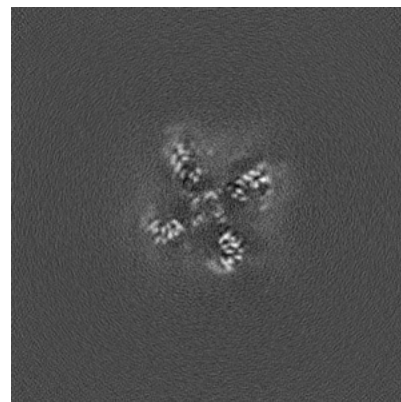
6.2.2 Raw map



X Index: 150



Y Index: 150

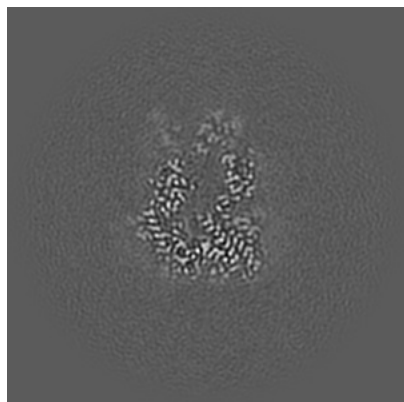


Z Index: 150

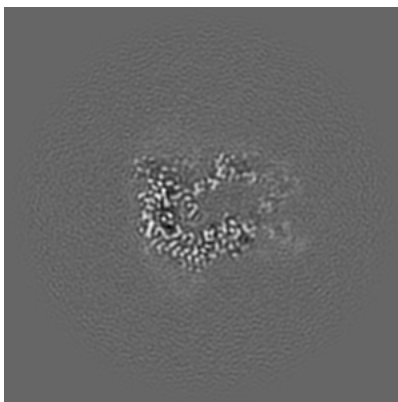
The images above show central slices of the map in three orthogonal directions.

6.3 Largest variance slices [i](#)

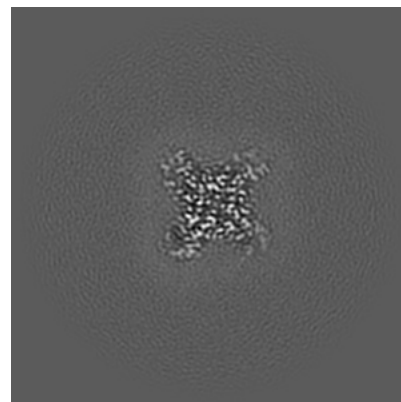
6.3.1 Primary map



X Index: 133

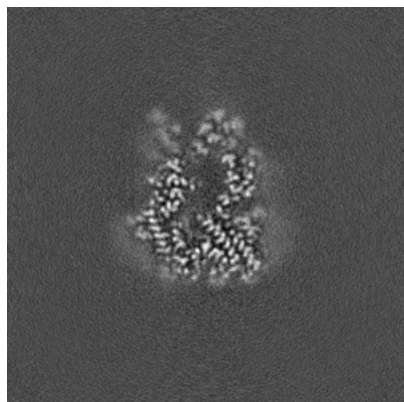


Y Index: 168

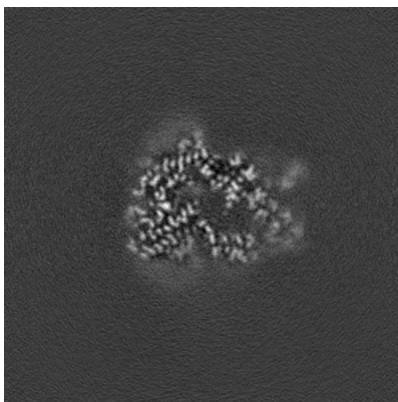


Z Index: 117

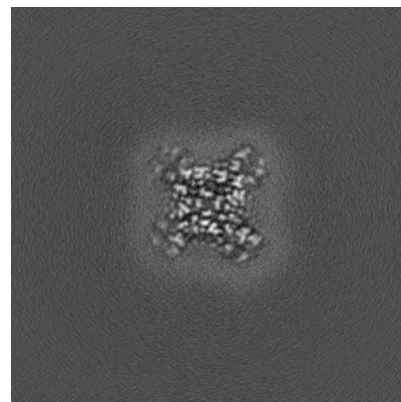
6.3.2 Raw map



X Index: 167



Y Index: 171

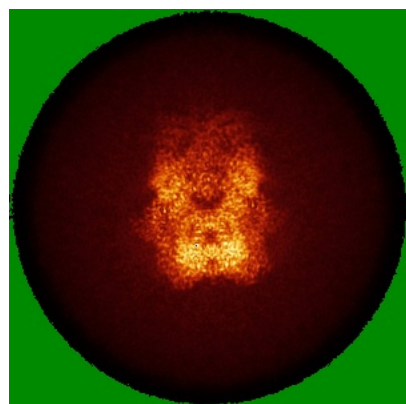


Z Index: 114

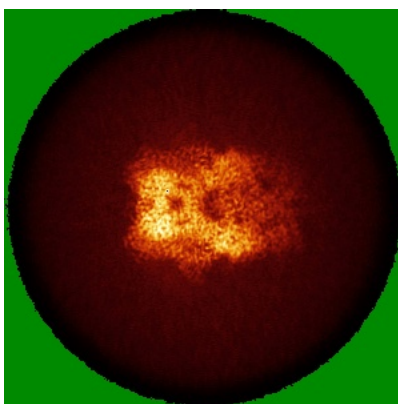
The images above show the largest variance slices of the map in three orthogonal directions.

6.4 Orthogonal standard-deviation projections (False-color) [i](#)

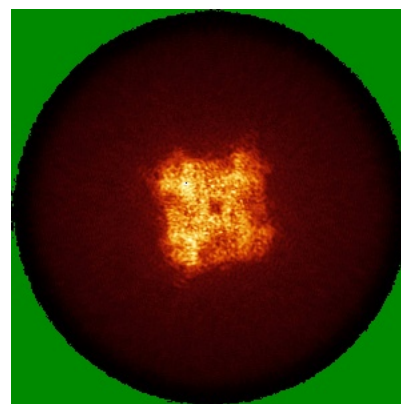
6.4.1 Primary map



X

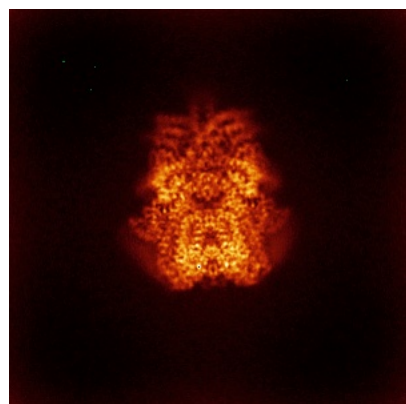


Y

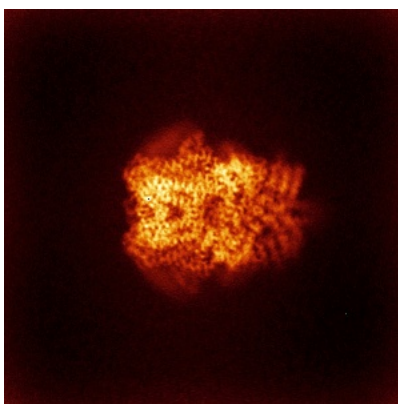


Z

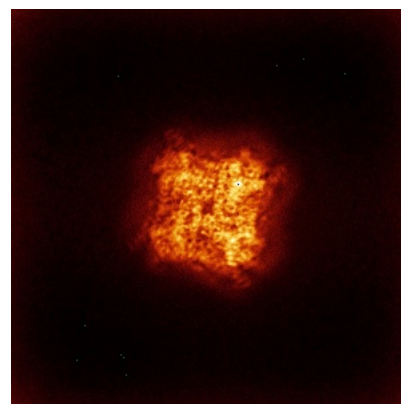
6.4.2 Raw map



X



Y

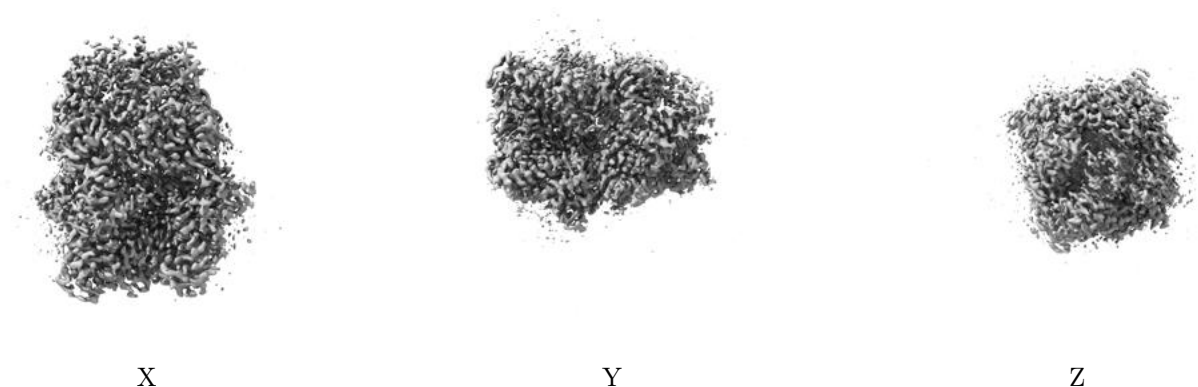


Z

The images above show the map standard deviation projections with false color in three orthogonal directions. Minimum values are shown in green, max in blue, and dark to light orange shades represent small to large values respectively.

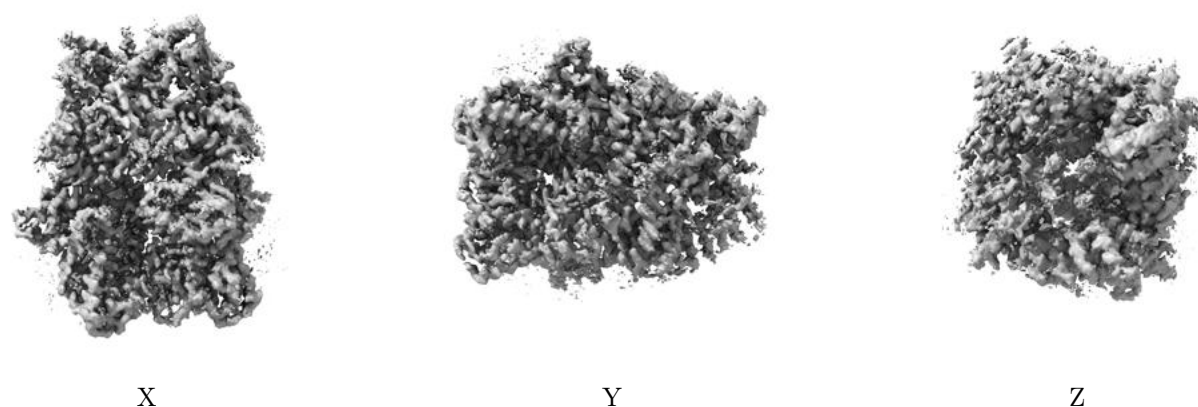
6.5 Orthogonal surface views [i](#)

6.5.1 Primary map



The images above show the 3D surface view of the map at the recommended contour level 0.5. These images, in conjunction with the slice images, may facilitate assessment of whether an appropriate contour level has been provided.

6.5.2 Raw map



These images show the 3D surface of the raw map. The raw map's contour level was selected so that its surface encloses the same volume as the primary map does at its recommended contour level.

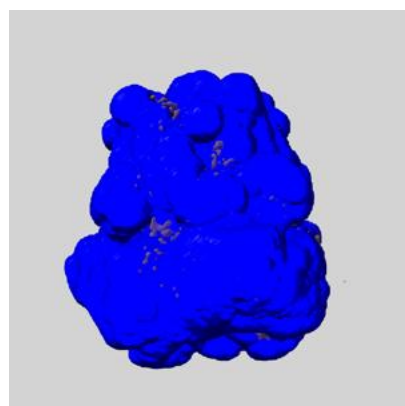
6.6 Mask visualisation [i](#)

This section shows the 3D surface view of the primary map at 50% transparency overlaid with the specified mask at 0% transparency

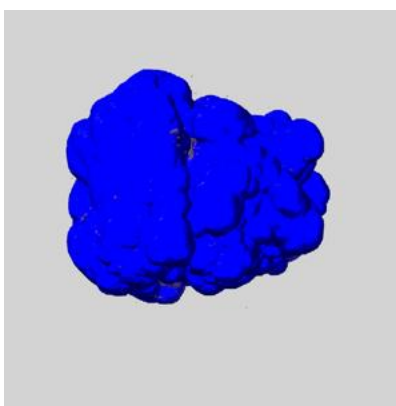
A mask typically either:

- Encompasses the whole structure
- Separates out a domain, a functional unit, a monomer or an area of interest from a larger structure

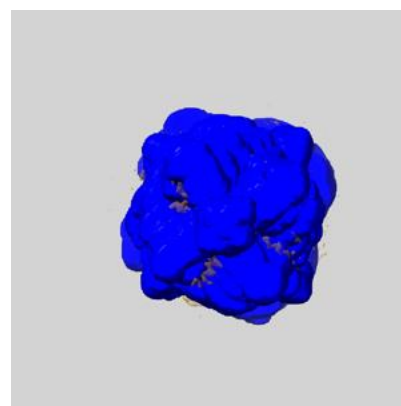
6.6.1 emd_50850_msk_1.map [i](#)



X



Y

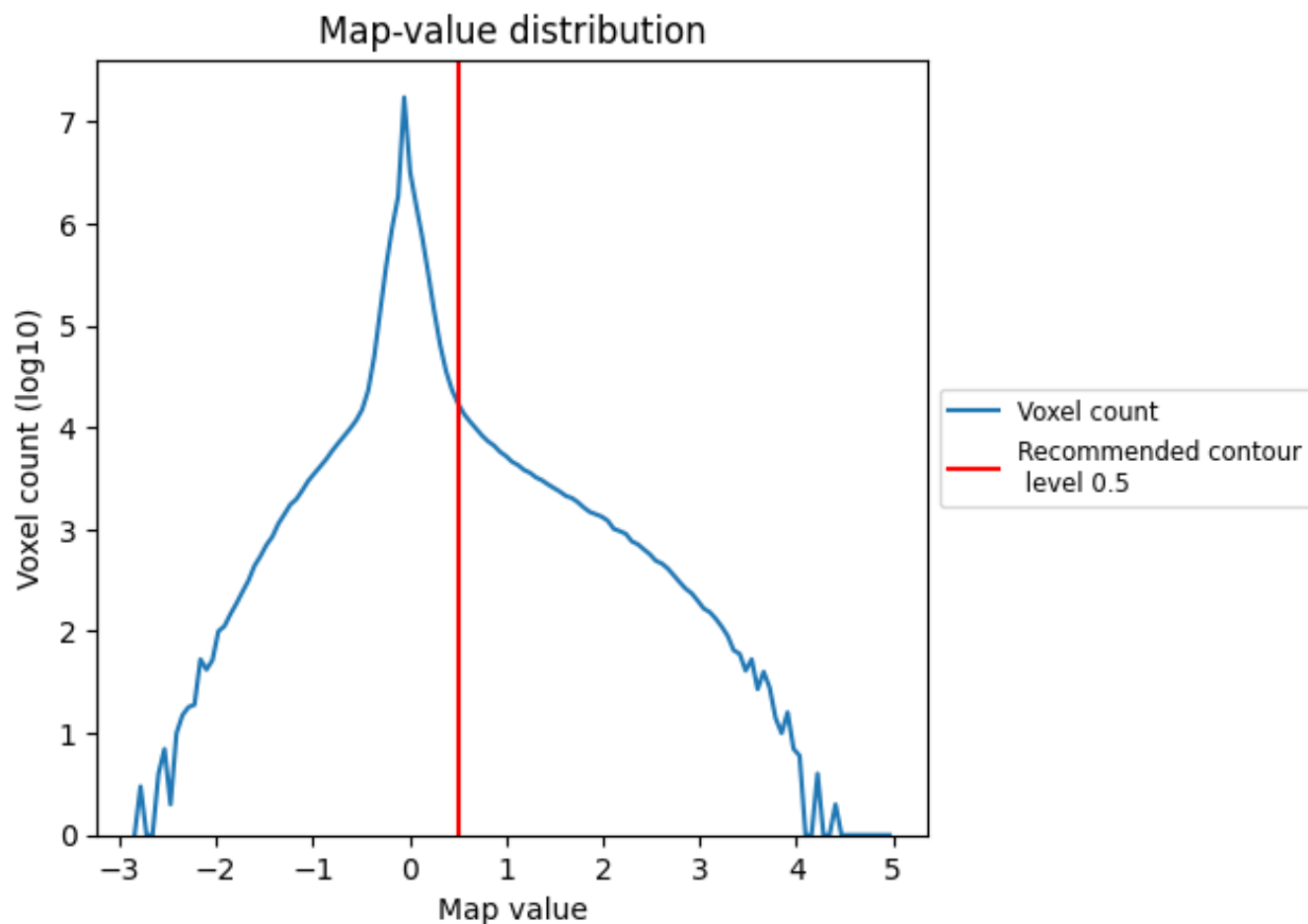


Z

7 Map analysis [i](#)

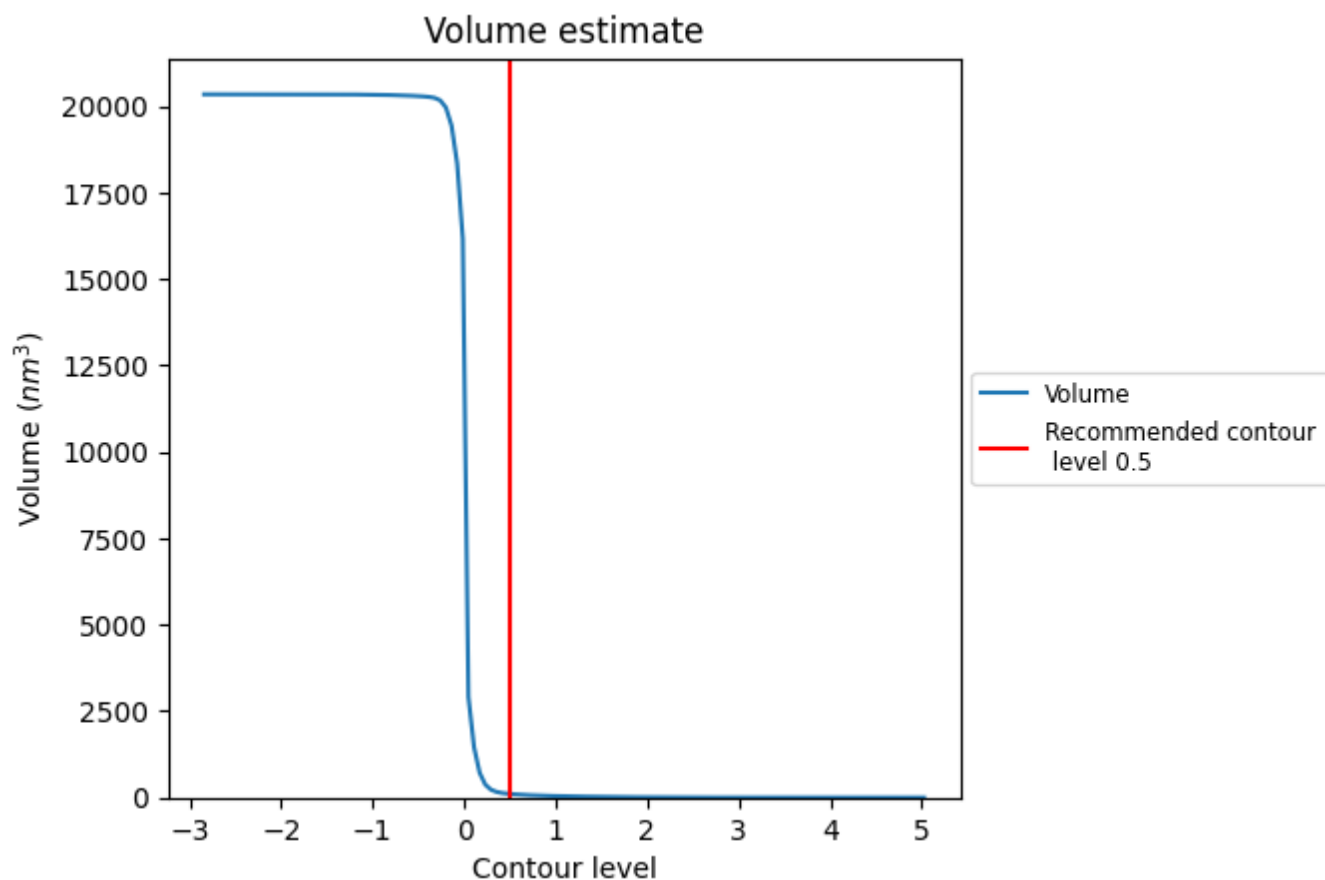
This section contains the results of statistical analysis of the map.

7.1 Map-value distribution [i](#)



The map-value distribution is plotted in 128 intervals along the x-axis. The y-axis is logarithmic. A spike in this graph at zero usually indicates that the volume has been masked.

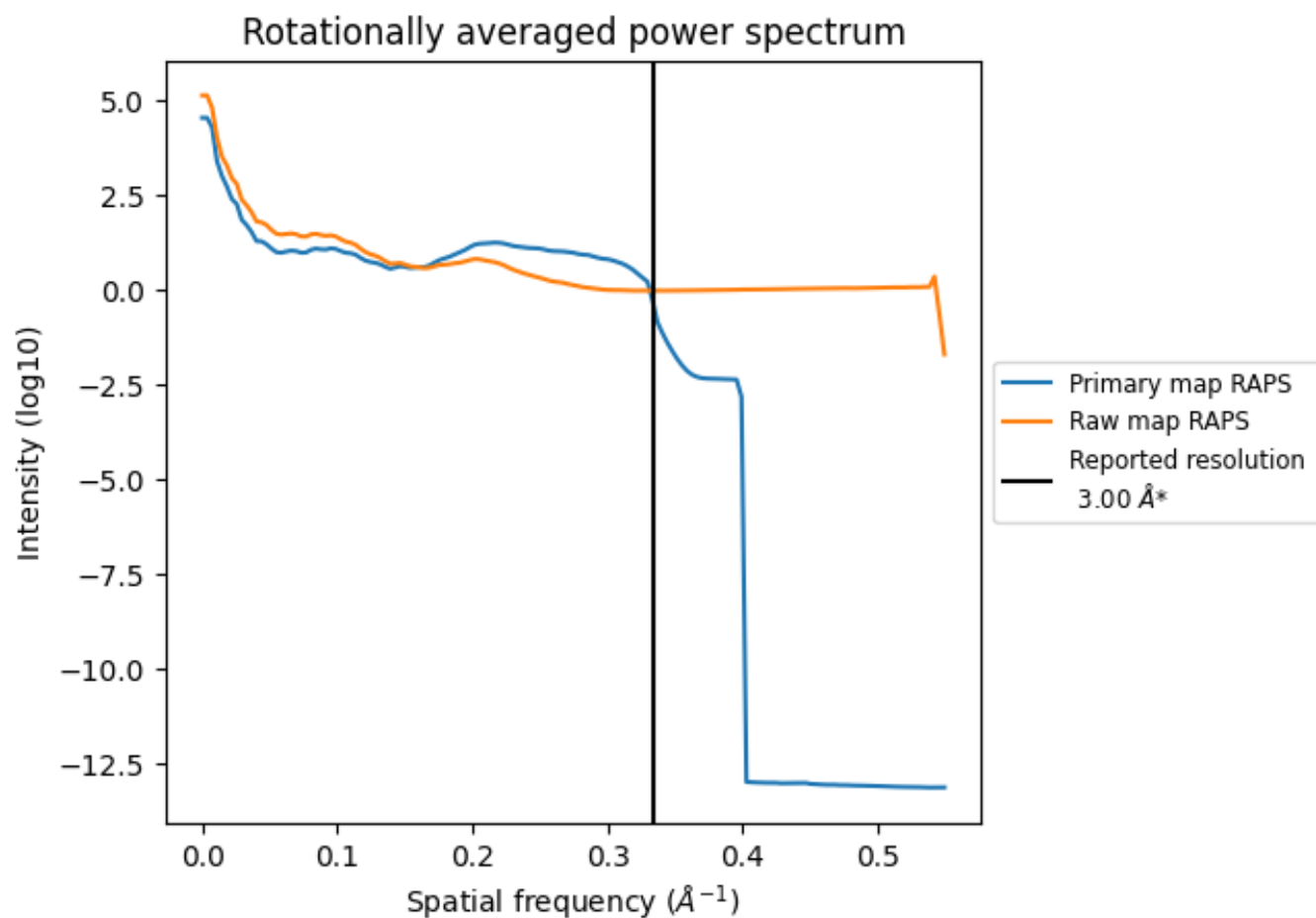
7.2 Volume estimate [i](#)



The volume at the recommended contour level is 105 nm³; this corresponds to an approximate mass of 95 kDa.

The volume estimate graph shows how the enclosed volume varies with the contour level. The recommended contour level is shown as a vertical line and the intersection between the line and the curve gives the volume of the enclosed surface at the given level.

7.3 Rotationally averaged power spectrum ⓘ

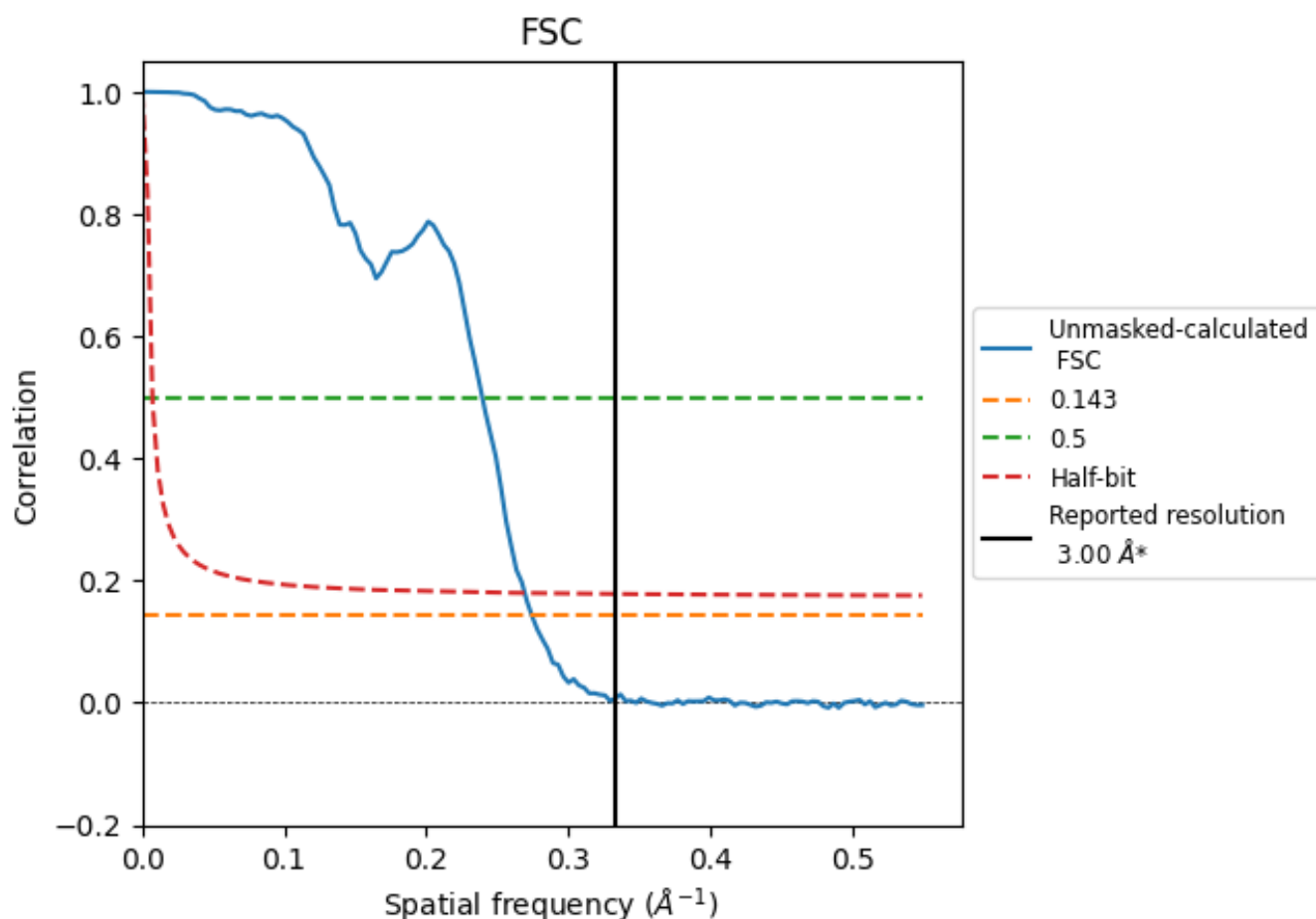


*Reported resolution corresponds to spatial frequency of 0.333 Å⁻¹

8 Fourier-Shell correlation [i](#)

Fourier-Shell Correlation (FSC) is the most commonly used method to estimate the resolution of single-particle and subtomogram-averaged maps. The shape of the curve depends on the imposed symmetry, mask and whether or not the two 3D reconstructions used were processed from a common reference. The reported resolution is shown as a black line. A curve is displayed for the half-bit criterion in addition to lines showing the 0.143 gold standard cut-off and 0.5 cut-off.

8.1 FSC [i](#)



*Reported resolution corresponds to spatial frequency of 0.333 \AA^{-1}

8.2 Resolution estimates [i](#)

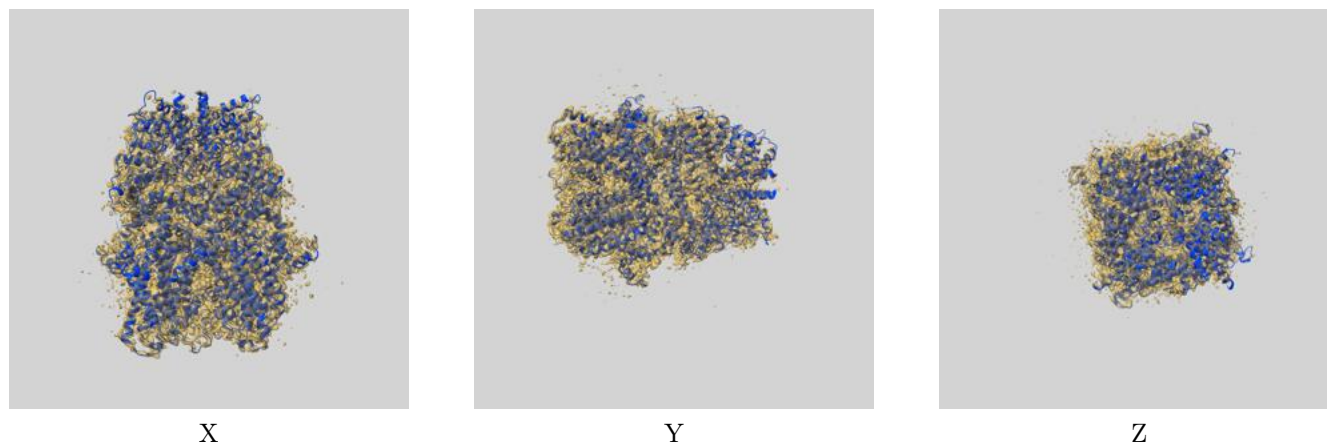
Resolution estimate (Å)	Estimation criterion (FSC cut-off)		
	0.143	0.5	Half-bit
Reported by author	3.00	-	-
Author-provided FSC curve	-	-	-
Unmasked-calculated*	3.64	4.17	3.71

*Resolution estimate based on FSC curve calculated by comparison of deposited half-maps. The value from deposited half-maps intersecting FSC 0.143 CUT-OFF 3.64 differs from the reported value 3.0 by more than 10 %

9 Map-model fit [i](#)

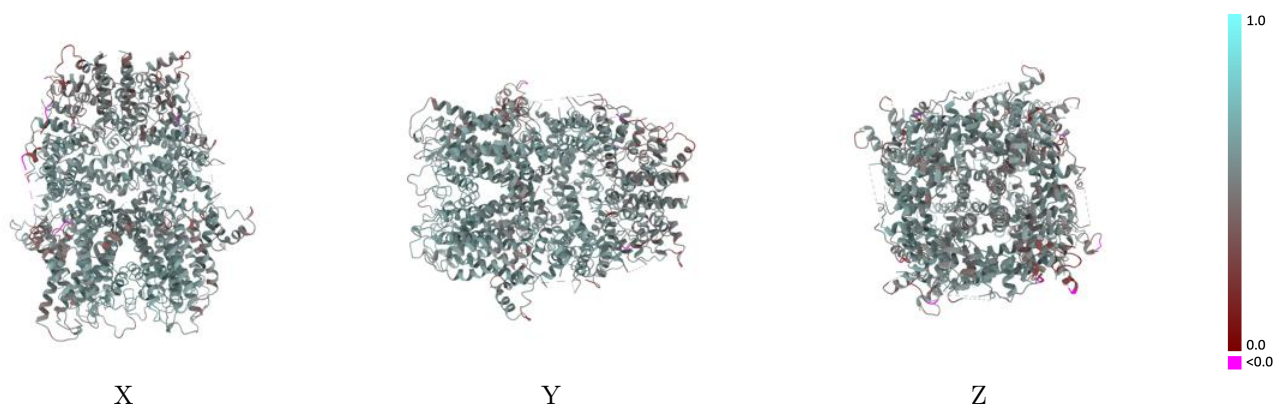
This section contains information regarding the fit between EMDB map EMD-50850 and PDB model 9FXL. Per-residue inclusion information can be found in [section 3](#) on [page 7](#).

9.1 Map-model overlay [i](#)



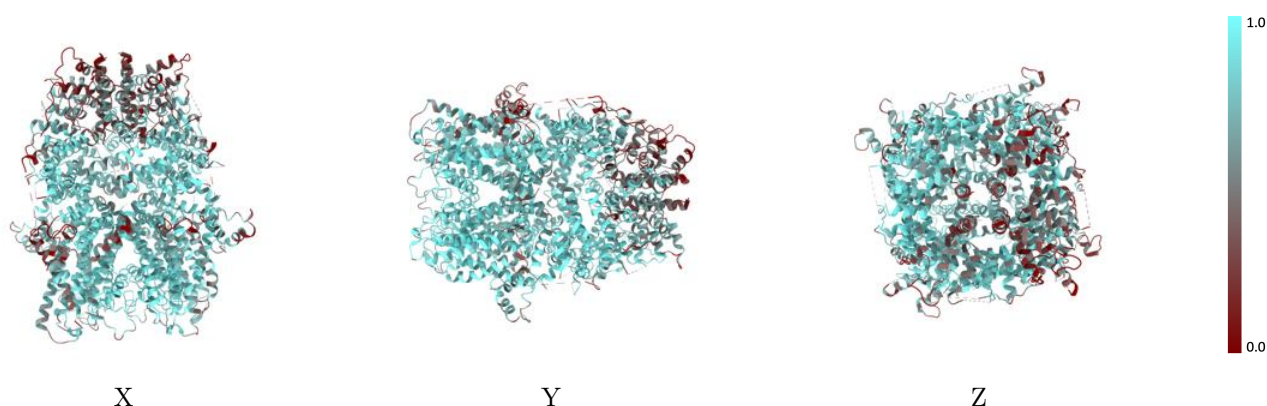
The images above show the 3D surface view of the map at the recommended contour level 0.5 at 50% transparency in yellow overlaid with a ribbon representation of the model coloured in blue. These images allow for the visual assessment of the quality of fit between the atomic model and the map.

9.2 Q-score mapped to coordinate model [i](#)



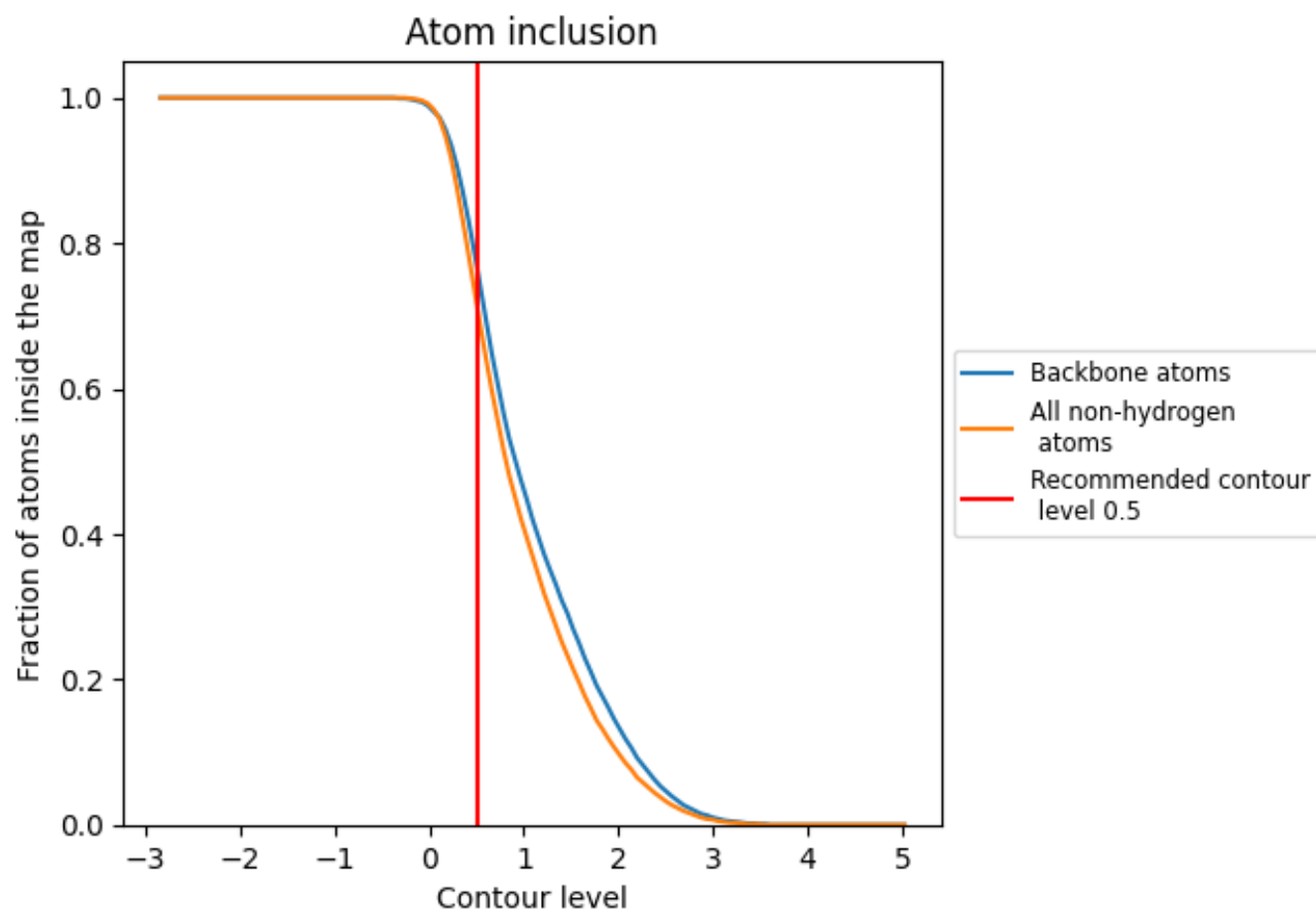
The images above show the model with each residue coloured according to its Q-score. This shows their resolvability in the map with higher Q-score values reflecting better resolvability. Please note: Q-score is calculating the resolvability of atoms, and thus high values are only expected at resolutions at which atoms can be resolved. Low Q-score values may therefore be expected for many entries.

9.3 Atom inclusion mapped to coordinate model [i](#)



The images above show the model with each residue coloured according to its atom inclusion. This shows to what extent they are inside the map at the recommended contour level (0.5).

9.4 Atom inclusion [i](#)



At the recommended contour level, 77% of all backbone atoms, 72% of all non-hydrogen atoms, are inside the map.

9.5 Map-model fit summary ⓘ

The table lists the average atom inclusion at the recommended contour level (0.5) and Q-score for the entire model and for each chain.

Chain	Atom inclusion	Q-score
All	<div></div> 0.7170	<div></div> 0.5370
A	<div></div> 0.7860	<div></div> 0.5480
B	<div></div> 0.6820	<div></div> 0.5280
C	<div></div> 0.6580	<div></div> 0.5260
D	<div></div> 0.7440	<div></div> 0.5440

