



## Full wwPDB EM Validation Report ⓘ

Feb 20, 2025 – 12:06 pm GMT

PDB ID : 9F20  
EMDB ID : EMD-50137  
Title : Cryo-EM structure of the I923V MDA5-dsRNA filament with ADP-AIF4 bound and 88-degree helical twist  
Authors : Singh, R.; Herrero del Valle, A.; Modis, Y.  
Deposited on : 2024-04-20  
Resolution : 4.13 Å(reported)  
Based on initial model : 7NIC

This is a Full wwPDB EM Validation Report for a publicly released PDB entry.

We welcome your comments at [validation@mail.wwpdb.org](mailto:validation@mail.wwpdb.org)

A user guide is available at

<https://www.wwpdb.org/validation/2017/EMValidationReportHelp>  
with specific help available everywhere you see the ⓘ symbol.

The types of validation reports are described at

<http://www.wwpdb.org/validation/2017/FAQs#types>.

---

The following versions of software and data (see [references ⓘ](#)) were used in the production of this report:

EMDB validation analysis : **FAILED**  
Mogul : 1.8.4, CSD as541be (2020)  
MolProbity : 4.02b-467  
buster-report : 1.1.7 (2018)  
Percentile statistics : 20231227.v01 (using entries in the PDB archive December 27th 2023)  
MapQ : **FAILED**  
Ideal geometry (proteins) : Engh & Huber (2001)  
Ideal geometry (DNA, RNA) : Parkinson et al. (1996)  
Validation Pipeline (wwPDB-VP) : 2.41

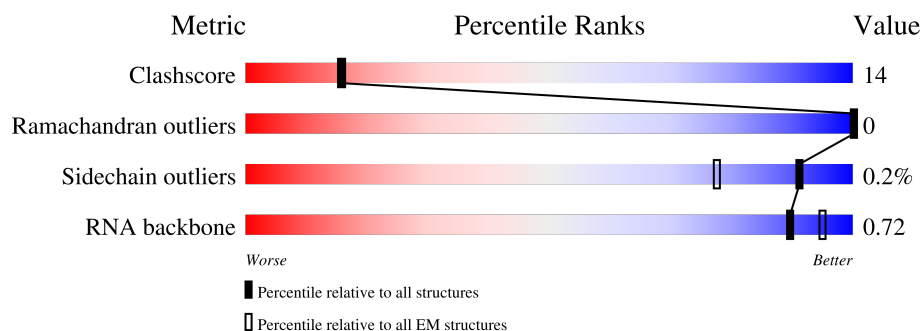
# 1 Overall quality at a glance

The following experimental techniques were used to determine the structure:

*ELECTRON MICROSCOPY*

The reported resolution of this entry is 4.13 Å.

Percentile scores (ranging between 0-100) for global validation metrics of the entry are shown in the following graphic. The table shows the number of entries on which the scores are based.



Metric	Whole archive (#Entries)	EM structures (#Entries)
Clashscore	210492	15764
Ramachandran outliers	207382	16835
Sidechain outliers	206894	16415
RNA backbone	6643	2191

The table below summarises the geometric issues observed across the polymeric chains and their fit to the map. The red, orange, yellow and green segments of the bar indicate the fraction of residues that contain outliers for  $\geq 3$ , 2, 1 and 0 types of geometric quality criteria respectively. A grey segment represents the fraction of residues that are not modelled. The numeric value for each fraction is indicated below the corresponding segment, with a dot representing fractions  $\leq 5\%$ .

Mol	Chain	Length	Quality of chain
1	A	1028	
2	X	15	
3	Y	15	

## 2 Entry composition

There are 6 unique types of molecules in this entry. The entry contains 12038 atoms, of which 5910 are hydrogens and 0 are deuteriums.

In the tables below, the AltConf column contains the number of residues with at least one atom in alternate conformation and the Trace column contains the number of residues modelled with at most 2 atoms.

- Molecule 1 is a protein called Interferon-induced helicase C domain-containing protein 1.

Mol	Chain	Residues	Atoms						AltConf	Trace
1	A	681	Total	C	H	N	O	S	0	0
			11028	3460	5572	946	1015	35		

There are 42 discrepancies between the modelled and reference sequences:

Chain	Residue	Modelled	Actual	Comment	Reference
A	-20	MET	-	initiating methionine	UNP Q8R5F7
A	-19	GLY	-	expression tag	UNP Q8R5F7
A	-18	SER	-	expression tag	UNP Q8R5F7
A	-17	SER	-	expression tag	UNP Q8R5F7
A	-16	HIS	-	expression tag	UNP Q8R5F7
A	-15	HIS	-	expression tag	UNP Q8R5F7
A	-14	HIS	-	expression tag	UNP Q8R5F7
A	-13	HIS	-	expression tag	UNP Q8R5F7
A	-12	HIS	-	expression tag	UNP Q8R5F7
A	-11	HIS	-	expression tag	UNP Q8R5F7
A	-10	SER	-	expression tag	UNP Q8R5F7
A	-9	SER	-	expression tag	UNP Q8R5F7
A	-8	GLY	-	expression tag	UNP Q8R5F7
A	-7	ARG	-	expression tag	UNP Q8R5F7
A	-6	GLU	-	expression tag	UNP Q8R5F7
A	-5	ASN	-	expression tag	UNP Q8R5F7
A	-4	LEU	-	expression tag	UNP Q8R5F7
A	-3	TYR	-	expression tag	UNP Q8R5F7
A	-2	PHE	-	expression tag	UNP Q8R5F7
A	-1	GLN	-	expression tag	UNP Q8R5F7
A	0	GLY	-	expression tag	UNP Q8R5F7
A	1	HIS	-	expression tag	UNP Q8R5F7
A	2	MET	-	expression tag	UNP Q8R5F7
A	?	-	ASP	deletion	UNP Q8R5F7
A	?	-	LYS	deletion	UNP Q8R5F7
A	?	-	SER	deletion	UNP Q8R5F7
A	?	-	ASP	deletion	UNP Q8R5F7
A	?	-	ASP	deletion	UNP Q8R5F7

*Continued on next page...*

*Continued from previous page...*

Chain	Residue	Modelled	Actual	Comment	Reference
A	?	-	GLU	deletion	UNP Q8R5F7
A	?	-	ALA	deletion	UNP Q8R5F7
A	?	-	SER	deletion	UNP Q8R5F7
A	?	-	SER	deletion	UNP Q8R5F7
A	?	-	CYS	deletion	UNP Q8R5F7
A	?	-	ASN	deletion	UNP Q8R5F7
A	?	-	ASP	deletion	UNP Q8R5F7
A	?	-	GLN	deletion	UNP Q8R5F7
A	?	-	LEU	deletion	UNP Q8R5F7
A	?	-	LYS	deletion	UNP Q8R5F7
A	?	-	GLY	deletion	UNP Q8R5F7
A	?	-	ASP	deletion	UNP Q8R5F7
A	?	-	VAL	deletion	UNP Q8R5F7
A	923	VAL	ILE	engineered mutation	UNP Q8R5F7

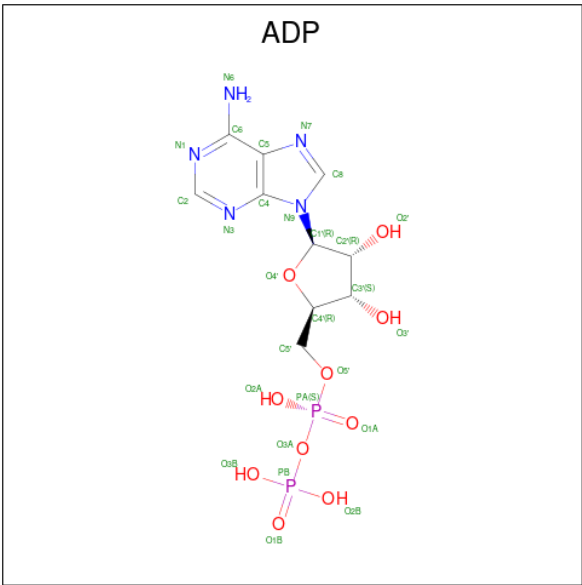
- Molecule 2 is a RNA chain called RNA (5'-R(P\*GP\*UP\*CP\*AP\*AP\*GP\*CP\*CP\*GP\*AP\*GP\*GP\*AP\*GP\*A)-3').

Mol	Chain	Residues	Atoms						AltConf	Trace
2	X	15	Total	C	H	N	O	P	0	0
			493	146	165	66	101	15		

- Molecule 3 is a RNA chain called RNA (5'-R(P\*UP\*CP\*UP\*CP\*CP\*UP\*CP\*GP\*GP\*CP\*UP\*UP\*GP\*AP\*C)-3').

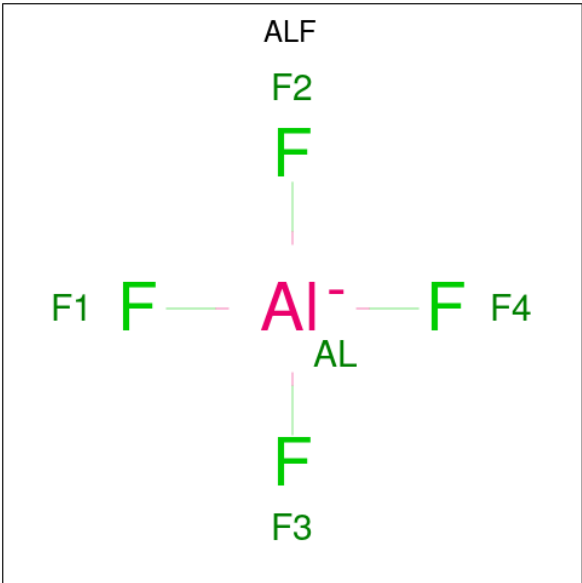
Mol	Chain	Residues	Atoms						AltConf	Trace
3	Y	15	Total	C	H	N	O	P	0	0
			472	139	161	48	109	15		

- Molecule 4 is ADENOSINE-5'-DIPHOSPHATE (three-letter code: ADP) (formula: C<sub>10</sub>H<sub>15</sub>N<sub>5</sub>O<sub>10</sub>P<sub>2</sub>) (labeled as "Ligand of Interest" by depositor).



Mol	Chain	Residues	Atoms						AltConf
4	A	1	Total	C	H	N	O	P	0
			39	10	12	5	10	2	

- Molecule 5 is TETRAFLUOROALUMINATE ION (three-letter code: ALF) (formula:  $\text{AlF}_4$ ) (labeled as "Ligand of Interest" by depositor).



Mol	Chain	Residues	Atoms			AltConf
5	A	1	Total	Al	F	0
			5	1	4	

- Molecule 6 is ZINC ION (three-letter code: ZN) (formula:  $\text{Zn}$ ).

Mol	Chain	Residues	Atoms		AltConf
6	A	1	Total	Zn	0
			1	1	



- Molecule 2: RNA (5'-R(P\*GP\*UP\*CP\*AP\*AP\*GP\*CP\*CP\*GP\*AP\*GP\*GP\*AP\*GP\*A)-3')

Chain X:  60% 40%



- Molecule 3: RNA (5'-R(P\*UP\*CP\*UP\*CP\*CP\*UP\*CP\*GP\*GP\*CP\*UP\*UP\*GP\*AP\*C)-3')

Chain Y:  47% 53%





## 4 Experimental information

Property	Value	Source
EM reconstruction method	HELICAL	Depositor
Imposed symmetry	HELICAL, twist=88.20°, rise=44.50 Å, axial sym=C1	Depositor
Number of segments used	98676	Depositor
Resolution determination method	FSC 0.143 CUT-OFF	Depositor
CTF correction method	PHASE FLIPPING AND AMPLITUDE CORRECTION	Depositor
Microscope	FEI TITAN KRIOS	Depositor
Voltage (kV)	300	Depositor
Electron dose ( $e^-/\text{Å}^2$ )	44	Depositor
Minimum defocus (nm)	500	Depositor
Maximum defocus (nm)	2500	Depositor
Magnification	105000	Depositor
Image detector	GATAN K3 BIOQUANTUM (6k x 4k)	Depositor

## 5 Model quality [i](#)

### 5.1 Standard geometry [i](#)

Bond lengths and bond angles in the following residue types are not validated in this section: ZN, ALF, ADP

The Z score for a bond length (or angle) is the number of standard deviations the observed value is removed from the expected value. A bond length (or angle) with  $|Z| > 5$  is considered an outlier worth inspection. RMSZ is the root-mean-square of all Z scores of the bond lengths (or angles).

Mol	Chain	Bond lengths		Bond angles	
		RMSZ	$\# Z  > 5$	RMSZ	$\# Z  > 5$
1	A	0.27	0/5545	0.50	0/7457
2	X	0.34	0/368	0.86	0/573
3	Y	0.31	0/344	0.93	0/532
All	All	0.27	0/6257	0.56	0/8562

There are no bond length outliers.

There are no bond angle outliers.

There are no chirality outliers.

There are no planarity outliers.

### 5.2 Too-close contacts [i](#)

In the following table, the Non-H and H(model) columns list the number of non-hydrogen atoms and hydrogen atoms in the chain respectively. The H(added) column lists the number of hydrogen atoms added and optimized by MolProbity. The Clashes column lists the number of clashes within the asymmetric unit, whereas Symm-Clashes lists symmetry-related clashes.

Mol	Chain	Non-H	H(model)	H(added)	Clashes	Symm-Clashes
1	A	5456	5572	5570	167	0
2	X	328	165	165	8	0
3	Y	311	161	161	12	0
4	A	27	12	12	0	0
5	A	5	0	0	0	0
6	A	1	0	0	0	0
All	All	6128	5910	5908	172	0

The all-atom clashscore is defined as the number of clashes found per 1000 atoms (including hydrogen atoms). The all-atom clashscore for this structure is 14.

All (172) close contacts within the same asymmetric unit are listed below, sorted by their clash magnitude.

Atom-1	Atom-2	Interatomic distance (Å)	Clash overlap (Å)
2:X:3:C:O2	3:Y:13:G:N2	2.06	0.88
1:A:906:LEU:HD13	1:A:990:ASN:ND2	1.92	0.84
1:A:792:ALA:O	1:A:822:ARG:NH1	2.13	0.81
1:A:723:ILE:HG12	1:A:805:ILE:HD11	1.67	0.76
1:A:621:ILE:HG22	1:A:691:ALA:HB1	1.72	0.72
1:A:927:HIS:NE2	2:X:6:G:O2'	2.24	0.70
1:A:810:VAL:HG11	1:A:843:ARG:HD2	1.74	0.70
1:A:842:GLU:O	1:A:846:VAL:HG23	1.93	0.69
1:A:622:ASP:OD1	1:A:623:ALA:N	2.27	0.68
1:A:625:SER:O	1:A:629:THR:HG23	1.95	0.66
1:A:842:GLU:N	1:A:842:GLU:OE1	2.28	0.66
1:A:795:GLY:O	1:A:822:ARG:NH2	2.29	0.66
1:A:551:PHE:CE1	1:A:555:LEU:HD11	2.31	0.66
1:A:671:GLU:N	1:A:671:GLU:OE1	2.29	0.65
1:A:959:GLU:OE2	1:A:961:ILE:HG23	1.96	0.65
1:A:697:GLU:N	1:A:697:GLU:OE1	2.27	0.65
1:A:644:ASP:OD1	1:A:645:SER:N	2.31	0.64
1:A:378:PHE:HZ	1:A:410:VAL:HG11	1.62	0.63
1:A:360:VAL:HG23	1:A:410:VAL:HG13	1.79	0.63
1:A:635:LYS:NZ	1:A:677:MET:SD	2.65	0.63
1:A:805:ILE:HG22	1:A:831:VAL:HB	1.80	0.63
1:A:962:CYS:SG	1:A:963:LYS:N	2.72	0.63
1:A:486:LEU:HD21	1:A:488:LEU:HD21	1.81	0.62
1:A:899:ASN:HB3	1:A:902:LEU:HD13	1.81	0.61
1:A:791:VAL:HG13	3:Y:6:U:H5''	1.82	0.61
1:A:1001:LYS:O	1:A:1001:LYS:HD2	2.00	0.61
1:A:573:ASP:O	1:A:576:THR:HG22	2.00	0.61
1:A:981:CYS:SG	1:A:982:LEU:N	2.73	0.60
1:A:451:LYS:O	1:A:460:ARG:NH2	2.35	0.60
1:A:393:GLY:N	3:Y:9:G:OP1	2.33	0.60
1:A:470:ASN:HA	1:A:473:LYS:HD2	1.84	0.60
1:A:723:ILE:HD12	1:A:785:LEU:HD21	1.83	0.59
1:A:729:GLN:OE1	1:A:729:GLN:N	2.31	0.59
1:A:562:ILE:HD11	1:A:679:LEU:HD23	1.85	0.58
1:A:759:HIS:ND1	1:A:765:PRO:HD3	2.19	0.58
1:A:972:MET:CE	1:A:981:CYS:HB2	2.33	0.58
1:A:401:PHE:O	1:A:404:VAL:HG22	2.04	0.57
1:A:906:LEU:HG	1:A:913:LEU:HA	1.87	0.57
1:A:901:SER:C	1:A:902:LEU:HD12	2.24	0.57
1:A:378:PHE:CZ	1:A:410:VAL:HG11	2.39	0.57

*Continued on next page...*

*Continued from previous page...*

Atom-1	Atom-2	Interatomic distance (Å)	Clash overlap (Å)
1:A:446:CYS:SG	1:A:488:LEU:N	2.78	0.57
1:A:712:PHE:CD2	1:A:749:VAL:HG22	2.40	0.57
1:A:509:ASN:HA	1:A:876:LEU:HD13	1.85	0.57
1:A:728:ARG:NH1	3:Y:6:U:OP1	2.39	0.56
1:A:551:PHE:HE1	1:A:555:LEU:HD11	1.71	0.56
1:A:906:LEU:HD13	1:A:990:ASN:HD22	1.71	0.55
1:A:810:VAL:CG1	1:A:843:ARG:HD2	2.34	0.55
1:A:584:ILE:HG21	3:Y:2:C:H4'	1.89	0.55
1:A:444:ASP:OD1	1:A:445:GLU:N	2.40	0.55
1:A:972:MET:HE1	1:A:981:CYS:HB2	1.88	0.55
1:A:614:ILE:O	1:A:618:ILE:N	2.33	0.54
1:A:573:ASP:OD1	1:A:574:PHE:N	2.40	0.54
1:A:939:TYR:CD1	1:A:960:ILE:HG23	2.42	0.54
1:A:832:LEU:HG	1:A:834:THR:HG23	1.89	0.54
1:A:871:HIS:NE2	1:A:875:GLU:OE2	2.42	0.53
1:A:366:LYS:CG	1:A:369:LEU:HD23	2.39	0.53
1:A:349:ASP:OD1	1:A:386:TYR:OH	2.28	0.52
1:A:942:ARG:HD3	1:A:959:GLU:OE2	2.10	0.52
1:A:361:ILE:HB	1:A:438:PHE:CE2	2.45	0.52
1:A:617:THR:O	1:A:807:TYR:OH	2.25	0.52
1:A:369:LEU:HD21	1:A:795:GLY:HA3	1.91	0.51
1:A:814:ILE:O	1:A:817:VAL:HG12	2.11	0.51
1:A:470:ASN:N	1:A:473:LYS:HZ2	2.08	0.51
1:A:561:SER:O	1:A:564:THR:OG1	2.26	0.51
1:A:769:THR:HG21	2:X:2:U:P	2.50	0.51
1:A:962:CYS:N	1:A:966:GLN:O	2.36	0.51
1:A:1003:TRP:O	1:A:1006:LEU:HG	2.11	0.51
1:A:511:CYS:SG	1:A:519:ILE:HD11	2.51	0.51
1:A:925:LYS:N	1:A:925:LYS:HD3	2.27	0.50
1:A:934:GLU:OE1	1:A:934:GLU:N	2.39	0.50
1:A:417:ILE:HD11	3:Y:9:G:H5''	1.93	0.50
1:A:459:MET:HE3	1:A:459:MET:HA	1.94	0.50
1:A:401:PHE:HE2	1:A:433:VAL:HG11	1.77	0.50
1:A:761:SER:OG	3:Y:5:C:OP1	2.29	0.50
1:A:501:SER:OG	1:A:505:LYS:NZ	2.38	0.49
1:A:982:LEU:HD12	1:A:987:PHE:CE1	2.47	0.49
1:A:809:LEU:HD12	1:A:809:LEU:C	2.33	0.49
1:A:960:ILE:HD11	1:A:971:MET:SD	2.53	0.49
1:A:576:THR:HG23	1:A:579:TYR:H	1.77	0.49
1:A:874:LEU:O	1:A:874:LEU:HD23	2.13	0.48
1:A:814:ILE:HD12	1:A:814:ILE:H	1.77	0.48

*Continued on next page...*

*Continued from previous page...*

Atom-1	Atom-2	Interatomic distance (Å)	Clash overlap (Å)
1:A:416:GLN:HA	1:A:419:GLU:HB3	1.96	0.48
1:A:811:THR:O	2:X:13:A:H4'	2.14	0.48
1:A:810:VAL:CG1	1:A:843:ARG:CD	2.92	0.48
1:A:922:VAL:HG22	1:A:928:HIS:ND1	2.29	0.48
1:A:711:GLN:HB3	1:A:803:ILE:HD11	1.95	0.47
1:A:367:VAL:HG23	1:A:392:SER:HB2	1.96	0.47
1:A:440:LEU:HD12	1:A:441:ILE:N	2.29	0.47
1:A:598:ASP:OD1	1:A:599:ARG:N	2.47	0.47
1:A:707:THR:O	1:A:711:GLN:OE1	2.33	0.47
1:A:418:LEU:O	1:A:422:LEU:HD13	2.14	0.47
1:A:340:ALA:O	1:A:344:THR:HG23	2.14	0.47
1:A:462:TYR:CZ	1:A:485:ILE:HD11	2.50	0.47
1:A:465:GLN:HG3	1:A:482:LEU:HD21	1.96	0.47
1:A:621:ILE:CG2	1:A:691:ALA:HB1	2.44	0.46
1:A:618:ILE:HG22	1:A:619:ARG:N	2.30	0.46
1:A:707:THR:HG22	1:A:711:GLN:OE1	2.15	0.46
1:A:814:ILE:O	1:A:818:GLN:OE1	2.33	0.46
3:Y:1:U:H2'	3:Y:2:C:C6	2.51	0.46
1:A:405:VAL:HA	1:A:411:ILE:HD11	1.98	0.46
1:A:359:LYS:NZ	1:A:409:ASP:OD1	2.43	0.46
1:A:497:ALA:HB1	1:A:502:GLU:HB3	1.98	0.46
1:A:627:LEU:HA	1:A:630:PHE:CE2	2.51	0.46
3:Y:1:U:H2'	3:Y:2:C:H6	1.80	0.45
1:A:554:LYS:NZ	1:A:557:GLU:OE1	2.46	0.45
1:A:743:LYS:O	1:A:746:GLU:HG3	2.16	0.45
1:A:780:THR:HG23	1:A:782:GLU:H	1.82	0.45
1:A:583:ALA:O	1:A:586:MET:N	2.49	0.45
1:A:316:VAL:HG23	1:A:520:LYS:O	2.17	0.45
1:A:310:ARG:NH2	1:A:532:GLN:OE1	2.50	0.45
1:A:402:PRO:O	1:A:405:VAL:HB	2.17	0.45
1:A:555:LEU:HA	1:A:558:ILE:HD12	1.99	0.45
1:A:583:ALA:O	1:A:587:GLU:OE1	2.34	0.45
1:A:738:ILE:HG23	1:A:744:PHE:CD2	2.52	0.44
1:A:341:VAL:HG23	1:A:378:PHE:CD1	2.53	0.44
1:A:767:THR:HG21	2:X:3:C:OP1	2.17	0.44
1:A:477:LYS:N	1:A:478:PRO:HD2	2.33	0.44
1:A:785:LEU:HD23	1:A:785:LEU:C	2.38	0.44
1:A:641:VAL:O	1:A:644:ASP:OD1	2.35	0.43
1:A:324:LYS:O	1:A:326:ILE:HG23	2.18	0.43
1:A:587:GLU:HB3	1:A:602:ALA:HB3	2.00	0.43
1:A:730:SER:O	1:A:734:LEU:HG	2.18	0.43

*Continued on next page...*

*Continued from previous page...*

Atom-1	Atom-2	Interatomic distance (Å)	Clash overlap (Å)
1:A:777:LYS:HA	1:A:780:THR:HG22	2.01	0.43
1:A:769:THR:HG21	2:X:2:U:OP1	2.18	0.43
1:A:465:GLN:CG	1:A:482:LEU:HD21	2.47	0.43
1:A:1000:TYR:CD2	1:A:1006:LEU:HB3	2.53	0.43
1:A:535:GLU:OE2	1:A:820:ARG:NH1	2.52	0.43
1:A:433:VAL:HG22	1:A:434:GLN:N	2.34	0.43
1:A:497:ALA:HB1	1:A:502:GLU:CB	2.49	0.43
1:A:754:LEU:CD2	1:A:791:VAL:HG21	2.49	0.43
1:A:811:THR:HG23	2:X:13:A:O4'	2.18	0.43
1:A:1000:TYR:O	1:A:1001:LYS:HB3	2.18	0.43
1:A:728:ARG:HH12	3:Y:6:U:P	2.42	0.43
1:A:529:LEU:O	1:A:529:LEU:HD23	2.19	0.42
1:A:810:VAL:HG13	1:A:810:VAL:O	2.18	0.42
3:Y:4:C:H2'	3:Y:5:C:O4'	2.19	0.42
1:A:994:ASN:OD1	1:A:996:PRO:HD3	2.19	0.42
1:A:309:LEU:HD12	1:A:310:ARG:N	2.33	0.42
2:X:8:C:H2'	2:X:9:G:C8	2.54	0.42
1:A:714:ARG:N	1:A:714:ARG:HD3	2.35	0.42
1:A:603:GLU:O	1:A:607:LYS:HG2	2.19	0.42
1:A:338:ARG:O	1:A:341:VAL:HG12	2.18	0.42
1:A:903:ILE:HG21	1:A:989:VAL:HG13	2.02	0.42
1:A:325:ASN:N	1:A:325:ASN:OD1	2.53	0.42
1:A:563:GLN:O	1:A:567:GLN:N	2.52	0.42
1:A:425:LEU:HD13	1:A:433:VAL:O	2.20	0.41
1:A:450:ASN:OD1	1:A:451:LYS:N	2.52	0.41
1:A:640:ALA:HB1	1:A:940:ILE:HG21	2.02	0.41
1:A:313:GLN:HB3	1:A:339:VAL:HG22	2.02	0.41
1:A:778:PHE:HE2	1:A:798:ILE:HD13	1.85	0.41
1:A:459:MET:HE2	1:A:485:ILE:HD13	2.02	0.41
1:A:703:LYS:N	1:A:703:LYS:HD3	2.36	0.41
1:A:336:LYS:NZ	1:A:490:ALA:HB2	2.35	0.41
1:A:809:LEU:HD12	1:A:809:LEU:O	2.20	0.41
1:A:365:ASN:N	1:A:455:TYR:OH	2.54	0.41
1:A:604:HIS:O	1:A:608:TYR:CD2	2.74	0.41
1:A:728:ARG:NH1	3:Y:6:U:P	2.94	0.41
1:A:366:LYS:HG2	1:A:369:LEU:HD23	2.02	0.41
1:A:738:ILE:HG23	1:A:744:PHE:CG	2.56	0.41
1:A:743:LYS:O	1:A:747:VAL:HG23	2.20	0.41
1:A:446:CYS:HB3	1:A:514:LEU:HD21	2.04	0.40
1:A:522:VAL:HG13	1:A:526:LEU:HD13	2.03	0.40
1:A:551:PHE:CE2	1:A:687:LEU:HD22	2.56	0.40

*Continued on next page...*

*Continued from previous page...*

Atom-1	Atom-2	Interatomic distance (Å)	Clash overlap (Å)
1:A:810:VAL:HG13	1:A:843:ARG:CD	2.51	0.40
1:A:791:VAL:HG23	1:A:792:ALA:N	2.36	0.40
1:A:940:ILE:HG22	1:A:941:VAL:N	2.36	0.40
1:A:971:MET:SD	1:A:980:PRO:HB3	2.61	0.40
1:A:903:ILE:HG22	1:A:904:THR:N	2.36	0.40
1:A:539:LYS:HB3	1:A:830:TYR:O	2.21	0.40
1:A:472:LEU:O	1:A:476:ASN:N	2.47	0.40
1:A:725:THR:HA	1:A:809:LEU:HD23	2.03	0.40
1:A:959:GLU:HA	1:A:970:THR:HA	2.02	0.40

There are no symmetry-related clashes.

## 5.3 Torsion angles [i](#)

### 5.3.1 Protein backbone [i](#)

In the following table, the Percentiles column shows the percent Ramachandran outliers of the chain as a percentile score with respect to all PDB entries followed by that with respect to all EM entries.

The Analysed column shows the number of residues for which the backbone conformation was analysed, and the total number of residues.

Mol	Chain	Analysed	Favoured	Allowed	Outliers	Percentiles	
1	A	675/1028 (66%)	631 (94%)	44 (6%)	0	100	100

There are no Ramachandran outliers to report.

### 5.3.2 Protein sidechains [i](#)

In the following table, the Percentiles column shows the percent sidechain outliers of the chain as a percentile score with respect to all PDB entries followed by that with respect to all EM entries.

The Analysed column shows the number of residues for which the sidechain conformation was analysed, and the total number of residues.

Mol	Chain	Analysed	Rotameric	Outliers	Percentiles	
1	A	606/918 (66%)	605 (100%)	1 (0%)	92	94

All (1) residues with a non-rotameric sidechain are listed below:

Mol	Chain	Res	Type
1	A	1009	ARG

Sometimes sidechains can be flipped to improve hydrogen bonding and reduce clashes. There are no such sidechains identified.

### 5.3.3 RNA [i](#)

Mol	Chain	Analysed	Backbone Outliers	Pucker Outliers
2	X	14/15 (93%)	0	0
3	Y	14/15 (93%)	1 (7%)	0
All	All	28/30 (93%)	1 (3%)	0

All (1) RNA backbone outliers are listed below:

Mol	Chain	Res	Type
3	Y	8	G

There are no RNA pucker outliers to report.

## 5.4 Non-standard residues in protein, DNA, RNA chains [i](#)

There are no non-standard protein/DNA/RNA residues in this entry.

## 5.5 Carbohydrates [i](#)

There are no oligosaccharides in this entry.

## 5.6 Ligand geometry [i](#)

Of 3 ligands modelled in this entry, 1 is monoatomic - leaving 2 for Mogul analysis.

In the following table, the Counts columns list the number of bonds (or angles) for which Mogul statistics could be retrieved, the number of bonds (or angles) that are observed in the model and the number of bonds (or angles) that are defined in the Chemical Component Dictionary. The Link column lists molecule types, if any, to which the group is linked. The Z score for a bond length (or angle) is the number of standard deviations the observed value is removed from the expected value. A bond length (or angle) with  $|Z| > 2$  is considered an outlier worth inspection. RMSZ is the root-mean-square of all Z scores of the bond lengths (or angles).



Mol	Type	Chain	Res	Link	Bond lengths			Bond angles		
					Counts	RMSZ	# Z  > 2	Counts	RMSZ	# Z  > 2
5	ALF	A	1102	-	0,4,4	-	-	-	-	-
4	ADP	A	1101	-	24,29,29	0.97	1 (4%)	29,45,45	1.56	4 (13%)

In the following table, the Chirals column lists the number of chiral outliers, the number of chiral centers analysed, the number of these observed in the model and the number defined in the Chemical Component Dictionary. Similar counts are reported in the Torsion and Rings columns. '-' means no outliers of that kind were identified.

Mol	Type	Chain	Res	Link	Chirals	Torsions	Rings
4	ADP	A	1101	-	-	3/12/32/32	0/3/3/3

All (1) bond length outliers are listed below:

Mol	Chain	Res	Type	Atoms	Z	Observed(Å)	Ideal(Å)
4	A	1101	ADP	C5-C4	2.44	1.47	1.40

All (4) bond angle outliers are listed below:

Mol	Chain	Res	Type	Atoms	Z	Observed(°)	Ideal(°)
4	A	1101	ADP	PA-O3A-PB	-4.10	118.77	132.83
4	A	1101	ADP	N3-C2-N1	-3.63	123.00	128.68
4	A	1101	ADP	C3'-C2'-C1'	3.30	105.95	100.98
4	A	1101	ADP	C4-C5-N7	-2.81	106.47	109.40

There are no chirality outliers.

All (3) torsion outliers are listed below:

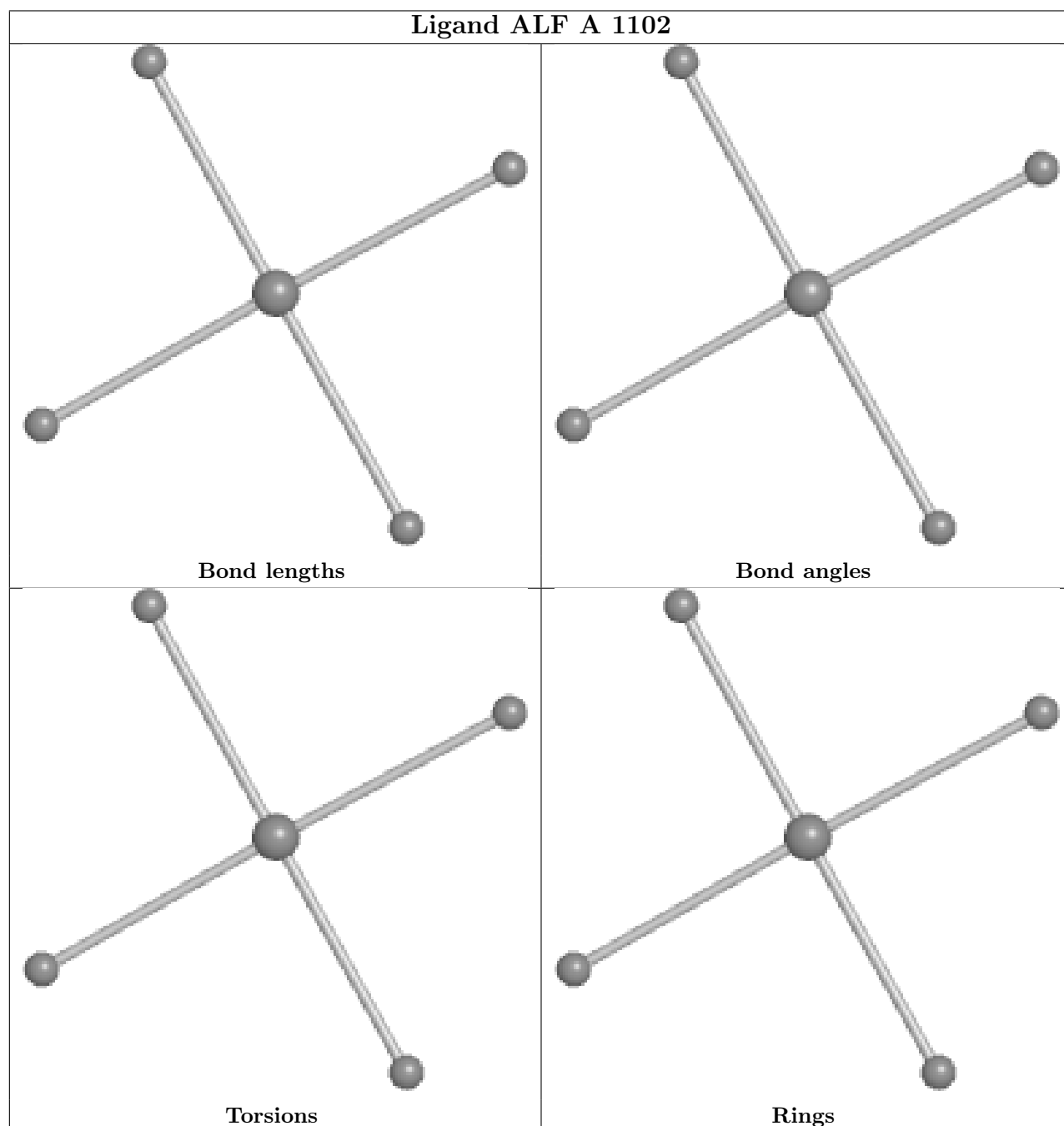
Mol	Chain	Res	Type	Atoms
4	A	1101	ADP	C5'-O5'-PA-O1A
4	A	1101	ADP	C3'-C4'-C5'-O5'
4	A	1101	ADP	C5'-O5'-PA-O3A

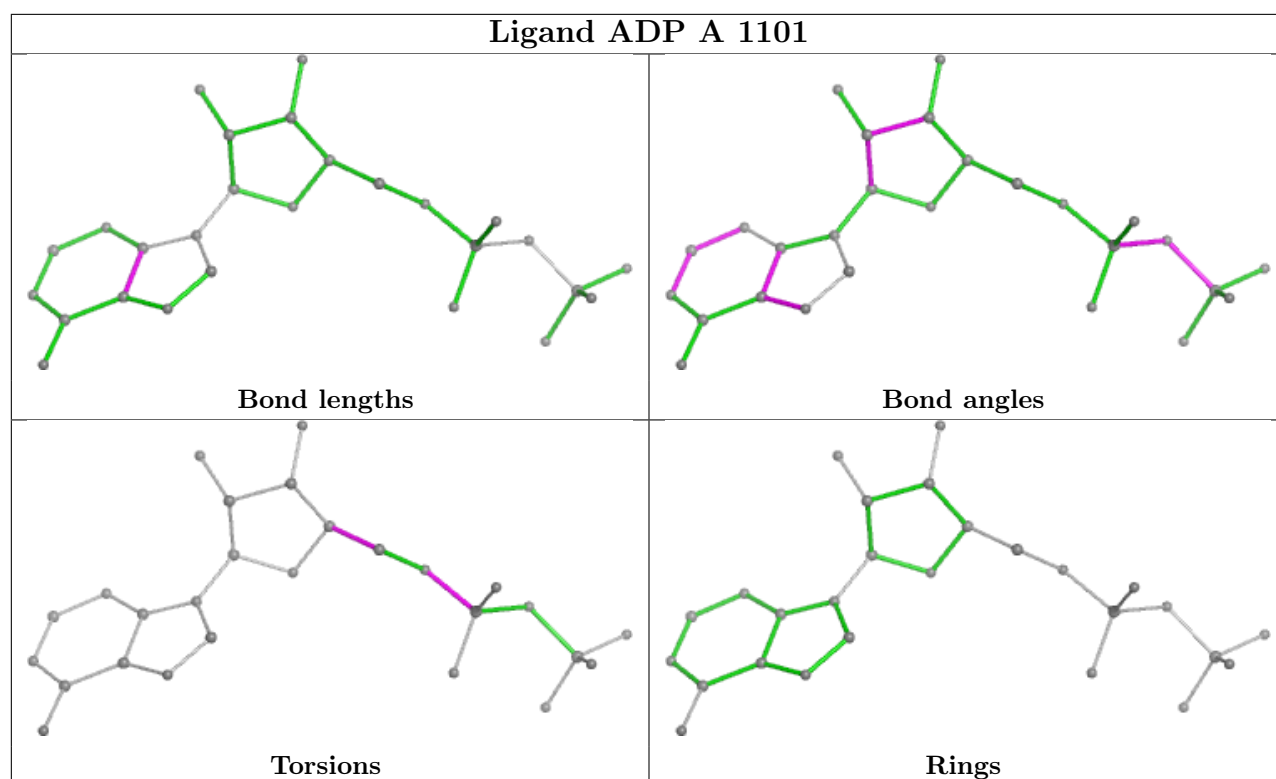
There are no ring outliers.

No monomer is involved in short contacts.

The following is a two-dimensional graphical depiction of Mogul quality analysis of bond lengths, bond angles, torsion angles, and ring geometry for all instances of the Ligand of Interest. In addition, ligands with molecular weight > 250 and outliers as shown on the validation Tables will also be included. For torsion angles, if less than 5% of the Mogul distribution of torsion angles is within 10 degrees of the torsion angle in question, then that torsion angle is considered an outlier. Any bond that is central to one or more torsion angles identified as an outlier by Mogul will be

highlighted in the graph. For rings, the root-mean-square deviation (RMSD) between the ring in question and similar rings identified by Mogul is calculated over all ring torsion angles. If the average RMSD is greater than 60 degrees and the minimal RMSD between the ring in question and any Mogul-identified rings is also greater than 60 degrees, then that ring is considered an outlier. The outliers are highlighted in purple. The color gray indicates Mogul did not find sufficient equivalents in the CSD to analyse the geometry.





## 5.7 Other polymers [i](#)

There are no such residues in this entry.

## 5.8 Polymer linkage issues [i](#)

There are no chain breaks in this entry.