



wwPDB X-ray Structure Validation Summary Report ⓘ

Nov 24, 2025 – 02:08 PM EST

PDB ID : 9ELU / pdb_00009elu
Title : CRYSTAL STRUCTURE OF RHESUS MACAQUE (MACACA MULATTA)
IGG1 FC FRAGMENT- FC-GAMMA RECEPTOR IIA COMPLEX P131
VARIANT
Authors : Tolbert, W.D.; Pazgier, M.
Deposited on : 2024-12-05
Resolution : 2.65 Å(reported)

This is a wwPDB X-ray Structure Validation Summary Report for a publicly released PDB entry.

We welcome your comments at validation@mail.wwpdb.org

A user guide is available at

<https://www.wwpdb.org/validation/2017/XrayValidationReportHelp>

with specific help available everywhere you see the ⓘ symbol.

The types of validation reports are described at

<http://www.wwpdb.org/validation/2017/FAQs#types>.

The following versions of software and data (see [references ⓘ](#)) were used in the production of this report:

MolProbity : 4-5-2 with Phenix2.0
Mogul : 2022.3.0, CSD as543be (2022)
Xtriage (Phenix) : 2.0
EDS : 3.0
Percentile statistics : 20231227.v01 (using entries in the PDB archive December 27th 2023)
CCP4 : 9.0.010 (Gargrove)
Density-Fitness : 1.0.12
Ideal geometry (proteins) : Engh & Huber (2001)
Ideal geometry (DNA, RNA) : Parkinson et al. (1996)
Validation Pipeline (wwPDB-VP) : 2.46

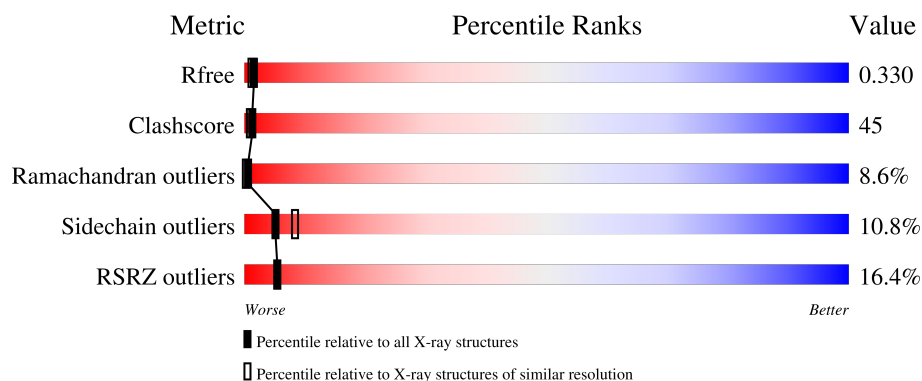
1 Overall quality at a glance

The following experimental techniques were used to determine the structure:

X-RAY DIFFRACTION

The reported resolution of this entry is 2.65 Å.

Percentile scores (ranging between 0-100) for global validation metrics of the entry are shown in the following graphic. The table shows the number of entries on which the scores are based.




Metric	Whole archive (#Entries)	Similar resolution (#Entries, resolution range(Å))
R_{free}	164625	1003 (2.66-2.66)
Clashscore	180529	1063 (2.66-2.66)
Ramachandran outliers	177936	1052 (2.66-2.66)
Sidechain outliers	177891	1052 (2.66-2.66)
RSRZ outliers	164620	1003 (2.66-2.66)

The table below summarises the geometric issues observed across the polymeric chains and their fit to the electron density. The red, orange, yellow and green segments of the lower bar indicate the fraction of residues that contain outliers for ≥ 3 , 2, 1 and 0 types of geometric quality criteria respectively. A grey segment represents the fraction of residues that are not modelled. The numeric value for each fraction is indicated below the corresponding segment, with a dot representing fractions $\leq 5\%$. The upper red bar (where present) indicates the fraction of residues that have poor fit to the electron density. The numeric value is given above the bar.

Mol	Chain	Length	Quality of chain
1	A	224	
1	B	224	
2	C	174	
3	D	9	
4	E	8	

Continued on next page...

Continued from previous page...

Mol	Chain	Length	Quality of chain
5	G	3	

The following table lists non-polymeric compounds, carbohydrate monomers and non-standard residues in protein, DNA, RNA chains that are outliers for geometric or electron-density-fit criteria:

Mol	Type	Chain	Res	Chirality	Geometry	Clashes	Electron density
4	NAG	E	2	-	-	X	-

2 Entry composition [i](#)

There are 7 unique types of molecules in this entry. The entry contains 5058 atoms, of which 0 are hydrogens and 0 are deuteriums.

In the tables below, the ZeroOcc column contains the number of atoms modelled with zero occupancy, the AltConf column contains the number of residues with at least one atom in alternate conformation and the Trace column contains the number of residues modelled with at most 2 atoms.

- Molecule 1 is a protein called IgG1 Fc.

Mol	Chain	Residues	Atoms					ZeroOcc	AltConf	Trace
1	A	215	Total	C	N	O	S	0	0	0
			1708	1085	286	331	6			
1	B	214	Total	C	N	O	S	0	0	0
			1701	1080	285	330	6			

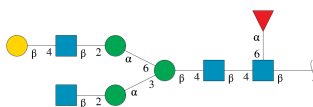
- Molecule 2 is a protein called IgG receptor IIA (CD32A) P131 variant Fc fragment.

Mol	Chain	Residues	Atoms					ZeroOcc	AltConf	Trace
2	C	173	Total	C	N	O	S	0	3	0
			1386	872	245	262	7			

There are 2 discrepancies between the modelled and reference sequences:

Chain	Residue	Modelled	Actual	Comment	Reference
C	0	GLY	-	insertion	UNP F6TRF8
C	131	PRO	HIS	variant	UNP F6TRF8

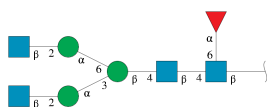
- Molecule 3 is an oligosaccharide called beta-D-galactopyranose-(1-4)-2-acetamido-2-deoxy-beta-D-glucopyranose-(1-2)-alpha-D-mannopyranose-(1-6)-[2-acetamido-2-deoxy-beta-D-glucopyranose-(1-2)-alpha-D-mannopyranose-(1-3)]beta-D-mannopyranose-(1-4)-2-acetamido-2-deoxy-beta-D-glucopyranose-(1-4)-[alpha-L-fucopyranose-(1-6)]2-acetamido-2-deoxy-beta-D-glucopyranose.



Mol	Chain	Residues	Atoms				ZeroOcc	AltConf	Trace
3	D	9	Total	C	N	O	0	0	0
			110	62	4	44			

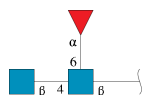
- Molecule 4 is an oligosaccharide called 2-acetamido-2-deoxy-beta-D-glucopyranose-(1-2)-alp

ha-D-mannopyranose-(1-3)-[2-acetamido-2-deoxy-beta-D-glucopyranose-(1-2)-alpha-D-mannopyranose-(1-6)]beta-D-mannopyranose-(1-4)-2-acetamido-2-deoxy-beta-D-glucopyranose-(1-4)-[alpha-L-fucopyranose-(1-6)]2-acetamido-2-deoxy-beta-D-glucopyranose.



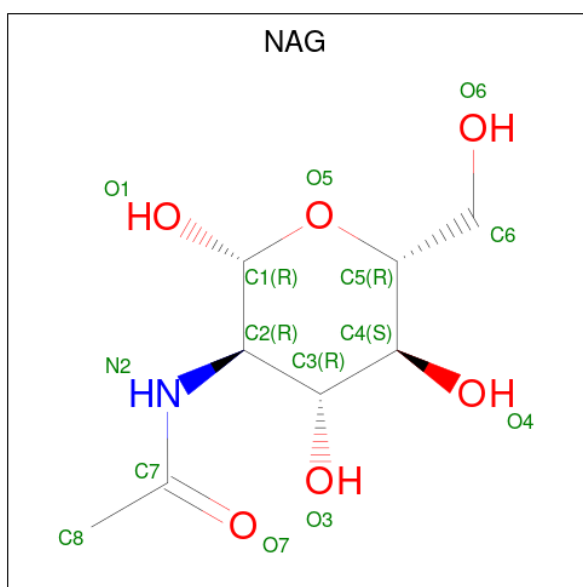
Mol	Chain	Residues	Atoms				ZeroOcc	AltConf	Trace
4	E	8	Total	C	N	O	0	0	0
			99	56	4	39			

- Molecule 5 is an oligosaccharide called 2-acetamido-2-deoxy-beta-D-glucopyranose-(1-4)-[alpha-L-fucopyranose-(1-6)]2-acetamido-2-deoxy-beta-D-glucopyranose.



Mol	Chain	Residues	Atoms				ZeroOcc	AltConf	Trace
5	G	3	Total	C	N	O	0	0	0
			38	22	2	14			

- Molecule 6 is 2-acetamido-2-deoxy-beta-D-glucopyranose (CCD ID: NAG) (formula: C₈H₁₅NO₆).



Mol	Chain	Residues	Atoms				ZeroOcc	AltConf
6	C	1	Total	C	N	O	0	0
			14	8	1	5		

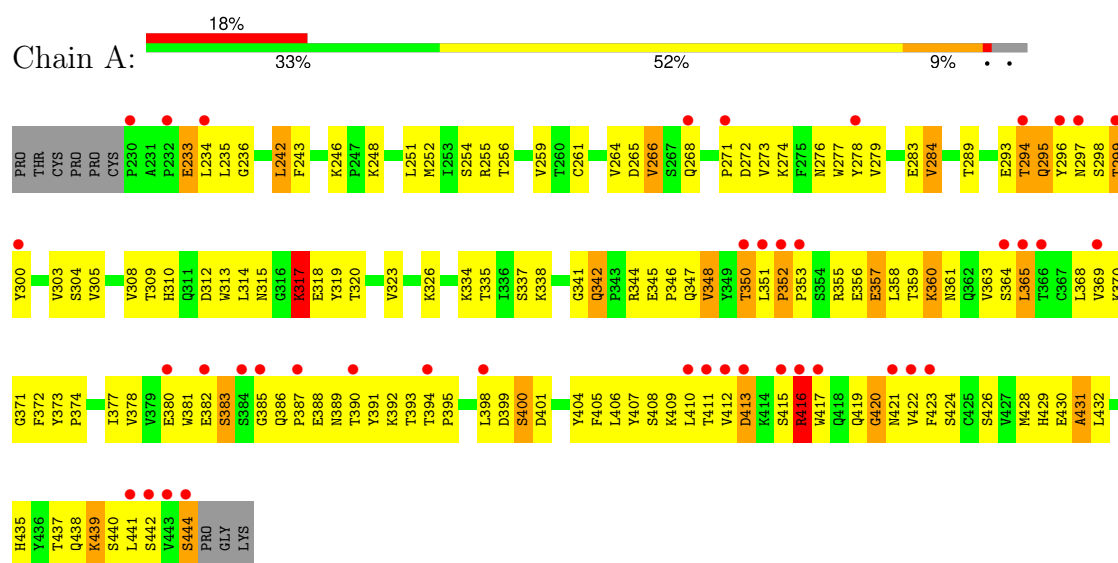
- Molecule 7 is water.

Mol	Chain	Residues	Atoms		ZeroOcc	AltConf
7	A	1	Total	O	0	0
			1	1		
7	C	1	Total	O	0	0
			1	1		

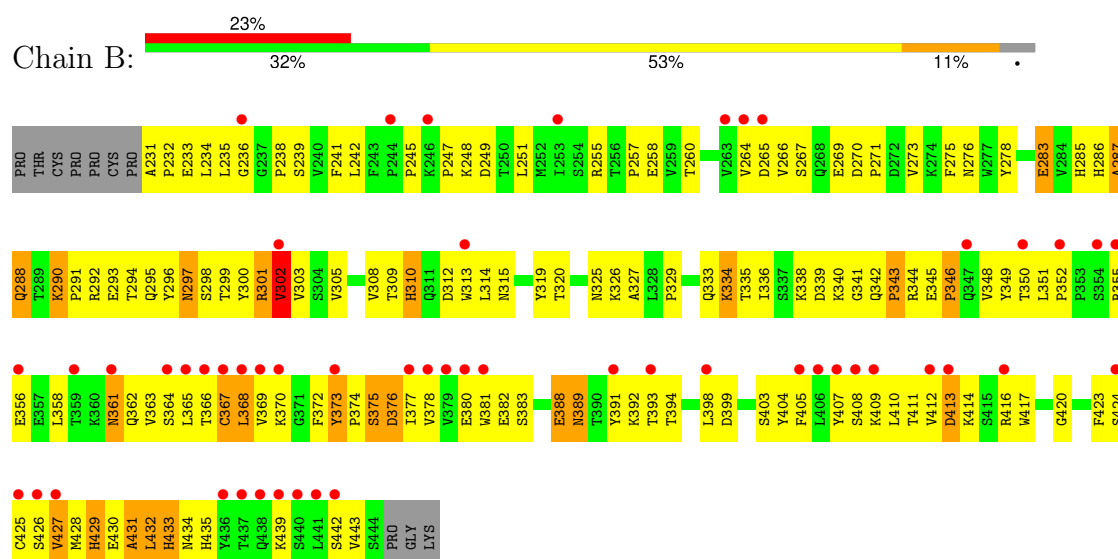
3 Residue-property plots [i](#)

These plots are drawn for all protein, RNA, DNA and oligosaccharide chains in the entry. The first graphic for a chain summarises the proportions of the various outlier classes displayed in the second graphic. The second graphic shows the sequence view annotated by issues in geometry and electron density. Residues are color-coded according to the number of geometric quality criteria for which they contain at least one outlier: green = 0, yellow = 1, orange = 2 and red = 3 or more. A red dot above a residue indicates a poor fit to the electron density ($RSRZ > 2$). Stretches of 2 or more consecutive residues without any outlier are shown as a green connector. Residues present in the sample, but not in the model, are shown in grey.

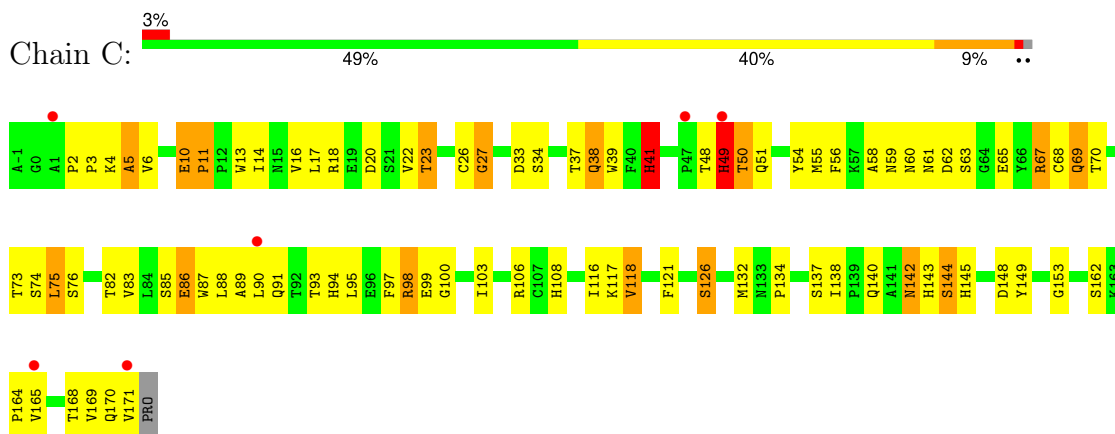
• Molecule 1: IgG1 Fc



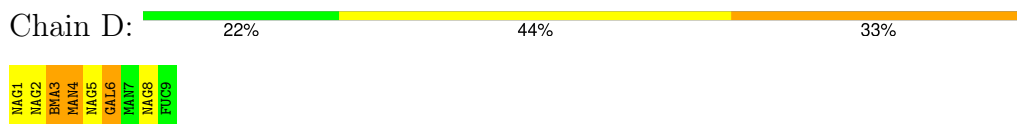
• Molecule 1: IgG1 Fc



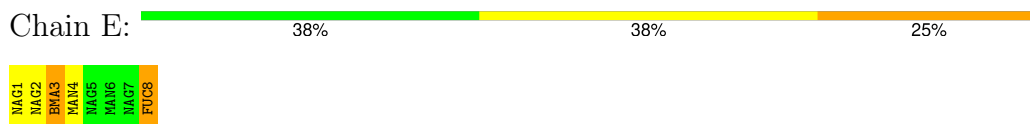
• Molecule 2: IgG receptor IIA (CD32A) P131 variant Fc fragment



- Molecule 3: beta-D-galactopyranose-(1-4)-2-acetamido-2-deoxy-beta-D-glucopyranose-(1-2)-alpha-D-mannopyranose-(1-6)-[2-acetamido-2-deoxy-beta-D-glucopyranose-(1-2)-alpha-D-mannopyranose-(1-3)]beta-D-mannopyranose-(1-4)-2-acetamido-2-deoxy-beta-D-glucopyranose-(1-4)-[alpha-L-fucopyranose-(1-6)]2-acetamido-2-deoxy-beta-D-glucopyranose



- Molecule 4: 2-acetamido-2-deoxy-beta-D-glucopyranose-(1-2)-alpha-D-mannopyranose-(1-3)-[2-acetamido-2-deoxy-beta-D-glucopyranose-(1-2)-alpha-D-mannopyranose-(1-6)]beta-D-mannopyranose-(1-4)-2-acetamido-2-deoxy-beta-D-glucopyranose-(1-4)-[alpha-L-fucopyranose-(1-6)]2-acetamido-2-deoxy-beta-D-glucopyranose



- Molecule 5: 2-acetamido-2-deoxy-beta-D-glucopyranose-(1-4)-[alpha-L-fucopyranose-(1-6)]2-acetamido-2-deoxy-beta-D-glucopyranose



4 Data and refinement statistics

Property	Value	Source
Space group	P 65 2 2	Depositor
Cell constants a, b, c, α , β , γ	127.53Å 127.53Å 256.14Å 90.00° 90.00° 120.00°	Depositor
Resolution (Å)	46.37 – 2.65 46.37 – 2.65	Depositor EDS
% Data completeness (in resolution range)	99.5 (46.37-2.65) 99.7 (46.37-2.65)	Depositor EDS
R_{merge}	0.12	Depositor
R_{sym}	(Not available)	Depositor
$\langle I/\sigma(I) \rangle$ ¹	1.51 (at 2.65Å)	Xtriage
Refinement program	PHENIX (1.20.1_4487: ???)	Depositor
R, R_{free}	0.277 , 0.327 0.281 , 0.330	Depositor DCC
R_{free} test set	1840 reflections (5.06%)	wwPDB-VP
Wilson B-factor (Å ²)	83.4	Xtriage
Anisotropy	0.461	Xtriage
Bulk solvent k_{sol} (e/Å ³), B_{sol} (Å ²)	0.27 , 98.7	EDS
L-test for twinning ²	$\langle L \rangle = 0.47$, $\langle L^2 \rangle = 0.30$	Xtriage
Estimated twinning fraction	No twinning to report.	Xtriage
F_o, F_c correlation	0.93	EDS
Total number of atoms	5058	wwPDB-VP
Average B, all atoms (Å ²)	153.0	wwPDB-VP

Xtriage's analysis on translational NCS is as follows: *The largest off-origin peak in the Patterson function is 3.38% of the height of the origin peak. No significant pseudotranslation is detected.*

¹Intensities estimated from amplitudes.

²Theoretical values of $\langle |L| \rangle$, $\langle L^2 \rangle$ for acentric reflections are 0.5, 0.333 respectively for untwinned datasets, and 0.375, 0.2 for perfectly twinned datasets.

5 Model quality [i](#)

5.1 Standard geometry [i](#)

Bond lengths and bond angles in the following residue types are not validated in this section: MAN, BMA, NAG, FUC, GAL

The Z score for a bond length (or angle) is the number of standard deviations the observed value is removed from the expected value. A bond length (or angle) with $|Z| > 5$ is considered an outlier worth inspection. RMSZ is the root-mean-square of all Z scores of the bond lengths (or angles).

Mol	Chain	Bond lengths		Bond angles	
		RMSZ	$\# Z > 5$	RMSZ	$\# Z > 5$
1	A	0.49	0/1756	0.81	0/2398
1	B	0.44	0/1748	0.84	2/2387 (0.1%)
2	C	0.59	0/1430	0.92	2/1952 (0.1%)
All	All	0.51	0/4934	0.85	4/6737 (0.1%)

There are no bond length outliers.

All (4) bond angle outliers are listed below:

Mol	Chain	Res	Type	Atoms	Z	Observed(°)	Ideal(°)
1	B	302	VAL	CA-C-N	-6.83	114.43	123.17
1	B	302	VAL	C-N-CA	-6.83	114.43	123.17
2	C	142	ASN	CB-CA-C	-5.42	100.34	109.83
2	C	11	PRO	N-CA-C	-5.07	104.51	110.70

There are no chirality outliers.

There are no planarity outliers.

5.2 Too-close contacts [i](#)

In the following table, the Non-H and H(model) columns list the number of non-hydrogen atoms and hydrogen atoms in the chain respectively. The H(added) column lists the number of hydrogen atoms added and optimized by MolProbity. The Clashes column lists the number of clashes within the asymmetric unit, whereas Symm-Clashes lists symmetry-related clashes.

Mol	Chain	Non-H	H(model)	H(added)	Clashes	Symm-Clashes
1	A	1708	0	1669	155	0
1	B	1701	0	1662	207	0
2	C	1386	0	1313	89	0
3	D	110	0	94	8	0

Continued on next page...

Continued from previous page...

Mol	Chain	Non-H	H(model)	H(added)	Clashes	Symm-Clashes
4	E	99	0	85	15	0
5	G	38	0	34	2	0
6	C	14	0	13	1	0
7	A	1	0	0	0	0
7	C	1	0	0	0	0
All	All	5058	0	4870	449	0

The all-atom clashscore is defined as the number of clashes found per 1000 atoms (including hydrogen atoms). The all-atom clashscore for this structure is 45.

The worst 5 of 449 close contacts within the same asymmetric unit are listed below, sorted by their clash magnitude.

Atom-1	Atom-2	Interatomic distance (Å)	Clash overlap (Å)
1:B:290:LYS:HD2	1:B:291:PRO:CD	1.68	1.24
1:B:290:LYS:HE2	1:B:303:VAL:CG1	1.70	1.20
1:B:290:LYS:CD	1:B:291:PRO:HD2	1.75	1.15
1:B:288:GLN:HB2	1:B:305:VAL:O	1.49	1.13
1:B:409:LYS:HE3	1:B:411:THR:HG21	1.27	1.13

There are no symmetry-related clashes.

5.3 Torsion angles [i](#)

5.3.1 Protein backbone [i](#)

In the following table, the Percentiles column shows the percent Ramachandran outliers of the chain as a percentile score with respect to all X-ray entries followed by that with respect to entries of similar resolution.

The Analysed column shows the number of residues for which the backbone conformation was analysed, and the total number of residues.

Mol	Chain	Analysed	Favoured	Allowed	Outliers	Percentiles	
1	A	213/224 (95%)	150 (70%)	44 (21%)	19 (9%)	0	0
1	B	212/224 (95%)	150 (71%)	40 (19%)	22 (10%)	0	0
2	C	174/174 (100%)	144 (83%)	19 (11%)	11 (6%)	1	1
All	All	599/622 (96%)	444 (74%)	103 (17%)	52 (9%)	0	0

5 of 52 Ramachandran outliers are listed below:

Mol	Chain	Res	Type
1	A	234	LEU
1	A	272	ASP
1	A	295	GLN
1	A	411	THR
1	A	413	ASP

5.3.2 Protein sidechains [i](#)

In the following table, the Percentiles column shows the percent sidechain outliers of the chain as a percentile score with respect to all X-ray entries followed by that with respect to entries of similar resolution.

The Analysed column shows the number of residues for which the sidechain conformation was analysed, and the total number of residues.

Mol	Chain	Analysed	Rotameric	Outliers	Percentiles	
1	A	200/208 (96%)	174 (87%)	26 (13%)	3	5
1	B	199/208 (96%)	183 (92%)	16 (8%)	10	16
2	C	157/155 (101%)	137 (87%)	20 (13%)	3	5
All	All	556/571 (97%)	494 (89%)	62 (11%)	5	8

5 of 62 residues with a non-rotameric sidechain are listed below:

Mol	Chain	Res	Type
1	B	288	GLN
2	C	75	LEU
1	B	368	LEU
2	C	68	CYS
2	C	126	SER

Sometimes sidechains can be flipped to improve hydrogen bonding and reduce clashes. 5 of 12 such sidechains are listed below:

Mol	Chain	Res	Type
1	B	418	GLN
2	C	15	ASN
2	C	108	HIS
2	C	69	GLN
1	A	438	GLN

5.3.3 RNA ⓘ

There are no RNA molecules in this entry.

5.4 Non-standard residues in protein, DNA, RNA chains ⓘ

There are no non-standard protein/DNA/RNA residues in this entry.

5.5 Carbohydrates ⓘ

20 monosaccharides are modelled in this entry.

In the following table, the Counts columns list the number of bonds (or angles) for which Mogul statistics could be retrieved, the number of bonds (or angles) that are observed in the model and the number of bonds (or angles) that are defined in the Chemical Component Dictionary. The Link column lists molecule types, if any, to which the group is linked. The Z score for a bond length (or angle) is the number of standard deviations the observed value is removed from the expected value. A bond length (or angle) with $|Z| > 2$ is considered an outlier worth inspection. RMSZ is the root-mean-square of all Z scores of the bond lengths (or angles).

Mol	Type	Chain	Res	Link	Bond lengths			Bond angles		
					Counts	RMSZ	$\# Z > 2$	Counts	RMSZ	$\# Z > 2$
3	NAG	D	1	3,1	14,14,15	0.45	0	17,19,21	0.51	0
3	NAG	D	2	3	14,14,15	0.71	1 (7%)	17,19,21	0.80	0
3	BMA	D	3	3	11,11,12	1.40	1 (9%)	15,15,17	1.23	3 (20%)
3	MAN	D	4	3	11,11,12	1.35	1 (9%)	15,15,17	0.90	1 (6%)
3	NAG	D	5	3	14,14,15	0.54	0	17,19,21	1.67	3 (17%)
3	GAL	D	6	3	11,11,12	0.90	1 (9%)	15,15,17	2.29	3 (20%)
3	MAN	D	7	3	11,11,12	0.25	0	15,15,17	0.49	0
3	NAG	D	8	3	14,14,15	0.29	0	17,19,21	0.55	0
3	FUC	D	9	3	10,10,11	0.76	0	14,14,16	0.84	0
4	NAG	E	1	1,4	14,14,15	0.44	0	17,19,21	0.50	0
4	NAG	E	2	4	14,14,15	0.54	0	17,19,21	0.74	0
4	BMA	E	3	4	11,11,12	1.01	1 (9%)	15,15,17	1.45	2 (13%)
4	MAN	E	4	4	11,11,12	1.20	2 (18%)	15,15,17	1.24	2 (13%)
4	NAG	E	5	4	14,14,15	0.22	0	17,19,21	0.31	0
4	MAN	E	6	4	11,11,12	0.82	0	15,15,17	0.90	0
4	NAG	E	7	4	14,14,15	0.40	0	17,19,21	0.40	0
4	FUC	E	8	4	10,10,11	0.82	1 (10%)	14,14,16	0.96	0
5	NAG	G	1	2,5	14,14,15	0.66	0	17,19,21	1.07	1 (5%)
5	NAG	G	2	5	14,14,15	0.49	0	17,19,21	0.64	1 (5%)
5	FUC	G	3	5	10,10,11	0.94	0	14,14,16	0.79	0

In the following table, the Chirals column lists the number of chiral outliers, the number of chiral centers analysed, the number of these observed in the model and the number defined in the Chemical Component Dictionary. Similar counts are reported in the Torsion and Rings columns. '-' means no outliers of that kind were identified.

Mol	Type	Chain	Res	Link	Chirals	Torsions	Rings
3	NAG	D	1	3,1	-	4/6/23/26	0/1/1/1
3	NAG	D	2	3	-	0/6/23/26	0/1/1/1
3	BMA	D	3	3	-	2/2/19/22	0/1/1/1
3	MAN	D	4	3	-	2/2/19/22	0/1/1/1
3	NAG	D	5	3	-	4/6/23/26	0/1/1/1
3	GAL	D	6	3	-	2/2/19/22	0/1/1/1
3	MAN	D	7	3	-	2/2/19/22	0/1/1/1
3	NAG	D	8	3	-	4/6/23/26	0/1/1/1
3	FUC	D	9	3	-	-	0/1/1/1
4	NAG	E	1	1,4	-	4/6/23/26	0/1/1/1
4	NAG	E	2	4	-	1/6/23/26	0/1/1/1
4	BMA	E	3	4	-	0/2/19/22	0/1/1/1
4	MAN	E	4	4	-	2/2/19/22	0/1/1/1
4	NAG	E	5	4	-	2/6/23/26	0/1/1/1
4	MAN	E	6	4	-	2/2/19/22	0/1/1/1
4	NAG	E	7	4	-	2/6/23/26	0/1/1/1
4	FUC	E	8	4	-	-	0/1/1/1
5	NAG	G	1	2,5	-	0/6/23/26	0/1/1/1
5	NAG	G	2	5	-	2/6/23/26	0/1/1/1
5	FUC	G	3	5	-	-	0/1/1/1

The worst 5 of 8 bond length outliers are listed below:

Mol	Chain	Res	Type	Atoms	Z	Observed(Å)	Ideal(Å)
4	E	4	MAN	O5-C1	-2.82	1.39	1.43
3	D	4	MAN	O5-C1	-2.69	1.39	1.43
4	E	3	BMA	O5-C1	-2.54	1.39	1.43
3	D	2	NAG	O5-C1	-2.47	1.39	1.43
3	D	3	BMA	O5-C5	2.45	1.48	1.43

The worst 5 of 16 bond angle outliers are listed below:

Mol	Chain	Res	Type	Atoms	Z	Observed(°)	Ideal(°)
3	D	6	GAL	C1-O5-C5	6.05	120.30	112.19
3	D	6	GAL	C1-C2-C3	4.61	116.36	109.64
3	D	5	NAG	C1-O5-C5	4.54	118.27	112.19

Continued on next page...

Continued from previous page...

Mol	Chain	Res	Type	Atoms	Z	Observed(°)	Ideal(°)
3	D	5	NAG	O4-C4-C5	3.35	117.57	109.32
4	E	3	BMA	C1-C2-C3	2.85	113.80	109.64

There are no chirality outliers.

5 of 35 torsion outliers are listed below:

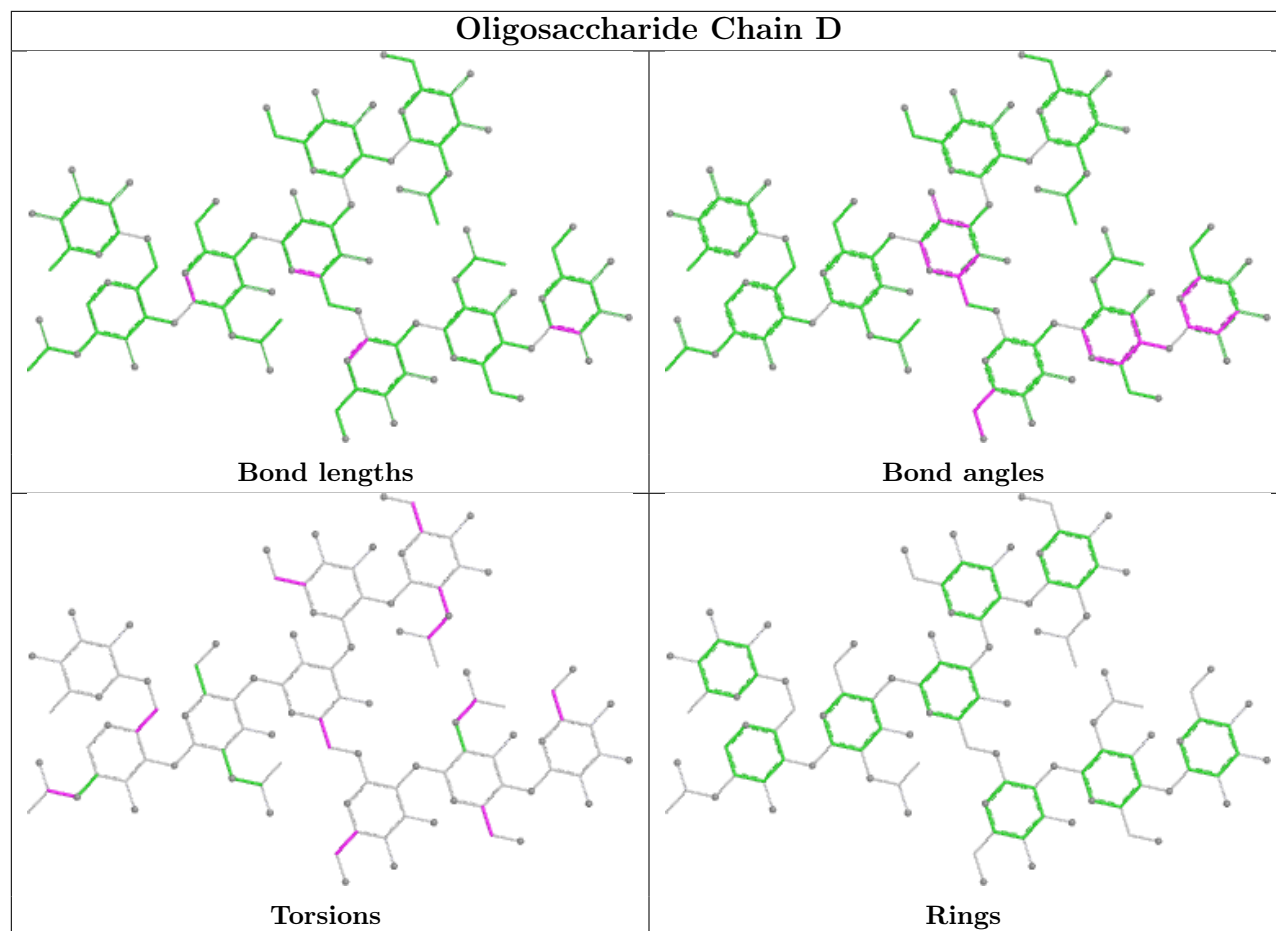
Mol	Chain	Res	Type	Atoms
5	G	2	NAG	O5-C5-C6-O6
3	D	4	MAN	O5-C5-C6-O6
3	D	7	MAN	O5-C5-C6-O6
3	D	4	MAN	C4-C5-C6-O6
4	E	5	NAG	O5-C5-C6-O6

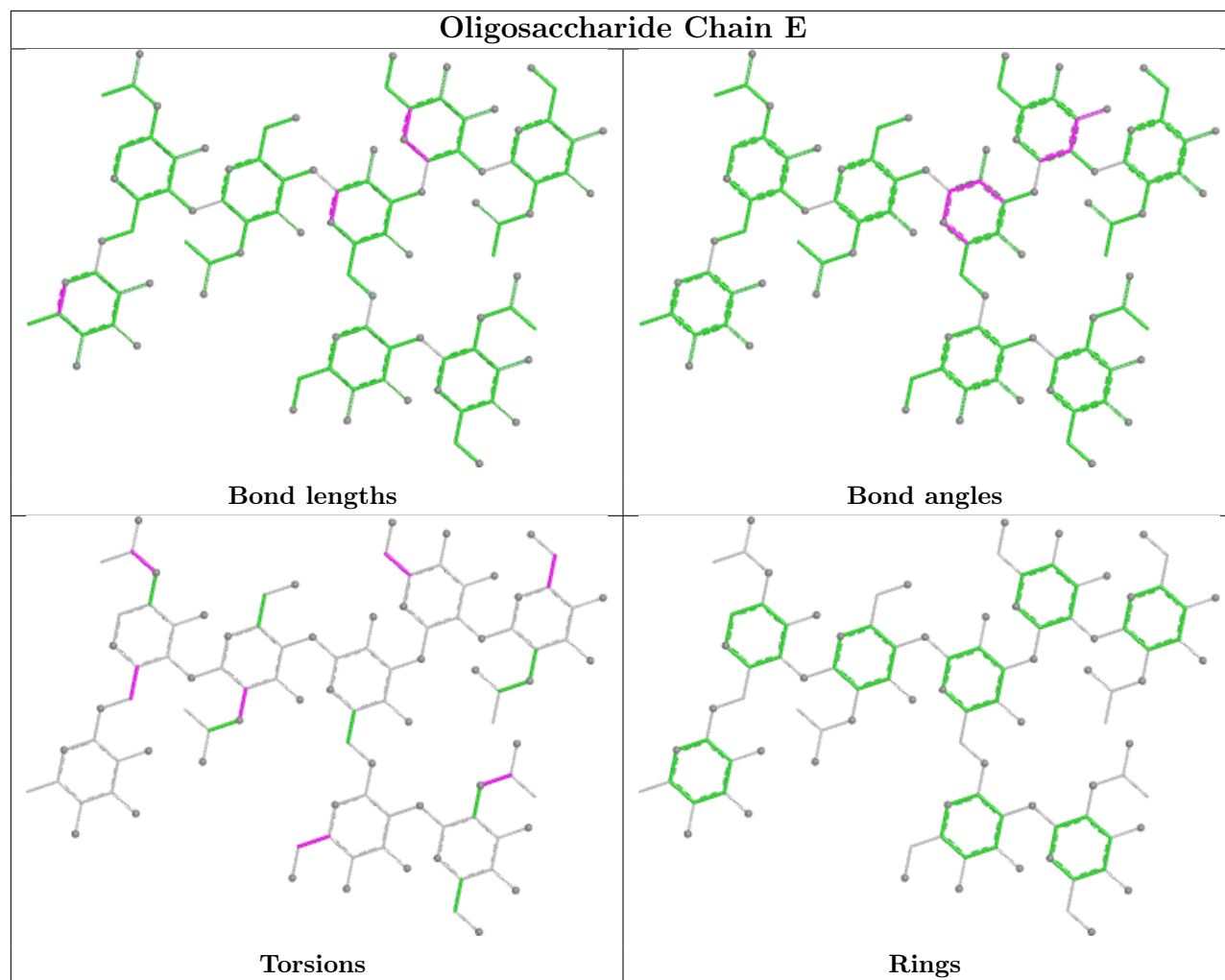
There are no ring outliers.

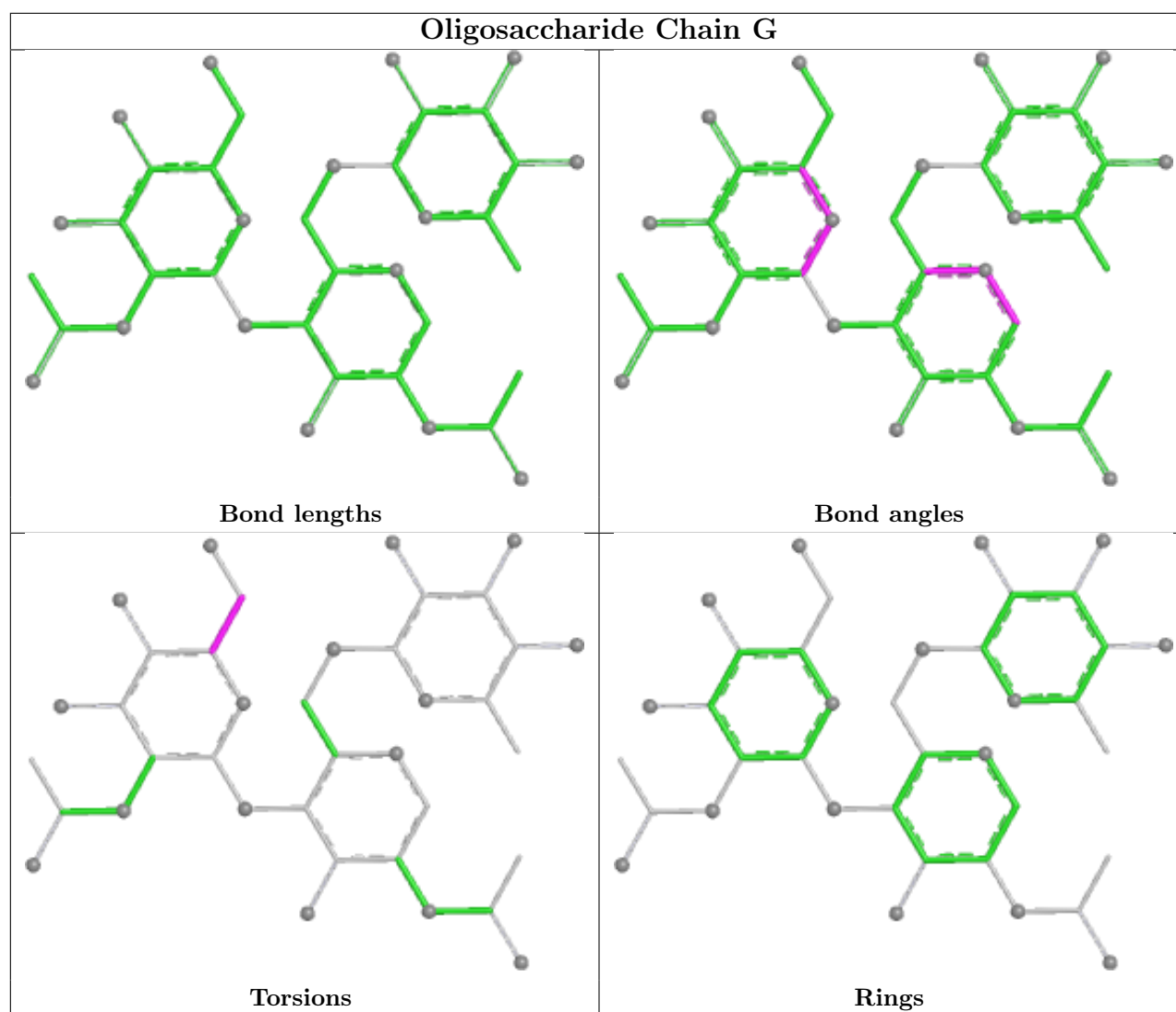
12 monomers are involved in 25 short contacts:

Mol	Chain	Res	Type	Clashes	Symm-Clashes
4	E	3	BMA	1	0
4	E	8	FUC	5	0
5	G	1	NAG	2	0
4	E	1	NAG	5	0
3	D	1	NAG	2	0
3	D	4	MAN	1	0
5	G	3	FUC	1	0
3	D	3	BMA	1	0
3	D	8	NAG	1	0
3	D	6	GAL	3	0
5	G	2	NAG	1	0
4	E	2	NAG	10	0

The following is a two-dimensional graphical depiction of Mogul quality analysis of bond lengths, bond angles, torsion angles, and ring geometry for oligosaccharide.







5.6 Ligand geometry [i](#)

1 ligand is modelled in this entry.

In the following table, the Counts columns list the number of bonds (or angles) for which Mogul statistics could be retrieved, the number of bonds (or angles) that are observed in the model and the number of bonds (or angles) that are defined in the Chemical Component Dictionary. The Link column lists molecule types, if any, to which the group is linked. The Z score for a bond length (or angle) is the number of standard deviations the observed value is removed from the expected value. A bond length (or angle) with $|Z| > 2$ is considered an outlier worth inspection. RMSZ is the root-mean-square of all Z scores of the bond lengths (or angles).

Mol	Type	Chain	Res	Link	Bond lengths			Bond angles		
					Counts	RMSZ	$\# Z > 2$	Counts	RMSZ	$\# Z > 2$
6	NAG	C	201	2	14,14,15	0.41	0	17,19,21	0.51	0

In the following table, the Chirals column lists the number of chiral outliers, the number of chiral

centers analysed, the number of these observed in the model and the number defined in the Chemical Component Dictionary. Similar counts are reported in the Torsion and Rings columns. '-' means no outliers of that kind were identified.

Mol	Type	Chain	Res	Link	Chirals	Torsions	Rings
6	NAG	C	201	2	-	4/6/23/26	0/1/1/1

There are no bond length outliers.

There are no bond angle outliers.

There are no chirality outliers.

All (4) torsion outliers are listed below:

Mol	Chain	Res	Type	Atoms
6	C	201	NAG	O5-C5-C6-O6
6	C	201	NAG	C4-C5-C6-O6
6	C	201	NAG	C8-C7-N2-C2
6	C	201	NAG	O7-C7-N2-C2

There are no ring outliers.

1 monomer is involved in 1 short contact:

Mol	Chain	Res	Type	Clashes	Symm-Clashes
6	C	201	NAG	1	0

5.7 Other polymers [i](#)

There are no such residues in this entry.

5.8 Polymer linkage issues [i](#)

There are no chain breaks in this entry.

6 Fit of model and data [i](#)

6.1 Protein, DNA and RNA chains [i](#)

In the following table, the column labelled ‘#RSRZ> 2’ contains the number (and percentage) of RSRZ outliers, followed by percent RSRZ outliers for the chain as percentile scores relative to all X-ray entries and entries of similar resolution. The OWAB column contains the minimum, median, 95th percentile and maximum values of the occupancy-weighted average B-factor per residue. The column labelled ‘Q< 0.9’ lists the number of (and percentage) of residues with an average occupancy less than 0.9.

Mol	Chain	Analysed	<RSRZ>	#RSRZ>2	OWAB(Å ²)	Q<0.9
1	A	215/224 (95%)	0.97	41 (19%) 4 4	58, 136, 256, 303	0
1	B	214/224 (95%)	1.26	52 (24%) 2 2	101, 194, 295, 336	0
2	C	173/174 (99%)	0.42	6 (3%) 47 44	46, 93, 159, 198	3 (1%)
All	All	602/622 (96%)	0.92	99 (16%) 5 5	46, 141, 271, 336	3 (0%)

The worst 5 of 99 RSRZ outliers are listed below:

Mol	Chain	Res	Type	RSRZ
1	B	426	SER	8.9
1	B	427	VAL	8.1
1	B	378	VAL	7.6
1	B	425	CYS	7.2
1	B	379	VAL	6.6

6.2 Non-standard residues in protein, DNA, RNA chains [i](#)

There are no non-standard protein/DNA/RNA residues in this entry.

6.3 Carbohydrates [i](#)

In the following table, the Atoms column lists the number of modelled atoms in the group and the number defined in the chemical component dictionary. The B-factors column lists the minimum, median, 95th percentile and maximum values of B factors of atoms in the group. The column labelled ‘Q< 0.9’ lists the number of atoms with occupancy less than 0.9.

Mol	Type	Chain	Res	Atoms	RSCC	RSR	B-factors(Å ²)	Q<0.9
4	FUC	E	8	10/11	0.61	0.15	176,177,190,194	0
4	NAG	E	1	14/15	0.66	0.17	150,169,185,205	0
4	NAG	E	5	14/15	0.69	0.15	184,194,214,224	0

Continued on next page...

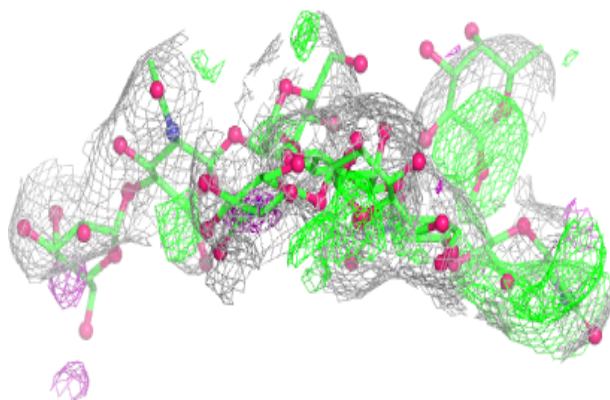
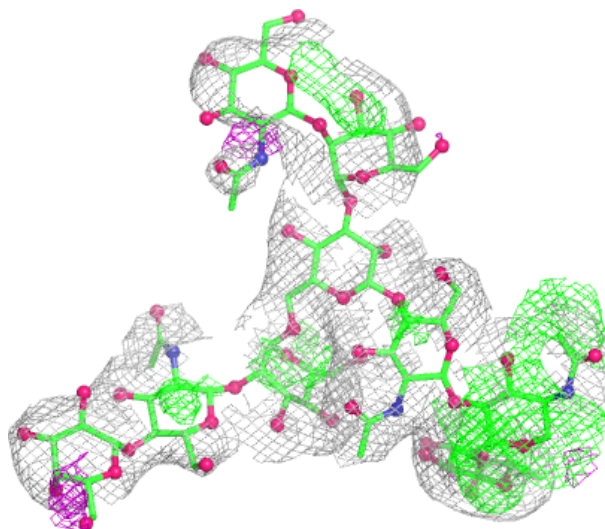
Continued from previous page...

Mol	Type	Chain	Res	Atoms	RSCC	RSR	B-factors(\AA^2)	Q<0.9
3	FUC	D	9	10/11	0.72	0.23	108,127,170,177	0
3	NAG	D	8	14/15	0.72	0.21	174,197,229,241	0
4	NAG	E	7	14/15	0.73	0.18	144,152,161,162	0
3	NAG	D	1	14/15	0.75	0.22	88,106,118,149	0
4	MAN	E	4	11/12	0.76	0.21	168,197,230,258	0
4	MAN	E	6	11/12	0.78	0.10	161,166,185,190	0
3	MAN	D	7	11/12	0.85	0.20	139,156,184,184	0
3	GAL	D	6	11/12	0.86	0.28	131,177,243,292	0
3	NAG	D	5	14/15	0.86	0.15	108,144,165,175	0
4	BMA	E	3	11/12	0.90	0.09	139,151,163,166	0
4	NAG	E	2	14/15	0.90	0.10	136,151,164,169	0
3	MAN	D	4	11/12	0.91	0.13	87,98,124,147	0
3	BMA	D	3	11/12	0.93	0.09	99,108,111,116	0
3	NAG	D	2	14/15	0.95	0.10	74,98,107,115	0
5	NAG	G	1	14/15	-	-	169,215,253,269	0
5	NAG	G	2	14/15	-	-	226,268,308,315	0
5	FUC	G	3	10/11	-	-	286,301,317,328	0

The following is a graphical depiction of the model fit to experimental electron density for oligosaccharide. Each fit is shown from different orientation to approximate a three-dimensional view.

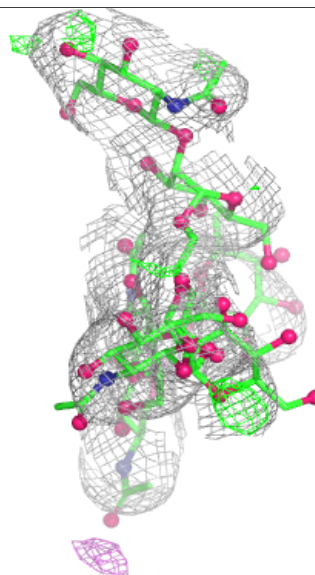
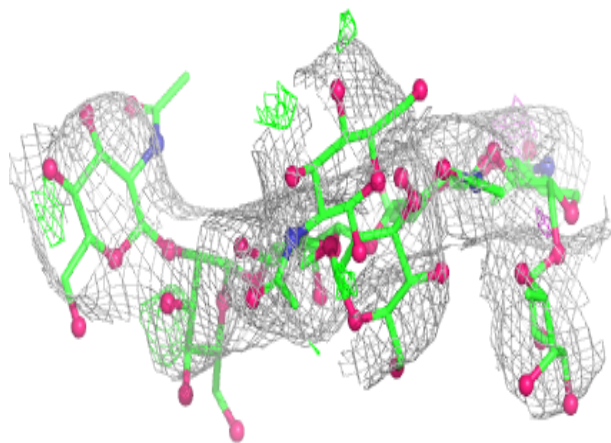
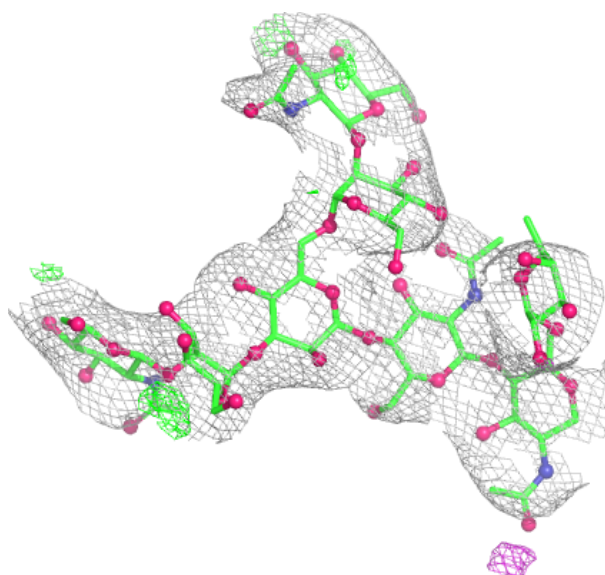
Electron density around Chain D:

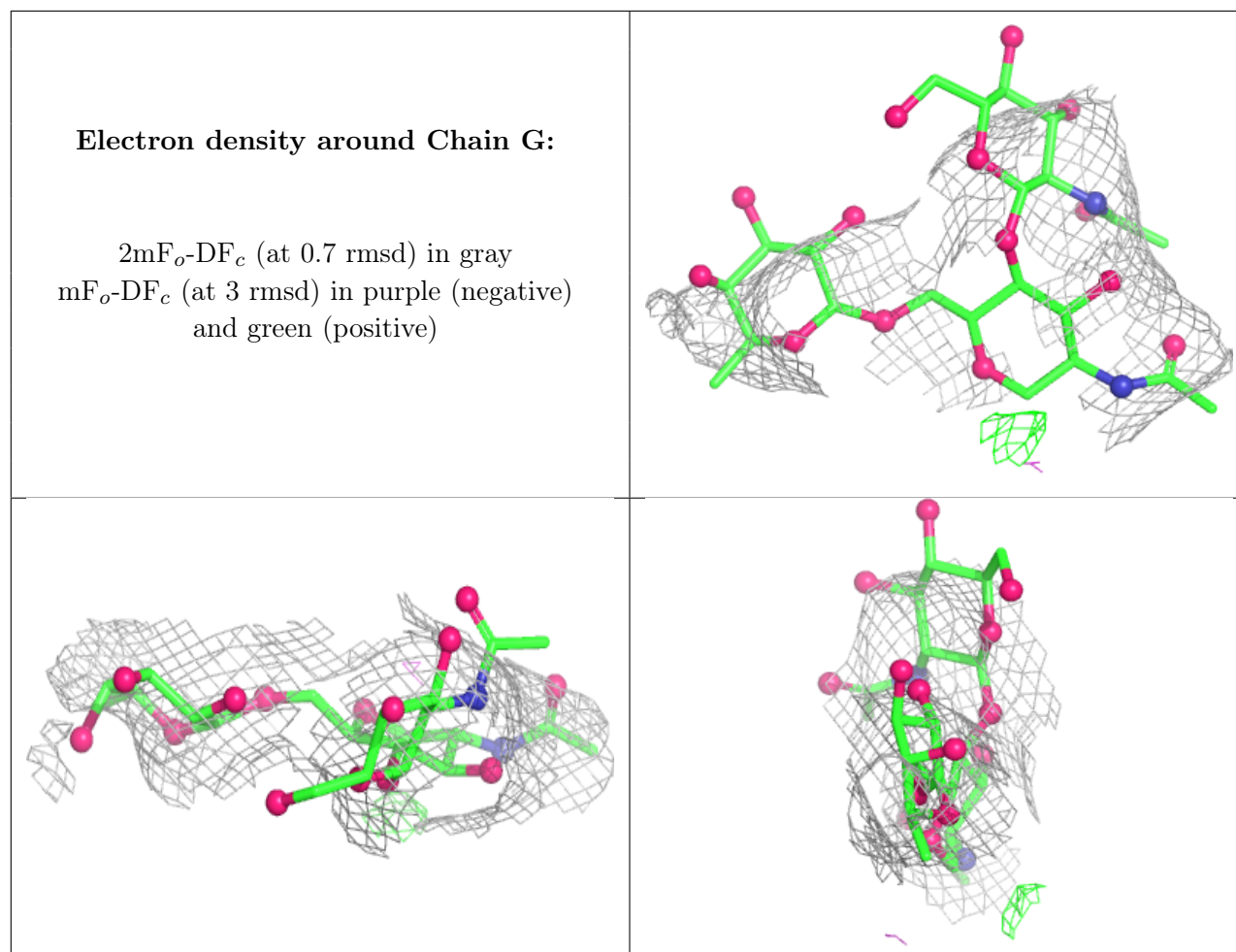
$2mF_o-DF_c$ (at 0.7 rmsd) in gray
 mF_o-DF_c (at 3 rmsd) in purple (negative)
and green (positive)



Electron density around Chain E:

$2mF_o-DF_c$ (at 0.7 rmsd) in gray
 mF_o-DF_c (at 3 rmsd) in purple (negative)
and green (positive)





6.4 Ligands [i](#)

In the following table, the Atoms column lists the number of modelled atoms in the group and the number defined in the chemical component dictionary. The B-factors column lists the minimum, median, 95th percentile and maximum values of B factors of atoms in the group. The column labelled 'Q < 0.9' lists the number of atoms with occupancy less than 0.9.

Mol	Type	Chain	Res	Atoms	RSCC	RSR	B-factors(\AA^2)	Q<0.9
6	NAG	C	201	14/15	0.59	0.12	185,210,223,223	0

6.5 Other polymers [i](#)

There are no such residues in this entry.