



# Full wwPDB X-ray Structure Validation Report ⓘ

May 5, 2025 – 09:04 PM EDT

PDB ID : 9C4T / pdb\_00009c4t  
Title : menin mutant M327I in complex with MLL peptide  
Authors : Clegg, B.D.; Cierpicki, T.; Grembecka, J.  
Deposited on : 2024-06-05  
Resolution : 1.46 Å(reported)

This is a Full wwPDB X-ray Structure Validation Report for a publicly released PDB entry.

We welcome your comments at [validation@mail.wwpdb.org](mailto:validation@mail.wwpdb.org)

A user guide is available at

<https://www.wwpdb.org/validation/2017/XrayValidationReportHelp>

with specific help available everywhere you see the ⓘ symbol.

The types of validation reports are described at

<http://www.wwpdb.org/validation/2017/FAQs#types>.

---

The following versions of software and data (see [references ⓘ](#)) were used in the production of this report:

MolProbity : 4-5-2 with Phenix2.0rc1  
Mogul : 2022.3.0, CSD as543be (2022)  
Xtriage (Phenix) : 2.0rc1  
EDS : 3.0  
Percentile statistics : 20231227.v01 (using entries in the PDB archive December 27th 2023)  
CCP4 : 9.0.006 (Gargrove)  
Density-Fitness : 1.0.12  
Ideal geometry (proteins) : Engh & Huber (2001)  
Ideal geometry (DNA, RNA) : Parkinson et al. (1996)  
Validation Pipeline (wwPDB-VP) : 2.43.1

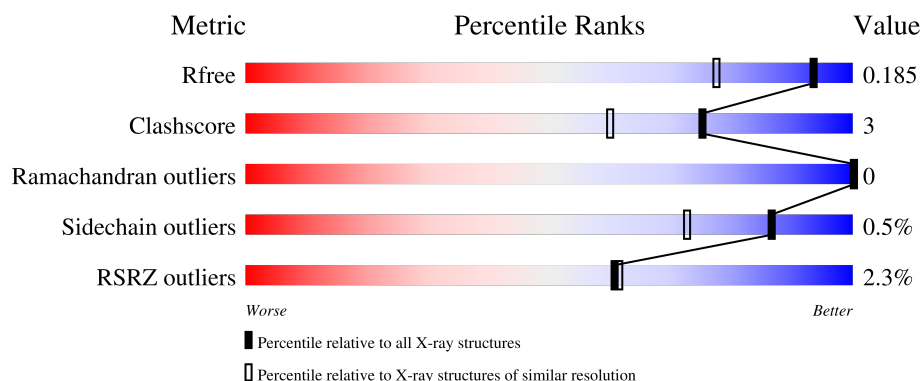
# 1 Overall quality at a glance

The following experimental techniques were used to determine the structure:

*X-RAY DIFFRACTION*



The reported resolution of this entry is 1.46 Å.

Percentile scores (ranging between 0-100) for global validation metrics of the entry are shown in the following graphic. The table shows the number of entries on which the scores are based.



Metric	Whole archive (#Entries)	Similar resolution (#Entries, resolution range(Å))
$R_{free}$	164625	1556 (1.46-1.46)
Clashscore	180529	1653 (1.46-1.46)
Ramachandran outliers	177936	1635 (1.46-1.46)
Sidechain outliers	177891	1635 (1.46-1.46)
RSRZ outliers	164620	1556 (1.46-1.46)

The table below summarises the geometric issues observed across the polymeric chains and their fit to the electron density. The red, orange, yellow and green segments of the lower bar indicate the fraction of residues that contain outliers for  $\geq 3$ , 2, 1 and 0 types of geometric quality criteria respectively. A grey segment represents the fraction of residues that are not modelled. The numeric value for each fraction is indicated below the corresponding segment, with a dot representing fractions  $\leq 5\%$ . The upper red bar (where present) indicates the fraction of residues that have poor fit to the electron density. The numeric value is given above the bar.

Mol	Chain	Length	Quality of chain
1	A	489	 2% 88% 7% . .
2	B	13	 62% 15% 23%

## 2 Entry composition

There are 7 unique types of molecules in this entry. The entry contains 8429 atoms, of which 3939 are hydrogens and 0 are deuteriums.

In the tables below, the ZeroOcc column contains the number of atoms modelled with zero occupancy, the AltConf column contains the number of residues with at least one atom in alternate conformation and the Trace column contains the number of residues modelled with at most 2 atoms.

- Molecule 1 is a protein called Menin.

Mol	Chain	Residues	Atoms						ZeroOcc	AltConf	Trace
1	A	469	Total	C	H	N	O	S	127	43	0
			7672	2453	3828	657	720	14			

There are 39 discrepancies between the modelled and reference sequences:

Chain	Residue	Modelled	Actual	Comment	Reference
A	-4	GLY	-	expression tag	UNP O00255
A	-3	GLY	-	expression tag	UNP O00255
A	-2	SER	-	expression tag	UNP O00255
A	-1	SER	-	expression tag	UNP O00255
A	0	SER	-	expression tag	UNP O00255
A	?	-	ILE	deletion	UNP O00255
A	?	-	PRO	deletion	UNP O00255
A	?	-	THR	deletion	UNP O00255
A	?	-	ASN	deletion	UNP O00255
A	?	-	VAL	deletion	UNP O00255
A	?	-	PRO	deletion	UNP O00255
A	?	-	GLU	deletion	UNP O00255
A	?	-	LEU	deletion	UNP O00255
A	?	-	THR	deletion	UNP O00255
A	?	-	PHE	deletion	UNP O00255
A	?	-	GLN	deletion	UNP O00255
A	?	-	PRO	deletion	UNP O00255
A	?	-	SER	deletion	UNP O00255
A	?	-	PRO	deletion	UNP O00255
A	?	-	ALA	deletion	UNP O00255
A	?	-	PRO	deletion	UNP O00255
A	?	-	ASP	deletion	UNP O00255
A	?	-	PRO	deletion	UNP O00255
A	?	-	PRO	deletion	UNP O00255
A	?	-	GLY	deletion	UNP O00255
A	322	ILE	MET	engineered mutation	UNP O00255
A	?	-	GLU	deletion	UNP O00255

*Continued on next page...*

Continued from previous page...

Chain	Residue	Modelled	Actual	Comment	Reference
A	?	-	GLU	deletion	UNP O00255
A	?	-	ARG	deletion	UNP O00255
A	?	-	PRO	deletion	UNP O00255
A	?	-	GLY	deletion	UNP O00255
A	?	-	GLU	deletion	UNP O00255
A	?	-	GLN	deletion	UNP O00255
A	?	-	SER	deletion	UNP O00255
A	?	-	GLN	deletion	UNP O00255
A	?	-	GLY	deletion	UNP O00255
A	?	-	THR	deletion	UNP O00255
A	?	-	GLN	deletion	UNP O00255
A	541	ALA	THR	variant	UNP O00255

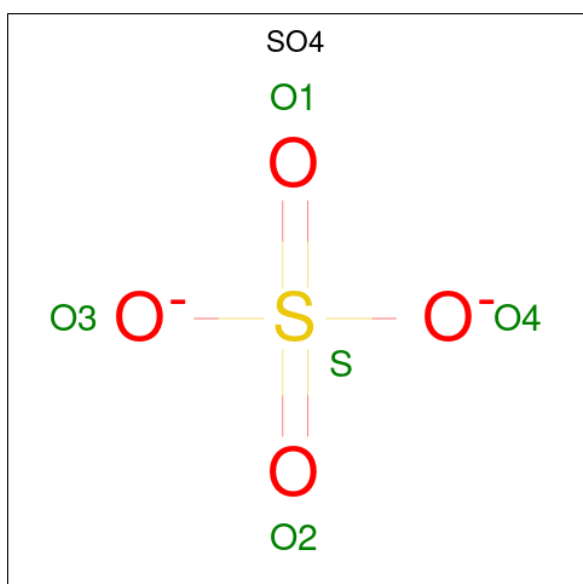
- Molecule 2 is a protein called Histone-lysine N-methyltransferase 2A.

Mol	Chain	Residues	Atoms					ZeroOcc	AltConf	Trace
2	B	10	Total	C	H	N	O	1	0	1
			153	51	75	17	10			

There are 2 discrepancies between the modelled and reference sequences:

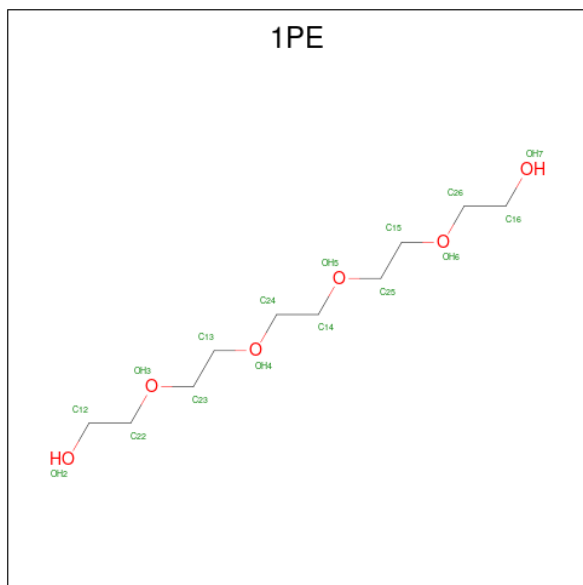
Chain	Residue	Modelled	Actual	Comment	Reference
B	5	ALA	CYS	engineered mutation	UNP Q03164
B	16	NH2	-	amidation	UNP Q03164

- Molecule 3 is SULFATE ION (CCD ID: SO4) (formula: O<sub>4</sub>S).



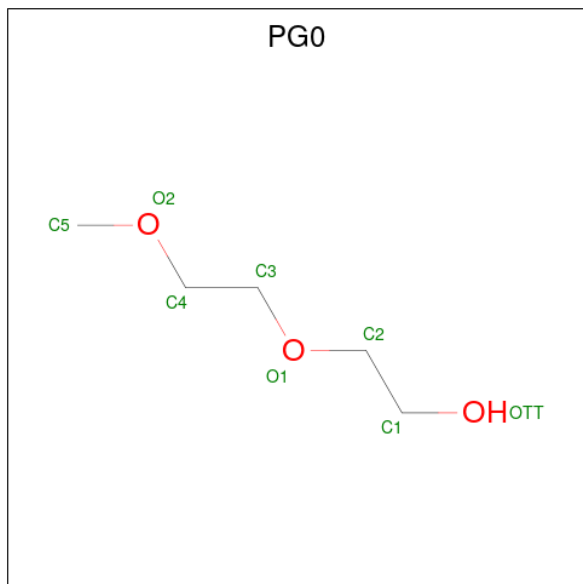
Mol	Chain	Residues	Atoms			ZeroOcc	AltConf
3	A	1	Total	O	S	0	0
			5	4	1		
3	A	1	Total	O	S	0	0
			5	4	1		

- Molecule 4 is PENTAETHYLENE GLYCOL (CCD ID: 1PE) (formula:  $C_{10}H_{22}O_6$ ).



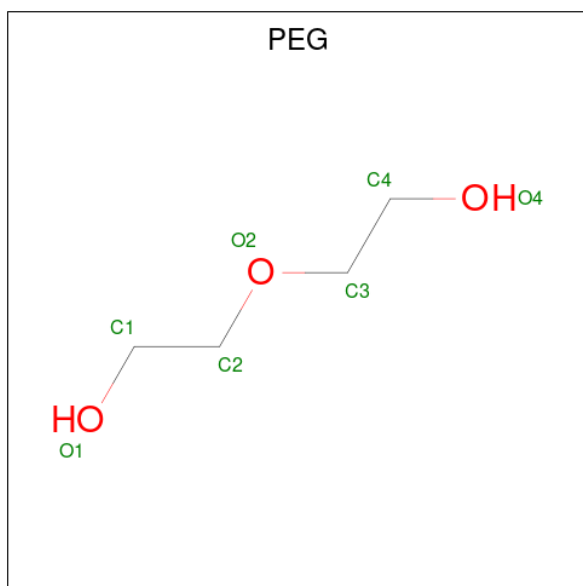
Mol	Chain	Residues	Atoms				ZeroOcc	AltConf
4	A	1	Total	C	H	O	3	0
			26	7	15	4		

- Molecule 5 is 2-(2-METHOXYETHOXY)ETHANOL (CCD ID: PG0) (formula:  $C_5H_{12}O_3$ ).



Mol	Chain	Residues	Atoms				ZeroOcc	AltConf
5	A	1	Total	C	H	O	3	0
			19	5	11	3		

- Molecule 6 is DI(HYDROXYETHYL)ETHER (CCD ID: PEG) (formula:  $C_4H_{10}O_3$ ).



Mol	Chain	Residues	Atoms				ZeroOcc	AltConf
6	A	1	Total	C	H	O	2	0
			17	4	10	3		

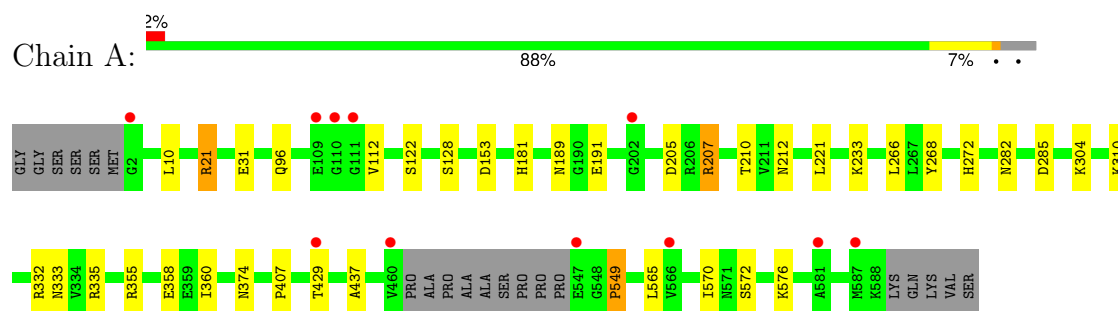
- Molecule 7 is water.

Mol	Chain	Residues	Atoms		ZeroOcc	AltConf
7	A	526	Total	O	0	0
			526	526		
7	B	6	Total	O	0	0
			6	6		

### 3 Residue-property plots [i](#)

These plots are drawn for all protein, RNA, DNA and oligosaccharide chains in the entry. The first graphic for a chain summarises the proportions of the various outlier classes displayed in the second graphic. The second graphic shows the sequence view annotated by issues in geometry and electron density. Residues are color-coded according to the number of geometric quality criteria for which they contain at least one outlier: green = 0, yellow = 1, orange = 2 and red = 3 or more. A red dot above a residue indicates a poor fit to the electron density ( $RSRZ > 2$ ). Stretches of 2 or more consecutive residues without any outlier are shown as a green connector. Residues present in the sample, but not in the model, are shown in grey.

- Molecule 1: Menin



- Molecule 2: Histone-lysine N-methyltransferase 2A



## 4 Data and refinement statistics

Property	Value	Source
Space group	P 21 21 21	Depositor
Cell constants a, b, c, $\alpha$ , $\beta$ , $\gamma$	49.08Å 80.46Å 124.95Å 90.00° 90.00° 90.00°	Depositor
Resolution (Å)	31.13 – 1.46 31.13 – 1.46	Depositor EDS
% Data completeness (in resolution range)	99.5 (31.13-1.46) 99.5 (31.13-1.46)	Depositor EDS
$R_{merge}$	0.08	Depositor
$R_{sym}$	(Not available)	Depositor
$\langle I/\sigma(I) \rangle$ <sup>1</sup>	2.19 (at 1.46Å)	Xtriage
Refinement program	REFMAC 5.8.0425	Depositor
R, $R_{free}$	0.156 , 0.184 0.157 , 0.185	Depositor DCC
$R_{free}$ test set	4394 reflections (5.08%)	wwPDB-VP
Wilson B-factor (Å <sup>2</sup> )	14.3	Xtriage
Anisotropy	0.078	Xtriage
Bulk solvent $k_{sol}$ (e/Å <sup>3</sup> ), $B_{sol}$ (Å <sup>2</sup> )	0.42 , 41.0	EDS
L-test for twinning <sup>2</sup>	$\langle  L  \rangle = 0.50$ , $\langle L^2 \rangle = 0.33$	Xtriage
Estimated twinning fraction	No twinning to report.	Xtriage
$F_o, F_c$ correlation	0.97	EDS
Total number of atoms	8429	wwPDB-VP
Average B, all atoms (Å <sup>2</sup> )	17.0	wwPDB-VP

Xtriage's analysis on translational NCS is as follows: *The largest off-origin peak in the Patterson function is 6.98% of the height of the origin peak. No significant pseudotranslation is detected.*

<sup>1</sup>Intensities estimated from amplitudes.

<sup>2</sup>Theoretical values of  $\langle |L| \rangle$ ,  $\langle L^2 \rangle$  for acentric reflections are 0.5, 0.333 respectively for untwinned datasets, and 0.375, 0.2 for perfectly twinned datasets.



## 5 Model quality

### 5.1 Standard geometry

Bond lengths and bond angles in the following residue types are not validated in this section: SO4, NH2, 1PE, PEG, PG0

The Z score for a bond length (or angle) is the number of standard deviations the observed value is removed from the expected value. A bond length (or angle) with  $|Z| > 5$  is considered an outlier worth inspection. RMSZ is the root-mean-square of all Z scores of the bond lengths (or angles).

Mol	Chain	Bond lengths		Bond angles	
		RMSZ	# Z  >5	RMSZ	# Z  >5
1	A	0.73	0/4113	1.14	10/5584 (0.2%)
2	B	1.14	1/81 (1.2%)	1.50	1/110 (0.9%)
All	All	0.74	1/4194 (0.0%)	1.15	11/5694 (0.2%)

Chiral center outliers are detected by calculating the chiral volume of a chiral center and verifying if the center is modelled as a planar moiety or with the opposite hand. A planarity outlier is detected by checking planarity of atoms in a peptide group, atoms in a mainchain group or atoms of a sidechain that are expected to be planar.

Mol	Chain	#Chirality outliers	#Planarity outliers
1	A	0	2
2	B	0	2
All	All	0	4

All (1) bond length outliers are listed below:

Mol	Chain	Res	Type	Atoms	Z	Observed(Å)	Ideal(Å)
2	B	14	GLY	C-N	7.75	1.44	1.33

All (11) bond angle outliers are listed below:

Mol	Chain	Res	Type	Atoms	Z	Observed(°)	Ideal(°)
1	A	285	ASP	CA-CB-CG	6.80	119.40	112.60
1	A	282	ASN	CA-CB-CG	6.26	118.86	112.60
1	A	549	PRO	N-CA-CB	6.07	108.98	103.34
1	A	207	ARG	NE-CZ-NH2	-5.92	113.87	119.20
1	A	21	ARG	CD-NE-CZ	5.86	132.61	124.40
2	B	8	ARG	CB-CA-C	5.82	120.35	109.71
1	A	153	ASP	CA-CB-CG	5.74	118.34	112.60
1	A	335	ARG	CD-NE-CZ	5.71	132.40	124.40

*Continued on next page...*

*Continued from previous page...*

Mol	Chain	Res	Type	Atoms	Z	Observed(°)	Ideal(°)
1	A	31	GLU	CB-CA-C	-5.58	101.65	110.02
1	A	205	ASP	CA-CB-CG	5.50	118.10	112.60
1	A	565	LEU	CA-C-O	-5.38	112.22	119.11

There are no chirality outliers.

All (4) planarity outliers are listed below:

Mol	Chain	Res	Type	Group
1	A	207	ARG	Sidechain
1	A	21	ARG	Sidechain
2	B	14	GLY	Mainchain
2	B	8	ARG	Sidechain

## 5.2 Too-close contacts ⓘ

In the following table, the Non-H and H(model) columns list the number of non-hydrogen atoms and hydrogen atoms in the chain respectively. The H(added) column lists the number of hydrogen atoms added and optimized by MolProbity. The Clashes column lists the number of clashes within the asymmetric unit, whereas Symm-Clashes lists symmetry-related clashes.

Mol	Chain	Non-H	H(model)	H(added)	Clashes	Symm-Clashes
1	A	3844	3828	3586	22	0
2	B	78	75	73	0	0
3	A	10	0	0	0	0
4	A	11	15	13	0	0
5	A	8	11	12	0	0
6	A	7	10	10	2	0
7	A	526	0	0	9	0
7	B	6	0	0	0	0
All	All	4490	3939	3694	23	0

The all-atom clashscore is defined as the number of clashes found per 1000 atoms (including hydrogen atoms). The all-atom clashscore for this structure is 3.

All (23) close contacts within the same asymmetric unit are listed below, sorted by their clash magnitude.

Atom-1	Atom-2	Interatomic distance (Å)	Clash overlap (Å)
1:A:210[B]:THR:HG22	7:A:1065:HOH:O	1.61	1.00
6:A:605:PEG:H22	7:A:1107:HOH:O	1.81	0.79

*Continued on next page...*

Continued from previous page...

Atom-1	Atom-2	Interatomic distance (Å)	Clash overlap (Å)
1:A:355:ARG:O	1:A:358:GLU:OE1	2.06	0.73
1:A:374[A]:ASN:CG	7:A:705:HOH:O	2.30	0.72
1:A:374[A]:ASN:ND2	7:A:705:HOH:O	2.28	0.67
1:A:332:ARG:NE	7:A:708:HOH:O	2.33	0.61
1:A:266[A]:LEU:HD12	7:A:1078:HOH:O	2.00	0.60
1:A:96[A]:GLN:HG2	1:A:96[A]:GLN:O	2.04	0.56
1:A:210[B]:THR:HG23	1:A:212:ASN:H	1.72	0.52
1:A:437:ALA:HB1	1:A:576:LYS:HG2	1.93	0.51
1:A:572[B]:SER:O	1:A:576:LYS:HG3	2.11	0.51
1:A:189:ASN:HB2	1:A:191[A]:GLU:HG3	1.94	0.50
1:A:570:ILE:HG12	7:A:1072:HOH:O	2.11	0.50
1:A:122:SER:OG	7:A:701:HOH:O	2.19	0.47
1:A:407:PRO:HB2	1:A:549:PRO:HG2	1.96	0.47
1:A:181:HIS:HB2	1:A:221:LEU:HD11	1.99	0.45
1:A:96[A]:GLN:NE2	1:A:128:SER:OG	2.50	0.45
1:A:333[B]:ASN:OD1	1:A:333[B]:ASN:C	2.61	0.43
1:A:233:LYS:HG3	1:A:272:HIS:CE1	2.54	0.42
1:A:310:LYS:CE	6:A:605:PEG:H41	2.50	0.42
1:A:268:TYR:OH	1:A:304:LYS:HE3	2.20	0.41
1:A:360:ILE:HD12	1:A:360:ILE:HA	1.98	0.41
1:A:10:LEU:HB2	7:A:788:HOH:O	2.20	0.40

There are no symmetry-related clashes.

## 5.3 Torsion angles ⓘ

### 5.3.1 Protein backbone ⓘ

In the following table, the Percentiles column shows the percent Ramachandran outliers of the chain as a percentile score with respect to all X-ray entries followed by that with respect to entries of similar resolution.

The Analysed column shows the number of residues for which the backbone conformation was analysed, and the total number of residues.

Mol	Chain	Analysed	Favoured	Allowed	Outliers	Percentiles	
1	A	508/489 (104%)	495 (97%)	13 (3%)	0	100	100
2	B	8/13 (62%)	8 (100%)	0	0	100	100
All	All	516/502 (103%)	503 (98%)	13 (2%)	0	100	100

There are no Ramachandran outliers to report.

### 5.3.2 Protein sidechains ⓘ

In the following table, the Percentiles column shows the percent sidechain outliers of the chain as a percentile score with respect to all X-ray entries followed by that with respect to entries of similar resolution.

The Analysed column shows the number of residues for which the sidechain conformation was analysed, and the total number of residues.

Mol	Chain	Analysed	Rotameric	Outliers	Percentiles	
1	A	425/410 (104%)	423 (100%)	2 (0%)	86	73
2	B	7/9 (78%)	7 (100%)	0	100	100
All	All	432/419 (103%)	430 (100%)	2 (0%)	86	73

All (2) residues with a non-rotameric sidechain are listed below:

Mol	Chain	Res	Type
1	A	112	VAL
1	A	429	THR

Sometimes sidechains can be flipped to improve hydrogen bonding and reduce clashes. All (2) such sidechains are listed below:

Mol	Chain	Res	Type
1	A	189	ASN
1	A	260	GLN

### 5.3.3 RNA ⓘ

There are no RNA molecules in this entry.

## 5.4 Non-standard residues in protein, DNA, RNA chains ⓘ

There are no non-standard protein/DNA/RNA residues in this entry.

## 5.5 Carbohydrates ⓘ

There are no oligosaccharides in this entry.

## 5.6 Ligand geometry

5 ligands are modelled in this entry.

In the following table, the Counts columns list the number of bonds (or angles) for which Mogul statistics could be retrieved, the number of bonds (or angles) that are observed in the model and the number of bonds (or angles) that are defined in the Chemical Component Dictionary. The Link column lists molecule types, if any, to which the group is linked. The Z score for a bond length (or angle) is the number of standard deviations the observed value is removed from the expected value. A bond length (or angle) with  $|Z| > 2$  is considered an outlier worth inspection. RMSZ is the root-mean-square of all Z scores of the bond lengths (or angles).

Mol	Type	Chain	Res	Link	Bond lengths			Bond angles		
					Counts	RMSZ	$\# Z  > 2$	Counts	RMSZ	$\# Z  > 2$
3	SO4	A	601	-	4,4,4	0.30	0	6,6,6	0.09	0
4	1PE	A	603	-	10,10,15	0.35	0	9,9,14	0.22	0
5	PG0	A	604	-	7,7,7	0.17	0	6,6,6	0.17	0
3	SO4	A	602	-	4,4,4	0.56	0	6,6,6	0.45	0
6	PEG	A	605	-	6,6,6	1.06	0	5,5,5	0.79	0

In the following table, the Chirals column lists the number of chiral outliers, the number of chiral centers analysed, the number of these observed in the model and the number defined in the Chemical Component Dictionary. Similar counts are reported in the Torsion and Rings columns. '-' means no outliers of that kind were identified.

Mol	Type	Chain	Res	Link	Chirals	Torsions	Rings
5	PG0	A	604	-	-	2/5/5/5	-
6	PEG	A	605	-	-	2/4/4/4	-
4	1PE	A	603	-	-	0/8/8/13	-

There are no bond length outliers.

There are no bond angle outliers.

There are no chirality outliers.

All (4) torsion outliers are listed below:

Mol	Chain	Res	Type	Atoms
5	A	604	PG0	O1-C3-C4-O2
6	A	605	PEG	O2-C3-C4-O4
6	A	605	PEG	O1-C1-C2-O2
5	A	604	PG0	C3-C4-O2-C5

There are no ring outliers.

1 monomer is involved in 2 short contacts:

Mol	Chain	Res	Type	Clashes	Symm-Clashes
6	A	605	PEG	2	0

## 5.7 Other polymers [i](#)

There are no such residues in this entry.

## 5.8 Polymer linkage issues [i](#)

There are no chain breaks in this entry.

## 6 Fit of model and data [i](#)

### 6.1 Protein, DNA and RNA chains [i](#)

In the following table, the column labelled ‘#RSRZ > 2’ contains the number (and percentage) of RSRZ outliers, followed by percent RSRZ outliers for the chain as percentile scores relative to all X-ray entries and entries of similar resolution. The OWAB column contains the minimum, median, 95<sup>th</sup> percentile and maximum values of the occupancy-weighted average B-factor per residue. The column labelled ‘Q < 0.9’ lists the number of (and percentage) of residues with an average occupancy less than 0.9.

Mol	Chain	Analysed	<RSRZ>	#RSRZ>2	OWAB(Å <sup>2</sup> )	Q<0.9
1	A	469/489 (95%)	-0.38	11 (2%) 61 61	5, 13, 32, 57	22 (4%)
2	B	9/13 (69%)	0.09	0 100 100	11, 14, 37, 46	0
All	All	478/502 (95%)	-0.37	11 (2%) 61 61	5, 13, 33, 57	22 (4%)

All (11) RSRZ outliers are listed below:

Mol	Chain	Res	Type	RSRZ
1	A	460	VAL	5.7
1	A	2	GLY	3.3
1	A	109	GLU	3.1
1	A	111	GLY	3.0
1	A	581	ALA	3.0
1	A	587	MET	3.0
1	A	566	VAL	2.8
1	A	202	GLY	2.6
1	A	110	GLY	2.4
1	A	547	GLU	2.1
1	A	429	THR	2.0

### 6.2 Non-standard residues in protein, DNA, RNA chains [i](#)

There are no non-standard protein/DNA/RNA residues in this entry.

### 6.3 Carbohydrates [i](#)

There are no monosaccharides in this entry.

## 6.4 Ligands [i](#)

In the following table, the Atoms column lists the number of modelled atoms in the group and the number defined in the chemical component dictionary. The B-factors column lists the minimum, median, 95<sup>th</sup> percentile and maximum values of B factors of atoms in the group. The column labelled 'Q< 0.9' lists the number of atoms with occupancy less than 0.9.

Mol	Type	Chain	Res	Atoms	RSCC	RSR	B-factors(Å <sup>2</sup> )	Q<0.9
3	SO4	A	602	5/5	0.75	0.17	29,33,35,52	0
3	SO4	A	601	5/5	0.79	0.13	38,46,54,57	0
6	PEG	A	605	7/7	0.83	0.16	23,30,35,39	2
5	PG0	A	604	8/8	0.88	0.14	41,45,61,62	3
4	1PE	A	603	11/16	0.90	0.10	26,30,34,35	3

## 6.5 Other polymers [i](#)

There are no such residues in this entry.