



Full wwPDB X-ray Structure Validation Report ⓘ

Dec 4, 2023 – 01:32 am GMT

PDB ID : 2BUY
Title : Crystal Structure of Protocatechuate 3,4-Dioxygenase from Acinetobacter Sp. ADP1 Mutant R133H in Complex with Catechol
Authors : Vetting, M.W.; Valley, M.P.; D'Argenio, D.A.; Ornston, L.N.; Lipscomb, J.D.; Ohlendorf, D.H.
Deposited on : 2005-06-20
Resolution : 1.80 Å(reported)

This is a Full wwPDB X-ray Structure Validation Report for a publicly released PDB entry.

We welcome your comments at validation@mail.wwpdb.org

A user guide is available at

<https://www.wwpdb.org/validation/2017/XrayValidationReportHelp>

with specific help available everywhere you see the ⓘ symbol.

The types of validation reports are described at

<http://www.wwpdb.org/validation/2017/FAQs#types>.

The following versions of software and data (see [references ⓘ](#)) were used in the production of this report:

MolProbity : 4.02b-467
Mogul : 1.8.4, CSD as541be (2020)
Xtrriage (Phenix) : 1.13
EDS : 2.36
Percentile statistics : 20191225.v01 (using entries in the PDB archive December 25th 2019)
Refmac : 5.8.0158
CCP4 : 7.0.044 (Gargrove)
Ideal geometry (proteins) : Engh & Huber (2001)
Ideal geometry (DNA, RNA) : Parkinson et al. (1996)
Validation Pipeline (wwPDB-VP) : 2.36

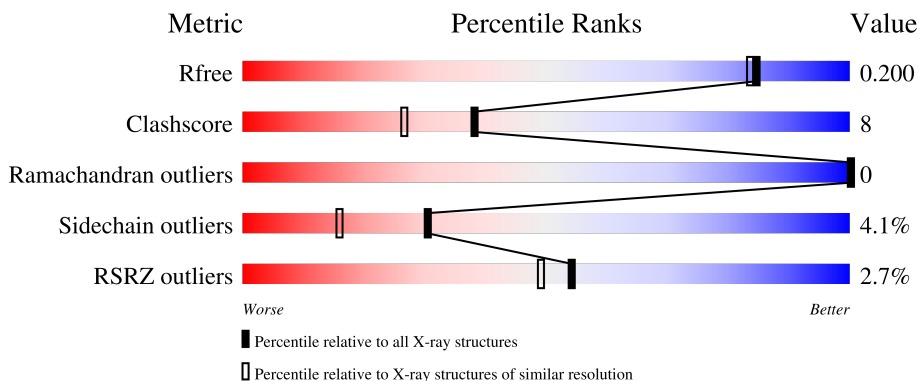
1 Overall quality at a glance

The following experimental techniques were used to determine the structure:

X-RAY DIFFRACTION

The reported resolution of this entry is 1.80 Å.

Percentile scores (ranging between 0-100) for global validation metrics of the entry are shown in the following graphic. The table shows the number of entries on which the scores are based.



Metric	Whole archive (#Entries)	Similar resolution (#Entries, resolution range(Å))
R_{free}	130704	5950 (1.80-1.80)
Clashscore	141614	6793 (1.80-1.80)
Ramachandran outliers	138981	6697 (1.80-1.80)
Sidechain outliers	138945	6696 (1.80-1.80)
RSRZ outliers	127900	5850 (1.80-1.80)

The table below summarises the geometric issues observed across the polymeric chains and their fit to the electron density. The red, orange, yellow and green segments of the lower bar indicate the fraction of residues that contain outliers for ≥ 3 , 2, 1 and 0 types of geometric quality criteria respectively. A grey segment represents the fraction of residues that are not modelled. The numeric value for each fraction is indicated below the corresponding segment, with a dot representing fractions $\leq 5\%$. The upper red bar (where present) indicates the fraction of residues that have poor fit to the electron density. The numeric value is given above the bar.

Mol	Chain	Length	Quality of chain
1	A	209	 4% 82% 14% ..
2	B	241	 % 80% 16% ..

The following table lists non-polymeric compounds, carbohydrate monomers and non-standard residues in protein, DNA, RNA chains that are outliers for geometric or electron-density-fit criteria:

Mol	Type	Chain	Res	Chirality	Geometry	Clashes	Electron density
4	CAQ	B	1542	-	-	X	-

2 Entry composition

There are 5 unique types of molecules in this entry. The entry contains 3772 atoms, of which 0 are hydrogens and 0 are deuteriums.

In the tables below, the ZeroOcc column contains the number of atoms modelled with zero occupancy, the AltConf column contains the number of residues with at least one atom in alternate conformation and the Trace column contains the number of residues modelled with at most 2 atoms.

- Molecule 1 is a protein called PROTOCATECHUATE 3,4-DIOXYGENASE ALPHA CHAIN.

Mol	Chain	Residues	Atoms				ZeroOcc	AltConf	Trace
			Total	C	N	O			
1	A	202	1601	1010	284	307	0	0	0

There is a discrepancy between the modelled and reference sequences:

Chain	Residue	Modelled	Actual	Comment	Reference
A	133	HIS	ARG	engineered mutation	UNP P20371

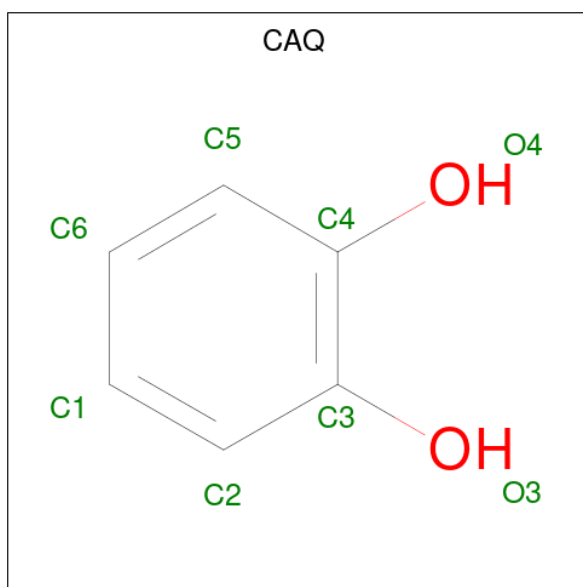
- Molecule 2 is a protein called PROTOCATECHUATE 3,4-DIOXYGENASE BETA CHAIN.

Mol	Chain	Residues	Atoms					ZeroOcc	AltConf	Trace
			Total	C	N	O	S			
2	B	238	1926	1224	345	352	5	0	0	0

- Molecule 3 is FE (III) ION (three-letter code: FE) (formula: Fe).

Mol	Chain	Residues	Atoms		ZeroOcc	AltConf
3	B	1	Total	Fe	0	0
			1	1		

- Molecule 4 is CATECHOL (three-letter code: CAQ) (formula: C₆H₆O₂).



Mol	Chain	Residues	Atoms	ZeroOcc	AltConf
4	B	1	Total C O 8 6 2	0	0
4	B	1	Total C O 8 6 2	0	0

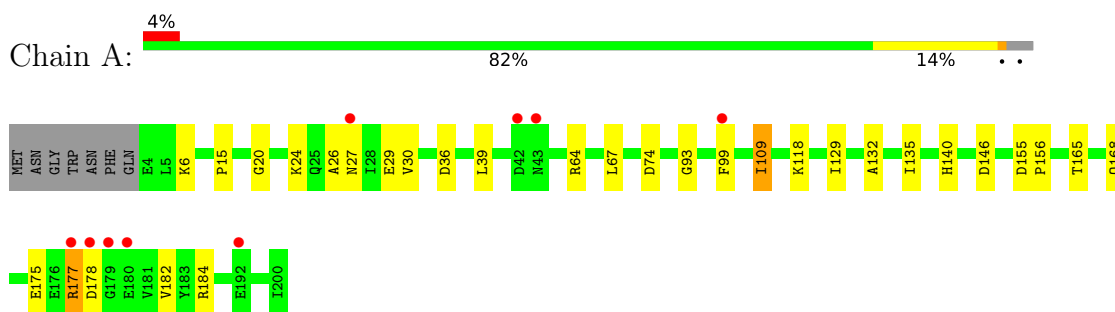
- Molecule 5 is water.

Mol	Chain	Residues	Atoms	ZeroOcc	AltConf
5	A	83	Total O 83 83	0	0
5	B	145	Total O 145 145	0	0

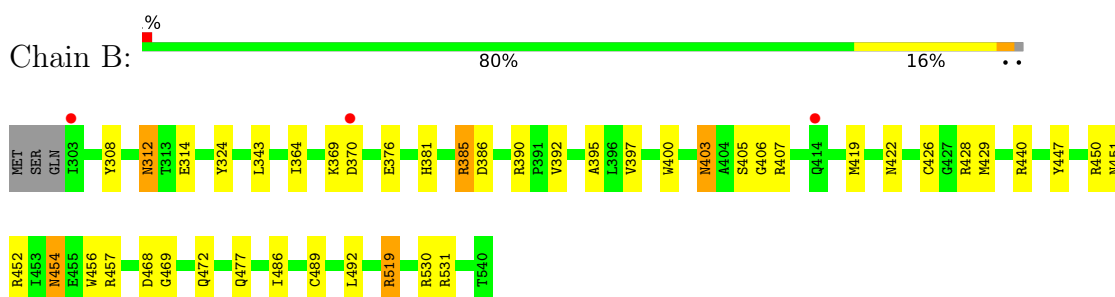
3 Residue-property plots [i](#)

These plots are drawn for all protein, RNA, DNA and oligosaccharide chains in the entry. The first graphic for a chain summarises the proportions of the various outlier classes displayed in the second graphic. The second graphic shows the sequence view annotated by issues in geometry and electron density. Residues are color-coded according to the number of geometric quality criteria for which they contain at least one outlier: green = 0, yellow = 1, orange = 2 and red = 3 or more. A red dot above a residue indicates a poor fit to the electron density ($RSRZ > 2$). Stretches of 2 or more consecutive residues without any outlier are shown as a green connector. Residues present in the sample, but not in the model, are shown in grey.

- Molecule 1: PROTOCATECHUATE 3,4-DIOXYGENASE ALPHA CHAIN



- Molecule 2: PROTOCATECHUATE 3,4-DIOXYGENASE BETA CHAIN



4 Data and refinement statistics i

Property	Value	Source
Space group	I 2 3	Depositor
Cell constants a, b, c, α , β , γ	144.70Å 144.70Å 144.70Å 90.00° 90.00° 90.00°	Depositor
Resolution (Å)	30.00 – 1.80 28.38 – 1.79	Depositor EDS
% Data completeness (in resolution range)	99.4 (30.00-1.80) 99.5 (28.38-1.79)	Depositor EDS
R_{merge}	0.05	Depositor
R_{sym}	(Not available)	Depositor
$\langle I/\sigma(I) \rangle$ ¹	4.96 (at 1.79Å)	Xtrriage
Refinement program	CNS 1.0	Depositor
R, R_{free}	0.175 , 0.209 0.168 , 0.200	Depositor DCC
R_{free} test set	2380 reflections (5.05%)	wwPDB-VP
Wilson B-factor (Å ²)	22.2	Xtrriage
Anisotropy	0.000	Xtrriage
Bulk solvent k_{sol} (e/Å ³), B_{sol} (Å ²)	0.35 , 47.0	EDS
L-test for twinning ²	$\langle L \rangle = 0.37$, $\langle L^2 \rangle = 0.20$	Xtrriage
Estimated twinning fraction	0.048 for -l,-k,-h	Xtrriage
F_o, F_c correlation	0.97	EDS
Total number of atoms	3772	wwPDB-VP
Average B, all atoms (Å ²)	26.0	wwPDB-VP

Xtrriage's analysis on translational NCS is as follows: *The largest off-origin peak in the Patterson function is 3.08% of the height of the origin peak. No significant pseudotranslation is detected.*

¹Intensities estimated from amplitudes.

²Theoretical values of $\langle |L| \rangle$, $\langle L^2 \rangle$ for acentric reflections are 0.5, 0.333 respectively for untwinned datasets, and 0.375, 0.2 for perfectly twinned datasets.

5 Model quality [i](#)

5.1 Standard geometry [i](#)

Bond lengths and bond angles in the following residue types are not validated in this section: CAQ, FE

The Z score for a bond length (or angle) is the number of standard deviations the observed value is removed from the expected value. A bond length (or angle) with $|Z| > 5$ is considered an outlier worth inspection. RMSZ is the root-mean-square of all Z scores of the bond lengths (or angles).

Mol	Chain	Bond lengths		Bond angles	
		RMSZ	# $ Z > 5$	RMSZ	# $ Z > 5$
1	A	0.91	0/1638	0.95	4/2224 (0.2%)
2	B	1.00	2/1981 (0.1%)	0.99	4/2691 (0.1%)
All	All	0.96	2/3619 (0.1%)	0.97	8/4915 (0.2%)

All (2) bond length outliers are listed below:

Mol	Chain	Res	Type	Atoms	Z	Observed(Å)	Ideal(Å)
2	B	426	CYS	CB-SG	-5.83	1.72	1.81
2	B	489	CYS	CB-SG	-5.02	1.73	1.81

All (8) bond angle outliers are listed below:

Mol	Chain	Res	Type	Atoms	Z	Observed(°)	Ideal(°)
2	B	519	ARG	NE-CZ-NH1	-9.89	115.36	120.30
1	A	74	ASP	CB-CG-OD1	7.28	124.85	118.30
2	B	451	ASN	N-CA-C	-6.46	93.56	111.00
2	B	519	ARG	NE-CZ-NH2	6.32	123.46	120.30
1	A	36	ASP	CB-CG-OD1	6.08	123.77	118.30
1	A	109	ILE	CG1-CB-CG2	5.36	123.19	111.40
1	A	146	ASP	CB-CG-OD1	5.33	123.10	118.30
2	B	452	ARG	N-CA-C	-5.33	96.62	111.00

There are no chirality outliers.

There are no planarity outliers.

5.2 Too-close contacts [i](#)

In the following table, the Non-H and H(model) columns list the number of non-hydrogen atoms and hydrogen atoms in the chain respectively. The H(added) column lists the number of hydrogen

atoms added and optimized by MolProbity. The Clashes column lists the number of clashes within the asymmetric unit, whereas Symm-Clashes lists symmetry-related clashes.

Mol	Chain	Non-H	H(model)	H(added)	Clashes	Symm-Clashes
1	A	1601	0	1542	22	0
2	B	1926	0	1858	31	0
3	B	1	0	0	0	0
4	B	16	0	10	8	0
5	A	83	0	0	2	0
5	B	145	0	0	2	0
All	All	3772	0	3410	53	0

The all-atom clashscore is defined as the number of clashes found per 1000 atoms (including hydrogen atoms). The all-atom clashscore for this structure is 8.

All (53) close contacts within the same asymmetric unit are listed below, sorted by their clash magnitude.

Atom-1	Atom-2	Interatomic distance (Å)	Clash overlap (Å)
2:B:457:ARG:HH12	2:B:477:GLN:HE22	1.26	0.81
2:B:469:GLY:H	2:B:472:GLN:HE21	1.32	0.76
1:A:177:ARG:HD3	1:A:182:VAL:HG21	1.71	0.71
2:B:369:LYS:H	2:B:422:ASN:HD22	1.37	0.70
2:B:403:ASN:C	2:B:403:ASN:HD22	1.98	0.67
1:A:118:LYS:HE3	5:A:2047:HOH:O	1.96	0.65
1:A:15:PRO:HD2	4:B:1542:CAQ:C5	2.27	0.65
2:B:369:LYS:H	2:B:422:ASN:ND2	1.95	0.64
2:B:385:ARG:HD3	2:B:385:ARG:N	2.13	0.63
1:A:15:PRO:HG3	4:B:1542:CAQ:H6	1.82	0.62
2:B:385:ARG:HD3	2:B:385:ARG:H	1.67	0.58
2:B:531:ARG:NH1	5:B:2138:HOH:O	2.36	0.58
2:B:403:ASN:ND2	2:B:405:SER:H	2.02	0.58
1:A:20:GLY:HA3	2:B:400:TRP:HB3	1.85	0.58
2:B:468:ASP:H	2:B:472:GLN:HE22	1.51	0.58
1:A:15:PRO:HG2	4:B:1542:CAQ:H5	1.84	0.58
2:B:469:GLY:H	2:B:472:GLN:NE2	2.02	0.56
1:A:24:LYS:NZ	1:A:29:GLU:HG2	2.20	0.56
2:B:312:ASN:C	2:B:312:ASN:HD22	2.08	0.56
1:A:6:LYS:NZ	5:A:2005:HOH:O	2.40	0.53
1:A:39:LEU:HD11	1:A:93:GLY:HA3	1.92	0.52
1:A:15:PRO:CG	4:B:1542:CAQ:C5	2.88	0.52
1:A:64:ARG:HD2	1:A:99:PHE:O	2.10	0.51
2:B:370:ASP:H	2:B:422:ASN:HD21	1.59	0.51
1:A:175:GLU:OE1	1:A:177:ARG:NH2	2.44	0.50

Continued on next page...

Continued from previous page...

Atom-1	Atom-2	Interatomic distance (Å)	Clash overlap (Å)
1:A:26:ALA:O	1:A:27:ASN:HB2	2.12	0.49
1:A:15:PRO:CG	4:B:1542:CAQ:C6	2.90	0.49
2:B:486:ILE:HG23	2:B:492:LEU:CD2	2.43	0.49
1:A:15:PRO:CD	4:B:1542:CAQ:C5	2.91	0.49
2:B:386:ASP:OD1	2:B:390:ARG:HD2	2.13	0.48
1:A:129:ILE:HD12	1:A:140:HIS:CE1	2.48	0.48
2:B:486:ILE:HG23	2:B:492:LEU:HD21	1.96	0.48
2:B:468:ASP:H	2:B:472:GLN:NE2	2.11	0.48
2:B:454:ASN:ND2	2:B:456:TRP:HE1	2.12	0.47
2:B:376:GLU:OE1	2:B:519:ARG:NH1	2.47	0.47
2:B:403:ASN:C	2:B:403:ASN:ND2	2.64	0.47
2:B:308:TYR:CZ	2:B:530:ARG:HG3	2.50	0.46
4:B:1542:CAQ:C3	5:B:2145:HOH:O	2.65	0.44
1:A:165:THR:O	1:A:168:GLN:HG2	2.18	0.44
2:B:312:ASN:ND2	2:B:314:GLU:H	2.16	0.43
2:B:406:GLY:O	2:B:447:TYR:HD1	2.01	0.43
2:B:457:ARG:NH1	2:B:477:GLN:HE22	2.03	0.43
1:A:15:PRO:CG	4:B:1542:CAQ:H5	2.47	0.43
1:A:24:LYS:HZ3	1:A:29:GLU:HG2	1.85	0.42
2:B:364:ILE:HD12	2:B:440:ARG:HG2	2.02	0.41
2:B:403:ASN:ND2	2:B:407:ARG:H	2.18	0.41
2:B:397:VAL:O	2:B:428:ARG:HA	2.20	0.41
1:A:24:LYS:HZ2	1:A:29:GLU:HG2	1.86	0.41
2:B:392:VAL:HG12	2:B:395:ALA:HB2	2.02	0.41
1:A:155:ASP:HA	1:A:156:PRO:HD3	1.80	0.41
1:A:132:ALA:HB3	1:A:135:ILE:HD12	2.02	0.40
2:B:343:LEU:HD23	2:B:343:LEU:HA	1.89	0.40
2:B:312:ASN:HD22	2:B:314:GLU:H	1.70	0.40

There are no symmetry-related clashes.

5.3 Torsion angles [\(i\)](#)

5.3.1 Protein backbone [\(i\)](#)

In the following table, the Percentiles column shows the percent Ramachandran outliers of the chain as a percentile score with respect to all X-ray entries followed by that with respect to entries of similar resolution.

The Analysed column shows the number of residues for which the backbone conformation was analysed, and the total number of residues.

Mol	Chain	Analysed	Favoured	Allowed	Outliers	Percentiles	
1	A	200/209 (96%)	191 (96%)	9 (4%)	0	100	100
2	B	236/241 (98%)	225 (95%)	11 (5%)	0	100	100
All	All	436/450 (97%)	416 (95%)	20 (5%)	0	100	100

There are no Ramachandran outliers to report.

5.3.2 Protein sidechains [i](#)

In the following table, the Percentiles column shows the percent sidechain outliers of the chain as a percentile score with respect to all X-ray entries followed by that with respect to entries of similar resolution.

The Analysed column shows the number of residues for which the sidechain conformation was analysed, and the total number of residues.

Mol	Chain	Analysed	Rotameric	Outliers	Percentiles	
1	A	169/175 (97%)	163 (96%)	6 (4%)	35	20
2	B	201/204 (98%)	192 (96%)	9 (4%)	27	13
All	All	370/379 (98%)	355 (96%)	15 (4%)	30	16

All (15) residues with a non-rotameric sidechain are listed below:

Mol	Chain	Res	Type
1	A	30	VAL
1	A	67	LEU
1	A	109	ILE
1	A	177	ARG
1	A	178	ASP
1	A	184	ARG
2	B	312	ASN
2	B	324	TYR
2	B	381	HIS
2	B	385	ARG
2	B	403	ASN
2	B	419	MET
2	B	429	MET
2	B	450	ARG
2	B	454	ASN

Sometimes sidechains can be flipped to improve hydrogen bonding and reduce clashes. All (11) such sidechains are listed below:

Mol	Chain	Res	Type
1	A	11	GLN
1	A	38	ASN
1	A	47	GLN
1	A	72	GLN
2	B	312	ASN
2	B	403	ASN
2	B	412	ASN
2	B	422	ASN
2	B	454	ASN
2	B	472	GLN
2	B	477	GLN

5.3.3 RNA [i](#)

There are no RNA molecules in this entry.

5.4 Non-standard residues in protein, DNA, RNA chains [i](#)

There are no non-standard protein/DNA/RNA residues in this entry.

5.5 Carbohydrates [i](#)

There are no monosaccharides in this entry.

5.6 Ligand geometry [i](#)

Of 3 ligands modelled in this entry, 1 is monoatomic - leaving 2 for Mogul analysis.

In the following table, the Counts columns list the number of bonds (or angles) for which Mogul statistics could be retrieved, the number of bonds (or angles) that are observed in the model and the number of bonds (or angles) that are defined in the Chemical Component Dictionary. The Link column lists molecule types, if any, to which the group is linked. The Z score for a bond length (or angle) is the number of standard deviations the observed value is removed from the expected value. A bond length (or angle) with $|Z| > 2$ is considered an outlier worth inspection. RMSZ is the root-mean-square of all Z scores of the bond lengths (or angles).

Mol	Type	Chain	Res	Link	Bond lengths			Bond angles		
					Counts	RMSZ	$\# Z > 2$	Counts	RMSZ	$\# Z > 2$
4	CAQ	B	1543	-	8,8,8	0.67	0	10,10,10	0.32	0
4	CAQ	B	1542	3	8,8,8	0.69	0	10,10,10	0.31	0

In the following table, the Chirals column lists the number of chiral outliers, the number of chiral

centers analysed, the number of these observed in the model and the number defined in the Chemical Component Dictionary. Similar counts are reported in the Torsion and Rings columns. '-' means no outliers of that kind were identified.

Mol	Type	Chain	Res	Link	Chirals	Torsions	Rings
4	CAQ	B	1543	-	-	-	0/1/1/1
4	CAQ	B	1542	3	-	-	0/1/1/1

There are no bond length outliers.

There are no bond angle outliers.

There are no chirality outliers.

There are no torsion outliers.

There are no ring outliers.

1 monomer is involved in 8 short contacts:

Mol	Chain	Res	Type	Clashes	Symm-Clashes
4	B	1542	CAQ	8	0

5.7 Other polymers [i](#)

There are no such residues in this entry.

5.8 Polymer linkage issues [i](#)

There are no chain breaks in this entry.

6 Fit of model and data [i](#)

6.1 Protein, DNA and RNA chains [i](#)

In the following table, the column labelled ‘#RSRZ> 2’ contains the number (and percentage) of RSRZ outliers, followed by percent RSRZ outliers for the chain as percentile scores relative to all X-ray entries and entries of similar resolution. The OWAB column contains the minimum, median, 95th percentile and maximum values of the occupancy-weighted average B-factor per residue. The column labelled ‘Q< 0.9’ lists the number of (and percentage) of residues with an average occupancy less than 0.9.

Mol	Chain	Analysed	<RSRZ>	#RSRZ>2	OWAB(Å ²)	Q<0.9
1	A	202/209 (96%)	0.05	9 (4%) 33 27	16, 28, 45, 68	0
2	B	238/241 (98%)	-0.39	3 (1%) 77 74	15, 21, 36, 45	0
All	All	440/450 (97%)	-0.18	12 (2%) 54 49	15, 23, 42, 68	0

All (12) RSRZ outliers are listed below:

Mol	Chain	Res	Type	RSRZ
1	A	178	ASP	5.1
1	A	177	ARG	4.9
1	A	42	ASP	4.8
2	B	303	ILE	4.5
1	A	192	GLU	3.5
2	B	370	ASP	3.4
1	A	27	ASN	3.0
1	A	179	GLY	2.6
1	A	99	PHE	2.3
1	A	180	GLU	2.2
1	A	43	ASN	2.2
2	B	414	GLN	2.0

6.2 Non-standard residues in protein, DNA, RNA chains [i](#)

There are no non-standard protein/DNA/RNA residues in this entry.

6.3 Carbohydrates [i](#)

There are no monosaccharides in this entry.

6.4 Ligands [i](#)

In the following table, the Atoms column lists the number of modelled atoms in the group and the number defined in the chemical component dictionary. The B-factors column lists the minimum, median, 95th percentile and maximum values of B factors of atoms in the group. The column labelled 'Q< 0.9' lists the number of atoms with occupancy less than 0.9.

Mol	Type	Chain	Res	Atoms	RSCC	RSR	B-factors(Å ²)	Q<0.9
4	CAQ	B	1542	8/8	0.81	0.25	46,48,48,49	0
4	CAQ	B	1543	8/8	0.89	0.16	53,54,54,55	0
3	FE	B	1541	1/1	0.99	0.03	27,27,27,27	0

6.5 Other polymers [i](#)

There are no such residues in this entry.