



wwPDB X-ray Structure Validation Summary Report ⓘ

Dec 15, 2024 – 07:21 PM EST

PDB ID : 2B11
Title : Crystal structure of the protein-protein complex between F82W cytochrome c and cytochrome c peroxidase
Authors : Kang, S.A.; Crane, B.R.
Deposited on : 2005-09-15
Resolution : 2.30 Å(reported)

This is a wwPDB X-ray Structure Validation Summary Report for a publicly released PDB entry.

We welcome your comments at validation@mail.wwpdb.org

A user guide is available at

<https://www.wwpdb.org/validation/2017/XrayValidationReportHelp>

with specific help available everywhere you see the ⓘ symbol.

The types of validation reports are described at

<http://www.wwpdb.org/validation/2017/FAQs#types>.

The following versions of software and data (see [references ⓘ](#)) were used in the production of this report:

MolProbity : 4.02b-467
Mogul : 2022.3.0, CSD as543be (2022)
Xtriage (Phenix) : 1.21
EDS : 3.0
buster-report : 1.1.7 (2018)
Percentile statistics : 20231227.v01 (using entries in the PDB archive December 27th 2023)
CCP4 : 9.0.004 (Gargrove)
Density-Fitness : 1.0.11
Ideal geometry (proteins) : Engh & Huber (2001)
Ideal geometry (DNA, RNA) : Parkinson et al. (1996)
Validation Pipeline (wwPDB-VP) : 2.40

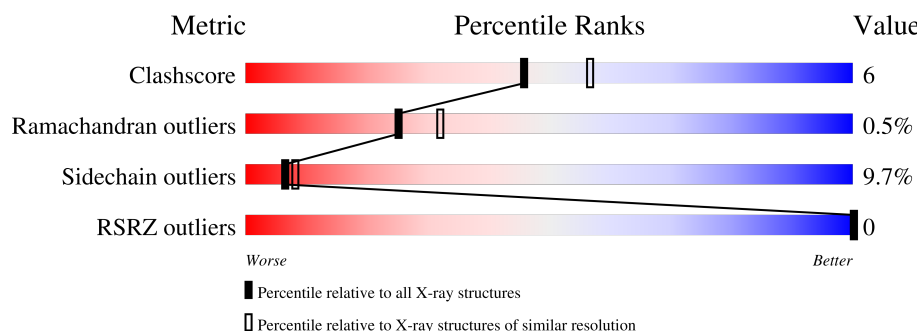
1 Overall quality at a glance

The following experimental techniques were used to determine the structure:

X-RAY DIFFRACTION

The reported resolution of this entry is 2.30 Å.

Percentile scores (ranging between 0-100) for global validation metrics of the entry are shown in the following graphic. The table shows the number of entries on which the scores are based.



Metric	Whole archive (#Entries)	Similar resolution (#Entries, resolution range(Å))
Clashscore	180529	6698 (2.30-2.30)
Ramachandran outliers	177936	6640 (2.30-2.30)
Sidechain outliers	177891	6640 (2.30-2.30)
RSRZ outliers	164620	5963 (2.30-2.30)

The table below summarises the geometric issues observed across the polymeric chains and their fit to the electron density. The red, orange, yellow and green segments of the lower bar indicate the fraction of residues that contain outliers for ≥ 3 , 2, 1 and 0 types of geometric quality criteria respectively. A grey segment represents the fraction of residues that are not modelled. The numeric value for each fraction is indicated below the corresponding segment, with a dot representing fractions $\leq 5\%$. The upper red bar (where present) indicates the fraction of residues that have poor fit to the electron density. The numeric value is given above the bar.

Mol	Chain	Length	Quality of chain
1	A	294	
1	C	294	
2	B	108	
2	D	108	

The following table lists non-polymeric compounds, carbohydrate monomers and non-standard residues in protein, DNA, RNA chains that are outliers for geometric or electron-density-fit criteria:

Mol	Type	Chain	Res	Chirality	Geometry	Clashes	Electron density
3	ZNH	A	1001	X	-	-	-
3	ZNH	B	1101	X	-	-	-

2 Entry composition

There are 5 unique types of molecules in this entry. The entry contains 7111 atoms, of which 0 are hydrogens and 0 are deuteriums.

In the tables below, the ZeroOcc column contains the number of atoms modelled with zero occupancy, the AltConf column contains the number of residues with at least one atom in alternate conformation and the Trace column contains the number of residues modelled with at most 2 atoms.

- Molecule 1 is a protein called Cytochrome c peroxidase, mitochondrial.

Mol	Chain	Residues	Atoms					ZeroOcc	AltConf	Trace
1	A	294	Total	C	N	O	S	0	0	0
			2370	1512	395	457	6			
1	C	294	Total	C	N	O	S	0	0	0
			2370	1512	395	457	6			

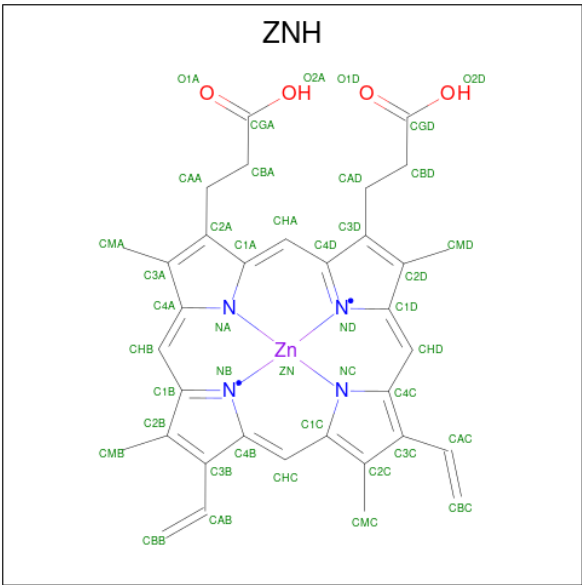
- Molecule 2 is a protein called Cytochrome c iso-1.

Mol	Chain	Residues	Atoms					ZeroOcc	AltConf	Trace
2	B	108	Total	C	N	O	S	0	0	0
			850	536	152	157	5			
2	D	108	Total	C	N	O	S	0	0	0
			850	536	152	157	5			

There are 2 discrepancies between the modelled and reference sequences:

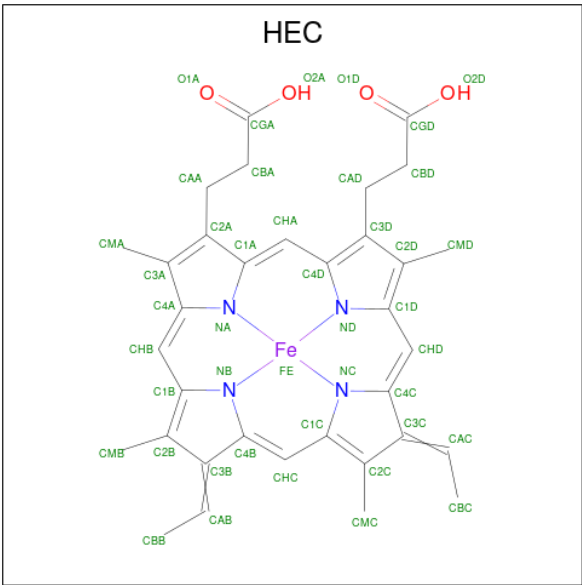
Chain	Residue	Modelled	Actual	Comment	Reference
B	382	TRP	PHE	engineered mutation	UNP P00044
D	882	TRP	PHE	engineered mutation	UNP P00044

- Molecule 3 is PROTOPORPHYRIN IX CONTAINING ZN (three-letter code: ZNH) (formula: $C_{34}H_{32}N_4O_4Zn$).



Mol	Chain	Residues	Atoms					ZeroOcc	AltConf
3	A	1	Total	C	N	O	Zn	0	0
			43	34	4	4	1		
3	B	1	Total	C	N	O	Zn	0	0
			43	34	4	4	1		

- Molecule 4 is HEME C (three-letter code: HEC) (formula: $C_{34}H_{34}FeN_4O_4$).



Mol	Chain	Residues	Atoms					ZeroOcc	AltConf
4	C	1	Total	C	Fe	N	O	0	0
			43	34	1	4	4		
4	D	1	Total	C	Fe	N	O	0	0
			43	34	1	4	4		

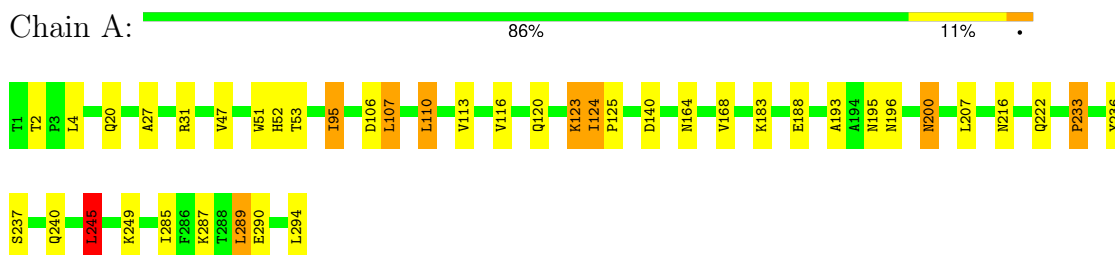
- Molecule 5 is water.

Mol	Chain	Residues	Atoms		ZeroOcc	AltConf
5	A	248	Total 248	O 248	0	0
5	B	70	Total 70	O 70	0	0
5	C	152	Total 152	O 152	0	0
5	D	29	Total 29	O 29	0	0

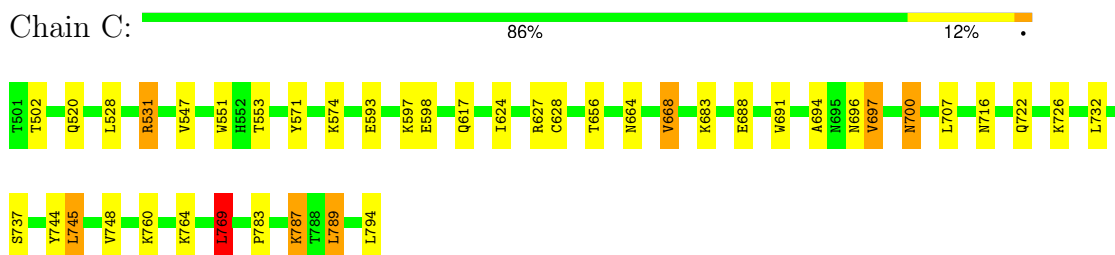
3 Residue-property plots [i](#)

These plots are drawn for all protein, RNA, DNA and oligosaccharide chains in the entry. The first graphic for a chain summarises the proportions of the various outlier classes displayed in the second graphic. The second graphic shows the sequence view annotated by issues in geometry and electron density. Residues are color-coded according to the number of geometric quality criteria for which they contain at least one outlier: green = 0, yellow = 1, orange = 2 and red = 3 or more. A red dot above a residue indicates a poor fit to the electron density ($RSRZ > 2$). Stretches of 2 or more consecutive residues without any outlier are shown as a green connector. Residues present in the sample, but not in the model, are shown in grey.

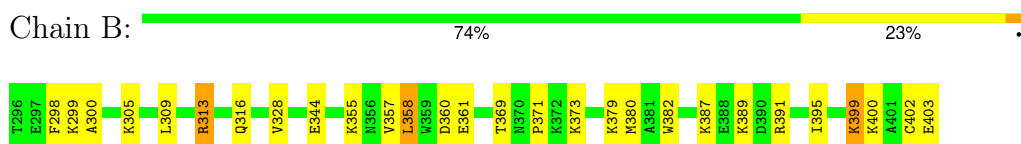
- Molecule 1: Cytochrome c peroxidase, mitochondrial



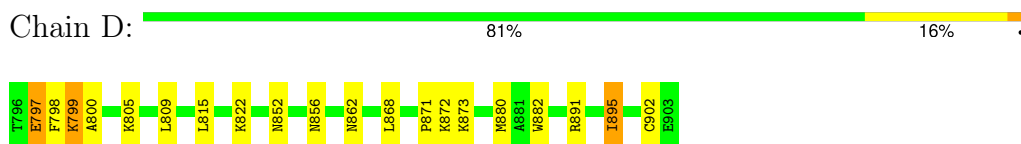
- Molecule 1: Cytochrome c peroxidase, mitochondrial



- Molecule 2: Cytochrome c iso-1



- Molecule 2: Cytochrome c iso-1



4 Data and refinement statistics

Property	Value	Source
Space group	P 1 21 1	Depositor
Cell constants a, b, c, α , β , γ	44.88Å 117.86Å 88.47Å 90.00° 104.23° 90.00°	Depositor
Resolution (Å)	30.00 – 2.30 30.00 – 2.31	Depositor EDS
% Data completeness (in resolution range)	94.1 (30.00-2.30) 90.3 (30.00-2.31)	Depositor EDS
R_{merge}	0.14	Depositor
R_{sym}	(Not available)	Depositor
$\langle I/\sigma(I) \rangle$ ¹	3.35 (at 2.31Å)	Xtriage
Refinement program	CNS	Depositor
R, R_{free}	0.265 , 0.293 0.249 , (Not available)	Depositor DCC
R_{free} test set	No test flags present.	wwPDB-VP
Wilson B-factor (Å ²)	30.9	Xtriage
Anisotropy	0.793	Xtriage
Bulk solvent k_{sol} (e/Å ³), B_{sol} (Å ²)	0.28 , 29.7	EDS
L-test for twinning ²	$\langle L \rangle = 0.44$, $\langle L^2 \rangle = 0.27$	Xtriage
Estimated twinning fraction	0.097 for h,-k,-h-l	Xtriage
F_o, F_c correlation	0.93	EDS
Total number of atoms	7111	wwPDB-VP
Average B, all atoms (Å ²)	42.0	wwPDB-VP

Xtriage's analysis on translational NCS is as follows: *The largest off-origin peak in the Patterson function is 5.91% of the height of the origin peak. No significant pseudotranslation is detected.*

¹Intensities estimated from amplitudes.

²Theoretical values of $\langle |L| \rangle$, $\langle L^2 \rangle$ for acentric reflections are 0.5, 0.333 respectively for untwinned datasets, and 0.375, 0.2 for perfectly twinned datasets.

5 Model quality

5.1 Standard geometry

Bond lengths and bond angles in the following residue types are not validated in this section: ZNH, HEC

The Z score for a bond length (or angle) is the number of standard deviations the observed value is removed from the expected value. A bond length (or angle) with $|Z| > 5$ is considered an outlier worth inspection. RMSZ is the root-mean-square of all Z scores of the bond lengths (or angles).

Mol	Chain	Bond lengths		Bond angles	
		RMSZ	$\# Z > 5$	RMSZ	$\# Z > 5$
1	A	0.76	1/2437 (0.0%)	0.80	1/3301 (0.0%)
1	C	0.76	1/2437 (0.0%)	0.78	2/3301 (0.1%)
2	B	1.02	1/869 (0.1%)	0.88	1/1163 (0.1%)
2	D	1.05	1/869 (0.1%)	0.81	0/1163
All	All	0.84	4/6612 (0.1%)	0.81	4/8928 (0.0%)

Chiral center outliers are detected by calculating the chiral volume of a chiral center and verifying if the center is modelled as a planar moiety or with the opposite hand. A planarity outlier is detected by checking planarity of atoms in a peptide group, atoms in a mainchain group or atoms of a sidechain that are expected to be planar.

Mol	Chain	#Chirality outliers	#Planarity outliers
1	C	0	1

All (4) bond length outliers are listed below:

Mol	Chain	Res	Type	Atoms	Z	Observed(Å)	Ideal(Å)
2	D	902	CYS	CB-SG	-24.01	1.41	1.82
2	B	402	CYS	CB-SG	-22.86	1.43	1.82
1	C	553	THR	CB-OG1	5.44	1.54	1.43
1	A	53	THR	CB-OG1	5.35	1.53	1.43

All (4) bond angle outliers are listed below:

Mol	Chain	Res	Type	Atoms	Z	Observed(°)	Ideal(°)
2	B	358	LEU	CA-CB-CG	7.70	133.00	115.30
1	C	745	LEU	CA-CB-CG	5.85	128.75	115.30
1	A	245	LEU	CA-CB-CG	5.67	128.34	115.30
1	C	769	LEU	CA-CB-CG	5.27	127.42	115.30

There are no chirality outliers.

All (1) planarity outliers are listed below:

Mol	Chain	Res	Type	Group
1	C	571	TYR	Sidechain

5.2 Too-close contacts ⓘ

In the following table, the Non-H and H(model) columns list the number of non-hydrogen atoms and hydrogen atoms in the chain respectively. The H(added) column lists the number of hydrogen atoms added and optimized by MolProbity. The Clashes column lists the number of clashes within the asymmetric unit, whereas Symm-Clashes lists symmetry-related clashes.

Mol	Chain	Non-H	H(model)	H(added)	Clashes	Symm-Clashes
1	A	2370	0	2246	26	0
1	C	2370	0	2243	25	0
2	B	850	0	847	11	0
2	D	850	0	847	6	0
3	A	43	0	30	1	0
3	B	43	0	28	2	0
4	C	43	0	32	3	0
4	D	43	0	28	1	0
5	A	248	0	0	10	0
5	B	70	0	0	3	0
5	C	152	0	0	10	0
5	D	29	0	0	3	0
All	All	7111	0	6301	73	0

The all-atom clashscore is defined as the number of clashes found per 1000 atoms (including hydrogen atoms). The all-atom clashscore for this structure is 6.

The worst 5 of 73 close contacts within the same asymmetric unit are listed below, sorted by their clash magnitude.

Atom-1	Atom-2	Interatomic distance (Å)	Clash overlap (Å)
1:A:27:ALA:HB2	5:A:1842:HOH:O	1.60	1.02
1:C:617:GLN:HE21	1:C:624:ILE:H	1.20	0.85
2:B:313:ARG:HH21	2:B:313:ARG:HG2	1.43	0.83
2:B:380:MET:HE3	5:B:1840:HOH:O	1.79	0.82
1:C:520:GLN:HE22	1:C:787:LYS:H	1.26	0.80

There are no symmetry-related clashes.

5.3 Torsion angles

5.3.1 Protein backbone

In the following table, the Percentiles column shows the percent Ramachandran outliers of the chain as a percentile score with respect to all X-ray entries followed by that with respect to entries of similar resolution.

The Analysed column shows the number of residues for which the backbone conformation was analysed, and the total number of residues.

Mol	Chain	Analysed	Favoured	Allowed	Outliers	Percentiles	
1	A	292/294 (99%)	281 (96%)	11 (4%)	0	100	100
1	C	292/294 (99%)	284 (97%)	8 (3%)	0	100	100
2	B	106/108 (98%)	99 (93%)	5 (5%)	2 (2%)	6	6
2	D	106/108 (98%)	98 (92%)	6 (6%)	2 (2%)	6	6
All	All	796/804 (99%)	762 (96%)	30 (4%)	4 (0%)	25	32

All (4) Ramachandran outliers are listed below:

Mol	Chain	Res	Type
2	D	856	ASN
2	B	299	LYS
2	B	300	ALA
2	D	799	LYS

5.3.2 Protein sidechains

In the following table, the Percentiles column shows the percent sidechain outliers of the chain as a percentile score with respect to all X-ray entries followed by that with respect to entries of similar resolution.

The Analysed column shows the number of residues for which the sidechain conformation was analysed, and the total number of residues.

Mol	Chain	Analysed	Rotameric	Outliers	Percentiles	
1	A	252/253 (100%)	233 (92%)	19 (8%)	11	15
1	C	252/253 (100%)	231 (92%)	21 (8%)	9	12
2	B	89/89 (100%)	74 (83%)	15 (17%)	1	1
2	D	89/89 (100%)	78 (88%)	11 (12%)	4	4
All	All	682/684 (100%)	616 (90%)	66 (10%)	6	8

5 of 66 residues with a non-rotameric sidechain are listed below:

Mol	Chain	Res	Type
2	D	805	LYS
2	D	815	LEU
2	D	895	ILE
2	B	344	GLU
2	B	316	GLN

Sometimes sidechains can be flipped to improve hydrogen bonding and reduce clashes. 5 of 28 such sidechains are listed below:

Mol	Chain	Res	Type
1	C	617	GLN
2	D	862	ASN
1	C	700	ASN
2	D	826	HIS
1	C	696	ASN

5.3.3 RNA [i](#)

There are no RNA molecules in this entry.

5.4 Non-standard residues in protein, DNA, RNA chains [i](#)

There are no non-standard protein/DNA/RNA residues in this entry.

5.5 Carbohydrates [i](#)

There are no oligosaccharides in this entry.

5.6 Ligand geometry [i](#)

4 ligands are modelled in this entry.

In the following table, the Counts columns list the number of bonds (or angles) for which Mogul statistics could be retrieved, the number of bonds (or angles) that are observed in the model and the number of bonds (or angles) that are defined in the Chemical Component Dictionary. The Link column lists molecule types, if any, to which the group is linked. The Z score for a bond length (or angle) is the number of standard deviations the observed value is removed from the expected value. A bond length (or angle) with $|Z| > 2$ is considered an outlier worth inspection. RMSZ is the root-mean-square of all Z scores of the bond lengths (or angles).

Mol	Type	Chain	Res	Link	Bond lengths			Bond angles		
					Counts	RMSZ	# Z > 2	Counts	RMSZ	# Z > 2
4	HEC	D	1301	2	32,50,50	1.26	3 (9%)	30,82,82	2.01	10 (33%)
4	HEC	C	1201	5,1	32,50,50	1.37	7 (21%)	30,82,82	2.16	15 (50%)
3	ZNH	A	1001	5,1	46,50,50	1.51	9 (19%)	55,82,82	1.65	11 (20%)
3	ZNH	B	1101	2	46,50,50	1.42	5 (10%)	55,82,82	1.25	4 (7%)

In the following table, the Chirals column lists the number of chiral outliers, the number of chiral centers analysed, the number of these observed in the model and the number defined in the Chemical Component Dictionary. Similar counts are reported in the Torsion and Rings columns. '-' means no outliers of that kind were identified.

Mol	Type	Chain	Res	Link	Chirals	Torsions	Rings
4	HEC	D	1301	2	-	2/10/54/54	-
4	HEC	C	1201	5,1	-	4/10/54/54	-
3	ZNH	A	1001	5,1	1/1/3/9	2/12/54/54	-
3	ZNH	B	1101	2	1/1/3/9	4/12/54/54	-

The worst 5 of 24 bond length outliers are listed below:

Mol	Chain	Res	Type	Atoms	Z	Observed(Å)	Ideal(Å)
3	B	1101	ZNH	CHC-C4B	5.05	1.47	1.34
3	A	1001	ZNH	C1C-NC	4.08	1.41	1.35
3	B	1101	ZNH	C3C-C2C	-3.25	1.36	1.40
4	D	1301	HEC	CBC-CAC	-3.21	1.37	1.49
4	D	1301	HEC	CBB-CAB	-3.14	1.37	1.49

The worst 5 of 40 bond angle outliers are listed below:

Mol	Chain	Res	Type	Atoms	Z	Observed(°)	Ideal(°)
3	A	1001	ZNH	C4B-C3B-C2B	-4.77	102.89	107.28
4	C	1201	HEC	CMB-C2B-C1B	-4.62	121.69	128.46
4	D	1301	HEC	CMB-C2B-C3B	4.33	130.91	125.82
4	D	1301	HEC	CMB-C2B-C1B	-4.03	122.55	128.46
3	B	1101	ZNH	C1A-CHA-C4D	4.02	134.56	126.02

All (2) chirality outliers are listed below:

Mol	Chain	Res	Type	Atom
3	A	1001	ZNH	NA
3	B	1101	ZNH	NA

5 of 12 torsion outliers are listed below:

Mol	Chain	Res	Type	Atoms
4	C	1201	HEC	CAD-CBD-CGD-O2D
3	A	1001	ZNH	CAA-CBA-CGA-O2A
4	C	1201	HEC	CAD-CBD-CGD-O1D
4	C	1201	HEC	CAA-CBA-CGA-O2A
4	C	1201	HEC	CAA-CBA-CGA-O1A

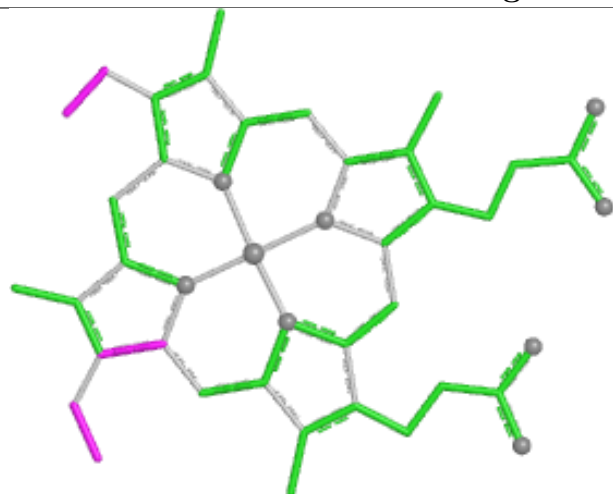
There are no ring outliers.

4 monomers are involved in 7 short contacts:

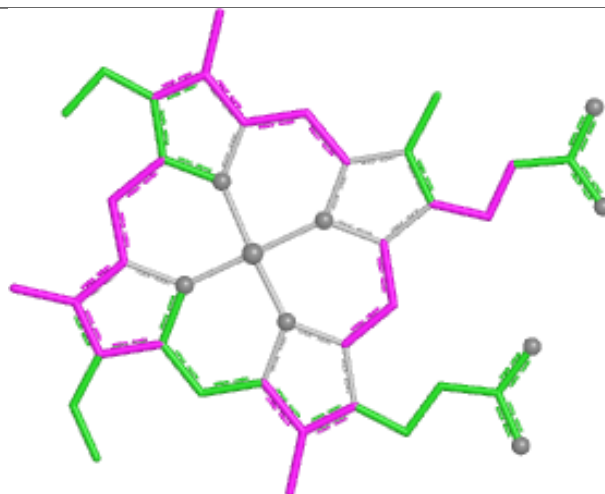
Mol	Chain	Res	Type	Clashes	Symm-Clashes
4	D	1301	HEC	1	0
4	C	1201	HEC	3	0
3	A	1001	ZNH	1	0
3	B	1101	ZNH	2	0

The following is a two-dimensional graphical depiction of Mogul quality analysis of bond lengths, bond angles, torsion angles, and ring geometry for all instances of the Ligand of Interest. In addition, ligands with molecular weight > 250 and outliers as shown on the validation Tables will also be included. For torsion angles, if less than 5% of the Mogul distribution of torsion angles is within 10 degrees of the torsion angle in question, then that torsion angle is considered an outlier. Any bond that is central to one or more torsion angles identified as an outlier by Mogul will be highlighted in the graph. For rings, the root-mean-square deviation (RMSD) between the ring in question and similar rings identified by Mogul is calculated over all ring torsion angles. If the average RMSD is greater than 60 degrees and the minimal RMSD between the ring in question and any Mogul-identified rings is also greater than 60 degrees, then that ring is considered an outlier. The outliers are highlighted in purple. The color gray indicates Mogul did not find sufficient equivalents in the CSD to analyse the geometry.

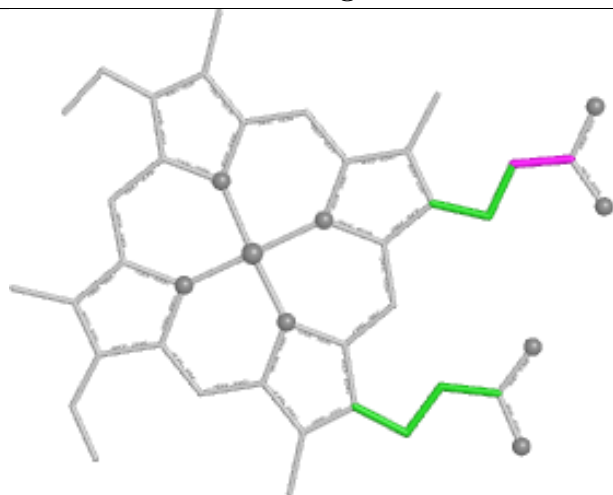
Ligand HEC D 1301



Bond lengths



Bond angles

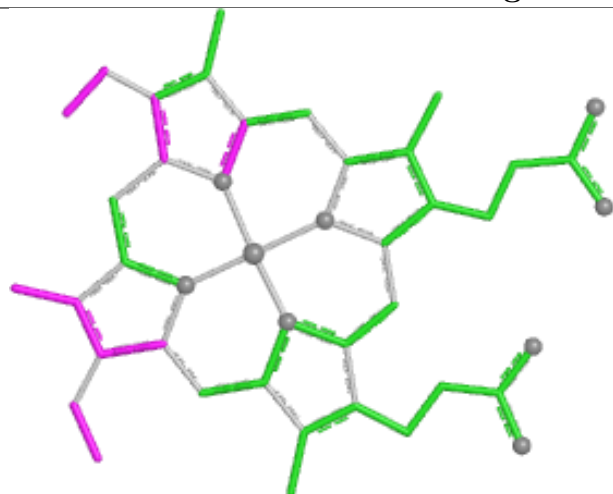


Torsions

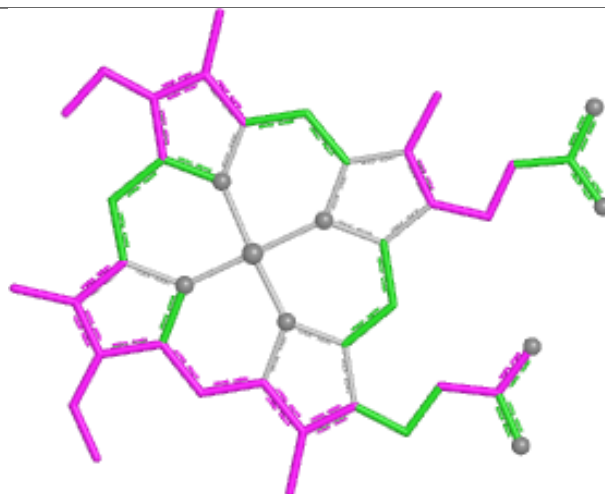


Rings

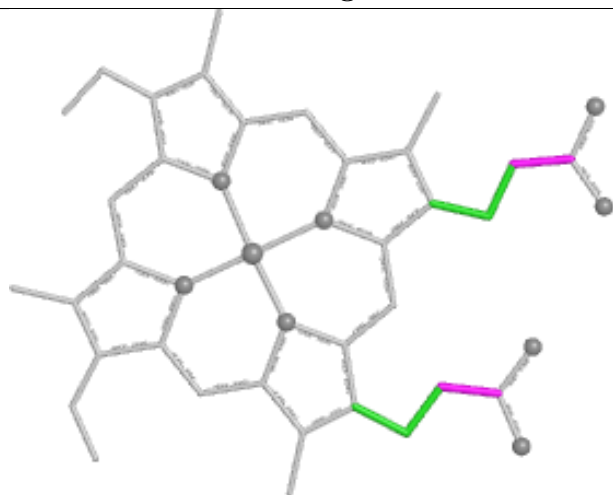
Ligand HEC C 1201



Bond lengths



Bond angles

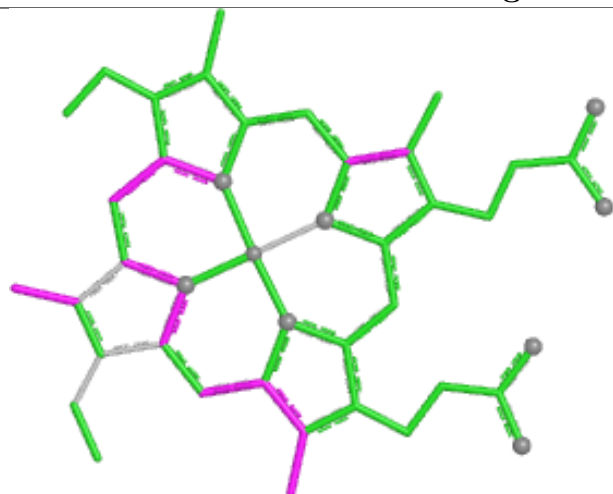


Torsions

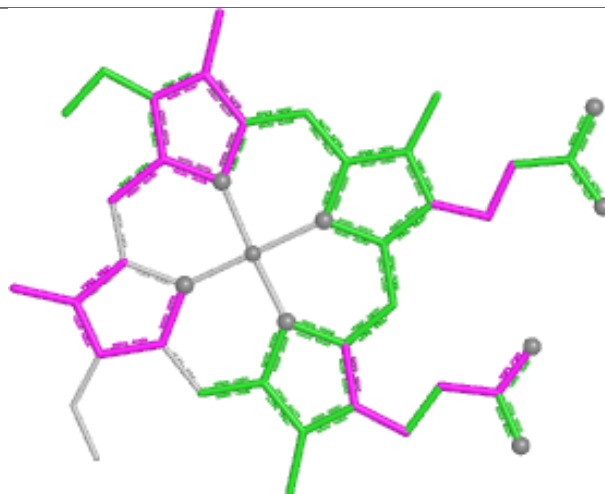


Rings

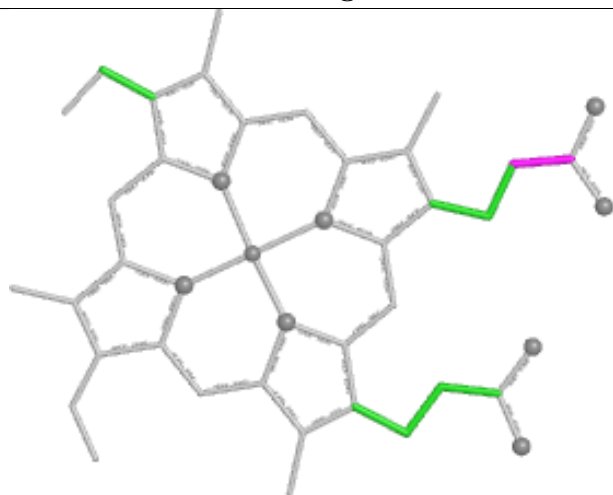
Ligand ZNH A 1001



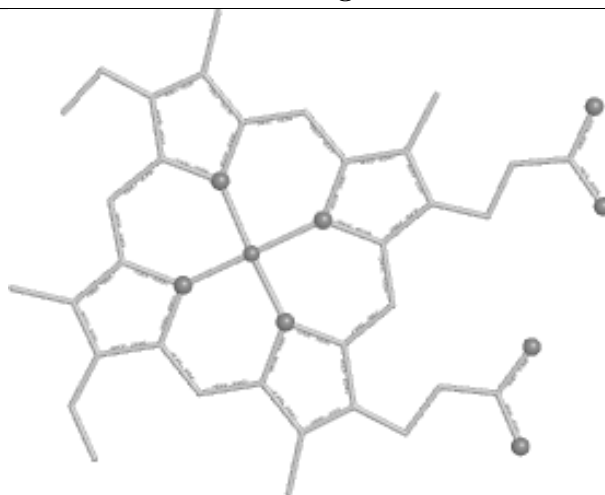
Bond lengths



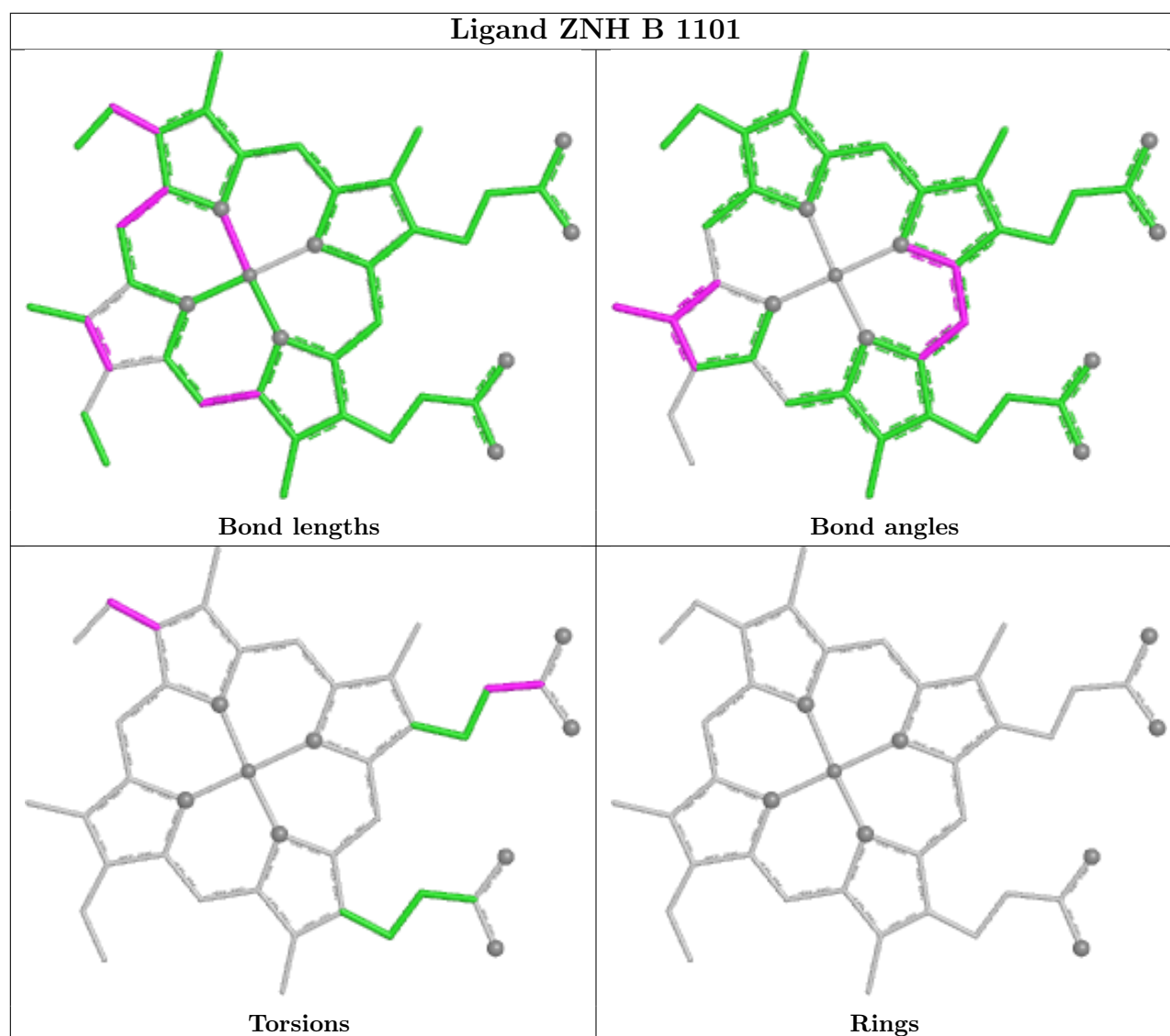
Bond angles



Torsions



Rings



5.7 Other polymers [i](#)

There are no such residues in this entry.

5.8 Polymer linkage issues [i](#)

There are no chain breaks in this entry.

6 Fit of model and data [i](#)

6.1 Protein, DNA and RNA chains [i](#)

In the following table, the column labelled ‘#RSRZ> 2’ contains the number (and percentage) of RSRZ outliers, followed by percent RSRZ outliers for the chain as percentile scores relative to all X-ray entries and entries of similar resolution. The OWAB column contains the minimum, median, 95th percentile and maximum values of the occupancy-weighted average B-factor per residue. The column labelled ‘Q< 0.9’ lists the number of (and percentage) of residues with an average occupancy less than 0.9.

Mol	Chain	Analysed	<RSRZ>	#RSRZ>2	OWAB(Å ²)	Q<0.9
1	A	294/294 (100%)	-1.10	0 100 100	13, 33, 54, 105	0
1	C	294/294 (100%)	-1.09	0 100 100	12, 33, 54, 109	0
2	B	108/108 (100%)	-0.90	0 100 100	28, 50, 83, 113	0
2	D	108/108 (100%)	-0.73	0 100 100	30, 64, 85, 108	0
All	All	804/804 (100%)	-1.02	0 100 100	12, 37, 76, 113	0

There are no RSRZ outliers to report.

6.2 Non-standard residues in protein, DNA, RNA chains [i](#)

There are no non-standard protein/DNA/RNA residues in this entry.

6.3 Carbohydrates [i](#)

There are no monosaccharides in this entry.

6.4 Ligands [i](#)

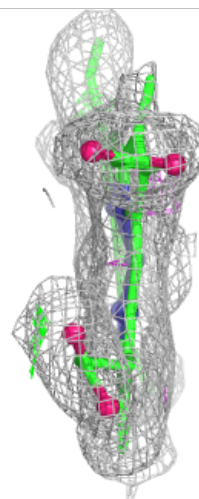
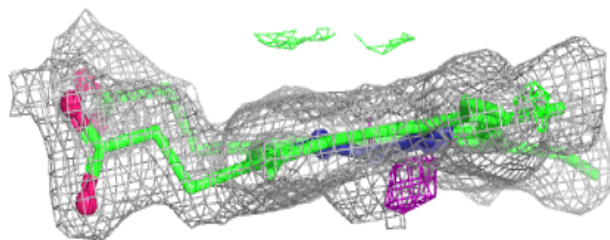
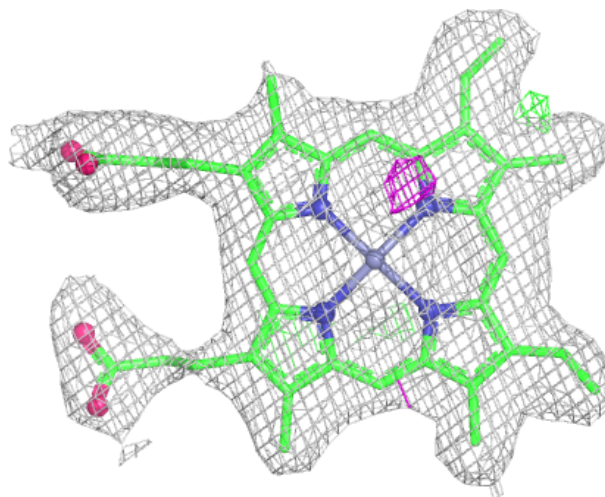
In the following table, the Atoms column lists the number of modelled atoms in the group and the number defined in the chemical component dictionary. The B-factors column lists the minimum, median, 95th percentile and maximum values of B factors of atoms in the group. The column labelled ‘Q< 0.9’ lists the number of atoms with occupancy less than 0.9.

Mol	Type	Chain	Res	Atoms	RSCC	RSR	B-factors(Å ²)	Q<0.9
3	ZNH	A	1001	43/43	0.99	0.04	5,17,33,45	0
3	ZNH	B	1101	43/43	0.99	0.04	24,34,44,45	0
4	HEC	C	1201	43/43	0.99	0.03	2,13,27,32	0
4	HEC	D	1301	43/43	0.99	0.05	26,39,47,53	0

The following is a graphical depiction of the model fit to experimental electron density of all instances of the Ligand of Interest. In addition, ligands with molecular weight > 250 and outliers as shown on the geometry validation Tables will also be included. Each fit is shown from different orientation to approximate a three-dimensional view.

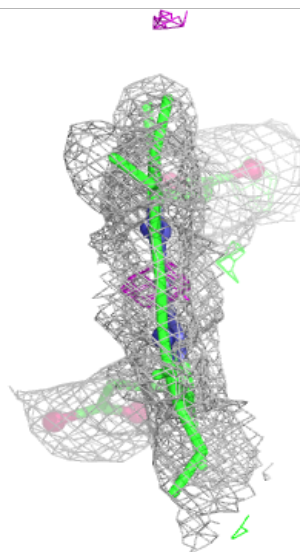
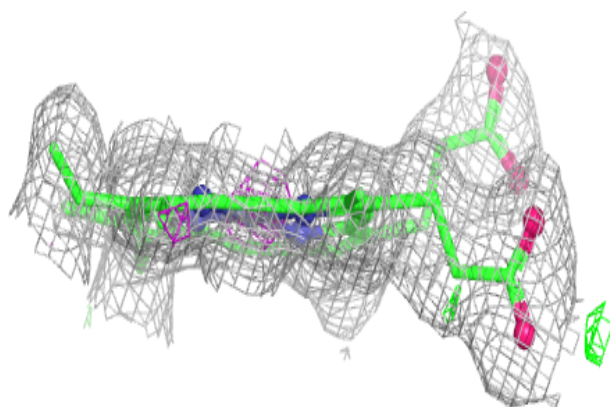
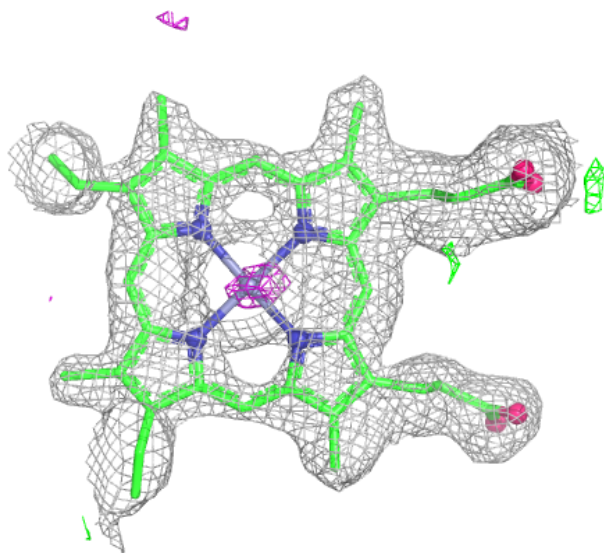
Electron density around ZNH A 1001:

$2mF_o-DF_c$ (at 0.7 rmsd) in gray
 mF_o-DF_c (at 3 rmsd) in purple (negative)
and green (positive)



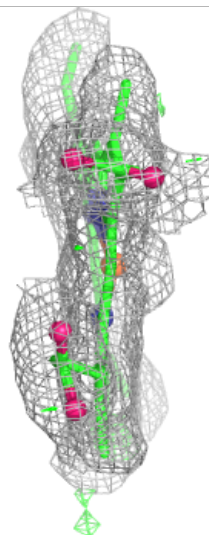
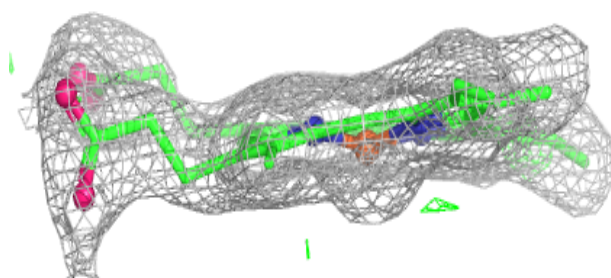
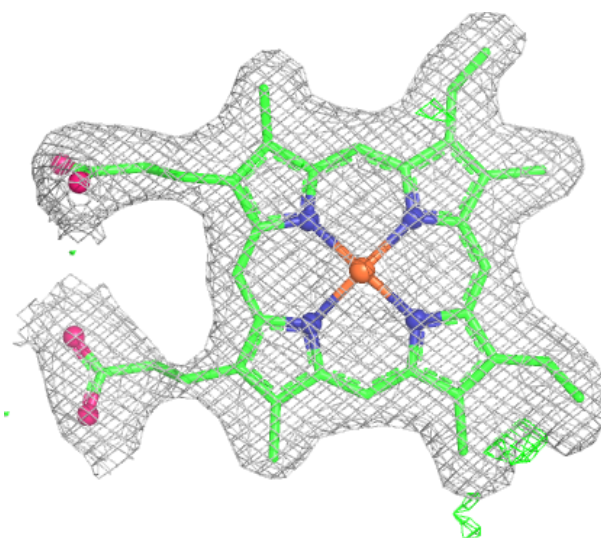
Electron density around ZNH B 1101:

$2mF_o-DF_c$ (at 0.7 rmsd) in gray
 mF_o-DF_c (at 3 rmsd) in purple (negative)
and green (positive)



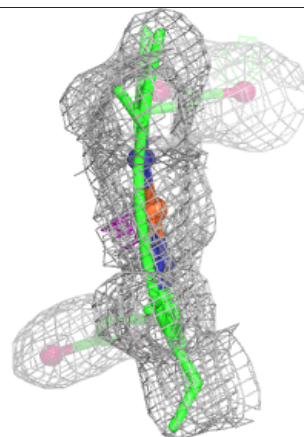
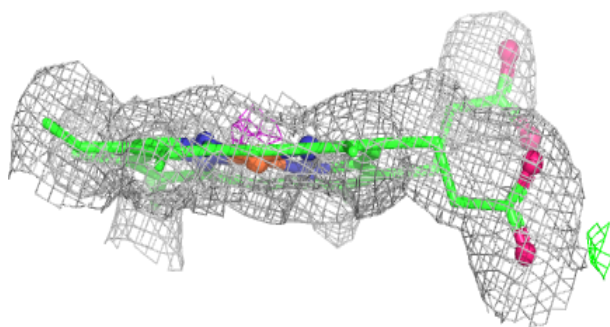
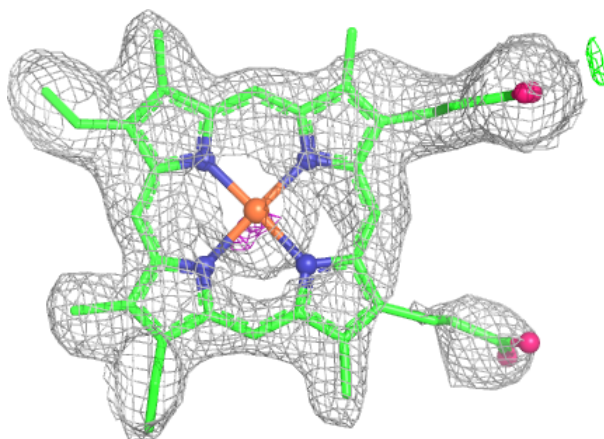
Electron density around HEC C 1201:

$2mF_o-DF_c$ (at 0.7 rmsd) in gray
 mF_o-DF_c (at 3 rmsd) in purple (negative)
and green (positive)



Electron density around HEC D 1301:

$2mF_o - DF_c$ (at 0.7 rmsd) in gray
 $mF_o - DF_c$ (at 3 rmsd) in purple (negative)
and green (positive)



6.5 Other polymers [i](#)

There are no such residues in this entry.