



# wwPDB X-ray Structure Validation Summary Report ⓘ

Jan 26, 2026 – 12:34 PM EST

PDB ID : 10KE / pdb\_000010ke  
Title : Crystal structure of Capsular polysaccharide biosynthesis protein from *Bordetella pertussis* in complex with NAD and uridine-diphosphate-n-acetylgalactosamine (cocrystallization)  
Authors : Seattle Structural Genomics Center for Infectious Disease (SSGCID)  
Deposited on : 2026-01-23  
Resolution : 1.70 Å(reported)

This is a wwPDB X-ray Structure Validation Summary Report for a publicly released PDB entry.

We welcome your comments at [validation@mail.wwpdb.org](mailto:validation@mail.wwpdb.org)

A user guide is available at

<https://www.wwpdb.org/validation/2017/XrayValidationReportHelp>

with specific help available everywhere you see the ⓘ symbol.

The types of validation reports are described at

<http://www.wwpdb.org/validation/2017/FAQs#types>.

---

The following versions of software and data (see [references ⓘ](#)) were used in the production of this report:

MolProbity	:	4-5-2 with Phenix2.0
Mogul	:	2022.3.0, CSD as543be (2022)
Xtriage (Phenix)	:	2.0
EDS	:	3.0
buster-report	:	1.1.7 (2018)
Percentile statistics	:	20231227.v01 (using entries in the PDB archive December 27th 2023)
CCP4	:	9.0.010 (Gargrove)
Density-Fitness	:	1.0.12
Ideal geometry (proteins)	:	Engh & Huber (2001)
Ideal geometry (DNA, RNA)	:	Parkinson et al. (1996)
Validation Pipeline (wwPDB-VP)	:	2.47

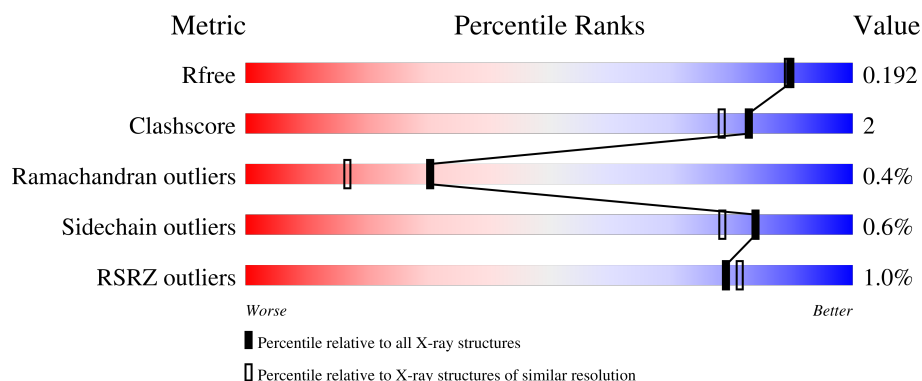
# 1 Overall quality at a glance

The following experimental techniques were used to determine the structure:

*X-RAY DIFFRACTION*

The reported resolution of this entry is 1.70 Å.

Percentile scores (ranging between 0-100) for global validation metrics of the entry are shown in the following graphic. The table shows the number of entries on which the scores are based.



Metric	Whole archive (#Entries)	Similar resolution (#Entries, resolution range(Å))
$R_{free}$	164625	5161 (1.70-1.70)
Clashscore	180529	5671 (1.70-1.70)
Ramachandran outliers	177936	5594 (1.70-1.70)
Sidechain outliers	177891	5594 (1.70-1.70)
RSRZ outliers	164620	5159 (1.70-1.70)

The table below summarises the geometric issues observed across the polymeric chains and their fit to the electron density. The red, orange, yellow and green segments of the lower bar indicate the fraction of residues that contain outliers for  $\geq 3$ , 2, 1 and 0 types of geometric quality criteria respectively. A grey segment represents the fraction of residues that are not modelled. The numeric value for each fraction is indicated below the corresponding segment, with a dot representing fractions  $\leq 5\%$ . The upper red bar (where present) indicates the fraction of residues that have poor fit to the electron density. The numeric value is given above the bar.

Mol	Chain	Length	Quality of chain
1	A	348	<div> <div>%</div> <div> <div></div> <div>91%</div> <div>6%</div> <div>.</div> </div> </div>
1	B	348	<div> <div>%</div> <div> <div></div> <div>92%</div> <div>5%</div> <div>..</div> </div> </div>
1	C	348	<div> <div>%</div> <div> <div></div> <div>94%</div> <div>.</div> <div>..</div> </div> </div>
1	D	348	<div> <div>%</div> <div> <div></div> <div>91%</div> <div>6%</div> <div>.</div> </div> </div>

## 2 Entry composition

There are 5 unique types of molecules in this entry. The entry contains 11925 atoms, of which 0 are hydrogens and 0 are deuteriums.

In the tables below, the ZeroOcc column contains the number of atoms modelled with zero occupancy, the AltConf column contains the number of residues with at least one atom in alternate conformation and the Trace column contains the number of residues modelled with at most 2 atoms.

- Molecule 1 is a protein called Capsular polysaccharide biosynthesis protein.

Mol	Chain	Residues	Atoms					ZeroOcc	AltConf	Trace
1	A	339	Total	C	N	O	S	0	4	0
			2627	1662	461	496	8			
1	B	340	Total	C	N	O	S	0	8	0
			2653	1680	463	501	9			
1	C	339	Total	C	N	O	S	0	8	0
			2642	1677	464	492	9			
1	D	339	Total	C	N	O	S	0	4	0
			2622	1663	461	490	8			

There are 32 discrepancies between the modelled and reference sequences:

Chain	Residue	Modelled	Actual	Comment	Reference
A	-6	MET	-	initiating methionine	UNP Q7TTK0
A	-5	ALA	-	expression tag	UNP Q7TTK0
A	-4	HIS	-	expression tag	UNP Q7TTK0
A	-3	HIS	-	expression tag	UNP Q7TTK0
A	-2	HIS	-	expression tag	UNP Q7TTK0
A	-1	HIS	-	expression tag	UNP Q7TTK0
A	0	HIS	-	expression tag	UNP Q7TTK0
A	1	HIS	-	expression tag	UNP Q7TTK0
B	-6	MET	-	initiating methionine	UNP Q7TTK0
B	-5	ALA	-	expression tag	UNP Q7TTK0
B	-4	HIS	-	expression tag	UNP Q7TTK0
B	-3	HIS	-	expression tag	UNP Q7TTK0
B	-2	HIS	-	expression tag	UNP Q7TTK0
B	-1	HIS	-	expression tag	UNP Q7TTK0
B	0	HIS	-	expression tag	UNP Q7TTK0
B	1	HIS	-	expression tag	UNP Q7TTK0
C	-6	MET	-	initiating methionine	UNP Q7TTK0
C	-5	ALA	-	expression tag	UNP Q7TTK0
C	-4	HIS	-	expression tag	UNP Q7TTK0
C	-3	HIS	-	expression tag	UNP Q7TTK0
C	-2	HIS	-	expression tag	UNP Q7TTK0

*Continued on next page...*

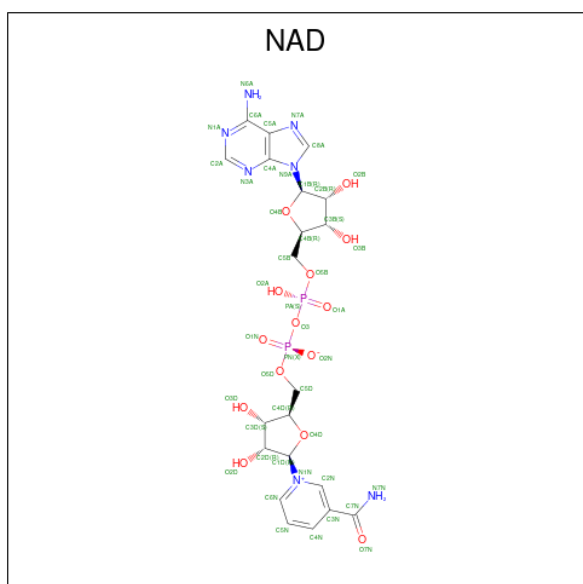
Continued from previous page...

Chain	Residue	Modelled	Actual	Comment	Reference
C	-1	HIS	-	expression tag	UNP Q7TTK0
C	0	HIS	-	expression tag	UNP Q7TTK0
C	1	HIS	-	expression tag	UNP Q7TTK0
D	-6	MET	-	initiating methionine	UNP Q7TTK0
D	-5	ALA	-	expression tag	UNP Q7TTK0
D	-4	HIS	-	expression tag	UNP Q7TTK0
D	-3	HIS	-	expression tag	UNP Q7TTK0
D	-2	HIS	-	expression tag	UNP Q7TTK0
D	-1	HIS	-	expression tag	UNP Q7TTK0
D	0	HIS	-	expression tag	UNP Q7TTK0
D	1	HIS	-	expression tag	UNP Q7TTK0

- Molecule 2 is CHLORIDE ION (CCD ID: CL) (formula: Cl).

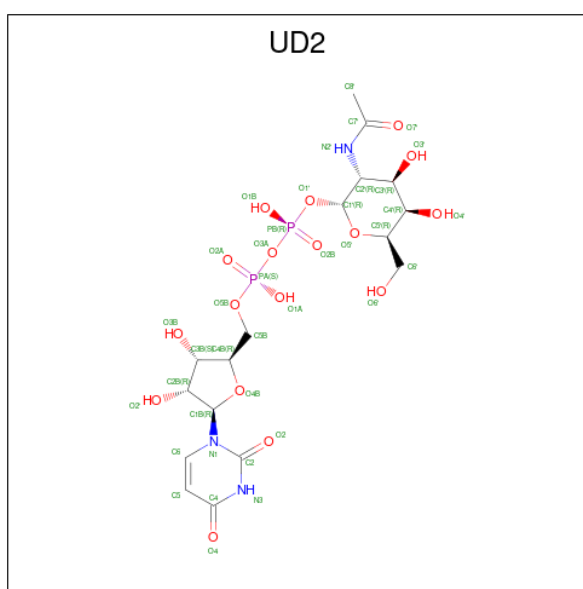
Mol	Chain	Residues	Atoms	ZeroOcc	AltConf
2	A	1	Total Cl 1 1	0	0
2	B	2	Total Cl 2 2	0	0
2	D	1	Total Cl 1 1	0	0

- Molecule 3 is NICOTINAMIDE-ADENINE-DINUCLEOTIDE (CCD ID: NAD) (formula: C<sub>21</sub>H<sub>27</sub>N<sub>7</sub>O<sub>14</sub>P<sub>2</sub>) (labeled as "Ligand of Interest" by depositor).



Mol	Chain	Residues	Atoms					ZeroOcc	AltConf
3	A	1	Total	C	N	O	P	0	0
			44	21	7	14	2		
3	B	1	Total	C	N	O	P	0	0
			44	21	7	14	2		
3	C	1	Total	C	N	O	P	0	0
			44	21	7	14	2		
3	D	1	Total	C	N	O	P	0	0
			44	21	7	14	2		

- Molecule 4 is URIDINE-DIPHOSPHATE-N-ACETYLGALACTOSAMINE (CCD ID: UD2) (formula:  $C_{17}H_{27}N_3O_{17}P_2$ ) (labeled as "Ligand of Interest" by depositor).



Mol	Chain	Residues	Atoms					ZeroOcc	AltConf
4	A	1	Total	C	N	O	P	0	0
			39	17	3	17	2		
4	B	1	Total	C	N	O	P	0	0
			39	17	3	17	2		
4	C	1	Total	C	N	O	P	0	0
			39	17	3	17	2		
4	D	1	Total	C	N	O	P	0	0
			39	17	3	17	2		

- Molecule 5 is water.

Mol	Chain	Residues	Atoms		ZeroOcc	AltConf
5	A	267	Total	O	0	1
			267	267		

*Continued on next page...*

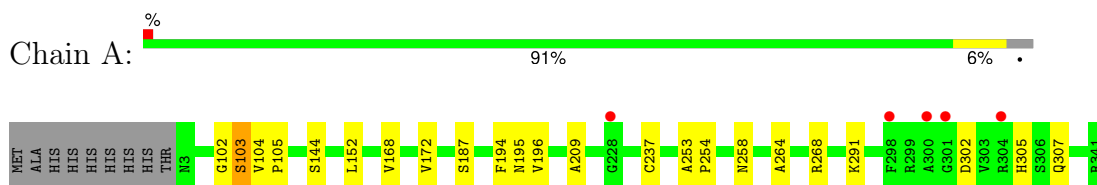
*Continued from previous page...*

Mol	Chain	Residues	Atoms		ZeroOcc	AltConf
5	B	269	Total 269	O 269	0	0
5	C	251	Total 251	O 251	0	0
5	D	258	Total 258	O 258	0	0

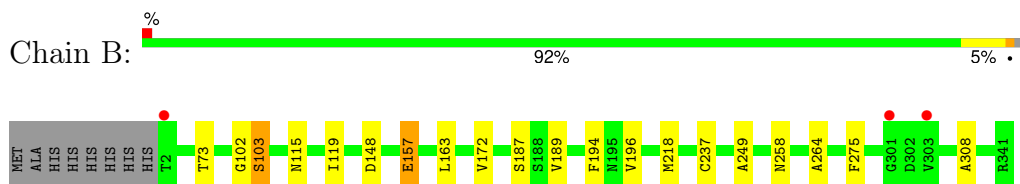
### 3 Residue-property plots [i](#)

These plots are drawn for all protein, RNA, DNA and oligosaccharide chains in the entry. The first graphic for a chain summarises the proportions of the various outlier classes displayed in the second graphic. The second graphic shows the sequence view annotated by issues in geometry and electron density. Residues are color-coded according to the number of geometric quality criteria for which they contain at least one outlier: green = 0, yellow = 1, orange = 2 and red = 3 or more. A red dot above a residue indicates a poor fit to the electron density ( $RSRZ > 2$ ). Stretches of 2 or more consecutive residues without any outlier are shown as a green connector. Residues present in the sample, but not in the model, are shown in grey.

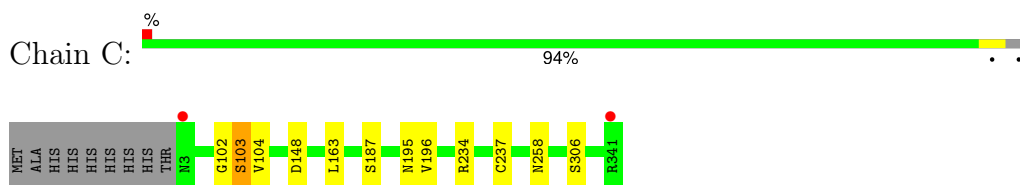
- Molecule 1: Capsular polysaccharide biosynthesis protein



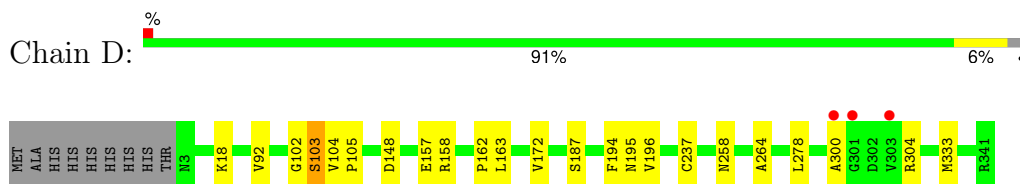
- Molecule 1: Capsular polysaccharide biosynthesis protein



- Molecule 1: Capsular polysaccharide biosynthesis protein



- Molecule 1: Capsular polysaccharide biosynthesis protein



## 4 Data and refinement statistics

Property	Value	Source
Space group	P 1 21 1	Depositor
Cell constants a, b, c, $\alpha$ , $\beta$ , $\gamma$	53.92Å 155.19Å 79.16Å 90.00° 92.35° 90.00°	Depositor
Resolution (Å)	44.25 – 1.70 44.25 – 1.70	Depositor EDS
% Data completeness (in resolution range)	99.0 (44.25-1.70) 99.0 (44.25-1.70)	Depositor EDS
$R_{merge}$	0.08	Depositor
$R_{sym}$	(Not available)	Depositor
$\langle I/\sigma(I) \rangle$ <sup>1</sup>	2.52 (at 1.70Å)	Xtriage
Refinement program	PHENIX (2.0_5847: ???)	Depositor
R, $R_{free}$	0.150 , 0.184 0.159 , 0.192	Depositor DCC
$R_{free}$ test set	7332 reflections (5.15%)	wwPDB-VP
Wilson B-factor (Å <sup>2</sup> )	21.4	Xtriage
Anisotropy	0.664	Xtriage
Bulk solvent $k_{sol}$ (e/Å <sup>3</sup> ), $B_{sol}$ (Å <sup>2</sup> )	0.33 , 36.2	EDS
L-test for twinning <sup>2</sup>	$\langle  L  \rangle = 0.50$ , $\langle L^2 \rangle = 0.34$	Xtriage
Estimated twinning fraction	0.033 for h,-k,-l	Xtriage
$F_o, F_c$ correlation	0.97	EDS
Total number of atoms	11925	wwPDB-VP
Average B, all atoms (Å <sup>2</sup> )	29.0	wwPDB-VP

Xtriage's analysis on translational NCS is as follows: *The analyses of the Patterson function reveals a significant off-origin peak that is 41.37 % of the origin peak, indicating pseudo-translational symmetry. The chance of finding a peak of this or larger height randomly in a structure without pseudo-translational symmetry is equal to 2.3860e-04. The detected translational NCS is most likely also responsible for the elevated intensity ratio.*

<sup>1</sup>Intensities estimated from amplitudes.

<sup>2</sup>Theoretical values of  $\langle |L| \rangle$ ,  $\langle L^2 \rangle$  for acentric reflections are 0.5, 0.333 respectively for untwinned datasets, and 0.375, 0.2 for perfectly twinned datasets.



## 5 Model quality [i](#)

### 5.1 Standard geometry [i](#)

Bond lengths and bond angles in the following residue types are not validated in this section: NAD, UD2, CL

The Z score for a bond length (or angle) is the number of standard deviations the observed value is removed from the expected value. A bond length (or angle) with  $|Z| > 5$  is considered an outlier worth inspection. RMSZ is the root-mean-square of all Z scores of the bond lengths (or angles).

Mol	Chain	Bond lengths		Bond angles	
		RMSZ	$\# Z  > 5$	RMSZ	$\# Z  > 5$
1	A	0.38	0/2695	0.55	0/3666
1	B	0.38	0/2732	0.54	0/3716
1	C	0.37	0/2724	0.54	0/3704
1	D	0.39	0/2692	0.55	0/3661
All	All	0.38	0/10843	0.55	0/14747

There are no bond length outliers.

There are no bond angle outliers.

There are no chirality outliers.

There are no planarity outliers.

### 5.2 Too-close contacts [i](#)

In the following table, the Non-H and H(model) columns list the number of non-hydrogen atoms and hydrogen atoms in the chain respectively. The H(added) column lists the number of hydrogen atoms added and optimized by MolProbity. The Clashes column lists the number of clashes within the asymmetric unit, whereas Symm-Clashes lists symmetry-related clashes.

Mol	Chain	Non-H	H(model)	H(added)	Clashes	Symm-Clashes
1	A	2627	0	2543	16	0
1	B	2653	0	2583	15	0
1	C	2642	0	2580	6	0
1	D	2622	0	2552	13	0
2	A	1	0	0	0	0
2	B	2	0	0	0	0
2	D	1	0	0	0	0
3	A	44	0	26	0	0
3	B	44	0	26	0	0

*Continued on next page...*

*Continued from previous page...*

Mol	Chain	Non-H	H(model)	H(added)	Clashes	Symm-Clashes
3	C	44	0	26	0	0
3	D	44	0	26	0	0
4	A	39	0	25	5	0
4	B	39	0	25	0	0
4	C	39	0	25	2	0
4	D	39	0	25	0	0
5	A	267	0	0	2	0
5	B	269	0	0	1	0
5	C	251	0	0	1	0
5	D	258	0	0	1	0
All	All	11925	0	10462	50	0

The all-atom clashscore is defined as the number of clashes found per 1000 atoms (including hydrogen atoms). The all-atom clashscore for this structure is 2.

The worst 5 of 50 close contacts within the same asymmetric unit are listed below, sorted by their clash magnitude.

Atom-1	Atom-2	Interatomic distance (Å)	Clash overlap (Å)
1:A:152:LEU:HD12	1:B:73[B]:THR:HG22	1.64	0.79
4:C:402:UD2:H8'1	5:C:701:HOH:O	1.90	0.71
1:D:278:LEU:HD22	1:D:333:MET:HE1	1.81	0.62
1:B:218[A]:MET:HE2	1:B:275:PHE:CE1	2.36	0.60
1:A:194:PHE:HB2	1:A:264:ALA:HB2	1.87	0.57

There are no symmetry-related clashes.

## 5.3 Torsion angles [i](#)

### 5.3.1 Protein backbone [i](#)

In the following table, the Percentiles column shows the percent Ramachandran outliers of the chain as a percentile score with respect to all X-ray entries followed by that with respect to entries of similar resolution.

The Analysed column shows the number of residues for which the backbone conformation was analysed, and the total number of residues.

Mol	Chain	Analysed	Favoured	Allowed	Outliers	Percentiles
1	A	341/348 (98%)	331 (97%)	9 (3%)	1 (0%)	37 23
1	B	346/348 (99%)	338 (98%)	7 (2%)	1 (0%)	37 23

*Continued on next page...*

*Continued from previous page...*

Mol	Chain	Analysed	Favoured	Allowed	Outliers	Percentiles	
1	C	345/348 (99%)	339 (98%)	5 (1%)	1 (0%)	37	23
1	D	341/348 (98%)	332 (97%)	7 (2%)	2 (1%)	22	10
All	All	1373/1392 (99%)	1340 (98%)	28 (2%)	5 (0%)	30	17

All (5) Ramachandran outliers are listed below:

Mol	Chain	Res	Type
1	C	103	SER
1	D	300	ALA
1	A	103	SER
1	B	103	SER
1	D	103	SER

### 5.3.2 Protein sidechains ⓘ

In the following table, the Percentiles column shows the percent sidechain outliers of the chain as a percentile score with respect to all X-ray entries followed by that with respect to entries of similar resolution.

The Analysed column shows the number of residues for which the sidechain conformation was analysed, and the total number of residues.

Mol	Chain	Analysed	Rotameric	Outliers	Percentiles	
1	A	266/274 (97%)	264 (99%)	2 (1%)	79	71
1	B	271/274 (99%)	270 (100%)	1 (0%)	89	85
1	C	267/274 (97%)	266 (100%)	1 (0%)	89	85
1	D	264/274 (96%)	262 (99%)	2 (1%)	79	71
All	All	1068/1096 (97%)	1062 (99%)	6 (1%)	84	78

5 of 6 residues with a non-rotameric sidechain are listed below:

Mol	Chain	Res	Type
1	C	306	SER
1	D	157	GLU
1	D	304	ARG
1	A	302	ASP
1	A	291	LYS

Sometimes sidechains can be flipped to improve hydrogen bonding and reduce clashes. 5 of 7 such sidechains are listed below:

Mol	Chain	Res	Type
1	C	231	GLN
1	D	115	ASN
1	D	285	GLN
1	D	173	ASN
1	C	115	ASN

### 5.3.3 RNA [i](#)

There are no RNA molecules in this entry.

### 5.4 Non-standard residues in protein, DNA, RNA chains [i](#)

There are no non-standard protein/DNA/RNA residues in this entry.

### 5.5 Carbohydrates [i](#)

There are no oligosaccharides in this entry.

### 5.6 Ligand geometry [i](#)

Of 12 ligands modelled in this entry, 4 are monoatomic - leaving 8 for Mogul analysis.

In the following table, the Counts columns list the number of bonds (or angles) for which Mogul statistics could be retrieved, the number of bonds (or angles) that are observed in the model and the number of bonds (or angles) that are defined in the Chemical Component Dictionary. The Link column lists molecule types, if any, to which the group is linked. The Z score for a bond length (or angle) is the number of standard deviations the observed value is removed from the expected value. A bond length (or angle) with  $|Z| > 2$  is considered an outlier worth inspection. RMSZ is the root-mean-square of all Z scores of the bond lengths (or angles).

Mol	Type	Chain	Res	Link	Bond lengths			Bond angles		
					Counts	RMSZ	$\# Z  > 2$	Counts	RMSZ	$\# Z  > 2$
4	UD2	B	404	-	40,41,41	1.11	2 (5%)	59,62,62	1.44	8 (13%)
3	NAD	A	402	-	42,48,48	1.11	4 (9%)	50,73,73	1.45	9 (18%)
3	NAD	B	403	-	42,48,48	1.02	5 (11%)	50,73,73	1.27	6 (12%)
3	NAD	D	402	-	42,48,48	0.95	2 (4%)	50,73,73	1.29	8 (16%)
4	UD2	D	403	-	40,41,41	0.52	0	59,62,62	0.88	3 (5%)
4	UD2	A	403	-	40,41,41	1.07	2 (5%)	59,62,62	1.65	10 (16%)
4	UD2	C	402	-	40,41,41	1.17	2 (5%)	59,62,62	1.31	7 (11%)
3	NAD	C	401	-	42,48,48	0.95	2 (4%)	50,73,73	1.40	9 (18%)

In the following table, the Chirals column lists the number of chiral outliers, the number of chiral centers analysed, the number of these observed in the model and the number defined in the Chemical Component Dictionary. Similar counts are reported in the Torsion and Rings columns. '-' means no outliers of that kind were identified.

Mol	Type	Chain	Res	Link	Chirals	Torsions	Rings
4	UD2	B	404	-	-	9/26/63/63	0/3/3/3
3	NAD	A	402	-	-	5/26/62/62	0/5/5/5
3	NAD	B	403	-	-	5/26/62/62	0/5/5/5
3	NAD	D	402	-	-	5/26/62/62	0/5/5/5
4	UD2	D	403	-	-	8/26/63/63	0/3/3/3
4	UD2	A	403	-	-	4/26/63/63	0/3/3/3
4	UD2	C	402	-	-	8/26/63/63	0/3/3/3
3	NAD	C	401	-	-	5/26/62/62	0/5/5/5

The worst 5 of 19 bond length outliers are listed below:

Mol	Chain	Res	Type	Atoms	Z	Observed(Å)	Ideal(Å)
4	C	402	UD2	PB-O3A	4.38	1.64	1.59
4	C	402	UD2	PA-O3A	3.86	1.63	1.59
4	B	404	UD2	PB-O3A	3.66	1.63	1.59
4	A	403	UD2	PA-O3A	3.53	1.63	1.59
4	A	403	UD2	PB-O3A	3.47	1.63	1.59

The worst 5 of 60 bond angle outliers are listed below:

Mol	Chain	Res	Type	Atoms	Z	Observed(°)	Ideal(°)
4	B	404	UD2	O5'-C1'-O1'	-5.46	104.23	111.36
4	A	403	UD2	C8'-C7'-N2'	-5.24	107.42	116.12
4	A	403	UD2	C1'-C2'-N2'	-5.07	102.41	110.92
4	A	403	UD2	O5'-C1'-O1'	-4.54	105.43	111.36
3	A	402	NAD	C3N-C7N-N7N	-4.40	112.32	117.74

There are no chirality outliers.

5 of 49 torsion outliers are listed below:

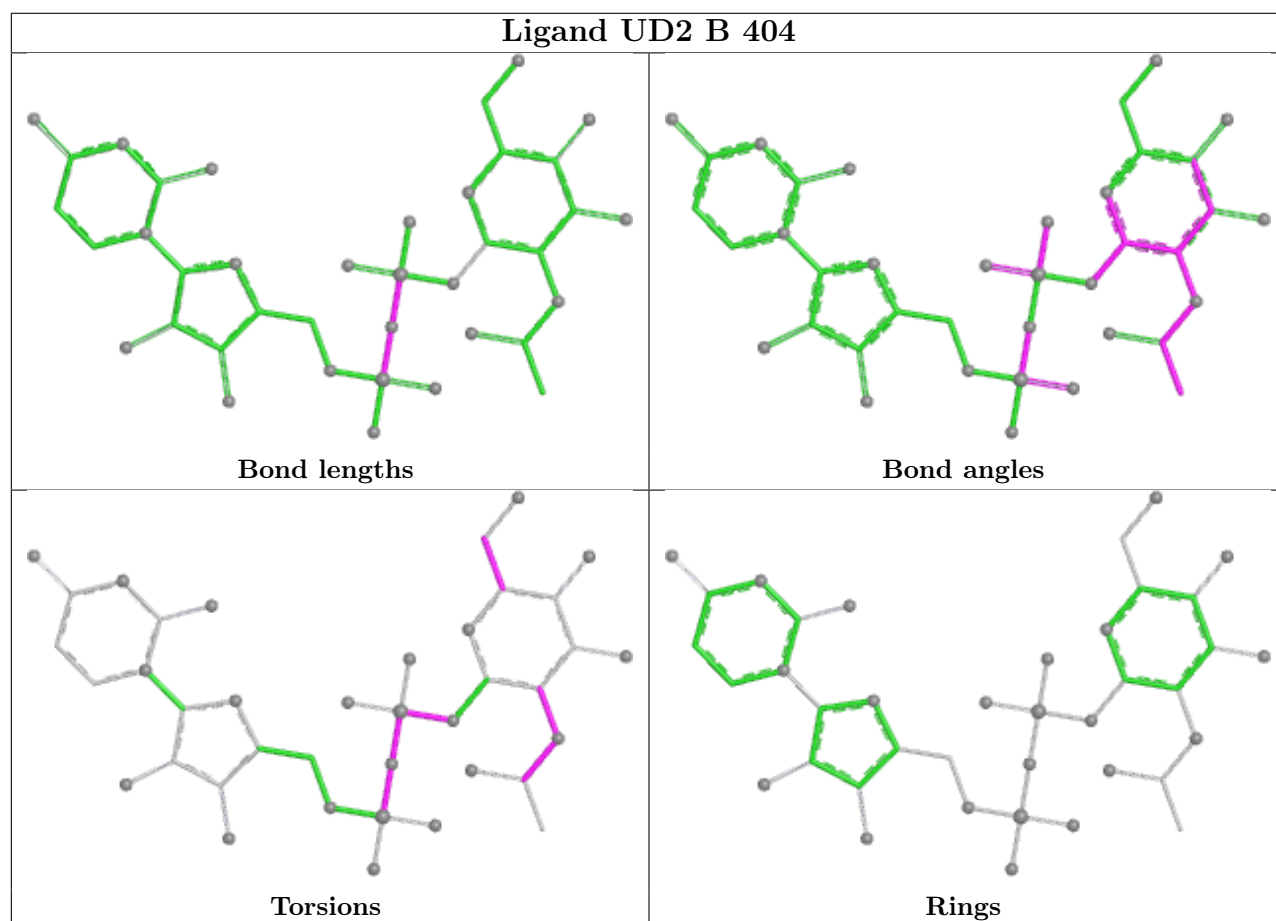
Mol	Chain	Res	Type	Atoms
3	A	402	NAD	C5D-O5D-PN-O3
3	A	402	NAD	C5D-O5D-PN-O1N
3	A	402	NAD	C5D-O5D-PN-O2N
3	B	403	NAD	C5D-O5D-PN-O3
3	B	403	NAD	C5D-O5D-PN-O1N

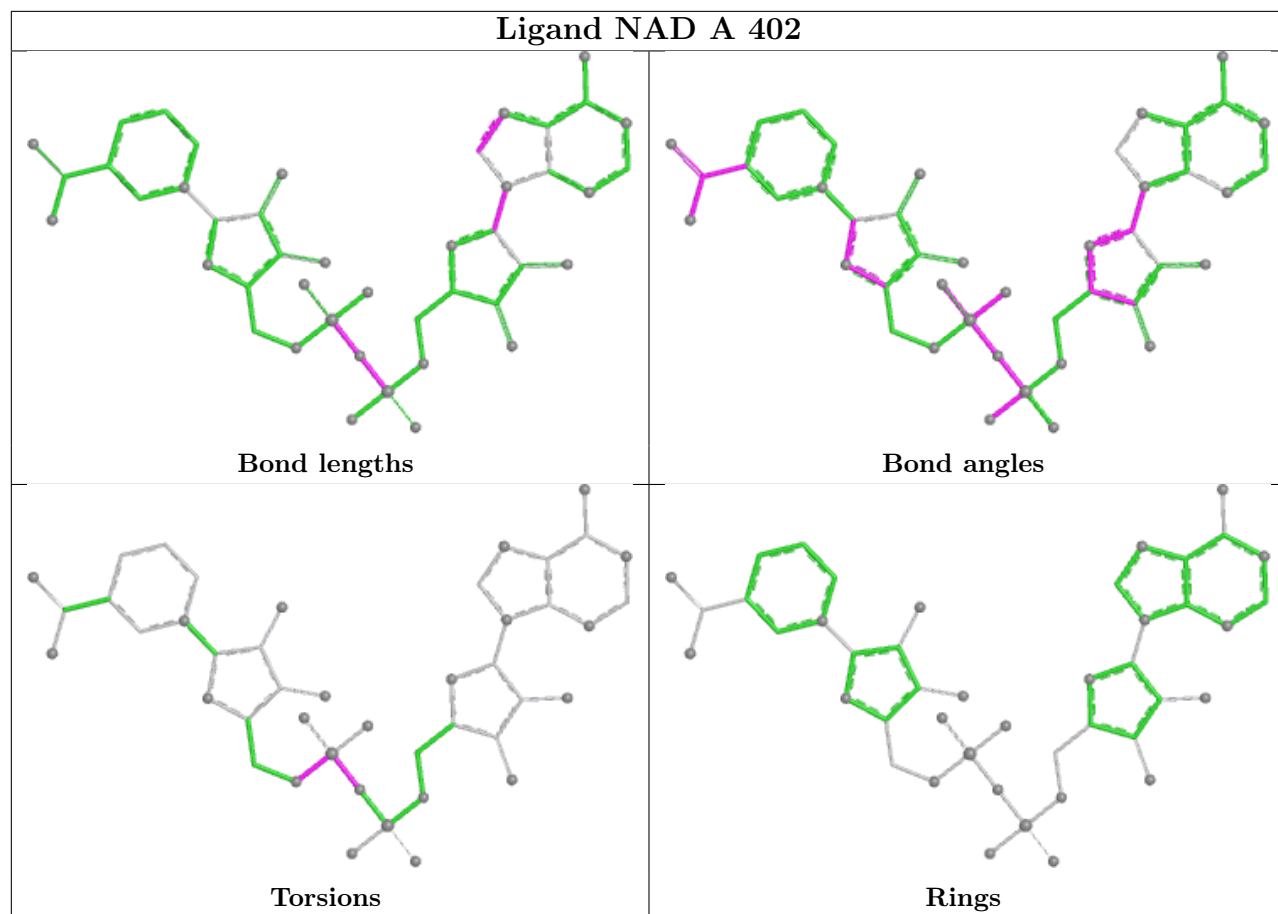
There are no ring outliers.

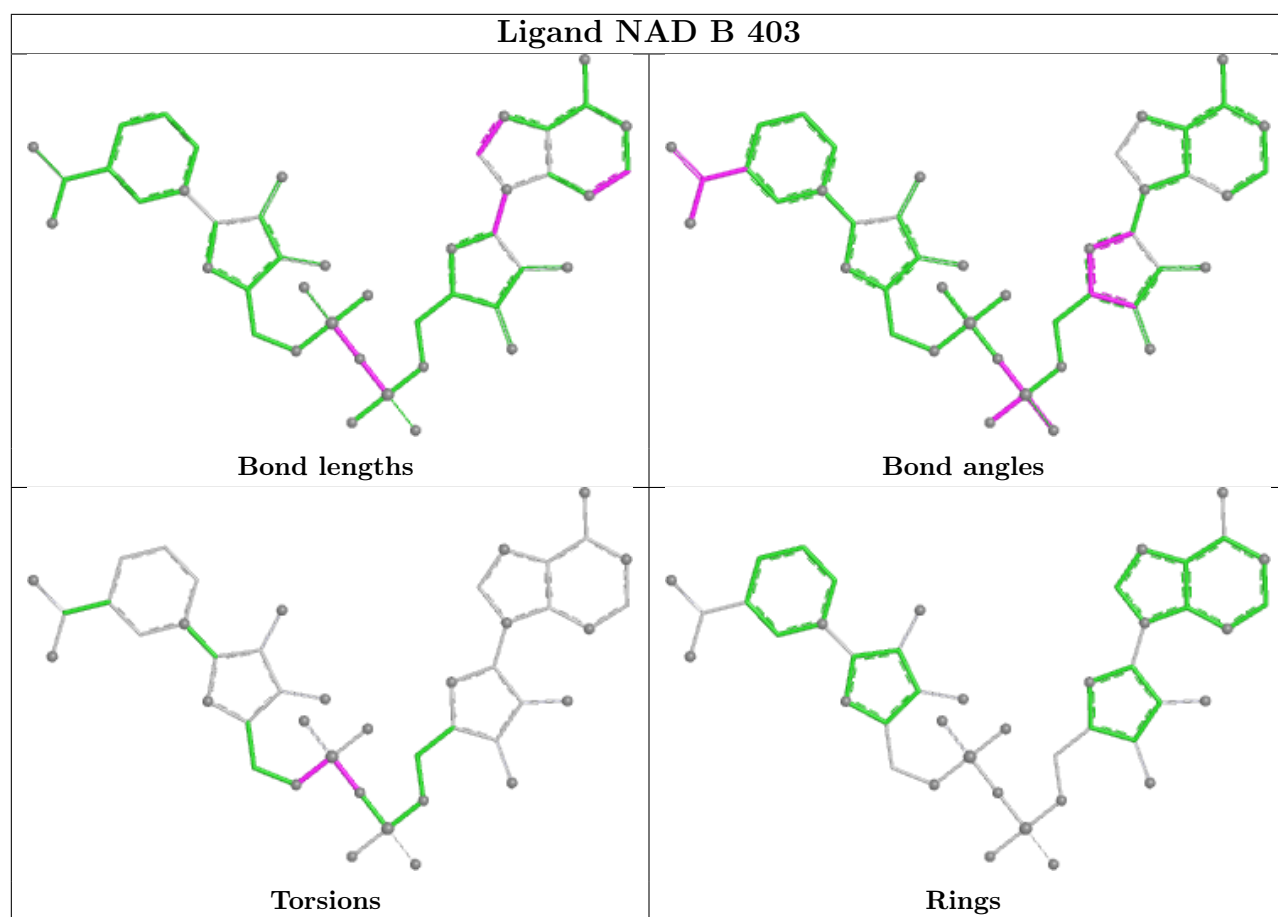
2 monomers are involved in 7 short contacts:

Mol	Chain	Res	Type	Clashes	Symm-Clashes
4	A	403	UD2	5	0
4	C	402	UD2	2	0

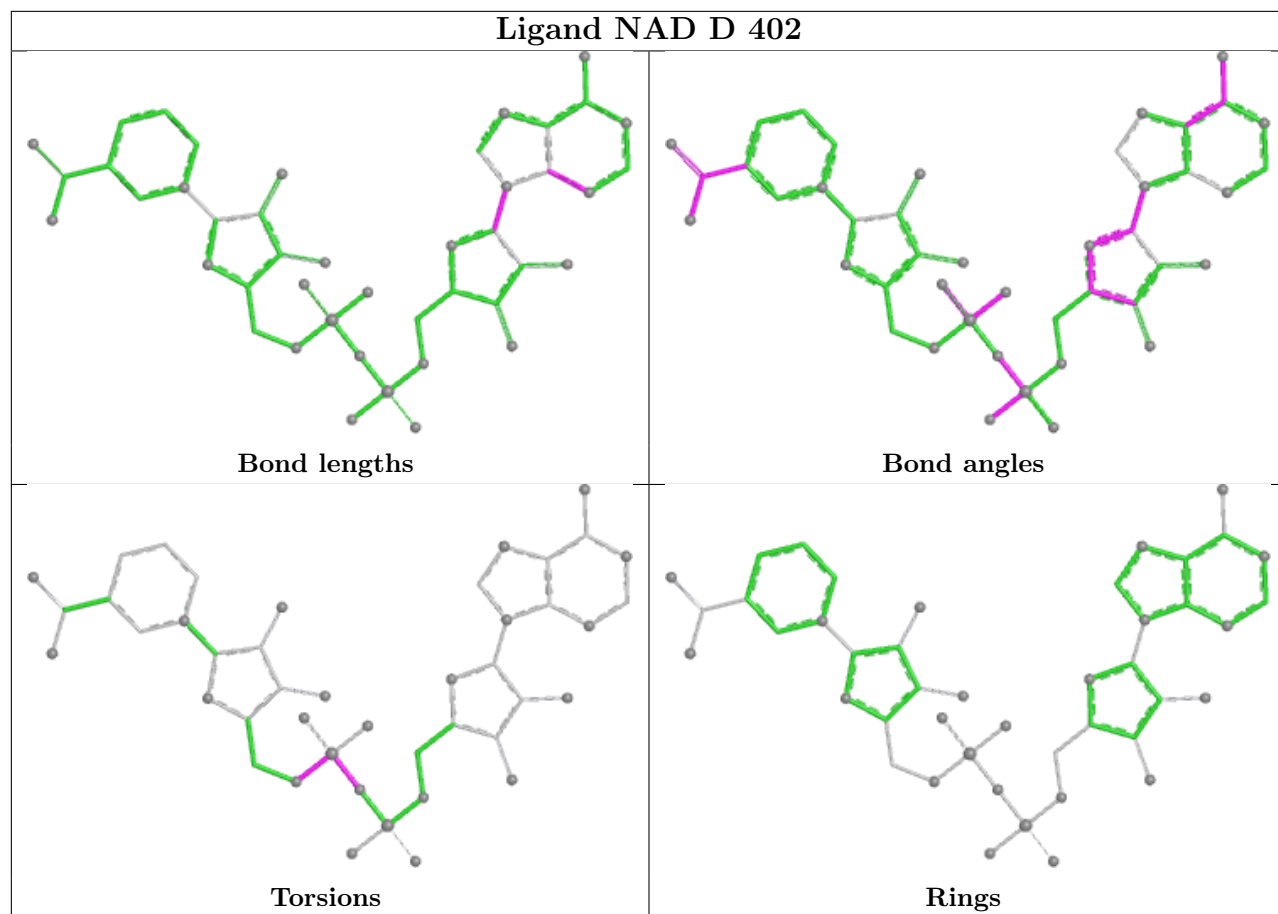
The following is a two-dimensional graphical depiction of Mogul quality analysis of bond lengths, bond angles, torsion angles, and ring geometry for all instances of the Ligand of Interest. In addition, ligands with molecular weight > 250 and outliers as shown on the validation Tables will also be included. For torsion angles, if less than 5% of the Mogul distribution of torsion angles is within 10 degrees of the torsion angle in question, then that torsion angle is considered an outlier. Any bond that is central to one or more torsion angles identified as an outlier by Mogul will be highlighted in the graph. For rings, the root-mean-square deviation (RMSD) between the ring in question and similar rings identified by Mogul is calculated over all ring torsion angles. If the average RMSD is greater than 60 degrees and the minimal RMSD between the ring in question and any Mogul-identified rings is also greater than 60 degrees, then that ring is considered an outlier. The outliers are highlighted in purple. The color gray indicates Mogul did not find sufficient equivalents in the CSD to analyse the geometry.

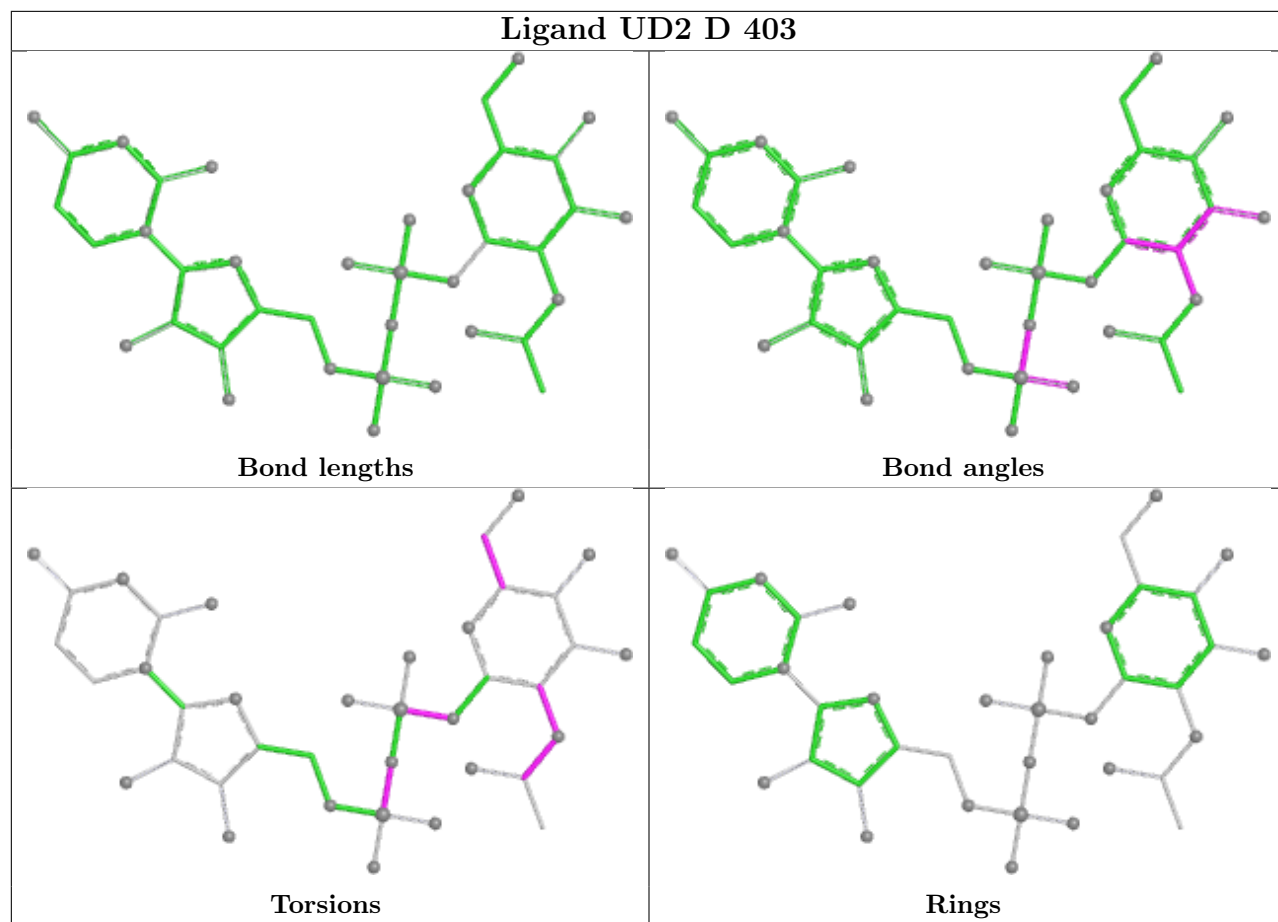


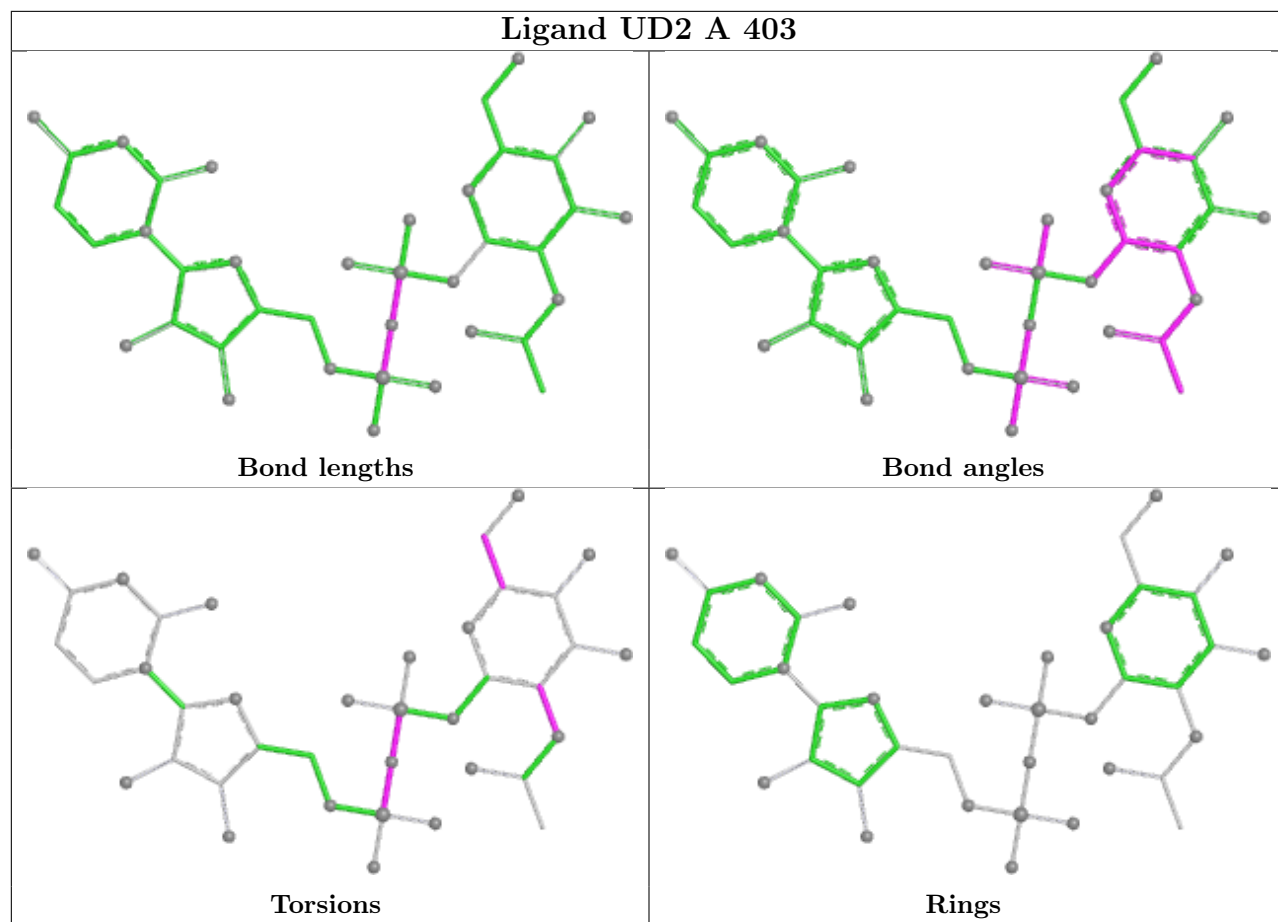


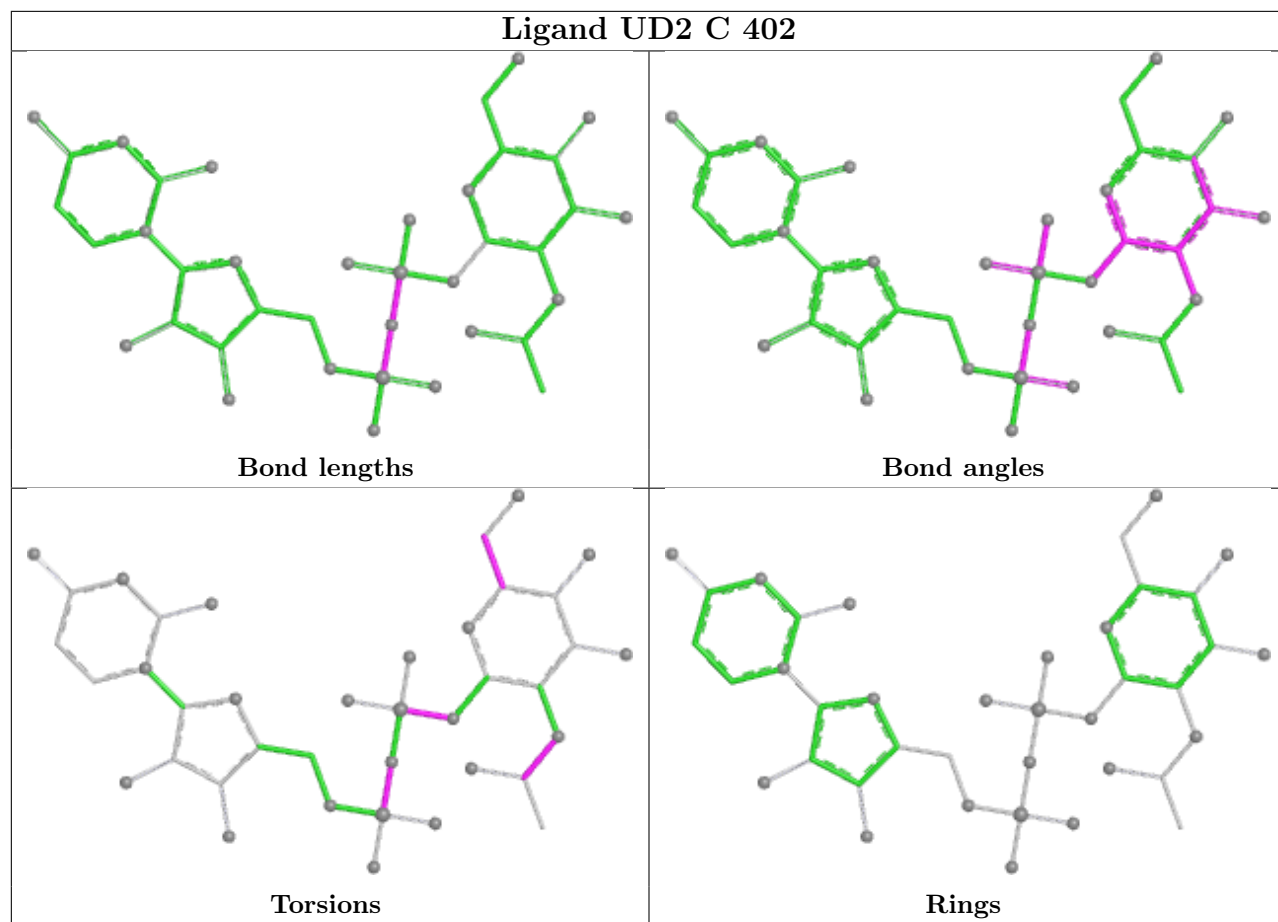


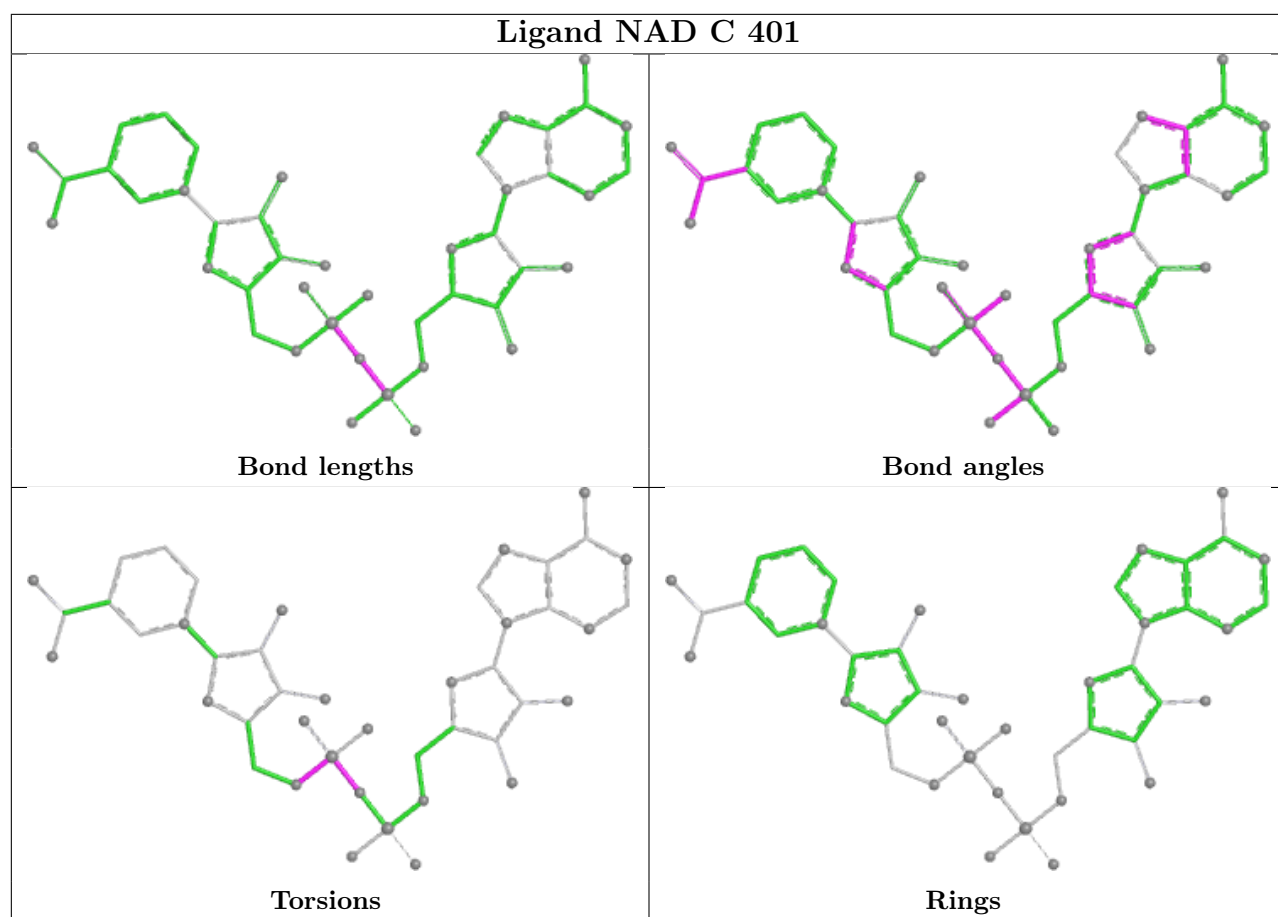












## 5.7 Other polymers [i](#)

There are no such residues in this entry.

## 5.8 Polymer linkage issues [i](#)

There are no chain breaks in this entry.

## 6 Fit of model and data [i](#)

### 6.1 Protein, DNA and RNA chains [i](#)

In the following table, the column labelled ‘#RSRZ> 2’ contains the number (and percentage) of RSRZ outliers, followed by percent RSRZ outliers for the chain as percentile scores relative to all X-ray entries and entries of similar resolution. The OWAB column contains the minimum, median, 95<sup>th</sup> percentile and maximum values of the occupancy-weighted average B-factor per residue. The column labelled ‘Q< 0.9’ lists the number of (and percentage) of residues with an average occupancy less than 0.9.

Mol	Chain	Analysed	<RSRZ>	#RSRZ>2	OWAB(Å <sup>2</sup> )	Q<0.9
1	A	339/348 (97%)	-0.16	5 (1%) 71 74	11, 25, 46, 75	4 (1%)
1	B	340/348 (97%)	-0.18	3 (0%) 81 83	15, 25, 43, 61	8 (2%)
1	C	339/348 (97%)	-0.17	2 (0%) 85 88	14, 27, 43, 64	8 (2%)
1	D	339/348 (97%)	-0.14	3 (0%) 81 83	14, 26, 48, 81	4 (1%)
All	All	1357/1392 (97%)	-0.16	13 (0%) 79 81	11, 26, 44, 81	24 (1%)

The worst 5 of 13 RSRZ outliers are listed below:

Mol	Chain	Res	Type	RSRZ
1	D	303	VAL	4.9
1	D	300	ALA	4.1
1	A	301	GLY	3.5
1	B	2	THR	3.0
1	B	301	GLY	2.8

### 6.2 Non-standard residues in protein, DNA, RNA chains [i](#)

There are no non-standard protein/DNA/RNA residues in this entry.

### 6.3 Carbohydrates [i](#)

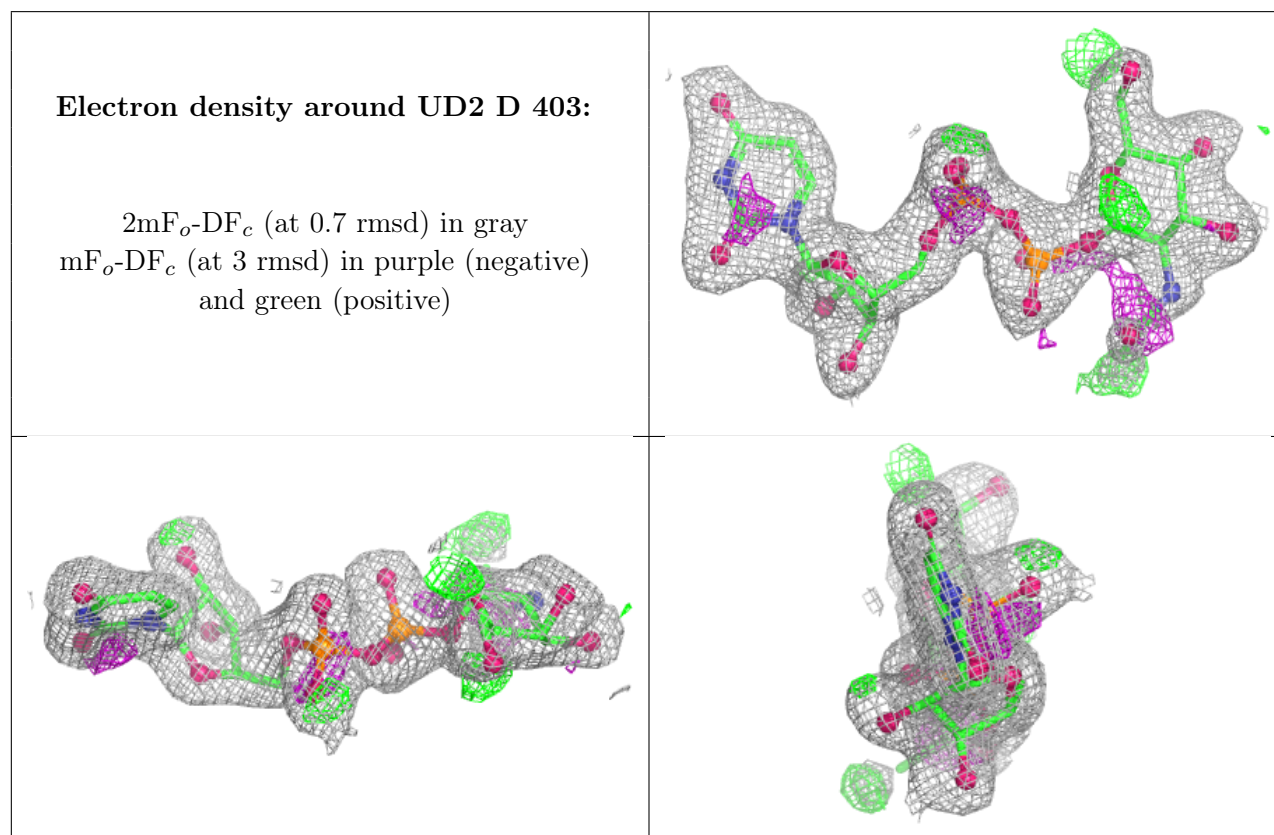
There are no oligosaccharides in this entry.

### 6.4 Ligands [i](#)

In the following table, the Atoms column lists the number of modelled atoms in the group and the number defined in the chemical component dictionary. The B-factors column lists the minimum, median, 95<sup>th</sup> percentile and maximum values of B factors of atoms in the group. The column labelled ‘Q< 0.9’ lists the number of atoms with occupancy less than 0.9.

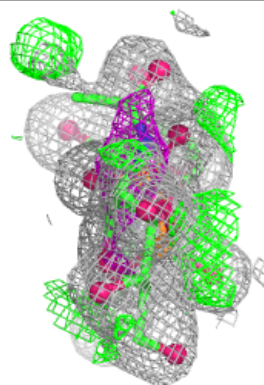
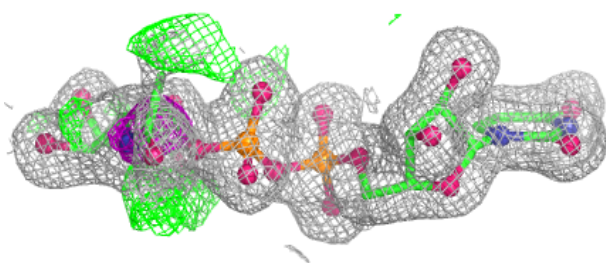
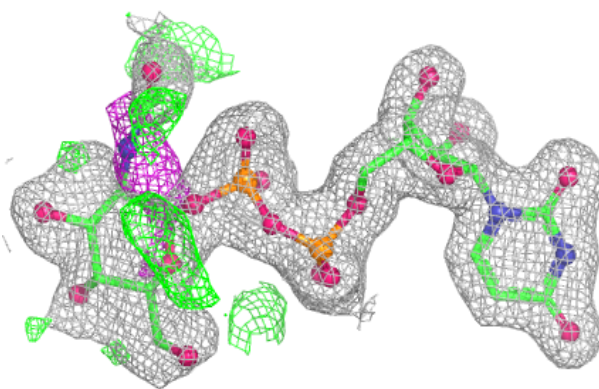
Mol	Type	Chain	Res	Atoms	RSCC	RSR	B-factors( $\text{\AA}^2$ )	Q<0.9
4	UD2	D	403	39/39	0.92	0.10	24,36,53,56	0
2	CL	B	402	1/1	0.93	0.18	47,47,47,47	0
4	UD2	B	404	39/39	0.95	0.09	22,29,58,62	0
4	UD2	C	402	39/39	0.95	0.09	21,27,54,58	0
4	UD2	A	403	39/39	0.95	0.09	23,33,51,60	0
2	CL	D	401	1/1	0.96	0.13	43,43,43,43	0
2	CL	A	401	1/1	0.97	0.07	33,33,33,33	0
2	CL	B	401	1/1	0.97	0.07	32,32,32,32	0
3	NAD	A	402	44/44	0.98	0.04	15,17,21,24	0
3	NAD	B	403	44/44	0.98	0.04	15,18,22,25	0
3	NAD	C	401	44/44	0.98	0.05	17,20,22,27	0
3	NAD	D	402	44/44	0.98	0.04	16,19,24,27	0

The following is a graphical depiction of the model fit to experimental electron density of all instances of the Ligand of Interest. In addition, ligands with molecular weight > 250 and outliers as shown on the geometry validation Tables will also be included. Each fit is shown from different orientation to approximate a three-dimensional view.

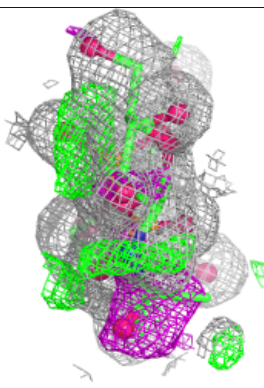
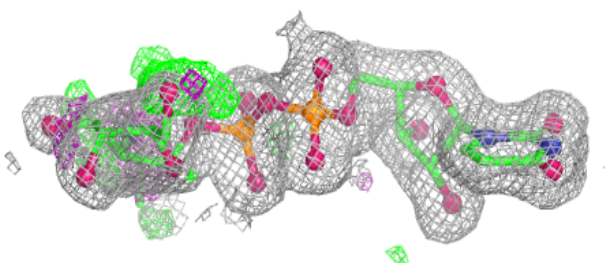
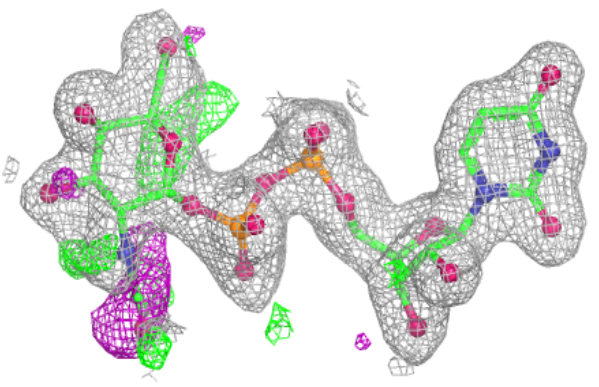


**Electron density around UD2 B 404:**

$2mF_o-DF_c$  (at 0.7 rmsd) in gray  
 $mF_o-DF_c$  (at 3 rmsd) in purple (negative)  
and green (positive)

**Electron density around UD2 C 402:**

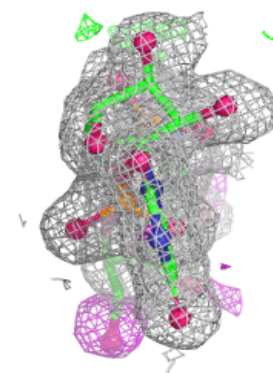
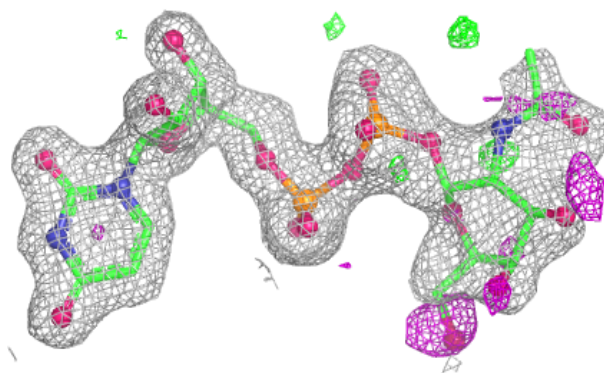
$2mF_o-DF_c$  (at 0.7 rmsd) in gray  
 $mF_o-DF_c$  (at 3 rmsd) in purple (negative)  
and green (positive)



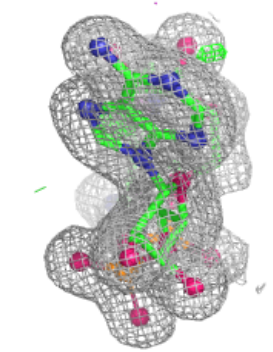
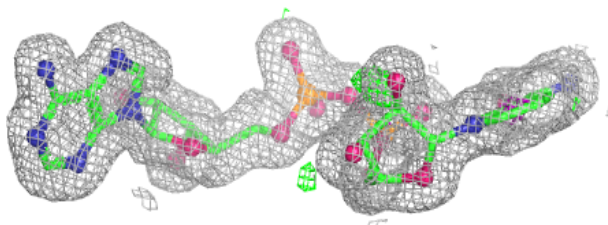
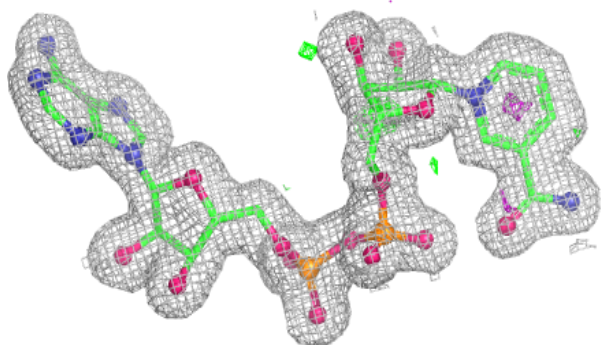


**Electron density around UD2 A 403:**

$2mF_o-DF_c$  (at 0.7 rmsd) in gray  
 $mF_o-DF_c$  (at 3 rmsd) in purple (negative)  
and green (positive)

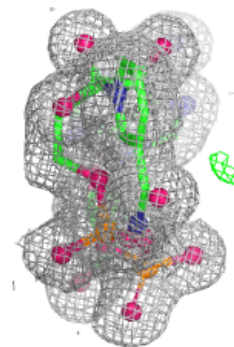
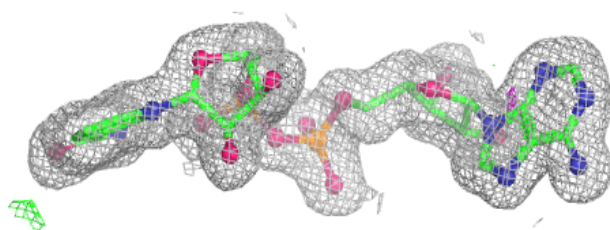
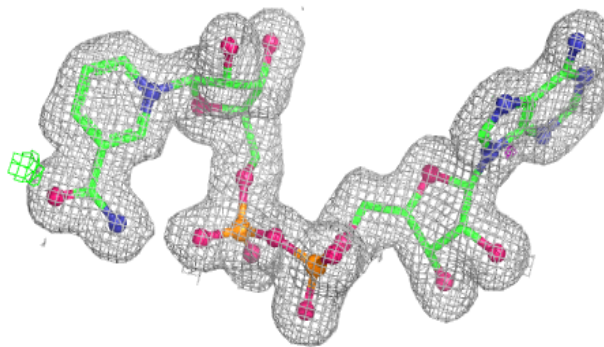
**Electron density around NAD A 402:**

$2mF_o-DF_c$  (at 0.7 rmsd) in gray  
 $mF_o-DF_c$  (at 3 rmsd) in purple (negative)  
and green (positive)

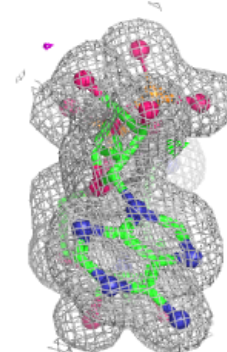
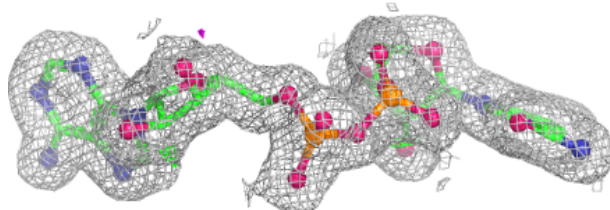
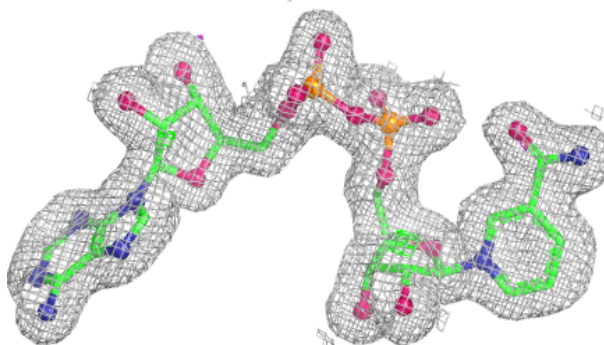


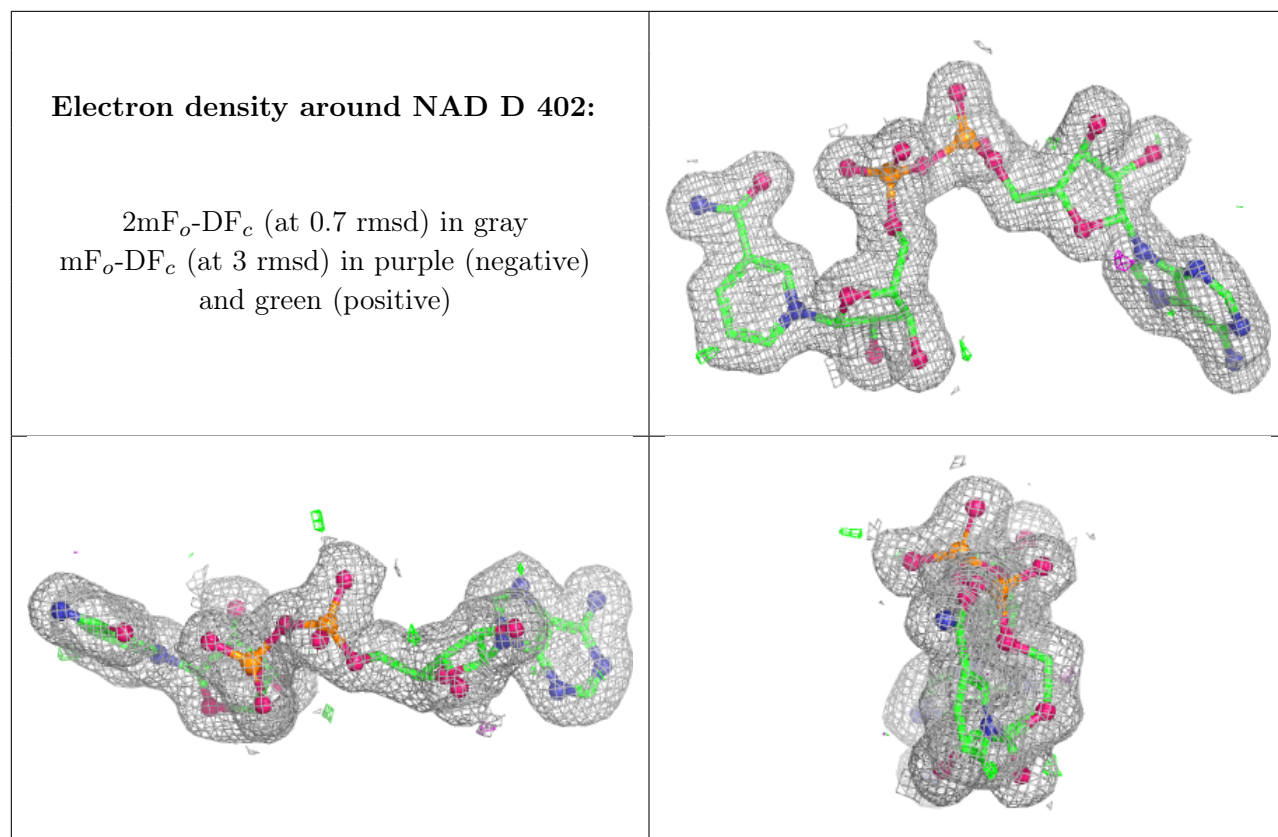
**Electron density around NAD B 403:**

$2mF_o-DF_c$  (at 0.7 rmsd) in gray  
 $mF_o-DF_c$  (at 3 rmsd) in purple (negative)  
and green (positive)

**Electron density around NAD C 401:**

$2mF_o-DF_c$  (at 0.7 rmsd) in gray  
 $mF_o-DF_c$  (at 3 rmsd) in purple (negative)  
and green (positive)





## 6.5 Other polymers [i](#)

There are no such residues in this entry.